

IN

NEW YORK

DECEMBER 2016

ENTERTAINMENT
SHOPPING
DINING
MUSEUMS
GALLERIES
MAPS

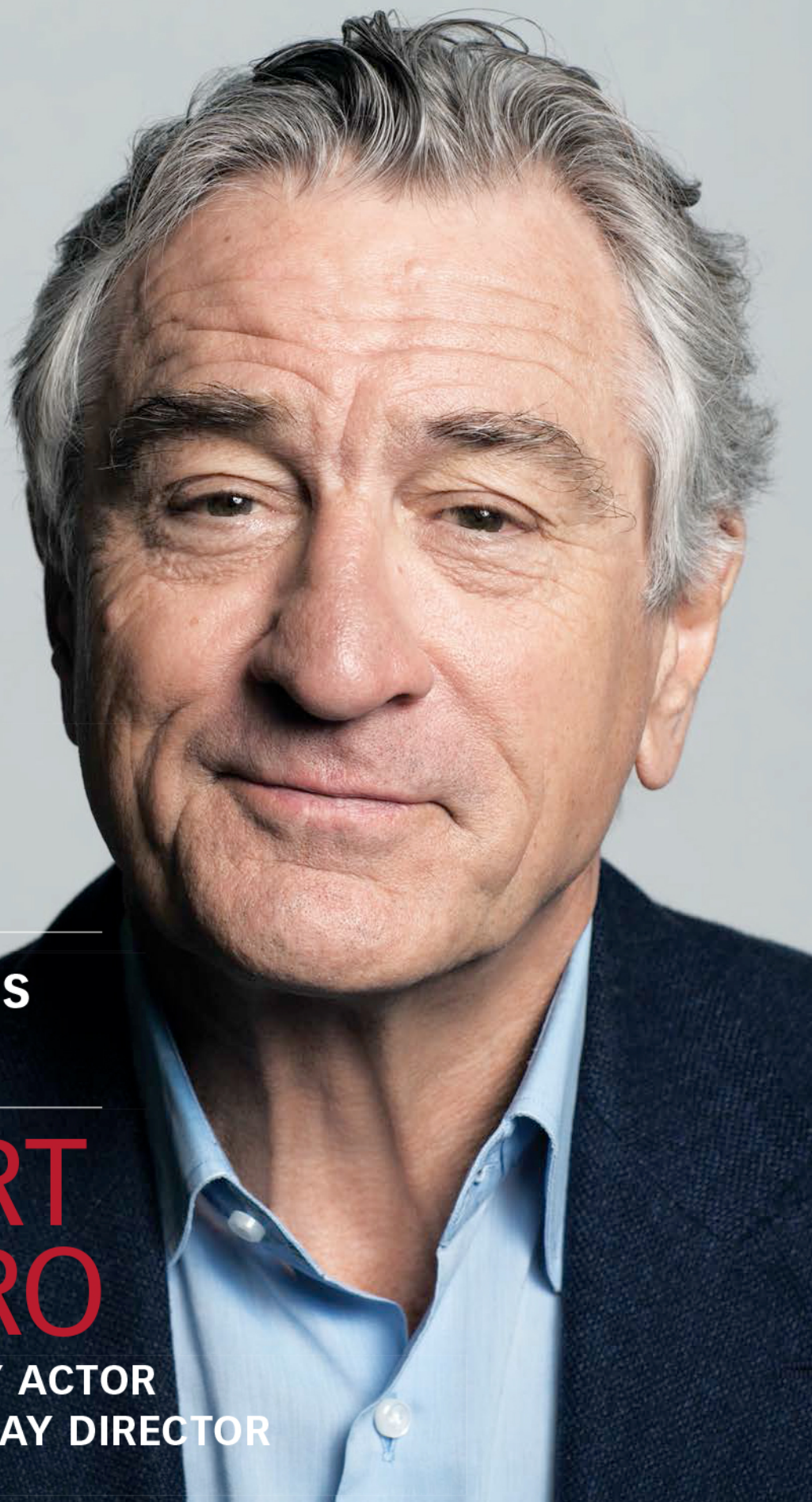
INNEWYORK.COM

**Holiday Gifts
for Guys
and Dolls**

**Editors' Faves
of the Year**

**ROBERT
DE NIRO**

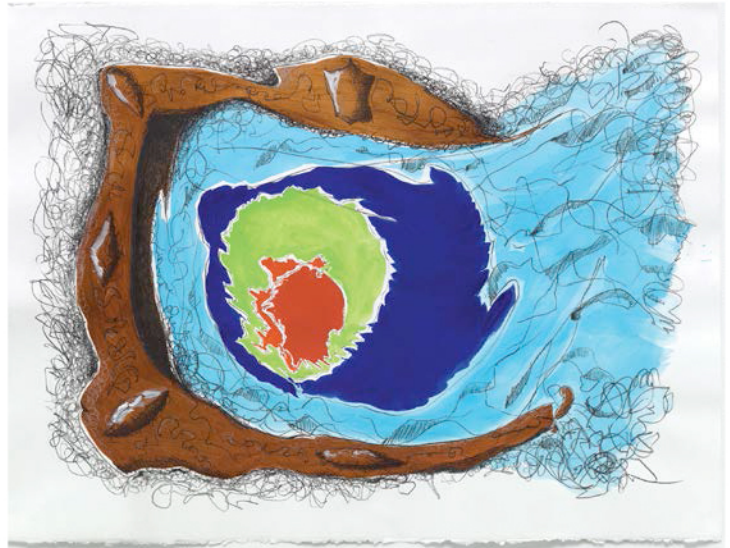
**THE LEGENDARY ACTOR
TURNS BROADWAY DIRECTOR**



The letters/numbers at the end of each listing are NYC Map coordinates (pp. 76-78).



2



3



1



5

1 Mark Morrisroe's works from 1982–85 are displayed thru Dec. 22 at this TriBeCa gallery. | **Alexander and Bonin, p. 71** **2** Two artists—one French, one American—are on exhibit in "Voyeur vs. Viewer," thru Dec. 11. | **Lyles & King, p. 72** **3** On view thru Dec. 16 are the apparently "Endlessly Expanding" works of John F. Simon Jr. | **Sandra Gering Inc., p. 72** **4** A show by the artistic team of Elmgreen & Dragset explores "Changing Subjects," thru Dec. 17. | **The FLAG Art Foundation, p. 72** **5** This veteran Midtown gallery is offering a retrospective of the paintings of Adam Straus, thru Dec. 24. | **Nohra Haime Gallery, p. 72**

ANTIQUES STORES+CENTERS

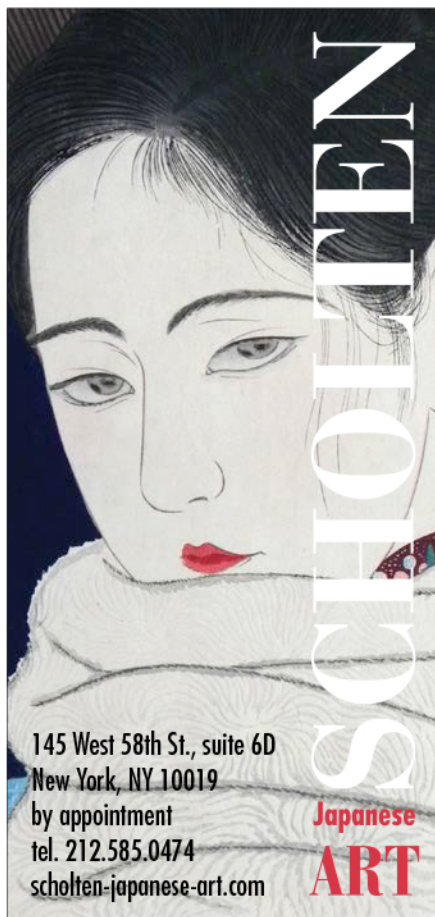
Flying Cranes Antiques Ltd. *The Manhattan Art & Antiques Center, 1050 Second Ave., Galleries 55 & 58, at E. 55th St., 212.223.4600. flyingcranesantiques.com.* Fine Japanese art from the Meiji period. M-F 10:30 am-6 pm. **E13**

Gramercy Vintage Furniture *61 Gramercy Park No., btw E. 21st & E. 22nd sts., btw Lexington Ave. & Park Ave. So., 212.477.7156. gramercyvintagefurniture.com.* Home furnishings from the 19th to mid-20th centuries. M-F 10 am-6 pm, Sa 10 am-4 pm, Su 1-6 pm. **F16**

Hemingway African Gallery *The Manhattan Art & Antiques Center, 1050 Second Ave., Gallery 96, at E. 55th St., 212.838.3650. hemingwayafricangallery.com.* Fine sculpture, artifacts, skins and jewelry are on display at this wholesale importer of African art. M-Sa 10:30 am-6 pm. **E13**

Linda Horn Antiques *1327 Madison Ave., btw E. 93rd & E. 94th sts., 212.772.1122. lindahorn.com.* At this fine uptown boutique, 19th-century European treasures can include Moroccan inlaid bone trunks and brass birdcages. M-Sa 10 am-6 pm. **F8**

PHOTOS: MARK MORRISROE, "STILL LIFE WITH MARBLE FIGURES (IN THE HOME OF STEPHEN TASHIAN NYC)," JOERG LOHSE, CLAIRE TABOURET, "MAKEUP (BLUE EYEBROWS)," COURTESY OF LYLES & KING, NEW YORK; JOHN F. SIMON JR., "OVERFLOW," COURTESY THE ARTIST AND SANDRA GERING INC.; ELMGREEN AND DRAGSET, "THE EXPERIMENT," ADAM STRAUS, "SPOIL CAY, BAHAMAS," NOHRA HAIME GALLERY, 2016



SCHOLTEN

145 West 58th St., suite 6D
New York, NY 10019
by appointment
tel. 212.585.0474
scholten-japanese-art.com

Japanese ART

WIN A NYC SWEEPSTAKES

Enter at innewyork.com/sweepstakes



Follow Us



gallery.com. A spacious contemporary art gallery showcasing colorful and spiritually uplifting works. Artists on the roster include Daniel Gastaud, Dori Levinstein and David Kracov. Daily 9 am-9 pm. **F14**

The 8th Floor 17 W. 17th St., 8th fl., btw Fifth & Sixth aves., 646.839.5908. the8thfloor.org. An exhibition space devoted to art that promotes social change in NYC and beyond. Tu-F 11 am-6 pm. Sa by appointment. **F14**

11R 195 Chrystie St., btw Rivington & Stanton sts., 212.982.1930. 11rgallery.com. A Lower East Side gallery showcasing contemporary art from both established and emerging artists. Tu-F 11 am-6 pm, Sa by appointment. **E19**

Fergus McCaffrey 514 W. 26th St., btw 10th and 11th aves., 212.988.2200. fergusmccaffrey.com. A gallery primarily showcasing the work of Japanese artists. Tu-Sa 10 am-6 pm. **J16**

The FLAG Art Foundation 545 W. 25th St., 9th & 10th fls., btw 10th & 11th aves. 212.206.0220. flagartfoundation.org. Within the Chelsea Arts Tower, this nonprofit exhibition space showcases contemporary works from established and emerging international artists. W-Sa 11 am-5 pm. Free. **J16**

Foley Gallery 59 Orchard St., btw Hester & Grand sts., 212.244.9081. foleygallery.com. Contemporary photography and works on paper, featuring pieces by Jerry Dantzig, Edward Mapplethorpe and Sage Sohier. W-Sa 11 am-6 pm. **D20**

Gagosian Gallery 522 W. 21st St., btw 10th & 11th aves., 212.741.1717; and five other NYC locations. gagosian.com. The NYC outpost of a global gallery—owned by Larry Gagosian, considered by many to be an art world kingmaker. Tu-Sa 10 am-6 pm. **J17**

Galerie Lelong 528 W. 26th St., btw 10th & 11th aves., 212.315.0470. galerielelong.com. Represents contemporary artists from America, Europe and Latin America, such as Jaume Plensa, Cildo Meireles and Emilio Perez. Tu-Sa 10 am-6 pm. **J16**

Ierimonti Gallery 24 W. 57th St., Ste. 501, btw Fifth & Sixth aves., 212.581.1619. ierimontigallery.com. This gallery shows work by artists including Ed Ruscha. Tu-Sa 10 am-6 pm. **G13**

Jack Shainman Gallery 513 W. 20th St., btw 10th & 11th aves., 212.645.1701; and one other NYC location. jackshainman.com. Works by artists such as Nick Cave and Carrie Mae Weems focus on political and social issues. Tu-Sa 10 am-6 pm. **J17**

Luxembourg & Dayan 64 E. 77th St., btw Park & Madison aves., 212.452.4646. luxembourgdayan.com. In a four-story space, Daniella Luxembourg and Amalia Dayan showcase works by artists such as Marcel Duchamp and Andy Warhol. Tu-Sa 10 am-5 pm. **F10**

Lyles & King 106 Forsyth St., at Broome St., 646.484.5478. www.lylesandking.com. Mira Schor, Phillip Birch and Chris Hood are among the contemporary artists represented by this

young Lower East Side gallery, a subterranean space run by Isaac Lyles and his journalist wife, Alexandra King-Lyles. W-Su noon-6 pm. **D19**

Mitchell-Innes & Nash 534 W. 26th St., btw 10th & 11th aves., 212.744.7400; and one other NYC location. miandn.com. Impressionist, modern and contemporary work by artists such as Anthony Caro, Roy Lichtenstein and Jack Tworokov. Tu-Sa 10 am-6 pm. **J16**

Nohra Haime Gallery The Crown Building, 730 Fifth Ave., 7th fl., btw 56th & 57th sts., 212.888.3550. nohrahaimegallery.com. This gallery represents contemporary American, European and Latin American artists who work in a variety of mediums. M by appointment, Tu-Sa 10 am-6 pm. **F12**

Pierogi Gallery 155 Suffolk St., btw Stanton & Houston sts., 646.429.907. pierogi2000.com. A hip space showcases art in a variety of mediums. W-Su 11 am-6 pm. **C19**

Rosenberg & Co. 19 E. 66th St., btw Madison & Fifth aves., 212.202.3270. rosenbergco.com. The New York City branch of a family-owned European gallery showcases modern and contemporary art. Tu-Sa 10 am-6 pm. **E11**

Sandra Gering Inc. 14 E. 63rd St., 646.336.7183. sandrageringinc.com. Contemporary works, from Marc Ganzglass' installation pieces to Leo Villareal's light sculptures are this Upper East Side space's focus. Tu-F 10 am-6 pm, Sa 11 am-5 pm. **F12**

Scholten Japanese Art 145 W. 58th St., Ste. 6D, btw Sixth & Seventh aves., 212.585.0474. scholten-japanese-art.com. This gallery offers a collection of fine Japanese works and cultural objects with an emphasis on the Edo period. By appointment only. **G12**

Sean Kelly Gallery 475 10th Ave., at W. 36th St., 212.239.1181. skny.com. Diverse, unconventional and intellectually driven works from contemporary American and European artists. Tu-F 11 am-6 pm, Sa 10 am-6 pm. **J15**

AUCTION HOUSES

Christie's 20 Rockefeller Plz., btw Fifth & Sixth aves., 212.636.2000. christies.com. A prestigious auctioneer of fine art and antiques, founded in London in the 18th century. Call for viewing and sale hours. **G14**

Roland Auctions 80 E. 11th St., at Broadway, 212.260.2000. rolandsantiques.com. This family-owned auction house is full of gems for antiques hunters and art collectors alike. **F17**

Sotheby's 1334 York Ave., at E. 72nd St., 212.606.7000. sothebys.com. Fine art and collectibles are up for auction. Call for viewing and sale hours. **D11**

Swann Auction Galleries 104 E. 25th St., btw Lexington & Park aves., 212.254.4710. swanngaleries.com. A family-run auction house, specializing in rare and antiquarian books and works on paper, hosts monthly auctions. **F16**