



Level 7-SAMPLE ANSWER KEY

National Federation of Music Clubs – Festival Theory Test SAMPLE - LEVEL 7 - SAMPLE

Name: _____ Date: _____ ID: _____ Rating: _____

(Superior 90-100, Excellent 80-89.5, Satisfactory 70-79.5,
Fair 60-69.5, Needs Improvement <60)

1. Circle the lower-sounding note in each measure below.

-1 pt. each measure (4)

Musical notation for question 1: A grand staff with four measures. In each measure, two notes are shown. The lower note in each pair is circled.



-1 pt. each measure

2. Draw a whole note on the opposite staff that has the EXACT SAME PITCH as the given note. (4)

(4)

Musical notation for question 2: A grand staff with four measures. Each measure contains a whole note on one staff and a blank space on the other staff for the student to draw a whole note of the same pitch.

3. Draw a DIATONIC half step ABOVE the given note. Do not alter the given note.

(5)

-1 pt. each measure

Musical notation for question 3: A single staff with four measures. Each measure contains a whole note with a key signature change. The student is to draw a diatonic half step above the given note.

4. Draw a whole note on the next line or space that is a WHOLE STEP BELOW the given note. Do not alter the given note.

(5)

-1 pt. each measure

Musical notation for question 4: A single staff with four measures. Each measure contains a whole note with a key signature change. The student is to draw a whole note on the next line or space that is a whole step below the given note.

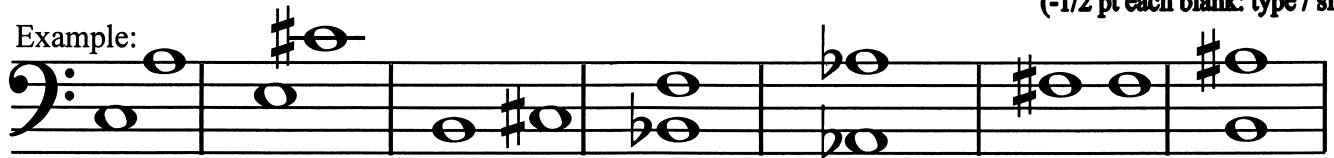
Level 7-SAMPLE ANSWER KEY

SAMPLE - Level 7 - Page 2

5. Name each interval below and indicate if it is major or perfect.

-1 pt. each measure (6)
(-1/2 pt each blank: type / size)

Example:



Maj 6th Maj 6th Maj 2nd Per 5th Per 8ve Per unison Maj 7th

6. On the staff below:

A. Draw bar lines.

-1 pt. each bar line(3)

B. Write counts under each note or rest as you would count them.

-1 pt. each measure(4)



1 e & 2 3 4 & 1&2 & a 3 & 4 & 1 e & a 234 1 2 3 4

Numbers/Syllables directly under each note & rest are required.

Students may write subdivision of the beat consistently across the line.

7. Add ONE NOTE to complete each measure below each arrow.

-1 pt. each measure(4)



8. One ONE REST to complete each measure below each arrow. Do not use a dotted half rest. ^{-1 pt. each measure(4)}



9. For each measure below:

A. Write the correct top number for each time signature.

-1 pt. each top number(4)

B. Write SIMPLE, COMPOUND or ASYMMETRICAL on the line below each measure to indicate the type of meter.

-2 pts. each blank(8)



simple compound simple asymmetrical

Level 7-SAMPLE ANSWER KEY

SAMPLE - Level 7 - Page 3

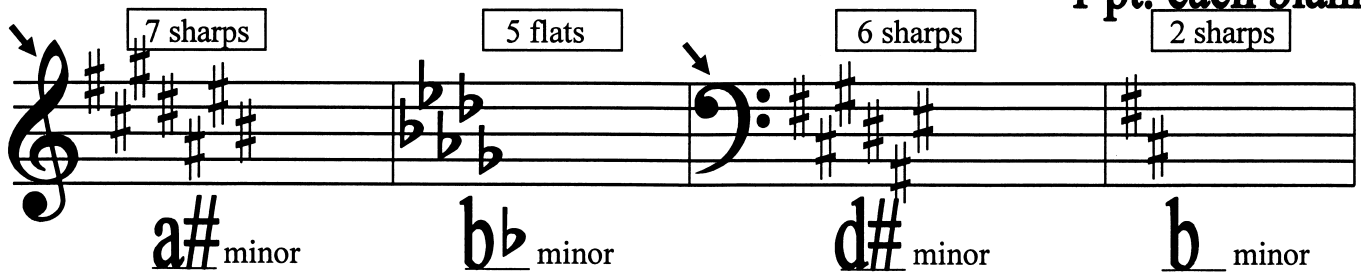
Name: _____ 

10. On the grand staff below, place sharps or flats before the notes, as needed in each clef, to make a major scale. (2)
-1 pt. each staff (treble / bass)



B Major

11. On the staff below:
 A. Draw a key signature with sharps or flats as named above each measure. (8)
 B. Name the minor key on the line below the measure. -1 pt. each blank (4)



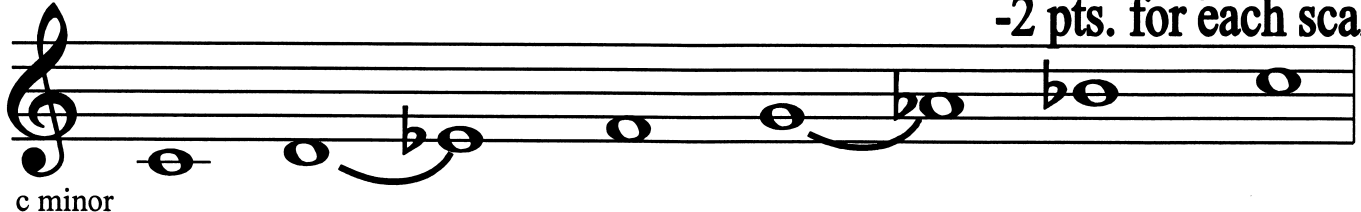
7 sharps
5 flats
6 sharps
2 sharps

a# minor b \flat minor d# minor b minor


12. Name the relative minor of each major key listed below. (6)
-1 pt. each blank

A Major / <u>f#</u> minor	C \flat Major / <u>a\flat</u> minor	G Major / <u>e</u> minor
E \flat Major / <u>C</u> minor	D \flat Major / <u>b\flat</u> minor	F# Major / <u>d#</u> minor

13. On the minor scale below:
 A. Mark the half steps with slurs where they would occur in a natural minor scale. (2)
 B. Draw sharps or flats before the notes as needed to make a natural minor scale in the given key. (4)



c minor



g# minor

-1/2 each half step
 -2 pts. for each scale



Level 7-SAMPLE ANSWER KEY

SAMPLE - Level 7 - Page 4

14. Name the following major keys below each measure.

-1 pt. each blank⁽⁶⁾



E Major G Major F# Major D \flat Major B \flat Major A \flat Major

15. Draw a major triad going UP from each given note. Do not alter the given note.

-1/2 pt. each triad⁽³⁾



16. For each measure below on the grand staff:

A. Draw the key signatures as indicated.

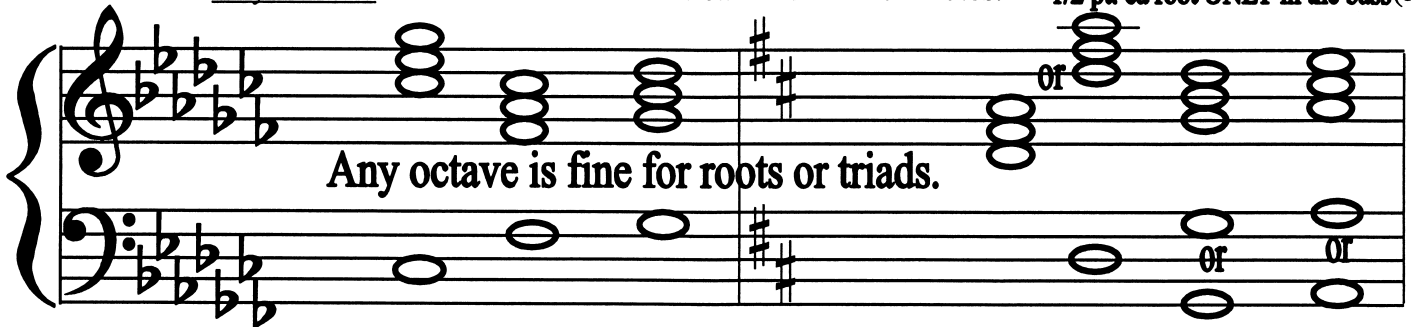
-1/2 pt. each key signature (treble/bass/treble/bass) (2)

B. Draw the I, IV and V triads in root position on the treble staff. Use whole notes.

-1 pt. each triad in treble (6)

C. Draw only the root of each triad on the bass staff. Use whole notes.

-1/2 pt. ea root ONLY in the bass⁽³⁾



\flat Major:

I

IV

V

D Major:

I

IV

V

-1/2 pt. each blank

17. Write the letter of the correct definition in the blank to the left of each musical term.

(3)

E *Allegretto*

A. a combination of two simple meters

D Simple meter

B. a fast walking *tempo*

B *Andantino*

C. a very slow *tempo*

F Compound meter

D. a meter where the beats are divided into two or four parts

C *Largo*

E. a *tempo* that means "a little fast"

A Asymmetrical meter

F. a meter where the beats are divided into three or six parts