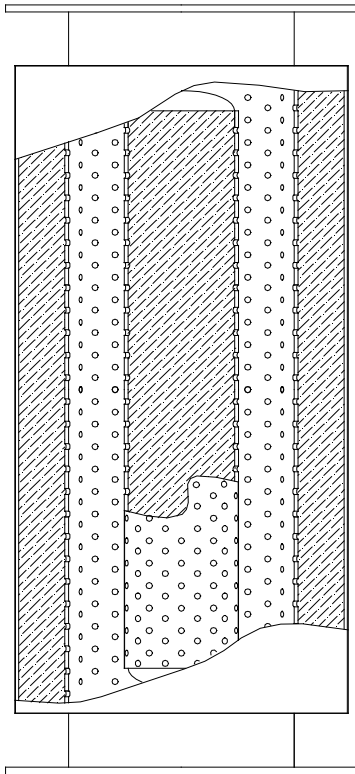




Model 317 Intake Silencer



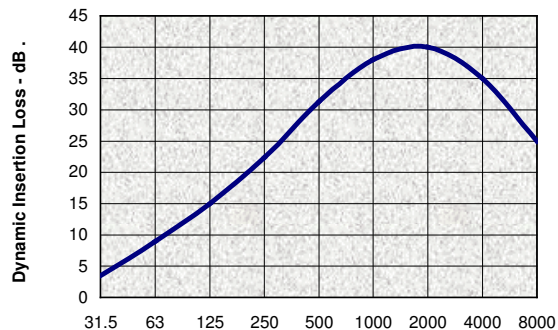
Standard Features:

- ✓ All Steel Welded Construction
- ✓ Quality Fabrication Techniques
- ✓ Hair Felt Absorptive Pack
- ✓ Maximum Operating Temperature of 250°F
- ✓ Plate Flanges to Match ASA 125# Flanges
- ✓ Prime Coated Exterior Surfaces

Optional Features:

- ✓ Materials as Specified
- ✓ Finish as Specified
- ✓ Pack Material as Specified
- ✓ Mounting Brackets
- ✓ Threaded Connections Available
- ✓ Companion Flanges
- ✓ Flange Drilling as Specified

Typical Performance

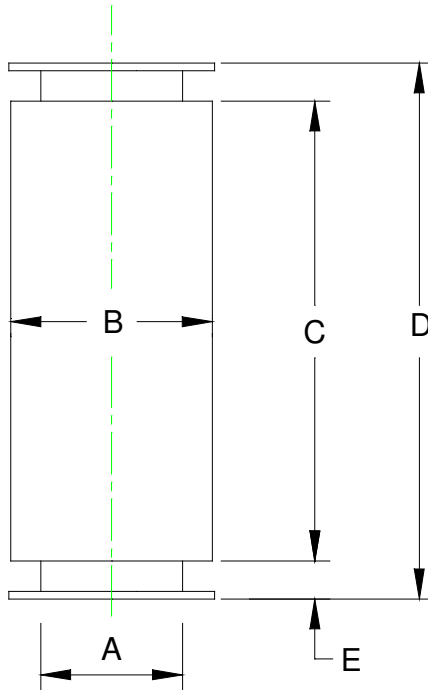


Application:

The **VANEC** Model 317 Intake Silencer is designed for use in suppressing the intake noise from high speed blowers, fans, engines and centrifugal air handling devices with an atmospheric suction.

The Model 317 Intake Silencer, when properly applied, will reduce intake noise to a community acceptable level for dwellings located further than 800 ft. from the intake opening. Silencer performance will depend upon actual operating conditions.

The **VANEC** Model 317 Intake Silencer may be mounted either vertically or horizontally.



VANEC Model 317

Size	Dimensions in Inches					Est.Wt. Lbs.
	A	B	C	D	E	
317-12	12	20	38	44	3	208
317-14	14	22	44	52	4	283
317-16	16	24	50	58	4	367
317-18	18	26	56	64	4	425
317-20	20	28	62	72	5	598
317-22	22	30	68	78	5	699
317-24	24	32	74	84	5	813
317-26	26	34	80	90	5	956
317-28	28	36	86	96	5	1,176
317-30	30	38	92	102	5	1,307
317-32	32	40	98	108	5	1,646
317-34	34	42	106	116	5	1,853
317-36	36	44	110	120	5	2,070
317-42	42	50	128	140	6	2,804
317-48	48	56	146	158	6	3,621
317-54	54	62	164	180	8	4,603
317-60	60	68	182	198	8	5,669

VANEC Industrial Silencers
716-827-4959

www.vanec.com