



**BUILDING PROFILE**

- ❖ NAME: NEW YORK TOWERS
- ❖ SQUARE FOOT: 392,100

**NYBSC SERVICES**

- ❖ DESIGN COGENERATIONS SYSTEM (750 KW)
- ❖ ABSORPTION CHILLER
- ❖ DOMESTIC HOT WATER AND HEATING

**NY Building Systems Consultant Inc. (NYBSC)** is happy to successfully completed the design for Trigeneration including Combined Heat and Power (CHP), Heating Hot Water, Domestic hot Water and Cooling. Project is started to savings the energy and cost as well as collect the incentives.

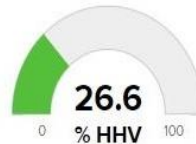
**Outstanding Performance Snapshot**

(Aug 2019 to Sep 2019)

**2,079**  
 Mcf  
 generator fuel consumed

**1,175**  
 MMBtu  
 heat used

Electric Efficiency



Thermal Efficiency



CHP Efficiency



**CHP Performance Program Metrics**

Aug 2019 to Sep 2019

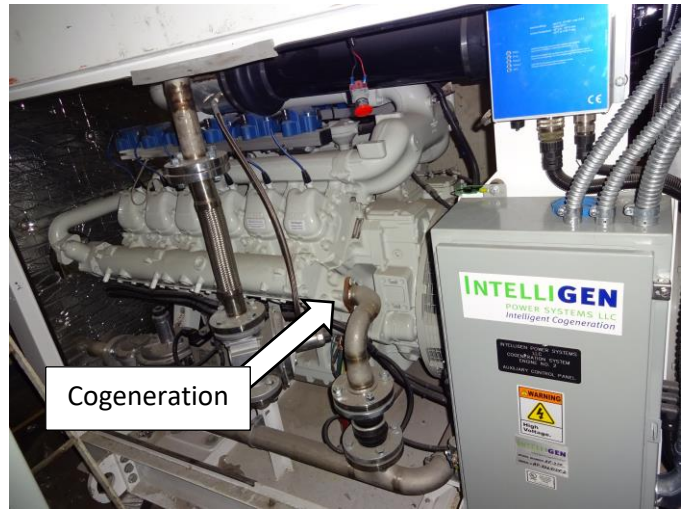
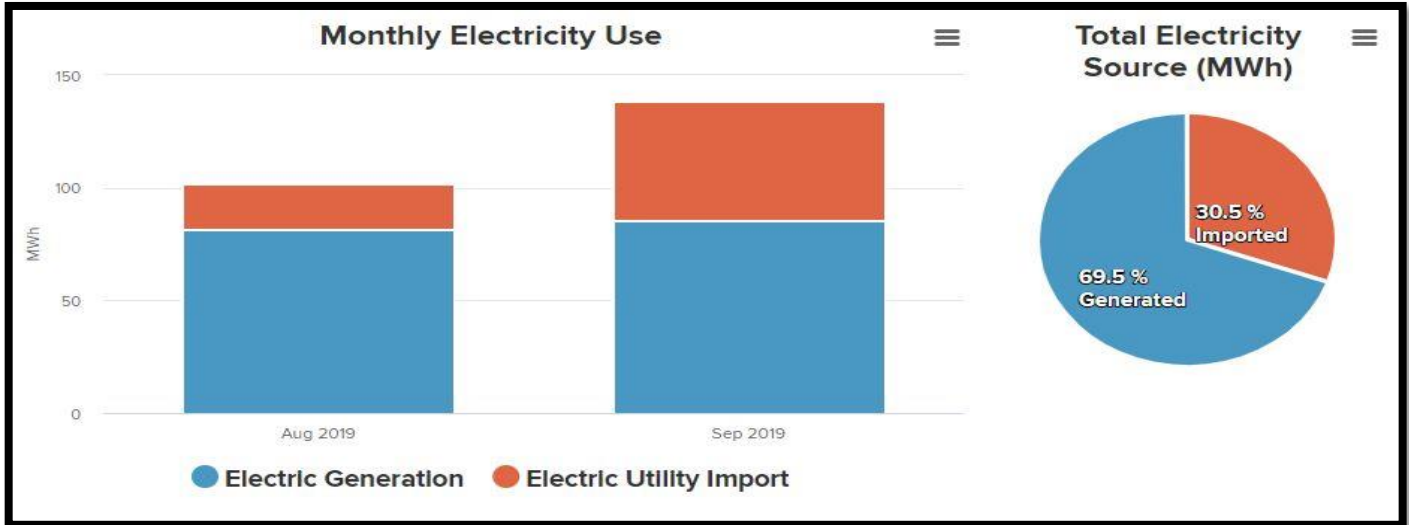
Peak Demand Reduction (kW <sub>P</sub> )	260 kW
Total Generation (kWh <sub>Δ</sub> )	167,219 kWh
Heat Recovered	1,175 MMBtu
Gas Consumed	2,079 Mcf

FCE <sub>CHP</sub> ?	95.0 % HHV
FCE <sub>CHP</sub> ?	90.4 % LHV

You can see the current CHP (Combined Heat and power) performance in NYSERDA

<https://der.nyserda.ny.gov/reports/view/performance/?project=1038>

Some More Efficient Onsite Production and Savings Information



**Cogeneration Installation**