

## Matre Forestry Consulting, Inc.

2549 Lafayette Plaza Dr  
Suite 204  
Albany GA 31707  
Office (229) 639 4973 Fax (229) 255 2910  
[www.matreforestry.com](http://www.matreforestry.com)



7/14/2020

Re: Timber Sale Bid Prospectus, Mitchell County GA

Dear Timber Buyers,

We are pleased to offer the following two timber sales. The sellers are related to each other and the two sales are adjacent to each other, so we are offering both sales through this one prospectus.

- Location/Access: On both sides of US 19 in Mitchell County GA, between Camilla & Baconton (see location map).
- Sale 1 Description: COLLINS, CHAPPELL A JR Sale, +-93 acres, 1999 Planted Slash Clearcut & 2<sup>nd</sup> thin (see sale map & volume reports).
- Sale 2 Description: KNOX, MARIANA COLLINS Sale, +-76 acres, 1983 Planted Slash Clearcut (see sale map & volume reports).
- Type of Sale: Collins Sale is per ton; Knox Sale is lump sum.
- Sale Volume Estimate: *Disclaimer: The volume and acreage estimates are not guaranteed. It is understood that the bidders rely on their own estimates and inspections for the computation of the bid price. The field cruise was performed by contract forest technician Scott Rabon and was worked up by GA Registered Forester Mike Matre. Please see attached cruise reports.*
- Property Legal Information: See sale map.
- Showing: You may cruise or inspect the timber and property at your convenience.
- Contract: Both sales are standard 12 month contracts plus 6 month wet weather clause. Closing to take place within 3 weeks of bid acceptance, assuming clear title. Collins is per ton with a \$20,000 advance due at closing. Knox is lump sum.
- Other: Knox sale boundaries are marked with blue paint. Matre Forestry will mark harvest trees in the Collins 2<sup>nd</sup> thinning, and will flag Collins clearcut where necessary. Knox would like any large spreading live oaks to be left unharvested.
- Georgia Best Management Practices (BMP's): The buyer agrees to log the sale in accordance with BMP's.
- Bid Instructions: If you would like to bid on the Collins Sale, submit a per ton by product sealed bid. If you would like to bid on the Knox Sale, submit a lump sum sealed bid.
- Bid opening location: Both bid openings will be held at the Matre Forestry office located at: 2549 Lafayette Plaza Suite 204 Albany GA 31707. If you cannot attend the bid opening you can email, text, fax, call, or mail your bid prior to the sale. Please verify that we received your bid prior to the bid opening.
- Collins Bid Opening Time & Date: 10 AM Thursday 7/30/2020
- Knox Bid Opening Time & Date: 10 AM Tuesday 8/11/2020
- Notification of Bid Results: Buyers and the seller may attend and witness the bid openings. On the Collins per ton by product sale, we will announce our estimated blended price for each bid. We will not announce the bidders specific per ton bid by product, just our estimated blended price, out of respect for bidder pricing privacy. For the Knox lump sum sale, we will announce the

lump sum bid amounts. We will provide this information to bidders that cannot attend the bid opening, as soon as practical after the sale.

NOTE: Please make sure you are on our Timber Buyer email list by visiting <http://www.matreforestry.com/> and clicking on "Subscribe to the Matre Forestry Newsletter". Be sure and check the "Timber Buyer" box. This bid prospectus can be digitally viewed and downloaded or printed at <https://www.matreforestry.com/timber-sales.html> .

We appreciate your interest in the sale. Please contact us if you have any questions. We hope to see you at the bid opening, but if you cannot make it, please get your bid to us prior to the bid opening.

Sincerely,

*M. Matre*

Mike Matre, ALC, ACF, RF  
President, Matre Forestry Consulting, Inc.  
Georgia & Alabama Registered Forester (GA# 2486, AL# GA2486)  
Georgia & Alabama Licensed Real Estate Broker  
Mobile (229) 869-1111  
[mike@matreforestry.com](mailto:mike@matreforestry.com)



*Established in 1999, Matre Forestry Consulting, Inc. of Albany, Georgia is a full service forestry consulting company and real estate brokerage. On behalf of our clients, our services include timber sales & management, land sales and acquisitions, timber inventories/cruising, appraisals, marking, prescribed burning, reforestation, GPS & GIS mapping, investment & market analysis, contract forestry services, wildlife habitat improvement, and hunting plantation development.*

# TIMBER SALE MAP

## Collins Tract & Knox Tract

### Mitchell County GA

Sale Area #	Description	Acres +-
1	1_CollinsCC	31.9
2	2_Collins2ndTh	61.1
3	3_KnoxCC	75.6

Sale is two different sales:

\*Collins Sale is per ton 2nd thin & clearcut of 1999 Planted Slash, +-93 acres

\*Knox Sale is lump sum clearcut of 1983 Planted Slash, +-75.6 acres.

\*See prospectus for details.

Collins is Parcel 00780-006-000, LL 313 LD 9

Knox is Parcel 00780-017-000, LL 348 LD 9

\*Sale Areas are labeled with Sale Area # & Acres+-.

\*OUT areas are not labeled.

#### Legend

#### TractName

Collins

Knox

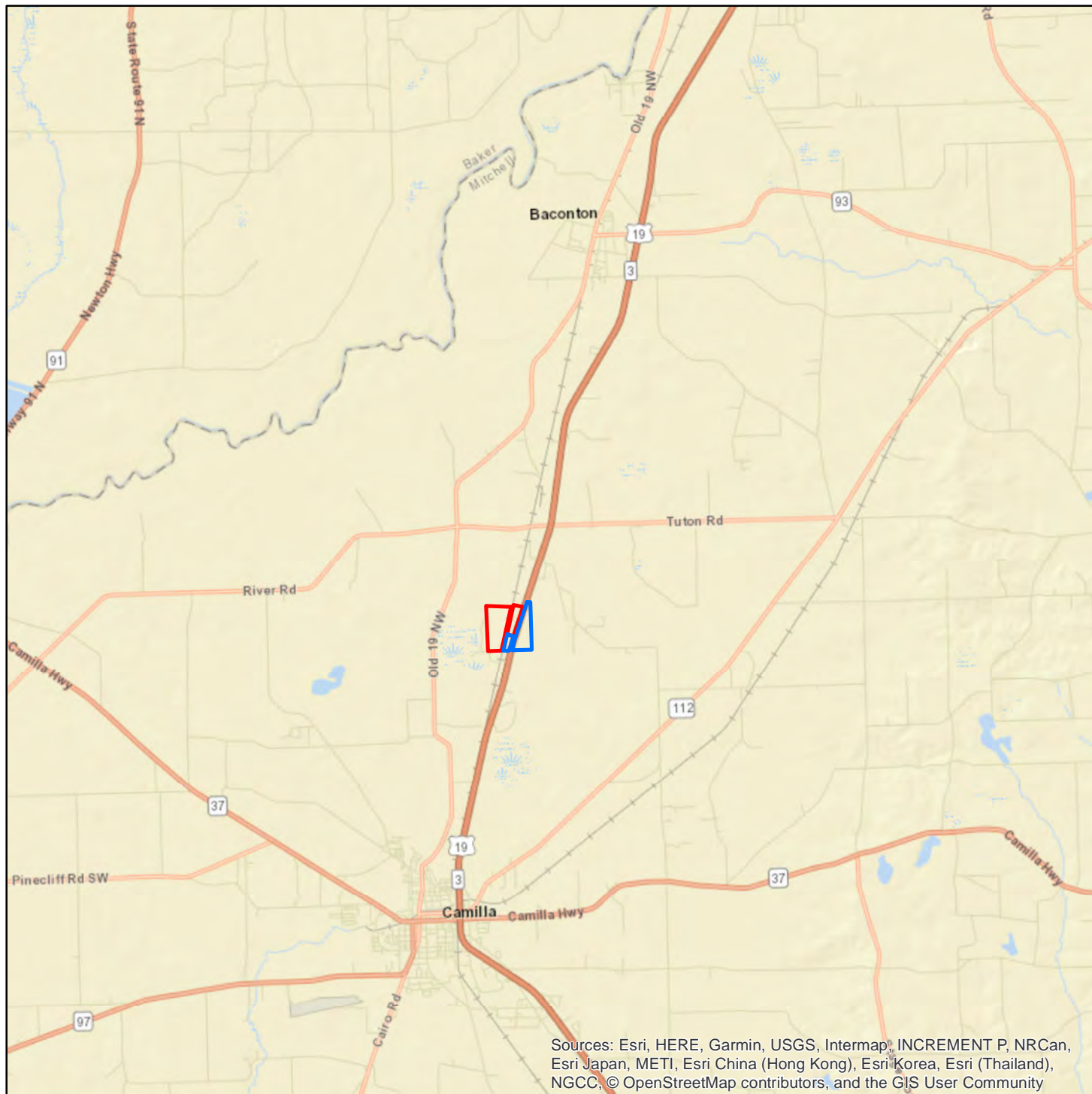
World Street Map

Date: 7/14/2020



www.matreforestry.com  
Albany GA 229-639-4973

Disclaimer: Map boundaries, acres, timber descriptions, and all other map data is not guaranteed. The map is not a survey plat. Mapped in ArcMap 10.5 GIS mapping software.



Sources: Esri, HERE, Garmin, USGS, Intermap, INCREMENT P, NRCan, Esri Japan, METI, Esri China (Hong Kong), Esri Korea, Esri (Thailand), NGCC, © OpenStreetMap contributors, and the GIS User Community

1:137,408



1 in = 11,450.7 feet

1 inch equals 2.17 miles

# TIMBER SALE MAP

## Collins Tract & Knox Tract

### Mitchell County GA

Sale Area #	Description	Acres +-
1	1_CollinsCC	31.9
2	2_Collins2ndTh	61.1
3	3_KnoxCC	75.6

Sale is two different sales:  
 \*Collins Sale is per ton 2nd thin & clearcut of 1999 Planted Slash, +-93 acres  
 \*Knox Sale is lump sum clearcut of 1983 Planted Slash, +-75.6 acres.  
 \*Knox Clearcut boundary marked blue.  
 \*See prospectus for details.

Collins is Parcel 00780-006-000, LL 313 LD 9  
 Knox is Parcel 00780-017-000, LL 348 LD 9

\*Sale Areas are labeled with Sale Area # & Acres+-.  
 \*OUT areas are not labeled.

#### Legend

— US 19

- - Lines

#### TractName

▭ Collins

▭ Knox

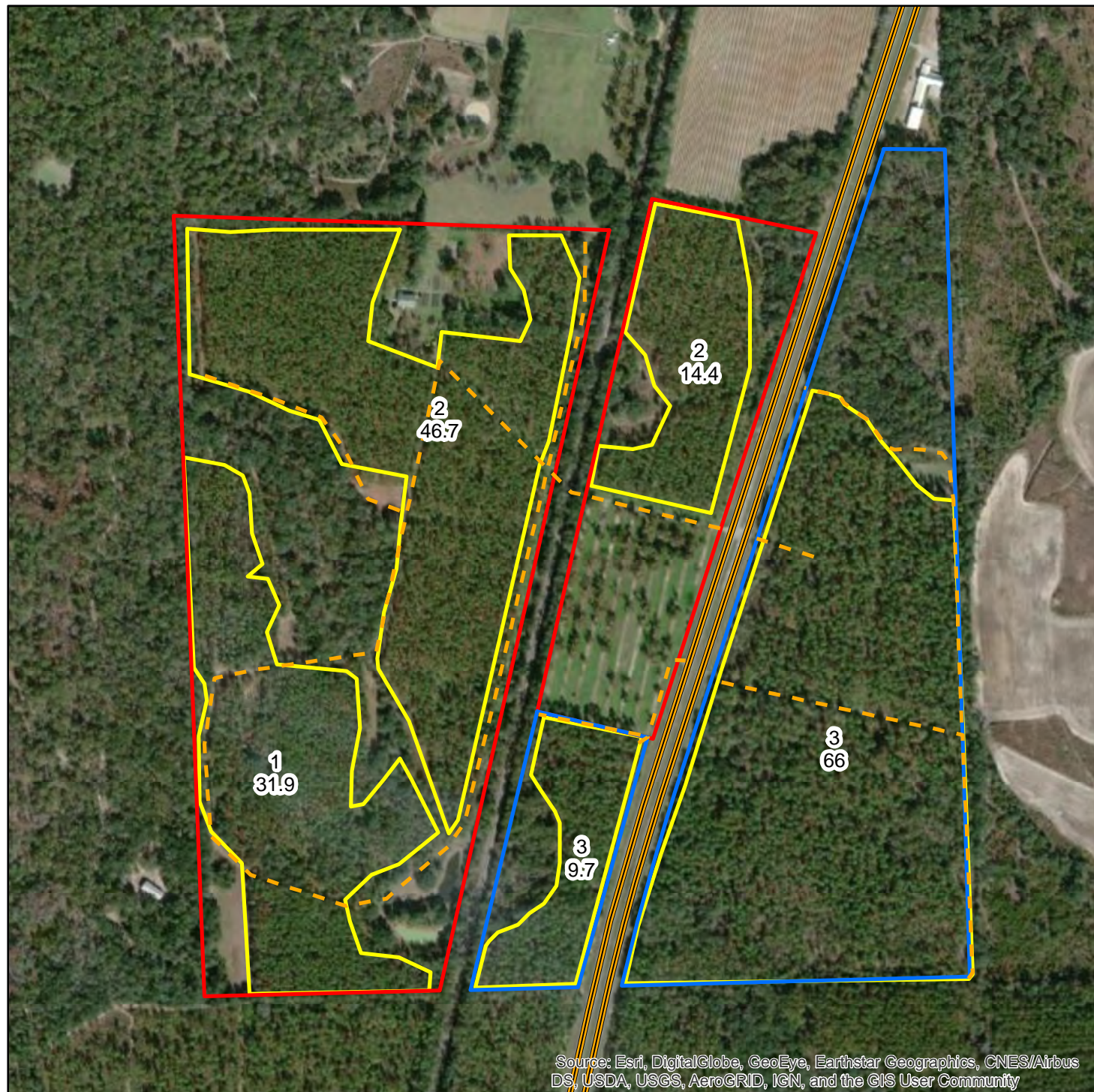
▭ Stands

Date: 7/14/2020

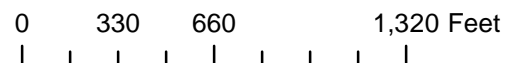


www.matreforestry.com  
 Albany GA 229-639-4973

Disclaimer: Map boundaries, acres, timber descriptions, and all other map data is not guaranteed. The map is not a survey plat. Mapped in ArcMap 10.5 GIS mapping software.



Source: Esri, DigitalGlobe, GeoEye, Earthstar Geographics, CNES/Airbus DS, USDA, USGS, AeroGRID, IGN, and the GIS User Community



1:7,920      1 in = 660 feet  
 1 inch equals 0.13 miles

**Timber Sale Volume Executive Summary**  
**Collins Sale & Knox Sale**  
**7/14/2020**



*Disclaimer: The estimates are not guaranteed. See full prospectus for details.*

Collins Sale Harvest Estimate (per ton sale)					ALL VOLUME IS IN TONS											
Sale Area #	Harvest Type	Planted Year	Planted Species	Acres	Pine Pulp	Pine CNS	Pine Logs	Pine Tops	Total Pine	H Pulp	H Pallet	H Logs	H Tops	H Total	Grand Total	per Acre
1	Clearcut	1999	Slash	31.9	939	549	45	118	1651	31	0	0	0	31	1682	52.7
2	2nd Thin	1999	Slash	61.1	592	939	28	204	1763	0	0	0	0	0	1763	28.9
Total:				93	1531	1488	73	322	3414	31	0	0	0	31	3445	37.0

Knox Sale Harvest Estimate (lump sum sale)					ALL VOLUME IS IN TONS											
Sale Area #	Harvest Type	Planted Year	Planted Species	Acres	Pine Pulp	Pine CNS	Pine Logs	Pine Tops	Total Pine	H Pulp	H Pallet	H Logs	H Tops	H Total	Grand Total	per Acre
3	Clearcut	1983	Slash	75.6	239	107	3706	1184	5236	527	11	11	18	567	5803	76.8

\*Some amount of the pine CNS & log volume may meet pole specs.

## Summary Report By Strata

<b>Tract:</b> Collins Tract Sale & Knox Tract Sale <b>Cruiser:</b> SR <b>Location:</b> Mitchell County GA  <b>Owner:</b> Collins; Knox	<b>Matre Forestry Consulting, Inc.</b> 2549 Lafayette Plaza Dr Albany, GA 31707 <b>Phone:</b> 229-639-4973 <b>Fax:</b> 229-255-2910 <b>E-Mail:</b> mike@matreforestry.com	<b>Total Acres:</b> 168.6 <b>Number of Plots:</b> 125 <b>Cruise Method:</b> Point <b>BAF:</b> 10  <b>Cruise Date:</b> 07/14/2020
---	---	---

### COLLINS CLEARCUT

**Stratum** 1\_CollinsCC                      **Acres** 31.9                      **Plots:** 27

#### Pine

Product	Stratum Total				Average Acre					Average Tree	
	Trees	Tons	DMBF	SMBF	BA	Trees	Tons	DMBF	SMBF	DBH	MerchHt
<b>Planted Pine</b>											
Pulpwood	4,872	939			47.4	153	29			7.5	34.2
Chip-N-Saw	1,464	549	46	54	25.9	46	17	1.444	1.688	10.1	31.0
Sawtimber	57	45	4	6	1.9	2	1	0.128	0.200	13.8	36.7
<b>Sub-Total</b>	<b>6,393</b>	<b>1,533</b>	<b>50</b>	<b>60</b>	<b>75.2</b>	<b>200</b>	<b>48</b>	<b>1.572</b>	<b>1.888</b>	<b>8.1</b>	<b>33.5</b>
<b>Pine Topwood</b>											
Topwood		118					4				
<b>Pine Total</b>	<b>6,393</b>	<b>1,651</b>	<b>50</b>	<b>60</b>	<b>75.2</b>	<b>200</b>	<b>52</b>	<b>1.572</b>	<b>1.888</b>	<b>8.1</b>	<b>33.5</b>

#### Hardwood

Product	Stratum Total				Average Acre					Average Tree	
	Trees	Tons	DMBF	SMBF	BA	Trees	Tons	DMBF	SMBF	DBH	MerchHt
<b>Hard Hardwoods</b>											
Pulpwood	146	31			1.5	5	1			7.7	28.1
<b>Sub-Total</b>	<b>146</b>	<b>31</b>			<b>1.5</b>	<b>5</b>	<b>1</b>	<b>0.000</b>		<b>7.7</b>	<b>28.1</b>
<b>Hardwood Topwood</b>											
Topwood		0					0				
<b>Hdwd. Total</b>	<b>146</b>	<b>31</b>			<b>1.5</b>	<b>5</b>	<b>1</b>	<b>0.000</b>	<b>0.000</b>	<b>7.7</b>	<b>28.1</b>
<b>Stratum Total</b>	<b>6,538</b>	<b>1,681</b>	<b>50</b>	<b>60</b>	<b>76.7</b>	<b>205</b>	<b>53</b>	<b>1.572</b>	<b>1.888</b>	<b>8.1</b>	<b>33.4</b>

*Summary Report By Strata*  
**COLLINS 2ND THINNING, HARVEST ESTIMATE**

*Stratum* 2\_CollinsThin

*Acres* 61.1

*Plots:* 28

**Pine**

<i>Stratum Total</i>					<i>Average Acre</i>					<i>Average Tree</i>	
<i>Product</i>	<i>Trees</i>	<i>Tons</i>	<i>DMBF</i>	<i>SMBF</i>	<i>BA</i>	<i>Trees</i>	<i>Tons</i>	<i>DMBF</i>	<i>SMBF</i>	<i>DBH</i>	<i>MerchHt</i>
<b>Planted Pine</b>											
Pulpwood	1,628	592			13.2	27	10			9.4	43.8
Chip-N-Saw	2,396	939	79	95	22.1	39	15	1.286	1.554	10.1	32.7
Sawtimber	47	28	2	4	0.7	1	0	0.038	0.061	13.0	28.0
<b>Sub-Total</b>	<b>4,071</b>	<b>1,559</b>	<b>81</b>	<b>99</b>	<b>36.1</b>	<b>67</b>	<b>26</b>	<b>1.324</b>	<b>1.615</b>	<b>9.9</b>	<b>37.1</b>
<b>Pine Topwood</b>											
Topwood		204					3				
<b>Pine Total</b>	<b>4,071</b>	<b>1,763</b>	<b>81</b>	<b>99</b>	<b>36.1</b>	<b>67</b>	<b>29</b>	<b>1.324</b>	<b>1.615</b>	<b>9.9</b>	<b>37.1</b>
<b>Stratum Total</b>	<b>4,071</b>	<b>1,763</b>	<b>81</b>	<b>99</b>	<b>36.1</b>	<b>67</b>	<b>29</b>	<b>1.324</b>	<b>1.615</b>	<b>9.9</b>	<b>37.1</b>

*Summary Report By Strata*

**KNOX CLEARCUT**

*Stratum 3\_KnoxCC*

*Acres 75.6*

*Plots: 70*

**Pine**

<i>Stratum Total</i>					<i>Average Acre</i>					<i>Average Tree</i>	
<i>Product</i>	<i>Trees</i>	<i>Tons</i>	<i>DMBF</i>	<i>SMBF</i>	<i>BA</i>	<i>Trees</i>	<i>Tons</i>	<i>DMBF</i>	<i>SMBF</i>	<i>DBH</i>	<i>MerchHt</i>
<b>Planted Pine</b>											
Pulpwood	264	239			3.3	3	3			12.7	57.1
Chip-N-Saw	182	107	9	13	1.7	2	1	0.114	0.166	11.4	40.9
Sawtimber	3,113	3,706	439	601	56.3	41	49	5.813	7.948	15.7	41.3
<b>Sub-Total</b>	<b>3,558</b>	<b>4,053</b>	<b>448</b>	<b>613</b>	<b>61.3</b>	<b>47</b>	<b>54</b>	<b>5.926</b>	<b>8.114</b>	<b>15.3</b>	<b>42.5</b>
<b>Pine Topwood</b>											
Topwood		1,184					16				
<b>Pine Total</b>	<b>3,558</b>	<b>5,237</b>	<b>448</b>	<b>613</b>	<b>61.3</b>	<b>47</b>	<b>69</b>	<b>5.926</b>	<b>8.114</b>	<b>15.3</b>	<b>42.5</b>

**Hardwood**

<i>Stratum Total</i>					<i>Average Acre</i>					<i>Average Tree</i>	
<i>Product</i>	<i>Trees</i>	<i>Tons</i>	<i>DMBF</i>	<i>SMBF</i>	<i>BA</i>	<i>Trees</i>	<i>Tons</i>	<i>DMBF</i>	<i>SMBF</i>	<i>DBH</i>	<i>MerchHt</i>
<b>Hard Hardwoods</b>											
Pulpwood	1,952	513			9.0	26	7			7.8	31.6
Pallet	34	11	1	1	0.3	0	0	0.008	0.013	10.8	16.0
<b>Sub-Total</b>	<b>1,986</b>	<b>523</b>	<b>1</b>	<b>1</b>	<b>9.3</b>	<b>26</b>	<b>7</b>	<b>0.008</b>	<b>0.013</b>	<b>7.9</b>	<b>31.3</b>
<b>Soft Hardwoods</b>											
Pulpwood	49	14			0.3	1	0			9.0	34.7
<b>Sub-Total</b>	<b>49</b>	<b>14</b>			<b>0.3</b>	<b>1</b>	<b>0</b>	<b>0.000</b>		<b>9.0</b>	<b>34.7</b>
<b>Water/Misc Oaks</b>											
Sawtimber	11	11	1	1	0.3	0	0	0.016	0.019	18.6	16.0
<b>Sub-Total</b>	<b>11</b>	<b>11</b>	<b>1</b>	<b>1</b>	<b>0.3</b>	<b>0</b>	<b>0</b>	<b>0.016</b>	<b>0.019</b>	<b>18.6</b>	<b>16.0</b>
<b>Hardwood Topwood</b>											
Topwood		18					0				
<b>Hdwd. Total</b>	<b>2,046</b>	<b>567</b>	<b>2</b>	<b>2</b>	<b>9.9</b>	<b>27</b>	<b>7</b>	<b>0.025</b>	<b>0.033</b>	<b>7.9</b>	<b>31.3</b>
<b>Stratum Total</b>	<b>5,604</b>	<b>5,803</b>	<b>450</b>	<b>616</b>	<b>71.1</b>	<b>74</b>	<b>77</b>	<b>5.951</b>	<b>8.147</b>	<b>12.6</b>	<b>38.4</b>
<b>Grand Total</b>	<b>16,214</b>	<b>9,248</b>	<b>581</b>	<b>775</b>	<b>59.5</b>	<b>96</b>	<b>55</b>	<b>3.446</b>	<b>4.596</b>	<b>10.2</b>	<b>36.0</b>

\*Some amount of the pine CNS & log volume may meet pole specs.



## Summary Product By DBH Report

<b>Tract:</b> Collins Tract 1_Clearcut <b>Cruiser:</b> SR <b>Location:</b> Mitchell County GA <b>Owner:</b> Collins; Knox	<b>Matre Forestry Consulting, Inc.</b> 2549 Lafayette Plaza Dr Albany, GA 31707 <b>Phone:</b> 229-639-4973 <b>Fax:</b> 229-255-2910 <b>E-Mail:</b> mike@matreforestry.com	<b>Total Acres:</b> 32 <b>Number of Plots:</b> 27 <b>Cruise Method:</b> Point <b>BAF:</b> 10  <b>Cruise Date:</b> 07/14/2020
--	---	---

### Pine

#### COLLINS CLEARCUT

Planted Pine							Total Tract						Average Acre				Average Tree	
Sawtimber	DBH	# Trees	Tons	Cords	SMBF	Cu.Ft.	BA	# Trees	Tons	Cords	SMBF	Cu.Ft.	SL	CF/Ft	Merch	Ht		
	13	13	8	3	1	234	0.4	0	0	0	0.034	7	0.57		32.0			
	14	44	37	14	5	1,073	1.5	1	1	0	0.166	34	0.64		38.0			
<b>Sawtimber Total</b>		<b>57</b>	<b>45</b>	<b>17</b>	<b>6</b>	<b>1,307</b>	<b>1.9</b>	<b>2</b>	<b>1</b>	<b>1</b>	<b>0.200</b>	<b>41</b>	<b>0.63</b>		<b>36.7</b>			

Chip-N-Saw	DBH	# Trees	Tons	Cords	SMBF	Cu.Ft.	BA	# Trees	Tons	Cords	SMBF	Cu.Ft.	SL	CF/Ft	Merch	Ht
	9	401	102	38	8	2,821	5.6	13	3	1	0.254	88	0.27		26.5	
	10	563	203	76	19	5,614	9.6	18	6	2	0.581	176	0.32		31.4	
	11	394	183	69	20	5,135	8.1	12	6	2	0.616	161	0.38		34.2	
	12	105	60	23	8	1,710	2.6	3	2	1	0.237	54	0.47		34.3	
<b>Chip-N-Saw Total</b>		<b>1,464</b>	<b>549</b>	<b>206</b>	<b>54</b>	<b>15,280</b>	<b>25.9</b>	<b>46</b>	<b>17</b>	<b>6</b>	<b>1.688</b>	<b>479</b>	<b>0.34</b>		<b>31.0</b>	

Pulpwood	DBH	# Trees	Tons	Cords	SMBF	Cu.Ft.	BA	# Trees	Tons	Cords	SMBF	Cu.Ft.	SL	CF/Ft	Merch	Ht
	5	87	6	2		151	0.4	3	0	0		5	0.00		24.2	
	6	842	88	33		2,260	5.2	26	3	1		71	0.00		27.0	
	7	1,547	242	91		6,384	13.0	49	8	3		200	0.00		32.1	
	8	1,591	351	131		9,488	17.4	50	11	4		297	0.00		36.9	
	9	722	220	82		6,063	10.0	23	7	3		190	0.00		41.7	
	10	65	23	9		640	1.1	2	1	0		20	0.00		39.6	
	11	18	8	3		224	0.4	1	0	0		7	0.00		42.6	
<b>Pulpwood Total</b>		<b>4,872</b>	<b>939</b>	<b>352</b>	<b>0</b>	<b>25,209</b>	<b>47.4</b>	<b>153</b>	<b>29</b>	<b>11</b>		<b>790</b>	<b>0.00</b>		<b>34.2</b>	

<b>Planted Pine Total</b>		<b>6,393</b>	<b>1,533</b>	<b>574</b>	<b>60</b>	<b>41,796</b>	<b>75.2</b>	<b>200</b>	<b>48</b>	<b>18</b>	<b>1.888</b>	<b>1,310</b>	<b>0.35</b>		<b>33.5</b>
---------------------------	--	--------------	--------------	------------	-----------	---------------	-------------	------------	-----------	-----------	--------------	--------------	-------------	--	-------------

#### Pine Topwood

Topwood			118	44					4	1.4						
<b>Pine Total</b>		<b>6,393</b>	<b>1,651</b>	<b>618</b>	<b>60</b>	<b>41,796</b>	<b>75.2</b>	<b>200</b>	<b>52</b>	<b>19</b>	<b>1.888</b>	<b>1,310</b>	<b>0.35</b>		<b>33.5</b>	

COLLINS CLEARCUT  
*Product By DBH Report*

<b>Hardwood</b>
-----------------

<b>Hard Hardwoods</b>		<i>Total Tract</i>					<i>Average Acre</i>					<i>Average Tree</i>			
<b>Pulpwood</b>	<i>DBH</i>	<i># Trees</i>	<i>Tons</i>	<i>Cords</i>	<i>SMBF</i>	<i>Cu.Ft.</i>	<i>BA</i>	<i># Trees</i>	<i>Tons</i>	<i>Cords</i>	<i>SMBF</i>	<i>Cu.Ft.</i>	<i>SL CF/Ft</i>	<i>MerchHt</i>	
	7	44	7	2		171	0.4	1	0	0		5	0.00	24.6	
	8	102	24	8		580	1.1	3	1	0		18	0.00	29.6	
<b>Pulpwood Total</b>		<b>146</b>	<b>31</b>	<b>11</b>	<b>0</b>	<b>751</b>	<b>1.5</b>	<b>5</b>	<b>1</b>	<b>0</b>		<b>24</b>	<b>0.00</b>	<b>28.1</b>	
<b>Hard Hardwoods To</b>		<b>146</b>	<b>31</b>	<b>11</b>	<b>0</b>	<b>751</b>	<b>1.5</b>	<b>5</b>	<b>1</b>	<b>0</b>		<b>24</b>	<b>#Num!</b>	<b>28.1</b>	
<b>Hardwood Topwood</b>															
Topwood															
<b>Hardwood Total</b>		<b>146</b>			<b>0</b>	<b>751</b>	<b>1.5</b>	<b>5</b>				<b>24</b>	<b>#Num!</b>	<b>28.1</b>	
<b>Grand Total</b>		<b>6,538</b>			<b>60</b>	<b>42,548</b>	<b>76.7</b>	<b>205</b>				<b>1,888</b>	<b>1,334</b>	<b>0.35</b>	<b>33.4</b>

## Summary Product By DBH Report

<b>Tract:</b> Collins Tract Sale 2_2ndThin <b>Cruiser:</b> SR <b>Location:</b> Mitchell County GA <b>Owner:</b> Collins; Knox	<b>Matre Forestry Consulting, Inc.</b> 2549 Lafayette Plaza Dr Albany, GA 31707 <b>Phone:</b> 229-639-4973 <b>Fax:</b> 229-255-2910 <b>E-Mail:</b> mike@matreforestry.com	<b>Total Acres:</b> 61 <b>Number of Plots:</b> 28 <b>Cruise Method:</b> Point <b>BAF:</b> 10  <b>Cruise Date:</b> 07/14/2020
--	---	---

### Pine

#### COLLINS 2ND THINNING, HARVEST ESTIMATE

Planted Pine							Total Tract						Average Acre				Average Tree	
Sawtimber	DBH	# Trees	Tons	Cords	SMBF	Cu.Ft.	BA	# Trees	Tons	Cords	SMBF	Cu.Ft.	SL	CF/Ft	Merch	Ht		
	13	47	28	10	4	792	0.7	1	0	0	0.061	13	0.60		28.0			
<b>Sawtimber Total</b>		<b>47</b>	<b>28</b>	<b>10</b>	<b>4</b>	<b>792</b>	<b>0.7</b>	<b>1</b>	<b>0</b>	<b>0</b>	<b>0.061</b>	<b>13</b>	<b>0.60</b>		<b>28.0</b>			

Chip-N-Saw	DBH	# Trees	Tons	Cords	SMBF	Cu.Ft.	BA	# Trees	Tons	Cords	SMBF	Cu.Ft.	SL	CF/Ft	Merch	Ht
	9	642	176	66	14	4,883	4.6	11	3	1	0.236	80	0.26		28.9	
	10	920	353	132	34	9,748	8.2	15	6	2	0.560	160	0.32		33.4	
	11	694	334	125	37	9,352	7.5	11	5	2	0.601	153	0.38		35.2	
	12	139	77	29	10	2,173	1.8	2	1	0	0.157	36	0.49		32.0	
<b>Chip-N-Saw Total</b>		<b>2,396</b>	<b>939</b>	<b>352</b>	<b>95</b>	<b>26,156</b>	<b>22.1</b>	<b>39</b>	<b>15</b>	<b>6</b>	<b>1.554</b>	<b>428</b>	<b>0.33</b>		<b>32.7</b>	

Pulpwood	DBH	# Trees	Tons	Cords	SMBF	Cu.Ft.	BA	# Trees	Tons	Cords	SMBF	Cu.Ft.	SL	CF/Ft	Merch	Ht
	8	438	97	36		2,611	2.5	7	2	1		43	0.00		36.9	
	9	593	191	72		5,287	4.3	10	3	1		87	0.00		44.6	
	10	160	65	24		1,776	1.4	3	1	0		29	0.00		45.6	
	11	331	162	61		4,517	3.6	5	3	1		74	0.00		46.1	
	12	83	58	22		1,646	1.1	1	1	0		27	0.00		57.4	
	13	24	19	7		539	0.4	0	0	0		9	0.00		56.6	
<b>Pulpwood Total</b>		<b>1,628</b>	<b>592</b>	<b>222</b>	<b>0</b>	<b>16,377</b>	<b>13.2</b>	<b>27</b>	<b>10</b>	<b>4</b>		<b>268</b>	<b>0.00</b>		<b>43.8</b>	

<b>Planted Pine Total</b>		<b>4,071</b>	<b>1,559</b>	<b>584</b>	<b>99</b>	<b>43,326</b>	<b>36.1</b>	<b>67</b>	<b>26</b>	<b>10</b>	<b>1.615</b>	<b>709</b>	<b>0.34</b>		<b>37.1</b>
---------------------------	--	--------------	--------------	------------	-----------	---------------	-------------	-----------	-----------	-----------	--------------	------------	-------------	--	-------------

#### Pine Topwood

Topwood			204	77					3	1.3						
<b>Pine Total</b>		<b>4,071</b>	<b>1,763</b>	<b>660</b>	<b>99</b>	<b>43,326</b>	<b>36.1</b>	<b>67</b>	<b>29</b>	<b>11</b>	<b>1.615</b>	<b>709</b>	<b>0.34</b>		<b>37.1</b>	

<b>Grand Total</b>		<b>4,071</b>			<b>99</b>	<b>43,326</b>	<b>36.1</b>	<b>67</b>			<b>1.615</b>	<b>709</b>	<b>0.34</b>		<b>37.1</b>
--------------------	--	--------------	--	--	-----------	---------------	-------------	-----------	--	--	--------------	------------	-------------	--	-------------

## Summary Product By DBH Report

<b>Tract:</b> Knox Tract Sale <b>Cruiser:</b> SR <b>Location:</b> Mitchell County GA <b>Owner:</b> Collins; Knox	<b>Matre Forestry Consulting, Inc.</b> 2549 Lafayette Plaza Dr Albany, GA 31707 <b>Phone:</b> 229-639-4973 <b>Fax:</b> 229-255-2910 <b>E-Mail:</b> mike@matreforestry.com	<b>Total Acres:</b> 76 <b>Number of Plots:</b> 70 <b>Cruise Method:</b> Point <b>BAF:</b> 10  <b>Cruise Date:</b> 07/14/2020
---	---	---

### Pine

## KNOX CLEARCUT

Planted Pine			Total Tract				Average Acre					Average Tree		
Sawtimber	DBH	# Trees	Tons	DMBF	SMBF	Cu.Ft.	BA	# Trees	Tons	DMBF	SMBF	Cu.Ft.	SL CF/Ft	MerchHt
	12	55	34	3	4	961	0.6	1	0	0.033	0.057	13	0.47	37.1
	13	141	99	9	14	2,838	1.7	2	1	0.117	0.187	38	0.58	34.7
	14	647	545	54	81	15,721	9.1	9	7	0.716	1.075	208	0.67	36.4
	15	634	687	76	108	19,961	10.3	8	9	0.999	1.432	264	0.75	42.1
	16	580	718	84	116	20,990	10.7	8	9	1.114	1.535	278	0.84	43.0
	17	576	823	104	137	24,188	12.0	8	11	1.371	1.819	320	0.95	44.4
	18	342	544	73	93	16,060	8.0	5	7	0.965	1.236	212	1.07	44.0
	19	88	151	21	27	4,471	2.3	1	2	0.284	0.352	59	1.21	42.0
	20	30	56	8	10	1,660	0.9	0	1	0.110	0.133	22	1.35	41.3
	21	18	40	6	7	1,195	0.6	0	1	0.082	0.097	16	1.45	46.0
	22	4	10	2	2	306	0.1	0	0	0.021	0.025	4	1.56	48.0
<b>Sawtimber Total</b>		<b>3,113</b>	<b>3,706</b>	<b>439</b>	<b>601</b>	<b>108,351</b>	<b>56.3</b>	<b>41</b>	<b>49</b>	<b>5.813</b>	<b>7.948</b>	<b>1,433</b>	<b>0.84</b>	<b>41.3</b>

Chip-N-Saw	DBH	# Trees	Tons	DMBF	SMBF	Cu.Ft.	BA	# Trees	Tons	DMBF	SMBF	Cu.Ft.	SL CF/Ft	MerchHt
	10	20	6	0	0	154	0.1	0	0	0.006	0.006	2	0.32	24.3
	11	65	37	3	4	1,034	0.6	1	0	0.041	0.054	14	0.36	43.8
	12	96	64	5	8	1,825	1.0	1	1	0.067	0.107	24	0.45	42.3
<b>Chip-N-Saw Total</b>		<b>182</b>	<b>107</b>	<b>9</b>	<b>13</b>	<b>3,013</b>	<b>1.7</b>	<b>2</b>	<b>1</b>	<b>0.114</b>	<b>0.166</b>	<b>40</b>	<b>0.41</b>	<b>40.9</b>

\*Some amount of the pine CNS & log volume may meet pole specs.

# KNOX CLEARCUT

## Product By DBH Report

Planted Pine			Total Tract				Average Acre					Average Tree		
Pulpwood	DBH	# Trees	Tons	DMBF	SMBF	Cu.Ft.	BA	# Trees	Tons	DMBF	SMBF	Cu.Ft.	SL CF/Ft	MerchHt
	7	40	5			133	0.1	1	0			2	0.00	23.9
	10	20	9			258	0.1	0	0			3	0.00	53.8
	11	49	27			764	0.4	1	0			10	0.00	53.6
	12	14	10			271	0.1	0	0			4	0.00	57.2
	13	12	10			298	0.1	0	0			4	0.00	63.6
	14	51	49			1,397	0.7	1	1			18	0.00	59.3
	15	18	24			703	0.3	0	0			9	0.00	76.0
	16	23	37			1,069	0.4	0	0			14	0.00	77.4
	17	14	21			622	0.3	0	0			8	0.00	67.5
	18	18	35			1,045	0.4	0	0			14	0.00	76.5
	19	5	11			329	0.1	0	0			4	0.00	72.2
<b>Pulpwood Total</b>		<b>264</b>	<b>239</b>	<b>0</b>	<b>0</b>	<b>6,889</b>	<b>3.3</b>	<b>3</b>	<b>3</b>	<b>0.000</b>		<b>91</b>	<b>0.00</b>	<b>57.1</b>
<b>Planted Pine Total</b>		<b>3,558</b>	<b>4,053</b>	<b>448</b>	<b>613</b>	<b>118,253</b>	<b>61.3</b>	<b>47</b>	<b>54</b>	<b>5.926</b>	<b>8.114</b>	<b>1,564</b>	<b>0.82</b>	<b>42.5</b>
<b>Pine Topwood</b>														
Topwood			1,184						16					
<b>Pine Total</b>		<b>3,558</b>	<b>5,237</b>	<b>448</b>	<b>613</b>	<b>118,253</b>	<b>61.3</b>	<b>47</b>	<b>69</b>	<b>5.926</b>	<b>8.114</b>	<b>1,564</b>	<b>0.82</b>	<b>42.5</b>

# KNOX CLEARCUT

## Product By DBH Report

### Hardwood

<b>Hard Hardwoods</b>							<i>Total Tract</i>					<i>Average Acre</i>					<i>Average Tree</i>	
<b>Pallet</b>	<i>DBH</i>	<i># Trees</i>	<i>Tons</i>	<i>DMBF</i>	<i>SMBF</i>	<i>Cu.Ft.</i>	<i>BA</i>	<i># Trees</i>	<i>Tons</i>	<i>DMBF</i>	<i>SMBF</i>	<i>Cu.Ft.</i>	<i>SL CF/Ft</i>	<i>MerchHt</i>				
	10	20	5	0	0	132	0.1	0	0	0.004	0.006	2	0.42	16.0				
	12	14	5	0	1	134	0.1	0	0	0.004	0.007	2	0.61	16.0				
<b>Pallet Total</b>		<b>34</b>	<b>11</b>	<b>1</b>	<b>1</b>	<b>267</b>	<b>0.3</b>	<b>0</b>	<b>0</b>	<b>0.008</b>	<b>0.013</b>	<b>4</b>	<b>0.50</b>	<b>16.0</b>				

<b>Pulpwood</b>	<i>DBH</i>	<i># Trees</i>	<i>Tons</i>	<i>DMBF</i>	<i>SMBF</i>	<i>Cu.Ft.</i>	<i>BA</i>	<i># Trees</i>	<i>Tons</i>	<i>DMBF</i>	<i>SMBF</i>	<i>Cu.Ft.</i>	<i>SL CF/Ft</i>	<i>MerchHt</i>
	6	495	61			1,449	1.3	7	1			19	0.00	24.1
	7	485	92			2,217	1.7	6	1			29	0.00	29.8
	8	495	127			3,096	2.3	7	2			41	0.00	32.9
	9	171	60			1,469	1.0	2	1			19	0.00	37.0
	10	139	60			1,492	1.0	2	1			20	0.00	38.9
	11	115	62			1,556	1.0	2	1			21	0.00	41.5
	12	28	19			467	0.3	0	0			6	0.00	44.7
	14	20	20			515	0.3	0	0			7	0.00	51.0
	20	5	12			304	0.1	0	0			4	0.00	65.0
<b>Pulpwood Total</b>		<b>1,952</b>	<b>513</b>	<b>0</b>	<b>0</b>	<b>12,565</b>	<b>9.0</b>	<b>26</b>	<b>7</b>	<b>0.000</b>		<b>166</b>	<b>0.00</b>	<b>31.6</b>

<b>Hard Hardwoods To</b>	<b>1,986</b>	<b>523</b>	<b>1</b>	<b>1</b>	<b>12,832</b>	<b>9.3</b>	<b>26</b>	<b>7</b>	<b>0.008</b>	<b>0.013</b>	<b>170</b>	<b>0.50</b>	<b>31.3</b>
--------------------------	--------------	------------	----------	----------	---------------	------------	-----------	----------	--------------	--------------	------------	-------------	-------------

<b>Soft Hardwoods</b>							<i>Total Tract</i>					<i>Average Acre</i>					<i>Average Tree</i>	
<b>Pulpwood</b>	<i>DBH</i>	<i># Trees</i>	<i>Tons</i>	<i>DMBF</i>	<i>SMBF</i>	<i>Cu.Ft.</i>	<i>BA</i>	<i># Trees</i>	<i>Tons</i>	<i>DMBF</i>	<i>SMBF</i>	<i>Cu.Ft.</i>	<i>SL CF/Ft</i>	<i>MerchHt</i>				
	9	49	14			387	0.3	1	0			5	0.00	34.7				
<b>Pulpwood Total</b>		<b>49</b>	<b>14</b>	<b>0</b>	<b>0</b>	<b>387</b>	<b>0.3</b>	<b>1</b>	<b>0</b>	<b>0.000</b>		<b>5</b>	<b>0.00</b>	<b>34.7</b>				

<b>Soft Hardwoods Tot</b>	<b>49</b>	<b>14</b>	<b>0</b>	<b>0</b>	<b>387</b>	<b>0.3</b>	<b>1</b>	<b>0</b>	<b>0.000</b>			<b>5</b>	<b>#Num!</b>	<b>34.7</b>
---------------------------	-----------	-----------	----------	----------	------------	------------	----------	----------	--------------	--	--	----------	--------------	-------------

<b>Water/Misc Oaks</b>							<i>Total Tract</i>					<i>Average Acre</i>					<i>Average Tree</i>	
<b>Sawtimber</b>	<i>DBH</i>	<i># Trees</i>	<i>Tons</i>	<i>DMBF</i>	<i>SMBF</i>	<i>Cu.Ft.</i>	<i>BA</i>	<i># Trees</i>	<i>Tons</i>	<i>DMBF</i>	<i>SMBF</i>	<i>Cu.Ft.</i>	<i>SL CF/Ft</i>	<i>MerchHt</i>				
	17	7	5	1	1	145	0.1	0	0	0.008	0.010	2	1.32	16.0				
	21	4	5	1	1	145	0.1	0	0	0.009	0.010	2	2.02	16.0				
<b>Sawtimber Total</b>		<b>11</b>	<b>11</b>	<b>1</b>	<b>1</b>	<b>290</b>	<b>0.3</b>	<b>0</b>	<b>0</b>	<b>0.016</b>	<b>0.019</b>	<b>4</b>	<b>1.60</b>	<b>16.0</b>				

<b>Water/Misc Oaks To</b>	<b>11</b>	<b>11</b>	<b>1</b>	<b>1</b>	<b>290</b>	<b>0.3</b>	<b>0</b>	<b>0</b>	<b>0.016</b>	<b>0.019</b>	<b>4</b>	<b>1.60</b>	<b>16.0</b>
---------------------------	-----------	-----------	----------	----------	------------	------------	----------	----------	--------------	--------------	----------	-------------	-------------

# KNOX CLEARCUT

## *Product By DBH Report*

### Hardwood Topwood

Topwood		18						0					
<b>Hardwood Total</b>	<b>2,046</b>	<b>567</b>	<b>2</b>	<b>2</b>	<b>13,508</b>	<b>9.9</b>	<b>27</b>	<b>7</b>	<b>0.025</b>	<b>0.033</b>	<b>179</b>	<b>0.77</b>	<b>31.3</b>
<b>Grand Total</b>	<b>5,604</b>	<b>5,803</b>	<b>450</b>	<b>616</b>	<b>131,761</b>	<b>71.1</b>	<b>74</b>	<b>77</b>	<b>5.951</b>	<b>8.147</b>	<b>1,743</b>	<b>0.82</b>	<b>38.4</b>