

3 Port Tobacco Road

La Plata, MD 20646

301-934-2289

[blessedlambsoffice@gmail.com](mailto:blessedlambsoffice@gmail.com)

[www.blessedlambs.org](http://www.blessedlambs.org)

MSDE OCC License #124839



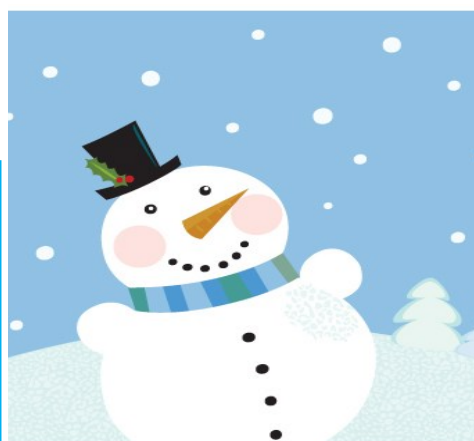
# Blessed Lambs Preschool



January, 2026

## Inclement Weather Policy

We follow the Charles County Public Schools for delays and closings. If schools are delayed 2 hours, the 3 & 4-year-old programs will begin at 11:30am and will end at 1:30pm as usual, the 2 year-old-program will be CLOSED. If schools are closed then the preschool is closed. Please watch or listen to the television or radio on questionable weather days and feel free to call the preschool number in the morning if you are not sure, 301-934-2289. You can also call the Charles Co. Public School hotline 301-934-7410.



## Morning Routine

The children are halfway through the school year and teachers continue to encourage them to try and do more things independently. Families can help build their confidence as well. Continue to give them the responsibility of the classroom arrival routine.

## 2026-2027 Registration



Registration information for the next school year will be coming home the week of January 5, 2026. Registration for current families, previous families and La Plata United Methodist Church families will open on Monday, January 12, 2026.

## Dates to Remember

- **January 1, 2025**  
Monthly tuition due  
**HAPPY NEW YEAR!!**
- **January 5, 2026**  
School resumes
- **January 12, 2026**  
Registration for 2026/2027 school year begins for current and previous families
- **January 19, 2026**  
No School— MLK holiday
- **January 26, 2026**  
No School—CCPS Semester Break





## WHEN YOUR CHILD IS ILL

We know it is not practical or realistic to expect parents to keep children home every time they have a runny nose, but there are times, when children should stay at home. Children suffering from fever, vomiting, or diarrhea should be symptom-free for 24 hours without medication before returning to school.

See the Family Handbook for more detailed information.



### Baby, It's Cold Outside!

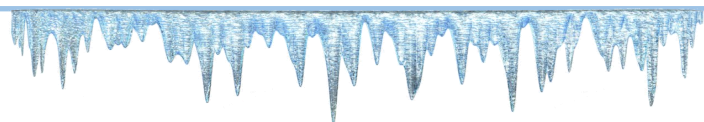
We go outside to play everyday unless it is below 32° or inclement weather. Please have your child dressed appropriately in comfortable clothes and a **winter** coat. Don't forget those warm hats and **mitten**s to keep heads, ears and fingers nice and toasty warm. And please remember that the predicted high temperature for the day has NOT been reached when we go out, it is usually 10-15 degrees cooler!



### *Looking for something active to do inside, while it is cold outside?*

Google the following on YouTube:

- Gingerbread Man Chase <https://youtu.be/ulrQy66hQ-Y>
- Yoga Freeze Dance: Winter Edition <https://youtu.be/nrOTtVhog0>
- Ski Chase or Winter Chase: google PE Universe



Pure Play Every Day, Inc. was born out of a desire by its founders and board members to stand in the gap and give children the kind of play opportunities they need. It is their mission **to inspire** all those who care about children—and the type of adult they will become—**to give children time, space, and materials to play.**

Pure Play Every Day now has a STEAM Room located at 3455 Rockefeller Court, Unit B in Waldorf, that is open for play M-F from 10am—5pm and is available for groups too!