

Rabbit Anti-Synaptophysin [EP158]: RM0181, RM0181RTU7

Intended Use: For Research Use Only

Description: Synaptophysin is a major integral transmembrane glycoprotein of synaptic vesicles with four transmembrane domains. This protein is present in almost all neurons and neuroendocrine cells throughout the body. An antibody to Synaptophysin is useful for the identification of tumors with neural and neuroendocrine differentiation.

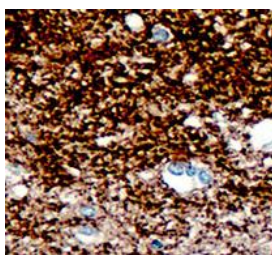
Specifications

Clone: EP158
 Source: Rabbit
 Isotype: IgG
 Reactivity: Human
 Localization: Cytoplasm
 Formulation: Tissue culture supernatant in PBS pH7.5, containing BSA and < 0.09% sodium azide (NaN3)
 Storage: Store at 2°- 8°C
 Applications: IHC
 Package:

Description	Catalog No.	Size
Synaptophysin Concentrated	RM0181	1 ml
Synaptophysin Prediluted	RM0181RTU7	7 ml

IHC Procedure

Positive Control Tissue: Pancreas, neuroendocrine tumor
 Concentrated Dilution: 50-200
 Pretreatment: Citrate pH6.0 or EDTA pH8.0, 15 minutes using Pressure Cooker, or 30-60 minutes using water bath at 95°-99°C
 Incubation Time and Temp: 30-60 minutes @ RT
 Detection: Refer to the detection system manual
 * Result should be confirmed by an established diagnostic procedure.



FFPE human brain stained with anti-Synaptophysin using DAB

References:

1. Axonal plasticity underpins the functional recovery following surgical decompression in a rat model of cervical spondylotic myelopathy. Dhillon RS, et al. Acta Neuropathol Commun 4:89, 2016.
2. Synergistically acting agonists and antagonists of G protein-coupled receptors prevent photoreceptor cell degeneration. Chen Y, et al. Sci Signal 9:ra74, 2016.
3. The BRAF kinase domain promotes the development of gliomas in vivo. Shin CH, et al. Genes Cancer 6:9-18, 2015.
4. A nonfunctional neuroendocrine tumor of the pancreas - a case report. Mogoanta SS, et al. Rom J Morphol Embryol 56:511-9, 2015.

Doc. 100-RM0181
Rev. A