

March 2021

www.nmra-scwd.org

Volume 52 No. 6

Super's Report

Phil Hottmann
Division Superintendent

I really enjoyed Ken Hojnacki's presentation on the Badger at last month's meeting. I have never taken this trip, but it needs to be put on my bucket list. I think if we can travel safely this summer, I would like to plan a trip across the lake up the western shore of Lake Michigan and the North shore of Lake Superior. There should be several railroad related activities we could plan along the way.

With the cold weather we have had recently it may have been a good thing that we didn't have our Train Show this year. I'm sure we all are looking forward to next season and attending the show again.

We didn't have a layout tour at our last meeting, but Tom Morrison presented a fantastic video called the "Sundance Central". This was most likely the best detailed layout I have ever seen. Some of the weathering was just incredible. Thanks to Tom for the impromptu presentation. Art Dawson also presented the initial plans for his new layout. I liked the interaction we had during this meeting and I would like to see more of this in the future. If there is something anyone would like to present, we can try to add it to our meeting agenda.

We are planning another Happy Hour on February 26th. I would like to see some more people join in. Get your cocktail and bring some stories.

Phil



Next SCWD Meet

March 7, 2021 at 1:00 pm
ZOOM Meeting

Contest: Page 2

Next BOD Meeting:

March 8, 2021 at 7:00 pm
ZOOM Meeting



Clinic Corner

Mike Vivion, Clinic Chair

Many of you will remember that we had originally scheduled for our December 6th Zoom meeting David Popp, of the *Model Railroader Video Plus* on-line show presented by Kalmbach Publishing, to present a clinic on the N scale Canadian Canyons Layout Project which was built and presented in 2018 in a series of at least 15 MRVP shows, and also published in the January 2019 *Model Railroader*. At the last minute, we substituted David's clinic on the "MR&T", the *Model Railroader* layout at Kalmbach, as this was a unique opportunity for us to experience the "world premiere" of this new clinic. I am pleased to inform you that David will join us again on March 7th to present his clinic on the Canadian Canyons project, including a video which covers the entire development of this layout. David will also be available on-line to answer questions. If you are an MRVP subscriber, as I am, this will be your opportunity to ask David your specific questions about the project. Even if you do not model in N scale, I think you will pick up some valuable ideas for working on your own layout or planning a new layout. I hope you will set a reminder in your calendar to join us on Sunday, March 7th, to enjoy this clinic with us.

Thanks again to Ken Hojnacki for his excellent clinic presented at our February meeting.

Mike

Contest Column

Dave Down, Chair

At long last the on-line photo contest seems to be working correctly. Members can log in as guest or register an account. As it is set up you should not be able to see who votes for which picture. Logging in as a guest is the easiest but registering makes it possible for me to see who voted. I prefer that so I can make sure only votes by members will be counted.

<https://pollunit.com/polls/3fxsousi6wdh58ls0vzesw>
(copy and paste into your browser)

There are six categories in the pictures submitted.

- MA - model motive power
- MB - model structure
- PA - prototype motive power
- PB - prototype structure
- PC - prototype non-revenue
- PD - prototype rolling stock

When you enter the site the following steps should be followed:

1. Just above the pictures on the right hand side is a sort option. Select sort by Title. This groups the pictures in each category near each other.

2. Below each picture there are two boxes. The box on the left has a black dot, the box on the right is blank and shows a check mark if you pass the cursor over it. When you select a picture as your choice for the category, click on the box with the check mark. If you change your mind you can click on the box with the dot in it to remove the checked box. Select only one photo in each category.

3. When you are finished, close the site.

If you go back to the site your votes will be visible, but not any others.

Winners will be acknowledged at the March meeting.

Dave

Layout Tours

Phil Hottmann

As mentioned in the Super's Report, we did not have a virtual layout tour for the February meeting. I'm still piecing together the tour for the March meeting. Hopefully it will be a live presentation. If not, we can present a video again.

I still have an opening for the April meeting. If you would like to present your own layout here's an opportunity, just let me know if you're interested.

Phil



**Enjoy receiving
interesting rail photos,
model railroad tips and
challenging
Mystery Photos??**

Join The 96+ SCWD members and members from other Midwest Regional Divisions who are participating in the SCWD listserv. You can expect 5 - 10 photos of railfan photos or model railroad photos or other items per week on average, as well as SCWD announcements, monthly Mystery Photo contests, Modelers Corner, and OPS Corner Puzzles. The listserv has been running this since April 2012, and it has been quite popular.

The listserv is a one-way email broadcast to you, not a social media type service. The emails are sent in bulk, but as a BCC: type email.

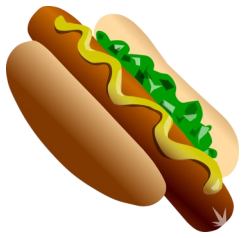
Please save this email so you know how to get a hold of me. So, if you would like to try out this FREE member service, just send me your **Name** and **email address**, and **City/State** to the address below. You may drop out at any time by sending an email stating such to the same address below.

Steve Lanphear
SCWD listserv Coordinator
scwdmemberlist@frontier.com

NMRA 2021 Rails by the Bay
Join us next summer in
Santa Clara!



Visit www.nmra2021.com for initial information.



SCWD 2021 Annual Summer Picnic



As most of you know, the 2020 SCWD Summer Picnic was canceled due to the covid-19 pandemic. With encouraging words on the status of vaccine inoculations, the SCWD Board has approved proceeding with planning for 2021. For the past several years, we have held the catered picnic at Little Americka Park in Marshall on their “Whiskey River Railway Day”. We will do so again this summer on July 17th with the caveat that Federal, State and local health directives allow us to do so. Masks except when eating may be required.

Reservations have been made with the amusement park for use of their Blue Rose Pavilion and with HyVee for catering the event. The park opens at noon and closes at 6 pm. Lunch will be served starting at 12.30 pm. Entrance to the Park, parking and use of the pavilion are free. Also, the Board has decided to cover all the cost of the lunch this year. Railway equipment can be viewed for free, but train and other rides require purchased tickets from the Park. SCWD members, their direct families and other Division invited guests can attend the picnic. To determine the food quantities for the caterer, you will have to sign up by Saturday, June 19th.

Little Americka is located on STH 19 on the east edge of Marshall. Parking directly at the Blue Rose Pavilion can be reached off Box Elder Rd. intersecting USH 19 east of the Park regular entrance.

SCWD 2021 Annual Picnic Sign-up Sheet

FUN!

SCWD Member and family attendee(s) names:

Please print and fill out the form above and return by June 19th to:

John Haverberg, 4797 Delmara Rd, Middleton, WI 53562



Midwest Region Election Results

The winners of the election:

Congratulations

For President:
Bob McGeever

South Central Wisconsin Division

For Vice President:
Michael Hirvela

Fox Valley Division

For Director-at-Large:
Jim Landwehr
John Coy
Jerry Peterson

Fox Valley Division
Central Indiana Division
Michiana Division

Other SCWD Members that serve or did serve on the MWR Board:

Keith Thomsen serves on the MWR BOD as the Treasurer
Phil Hottmann is on the MWR BOD because he is a Division Superintendent
Paul Mangan will be replaced as the Past President by Steve Studley

Thanks to all that voted!

*Online e-ballots
significantly increased
participation*

A Puzzle for You

You like trains, or train watching, but have you ever wanted to go to an OPS (Operating Session) and run trains on someone else's layout, but were afraid you wouldn't know what to do?



Model Railroad Operation is a fun and interesting role-playing game where the players (operators) use model trains to simulate the movements of the prototype railroad. Operators fill the roles of railroad employees like engineers, conductors, yardmasters, dispatchers, and more. Many of our SCWD members participate each month at multiple layouts to enjoy this fun and stimulating practice of critical thinking and problem solving in the context of railroad operations.

Now, there is a way for you to get your feet wet in this critical thinking and problem-solving railroad environment in the privacy of your own home through the use of railroad switching puzzles.

In July, a group of SCWD members started a project to introduce more of our members to the enjoyment of

railroad operations, or as our wives call it, playing trains. Some of us have been engaged in operating sessions for 20 years or more, and would like to get more of you involved.

The project involves getting one to solve a series of train switching puzzles (on paper, or your computer) in the least number of moves possible. You can then submit your solution to see if yours was done in the least number of moves.

Beginners can start with **3 introductory puzzles** to show the kinds of skills used in railroad switching operations. Then, you can advance to a series of more advanced puzzles written and based on actual SCWD member area layouts. Or, if you have already been to an OPS session, you could do an introductory puzzle, and jump right into the more challenging ones.

Join the SCWD listserv now and begin learning what this is all about!

Email Steve Lanphear at scwdmemberlist@frontier.com to be added to the list and start receiving your puzzles now!

Happy Railroading!
Steve

Presidential Trains

By Jim Feldman

The history of U. S. presidents and trains is thick with irony and scraps of railroad history.

The first U. S. president to ride a train-and probably the first to even see one- was Andrew Jackson who in June 1833 rode the B&O from Ellicott's Mills Maryland to Baltimore.



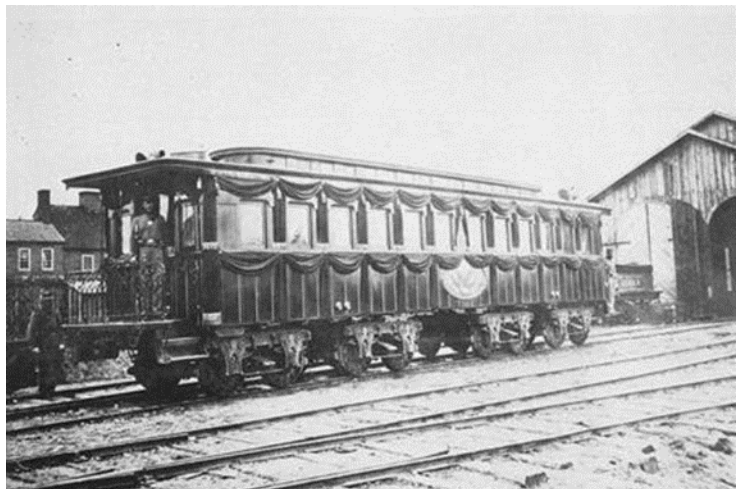
Andrew Jackson at Baltimore in 1833

The next known use of a railroad train by a U. S. President was William Henry Harrison. In 1841, as President-elect, Harrison used a train to ride to his inauguration at which he caught pneumonia and died a month later,

President Abraham Lincoln signed the bill authorizing the construction of the transcontinental railroad. As the Civil War came to a close in 1865, the U.S. Military Railroad department saw a need for a train that would allow the president to travel throughout the country to emphasize a new sense of normality and unity. The train car with a luxury steam engine was built by 1865. It was called "The United States". Lincoln himself objected to the cost and ostentatious spending at a time when the nation was reeling in debt. Lincoln never rode the train during his lifetime, in fact never even saw it. It was the first private rail car in America.

After his assassination in April of 1865, the U.S. Military Railroad quickly retrofitted the United States as a funeral coach. The single car was even more extravagant than Lincoln could have dreamed. It featured leather-bound walls, huge heavy furniture, decorative rosettes sewn into the ceiling. It had a bedroom and a bathroom.

The United States presidential car in 1865

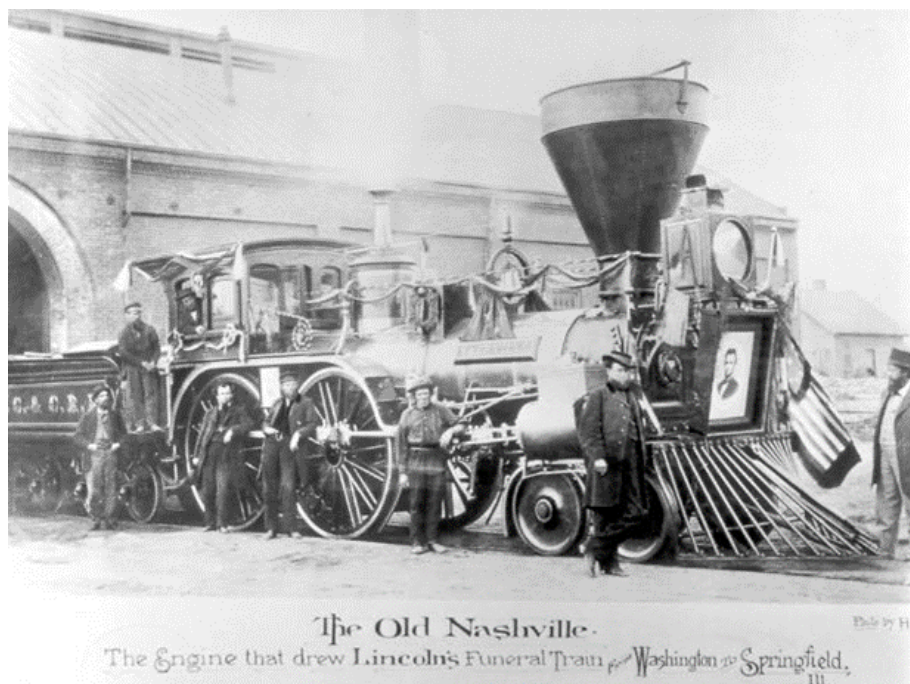


On April 21, 1865, a train consisting of a locomotive, eight passenger coaches, and the United States funeral car carrying the coffin of President Lincoln left Washington, D.C. on its way to Springfield, Illinois, where he would be buried on May 4. The trip covered 1655 miles through 180 cities in seven states. A portrait of Lincoln was fastened to the locomotive above the cowcatcher. Also onboard was the coffin of Lincoln's 11-year-old son Willie who had died of typhoid in 1862.

At each stop, Lincoln's coffin was taken off the train, placed on an elaborately decorated horse-drawn hearse and led by solemn processions to a public building for viewing. In cities as large as Columbus, Ohio, and as small as Herkimer, New York, thousands of mourners flocked to pay tribute to the slain president. In Philadelphia, Lincoln's body lay in state on in the east wing of Independence Hall, the same site where the Declaration of Independence was signed. Newspapers reported that people had to wait more than five hours to pass by the president's coffin in some cities.

The United States funeral coach was destroyed in 1911, in a prairie fire near Minneapolis, Minnesota. At least one re-creation is in a private collection.

The Lincoln funeral train was pulled by as many as twenty different locomotives. Typical of them was The "Old Nashville" a 4-4-0 "American Standard" steam locomotive built by the Cuyahoga Steam Furnace Company in August of 1851.



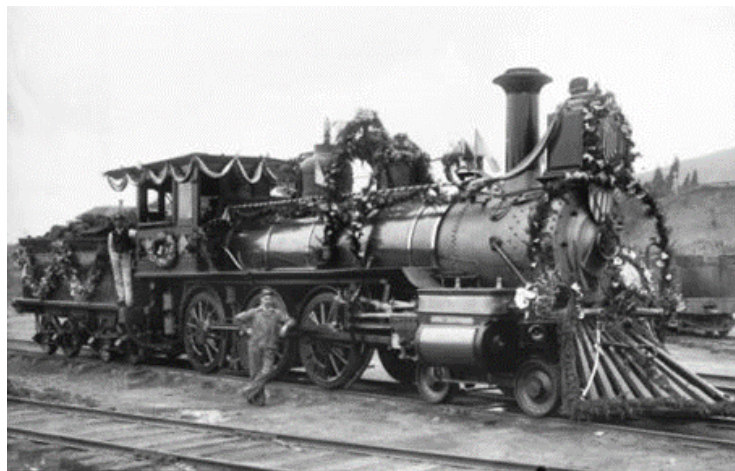
On April 29, 1865, this locomotive pulled Abraham Lincoln's funeral train from Cleveland to Columbus and part of the way through Ohio.

After that, trains became the favored transportation of candidates and presidents alike.

In 1891 Benjamin Harrison travelled more than 10,000 miles on the first "whistle stop" tour of the country. This campaign introduced the acronym 'POTUS' to identify Harrison's many trains.

Like Harrison's, all presidential trains commanded absolute right of way. Railroad police and plainclothes officers scoured every foot of track and station. Track gangs scoured the route for broken rails or other defects. All other traffic was kept at least thirty minutes ahead or behind the presidential train.

Benjamin Harrison's locomotive 1891



The 1896 presidential campaign between William McKinley and William Jennings Bryan was the first conducted by rail. Bryan logged 10,000 miles and gave 3,000 speeches.

Theodore Roosevelt was the first president to use an entire train dedicated to campaign staff. He used the train to 673 speeches while traveling more than 21,000 miles. True to his reputation for adventure, Roosevelt often traveled in the locomotive cab. Unlike many presidents who used cab rides as publicity stunts, Roosevelt learned how to actually operate a locomotive pulling a heavy freight load. He served as president from 1901-1909.

William Taft traveled more than 100,000 miles by rail during his 1909-1913 term, reaching every continental U.S. state except North Dakota.

Woodrow Wilson in 1916 became the first sitting president to actively campaign for re-election, traveling more than 34,000 rail miles. In 1919, Wilson used a 10,000-mile train trip to convince the nation to support America's entry into the League of Nations over the objections of Congress.

The all-time champion POTUS of railroads was Franklin D. Roosevelt. The quarter million miles he logged on the rails was spent mostly in the custom car called U. S. Car No. 1. It was built by the Pullman Company in 1928 and originally called The Ferdinand Magellan. Car 1 was bought by the government in 1941 and retrofitted as a rolling fortress for Roosevelt. It was the heaviest rail car ever built in the U. S. at 285,000 pounds. It had plate armor 5/8" thick and three-inch bulletproof glass, escape hatches, four bedrooms (including separate rooms for Franklin and Eleanor), air conditioning, two bathrooms, a telephone in every room. One can only imagine what Lincoln might have thought about that display.



Magellan 1940s

Roosevelts on Car No. 1 1937



Car No. 1 was used by several presidents after Roosevelt.

Harry Truman used it extensively in his campaign for his second term. This famous picture was taken on the back platform of the Magellan.



President Truman was the last president to make extensive use of Car. No. 1.

Dwight Eisenhower was the last president to make regular use of train travel. One of the main reasons was because his wife, Mamie, hated to fly. During his 1952 campaign, Eisenhower traveled more than 51,000 miles, making 232 stops. Many of those miles were by air for Dwight, but Mamie stayed on the train the entire time.

Ronald Reagan revived it in 1984 for a series of whistle-stop visits in a five-day trip. This was the last presidential use of the Magellan, which lives out its retirement in a museum in Miami.

Presidents Jimmy Carter, H.W. Bush, Bill Clinton, and Barack Obama all used the same historic train car, the gorgeous, deep-blue Georgia 300, for high-publicity trips. Obama has actually used it multiple times, most famously to retrace Lincoln's inaugural route as a major source of symbolism for his own inauguration in 2009.

Air travel with its higher speed easier security and advanced image had started in 1943 with Roosevelt the first president to fly. It has become the standard method of travel for all modern presidents. A few remnants of POTUS rail travel are scattered around the country in museums and private collections.



Churchill and Eisenhower on Car No. 1 1941



The Ferdinand Magellan after retirement

Jim Feldman, SCWD Member

SCWD listserv starts a new idea for “stuck at home” model railroaders

“I know that these are difficult times for all of us, but if we could pull together as model railroaders and share what we have been working on in our basement train rooms now that we have more time, perhaps we can all get some inspiration from our fellow SCWD members” said Steve Lanphear who manages the SCWD listserv.

I proposed a **Modelers Corner**, where we could post photos of work in progress or work completed on your layouts. I figured that since we aren't having photo and modeling contests, clinics or layout visits, maybe we could share progress or ideas that we are working on.

Here's how it could work: you send me a photo along with a brief description and I post it on the listserv for all to see. If you would like feedback from the group, let me know and I will include your email in the post, but that is **optional**. That way if one of you has a question they can contact you directly.

And from that day on March 29 to the present, we have had upwards of 140 posts from our modelers. We hope to continue this for as long as it is of interest to our members.

Steve Lanphear
SCWD listserv Coordinator
scwdmemberlist@frontier.com



SCWD Members,

Since the SCWD will not be holding division meetings for the foreseeable future, the 2021 election for the Board of Directors will have to be conducted on line. We will use the same process we used for the 2020 election.

You will find the ballot on our web page at <https://www.nmra-scwd.org/bod-vote.html>. Only vote for 4 of the 7 candidates. The voting will commence on March 8th and conclude on April 8th. The results will be announced at the April 11th Division Zoom meeting.

You must fill out the form with your name and NMRA membership number. You must be a member in good standing with the NMRA and a member of the South Central Wisconsin Division to vote in this election.

Your vote will remain anonymous as I am the only one who will see the ballots. Believe me, memory is just not good enough these days for me to remember who you all voted for. All the ballots will be deleted as soon as I tabulate the votes and announce the results.

Bob McGeever
SCWD Elections Chair

Candidates in alphabetical order:

Dr. Bill Clancy

Although I didn't have a Lionel nor an American Flyer train, I found myself at age 12 a very enthusiastic builder of Strombecker wooden HO rail cars. Unfortunately, I had to put my enthusiasm on hold for many years. Sports took up all of my free time both in high school and college as I had an athletic scholarship that was year round. Then came med school and orthopedic residency. After serving my two-year draft obligation as Chief of Orthopedic Surgery and Head Team physician for the United States Naval Academy, I accepted the position at the UW as Head Team physician and orthopedic surgeon for all the UW teams and started the UW Hospital Sports Medicine program. I became a member of the SCWD in 1977 but had little time to be active because of my weekend team coverage and Sunday athletic clinic.



In 1989 I moved to Birmingham, Alabama to develop

the Alabama Sports Medicine Clinic and with a little more time on hand, I built two large HO layouts.

In 2010 at the request of the UW, I returned again as Chair of Sports Medicine and Head Team physician for UW athletics. In 2014, I retired and became active again with the SCWD. I have been chairman of the Rail School for the past two years and co-chairman of the train show layout awards committee and now am one of the Clinics co-chairman. I have served on the Board of Directors for 6 years and I am still very enthusiastic about providing our division with as much upgraded knowledge as possible. The board members over my past few years have been great and they continue to push us forward. I would like to continue with them.

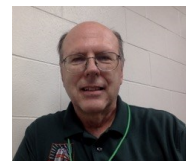
David Dingman



With retirement starting to become a light at the end of the tunnel and another weekend spent at the Mad City Model Railroad Show, I decided to join the NMRA and SCWD in the spring of 2016 to become more actively involved in model railroading again. I have participated in the Mad City Model Railroad Show as a volunteer for the last several years to become better acquainted with the members of the SCWD and also help support the division. I was recently honored by being asked about becoming a member of the SCWD Board of Directors.

My first memories of trains involve watching prototype trains maneuver around the Los Angeles area then riding on an ATSF passenger train to San Diego and back. I remember being thrilled to see a real operating steam locomotive and train up close at Disneyland when I was 7 years old. A short time later my father acquired a friend's model railroad layout (12' x 16') that had both O and HO scale track and trains running at the same time. That instilled a lifelong love of both model and prototype railroading. Interest in model railroading survived a very challenging test during the next forty plus years as college, multiple moves and work all limited participation to reading Model Railroader magazine and going to model railroad shows.

Dave Down



Hello SCWD members. My name is Dave Down and I am running for re-election to our Division's Board of Directors. I have been interested in model railroading starting with my first train when I was 8 years old. I had a large American Flyer set which was big enough to run around both our living room and parlor. My father also introduced me to HO trains when I was 12 when he gave me a refrigerator car (which I still have). While I was in college my parents moved and had an auction, which was the last time I saw the American Flyer. After that time I was

pretty much a closet model railroader until I approached retirement.

During the next 45 years I read magazines, acquired some engines and cars, and started work on a couple different layouts. Work took me on the road and gave me too many chances to procrastinate, so when I approached retirement I set a goal of becoming a model railroader for real. I decided to become a member of the SCWD in the fall of 2015 with the goal of meeting and getting to know people who have already had success in the hobby, and to find which aspect of the hobby will give me the most satisfaction. As a result, I have acquired a model railroad layout based on the Soo Line (Bill Ehler's Rugby Junction) and hope to have it ready soon for visits, virtual or in person, as the pandemic allows.

It seems obvious to me the SCWD can only be successful in building the hobby when it is effective in helping modelers develop their skills and expand their interests. And it also seems obvious to me the SCWD will only grow and achieve success when its members use their abilities and skills to make the SCWD relevant to its members. I am running for the Board of Directors in an effort to give back to the organization and the hobby. My goal is to encourage others to get involved and to make SCWD an attractive organization to current, new, and future members.

Phil Hottmann

I have been a model railroader for 28 years. Most recently I have served on the SCWD B.O.D as Superintendent and have also been organizing our layout tours.



My focus in the hobby has been on highly detailed and weathered structures. I find this hobby to be extremely interesting and challenging. With recent developments in digital technologies, we have seen a new level of realism. This has also reduced the amount of effort required and has created a real boost to the hobby.

I have enjoyed attending the SCWD meetings and have often been amazed at all of the information provided by the members and for the members. I would like to see the division continue to grow and develop and serve on the Board for another term.

John Kosobucki

As is often the story in model railroading, I was introduced to trains by my parents at Christmas time when I was 7 years old. The Lionel freight train set I received then is still operational, and occupies a 4 x 8 space in the basement along with a few accessories, scenery, and some upgrades. I was



introduced to model railroad operations by the late Hank Brown when I was investigating a burglary to one of his properties, and he invited me to see his layout and become one of the regular operating crew. I became an NMRA, and SCWD member in 1997.

We have some truly talented members of the SCWD, and I am utterly amazed at the detail and workmanship so many of them have accomplished on their layouts. I have been honored to operate on several of these layouts that belong to the best modelers I know.

Outside of the hobby, my professional life included 8 years as a journal clerk for the Wisconsin State Senate; 20 years as a deputy and sergeant for the Dane County Sheriff's Office; and 11 years as the site administrator for a national phone company that contracted with the Dane County Jail for inmate phone service.

As many of you have, I too have volunteered for many years at the SCWD Annual Train Show in Madison. It is great that so many of you have answered the call to make this annual event the success that it is. However, there is so much more that goes on behind the scenes for months and months leading up to this two-day event. Your SCWD BOD plays a significant role in making all of this happen.

I was honored when asked to throw my hat into the ring to run for a position on the SCWD Board of Directors. As the new guy, I know there will be a lot to learn, but I want to serve you, the members of the SCWD, and would be honored to have your vote.

Bill Mitchell

I have been always interested in electric trains. We would go to Madison to SEARS on East Washington Avenue to do our Christmas shopping. In one of the aisles near the tool section was SEARS themed 3 rail train set up. I received a Marx clockwork train from an aunt for my birthday. My Mom finally hid it one day because I was not strong enough at the time to wind the clockwork mechanism on the locomotive. I had been exposed to the MODEL RAILROAD magazine at the public library when I started attending school in New Lisbon. Around the age of 7 my uncle gave me his old American Flyer train set when he went off to college. S gauge was a bit big. My first TYCO HO train came from the JC Penney Christmas toy catalog (with JC Penney white box car). I set it up on a 4 x 8 sheet of plywood up in my attic bedroom. Two turnouts and some additional track sections were added when I had saved up enough from picking rock for the farmer next door.



When I was around 14, I became a member of the National Model Railroad Association but did not know

that the South Central Wisconsin Division existed. In 1976. I attended my first SCWD February train show at Edgewood College. Fast forward to when the SCWD had moved to the Alliant Energy Exposition Center just after moving to the Madison area for my first job out of college. I was contacted by a Tom Fleury from the SCWD to consider "watching" the wooden toy train layout room when the SCWD had received some wooden toy trains for the children. With my son in Cub Scouts, this was a way to see the show for FREE and check out the show. I became a LIFE member of the NMRA in 1988.

Paul Mangan, Train Show Volunteer Coordinator, continued to ask (and I accepted) to volunteer at the February shows Wooden Toy Train Room with my Cub Scouts and my Boy Scouts. When a vacancy occurred on the SCWD board, I contacted Bob McGeever to express the interest in the Clerk position. I was appointed to fill the empty position and then was elected to the board in the next Spring election. I enjoy being a member of the SCWD board and would like to be re-elected for the next year. I would be like to continue as a member of the Board of Directors in the position of Clerk.

Steve Preston



Like all kids, I got interested in trains when I was a young lad. I got my first set at 7 years old but it was a short lived love affair since it came to a sad end about 8 months later. Well at the ripe old age of 42, I found my first new set. It was a "MOPAR" Lionel set of a limited edition. I soon grew from there. I wanted to know more about building and modeling and that's when I came to my first train show. I found one of the SCWD's membership forms, and I joined about 6 years ago – well the rest is history.

I would like to run for the board, not only to see what goes on behind the scenes, but to hopefully bring in some fresh ideas. From there I might get a better understanding of how things work, but also to help me grow possibly in our organization. Thank you for your support.





**Minutes SCWD Board Meeting
7:00 pm, January 11, 2021
via Zoom meeting**



The meeting of the South Central Wisconsin Division Board of Directors was called to order at 7:01 pm by Superintendent Phil Hottmann. Phil Hottmann, Bob McGeever, Dr. Bill Clancy, David Down, Dave Dingman, Steve Preston, and Bill Mitchell were present. Jim Feldman was unable to attend. John Haverberg was also in attendance to present an update on the July SCWD picnic.

Minutes:

Motion by Dr. Clancy, second by Dingman, to approve the minutes of the December 14th, 2020 meeting. Motion carried.

Paymaster Report

Bob McGeever stated that there was very little activity in the accounts. The **OLD NATIONAL BANK** checking account is officially closed. Motion by Dr. Clancy, second by Dingman, to approve the Paymaster Reports. Motion carried.

Committee Reports:

Picnic

John Haverberg contacted the people at **Little Amerika** in Marshall on December 15 to reserve the Blue Rose Picnic Pavilion for our SCWD July Summer Family Picnic to coincide with "Whiskey River Days" on Saturday, July 17th. So far, John has not received a response from **Little Americka**. John will also start gathering catering information from **HY-VEE**. **HY-VEE** has been catering our Spring banquet and the picnic for a number of years. Discussion included the recommendation that all members and guest have completed the COVID-19 vaccination protocols at least 2 weeks before Saturday, July 17th. **HY-VEE** does not need a count on attendees until the middle of June. The possibility exists that a cover charge for attendees and their guests may be required to help pay for the meal. Dane County COVID-19 protocols will still be in place. More details will be presented to the membership as July gets closer.

Achievement Program - no updates

Advertising - no updates

Awards - no updates

Bad Order

The January "**BAD ORDER**" newsletter is published on the SCWD website. *Special Note: Kathy, our newsletter editor, is always in need of articles. Please submit articles by the 14th of the month to SCWDKATHY@AOL.com via email attachments.*

Clinics

The **50th SCWD Anniversary** presentation from a few years ago was presented at the ZOOM January 10 Membership Meeting to replace the January Rail School which had been canceled. Technical ZOOM difficulties were efficiently corrected. February clinics for the membership meeting are scheduled. More clinics need to be lined up for the coming monthly meetings.

Contests - Model and Photography

The **PHOTOGRAPHY Only** contest coordinator has encountered some technical difficulties with getting the images posted to the website. Picture submissions are coming in at a very slow rate. Reminder, JPEG image files are needed. Also, comments are needed for the submitted images: maybe location, date, and person submitting the

images. Please check out the **"Bad Order"** for information on the submission process.

Modeling Project - (Paused until the next "Live" Monthly Meeting)

Door Prizes at the Monthly Meeting

Because January is usually the Rail School, door prizes were not given out for the January meeting.

Layout Tours - (REMINDER - A NEW CHAIRMAN IS NEEDED)

Phil Hottmann is in the process of lining up layout tours for the rest of the year. The SCWD is always looking for more people to host virtual layout tours.

Membership

Steve Preston is keeping the membership roster current. The action of removing inactive members from the roster will be decided at the April SCWD Board of Directors meeting. We know that some of our members are experiencing difficulties due to the COVID-19 pandemic. We are encouraging all our members to keep their membership current. ***Please renew your membership as soon as possible to keep your continuous membership in good standing.***

Publicity - no updates

Rail School

The January monthly membership meeting was held instead of the traditional January rail school. We are looking forward to the January 2022 rail school event.

Rail Show

The SCWD website has been updated for the February 2021 show as being canceled. Website viewers are now being invited to attend our rail show on February 19th and 20th, 2022.

Website

The www.nmra-scwd.org website is looking good! It is "quietly" available. The need for a "Social Media Coordinator" is discussed in New Business below.

Old Business:

The commission sales of Company Store items at the **Hobby Stop** is working. A possible list of **LIONEL** items from the Company Store will be created in the future for possible consignment sales at a hobby shop specializing in **LIONEL** items in Butler.

Happy Hour Schedule: The next SCWD "ZOOM" Happy Hour event will be January 15th at 5:00 pm. An email announcement will be sent out.

New Business:

Social Media - REMINDER - There is Still Need a Chairman / Co- Chairmen

Without our physical presence in the Model Railroading hobby, a need exists to put information about the hobby and our Division out on the internet. "Facebook" could become a very good platform to get information out to the world. The Board of Directors are looking for some members who have a good understanding of "social media" including Facebook to become the SCWD Social Media Chairman. Anyone interested should contact Superintendent Phil Hottmann or another member of the Board of Directors.

Joint Train Show with WISE Division

The Wisconsin Southeast Division of the National Model Railroad Association has reached out the one or two of our

SCWD Board Members to enter into discussions about having a joint train show in the future. Topics discussed at this Board Meeting included the ideas of a common facility close to Madison and Milwaukee, alternate years for SCWD and WISE train shows, pooling administrative efforts for distinct shows, discounts on expense items provided by one supplier for both shows to reduce costs, and the costs and profits associated with possible joint shows. The Board decided that more information is needed from the WISE Division because at this time our SCWD discussions were just ideas without any laid out objectives provided by the WISE Division.

Support of Small Businesses:

Please support our local hobby shops which are continuing to be affected by the State of Wisconsin and Dane County COVID-19 rules. Many of us are now getting back to working on our layouts and do need supplies. Most hobby shops are now open with possible new business hours and occupancy limits. These hobby shops offer gift certificates or gift cards for later purchases. Call ahead for store hours and guidelines for each hobby shop.

Adjournment:

A motion was made by McGeever, second by Dingman, to adjourn the meeting. Motion carried. The meeting was adjourned at 7:41 pm.

Bill Mitchell - Clerk

NOTES from the Clerk:

Monthly Membership Meeting: The ZOOM meetings continue to be somewhat of a **new experience** for some of our members. Members are encouraged to participate in these monthly ZOOM membership meetings. If anyone has problems joining the meeting please contact Phil Hottmann via email or phone number listed in the **RED BOOK**. The ZOOM software needs to be "downloaded and installed" before using ZOOM the first time. Once the ZOOM software has been installed on your computer system all you have to do is "join" the meeting by "clicking" on the ZOOM link provided in the email invitation. Each member is able to "**mute**" and "**turn on/off video**" which is found on the bottom of the computer screen. During clinic and tour presentations, "**mute**" and "**turn on/off video**" will eliminate some overhead on the communications link and possibly eliminate **SCREEN FREEZE**.

LISTSERVE & Special Interest Groups - Operations: The photos, switching contests, and layout progress updates that are being sent out by Steve Lanphear are greatly appreciated.

BOD Meetings: Members of the SCWD are invited to join a Board of Directors meeting. Send a request to Phil Hottmann for a ZOOM link to the upcoming meeting. Phil's contact information is in the REDBOOK.

The MWR Spring Convention has been postponed

The regional convention has been pushed back to September 16-19, 2021.

It will be held in Rockford.
Details to be announced.



MADISON HOBBY STOP

6622 Mineral Point Road, Madison, WI 53705

Ph: 608-829-3820 • Fax: 608-829-3852 • www.madisonhobbystop.com

Hours: Monday – Friday (10 am – 8 pm) and Saturday (10 am – 5 pm)

Model Railroading • Plastic Model Kits • Rockets & Accessories • Pine Car •
Paints • Tools & more!



**Since this winter is not going
to go away for a while,
might as well stay in and
keep running trains.**

A couple more consignment collections coming in.

Shelves are full of both new and old stock.

Sunday hours will end at the end of February.



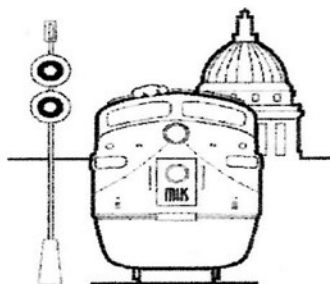
**Preorders are 25% off regular price except
Walthers Proto which is 20% off**

New/old consignment coming in weekly, stop in for best selection

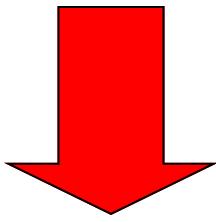
**Remember, most model railroad items are 20% off
with a valid NMRA or other club id card**

Excludes discounted or sale items, magazines, and consignments

Gift Certificates Available



Madison Hobby Stop
Chris Roosli, Proprietor



If you change your email address, don't forget to notify:
Kathy Clancy
Bad Order Editor

Changing your email address with the NMRA does not change it for Bad Order mailing.

Thank you!



ADAIR SHOPS

Weight Upgrades for Improved Model Railroad Operation



Weight upgrade kits for HO freight and passenger cars (RTR and kits)



HO steel plate and beam load kits



HO & N bridge kits

For a complete list of kits, along with additional photos and sale items, visit our website.

www.adairshops.com

Adair Shops, PO BOX 344, Dyersville, IA 52040
adairshops@yousq.net

The Hobby Depot

Brian Stackpole, owner



See us on the web at: www.hobbydepotmonroe.com



835-17th Street
Monroe, Wisconsin 53566

Phone: 608-325-5107

Call ahead to be sure we're open!

email: hobbydpo@tds.net

TRAINS & MORE

South Central Wisconsin Division of the National Model Railroad Association

Publishes eleven issues yearly of the

BAD ORDER

Official Mailing Address:

BAD ORDER

3940 Trempealeau Trail

Verona, WI 53593

Photos in the Bad Order, unless otherwise noted,
are by Kathy Clancy

Deadline for submissions: **14th of the month
prior to publication.** Email Bad
Order Editor at SCWDKATHY@AOL.com

Place your ad here!!!

Contact

Kathy Clancy

Bad Order Editor

SCWDKathy@aol.com

PLEASE PATRONIZE OUR AREA HOBBY STORES

The Hobby Depot – 835 17th Street – Monroe WI
Madison Hobby Stop – 6622 Mineral Point Rd (inside Clock Tower) – Madison WI *

* = Train Show Ticket advance sales

SCWD 2020-2021 Meeting Schedule

| Regular Meeting | BOD | PICNIC (TENTATIVE) |
|-----------------|----------------|--------------------|
| March 7, 2021 | March 8, 2021 | |
| April 11, 2021 | April 12, 2021 | |
| May 2, 2021 | May 10, 2021 | |
| | June 14, 2021 | |
| | | July 17, 2021 |

