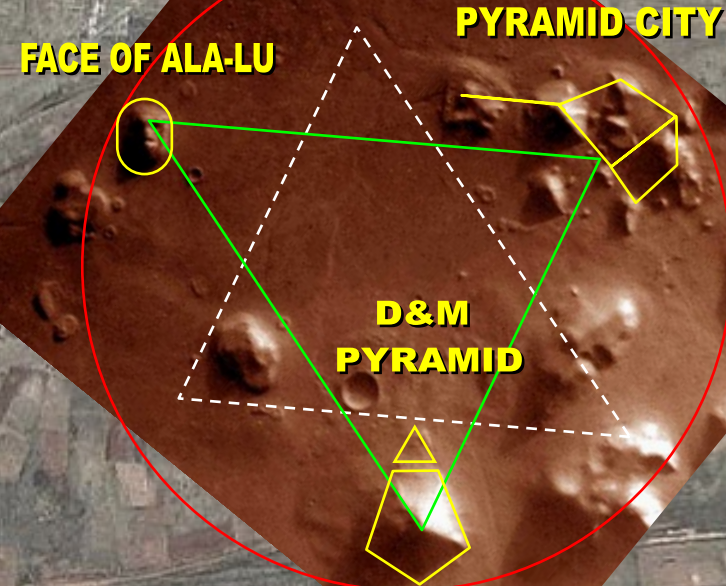


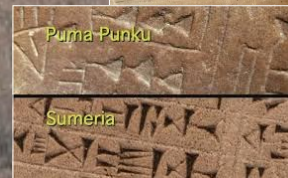
TIAHUANACO CYDONIA-ORION STAR GATES

MARTIAN MOTIF TRIANGULATION PATTERN

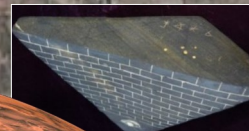
N MARTIAN MOTIF
CYDONIA, MARS
40°44'33.60N 09°27'40.29W



FUENTE MAGNA BOWL



ORION
Keeper of Silver Gate
*'The Son of the Creator
comes from here'*
La Manna, Equator



FACE OF ALA-LU



Tiwanaku Town



Puma Punku



D&M
PYRAMID

Image © 2015 CNES / Astrium

PLEIADES CITY



Gate Courtyard

Mintaka
Kalasasaya

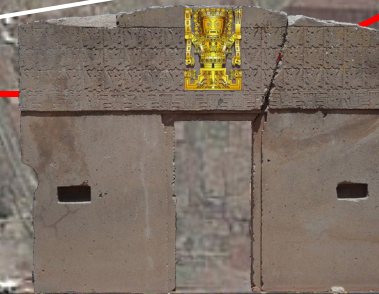
Alnilam
Putuni

Alintak
Kerikala

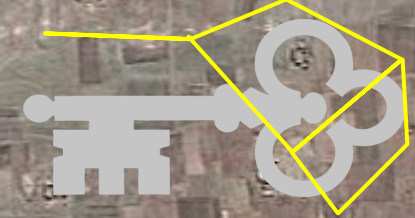
Algiebba
Acapana

Museo Nair al Saif

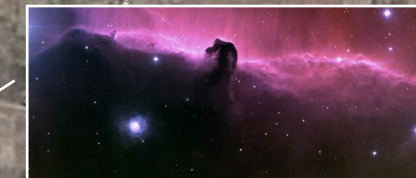
Silver Gate Keeper
'ORION'



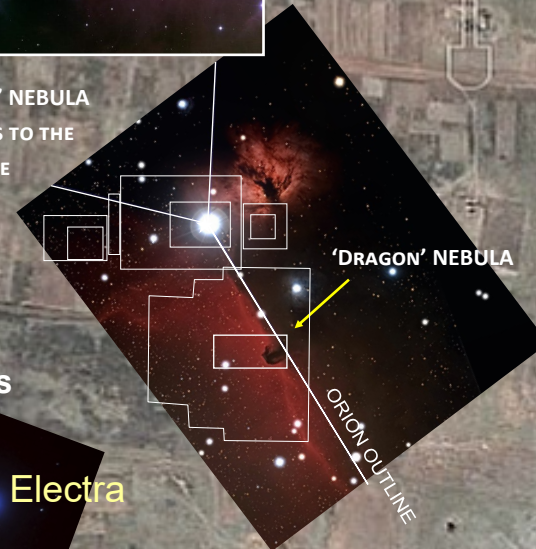
The 'KEY'



TYPOLOGY
UNION OF DUALITY
CORRESPONDENCE - HARMONY
CHRIST - BRIDE
ORION - PLEIADES
SEXUAL UNION
MALE - FEMALE
GATE KEEPER - KEY



THE 'DRAGON' NEBULA
CORRESPONDS TO THE
TEMPLE OF THE
RED DRAGON
LUCIFER
ASCRIBED



THE PLEIADES
7 DAUGHTERS OF ATLAS

Atlas
Merope
Electra
Celaene
Maia
Taygete
Asterope
ALCYONE
Pleione



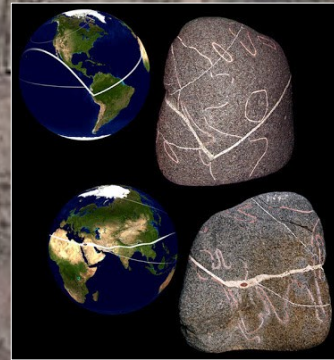
Google earth

© Composition & Some Graphics by
LUIS B. VEGA
vegapost@hotmail.com
www.PostScripts.org
FOR ILLUSTRATION PURPOSES ONLY

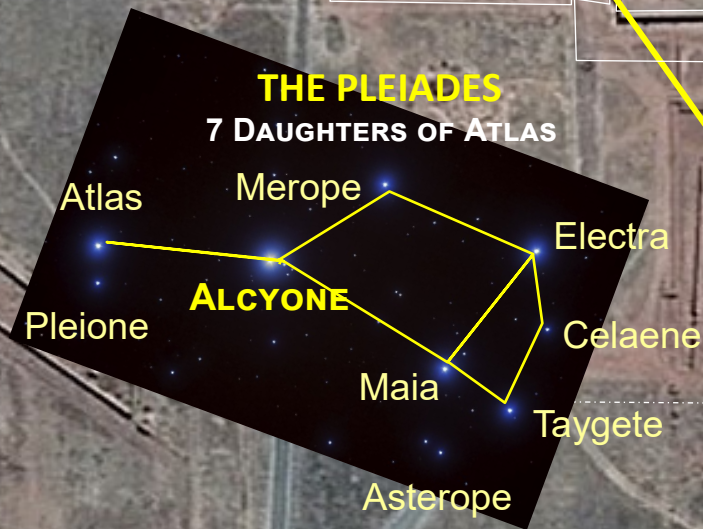
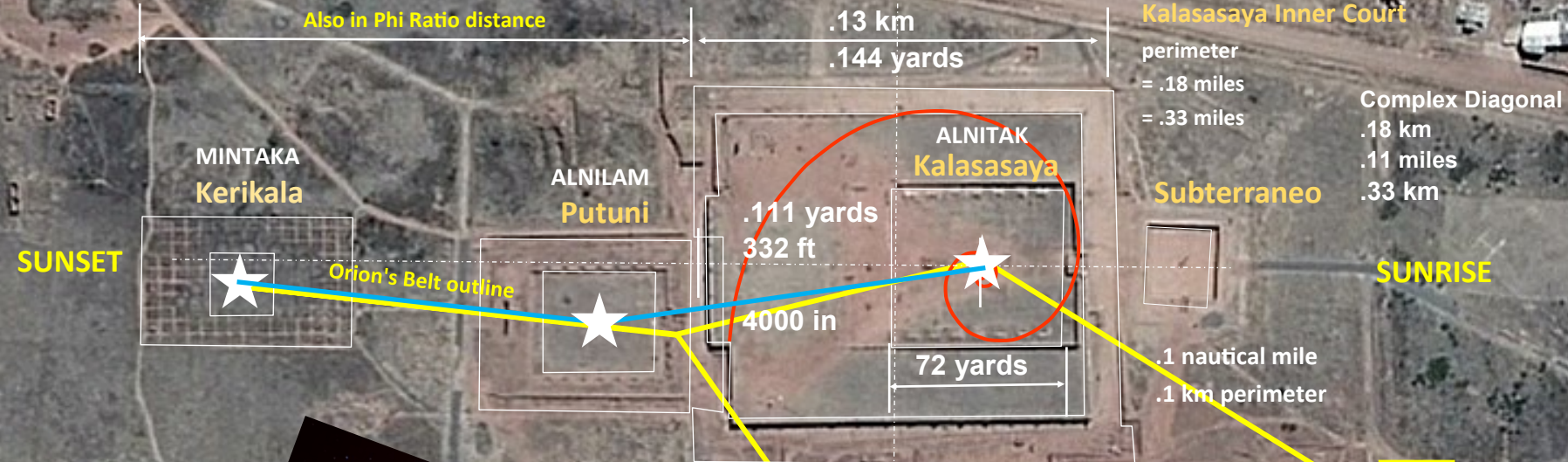
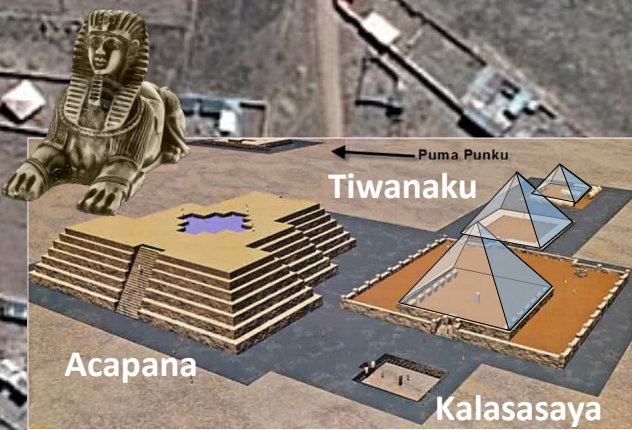
MAIN SOURCES
Earth.Google.com
ESA.ist - G. Neukum
Mars.Google.com
Wikipedia.com
PP

TIAHUANACO PLEIADES STAR MAP

ORION - GREAT PYRAMID TRIANGULATION PATTERN

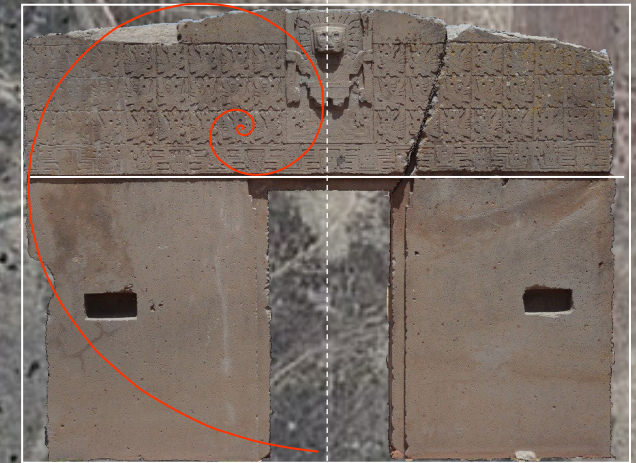


PRE-INCA
World Stone Map



THE PLEIADES IS A
KEY - STAR GATE
MOTIF

1 SOLAR YEAR



Pyramid Diagonal
.18 miles
133° heading
.33 km

360 cubits
(Lunar)

111 smoots
.1 nautical miles
.18 km (666)

365.24 cubits (Solar)



Google earth

© Composition & Some Graphics by
LUIS B. VEGA
vegapost@hotmail.com
www.PostScripts.org
FOR ILLUSTRATION PURPOSES ONLY

MAIN SOURCES
Earth Google.com
ESA list - G. Neukum
Mars Google.com
Wikipedia.com
PP

Image © 2015 CNES / Astrium

TIAHUANACO STAR GATES 3

CELESTIAL PATTERN OF ORION-PLEIADES CONSTELLATIONS

The purpose of this diagram is to show a possible celestial correlation between the Orion-Silver Gate and the Tiahuanaco pyramid region of Bolivia. The location is just south of Lake Titicaca on the Bolivian side and northwest of La Paz. The small town of Tiwanaku is usually associated with the pyramid complex that actually is divided into 2 main locals. The primary pyramid complex is called Kalasasaya. It encompasses the 3 main structures that this study strongly suggests correlates to the Orion star map and subsequently the same motif as the Great Pyramid of Giza complex in Egypt among with the Sphinx. This study suggests that the main pyramid, called Acapana correlates and functioned much like the Sphinx of Egypt in keeping astronomical and astrological time. The other primary archeological site is Puma Punku. This is an amazing site as the stones quarried and brought there from over 100s of miles have a workmanship unparalleled to any other ancient pyramid design and construction. This study suggests that in keeping with the Orion star map, Puma Punku correlates to the star Saiph. Upon further correspondences, there appears to be definite land markers to also correlate the other boundaries of the constellation Orion.

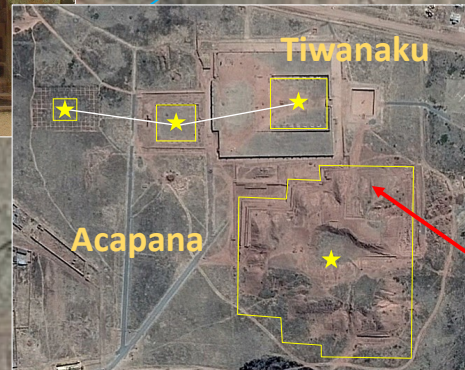
Kalasasaya



Viracocha

Orion, the Keeper of the Gate of the Gods

Tiahuanaco Complex



There is ample evidence that the most ancient civilization had direct contact with one another despite distances and oceans. One theory that has become popular in modern times is the Alien Astronaut theory that states that beings from other planets or 'suns' such as the Pleiades or Orion came to seed the race of Humanity.

Orion Constellation Template

3 STARS OF ORION'S BELT



The main reason for such structures remains a partial mystery although it is thought that such center were used for spiritual and religious purposes. Such structures functioned also, as it has been postulated as centers that kept 'time', astronomical and astrological.

Silver Gate

Gate of Man



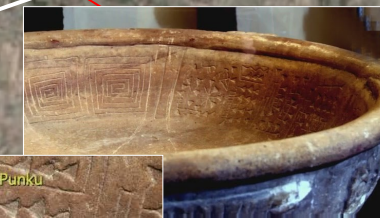
TAURUS

The Wrath, Judgment

PLEIADES?

The Redeemed Congregation—Bride

This pre-Inca civilization is thought to have been established at the same time as the Great Pyramids of Giza and Teotihuacan in Mexico among others like Ur and Babylon. There is even the famous Fuente Magna Bowl that can be read in Sumerian cuneiform and Proto Sumerian hieroglyphs and verified by leading linguistic experts although still controversial.



Ziggurat of Ur



The Orion star map is seen all over the world and especially in ancient religious pyramid sites, such as in Ur, the ancient home from the Biblical Abraham came out of.

GATE OF THE SUN

The pre-Inca civilization perhaps was one of the societies that ventured to spread around the world once the Biblical account of the Tower of Babel occurred and the single language known to Mankind was confused. The various evidences suggests that that all the immediate post-Flood civilizations had a common core to everything as suggesting by findings in language, architecture and astro-archeology.



ORION

The Teacher, Lover, Hero Redeemer
Son of Man

Museum

Puma Punku

Image © 2015 CNES / Astrium

Google Earth

3 of 6

© Composition & Some Graphics by
LUIS B. VEGA
vegapost@hotmail.com
www.PostScripts.orr

Some Sources

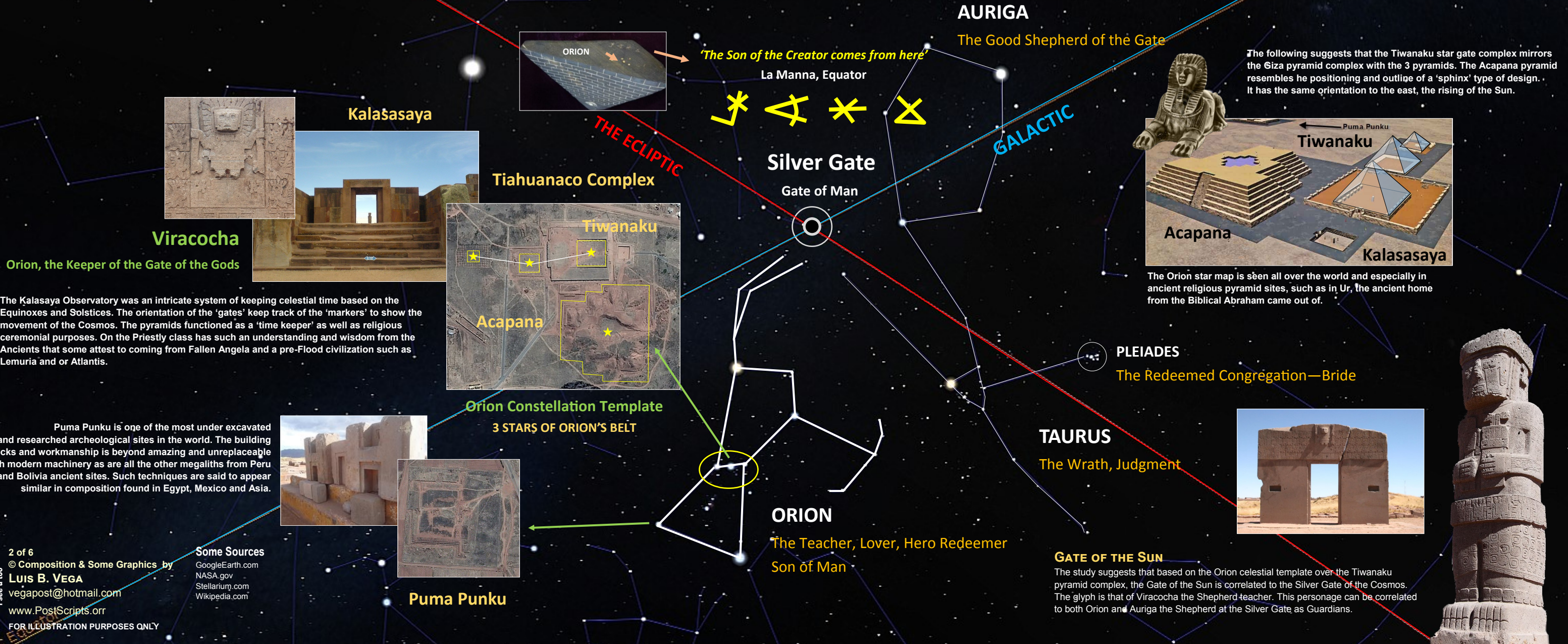
GoogleEarth.com
NASA.gov
Stellarium.com
Wikipedia.com

FOR ILLUSTRATION PURPOSES ONLY

TIAHUANACO STAR GATES 2

CELESTIAL PATTERN OF ORION-PLEIADES CONSTELLATIONS

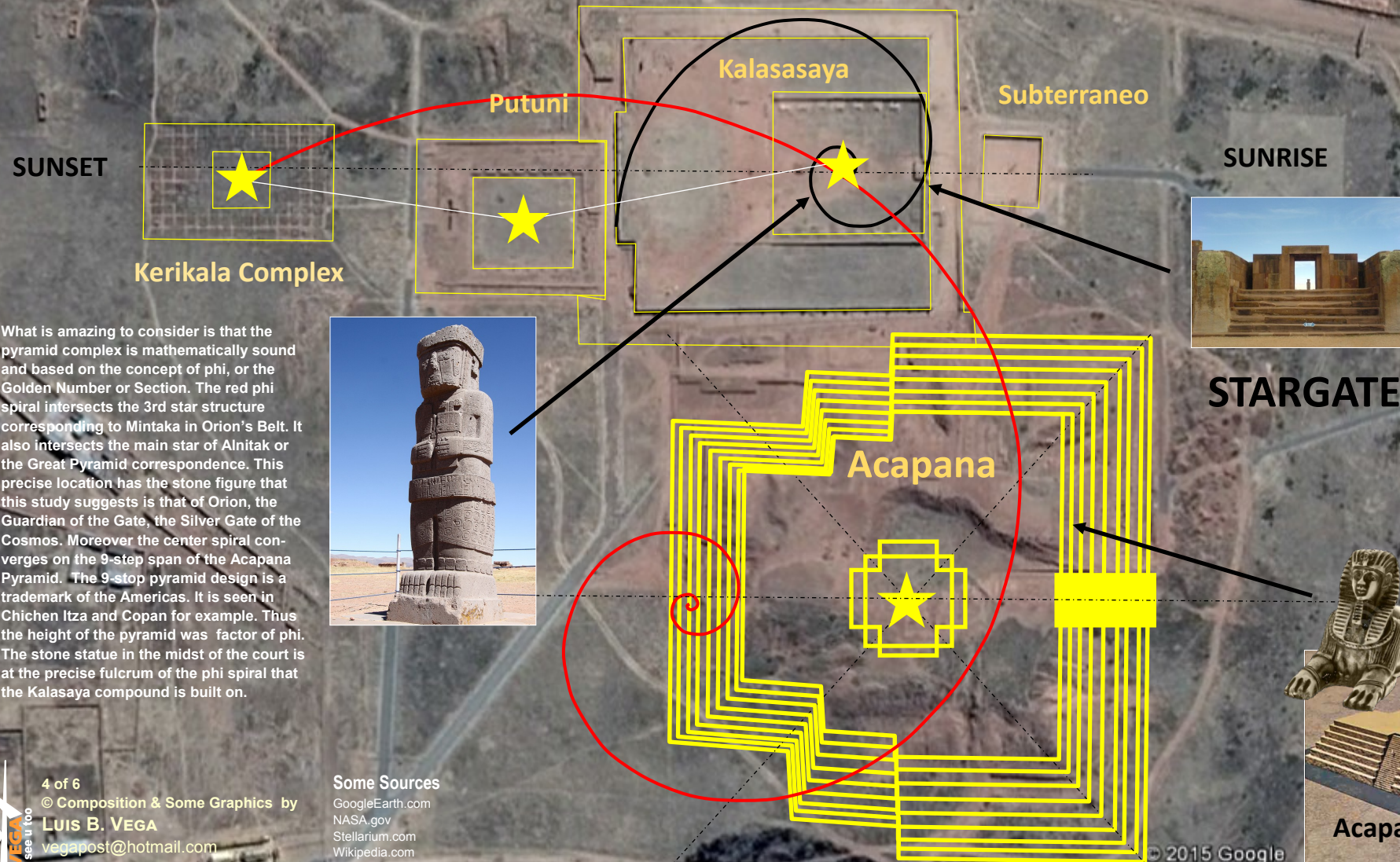
The purpose of this diagram is to show a possible celestial correlation between the Orion-Silver Gate and the Tiahuanaco pyramid complex in Bolivia. The Tiahuanaco archeological complex is suggested to be a template of the Orion Belt constellation in particular at Tiwanaku. This is where there are 2 Star Gate configurations that suggest a direct correlation to the Silver Gate. The Guardian of the Gate, is Viracocha. This personage is none other than Orion, the Teacher and Redeemer that promised to return at the End of Days to save humanity from extension. The Orion template encompasses the area and corresponds to the various stars. For example the Puma Punku site corresponds to the star Saiph. Precisely the Tiwanaku complex has 3 main square building configurations. These 3 chambers or areas closely approximates the angle and degree of that of the Great Pyramids of Giza in Egypt that have most notably been recognized as a star map of Orion and the Cosmos. The site is considered a pre-Inca civilization that knew the calculations, mathematics and sacred geometry of the constellations and replicated them on earth at places that incorporated the topography of the landscape to mirror that of the constellations with mounts, rivers and landmarks.



TIAHUANACO STAR GATES 4

CELESTIAL PATTERN OF ORION-PLEIADES CONSTELLATIONS

The following suggests that the Tiwanaku star gate complex mirrors the Giza pyramid complex with the 3 pyramids. The Acapana pyramid resembles the positioning and outline of a 'sphinx' type of design. It has the same orientation to the east, the rising of the Sun. The Giza template is rotated clockwise 90 degrees and reverse 180 degrees. It essentially is a mirror image of the Giza template. The Ancients had a specific fascination with Orion and the Pleiades. Above all the rest of the constellations. What was and will be so particular about Orion and the Pleiades that most if not all ancient civilizations after the Flood commemorated their worship centers into a cosmic mirror. One striking clue was found in Equator from the same time period that these pre-Inca and some would say pre-Flood civilizations that shows a plausible explanation. A pyramid was found with the base showing the constellation of Orion and some writing that is more Sanskrit than Inca. It has been verified to show that it is commemorating from where the 'Son of the Creator will be coming from'. If this is any indication of the etymology of where the veneration of such pyramid complexes are coming from it stands to reason that perhaps the Ancients know of the Redeemer story or Gospel written in the stars as E.W. Bullinger attested to and wrote about in.



What is amazing to consider is that the pyramid complex is mathematically sound and based on the concept of phi, or the Golden Number or Section. The red phi spiral intersects the 3rd star structure corresponding to Mintaka in Orion's Belt. It also intersects the main star of Alnitak or the Great Pyramid correspondence. This precise location has the stone figure that this study suggests is that of Orion, the Guardian of the Gate, the Silver Gate of the Cosmos. Moreover the center spiral converges on the 9-step span of the Acapana Pyramid. The 9-step pyramid design is a trademark of the Americas. It is seen in Chichen Itza and Copan for example. Thus the height of the pyramid was factor of phi. The stone statue in the midst of the court is at the precise fulcrum of the phi spiral that the Kalasaya compound is built on.



Some Sources

GoogleEarth.com
NASA.gov
Stellarium.com
Wikipedia.com

4 of 6

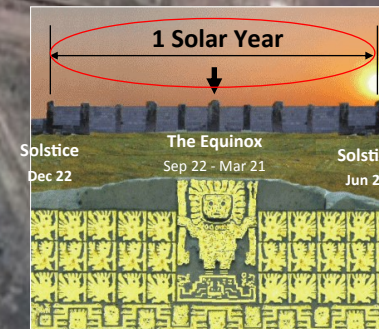
© Composition & Some Graphics by

LUIS B. VEGA

vegapost@hotmail.com

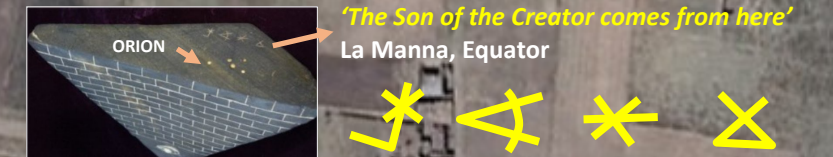
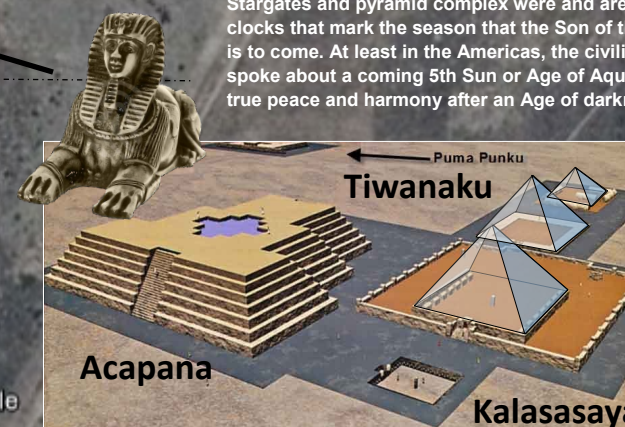
www.PostScripts.org

FOR ILLUSTRATION PURPOSES ONLY



The Sun Gate is believed to have kept time of the solar year from Winter Solstice to Spring Solstice and the Equinox. This would mirror the how for example the Sun enters the Golden Gate, or Gate of God in December 22 on the Solstice and through the Silver Gate in Summer Solstice in June 22. The timing of the year was believed to be marked by the pillars on the opposite wall of the complex.

Perhaps the Great Pyramid of Giza as the Tiahuanaco Stargates and pyramid complex were and are time clocks that mark the season that the Son of the Creator is to come. At least in the Americas, the civilizations spoke about a coming 5th Sun or Age of Aquarius of true peace and harmony after an Age of darkness.



Edmund Kiss (1937)

has done extensive research with precise measurements according to the sacred Egyptian Cubit. The following is the reconstruction of the Sun Gate that originally is thought to have been stated at the entrance of the Kalasasaya complex.



If the 'Son of the Creator was to come from Orion', then it would stand to reason that this personage would be a combination of a warrior, shepherd, gatekeeper, redeemer. Jesus in the Gospels did attribute his character as a Teacher, Shepherd and Redeemer; not just one among several but the absolute and the object of such legend and even cosmic storyline.

STARGATE OF THE SUN



TIAHUANACO STAR GATES 5

This illustration attempts to approximate the measurements of the Tiahuanaco pyramid complex using GoogleEarth coordinates. A much more accurate research has been done by Jim. M. Well, author of AtlantisBolivia for example. These approximate measurements show that the civilization has a keen understanding of mathematics but more so they had the sacred knowledge of the Golden Section and certain key numbers that are understood in the secret orders. Such numbers are 13, 144, 33 factors of 666, etc. As noted, these peoples apparently had direct contact with the outside world as their technology to build pyramids are the same and based on astro-archeology as this pyramid complex is mirrored to Orion.

One sacred knowledge of the building of the pyramid complex corresponding to the celestial constellations also functioned to 'clock' time. In the Americas, this notion was known as the Tzolkin. This segment of time was directly connected to not only the Earth energy ley-lines but those of the human body. This segment of sacred time was correlated to the gestation of a human being, 260 day cycle or approximately 9 months. This turns out to be 5/7 of a Solar Year which thus has the phi ratio or Fibonacci number sequences being based on the 5, 8, 13 and 20, etc. These cycles were understood to be 'rhythms' of sacred occurrences.



Acapana Pyramid - north side



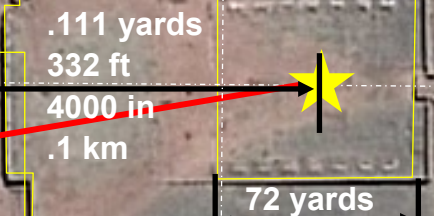
Kerikala Complex



Putuni



Kalasasaya



Kalasasaya Inner Court

perimeter

= .18 miles

= .33 miles

Subterraneo

.1 nautical mile

.1 km perimeter

Complex Diagonal

.18 km

.11 miles

SUNRISE

PERIMETER

The distance all the way around the outside of the 2 dimensional shape.

Outer court

perimeter

= .18 miles (666)

Inner court

perimeter

=.1 nautical mile

.18 km (666)

Acapana



Pyramid Diagonal

.18 miles

133° heading

.33 km

360 cubits

(Lunar)

111 smoots

.1 nautical miles

.18 km (666)

.11 nautical miles

.12 miles

6.66 arcseconds

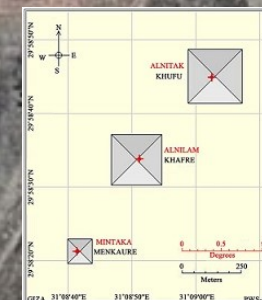
.21 km (777)

Image © 2015 CNES / Astrium

365.24 cubits (Solar)



Pre-Inca World Stone Map



The pre-Inca peoples had direct contact with the other ancient civilizations such as Egypt, Asia and perhaps Atlantis and Lemuria as one famous Stone Map was found that shows a circumnavigation of the planet with the area of the Inca and Jerusalem as their focal points. The continents are the same plus Atlantis it appears. This would corroborate Plato's assertion that Atlantis was beyond the Pillars of Hercules and sank as the continents drifted apart.

Google earth

5 of 6

© Composition & Some Graphics by
LUIS B. VEGA
vegapost@hotmail.com

www.PostScripts.orr

FOR ILLUSTRATION PURPOSES ONLY

Some Sources

GoogleEarth.com
NASA.gov
Stellarium.com
Wikipedia.com

TIAHUANACO STAR GATES 6

This illustration of Puma Punku attempts to approximate the measurements of the complex using GoogleEarth coordinates. There have been detailed measurements already but this will give an idea of the angle and scope of the site. What is amazing about Puma Punku is that the style of the block workmanship is almost identical to those used to build the pyramids in Mexico and Egypt. This study suggests that the Puma Punku pyramid complex is a celestial correlation to the constellation Orion. Precisely the site corresponds to the star Saiph. It appears that the complex has about a 3 degree inclination from North. Tiahuanaco pre-Inca civilization had a motif that is prevalent in its architecture and artwork; it is considered the Inca Cross. As this complex venerated Orion, It would not be a surprise as Orion's shield or symbol was that of a cross.

One unique element that was apparently factored into the design of this observational platform was the phi ratio. The complex is shown with the phi spiral for better reference of how the complex was delineated from the inner and outer court.

PUMA PUNKU

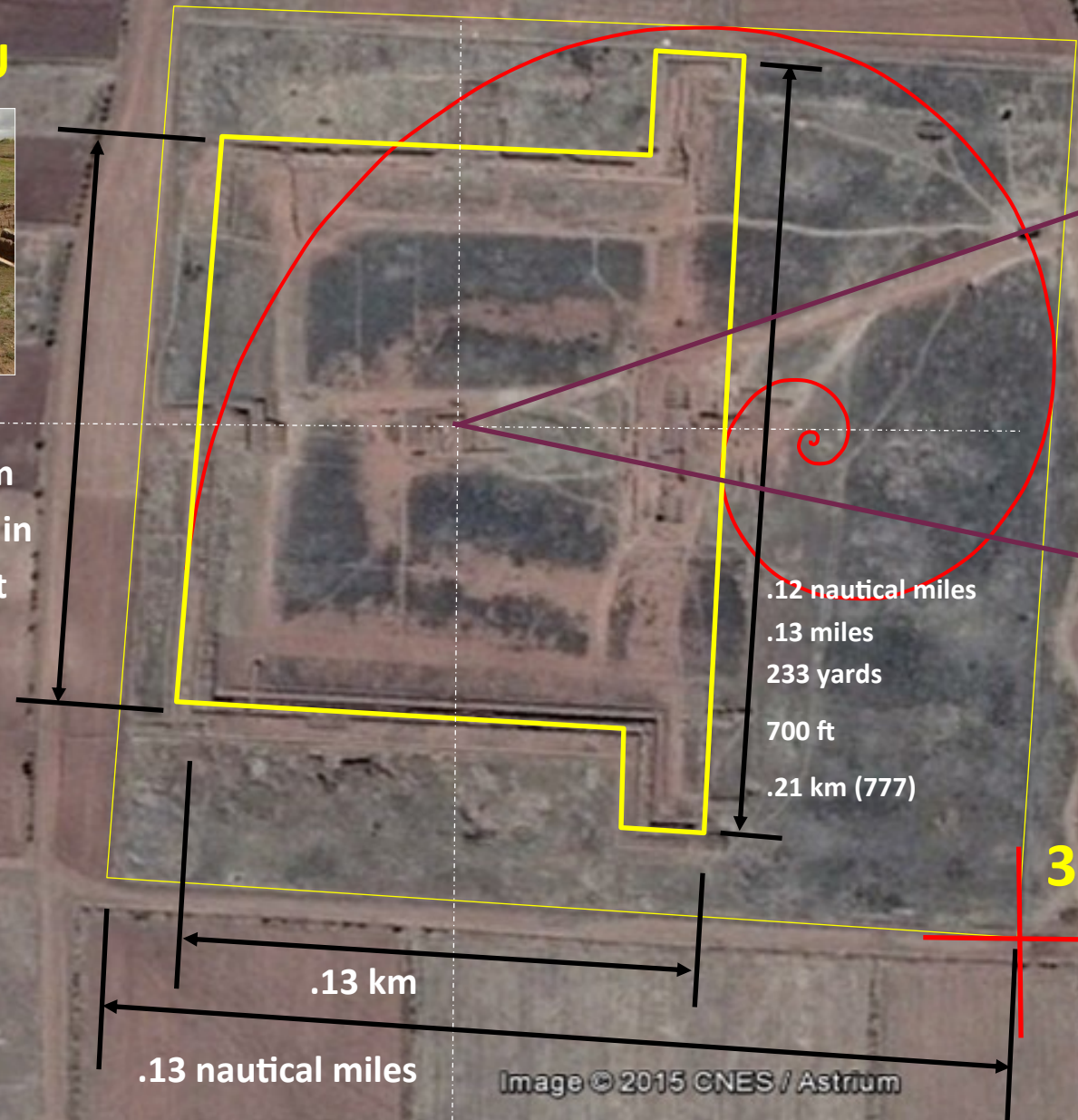


153 m
6000 in
500 ft

This site is famous for its 'H' letter building block that are multi-layered in the same block which is amazing to consider if such a society only had chisels to do it with. Some researchers believe these ancient civilizations possessed a technology at stone cutting and forming that is unknown to modern science and engineering. Perhaps it was due to some sort of layer cutting tool as the tolerances are not able to be replicated today.



Tiahuanaco Puma Punku Egypt



.13 km
.13 nautical miles

Image © 2015 CNES / Astrium

3°

From Puma Punku to Kalasasaya

33 arcseconds
.66 miles
1 km



The Sun Gate depicts Viracocha as handling 2 snakes. This would be consistent with another celestial constellation of Ophiuchus. In essence, Ophiuchus is wrestling with Serpens but Serpens is on of the constellations so large, it is sectioned off in 2 parts with Ophiuchus in the middle.

From Puma Punku to 'Rigel' star marker

.555 smoots
.51 nautical miles



The Inca Cross is consistent with the Viracocha or that like that of Quetzalcoatl motif. The Great Teacher had the cross as the means by which he was put to death. In some depictions he even has a lance that is thrust in the side as Jesus Christ was on the cross of Calvary. How and why did the first peoples of the Americans know about such a cosmic narrative?

