

Mouse Anti-HLA-DRB1 [LN3]: MC0162, MC0162RTU7

Intended Use: For Research Use Only

Description: HLA-DRB1 belongs to the HLA class II beta chain paralogs. Known as MHC class II antigen DRB1*15. The class II molecule is a heterodimer consisting of an alpha (DRA) and a beta chain (DRB), both anchored in the membrane. It plays a central role in the immune system by presenting peptides derived from extracellular proteins. HLA-DRB1 is expressed mainly on antigen-presenting cells, such as B lymphocytes, monocytes and dendritic cells but can also be detected on activated T lymphocytes and activated granulocytes. In abnormal tissues, it has been found in different types of acute lymphoblastic leukaemias and acute myeloid leukaemias. Additionally, HLADR was also found in some nonhemato, including carcinomas of the colon and breast.

Specifications:

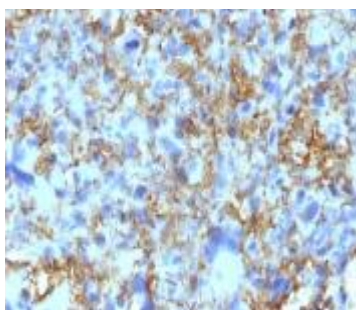
Clone: LN3
 Source: Mouse
 Isotype: IgG2b/k
 Reactivity: Human, monkey
 Localization: Membrane
 Formulation: Antibody in PBS pH7.4, containing BSA and ≤ 0.09% sodium azide (NaN3)
 Storage: Store at 2°- 8°C
 Applications: IHC, Flow Cyt., IF, WB
 Package:

Description	Catalog No.	Size
HLA-DRB1 Concentrated	MC0162	1 ml
HLA-DRB1 Prediluted	MC0162RTU7	7 ml

IHC Procedure*:

Positive Control Tissue: Tonsil
 Concentrated Dilution: 100-300
 Pretreatment: Citrate pH6.0, 15 minutes using Pressure Cooker, or 30-60 minutes using water bath at 95°-99°C
 Incubation Time and Temp: 30-60 minutes @ RT
 Detection: Refer to the detection system manual

* Result should be confirmed by an established diagnostic procedure.



FFPE human histiocytoma stained with anti-HLA-DRB using DAB

References:

1. Circulating histocompatibility antigen (HLA) gene products may help differentiate benign from malignant indeterminate pulmonary lesions. Kanangat S, et al. Hum Immunol 79:558-563, 2018.
2. Monoclonal antibodies to HLA--DRw determinants. Brodsky FM, et al. Tissue Antigens 16:30-48, 1980.

Doc. 100-MC0162
Rev. B