



STYLE
2701 / 2703 / 2705 / 2710

WEAVING
EXCELLENCE
WITH
INNOVATION



Code Color		SOLAR OPTICAL PROPERTIES				SHGC/G VALUE g-tot (glass & blind)		SOLAR OPTICAL PROPERTIES				SHGC/G VALUE g-tot (glass & blind)	
		TS	RS	AS	TV	SINGLE 1/4 CL	INSULATING 1 HA	TS	RS	AS	TV	SINGLE 1/4 CL	INSULATING 1 HA
STYLE 2701 FACE - 1%						STYLE 2701 BACK							
P12	Oyster	21	64	15	17	0.31	0.23	21	64	15	17	0.31	0.23
P13	Oyster/Beige	15	57	28	12	0.33	0.23	16	56	28	13	0.40	0.28
P14	Oyster/Pearl Gray	8	54	38	4	0.34	0.24	8	33	59	6	0.53	0.35
P28	Oyster/Charcoal	5	39	56	6	0.41	0.28	4	10	86	4	0.66	0.41
P91	Oyster/Pewter	6	43	51	6	0.39	0.26	5	19	76	5	0.61	0.38
P92	Oyster/Chestnut	6	41	53	6	0.40	0.28	5	13	82	5	0.64	0.40
V21	Charcoal	3	4	93	3	0.69	0.43	3	4	93	3	0.69	0.43
V22	Charcoal/Gray	3	14	83	3	0.63	0.40	3	6	91	3	0.68	0.42
V64	Charcoal/Slate	4	30	66	4	0.53	0.35	4	10	86	4	0.66	0.41
V65	Charcoal/Taupe	4	25	71	3	0.56	0.36	4	9	88	3	0.67	0.41
V66	Charcoal/Brown	4	17	78	4	0.62	0.39	4	7	89	4	0.68	0.42
STYLE 2703 FACE - 3%						STYLE 2703 BACK							
P12	Oyster	22	62	16	19	0.32	0.23	22	62	16	19	0.32	0.23
P13	Oyster/Beige	15	58	27	13	0.33	0.24	18	33	49	16	0.55	0.35
P14	Oyster/Pearl Gray	9	53	38	9	0.35	0.25	11	49	40	10	0.43	0.30
P28	Oyster/Charcoal	7	40	53	8	0.42	0.28	6	10	84	6	0.66	0.41
P91	Oyster/Pewter	8	44	48	9	0.40	0.27	8	19	73	8	0.61	0.39
P92	Oyster/Chestnut	7	42	51	8	0.41	0.28	8	14	78	8	0.64	0.40
V21	Charcoal	5	4	91	5	0.70	0.43	5	4	91	5	0.70	0.43
V22	Charcoal/Gray	5	13	82	5	0.64	0.40	5	6	89	5	0.68	0.42
V64	Charcoal/Slate	7	27	65	7	0.56	0.36	7	10	83	7	0.67	0.41
V65	Charcoal/Taupe	6	24	70	6	0.58	0.37	6	8	86	6	0.67	0.42
V66	Charcoal/Brown	6	17	77	6	0.62	0.39	6	7	87	6	0.68	0.42
STYLE 2705 FACE - 5%						STYLE 2705 BACK							
P12	Oyster	22	62	16	20	0.32	0.23	22	62	16	20	0.32	0.23
P13	Oyster/Beige	23	54	23	21	0.37	0.26	23	48	29	21	0.47	0.31
P14	Oyster/Pearl Gray	19	51	30	21	0.38	0.26	17	34	49	16	0.54	0.35
P28	Oyster/Charcoal	12	40	48	14	0.43	0.29	11	11	78	12	0.67	0.41
P91	Oyster/Pewter	11	46	43	12	0.39	0.27	13	22	65	14	0.61	0.38
P92	Oyster/Chestnut	12	43	45	13	0.41	0.28	12	20	68	12	0.62	0.39
V21	Charcoal	7	4	89	7	0.70	0.43	7	4	89	7	0.70	0.43
V22	Charcoal/Gray	8	6	86	8	0.69	0.43	8	12	80	8	0.65	0.41
V64	Charcoal/Slate	9	25	66	8	0.58	0.37	9	9	83	8	0.68	0.42
V65	Charcoal/Taupe	9	21	70	8	0.60	0.38	9	8	84	8	0.68	0.42
V66	Charcoal/Brown	9	16	75	8	0.64	0.40	9	7	85	8	0.69	0.42
STYLE 2710 FACE - 10%						STYLE 2710 BACK							
P12	Oyster	34	54	12	32	0.39	0.27	34	54	12	32	0.39	0.27
P13	Oyster/Beige	29	51	20	28	0.40	0.27	29	47	24	28	0.49	0.32
P14	Oyster/Pearl Gray	27	41	33	25	0.45	0.29	25	51	24	23	0.39	0.27
P28	Oyster/Charcoal	21	37	42	24	0.46	0.30	20	17	63	21	0.65	0.40
P91	Oyster/Pewter	24	43	33	25	0.44	0.29	21	25	54	23	0.61	0.38
P92	Oyster/Chestnut	25	41	34	26	0.45	0.30	22	20	58	23	0.64	0.40
V21	Charcoal	15	4	81	15	0.72	0.44	15	3	81	15	0.72	0.44
V22	Charcoal/Gray	15	10	76	14	0.68	0.42	15	5	80	14	0.71	0.43
V64	Charcoal/Slate	15	16	69	15	0.65	0.40	15	7	78	15	0.70	0.43
V65	Charcoal/Taupe	15	17	69	14	0.64	0.40	15	7	78	14	0.70	0.43
V66	Charcoal/Brown	14	12	74	14	0.67	0.41	14	6	80	14	0.71	0.43

TS = Solar Transmittance | RS = Solar Reflectance | AS = Solar Absorptance | TV = Visual Transmittance | SHGC = Solar Heat Gain Coefficient
1/4 CL = 1/4" Clear Glass | 1 HA = 1" Heat Absorbing Glass | Fabrics Installed Internally | Zero-Degree Profile Angle
For additional performance values, test references and technical definitions visit us at www.phifer.com.

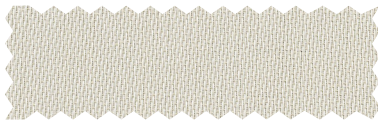
P12 Oyster



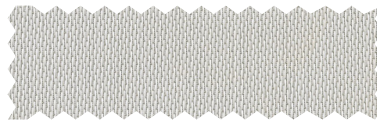
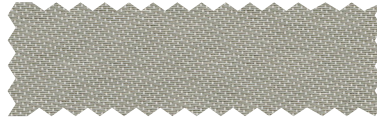
V21 Charcoal



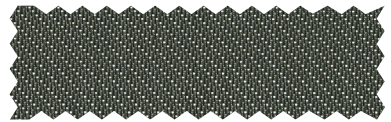
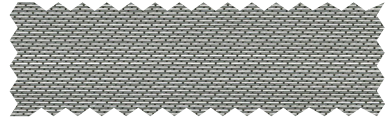
P13 Oyster / Beige - face
Oyster / Beige - back



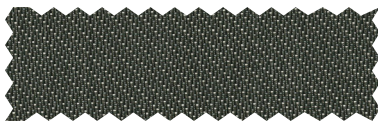
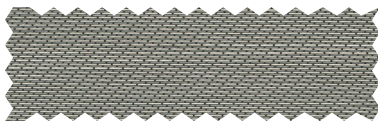
P14 Oyster / Pearl Gray - face
Oyster / Pearl Gray - back



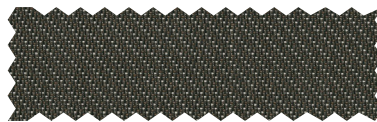
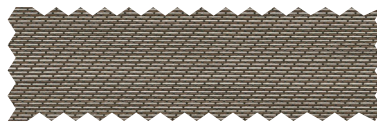
V64 Charcoal / Slate - face
Charcoal / Slate - back



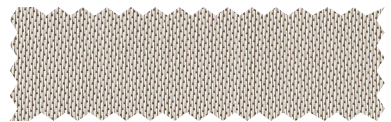
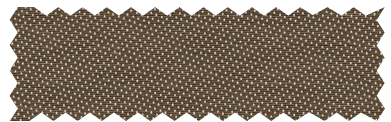
V65 Charcoal / Taupe - face
Charcoal / Taupe - back



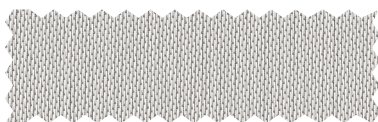
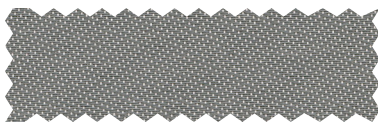
V66 Charcoal / Brown - face
Charcoal / Brown - back



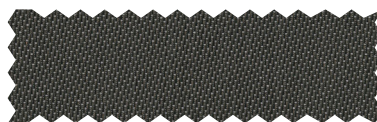
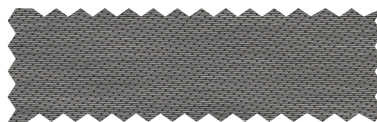
P92 Oyster / Chestnut - face
Oyster / Chestnut - back



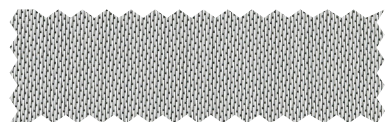
P91 Oyster / Pewter - face
Oyster / Pewter - back



V22 Charcoal / Gray - face
Charcoal / Gray - back



P28 Oyster / Charcoal - face
Oyster / Charcoal - back



PROTECTION THAT LIVES ON
MICROBAN

Microban® antimicrobial protection inhibits the growth of stain-causing bacteria, mold and mildew on the shade.



MIF Seal of Approval



SAFE USE



TRACKLESS TECHNOLOGY



PROUDLY MADE
IN THE USA



HALOGEN FREE
FLAME RETARDANT



GREENGUARD
GOLD



PRINTABLE



ENERGY SAVING



10
YEAR
INTERIOR WARRANTY



5
YEAR
EXTERIOR WARRANTY

STYLE 2701 / 2703 / 2705 / 2710 SPECIFICATIONS

Styles 2701, 2703, 2705 and 2710 are woven from a unique twill pattern that displaces the individual yarns to create a two-sided fabric for maximum performance in heat reduction, glare reduction and improved visibility. Styles 2701, 2703, 2705 and 2710 can also be used in exterior roller shades.

FIRE CLASSIFICATION	NFPA 701 TM#1 (small scale) NFPA 701 TM#2 (large scale) NFPA 101 (Class A Rating) California U.S. Title 19 (small scale)	BS 5867 Part 2 Type B Performance CAN/ULC-S 109 (large and small scale) CAN/CGSB2-4.162-M80 IBC Section 803.1.1 (Class A Rating)
STYLE 2703 ONLY	CAN/ULC S-102 <i>Fire classifications are subject to change. Please go to phifer.com for the most current information.</i>	
BACTERIA AND FUNGAL RESISTANCE	ASTM E 2180 ASTM G21 ASTM G22 AATCC30 Part 3 ASTM D 3273 GREENGUARD Mold and Bacteria Standard ASTM 6329 includes Microban antimicrobial additives	
ENVIRONMENTAL CERTIFICATION	GREENGUARD GREENGUARD Gold Certified to these standards for low chemical emissions into indoor air during product usage	
SAFE USE	RoHS/Directive 2002/95/EC REACH (EC 1907/2006) compliant ANSI/WCMA A 100.1-2007 for lead content US Consumer Product Safety Commission Section 101	
WARRANTY	10-year interior 5-year exterior	
ACOUSTICAL PERFORMANCE	NRC (Noise Reduction Coefficient) and SAA (Sound Absorption Average) tested in accordance with ASTM C423-09a	
UV PROTECTION	Seal of Approval by the Melanoma International Foundation (MIF) for effectiveness in preventing sun damage to the skin or eyes	
TRACKLESS	TrackLess Technology minimizes the fiberglass yarns' inherent tendencies to track when being rolled up in a shade. With TrackLess Technology these same fabrics now track less, roll up straighter and reduce shade fabrication time.	

STYLE	2701	2703	2705	2710
WIDTHS	63", 98" and 126" 160 cm, 248.9 cm and 320 cm	63", 98" and 126" 160 cm, 248.9 cm and 320 cm	63", 98" and 126" 160 cm, 248.9 cm and 320 cm	63" and 98" 160 cm and 248.9 cm
ROLL LENGTH	30 Linear Yards 27.4 Linear Meters	30 Linear Yards 27.4 Linear Meters	30 Linear Yards 27.4 Linear Meters	30 Linear Yards 27.4 Linear Meters
COMPOSITION	36% Fiberglass 64% Vinyl on Fiberglass	36% Fiberglass 64% Vinyl on Fiberglass	34% Fiberglass 66% Vinyl on Fiberglass	34% Fiberglass 66% Vinyl on Fiberglass
MESH WEIGHT	14.6 oz/yd ² 495 g/m ²	14.0 oz/yd ² 475 g/m ²	11.8 oz/yd ² 379 g/m ²	10.4 oz/yd ² 353 g/m ²
FABRIC THICKNESS	0.027 in 0.66 mm	0.028 in 0.71 mm	0.025 in 0.64 mm	0.023 in 0.58 mm
OPENNESS FACTOR	Approximately 1%	Approximately 3%	Approximately 5%	Approximately 10%
UV BLOCKAGE	Approximately 99%	Approximately 97%	Approximately 95%	Approximately 90%
ACOUSTICAL VALUE	NRC .15 / SAA .15	NRC .10 / SAA .09	NRC .05 / SAA .06	NRC .05 / SAA .05



P. O. Box 1700 • Tuscaloosa, Alabama 35403 -1700 USA
Phone: 205.345.2120 • FAX: 205.391.0799
Toll Free USA/Canada: 1.800.221.5497
phifer.com • ISO Registered



© SheerWeave is a registered trademark of PHIFER INCORPORATED.
© MICROBAN is a registered trademark of Microban Products Company.
™ UL, the UL logos and the UL mark are trademarks of UL LLC.
Photo courtesy of Draper INC., Spiceland, Indiana, USA.
© PHIFER INCORPORATED V20 021420 3033833