



CONSERVATION PRACTICES AND LOUDOUN'S NFIP FLOODPLAIN ORDINANCE

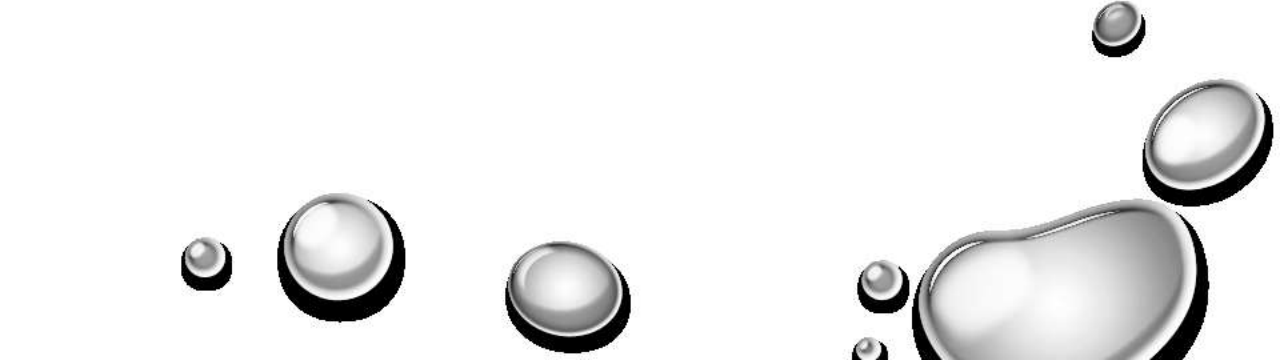
...OR HOW I LEARNED TO STOP WORRYING ABOUT KEEPING LIVESTOCK
OUT OF STREAMS AND ESTABLISHING FORESTED RIPARIAN BUFFERS...

CHRIS VAN VLACK

URBAN/AG CONSERVATIONIST, LOUDOUN SWCD



LOUDOUN SWCD'S CONSERVATION PROGRAMS

- VIRGINIA AG BMP PROGRAM (EST. 1980S)
 - LOUDOUN COUNTY FUNDED HORSE AND SMALL FARM COST SHARE PROGRAM (AG BMP PROGRAM FOR FARMS NOT ELIGIBLE FOR STATE PROGRAM) (EST. 2012)
 - COUNTY FUNDED NON-AG RIPARIAN BUFFER PLANTING PROGRAM (FOCUSED ON HOA OPEN SPACE, SUBURBAN LANDOWNERS, NON-FARMING PROPERTIES (EST. 2012)
 - VCAP (VIRGINIA CONSERVATION ASSISTANCE PROGRAM (EST. 2016)
 - VOLUNTEER PLANTINGS
- 

STREAM FENCING, TREE PLANTINGS, LIVESTOCK CROSSINGS, WATER TROUGHS




MORE PRACTICES...






UH OH...FLOODPLAIN ORDINANCE... IMPACTS ON LSWCD CONSERVATION PROGRAMS

- IN FY2015, LSWCD HAD 33 AG BMP COST SHARE PROJECTS. 25 HAD SOME FENCING LOCATED IN FLOODPLAIN.
 - OF THE 20 COUNTY FUNDED SMALL/HORSE FARM PROJECTS, 7 HAD FENCING IN FLOODPLAIN
 - IN THE YEAR PRIOR TO THE NEW FLOODPLAIN ORDINANCE, WE SIGNED UP 6 NON-AG BUFFER PLANTING PROJECTS (WITH 5 SUCCESSFULLY COMPLETED). THIS YEAR WE WERE ONLY ABLE TO APPROVE 1.
- 




WHAT DOES THE NEW FLOODPLAIN ORDINANCE REQUIRE?

- IN ORDER TO PLANT A RIPARIAN BUFFER (TREES ADJACENT TO STREAM IN THE FLOODPLAIN), AN ENGINEER MUST CERTIFY THAT THE PLANTING WILL CAUSE “NO RISE” TO DO THIS REQUIRES A FLOODPLAIN STUDY. FLOODPLAIN STUDIES COST THOUSANDS...ARE NOT ELIGIBLE FOR COST SHARE. FLOODPLAIN ALTERATION PERMIT THEN MUST BE OBTAINED.
 - SAME PROCESS FOR LIVESTOCK EXCLUSION FENCING (ALSO NO ADDITIONAL COST SHARE AVAILABLE)
 - ONLY 2 PLANTING PROJECTS HAVE BEEN ABLE TO OVERCOME THIS BARRIER...BOTH HAD EXISTING FLOODPLAIN STUDIES FROM THE TIME OF DEVELOPMENT. PAYING THE ENGINEER TO CERTIFY EVEN WITHOUT A NEW STUDY COST THOUSANDS.
- 

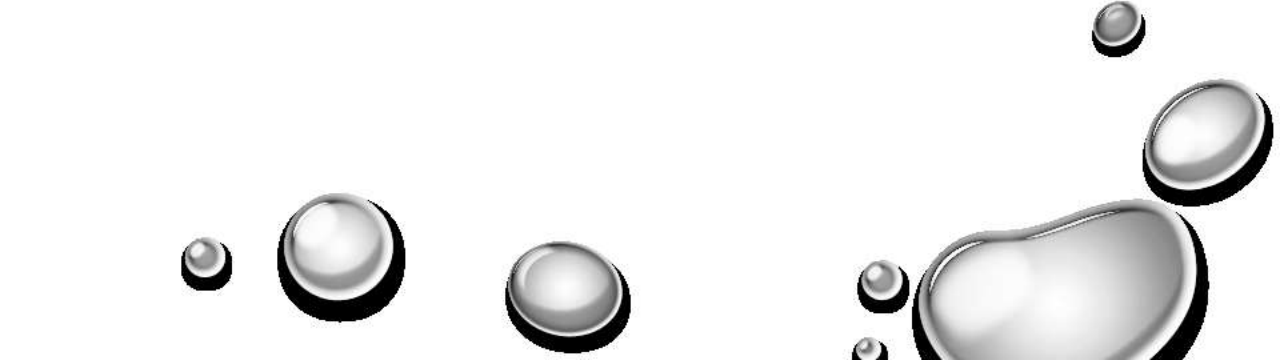


WHY DOES THIS MATTER?

- POLLUTION REDUCTION GOALS FROM AG BEST MANAGEMENT PRACTICES ARE THE #1 COST EFFECTIVE MEASURE OF MEETING THE REQUIRED GOALS OF THE CHESAPEAKE BAY TMDL
 - LOUDOUN'S AG BMP PROJECTS ARE DOCUMENTED THROUGH THE AG BMP TRACKING PROGRAM TO BE MODELED AS PART OF MEETING THE REQUIREMENTS OF THE TMDL
 - PLANTING PROJECTS HAVE BEEN TRACKED BY LOUDOUN COUNTY TO MEET LOUDOUN'S NUTRIENT AND SEDIMENT REDUCTION GOALS FOR THE TMDL
 - LOCAL WATER QUALITY SUFFERS, FARMERS AND SUBURBAN RESIDENTS LOSE FAITH
- 



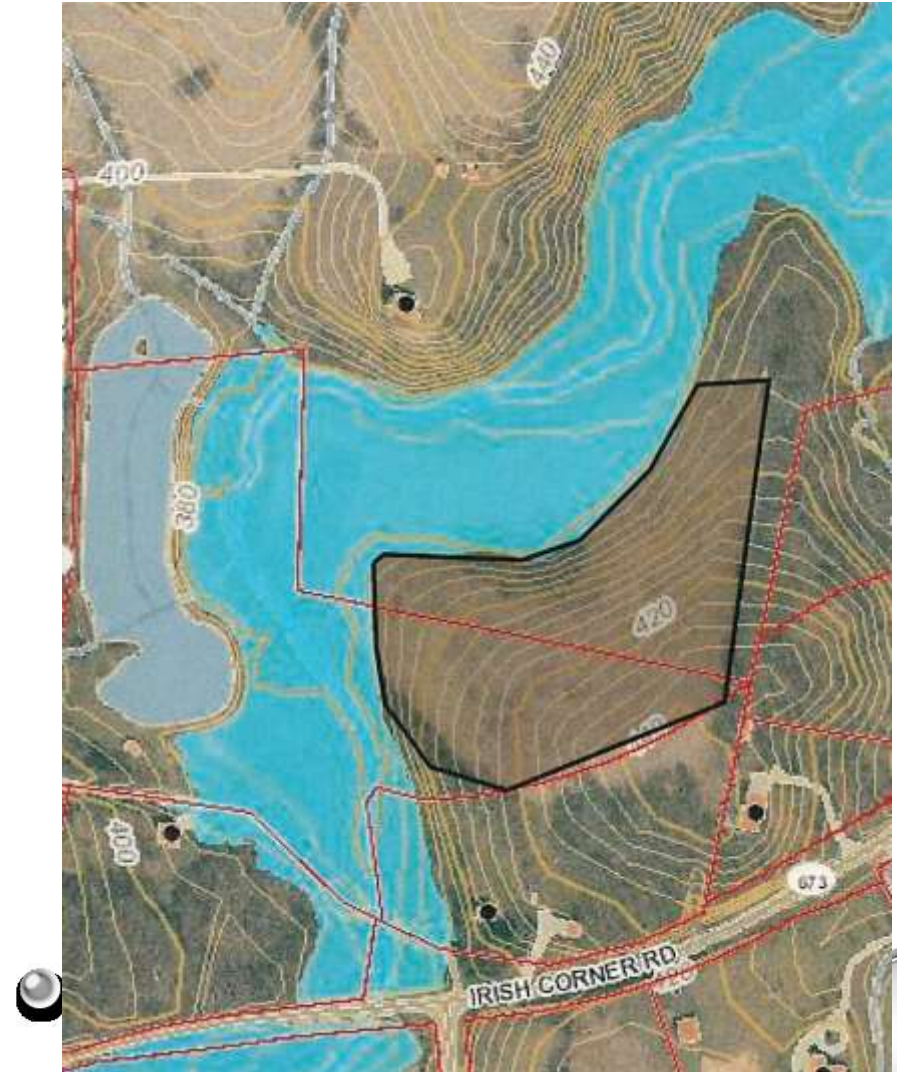
WHY DOES THIS MATTER, CONTINUED

- LOUDOUN SWCD HAS NEVER RECEIVED A FLOOD RELATED COMPLAINT DUE TO A STREAM FENCING OR RIPARIAN PLANTING PROJECT IN THE ALMOST 40 YEARS OF THE AG BMP COST SHARE PROGRAM.
 - NO OTHER JURISDICTION IN VIRGINIA OUTSIDE OF LOUDOUN COUNTY ACTIVELY RESTRICTS LIVESTOCK FENCING OR RIPARIAN BUFFER PLANTINGS DUE TO A FEMA NFIP ORDINANCE (YET?)
- 

WHAT IS IN CONFLICT?

- IF LSWCD CANNOT MEET OUR GRANT AGREEMENTS FOR AG BMP IMPLEMENTATION WITH DCR, WE WILL BE IN NON COMPLIANCE AND LOSE FUNDING (AND LOUDOUN FARMERS LOSE OUT ON FUNDING TO BENEFIT OUT SURFACE WATERS)
- AG STEWARDSHIP ACT VIOLATIONS IN LOUDOUN HAVE REQUIRED STREAM AND POTOMAC RIVER FENCING TO MEET PLANS FOR COMPLIANCE. THAT FENCE HAS BEEN PLACED IN THE FLOODPLAIN (OR THE FARMER COULD LOSE 1/3 OF THEIR USEABLE PASTURE) IF THE FENCE DOESN'T GO IN, THEY ARE OUT OF COMPLIANCE WITH VDACS, IF IT GOES IN...ARE THEY OUT OF COMPLIANCE WITH LOUDOUN COUNTY?
- CURRENTLY THE ORDINANCE IS DE FACTO ENCOURAGING LANDOWNERS AND HOA'S TO MAINTAIN RIPARIAN AREAS AS MANAGED TURF, MAINTAINING IT BY REGULAR MOWING, INSTEAD OF PLANTING NATIVE TREES AND CREATING FORESTED RIPARIAN FILTER AREAS.

A REAL WORLD CASE:





THE RESULT?

FARMERS WITH THE DAIRY GOAT OPERATION
DECIDED AGAINST STREAM FENCING AS IT REMOVED
TOO MUCH OF THEIR AVAILABLE PASTURE AND
NEEDED FOREST GRAZING/SHADE AREAS.



- 
- The image features a white background with several realistic, 3D-rendered bubbles of various sizes. These bubbles are positioned in the corners: top-left, top-right, and bottom-right. The bubbles have a metallic or glass-like sheen, with highlights and shadows that give them a three-dimensional appearance. In the center of the page, there is a list of two items, each preceded by a bullet point.
- THANK YOU!
 - (AND PLEASE HELP!)