

Rabbit Anti-NM23 [EP276]: RM0387

Intended Use: For Research Use Only

Description: NM23 has been identified as a metastatic suppressor gene, encoding a nucleoside diphosphate kinase. It was reported that differential regulation of NM23 by p53 in different cell types is an important component in the molecular mechanisms of tumor metastasis. NM23 expression has been associated with tumor progression in many types of tumors including cancers of the breast, colon, ovaries, and pancreas.

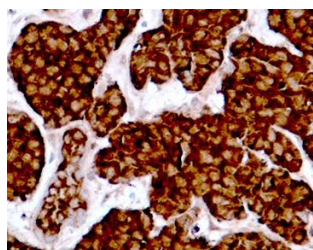
Specifications:

Clone: EP276
Source: Rabbit
Isotype: IgG
Reactivity: Human
Localization: Cytoplasm, nucleus
Formulation: Antibody in PBS pH7.2, containing < 0.2% BSA and < 0.09% sodium azide (NaN₃).
Storage: Store at 2°- 8°C.
Applications: IHC
Package:

Description	Catalog No.	Size
NM23 Concentrated	RM0387	1 ml

IHC Procedure*:

Positive Control Tissue: Breast carcinoma
Concentrated Dilution: 50-200
Pretreatment: Citrate pH6.0 or EDTA pH8.0, 15 minutes using Pressure Cooker, or 30-60 minutes using water bath at 95°-99°C
Incubation Time and Temp: 30-60 minutes @ RT
Detection: Refer to the detection system manual
* Result should be confirmed by an established diagnostic procedure.



FFPE human breast carcinoma stained with anti-NM23 using DAB

References:

1. Loss of Nm23 is associated with a more favorable tumor microenvironment in patients with breast cancer. Durán E, et al. *Histol Histopathol.* Mar;30(3):345-52, 2015.
2. Diagnostic value of CD56 and nm23 markers in papillary thyroid carcinoma. Shahebrahimi K, et al. *Indian J Pathol Microbiol.* Jan-Mar;56(1):2-5, 2013.
3. Prognostic significance of estrogen receptor, progesterone receptor, HER2/neu, Ki-67, and nm23 expression in patients with invasive breast cancer. Cubukcu E, et al. *J BUON.* Apr-Jun;18(2):359-65, 2013.
4. Subcellular localization of Nm23/NDPK A and B isoforms: a reflection of their biological function? Bosnar MH, et al. *Mol Cell Biochem.* Sep;329(1-2):63-71, 2009.
5. Nuclear localization and intensity of staining of nm23 protein is useful marker for breast cancer progression. Ismail NI, et al. *Cancer Cell Int.* May 5;8:6, 2008.

Doc. 100-RM0387
Rev. A