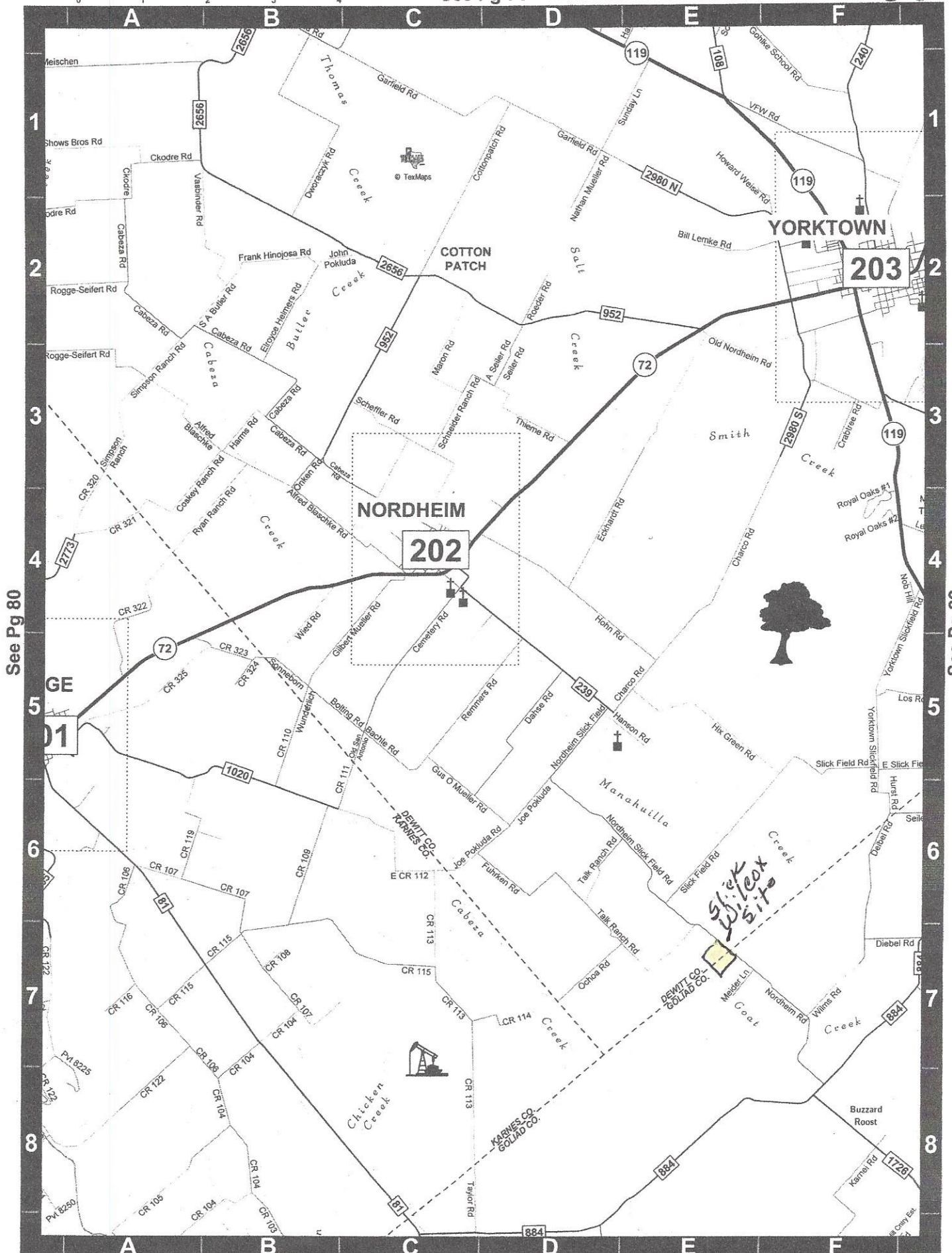
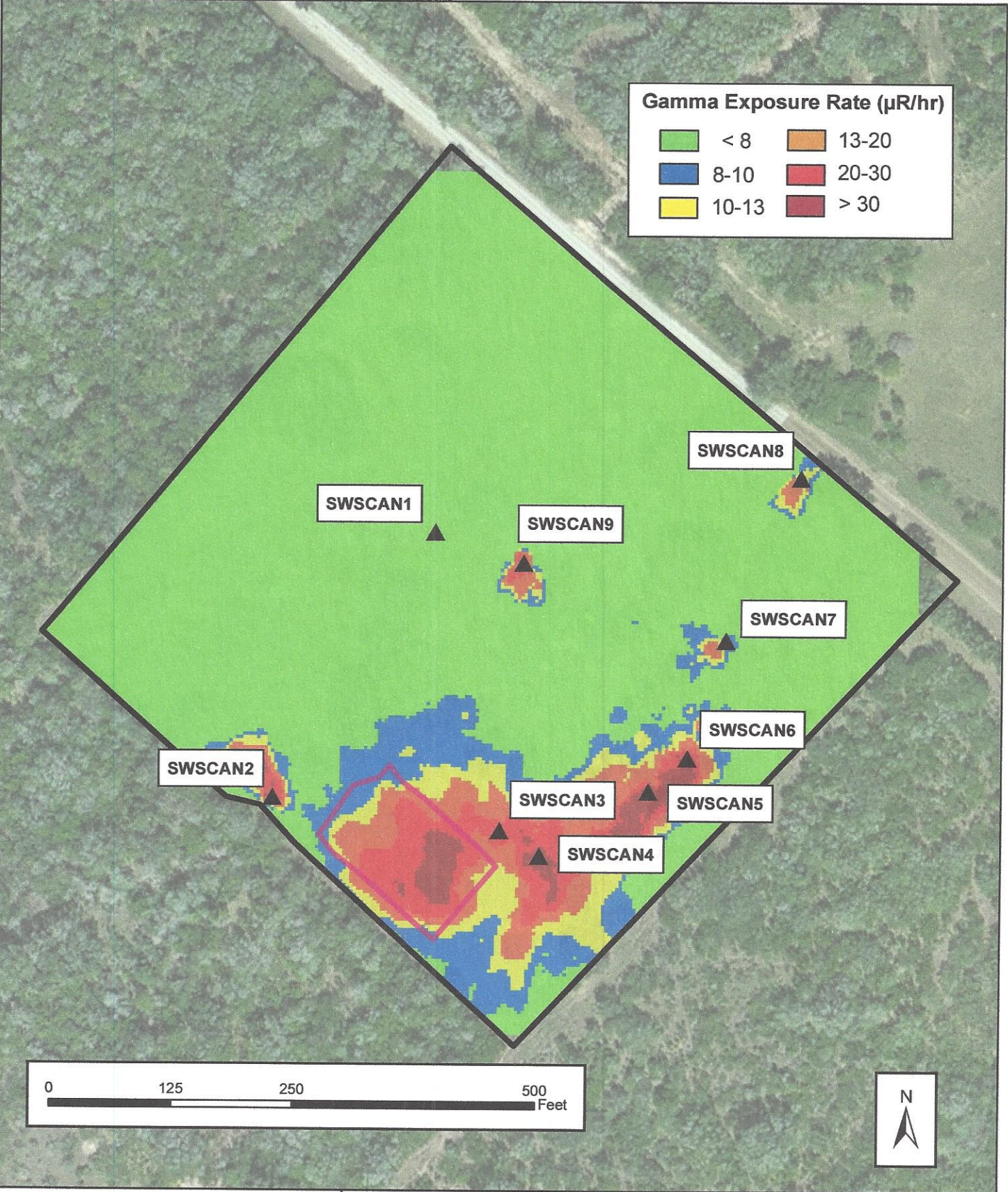


<p>Legend:</p> <p>0 2 4 8 Miles</p> <p>■ Slick Wilcox Site Location</p> <p>● Conquista Site Location</p>		<p>Sources: Esri, DeLorme, HERE, USGS, Intermap, increment P Corp., NRCAN, Esri Japan, METI, Esri China (Hong Kong), Esri (Thailand), TomTom</p> <p>Issued by:</p> <p>TETRA TECH</p> <p>6911 North Capital of Tx Highway Building 2, Suite 2310 Austin, TX 78759 (512) 338-1657</p>	<p>Site Area Map</p> <table border="1"> <tr> <td>Project</td> <td>Conquista</td> <td>Project Number</td> <td>114-021567</td> </tr> <tr> <td>Location</td> <td>Falls City, Texas</td> <td>Date</td> <td>May, 2014</td> </tr> </table>	Project	Conquista	Project Number	114-021567	Location	Falls City, Texas	Date	May, 2014	<p>Figure 1</p>
Project	Conquista	Project Number	114-021567									
Location	Falls City, Texas	Date	May, 2014									



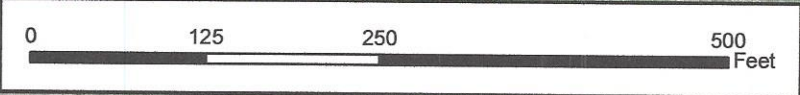
See Pg 80

See Pg 82



■ < 8	■ 13-20
■ 8-10	■ 20-30
■ 10-13	■ > 30

C:\Users\saaron.orechwal\Desktop\Slick Wilcox GIS Folders\DMXD\Project Directory\Figure_8_Surface Soil_Samples_Map_wgamma_mn_NAD83.mxd



Legend:

	Slick Wilcox Site Boundary
	Tailings Impoundment Boundary

Issued by:



TETRA TECH
 3801 Automation Way, Suite 100
 Fort Collins, Colorado 80525
 (970) 223-9600 (970) 223-7171 fax


Surface Soil Sampling and Gamma Exposure Rate Map		 Revision	
Project:	Slick Wilcox		Project no.:
Location:	DeWitt County, Texas	May 2014	

Figure 8

5.2 Surface Soil Sampling Results

Outside the fenced tailings cell area, nine additional locations were sampled. The surface soil sampling locations are shown on Figure 8. Table 6 presents the laboratory results.

Table 6. Results - Soil Samples Taken Outside the Tailings Cell

Surface Soil Sample Location	Sample Depth (inches)	Ra-226 (pCi/g)	Uranium (mg/kg)
SWSCAN1	0-6	0.94	0.23
	6-12	0.65	0.24
SWSCAN2	0-6	8.4	3.7
	6-12	147	32
SWSCAN3	0-6	35.5	15
	6-12	4.82	9.4
SWSCAN4	0-6	36.3	13
	6-12	135	37
SWSCAN5	0-6	51.9	12
	6-12	42.1	7.1
	12-18	28.9	5.7
SWSCAN6	0-6	34.7	5
	6-12	19.5	2
SWSCAN7	0-6	22.7	16
	6-12	2.16	14
SWSCAN8	0-6	21.2	27
	6-12	2.6	7.8
SWSCAN9	0-6	2.84	2.1
	6-12	0.53	1.3