



# Northern Illinois Farm Bureaus

.....  
**FREE  
AIRFARE**

See back for details

.....  
**11 DAY RIVER CRUISE HOLIDAY**

Including two nights in  
Lucerne, Switzerland

## Tulip Time on Jewels of the Rhine

the Netherlands • Germany • France • Switzerland

**Tour Dates:** April 5 - 15, 2020





# Tulip Time on Jewels of the Rhine

**11 Days • 23 Meals** Enjoy a relaxing and inspiring cruise on the Romantic Rhine, Europe's longest river. Travel onboard a luxurious river ship, during tulip time, visiting iconic ports of call, sampling incredible cuisine, and absorbing the local culture.

## EXCEPTIONAL INCLUSIONS

- ❖ **23 Meals:** 9 breakfasts, 6 lunches and 8 dinners
- ❖ **Airport transfers** on tour dates when air is provided by Mayflower Cruises & Tours
- ❖ Visit **four countries**
- ❖ **Seven-nights in a suite or stateroom** of your choice
- ❖ **First-class service** by an English-speaking crew
- ❖ **All gratuities included** once aboard ship
- ❖ Explore the magnificent **Keukenhof Gardens**
- ❖ **Shore excursions** with English-speaking local guides
- ❖ Visits to **UNESCO World Heritage Sites**
- ❖ Personal **listening device** for shore excursions
- ❖ **All meals included** onboard
- ❖ Variety of **international cuisine**
- ❖ Complimentary **regional wines, beer and soft drinks** with onboard lunches and dinners
- ❖ Complimentary **bottled water** in your stateroom
- ❖ Complimentary **WiFi onboard**
- ❖ Complimentary **bicycles onboard** for use ashore
- ❖ All port charges included
- ❖ Two-night **hotel stay and touring** in Lucerne
- ❖ \$55 in **Mayflower Money**

## CRUISE AND HOTEL ACCOMMODATIONS

**Days Two through Eight** – Aboard an Emerald Waterways Star-Ship

**Days Nine and Ten** – TBA, Lucerne, Switzerland

*Pre or Post cruise hotel stays available in Amsterdam. Call for details.*



Enjoy seven-nights cruising along the Romantic Rhine River

### DAY 1 – Depart the USA

Depart the USA on your overnight flight to Amsterdam, the Netherlands.

### DAY 2 – Amsterdam, the Netherlands

Welcome to Amsterdam, a fascinating 700-year-old city of picturesque canals, world class museums, theatres and cafés. You will be met and transferred from the airport to your Emerald Waterways luxury river cruise ship. This evening, join your fellow travelers for dinner onboard. Your Cruise Director will also conduct a port talk to review the activities and itinerary for the days ahead. **Meal: D**

### DAY 3 – Keukenhof Gardens

This morning, depart by coach for an included visit to Keukenhof Gardens. Discover why it's called the 'Garden of Europe' as you admire gorgeous flowers at the peak of tulip season. Return to the ship for your first day cruising through the Dutch countryside, passing windmills and sailing through locks towards the Rhine River. Tonight, the Captain will be delighted to host a gala dinner.

**Meals: B, L, D**

### DAY 4 – Cologne, Germany

Cruise along the Rhine River to Cologne. Founded by the Romans, the city is one of Germany's oldest and famous for its magnificent World-Heritage listed gothic Cathedral. After lunch onboard, join your local guide for an included walking tour of the Old Town, with free time for exploring. Cologne is one of Germany's largest and most modern cities largely due to a rebuilding plan post WWII, and has many museums and galleries. **Meals: B, L, D**

*DiscoverMORE: Football Stadium Tour (extra expense)*

### DAY 5 – Koblenz, Germany

Cruise to the 2000-year-old town of Koblenz, situated at the confluence of the Rhine and Moselle Rivers. Enjoy a tour of Koblenz and visit the Ehrenbreitstein Fortress on the opposite side of the river. This fortress was part of the Prussian defense against the French in the 19th century and later used as a headquarters for the American military during WWII. This afternoon, sail through the spectacular







Flowers and fragrances fill Keukenhof Gardens



Explore Heidelberg Castle on an included excursion with wine tasting

Rhine Gorge. Pass countless medieval castles and vineyards lining the shores of this section of the river, with photo opportunities around every bend. See the infamous Lorelei statue and Pfalzgrafenstein Castle, built on an island in the middle of the river as a medieval toll station. **Meals: B, L, D**

**DiscoverMORE:** Moselle & Cochem (Reichsburg) Castle Visit (extra expense)

NOTE: you can choose either the included tour of Koblenz OR the DiscoverMORE option, as both tours operate at the same time.

#### DAY 6 – Mannheim / Heidelberg, Germany

Continue upstream to the town of Mannheim, located at the confluence of the Rhine and Neckar Rivers. From there, you have the opportunity to either visit the medieval town of Heidelberg including the impressive castle which overlooks the town, or take part on an active hike to Heidelberg Hill. **Meals: B, L, D**

**EmeraldACTIVE:** Active Hike to Heidelberg Hill

**EmeraldPLUS:** Wine Tasting in Heidelberg

#### DAY 7 – Kehl / Strasbourg, France

Once docked in Kehl, transfer by coach across the river to Strasbourg, the capital of the Alsace region in France. Your guided walking tour includes the Grande Île - the historical city center and UNESCO World Heritage Site. Known for its medieval black and white timber framed buildings, old tanning houses, baroque sandstones buildings, canals and river locks, the city's star attraction is the cathedral, dominating the main square. **Meals: B, L, D**

**EmeraldPLUS:** Guided Tour of Strasbourg

#### DAY 8 – Breisach

On today's adventure, visit a typical Black Forest village, full of charm, cuckoo clocks and other German specialties. Alternatively, take part on a guided hike through some of the Black Forest trails.

**Meals: B, L, D**

**EmeraldACTIVE:** Guided hike through some of the Black Forest trails

**EmeraldPLUS:** Black Forest Cake assembling presentation and tasting

#### DAY 9 – Basel to Lucerne, Switzerland

After breakfast, disembark the ship in Basel and begin your Swiss adventure. Depart by coach to Lucerne, a picturesque town sur-

rounded by mountains and meadows. An included walking tour highlights the city's landmark - the famous 14th-century Chapel Bridge. See the 17th-century Renaissance Town Hall and town squares, all set amongst the beautiful backdrop of the Swiss Alps. The remainder of the day is at leisure. **Meal: B**

#### DAY 10 – Optional Excursion: Mt. Pilatus

Your last day is left free of planned activities. Explore on your own, or join the optional excursion to Mt. Pilatus – a mountain overlooking Lucerne that offers a unique alpine experience! This evening, get together for an included dinner at the hotel. **Meals: B, D**

#### DAY 11 – Lucerne / USA

Bid 'auf wiedersehen' to Europe and return home with memories of life enriching experiences from your Swiss adventure and cruise along the Rhine River during tulip time. **Meal: B**

*Itinerary is subject to change.*



Cross the Reuss River via the historic Chapel Bridge in Lucerne, Switzerland

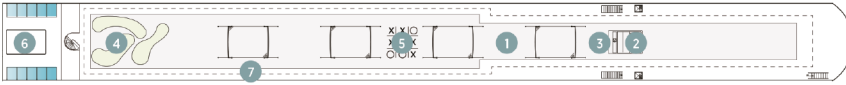


Seven nights accommodations aboard an

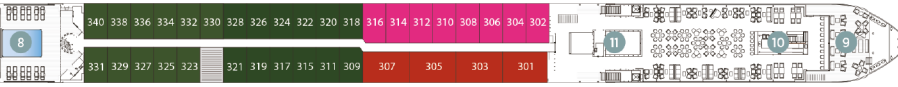
# Emerald Waterways Star-Ship

Built: 2014-2017 Speed: 15.5 mph Staterooms: 80 Suites: 12 Length: 443 ft. Crew: 47

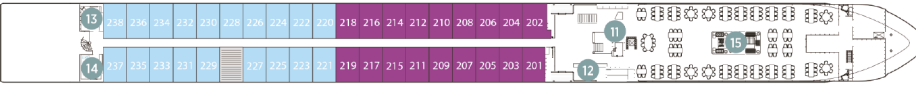
## SUN DECK



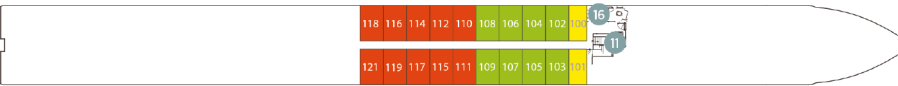
## HORIZON DECK



## VISTA DECK

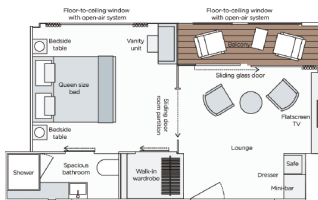


## RIVIERA DECK



## Public Areas and Ship Amenities

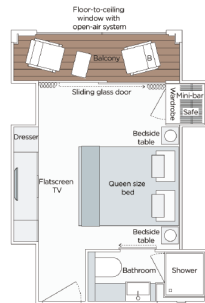
- 1 Sun Deck with Deck Chairs
- 2 Navigation Bridge
- 3 Sky Barbecue
- 4 Golf Putting Green
- 5 Games Area
- 6 Retractable Glass Roof
- 7 Walking Track
- 8 Daytime Pool & Bar / Evening Cinema
- 9 The Terrace
- 10 Horizon Bar and Lounge
- 11 Elevator
- 12 Reception
- 13 Wellness Area
- 14 Fitness Area
- 15 Reflections Restaurant
- 16 Hairdresser



### Owner's One-Bedroom Suite

315ft<sup>2</sup>

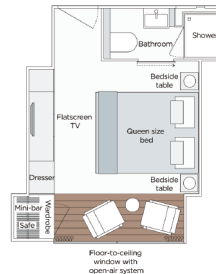
SA



### Grand Balcony Suite

210ft<sup>2</sup>

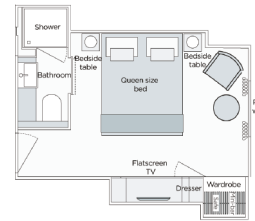
S



### Panorama Balcony Suite

180ft<sup>2</sup>

A B C



### Emerald Stateroom

162ft<sup>2</sup>

D E

## 2020 DEPARTURE DATE: April 5

CATEGORY	DECK	PER PERSON TWIN	SINGLE ROOM
D E Emerald Stateroom	Riviera	\$4,149	add \$2,199
B C Panorama Balcony Suite	Vista	\$4,799	add \$2,489
A Panorama Balcony Suite	Horizon	\$5,299	add \$2,749
S Grand Balcony Suite	Horizon	\$5,749	N/A
SA Owner's One-Bedroom Suite	Horizon	\$6,599	N/A

Please add \$100 per person for those that would like a local group pick up in Freeport with 10 or more travelers

**FREE AIRFARE out of Chicago (\$1,800) when reservations are made by May 31, 2019!**

**Beginning June 1 please call for details.**

Air itineraries may not be available until documents are received. Air seats are assigned by the airline for the entire group. Seat changes can only be attempted upon receipt of tickets and documents at which time availability may be limited. If specific seat assignments are vital to your reservation, we recommend individual air reservations rather than booking air with the group.

## TOUR ACTIVITY LEVEL



**A Travelers Protection Plan is highly recommended. Please contact Lindstrom Travel for more information.**

### Cancellation Charges Without Traveler's Protection

- 61 days and more – deposit amount
- 60 – 31 days – 20% of the tour cost
- 30 – 15 days – 30% of the tour cost
- 14 – 1 day prior – 40% of the tour cost
- Day of departure or early departure from tour – 100% of the tour cost
- No refund on unused portion

**Exclusions:** Mayflower Cruises & Tours reserves the right to alter its refund and cancellation policy when a substantial amount of cancellation or postponement of travel is attributable to: conditions resulting from an act of God, natural or man-made disaster, fire, government action, civil disorder, war, hostilities between nations, or unavailability of transportation through no fault of Mayflower Cruises & Tours.



## FOR RESERVATIONS OR INFORMATION CONTACT:

Winnebago-Boone Farm Bureau (815) 962-0653  
 Jo Daviess County Farm Bureau (815) 858-2235  
 Carroll County Farm Bureau (815) 244-3001  
 Kane County Farm Bureau (630) 584-8660  
 Lake County Farm Bureau (847) 223-6506  
 McHenry County Farm Bureau (815) 338-1520  
 Stephenson County Farm Bureau (815) 232-3186