

Introducing A New Vision

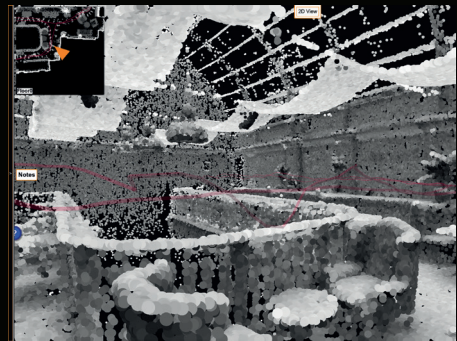
Fast

Simple

Mobile

Reliable

ZEB-CAM - Adding vision and context to your 3D scan data



Features

Compatibility Integrates seamlessly with existing **ZEB-REVO** hardware

Context **ZEB-CAM** adds contextual imagery to your scan data, making feature extraction simpler than ever

Imagery Optical flow technology allows accurate synchronisation of acquired imagery and point cloud data

What It Does

ZEB-CAM is the new add-on option for the **ZEB-REVO** that adds contextual imagery to your scan data, and is available for both new and existing **REVO** customers.

Using **GeoSLAM Desktop** local processing engine, contextual visual images can be viewed alongside 2D floorplans extracted directly from the scan data.

Click on an image of interest and you are automatically transported to that position within the scan data.

Click on a point of interest on the 2D floorplan and corresponding contextual images of that location are automatically displayed.



ZEB-CAM Specification

Camera Type	GoPro Session	Logging Medium	Internal SD card
Mode	Video	Power Supply	Internal Battery
Video Resolution	1440p	Battery Life	2 hours continuous use
Frames per Second	30	Image Syncing	Optical flow using integrated inertial sensor
Image Resolution	1920 x 1440	Connection	1.5m cable with multi pin LEMO connector
Field of View	Ultrawide (~120°x90°)	Software	Requires GeoSLAM Desktop 2017