

**SHOP TO LET**  
**Rent In Region of £22,000 pa**



**190 London Road**  
**Mitcham**  
**CR4 3LD**

*As an accredited agent we are members of*

**LOCATION:**

The property is situated in a prominent position on London Road, near Figges Marsh linking between Tooting/Streatham and Mitcham town centre.

The parade of consists of doctors surgery and builders yard with other retailers in the neighbouring parades such as off-licenses, peri peri chicken, solicitors and barbers etc.

**DESCRIPTION:**

Ground floor lock up shop in shell condition.

**USE CLAUSE:**

"E" Rely on your own search

**PROPERTY:**

Total GIA approx 650 Sqft.

**TENURE:**

The property is to be let on a new FRI lease/License with a rent in region of £22,000 pax.

**LEGAL COSTS:**

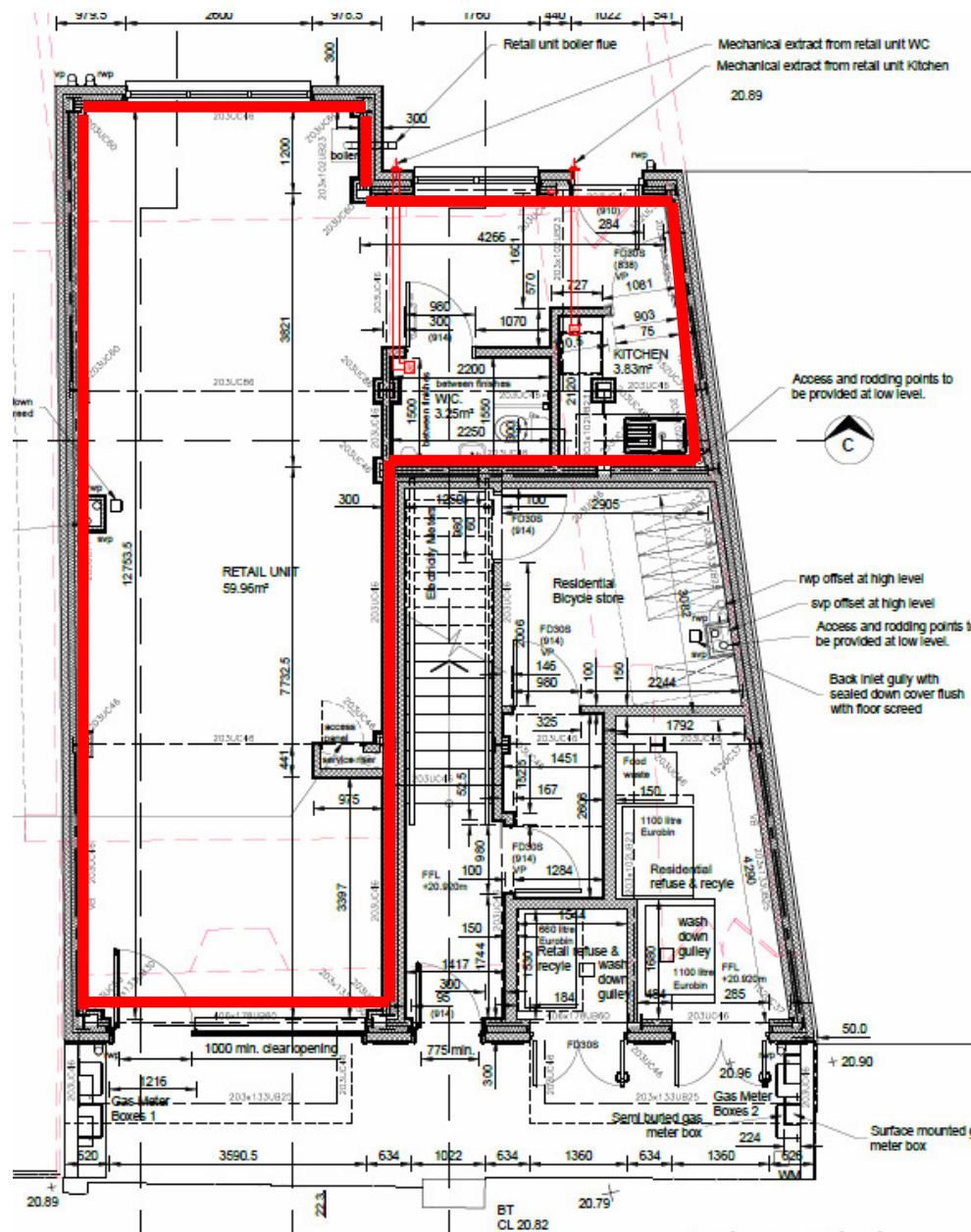
Both parties' legal costs are to be borne by the ingoing tenant.

**RATEABLE VALUE:** TBC

**EPC:** "TBC"

*As an accredited agent we are members of*

## FLOOR PLAN:



As an accredited agent we are members of



## PICTURES



*As an accredited agent we are members of*



*Note: Whilst every care is taken to ensure accuracy of these particulars no responsibility is taken for error, omission or miss-statement. No fixtures or fittings were tested. Intending purchasers/tenant should not rely on them as statements of representation of fact, but must satisfy themselves by inspection or otherwise as to their accuracy*

*As an accredited agent we are members of*

