



# BALUSTRADE SERIES RAILING

MADE  
*Simpler*



7000 Series Shown  
with Round Columns

## 5000 & 7000 SERIES RAILING

Committed To Excellence • Dedicated To Quality

[SUPERIORPLASTICPRODUCTS.COM](http://SUPERIORPLASTICPRODUCTS.COM)



# 5000 Balustrade Series

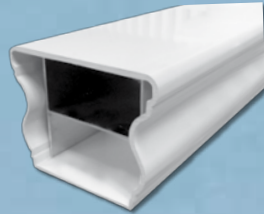
WHITE

TAN

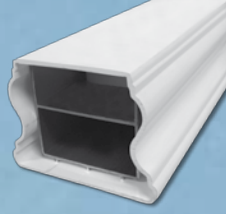
CLAY

- ✓ 36" & 42" Height Options
- ✓ Per Foot Custom Lengths
- ✓ 28° - 45° Step Rail Angles
- ✓ 6" Suggested Newel Post

Reinforced with Aluminum Channels



4½" W x 3⅜" H  
TOP RAIL



4½" W x 3⅜" H  
BOTTOM RAIL

**2 Baluster Choices**  
(A) 2-5/8" Vintage  
(B) 1-3/4" Denver



## Stately Proportions & Style • Perfect for Medium to Larger Installations:

The 5000 Series Railing is refined and classic - perfect where medium to larger railing installations are needed. It's strong and stylish appearance resembles that of fiberglass, stone, marble or polyurethane in a low-maintenance vinyl. Featuring a 4-1/2" wide flat-top railing and mid-sized balusters, the 5000 Series is the perfect solution for those medium to large sized projects. Available in white, tan and clay with two baluster options, this lightweight and easy to install system is the perfect design to complement your outdoor living area. *Engineered to Building Code Standards 42" H, up to 10' – AC 174 July 6, 2006 IBC R1 -R4 & 42" x 12' IRC (1 & 2 Family Dwellings)*



MADE  
Simpler



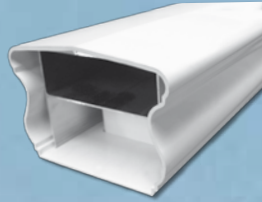
# 7000 Balustrade Series

WHITE

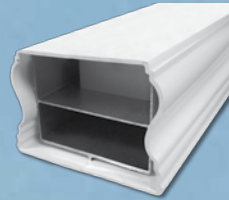
TAN

- ✓ 36" & 42" Height Options
- ✓ Per Foot Custom Lengths
- ✓ 28°- 45° Step Rail Angles
- ✓ 8" Suggested Newel Post
- ✓ Hidden Bracket Screws

Reinforced With Aluminum Channels



6½" W x 4½" H  
TOP RAIL



6½" W x 4½" H  
BOTTOM RAIL

Baluster Details  
3-3/4" Belmont



## Perfect for Larger Installations; Grand Estates, High-End Homes & Country Clubs:

The 7000 Series Railing is distinguished and sophisticated - perfect where larger railing installations are a must. It's strong and elegant appearance resembles that of fiberglass, stone, marble or polyurethane in a low-maintenance vinyl. Featuring a 6-1/2" wide railing and 3-3/4" balusters, the 7000 is the perfect solution for those grand-sized projects. Available in white and tan, the 7000 Series is the perfect design to withstand everything from large commercial projects to an over-sized residential porch or deck project.

*Engineered to Building Code Standards 42" high, up to 12'  
AC 174 July 5, 2005 – IBC R1-R4*

NOW FEATURES SCREW COVERS



Brackets and adaptors are available for straight, corner, step and 8" and 10" round column post installations.



Step railing sections include sleeve over trim cut to the angle of your pitch. All step sections are custom made. (custom straight lengths available).

MADE  
Simpler



Both railing systems are available in curved sections for custom radius applications. Ask about matching posts and columns.





7000 Series



7000 Series

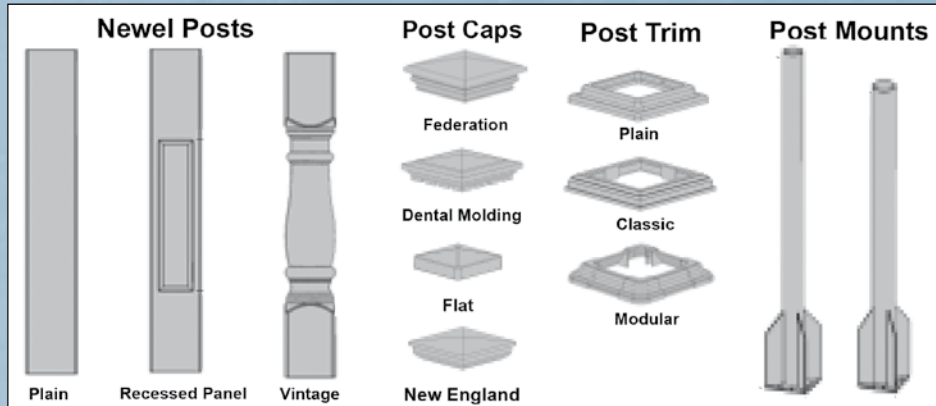


5000 Series

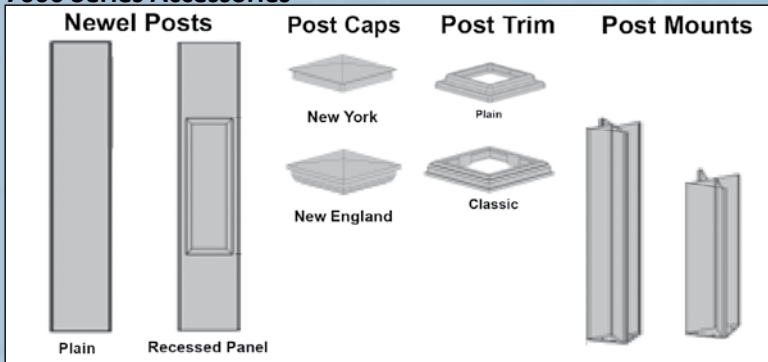


**COMPARE THE SIZE & STYLE DIFFERENCE**  
5000 RAIL ON THE LEFT & THE 7000 TO THE RIGHT

**5000 Series Accessories**



**7000 Series Accessories**



5000 Series



**DEALER**

SPPM0010 Vers 04-14