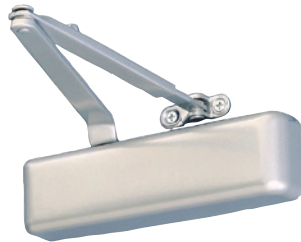


4030 SERIES CAST IRON UNIVERSAL CLOSER

BHMA
CLASSIFIED
GRADE 1



- A cast iron, universal closer designed specifically for doors in moderate traffic conditions
- Standard new 4030 series closer is shipped with forged regular arm, metal cover and wood/self-tapping machine screw pack
- Non-sized 4031 cylinder is adjustable from sizes 1 to 4 for exterior doors to 36" (914mm) and interior doors to 48" (1219mm)
- Closer mounts hinge side, top jamb, and parallel arm, on either right or left swinging doors
- Closer meets ADA requirements
- Cast Iron
- Forged steel main arm
- Heat treated steel pinion
- All weather fluid reduces seasonal adjustments
- UL and cUL listed for self-closing doors without hold-open
- ANSI Standard A156.4, grade 1 certified

MFG #	FINISH	EZ #
4031REG689	Aluminum	087914

4040SE SENTRONIC® CLOSERS

BHMA
CLASSIFIED
GRADE 1



- Provides single point hold-open for fire and smoke barrier doors
- Door is held open until current interruption releases the holding mechanism and the door closes
- Single lever track arm closer is specifically designed for interior doors
- Available 24VDC or 120VAC
- Non-sized for interior doors up to 4'0"
- Hold-open force is adjustable between 85° to 110° in approximately 3° increments (push side) and maximum to 95° (pull side)
- Momentary on/off switch board assembly for testing door release also provides over-voltage protection
- Functions as a full rack and pinion closer when hold-open is not engaged or current is interrupted
- Closer mounts on either push or pull side of the door
- Interfaces with fire alarm systems
- UL listed for smoke barrier or labeled fire doors
- cUL listed for self-closing doors without hold-open
- Tested and certified under ANSI Standard A156.15
- Conforms to life safety code, NFPA 101

MFG #	VOLTAGE	FINISH	EZ #
4040SE 120V 689	120VAC	Aluminum	073106
4040SE STD AL24V TBWMS	24VDC	Aluminum	072694

