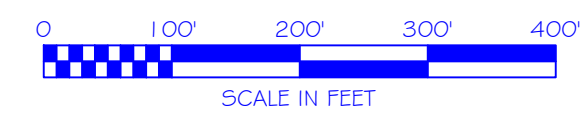
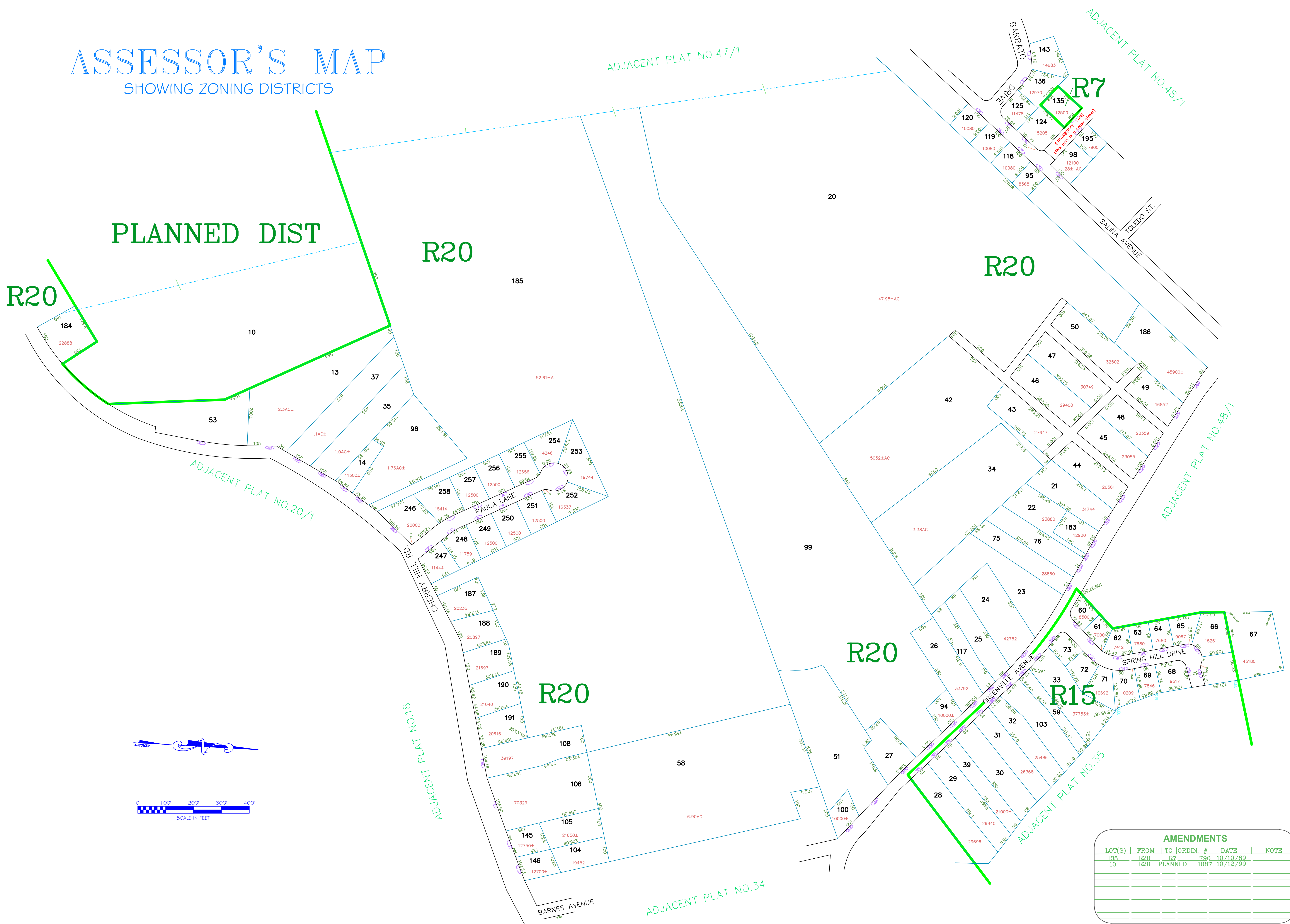


ASSESSOR'S MAP

SHOWING ZONING DISTRICTS



AMENDMENTS						
LOT(S)	FROM	TO	ORDIN. #	DATE	NOTE	
135	R20	R7	790	10/10/89	-	
10	R20	PLANNED	1087	10/12/99	-	

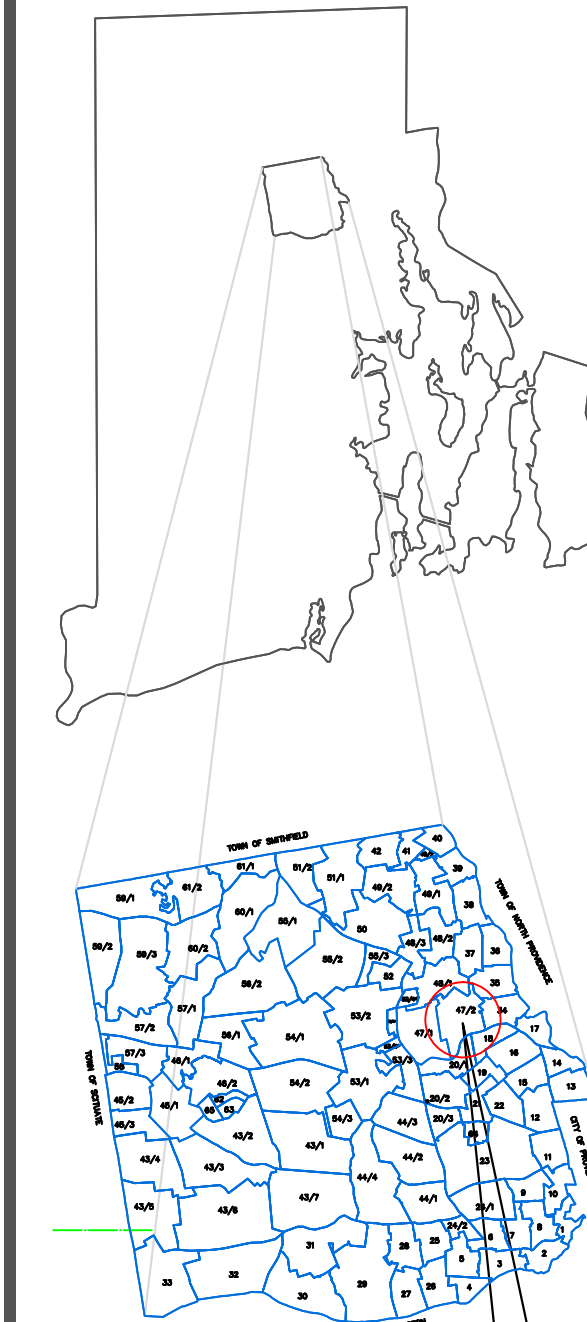
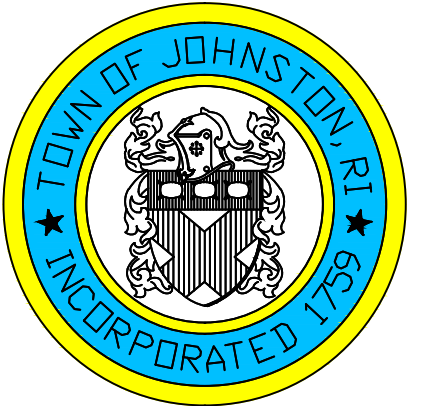
Assessor's Plat Number

47/2

STATE OF RHODE ISLAND
TOWN OF JOHNSTON

PROVIDENCE COUNTY
INCORPORATED 1759

ASSESSOR'S OFFICE
1385 HARTFORD AVENUE
JOHNSTON, RHODE ISLAND
02919



PLAT INDEX
AREA

Scale: 1:150

Revised By: Benjamin Ng

Last updated: January 04, 2016

Date printed: January 04, 2016

For copies of plat maps, please go to the DPW at 100 Irons Avenue Johnston Rhode Island. Thank you.

NOTE: This map was prepared for the use of the Town of Johnston for assessment and illustrative purposes only. It does not represent a survey of the premises. No liability is assumed as to the sufficiency or accuracy of the data delineated hereon.