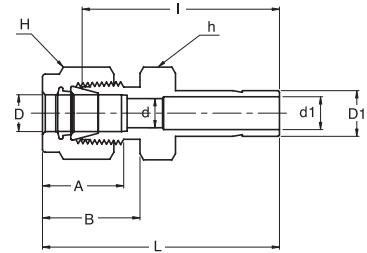
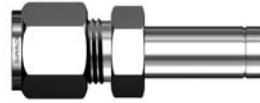


## SR Reducer

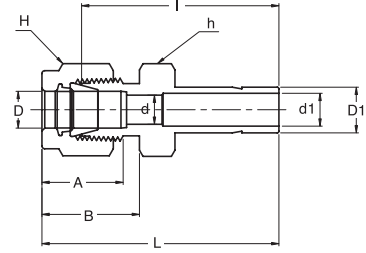
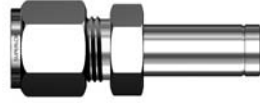


### Connects Fractional Tubes To Fractional **SUPERLOK** Port

Part No.	Tube O.D.		d Min	d1 Min	Width Across Flat		A	B	I	L
	D (inch)	D <sub>1</sub> (inch)			h (inch)	H (inch)				
SR 2 - 1	1/8	1/16	2.28	0.8	7/16	7/16	12.70	15.24	22.35	28.95
SR 2 - 2	1/8	1/8	2.28	2.1	7/16	7/16	12.70	15.24	26.92	33.52
SR 2 - 3	1/8	3/16	2.28	3.0	7/16	7/16	12.70	15.24	27.68	34.29
SR 2 - 4	1/8	1/16	2.28	4.4	7/16	7/16	12.70	15.24	29.46	36.06
SR 2 - 6	1/8	1/16	2.28	6.9	7/16	7/16	12.70	15.24	30.98	37.59
SR 2 - 8	1/8	1/2	2.28	9.4	9/16	7/16	12.70	15.24	37.59	44.19
SR 3 - 2	3/16	1/8	3.04	2.1	7/16	1/2	13.71	16.00	28.19	34.79
SR 3 - 4	3/16	1/4	3.04	4.4	7/16	1/2	13.71	16.00	30.48	37.08
SR 4 - 2	1/4	1/8	4.83	2.1	1/2	9/16	15.24	17.78	29.46	36.83
SR 4 - 3	1/4	3/16	4.83	3.0	1/2	9/16	15.24	17.78	30.22	37.59
SR 4 - 4	1/4	1/4	4.83	4.4	1/2	9/16	15.24	17.78	31.75	39.11
SR 4 - 5	1/4	5/16	4.83	5.6	1/2	9/16	15.24	17.78	32.51	39.87
SR 4 - 6	1/4	3/8	4.83	6.9	1/2	9/16	15.24	17.78	33.27	40.64
SR 4 - 8	1/4	1/2	4.83	9.4	9/16	9/16	15.24	17.78	38.86	46.22
SR 4 - 10	1/4	5/8	4.83	12.0	11/16	9/16	15.24	17.78	40.64	48.00
SR 4 - 12	1/4	3/4	4.83	14.8	13/16	9/16	15.24	17.78	41.40	47.75
SR 5 - 6	5/16	3/8	6.35	6.9	9/16	5/8	16.25	18.54	34.54	41.91
SR 5 - 8	5/16	1/2	6.35	9.4	9/16	5/8	16.25	18.54	40.13	47.49
SR 6 - 4	3/8	1/4	7.11	4.4	5/8	11/16	16.76	19.30	34.03	41.40
SR 6 - 6	3/8	3/8	7.11	6.9	5/8	11/16	16.76	19.30	35.81	43.18
SR 6 - 8	3/8	1/2	7.11	9.4	5/8	11/16	16.76	19.30	41.14	48.51
SR 6 - 10	3/8	5/8	7.11	12.0	11/16	11/16	16.76	19.30	42.92	50.29
SR 6 - 12	3/8	3/4	7.11	14.8	13/16	11/16	16.76	19.30	42.92	50.29
SR 8 - 4	1/2	1/4	10.41	4.4	13/16	7/8	22.86	21.84	34.79	44.95
SR 8 - 6	1/2	3/8	10.41	6.9	13/16	7/8	22.86	21.84	36.57	46.73
SR 8 - 8	1/2	1/2	10.41	9.4	13/16	7/8	22.86	21.84	42.16	52.32
SR 8 - 10	1/2	5/8	10.41	12.0	13/16	7/8	22.86	21.84	43.68	53.84
SR 8 - 12	1/2	3/4	10.41	14.8	13/16	7/8	22.86	21.84	43.68	53.84
SR 8 - 16	1/2	1	10.41	20.4	1-1/16	7/8	22.86	21.84	50.03	60.19
SR 10 - 12	5/8	3/4	12.70	14.8	15/16	1	24.38	21.84	44.45	54.61
SR 10 - 14	5/8	7/8	12.70	17.0	15/16	1	24.38	21.84	45.97	56.13
SR 10 - 16	5/8	1	12.70	20.4	1-1/16	1	24.38	21.84	50.80	60.96
SR 12 - 8	3/4	1/2	15.74	9.4	1-1/16	1-1/8	24.38	21.84	44.45	54.61
SR 12 - 16	3/4	1	15.74	20.4	1-1/16	1-1/8	24.38	21.84	52.32	62.48

\* Fractional Tube to Metric **SUPERLOK** port are available upon request

# SR Reducer

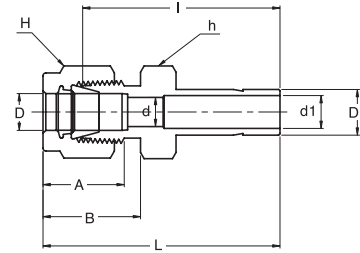
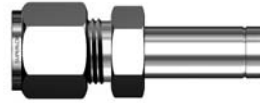


### Connects Metric Tubes To Metric SUPERLOK Port

Part No.	Tube O.D.		d Min	d1 Min	Width Across Flat		A	B	I	L
	D	D <sub>1</sub>			h	H				
SR 3M- 4M	3	4	2.4	2.2	12	12	12.9	15.3	28.4	35.0
SR 3M- 6M	3	6	2.4	4.1	12	12	12.9	15.3	29.5	36.1
SR 3M-10M	3	10	2.4	7.1	14	12	12.9	15.3	31.8	38.4
SR 4M- 6M	4	6	2.4	4.1	12	12	13.7	16.1	30.5	37.1
SR 6M- 3M	6	3	4.8	1.8	14	14	15.3	17.7	29.5	36.9
SR 6M- 8M	6	8	4.8	5.6	14	14	15.3	17.7	32.5	39.9
SR 6M-10M	6	10	4.8	7.1	14	14	15.3	17.7	33.3	40.7
SR 6M-12M	6	12	4.8	8.8	14	14	15.3	17.7	38.9	46.3
SR 8M- 6M	8	6	6.4	4.1	15	16	16.2	18.6	32.8	40.3
SR 8M-10M	8	10	6.4	7.1	15	16	16.2	18.6	34.5	42.0
SR 8M-12M	8	12	6.4	8.8	15	16	16.2	18.6	40.1	47.6
SR 10M- 6M	10	6	7.9	4.1	18	19	17.2	19.5	34.8	42.4
SR 10M- 8M	10	8	7.9	5.6	18	19	17.2	19.5	35.8	43.4
SR 10M-12M	10	12	7.9	8.8	18	19	17.2	19.5	42.2	49.8
SR 10M-15M	10	15	7.9	11.2	18	19	17.2	19.5	43.7	51.3
SR 10M-18M	10	18	7.9	13.9	22	19	17.2	19.5	43.7	51.3
SR 12M- 6M	12	6	9.5	4.1	22	22	22.8	22.0	34.8	44.9
SR 12M- 8M	12	8	9.5	5.6	22	22	22.8	22.0	35.8	45.9
SR 12M-10M	12	10	9.5	7.1	22	22	22.8	22.0	36.6	46.7
SR 12M-16M	12	16	9.5	12.0	22	22	22.8	22.0	43.7	53.8
SR 12M-18M	12	18	9.5	13.9	22	22	22.8	22.0	43.7	53.8
SR 12M-20M	12	20	9.5	15.5	22	22	22.8	22.0	46.0	56.1
SR 12M-22M	12	22	9.5	17.9	24	22	22.8	22.0	46.0	56.1
SR 12M-25M	12	25	9.5	19.9	27	22	22.8	22.0	52.3	62.4
SR 16M-12M	16	12	12.7	8.8	27	25	24.4	22.0	42.9	53.0
SR 18M-12M	18	12	15.1	8.8	27	30	24.4	22.0	44.5	54.6
SR 18M-16M	18	16	15.1	12.0	27	30	24.4	22.0	46.0	56.1
SR 18M-20M	18	20	15.1	15.5	27	30	24.4	22.0	47.5	57.6
SR 18M-22M	18	22	15.1	17.9	30	30	24.4	22.0	47.5	57.6
SR 18M-25M	18	25	15.1	19.9	30	30	24.4	22.0	52.3	62.4
SR 20M-16M	20	16	15.9	12.0	30	32	26.0	22.0	47.8	57.9
SR 20M-18M	20	18	15.9	13.9	30	32	26.0	22.0	47.8	57.9
SR 20M-22M	20	22	15.9	17.9	30	32	26.0	22.0	49.3	59.4
SR 20M-25M	20	25	15.9	19.9	30	32	26.0	22.0	54.1	64.2
SR 22M-18M	22	18	18.3	13.9	30	32	26.0	22.0	47.8	57.9
SR 22M-20M	22	20	18.3	15.5	30	32	26.0	22.0	49.3	59.4
SR 22M-25M	22	25	18.3	19.9	30	32	26.0	22.0	54.1	64.2
SR 25M-18M	25	18	21.8	13.9	35	38	31.3	26.5	50.8	63.1
SR 25M-20M	25	20	21.8	15.5	35	38	31.3	26.5	52.3	64.6

• All dimensions in millimeters unless specified as "inch". Dimension are for reference only, subject to change

**SR**  
**Reducer**



**Connects Metric Tubes To Fractional SUPERLOK Port**

Part No.	Tube O.D.		d Min	d1 Min	Width Across Flat		A	B	I	L
	D	D <sub>1</sub> (inch)			h	H				
SR 3M - 2	3	1/8	2.4	2.1	12	12	12.9	15.3	26.9	33.5
SR 3M - 4	3	1/4	2.4	4.4	12	12	12.9	15.3	29.5	36.1
SR 6M - 4	6	1/4	4.8	4.4	14	14	15.3	17.7	31.8	39.2
SR 6M - 5	6	5/16	4.8	5.6	14	14	15.3	17.7	32.5	39.9
SR 6M - 6	6	3/8	4.8	6.9	14	14	15.3	17.7	33.3	40.7
SR 6M - 8	6	1/2	4.8	9.4	14	14	15.3	17.7	38.9	46.3
SR 8M - 6	8	3/8	6.4	6.9	15	16	16.2	18.6	34.5	42.0
SR 8M - 8	8	1/2	6.4	9.4	15	16	16.2	18.6	40.1	47.6
SR 10M - 6	10	3/8	7.9	6.9	18	19	17.2	19.5	36.6	44.2
SR 10M - 8	10	1/2	7.9	9.4	18	19	17.2	19.5	42.2	49.8
SR 12M - 8	12	1/2	9.5	9.4	22	22	22.8	22.0	42.2	52.3
SR 12M - 12	12	3/4	9.5	14.8	22	22	22.8	22.0	43.7	53.8
SR 18M - 12	18	3/4	15.1	14.8	27	30	24.4	22.0	46.0	56.1
SR 18M - 16	18	1	15.1	20.4	27	30	24.4	22.0	52.3	62.4

• All dimensions in millimeters unless specified as "inch". Dimension are for reference only, subject to change