

VIEWLIGHT[®]
POWERED BY INNOVATION



Inami
Operation Microscopes
L-0990-A



MADE **IN** JAPAN



Viewlight USA - Inami Microscopes

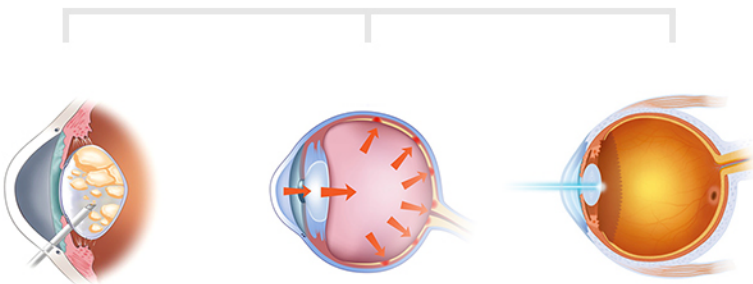
Inami surgical operation microscopes are ergonomically designed with user friendly features of magnification drum rotation, wide range of expandability and high quality optics.

Surgical Operation Main Microscope

- Model: Galilean-Type Binocular
- Magnification: Drum Type with 5 changes (4x, 6x, 10x, 16x, 25x)
- Objective Lens: F=200mm
- Eyepiece: Fields of view at 12.5x - 17mm diameter
- Light Source: Halogen lamp Bulb 12V light
- Filters: Retina protection, red-free, and bulb color.



Inami



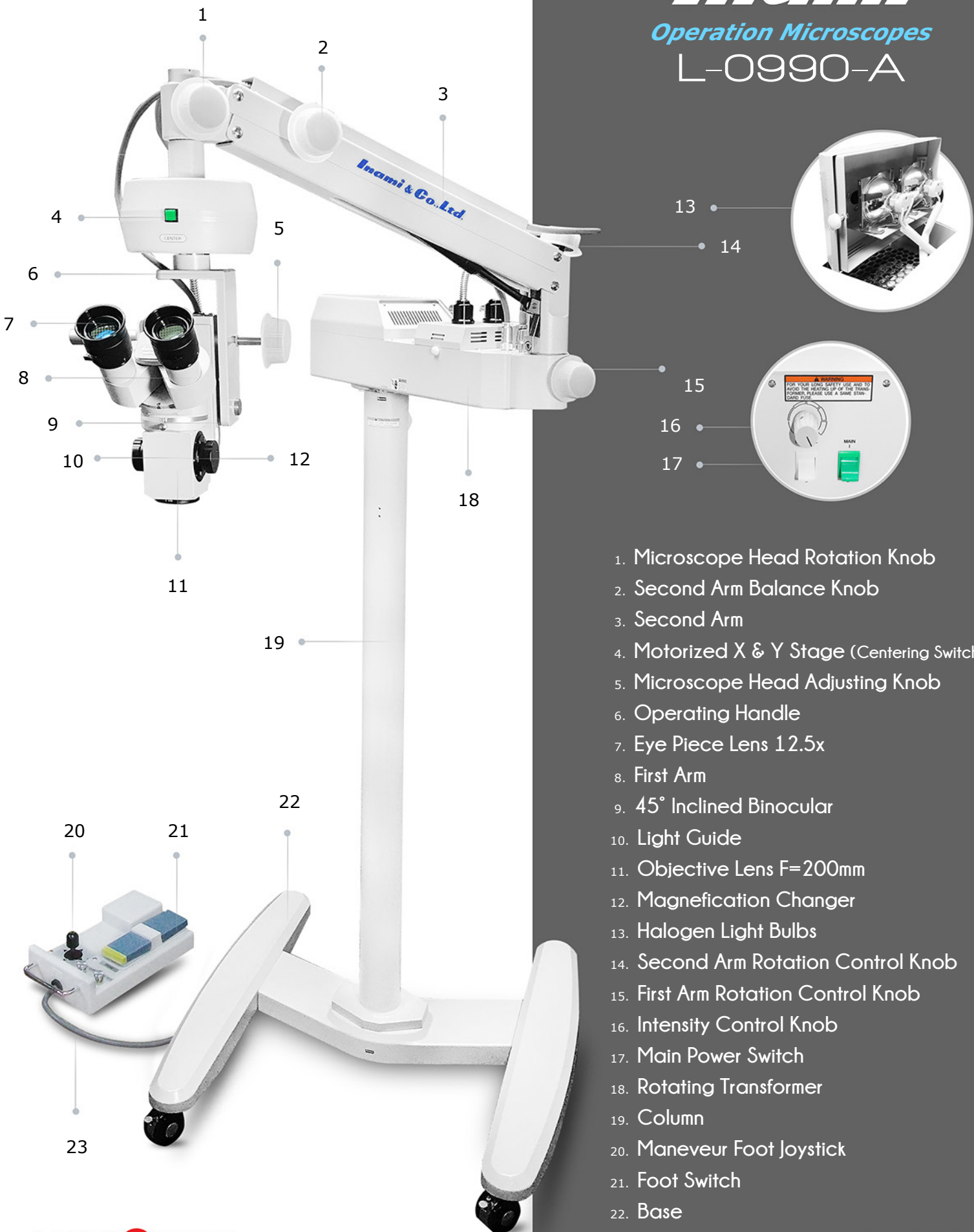
Quality Meets Affordability Best Prices in the Market

- Coaxial Illumination
- Suitable for all anterior and posterior surgery
- 5 magnification drum rotation
- Brilliant red reflex view for phaco & cataract surgery
- Motorized X & Y centering stage
- Illumination filters microscopy
- 15V halogen lamp light source
- Continuous light intensity controller
- Foot remote controller

Inami

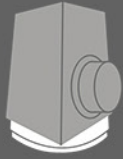
Operation Microscopes

L-0990-A



1. Microscope Head Rotation Knob
2. Second Arm Balance Knob
3. Second Arm
4. Motorized X & Y Stage (Centering Switch)
5. Microscope Head Adjusting Knob
6. Operating Handle
7. Eye Piece Lens 12.5x
8. First Arm
9. 45° Inclined Binocular
10. Light Guide
11. Objective Lens F=200mm
12. Magnification Changer
13. Halogen Light Bulbs
14. Second Arm Rotation Control Knob
15. First Arm Rotation Control Knob
16. Intensity Control Knob
17. Main Power Switch
18. Rotating Transformer
19. Column
20. Maneuver Foot Joystick
21. Foot Switch
22. Base
23. Connecting Cord

MADE  JAPAN



5 STEPS MAG

4x, 6x, 10x, 16x, 25x

Objective Lens	F=200mm				
Total Magnification (x)	4	6	10	16	25
Field of View (mm)	55	35.5	22	13.5	8.5
Brightness (max)	85,00 Lux (5)				
Coaxial Illumination Field (mm)	33				

Objective Lens	F=175mm				
Total Magnification (x)	4.6	7	11.5	18.5	29
Field of View (mm)	53	35	22	13.5	8.5



Illumination Filters

Microscopy

Inami offers the state of the art technology providing a built-in illumination microscope filters (Cobalt, Blue, Red free, heat absorbing, 1/2ND).



Inclination Angles

Adjustable Binocular

L-0990-A features an adjustable inclined binocular which enables surgeons to operate with comfort and efficiency specially during retinal surgery.



X & Y Centering Device

L-0990-A features a motorized X & Y stage, (horizontal arm 400mm long with 320° rotation) with a solid and stable structure designed to achieve the highest accuracy for all or any microscope arm positioning with minimal effort.



Inami

Four Leg Base Mechanism

All Inami microscopes are built with a solid heavy weight four leg base and a two locking fixed mechanism to ensure a firm and steady position.



Foot Switch Operations

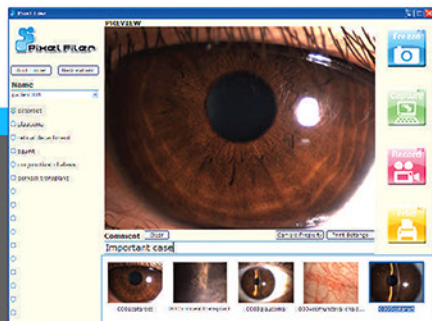
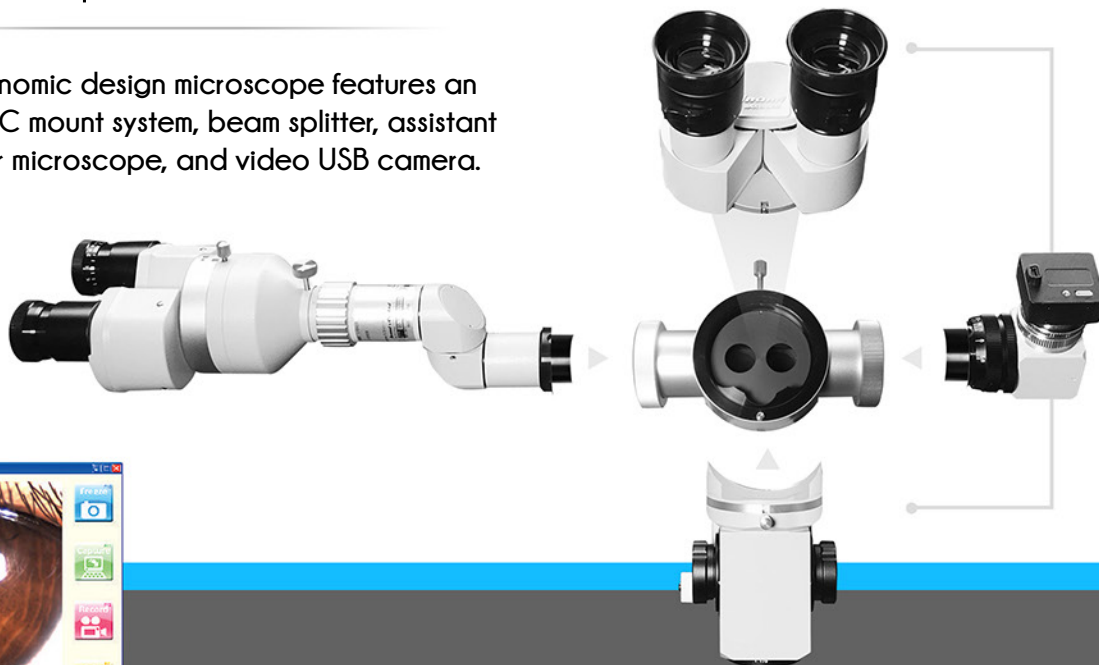
The L-0990-A microscopes offers a user friendly foot switch pedal which controls and adjusts the coaxial illumination, and motorized micro-focusing movement of the X & Y system.



Microscopes Accessories



This ergonomic design microscope features an optional C mount system, beam splitter, assistant binocular microscope, and video USB camera.



- Resolution
- Frame rate
- Speed
- Cost performance



Digital Video Camera

1.

Inami microscopes offers an optional USB digital camera, with a unique software where you can store and create your own patient data base to capture high quality digital photos and videos.



Assistant Binocular
Microscope

2.

The optional high quality assistant binocular coaxial microscope offers an apochromatic optics which allows the observer to magnify and visualize the red flex with easy and control.



Beam Splitter
Devices

3.

All operation microscopes features an optional beam splitter that can be easily assembled and it allows you to attached many other Inami optional accessories.



Video Camera Adaptor
C-Mount F=70mm

4.

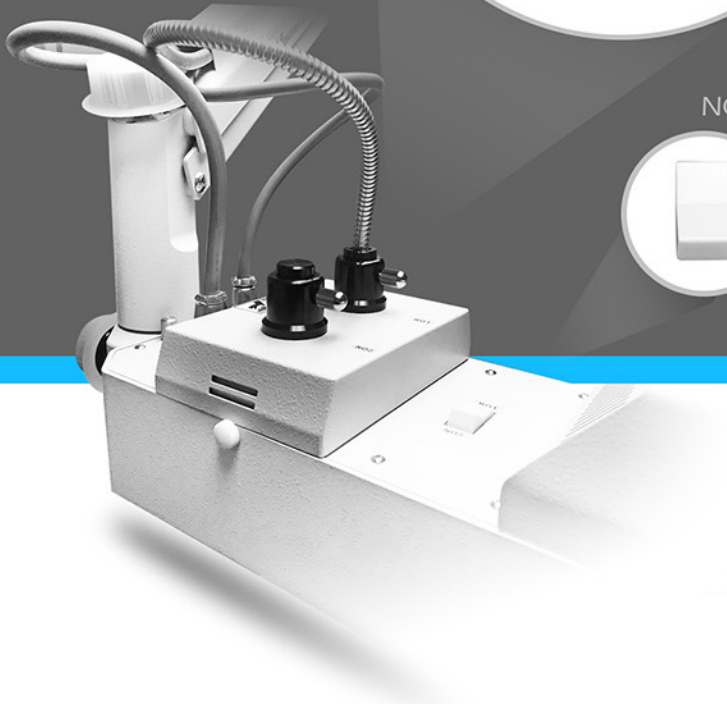
This optional video digital camera adaptor is designed for a easy and quick assembly access while adding the USB digital camera.



Light Sources

Halogen Bulbs

L-0990-A microscopes main illuminator employs a two set of bright and cool 15V 150W halogen lamps bulbs with a max intensity 110,000 Lux. One is used for actual illumination and the other is a spare light source that can be switched in case of emergency.



Voltage Selectors

Illumination System

Inami microscopes offers a convenient illuminator control lamp house where you can access and change settings fairly quickly. Also features a two illumination system where you can independently switch them just in case of a lamp failure while in the middle of a delicate operation.



Inami

MADE  JAPAN



Operation Microscopes

Product Specifications

L-0990-A

Microscope

Microscope Head Type	Galilean Type Microscope
Magnification Changer	5 Steps by drum rotation
Eye Piece	12.5x with helicoidal diopter adjustments
Magnification Ratio	3.2x, 4.8x, 8x, 12.8x, 20x
Field of View	51~ 8mm
Pupillary Adjustment	50 ~ 75mm
Objective Lens	F=175mm
Diopter Adjustment	-6D - ±5D

Illumination

Filters	Cobalt, Red free, Heat absorption, 1/2ND
Light Source	Halogen: Lamp Bulb 12V 150W (LO16H1)
Max Intensity	110,000 Lux

Focal Adjustments

Type	Motorised X & Z stages
Adjustable Distance	40mm
Focusing Speed	1.3mm / sec

Head Inclination

Head Inclination Angle	0 ~ 30°
Head Swing Angle	Left to Right -30° ±30° Left to Right -40° ±40°

Notes

Weight	67kgs
Dimensions	1090mm x 470mm
Input Voltage	AC100 ~ 240V
Power Consumption	50VA