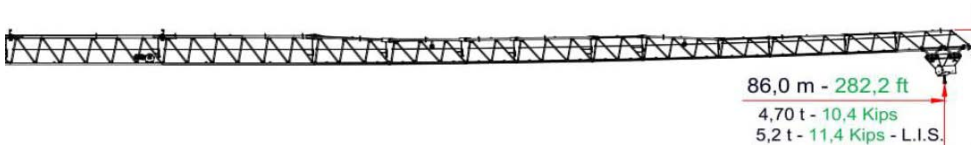


SCE 750 40t

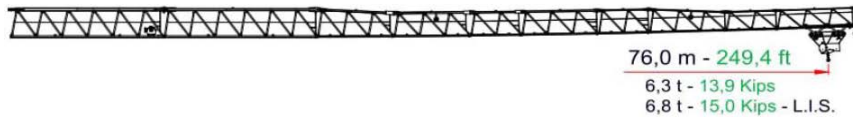
Capacity and Loading Sheet



RADIUS & CAPACITY (m)	MAX LOAD	DIST (m)	30	35	40	45	50	55	60	65	70	75	80	85	86
(2 PART LINE, m/ton)	20	28	19,20	16,08	13,75	11,96	10,5	9,35	8,38	7,56	6,86	6,25	5,72	5,26	5,17
(4 PART LINE, m/ton)	40	15	17,35	14,21	11,86	10,05	8,61	7,43	6,45	5,62	4,92	4,31	3,77	3,30	
RADIUS & CAPACITY (ft)	MAX LOAD	DIST (ft)	98.4	114.8	131.2	147.6	164.0	180.4	196.8	213.3	229.7	246.1	262.5	278.9	282.2
(2 PART LINE, lbs)	44,080	91.9	42,330	35,450	30,320	26,360	23,200	20,620	18,480	16,670	15,130	13,790	12,620	11,590	11,400
(4 PART LINE, lbs)	88,160	49.2	38,260	31,320	26,150	22,160	18,970	16,380	14,220	12,400	10,840	9,490	8,310	7,280	



RADIUS & CAPACITY (m)	MAX LOAD	DIST (m)	30	35	40	45	50	55	60	65	70	75	80	82
(2 PART LINE, m/ton)	20	30	20,00	17,3	14,8	12,9	11,4	10,1	9,1	8,2	7,5	6,8	6,3	6,05
(4 PART LINE, m/ton)	40	15	18,75	15,4	12,9	10,97	9,43	8,18	7,14	6,26	5,51	4,85	4,29	
RADIUS & CAPACITY (ft)	MAX LOAD	DIST (ft)	98.4	114.8	131.2	147.6	164.0	180.4	196.8	213.3	229.7	246.1	262.5	269.1
(2 PART LINE, lbs)	44,080	98.4	44,090	38,170	32,700	28,460	25,090	22,340	20,050	18,120	16,470	15,04	13,790	13,340
(4 PART LINE, lbs)	88,160	49.2	41,330	33,950	28,450	24,190	20,800	18,030	15,740	13,800	12,140	10,700	9,450	



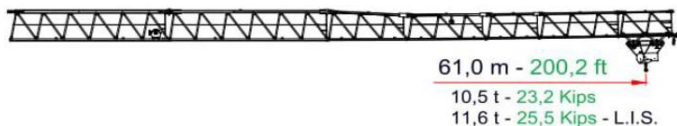
RADIUS & CAPACITY (m)	MAX LOAD	DIST (m)	30	35	40	45	50	55	60	65	70	75	76
(2 PART LINE, m/ton)	20	32	20,00	17,58	15,06	13,12	11,57	10,30	9,25	8,36	7,60	6,95	6,83
(4 PART LINE, m/ton)	40	16	19,31	15,88	13,32	11,34	9,77	8,48	7,42	6,51	5,74	5,08	
RADIUS & CAPACITY (ft)	MAX LOAD	DIST (ft)	98.4	114.8	131.2	147.6	164.0	180.4	196.8	213.3	229.7	246.1	249.4
(2 PART LINE, lbs)	44,080	105	44,090	38,760	33,210	28,920	25,500	22,710	20,390	18,430	16,760	15,310	15,050
(4 PART LINE, lbs)	88,160	52.5	42,570	35,010	29,370	25,010	21,540	18,700	16,350	14,360	12,660	11,190	



RADIUS & CAPACITY (m)	MAX LOAD	DIST (m)	30	35	40	45	50	55	60	65	70	71
(2 PART LINE, m/ton)	20	34	20,00	19,23	16,50	14,39	12,71	11,34	10,20	9,24	8,42	8,27
(4 PART LINE, m/ton)	40	17	21,28	17,56	14,79	12,64	10,93	9,54	8,38	7,41	6,57	
RADIUS & CAPACITY (ft)	MAX LOAD	DIST (ft)	98.4	114.8	131.2	147.6	164.0	180.4	196.8	213.3	229.7	233.0
(2 PART LINE, lbs)	44,080	111.5	44,090	42,400	36,380	31,730	28,030	25,010	22,490	20,370	18,560	18,230
(4 PART LINE, lbs)	88,160	55.8	46,900	38,700	32,600	27,870	24,110	21,040	18,490	16,330	14,490	



RADIUS & CAPACITY (m)	MAX LOAD	DIST (m)	30	35	40	45	50	55	60	65	66
(2 PART LINE, m/ton)	20	35	20,00	19,79	16,99	14,83	13,10	11,70	10,53	9,54	9,36
(4 PART LINE, m/ton)	40	18	21,91	18,10	15,26	13,06	11,31	9,88	8,70	7,70	
RADIUS & CAPACITY (ft)	MAX LOAD	DIST (ft)	98.4	114.8	131.2	147.6	164.0	180.4	196.8	213.2	216.6
(2 PART LINE, lbs)	44,080	114.8	44,090	43,630	37,460	32,690	28,880	25,780	23,210	21,030	19,990
(4 PART LINE, lbs)	88,160	59.1	48,300	39,900	33,640	28,790	24,940	21,790	19,170	16,970	



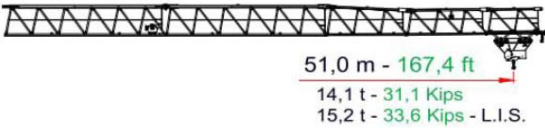
RADIUS & CAPACITY (m)	MAX LOAD	DIST (m)	30	35	40	45	50	55	60	61
(2 PART LINE, m/ton)	20	38	20,00	20,00	18,94	16,55	14,65	13,10	11,81	11,58
(4 PART LINE, m/ton)	40	19	24,35	20,18	17,07	14,67	12,8	11,2	9,90	
RADIUS & CAPACITY (ft)	MAX LOAD	DIST (ft)	98.4	114.8	131.2	147.6	164.0	180.4	196.8	200.2
(2 PART LINE, lbs)	44,080	124.7	44,090	44,090	41,750	36,490	32,300	28,890	26,050	25,540
(4 PART LINE, lbs)	88,160	62.3	53,680	44,490	37,640	32,350	28,130	24,690	21,830	

SCE 750

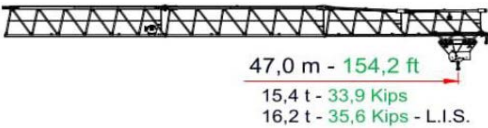
Capacity and Loading Sheet



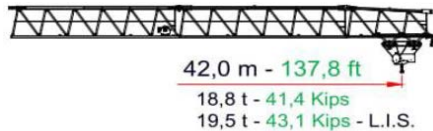
RADIUS & CAPACITY (m)	MAX LOAD	DIST (m)	30	35	40	45	50	55	57
(2 PART LINE, m/ton)	20	39	20,00	20,00	19,86	17,37	15,38	13,77	13,20
(4 PART LINE, m/ton)	40	20	25,54	21,20	17,96	15,46	13,47	11,84	
RADIUS & CAPACITY (ft)	MAX LOAD	DIST (ft)	98,4	114,8	131,2	147,6	164,0	180,4	187,1
(2 PART LINE, lbs)	44,080	128	44,090	44,090	43,770	38,290	33,910	30,350	29,100
(4 PART LINE, lbs)	88,160	65.6	56,310	46,730	39,600	34,080	29,690	26,100	



RADIUS & CAPACITY (m)	MAX LOAD	DIST (m)	30	35	40	45	50	51
(2 PART LINE, m/ton)	20	40	20,00	20,00	20,00	17,61	15,60	15,25
(4 PART LINE, m/ton)	40	19	25,96	21,56	18,28	15,74	13,72	
RADIUS & CAPACITY (ft)	MAX LOAD	DIST (ft)	98,4	114,8	131,2	147,6	164,0	167,4
(2 PART LINE, lbs)	44,080	131.2	44,090	44,090	44,090	38,820	34,400	33,620
(4 PART LINE, lbs)	88,160	62.3	57,240	47,530	40,290	34,700	30,240	



RADIUS & CAPACITY (m)	MAX LOAD	DIST (m)	30	35	40	45	47
(2 PART LINE, m/ton)	20	39	20,00	20,00	19,44	17,00	16,17
(4 PART LINE, m/ton)	40	20	25,04	20,77	17,59	15,13	
RADIUS & CAPACITY (ft)	MAX LOAD	DIST (ft)	98,4	114,8	131,2	147,6	154,2
(2 PART LINE, lbs)	44,080	128	44,090	44,090	42,860	37,480	35,650
(4 PART LINE, lbs)	88,160	65.6	55,200	45,780	38,770	33,350	



RADIUS & CAPACITY (m)	MAX LOAD	DIST (m)	30	35	40	42
(2 PART LINE, m/ton)	20	41	20,00	20,00	20,00	19,55
(4 PART LINE, m/ton)	40	20	26,34	21,88	18,56	
RADIUS & CAPACITY (ft)	MAX LOAD	DIST (ft)	98,4	114,8	131,2	137,8
(2 PART LINE, lbs)	44,080	134.5	44,090	44,090	44,090	43,100
(4 PART LINE, lbs)	88,160	65.6	58,070	48,230	40,910	