

*impact* 

*enterprise* 

# Packaging Design and Manufacturing Software





Impact CAD for designers:  
The industry's most powerful tool  
for structural design



Created by packaging designers for packaging designers. Impact CAD covers everything you need through one integrated product. Everything has been designed to make things fast, simple and accurate.

Impact has been evolving since 1988, based on feedback from our customers and our own experience of packaging design. We've developed the features you want to make packaging design simple and cost-effective. There's simply nothing else out there that compares.

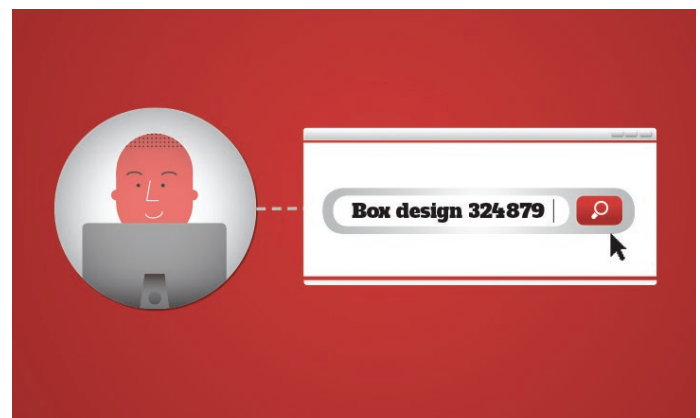
### Ideal for designers

Initial design is streamlined and made easier through a set of fully interactive drawing tools that accurately reflect the end product. Whether starting from scratch or importing existing work, results can be achieved with speed and guaranteed for accuracy. It's even possible to get instant feedback on rule length, area, and weight and waste calculations to make sure you stay on track.

### Library of designs

You'll be able to access a large library of existing best practice packaging designs that give you a flying start to any project.

The designs are simple to customise, bespoke to the materials you use and cover every industry standard. Your time is freed up so you can use your skills to create something unique.



## Impact CAD for designers

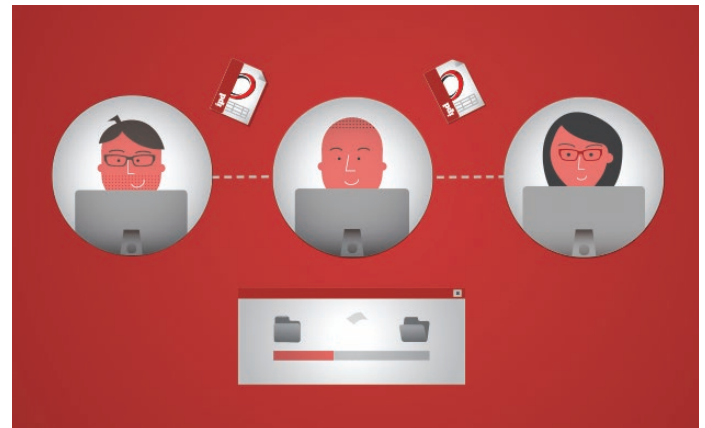


### Faster approvals

Impact helps you get buy-in for your designs through easy soft proofing that allows you to create virtual 3D samples and animated prototypes that can be shared with the customer who can then see exactly how everything fits together. The software is fully compatible with your plotters providing straightforward production of physical samples.

### Work as a team

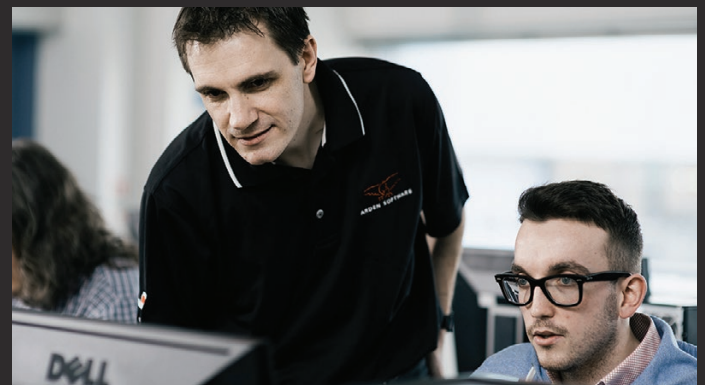
Impact allows you to share designs with your team, storing all the work in one, easily accessible place. If you have a multi-site operation then our supporting suite of software can extend this team-working function to a national and global level. Language is no barrier and users can work in the units native to their home territory



## Features & Benefits

### Features

- Interactive drawing toolset
- Extensive library of reusable parametric designs styles including corrugated (FEFCO), folding carton (ECMA), point of sale displays, rigid paper composite and CD/DVD wallets
- Drag and drop design components
- Layout and nesting capabilities for efficient design arrangement and accurate estimating
- Powerful tools to proof or design around artwork
- Advanced 3D modelling and animation tools for fast prototyping and enhanced innovation in presentation
- Built around a powerful and fully customisable design database to help manage and locate anything you create or edit
- Able to generate design reports to allow you to effortlessly share branded technical drawings with your customers through a single click
- Advanced tools to import and clean a wide range of other CAD and non-CAD drawings, ready for production
- A fully customisable interface and user-programmable tools
- Open and flexible machine drivers that can communicate with anything from desktop plotters to lasers and engraving machines
- Supports all industry standard databases including SQL, Oracle and MySQL



### Benefits

- Designed by people who truly understand your business
- Compatibility with your machines and ways of working
- Elimination of errors
- Greater consistency
- Huge time savings for repetitive and complex work
- Scalable and bespoke: you choose the features you need and the software can evolve with your business

Created by packaging designers for packaging designers. Impact CAD covers everything you need through one integrated product. Everything has been designed to make things fast, simple and accurate.





# Impact CAD for die-makers

We have used our in-depth industry knowledge to make Impact CAD the world's leading software package for die-makers. From customisable templates to pinpoint manufacturing, the software is shaped around your business and way of working.

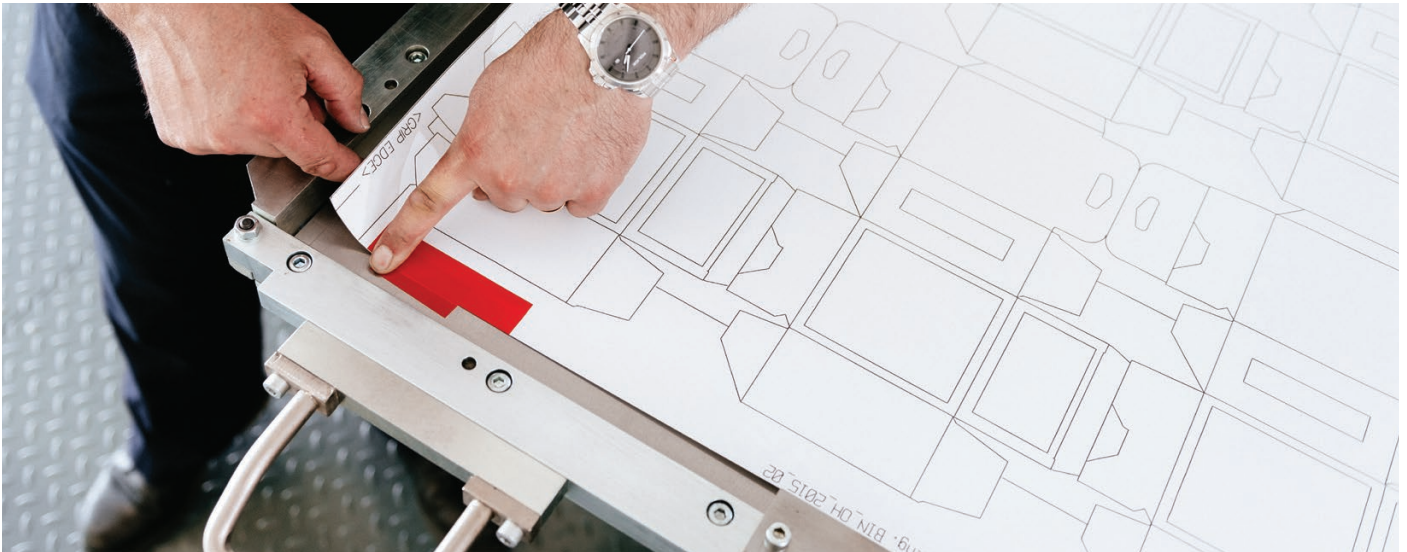
## Features

- Built around a powerful and fully customisable design database to help manage and locate anything you create or edit
- Advanced tools to import and clean a wide range of other CAD and non-CAD drawings, ready for production
- A fully customisable interface and user-programmable tools make this the ultimate packaging design productivity suite
- The ability to automatically embed rules and specifications from you and your customers
- Automatic tool registration, collision checking and alignment across a production job means quality control is built-in from the start

## Benefits

- Designed by people who truly understand your business
- Compatibility with your machines and ways of working
- Elimination of errors
- Greater consistency
- Huge time savings for repetitive and complex work
- Scalable and bespoke: you choose the features you need and the software can evolve with your business

# Impact CAD for die-makers



Our history of die-making has given us a deep insight into the process and inspired us to develop integrated software that meets every challenge you face and allows you to create effective tooling using your existing equipment.

## Personalised manufacturing

Our experience of tool making is built into the software and creating dies is made simple and accurate. We understand that every machine is different and Impact will adapt to your specific requirements, meaning packaging is perfect every time without the need to purchase new equipment

## Ideal for tooling

Our software leads you through a series of logical steps to create the perfect die every time. Dynamic feedback, in-built preferences and automated process all make your life easier and your customers happier.

## No need to reinvent the wheel

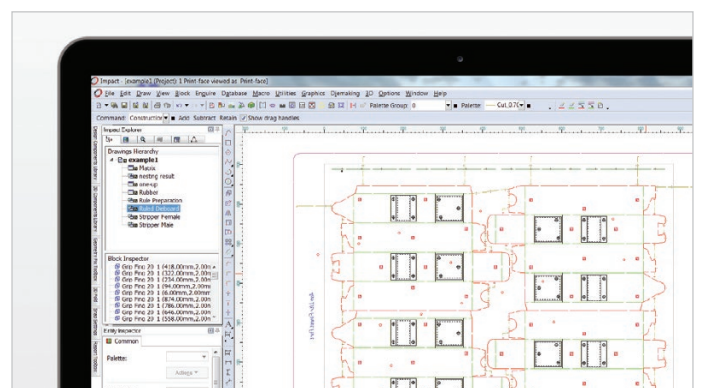
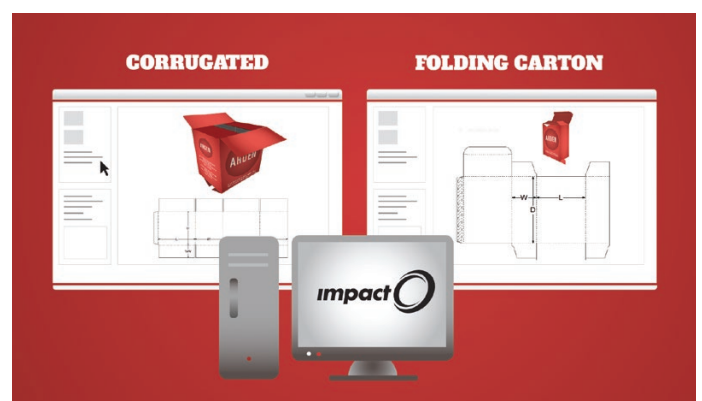
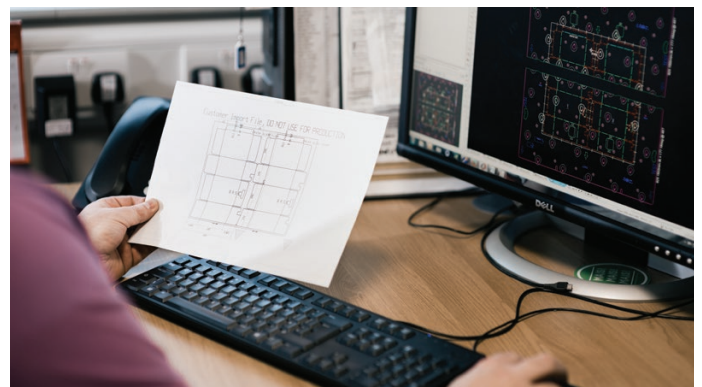
You will be able to access our comprehensive library of best practice industry standard tooling settings. These settings can be easily adapted to yours and your customers' own defaults and cover all the styles and materials you will encounter. Customer specifications can then be stored and reused automatically, providing maximum productivity and guaranteed quality control.

## Creating efficiency

We also understand your need for efficiency and Impact allows you to calculate one, or multiple, interlocking nesting patterns simultaneously to ensure maximum on-press efficiency and minimum material waste.

## Scalable to your need

Our suite of software will allow you to use Impact across multiple sites, standardising settings and specifications and sharing work with a wider team. Customers can be brought into the tooling process, making you a company that is transparent and easier to work with.



Our history of die-making has given us a deep insight into the process and inspired us to develop integrated software that meets every challenge you face, whether you're a die-maker or a designer.







Enterprise allows you to share work instantly across multiple locations. From drawing board to machine, our software provides colleagues with secure access to your latest designs, driving collaboration and increasing speed and efficiency.

As your business grows you often need to work with multiple parties based in different locations across the world. Enterprise is a secure, cloud-based package that stores all of your work-in-progress in one place, available at the touch of a button to interested parties.



### Ideal for teams

Designers and manufacturers work from the same set of templates and settings, avoiding duplication of effort. The option to reuse existing designs and production tooling stored by Enterprise eliminates the need to start from scratch, saving you time and money. Version control is also made simple when the entire team is working from the same files.

### No downtime

You enjoy all the advantages of a local database but on a worldwide level. Data is never lost and security is guaranteed. Even if web access is not available, information will still be accessible from a local server meaning work never comes to a halt.

### Customised packages

Enterprise is fully customisable to your business and suitable whether you have one location or two hundred. The package can be scaled up or down as required.

## Features & Benefits

### Features

- Business-wide project searching and sharing to a central database
- Automated project version control
- Secure site-to-central communications
- Assured performance and fault tolerance
- Mirroring and backup of designs, settings and templates everywhere

### Benefits

- Time and cost savings through efficient project management and re-use of designs
- Genuine and enhanced collaboration between global teams
- Maximum use of global design resources
- Continuity guaranteed even during internet short-outs
- Everything in one place, providing clarity and inspiring progress
- Centralised system management tools for achieving standardised design practises and tool settings
- An opportunity to integrate CAD with other business systems from a single, central location

## Offering you the full support you need

### Installation and Setup

Arden Software and its trusted resellers want you to succeed, so we work closely with our customers to make the installation and set-up process as painless as possible. Have a plotter or existing workflow you need to connect to, no problem, we have the combined skills and experience to maximise your investment and get you working as quickly as possible.

### Training

Arden Software specialises in training packaging professionals in the use of Impact. Courses cover a wide range of industry-specific topics and guarantee that trainees return to the workplace better equipped to exploit Impact's extensive capabilities, and fulfil the business objectives of their employer.

### Software Maintenance Contracts

Arden Software provides full cover for Impact through an optional software maintenance contract (SMC). An Impact SMC includes a range of entitlements, such as version upgrades and updates, as well as discounts against the purchase of professional services and consultancy.

### Consultancy & Integration

Many users choose to integrate Impact with home grown or third party business management systems to achieve a best-practice environment, eliminate data entry, guarantee quality of data, and optimise the return of their investment. Arden Software has many years of experience in delivery successful and seamless integration with many external vendor business management systems such as SAP, AS400, Witron and Microsoft Dynamics AX.



## Which Impact bundle is right for you?

Use this table to help identify which of the Impact bundles contains the features you need.

	Designer Essentials	Designer Standard	Designer Professional	Diemaker Standard	Diemaker Professional	Rubberer	Estimator	Controller
I want to create and edit my own packaging designs	✓	✓	✓	✓	✓			
I want to create packaging designs using a library of reusable styles	✓	✓	✓	✓	✓		✓	
I want a database to help me manage my projects and documents	✓	✓	✓	✓	✓	✓	✓	✓
I want to produce reports and drawing specifications	✓	✓	✓	✓	✓	✓	✓	✓
I want to import and place artwork on my packaging designs		✓	✓					
I want to create 3D prototypes displaying artwork		✓	✓					
I want to create 3D prototypes displaying realistic effects and finishes			✓					
I want to animate my 3D prototypes			✓					
I want to import 3D objects in a range of industry standard formats*			✓					
I want to create custom 3D product shapes to enhance my presentations			✓					
I want to create packaging designs shaped around placed artwork		✓	✓	✓	✓			
I want to create quick nested layouts		✓	✓	✓	✓		✓	
I want to create advanced nested layouts			✓	✓	✓		✓	
I want to create die-boards				✓	✓			
I want to create advanced manufacturing tooling (e.g. strippers, blankers etc)					✓			
I want to create and nest ejection rubber parts					✓	✓		
I want to exchange drawing data in a range of industry standard formats	✓	✓	✓	✓	✓	✓	✓	✓
I want to exchange drawing data in an extended range of industry standard formats	✓	✓	✓	✓	✓		✓	
I want to control my machinery with a range of industry standard drivers	✓	✓	✓	✓	✓	✓		✓
I want to control my machinery with an extended range of industry standard drivers			✓		✓			✓
I want to integrate Impact seamlessly into my business workflow	✓	✓	✓	✓	✓	✓	✓	✓

---

## Find out more

As a supplier of world class software solutions to the global packaging industry since 1988, Arden Software has gained a reputation for developing open and innovative applications that bring value to companies of all sizes.

A market leader in the creation of structural design , enterprise, workflow management and manufacturing solutions, the company focuses exclusively on the delivery of software solutions that enable packaging manufacturers and die makers to completely re-shape their pre- and post-production activities.

Where your company is an independent or multi-national enterprise; involved in high volume or short run production; work in folding carton board, corrugated or plastics; Arden Software has the solutions you need to help differentiate your company from the competition..

**Contact your local agent to find out more about all of our exciting packages or visit [www.ardensoftware.com](http://www.ardensoftware.com) to find out more about Arden Software.**

**Arden Software (UK)**  
Arden House  
Shepley Lane, Marple  
Stockport, SK6 7JW

**T** +44 (0)161 449 6600

**Arden Software GmbH**  
Jesinger Str. 65  
73230 Kirchheim unter Teck  
Germany

**T** +49 7021 80799 0

**Arden Software North America LLC**  
1790 Sun Peak Drive, Suite B 101  
Park City  
UT 84098 United States

**T** +1 (435) 709 3100

**Arden Software A/S**  
Sdr. Voldgade 10, 1.th,  
DK-7000 Fredericia  
Denmark

**T** +45 7620 1880

**Arden Software Asia Pacific**  
II F 162, Nehru Nagar  
Ghaziabad- 201001  
Uttar Pradesh  
India

**T** +91 120 4203439

---

**E** [info@ardensoftware.com](mailto:info@ardensoftware.com)  
**W** [www.ardensoftware.com](http://www.ardensoftware.com)

For general sales enquiries contact [info@ardensoftware.com](mailto:info@ardensoftware.com)  
or find your local reseller on [www.ardensoftware.com](http://www.ardensoftware.com)



**ARDEN SOFTWARE**