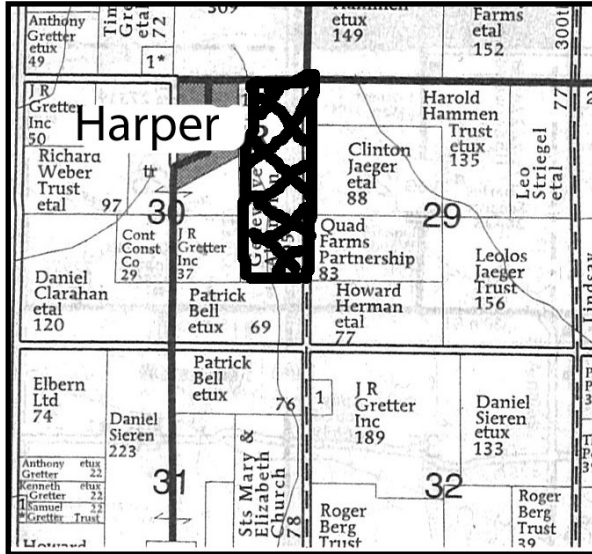


ESTATE FARMLAND AUCTION

Thursday, September 6, 10:00 AM

Junction G32 & V67 at the Northeast edge of Harper, IA



105.38 acres m/l with 97.85 farm/tillable acres and an additional 5.91 acres of CRP.

CRP consists of 4.82 acres @ \$227.85/acre and 1.09 acres @ \$196.16/acre.

Final payment on CRP: October, 2020.

CSR2 on tillable acres 62.88, CSR2 62.27 on all acres.

PLC corn yield 129, beans 47.

Taxes: \$2,206.00

TERMS: 20% down day of sale. Balance due on October 19, 2018. Possession on or before March 1, 2019. Taxes and CRP payment prorated to October 1, 2018.

Genevieve Altenhofen Estate

Website: www.hidollar.com

641-622-2015

Jerry & Emily Wohler

