

2022 CAPITAL FUND PROJECT

HVAC REPLACEMENT FOR :

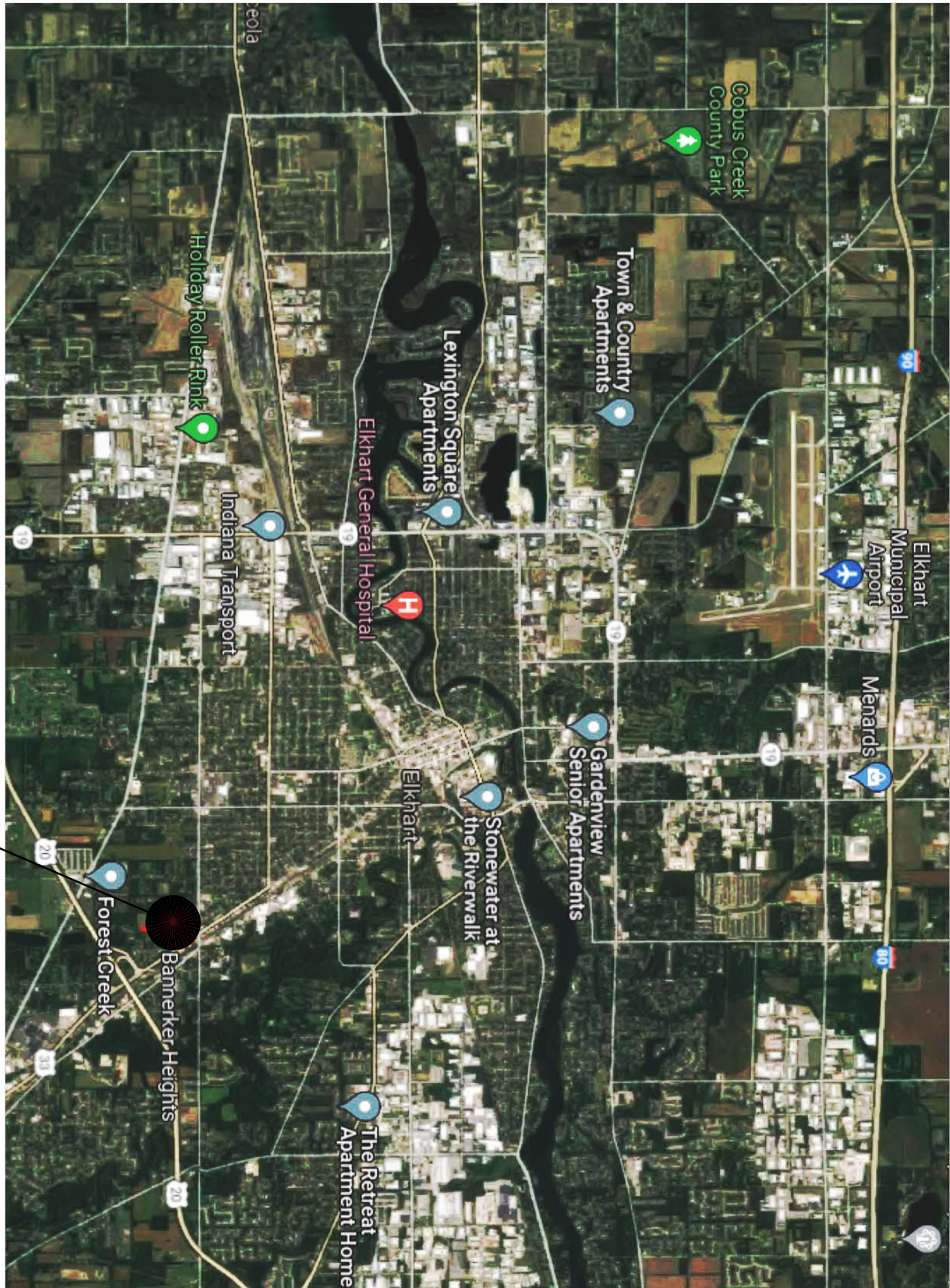
SCATTERED SITES - PHASE 2

IN0264-22-2

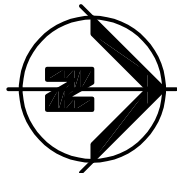
THE HOUSING AUTHORITY OF THE CITY OF ELKHART INDIANA

1396 Benham Avenue Elkhart, Indiana 46516

VICINITY MAP



PROJECT LOCATION



GOVERNING CODES

INDIANA BUILDING CODE 20142012 IBC
INDIANA PLUMBING CODE 20122006 IPC
INDIANA MECHANICAL CODE 20142012 IMC
INDIANA ELECTRICAL CODE 20092008 NECA 70
INDIANA FIRE CODE 2014 INDIANA ENERGY2012 IFC
CONSERVATION CODE 2010ASHRAE 90.1 2007

WITH ALL LOCAL AND STATE AMENDMENTS

SHEET INDEX

- TITLE SHEET
- C101 SITE PLANS - "E" & "F"
- M001 EXISTING PLANS - TYPES "C", "D", "E", "G"
- M101 DEMOLITION PLANS - TYPE "C",
- M102 DEMOLITION PLANS - TYPE "D"
- M103 DEMOLITION PLANS - TYPES "E", "G"
- M201 MECHANICAL PLANS - TYPE "C"
- M202 MECHANICAL PLANS - TYPE "D"
- M203 MECHANICAL PLANS - TYPES "E", "G"
- M501 MEP GENERAL NOTES, EQUIPMENT SCHEDULE & DOOR INFORMATION

ALTERNATES & UNIT COSTS

ALTERNATE NO. 1:
DECREASE UNIT AMOUNT (LABOR & MATERIAL) TO THE
BASE BID TO DELETE THE COMPLETE HVAC REPLACEMENT
OF A TYPE "E" BUILDING.

BOARD OF COMMISSIONERS

- Dan Boecher Commissioner
- Kristen Smole Commissioner
- Lafate Owens Commissioner
- Margaret Owens Commissioner
- JelNeVa Adams Commissioner
- Helenia Robinson Commissioner
- Synthia Billings Commissioner
- Angela M. Washington Executive Director

ABBREVIATIONS

A/C	AIR CONDITIONING	FD	FLOOR DRAIN	PC	PLUMBING CONTRACTOR
AD	ADJUSTABLE	FEC	FIRE EXTINGUISHER	PE	PERMANENT
AFF	ABOVE FINISHED FLOOR	FHC	FIRE HOSE CABINET	PL	PLATE
AL	ALUMINUM	FIN	FINISH	PLAS	PLASTIC
AP	ACCESS PANEL	FL	FLASHING	PRFAB	PREFABRICATED
ASPH	ANGLE	FLR	FLOOR	PSF	POUNDS PER SQUARE FOOT
ASPH	ARCHITECTURAL	FNDN	FOUNDATION	PT	PAINT
ASPH	ASPHALT	FRP	FIBERGLASS REINFORCED PANEL	QT	QUARRY TILE
BLK	BENCH MARK	FTG	FOOTING		
BD	BOARD	GA	GAUGE		
BIT	BITUMINOUS	GAUV	GALVANIZED		
BLDG	BUILDING	GC	GENERAL CONTRACTOR		
BLK	BLOCK	GPM	GALLONS PER MINUTE		
BLKG	BLOCKING	GPM	GALLONS PER MINUTE		
BKG	BEARING	GPM	GALLONS PER MINUTE		
BTM	BOTTOM	GYP	GYPSON BOARD		
CAB	CABINET	HC	HOLE		
CB	CONCRETE BLOCK	HDCP	HOLLOW CORE		
CC	CENTER TO CENTER	HDWR	HARDWARE		
CF	CUBIC FEET PER MINUTE	HM	HOLLOW METAL		
CH	CHALK BOARD	HORIZ	HORIZONTAL		
CHB	CAST IRON	HT	HEIGHT		
CJ	CENTER JOINT	HTR	HEATER		
C	CENTER LINE	HW	HOT WATER		
CLG	CEILING	ID	INSIDE DIAMETER		
CMU	CONCRETE MASONRY UNIT	INSUL	INSULATION (INSULATED)		
CO	CLEAN OUT	INT	INTERIOR		
COL	COLUMN	ISO JT	ISOLATION JOINT		
CONC	CONCRETE	JT	JOINT		
CONT	CONTINUOUS	LAV	LAVATORY		
CONTR	CONTRACTOR	MATL	MATERIAL		
CT	CERAMIC TILE	MAX	MAXIMUM		
CTR	CENTER	MCH	MECHANICAL CONTRACTOR		
CY	CUBIC YARD	MIN	MINIMUM		
DBL	DOUBLE	MISC	MISCELLANEOUS		
DB	DRINKING FOUNTAIN	MISC	MISCELLANEOUS		
DN	DOWN	MISC	MISCELLANEOUS		
DN	DOWN	MISC	MISCELLANEOUS		
DR	DOOR	MISC	MISCELLANEOUS		
DS	DOWN SPOUT	MISC	MISCELLANEOUS		
DTL	DETAIL	MISC	MISCELLANEOUS		
DWG	DRAWING	MISC	MISCELLANEOUS		
EA	EACH	MISC	MISCELLANEOUS		
EL	ELECTRICAL CONTRACTOR	MISC	MISCELLANEOUS		
ELEV	ELEVATION	MISC	MISCELLANEOUS		
ELEC	ELECTRIC (ELECTRICAL)	MISC	MISCELLANEOUS		
ER	EMERGENCY	MISC	MISCELLANEOUS		
EW	ELECTRICAL PANEL	MISC	MISCELLANEOUS		
EW	ELECTRIC WATER COOLER	MISC	MISCELLANEOUS		
EXT	EXISTING	MISC	MISCELLANEOUS		
EXT	EXTERIOR	MISC	MISCELLANEOUS		

ISSUED FOR: CONSTRUCTION DOCUMENTS
DATE: APRIL 1, 2022

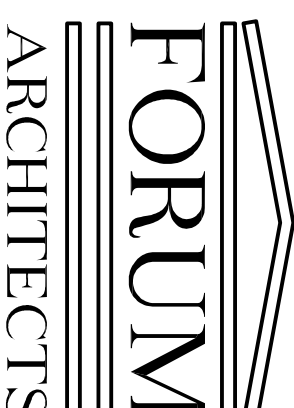
FORUM ARCHITECTS, LLC

415 Lincolnway East

Mishawaka, Indiana

Phone: 574-233-2119

email: Info@forumarchitectsllc.com



SET NUMBER

SEAL / SIGN

