



THE GEODE

Lakeside Gem and Mineral Club, Inc. (LGMC)

Web Site: www.lakesidegemandmineralclub.com

E-mail: lgmgeode2025@outlook.com

Facebook: Lakeside Gem & Mineral Club

Instagram: lakesidegemandmineral

Volume 203, Issue 05

May 2026

Purpose: To promote activities of mutual interest for collecting and displaying gems and minerals.

Address: Lakeside Gem & Mineral Club, Inc., PO Box 6652, Kennewick, WA 99336-0603

IN THIS ISSUE:

Page

2. **Note from the President**
2. **Meeting Announcement**
3. **Classes, Gatherings, Field Trips and Groups**
4. **General Club Meeting Minutes**
6. **Member of the Month**
7. **Selected NFMS Club Shows**
10. **New section, announcements**
11. **Articles**
13. **Club Board Meeting Minutes**
15. **Jr. Club Report**
16. **Classifieds**
017. **Updated Officer Listings**

GEODE Submission Deadline:

19th of each month for member articles & photos

E-mail: lgmgeode2025@outlook.com

Membership: Annual dues are due in October.

Please pay at the monthly meeting or remit to LGMC, PO Box 6652, Kennewick, WA. 99336-0603.

Membership Forms: Link to form can be found on the club web site.

GEODE Reprint Permission: Permission to reprint is granted, provided credit is given to the source.

Club Meetings & Upcoming Events

Club Meetings are held the first Tuesday of each month. At the Seventh Day Adventist Church, at 7105 W. 10th Ave., in Kennewick. Doors open at 6:30 pm for social. Meetings begin at 7 pm.

May 5th – General Club Meeting 6:30 – Gather before meeting, 7:00 pm general meeting

May 12th - Junior Club Meeting at the REACH, Columbia Park, 6:30 – 8 pm

May 18th – Board Meeting 6:30 pm

A Note from the President . . .

Summer is just around the corner, so plans for going places and looking for rocks should be starting. If a road trip to see some great mineral specimen sounds good, there's still space available for our bus trip to the RICE museum this June, so sign up soon. With our show finishing last month I hope people found some new materials and ideas to work on this summer. I think after the show is a time to evaluate our own show we put on with the idea of making next year's Northwest Federation show the best and well organized show we can. So we can show other rockhounds what our club can do. See everyone in May Dave Westland.

Upcoming Meeting

May's Meeting will start off early, with a Tailgate swap from 5:00-6:30 pm in the church parking-lot, followed inside by a 10-minute rockhound presentations on regional museums, including Fossil Butte, Museum of the Rockies, John Day Museum, Baker City Museum, Stonerose Interpretive Center & Eocene Fossil Site, and the Field Museum of Chicago by members sharing highlights and experiences of past visits. See listing and website address further down to check out the sites ahead of time or maybe plan a trip for yourself.

Remember, if you plan on joining our field trip to The Rice Museum in Portland on June 13th. We must collect payment by the May meeting. In order to estimate a cost, we used a full occupancy of 50 to come up with the cost of \$50. Adjustments to costs would have to be made if we do not fill the bus. **The bus will pick up at the back of the parking lot, at the Fred Myers on corner of 10th and Hwy 395 in Kennewick. Please arrive between 6:30 and 6:45 am, as the bus will be leaving promptly at 7:00 am.** The price includes transportation to and from and admission to the museum. **We encourage folks to bring a snack and/or sack lunch and drinks**, the bus has a restroom on board. If you have any further questions, please address at the meeting. This is a great chance to enjoy an outing without the stress of the drive, traffic, and parking. The museum changes out displays on a regular basis, so even if you have been before, you can still see something new. They also have things you can see on the grounds around the museum as well.

Trip will be cancelled unless $\frac{3}{4}$ capacity can be met.

Classes, Gatherings, Field Trips, and Groups

Field trip to: Wild Turkey Mine – Nobile Serpentine in assorted colors – Headed up by Karen Kautz, Meet 9:00 am at

Social / Crafting Gathering Dates (Could change as needed)

This is a great opportunity to get together with friends and work on a project. There is no charge for these gatherings. Class times for all dates are from 1 until 4 PM.

2026 Dates

- Social Crafting Group: Apr 12th, 26th
- Social Crafting Group: May 3rd, 24th
- Social Crafting Group: Jun 7th, 28th

These classes will be held at Mickee Madden's workshop in Kennewick. To join the fun, call her at 509-438-5798 to sign up or for more information. Look for future classes offered by Sandra Bryant, you can also check out her selection of classes offered at The Downtown Mercantile. **Classes offered by Sandra will be in red.**

Flat Lap Cabbing Class Dates (Could change as needed)

Flat Lap Cabbing classes are going great guns. Following are the class dates Mondays 6-8 Tues & Wed, 1-3 & 6-8 pm and Saturdays 1-3 pm. **(We currently have openings on Wed's both time slots)**

2026 dates

- Apr 6th, 7th, 8th, & 11th, 20th, 21st, 22nd
- May 11th, 12th, 13th, & 16th, 25th, 26th, 27th, & 30th
- Jun 8th, 9th, 10th & 13th, 22nd, 23rd, 24th, & 27th,

If you're interested in learning how to make cabochons please call Mickee at 509-438-5798 to sign up or for more information. For newcomers to cabbing, you are given material to get you started. You can also purchase slabs provided by the club. Prices are as marked on the slab.

These classes are for adult club members only. No children please. Please do not bring thunder eggs, geodes or any thick material to cut. An assortment of slabs will be available. Beginners are certainly welcome!

The first visit is \$10. After that, the club charges \$2 an hour, which is to be paid at the end of each class. The fees go to replenishing the materials used for the class. (\$10 fee is an annual fee)

Date	Host	Material	Site	Meet up – Place & Time	Equip
5/22	Karen Kautz	Serpentine	Wild Turkey Mine	9:00 am at The Caboose Park	Rock hammer

For those who would like to head there directly, and have not been before, directions below:

Suggest truck or high clearance vehicle, as road is narrow, rough and has ruts that are not handled well by lower riding vehicles. The Wild Turkey Mine opens @ 9:00 am and is about 5 miles out from Valley township.

About a mile past Waitt Resort you will see the old cabin on the right, on that corner (rickety remains of a shed)

watch for signs low to the ground (Arrow and picture drawn of a Turkey with blue background).

It is a 1 mile drive up the hill through the woods. Come to an open area to park, port-a-potties, and tent where you pay for your material. Be sure to keep an open eye for material just lying on the ground. On my visit there I found all sorts of stuff just lying on the ground including orange serpentine, green found in the mine area. You will be climbing around a hillside, so dress accordingly and wear good shoes or boots, and bring your tick and bug spray, don't want to take any critters home with you.

General Club Meeting Minutes April 7–2026

Meeting was called to order by Dave Westland at 7:05 pm

No corrections or additions to last month’s minutes – accepted as printed in the Geode

Old Business

Covered upcoming show, time changes, answered questions and identified what positions still needed to be filled.

Members: The annual show is the major fundraiser for the club, and one of a handful of events we put on each year to share and inform the community. It is also a way to draw new members. As such we rely on volunteers or members to setup, run, and take down, that means you. Funds raised go to cover expenses like meeting space, storage, food, newsletter, etc., general expenses, and keeping the annual dues low.

Unfortunately, we have been seeing very few and the same people stepping up every time for all the events. And mostly the older ones. Our club currently has 116 adult members, and only 20-30 who help at our events. Being part of a club means more than just attending an occasional meeting; it means actively participating in club activities when needed. As a majority of our volunteers are getting up there, it is becoming increasingly more difficult for them to do some of the task, and therefor requiring us to hire outside help for moving stuff. That means less of the funds raised for the club, and more going to pay for outside help. Most activities only require 1-3 hours of your time. So please consider stepping up to help where you can.

New Business

Membership

Those members, who have not paid their dues by now or contacted Lisa Noland to work out payment, will have been removed from the active member list. If you have and have not received your Geode, contact me at lmggeode2025@outlook.com.

May

It’s time for a little spring cleaning—so let’s practice “catch and release.” Its tailgating time, folks!

Bring along any extra material, equipment, or handmade items you’re ready to part with and take advantage of this opportunity to trade or sell with fellow members.

Tailgating will run from 5:00–6:30 PM, with the general meeting beginning at 7:00 PM.

Upcoming Meetings

10-Minute presentations will cover the following museums:

Royal Tyrrell Museum, Drumheller, Alberta - Larry Hulstrom

<https://tyrrellmuseum.com/>

Field Museum, Chicago, Illinois Patrick Donohue

Stonerose Fossils, Republic Washington – Dave Westland

<https://stonerosefossil.org/>

Museum of the Rockies, Bozeman, Montana – Chris Sorensen

<https://museumoftherockies.org/>

Fossil Butte National Monument, Lincoln County, Wyoming – Jerry Sorensen

<https://www.nps.gov/fobu/index.htm>

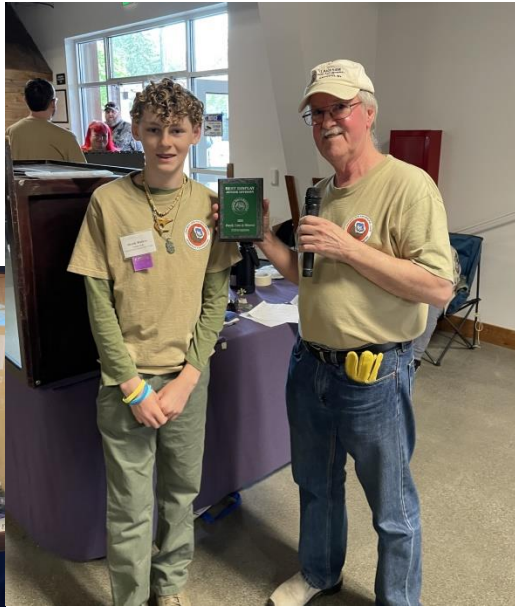
June

Bryan Coles- Will speak about resources available from Other Clubs

Results of the Member Survey are in, only 15 reply's. Will go over the results

The survey was for your benefit to let us know what you would like to see added and what you would like to go away. Also let us know where we need to make improvements and what we are getting right, but could use a little tweaking. Right now are programs and activities are determined by the board members. We really want for our club to be what you want it to be, and meet your expectations, but without hearing back from you, we can only guess. I will attach as a separate document to print or not print if you choose.

AND THE WINNERS ARE FROM OUR ANNUAL 2026 SHOW.....



Junior Division

Junior Ahziah Mallery received his plaque for the best Junior display at our recent show for his colorful mineral collection display.

Adult Division



John Buster won the best Adult display at the show for his memorial display honoring his friend Ryan King. He received his plaque while Ryan's widow and family were there to witness it.

Member of the Month

Jerry Sorensen



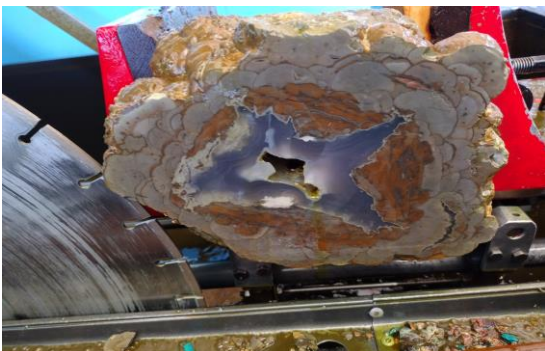
Jerry wasn't available for the member of the month column a couple of newsletters back, so he is solo featured here. However, he shared this adorable picture of himself and Chris at the Hancock retreat, so it's included here. He wanted to speak for himself, so the text will be in first person.

I've been collecting for over 40 years. I grew up on a farm in the mid-west where I found agates, petrified wood, and fossils in the gravel. My school offered lapidary classes. I learned how to tumble, make cabs, and do simple jewelry work in the 7th and 8th grade.

I joined my first rock club in mid 90s in Colorado, where I met Chris. She was looking for someone gullible to carry her rocks. We have been members of Lakeside for over 20 years. I've been taking classes at CBC and missed a lot of meetings recently.

My primary collecting interests today are petrified wood, Spencer opal, Montana agate, and fossils. My main vice is petrified wood. I enjoy paleo botany and dendrochronology. It's intriguing to learn about the environment that the tree lived in by the species of wood and growth ring spacing.

I enjoy the challenge of learning new lapidary skills, especially cutting rocks and being the first to "see" inside, especially thunder eggs. Doublets, triplets, and intarsia are a few of my favorites. I like the challenge of turning an ordinary rock into something special. On the work bench right now is a small bucket of Beacon Hill agate nodules that I've been cutting. There are Spencer opal triplets in progress. There are some Baker Ranch thunder eggs to be polished.



2026 Selected NFMS Club Shows - Schedule

The Shows listed below are a subset of the complete list of club shows provided in the Northwest Federation Newsletter. More complete and specific information can be found in the NFMS Newsletter or online at:

Apr 24 th -26 th Fri 10-4 Sat 10-5 Sun 10-4	Yakima Rock and Mineral Club	Modern Living Bldg. Central Washington State Fairgrounds & Event center 1301 S Fair Ave. Yakima, WA 98901	Marti Sondgeroth marthams@myct1.net (509) 910-3484
Apr 25 th & 26 th Sat 10-5 Sun 10-5	West Seattle Rock Club	Alki Masonic Temple 4736 40 th Ave. SW West Seattle, WA	Annette Nelson show@westseattlerockclub.org westseattlerockclub.org
Apr 25 th & 26 th Sat 10-5 Sun 10-4	Grays Harbor Rock and Gem Club	Grays Harbor County Fairgrounds 43 Elma-McCleary Rd Elma, WA 98541	Gary Emberley (360) 533-6196 Elissa624@hotmail.com
May 2 nd & 3 rd Sat 10-5 Sun 10-5	Everett Rock and Gem Club	Evergreen County Fairgrounds – Weik Event Center 18359 Cascade View Dr. Monroe, WA 98292	everettrockclub@hotmail.com
May 9 th & 10 th Sat 10-6 Sun 10-4	Bozeman Gem and Mineral Club	Gallatin County Fairgrounds 901 North Black Bldg. 1&2 Bozeman, MT 59715	Linda Johnson bgmcmnt@gmail.com bozemandgemandmineralclub.com
May 9 th & 10 th Sat 10-6 Sun 10-4	Hatrock Gem and Mineral Show	Eastern Oregon Trade and Event Center 1705 East Airport Rd. Herminston, OR 97838	Mike Filarski stonemarlin@netscape.net (541) 571-2593
May 16 th & 17 th Sat 9-5 Sun 10-4	Butte Mineral and Gem Club	Butte Civic Center Main Arena 1340 Harrison Ave. Butte, MT 59701	Jerry D’Arcy jkdudding@gmail.com (406) 491-2054
May 23 rd & 24 th Sat 9-6 Sun 10-4	Clackamette Mineral and Gem Corp.	Clackamas County Fairgrounds and Events Center 694 NE 4 th Ave. Canby, OR 97013	Juanita Whitaker Cmgcshowchair2026@gmail.com Clackamaettegem.org

Jun 17 th – 21 st Thur 9-5 Fri 9-5 Sat 9-5 Sun 9-3	Prineville Rockhound Pow Wow	Cook County Fairgrounds 120 S Main Street Prineville, OR	Jim McCoy (530) 999-8045 www.prineville.rocks
Jun 1 st -21 st Fri 10-5 Sat 10-5 Sun 10-4	Lower Umpqua Gem and Lapidary Society	Reedsport Community Center 451 Winchester Ave. Reedsport, OR 97467	Bambi Darling (541) 420-8014 reedsportrockshow@gmail.com
July 24 ^h -26 th Fri 9-5 Sat 9-6 Sun 9-5	Washington Agate and Mineral Society	Tenino City Park 300 Park Ave. W. Tenino, WA 98589	Doug Shank wamsolympia@gmail.com
Sept 19 th & 20 th Sat 10-5 Sun 10-4	Southern Washington Minerlogical Society	Longview Fairgrounds Cowlitz County Event Center 1900 3 rd Ave Longview, WA 98632	Greg Larson Swimineralogicalsociety1@gmail.com Chet Chafton (360) 600-9830

A great show takes participation from its members. And a show where only a few participate and take part in the activities and displays make for a show that leaves those doing all the work tired, and doesn't attract as many visitors or encourage new members to join. We have 116 adult members and 25 Jr members, but only about 22 that actively participate in our events, doing all the work. And the same individuals are the same ones who volunteer every time. Just think how much better our shows and events could be if more people participated. We only do a few activities each year to raise funds and awareness of our club, and if more members participated for even one each of these events, we could see our club really shine and draw interest. Because who wants to join a club where nobody other than a handful of people participate? And if you would like to see something different or have ideas for change or improvement, then completing, and submitting the survey would go a long way.

Shows and events can be a lot of work, but they can also be a lot of fun, and a great way to share your passion for the hobby.

Information and Contact Info for Club Events, Volunteers needed for Outside Requests and Field Trips

Field Trips

Mike Mineer, Is our Committee Head for Field Trips. Contact info, Text or call (509) 851-1410, email: michaeltmineer@gmail.com or Message on Facebook if you would like to see a field trip offered at a chosen location, if you could lead it, along with your name, contact info for preferred means of contact. If you could volunteer for any locations, it would open up prospects and help Mike. Thanks

We are also looking for a Volunteer coordinator: Someone who can take charge of the volunteers, contact info, track what activities are signup for, and remind folks what activities they signed up for and when. Someone to help things run smoother.

Volunteers to help with request for presenters that come from outside groups in the community submitted on Clubs Facebook page or club email.

The club receives requests now and then from outside groups like scouts, and from schools, requesting for someone to present at their location on different topics dealing with rocks, minerals, and fossils. Any received will be listed here with topic, where, name and contact info of requestor, and when they would like to have done. This is a great way for the club to connect with our community and light that spark of curiosity and desire to learn more. If you would be willing, please include one of the board members when contacting the requestor, This allows us to track who can present, when, on what topics and contact info for future reference.

We will post what request come in, for what, when, and who is requesting. If it is something that you might be interested in, then who to contact on the board to set it up.

Share Events outside of the Club

Know of any outside events coming up that you think other members might be interested in? Send information to lmggeode2025@outlook.com to have it announced here in the Geode.

Wire wrapping in June with KittyKat Jewelry

There are plans to invite Kathy Meuschel to teach wire wrapping **moved to October**. A signup list is currently being used to assess what interest's members most. Once interest level and levels are desired are assessed, the coordination with the Kathy will start. Pre-registration provides our instructor with needed info on what, and how much material to bring, and prepare tutorials.

Please sign up at the next meeting so the list can be forwarded to Kathy.

Questions please contact Chris Sorensen at the next meeting.

Items for Sale

If you have any items for sale, looking to buy, or classes that you would like to share with other members, please feel free to send to lmggeode2025@outlok.com by the 20th of the month to get into the geode classifieds.

Items for sale can be listed for 2 months unless otherwise noted, or sold. If items are sold or no longer needed, please notify me at your earliest convenience so that I can remove, and keep you from further inquiries.

Lapidary Tips and Tricks

By Jerry Sorensen

There are three primary methods for dopping when making cabochons. All three methods require the mating areas to be cleaned with isopropyl or acetone first to ensure a strong bond.

1. Dop Wax Method (Traditional)

The long-standing, classic approach uses dop wax and a properly sized dop rod.

Pros:

- Ideal for heat-sensitive materials like opal
- Quick and easy cleanup with acetone
- Time-tested and widely trusted

Cons:

- Requires some heat control and practice
- Sometimes the cab will pop off during the sanding process

Wax dop station photo

2. Super Glue / Epoxy Method

This method uses adhesive (super glue or epoxy) to bond the stone to the dop.

Process highlights:

- Stainless steel screws are glued to the back of the stone
- Screws attach to a handle with a set screw
- Often used with systems like a “dop pro kit”

Pros:

- Larger handle reduces strain (great for carpal tunnel issues)
- Adjustable handle length
- Secure and stable hold

Cons:

- Requires soaking in acetone to remove
- Not suitable for stabilized materials

Dop pro kit photo

Pro dop photo

3. Double-Sided Tape Method

A simple and effective method using strong tape such as Gorilla double-sided tape.

Best for:

- Doublets and triplets
- Intarsia work
- Opal and delicate materials

Tools & tips:

- Acrylic dop sticks and tables work especially well
- Use a butter knife to carefully separate the stone when finished

Pros:

- No heat required
- Fast setup
- Gentle on fragile assemblies

Gorilla tape photo***Acrylic dop photo*****Final Note**

There are many variations and hybrid approaches, but these three methods cover the majority of cabochon dopping techniques. The best choice depends on:

- Material sensitivity
- Personal comfort
- Type of project

Club Board Meeting Minutes April 20, 2026

Board Meeting Minutes

Present: Dave, Patrick, Larry, Debbie, Cheryl, and Vickie

Meeting was called to order at 6:35 p.m.

Geode report: NFMS Newsletter was sent via Google Doc's due to size, causing emailing problems with most folk's emails.

Treasurer's report: Reported income from show was slightly over \$14,000, before expenses. Membership – 124 adult members – and 25 junior members, with several new member signups at the show to be included in next month's total.

Federation: Larry presented a bid to host the April 2027 NFMS show. This show will be in conjunction with our normal show. The annual meeting will be Friday afternoon; the banquet will be on Saturday. A banquet committee will need to be formed to plan the banquet. Potential guest speakers will be explored for the meeting, as well as local field trips.

Old Business:

April show debriefing: Attendance was just over 1200 people. Guests reported they most often heard about the show from Facebook, friends, flyers or signs. A banner for the Geode Cracking area was suggested to enhance awareness of this activity. A discussion of how to dismantle cases next year might be helpful

Policy and Procedures Committee was formed and will meet May 1, members include Chris, Sharon, Debbie and Chrystal

Upcoming programs:

May 5, 2026 club meeting – Tailgating sales from 5-6:30 pm with the meeting following with a series of brief presentations on regional museums

June club meeting will be a presentation by Bryan Coles about Arizona club offerings

Rice Museum trip– pending updates...

New Business:

Dave motioned to approve the bid for the NFMS show, Debbie seconded. Motion passed.

Debbie will explore requirements for WA Mineral Society membership for our club

Jr. Club Report – April 14th 2026

The Junior Rock Club will meet on Tuesday, May 12 at 6:30 at the REACH Museum. We will learn about how to prepare for a field trip and set a date for a collecting trip. We will also set a date for gem tree workshop, so bring your calendars. Congratulations to both Ahziah and Juni for their outstanding display cases at the April show, and to Ahziah for winning the visitor's choice award!

Mineral of the Month reports

Azurite *by Auri Morris*

This piece of azurite is from Arizona copper mines. Azurite is colored deep blue. Its hardness ranges from 3.5 to 4 on the Mohs scale. It forms in a variety of crystal shapes.

Besides Arizona, azurite is found in southwest Africa, Mexico, France, and Utah.

Azurite is a hydrous copper carbonate. This means that azurite forms when carbon dioxide-laden water, aka acid water, seeps into copper deposits and dissolves the copper. Then the dissolved copper solution seeps into an area where conditions are right to form azurite crystals.

Azurite slowly weathers to malachite. Heating will cause it to green or blacken.

Fuchsite *by Cam*

Fuchsite, also known as chrome mica, is a well-known member of the mica family. Its hardness on the Mohs scale is 2.5. Fuchsite crystallizes in the form of masses, scales, layered plates, or even tiny tabular crystals. It's a common mineral first found in the 1800s. It was named after a German geologist named Joanne Nepomuk von Fuchs. Fuchsite is commonly used as an ornamental gem or as a healing stone to balance mind, body, and spirit.

Aquamarine *by Callan*

Aquamarine is the birthstone of March and of my brother, Lachlan, and its color is greenish blue. The streak is colorless and the luster is glassy. The hardness is 7.5 to 8. A bunch of aquamarine was found in 1910 that weighed 550,000 carats. It is usually found in long hexagonal crystals.

Turquoise *by Callan*

Its color is light blue and blue green. It is the birthstone of December and the birthstone of my sister, Maeve, and its streak is pale blue, green, or white. Its luster is waxy, earthy, or dull. On the Mohs scale it is 5 to 6. Turquoise is a favorite of Chinese stone carvers. If you think you have a piece of turquoise, it may be fake.

Classifieds

Mike Zinski's Workshop is available for any and all lapidary arts. Contact Mike at: gemmakermz@gmail.com or at 509-783-9337. (The email address for Mike is new, old one no longer good)

Tumbling Grit is available to Club members through Mickee Madden and is sold in 2 pound bags only. Please have exact change at pick-up. Club members can contact Mickee at 509-438-5798.

- 60/80 grit \$5.25
- 220 grit \$6.55
- 600 grit \$8.00
- Cerium oxide polish powder \$18.30

NOTE: For every ten pounds of tumbled rock you donate to the club, you receive a 2-pound bag of 80/90 grit or 220 grit. Please, no river rock. Thank you.

Saw Oil is once again available to Club members. Cost is \$15 per gallon (bring your own container). Contact James McLean via Text at 509-989-1087 to schedule an appointment for pick-up on Wednesdays and weekends only. A limited number of small containers will be available for transfer at the General Club meetings

Laps – need laps for your cabber and Steve Shoemaker doesn't have what you are looking for, check with Mike Zinski. He has laps in both 6" and 8" of various grit sizes. Prices very depending on his cost, you get them for what he paid. No waiting for them to be shipped, can pick up from him, he can be reached at the above listings, see Mike Zinski's Workshop.

Also, if you are looking for a 3-D printer, Mike has a selection of smaller 225x225, and medium 300x300 size printers. These are returns that he has purchased and repaired, and again he sells these for what he paid. And if you would like to learn how to use the cad program FreeCad and slicing program Cura to learn how to design and print your own equipment and tools, he is willing to teach you how to model, print and put you product together, he would be willing to take on a couple of students at a time. A great way to get started, without breaking the bank.

Reminder: Club Membership forms are available online at:

<https://www.lakesidegemandmineralclub.com/officers---new-members-info.html>

New American Federation of Mineralogical societies Website.

The AFMS has updated its website. It has a new look and is very usable. Check it out at: <https://www.amfed.org/>.

- **You might be a rockhound if . . .** You describe your vacations by the rocks you brought home.

Lakeside Gem and Mineral Club Officers and Committee Chairs

Officers Email: lakesidegemandmineral@yahoo.com

President	Dave Westland	Director ^(x)	Wayne Larson
Vice-President	Sharon Louise	Director ^(y)	Vacant
Secretary	Cheryl Rhoads	Federation Rep.	Larry Hulstrom
Treasurer	Debbie Muller	Junior Club Leader	Pauline Schafer
Past President	Patrick Donohue	Bulletin Editor	Vickie Elkins
Program Director	Vacant	Librarian	Denise Williams
Membership	Lisa Noland	Webmaster	John Wenskovitch
Sunshine	Vacant	Historian	Mickee Madden
Field Trip Coordinator	Mike Mineer	Volunteer Coordinator	

By-Laws specify two year elected terms for Board Members, beginning in November. President, Vice-President and

One Director begin terms in even^(y) numbered years. Secretary, Treasurer, and a Second Director begin terms in odd^(x) numbered years. The Federation Representative, Junior Club Leader, Bulletin Editor and Committee Chairs are Board- approved volunteers. By-laws can be found at: www.lakesidegemandmineral.com.

Rockhound Legislative Advocate

When notified by the AFMS, the NFMS, ALAA or club members about legislative issues that will affect rockhounding activities, we will forward that information to club members via email lists.



Club Affiliations:

American Federation of Mineralogical Societies (AFMS)
 Northwest Federation of Mineralogical Societies (NFMS)
 American Lands Access Association (ALAA)

<http://www.amfed.org>
<http://www.amfed.org/nfms>
<http://www.amlands.org>



Lakeside Gem and Mineral Club is a proud member of the Tri-Cities Visitor and Convention Bureau.

THE GEODE

Volume 203 Issue 05

May 2026



LAKESIDE GEM AND MINERAL CLUB, INC.
PO Box 6652
Kennewick, WA. 99336-0603