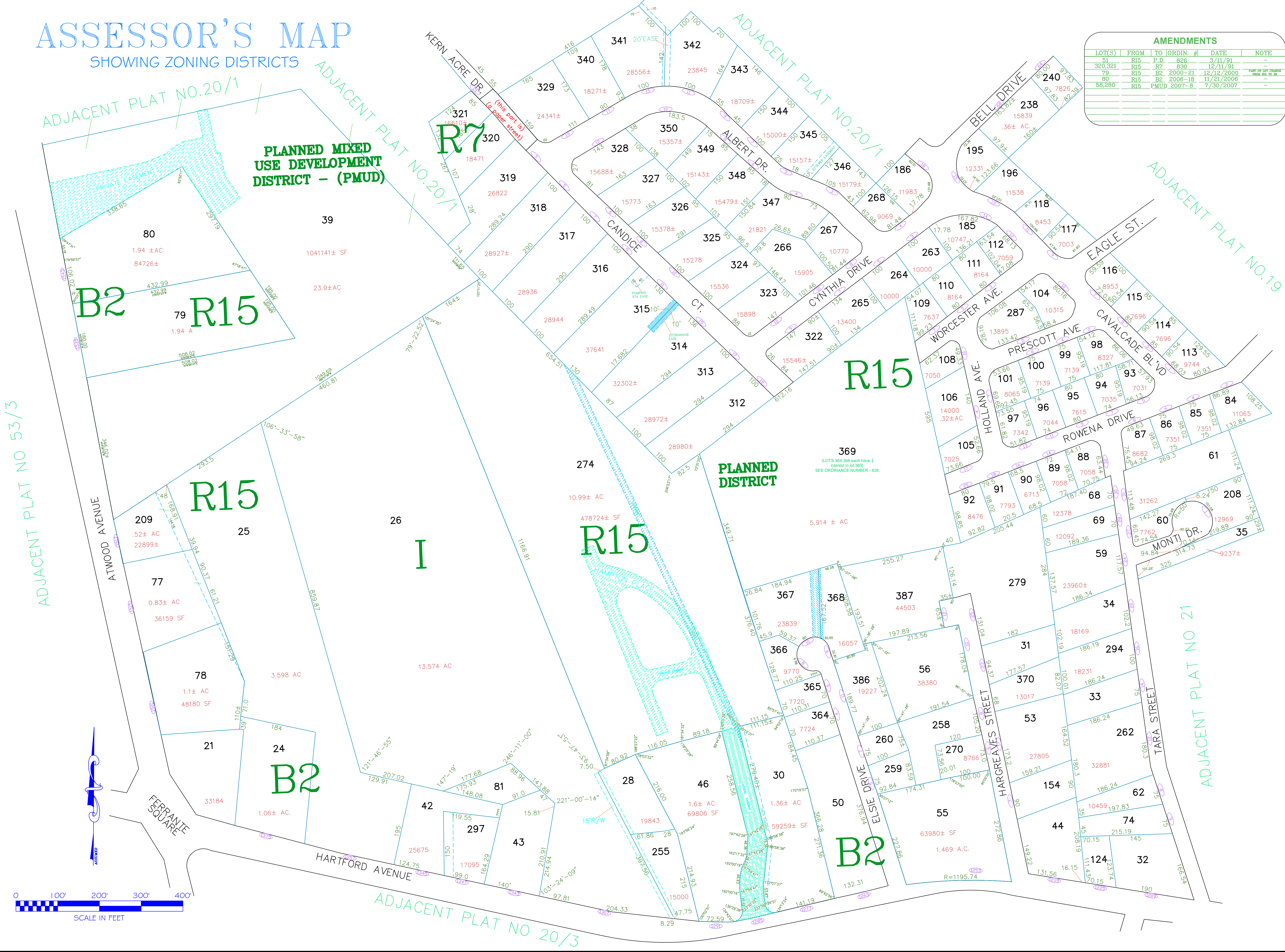


ASSESSOR'S MAP

SHOWING ZONING DISTRICTS

AMENDMENTS					
LOT(S)	FROM	TO	ORDIN. #	DATE	NOTE
51	R15	P.D.	826	3/11/91	-
320,321	R15	R7	830	12/11/91	-
79	R15	B2	2000-21	12/12/2000	PART OF LOT CHANGE FROM B2 TO B2
80	R15	B2	2006-18	11/21/2006	-
58,280	R15	PMUD	2007-8	7/30/2007	-



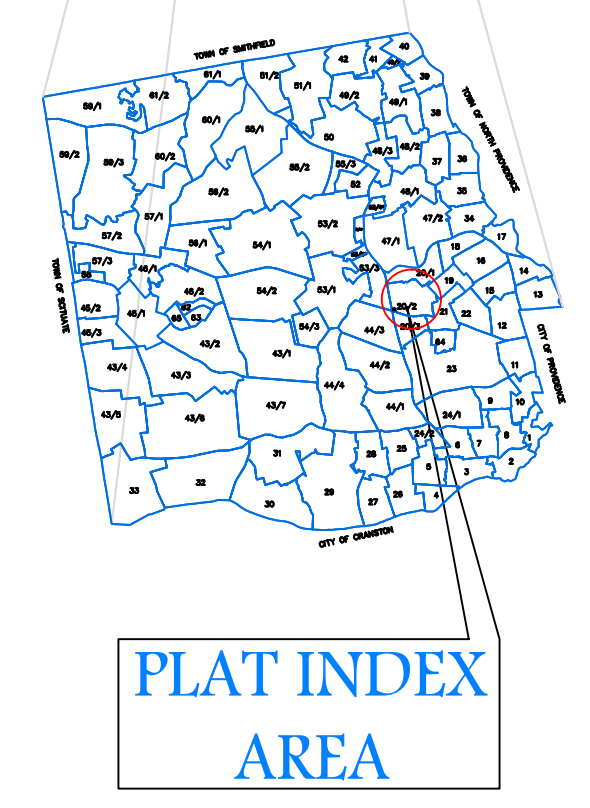
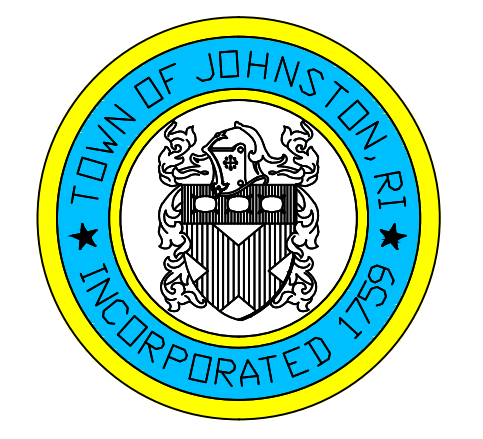
Assessor's Plat Number

20/2

STATE OF RHODE ISLAND
TOWN OF JOHNSTON

PROVIDENCE COUNTY
INCORPORATED 1759

ASSESSOR'S OFFICE
1385 HARTFORD AVENUE
JOHNSTON, RHODE ISLAND
02919



Scale: 1:100
Revised By: Benjamin Ng
Last updated: January 04, 2016
Date printed: January 04, 2016

For copies of plat maps, please go to the DPW at 100 Irons Avenue Johnston Rhode Island. Thank you.

NOTE: This map was prepared for the use of the Town of Johnston for assessment and illustrative purposes only. It does not represent a survey of the premises. No liability is assumed as to the sufficiency or accuracy of the data delineated hereon.