

# LEASE : BEST VALUE OFFICE / FLEX SPACE

## Move-In Ready Suites



From \$8.00/SF/NNN  
8200-8201 E. Pacific Place, Denver, CO 80231

### SIX BUILDINGS

BUILDING TYPE:	Quality Class B & C Flex Space
AVAILABLE SPACE:	1,200 sf - 4,189 sf
LEASE RATES:	\$8.00/SF/NNN
2018 EXPENSES:	\$4.25/SF
YEAR BUILT:	1981

### FEATURING

- Perfect 'office flex' spaces - 50% office, 50% warehouse
- Drive in doors in buildings 2, 3, 4 & 5
- Dock-high doors in 1 & 6
- Meticulously maintained property
- Perfect 'move-in-ready' suites

For more information, please contact:

**John Fairbairn**

T 303.226.4764

john@denverofficespace.com

**Rick Giarratano**

T 303.226.4765

rick@denverofficespace.com

**Mike Lindquist**

T 303.226.4768

mike@denverofficespace.com



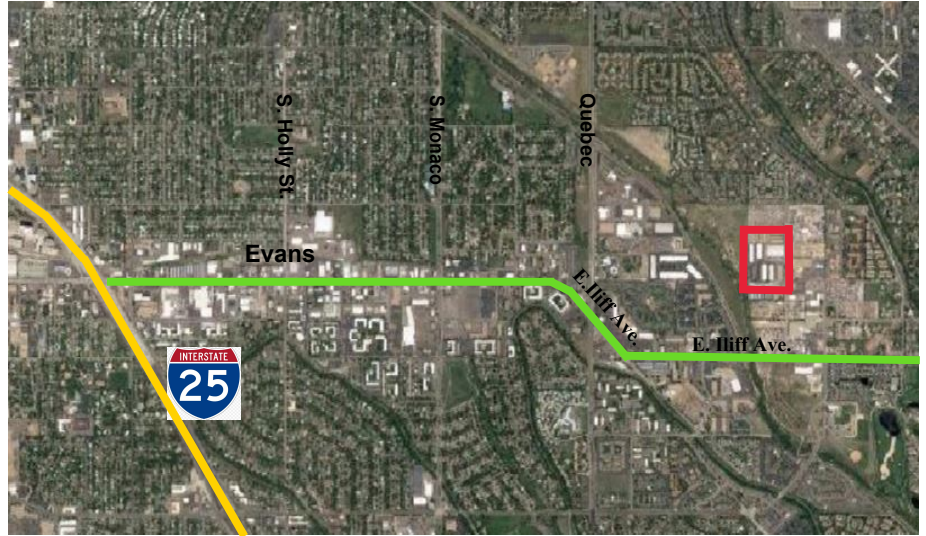
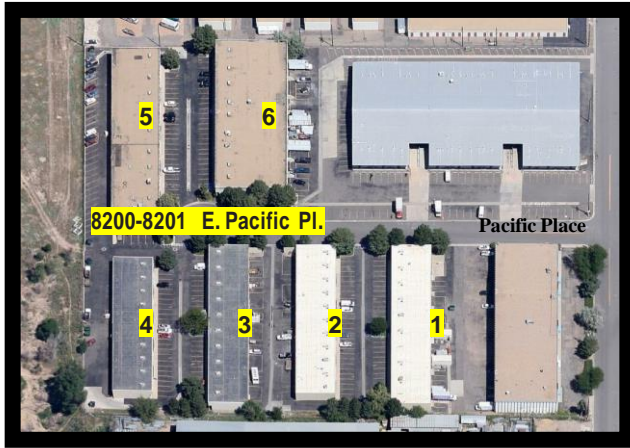
2696 S. Colorado Blvd | Suite 320 | Denver, CO 80222 | 303-765-4344

[www.denverofficespace.com](http://www.denverofficespace.com)

The information above has been obtained from sources believed reliable. While we do not doubt its accuracy, we have not verified it and make no guarantee, warranty or representation about it. It is your responsibility to independently confirm its accuracy and completeness. Any projections, opinions, assumptions or estimates used for example only and do not represent the current or future performance of the property. The value of the transaction to you depends on tax and other factors which should be evaluated by your tax, financial and legal advisors. You and your advisors should conduct a careful, independent investigation of the property to determine to your satisfaction the suitability of the property for your needs.

# LEASE : HIGHLY FUNCTIONAL FLEX SPACE

8200-8201 E. Pacific Place, Denver, CO 80231



## Available Spaces and Floor Plans

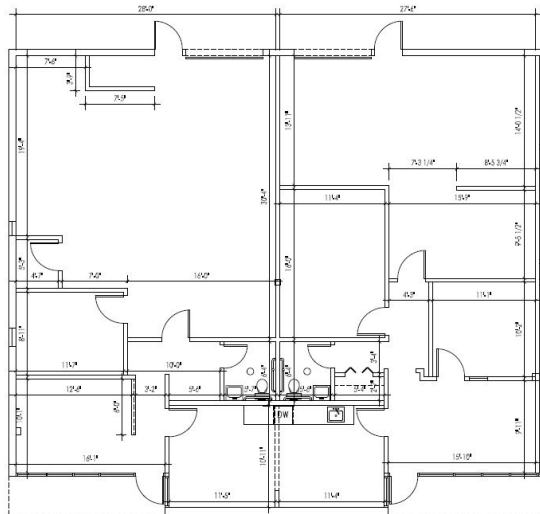
Bldg 1- Unit 101  
1,448 sf - (Dock high)  
Available now

Bldg 1 - Unit 102  
1,339 sf - (Dock high)  
Available now

Bldg 1- Unit 103  
1,402 sf (Dock high)  
Available May 1, 2018

Bldg 2 - Unit 208  
1,200 sf - (Drive in)  
Available May 1, 2018

Bldg 3 - Unit 309  
1,400 sf - (Drive in)  
Available May 1, 2018



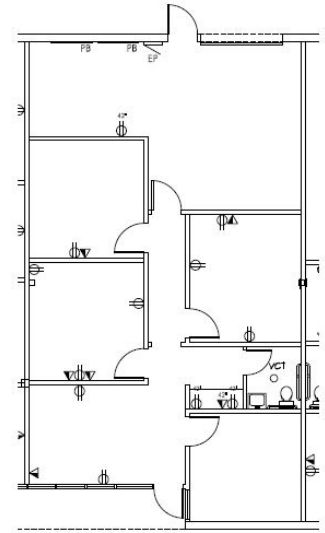
SUITE 101

1,448 SF



SUITE 102

1,339 SF



SUITE 103

1,402 SF



For more information, please contact:

John Fairbairn

T 303.226.4764

john@denverofficespace.com

Rick Giarratano

T 303.226.4765

rick@denverofficespace.com

Mike Lindquist

T 303.226.4768

mike@denverofficespace.com



2696 S. Colorado Blvd. | Suite 320 | Denver, CO 80222 | 303-765-4344

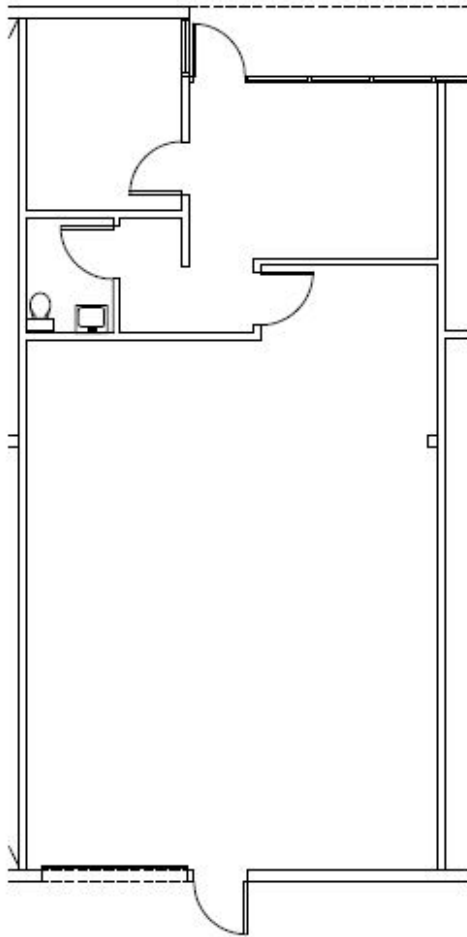
[www.denverofficespace.com](http://www.denverofficespace.com)

The information above has been obtained from sources believed reliable. While we do not doubt its accuracy, we have not verified it and make no guarantee, warranty or representation about it. It is your responsibility to independently confirm its accuracy and completeness. Any projections, opinions, assumptions or estimates used for example only and do not represent the current or future performance of the property. The value of the transaction to you depends on tax and other factors which should be evaluated by your tax, financial and legal advisors. You and your advisors should conduct a careful, independent investigation of the property to determine to your satisfaction the suitability of the property for your needs.

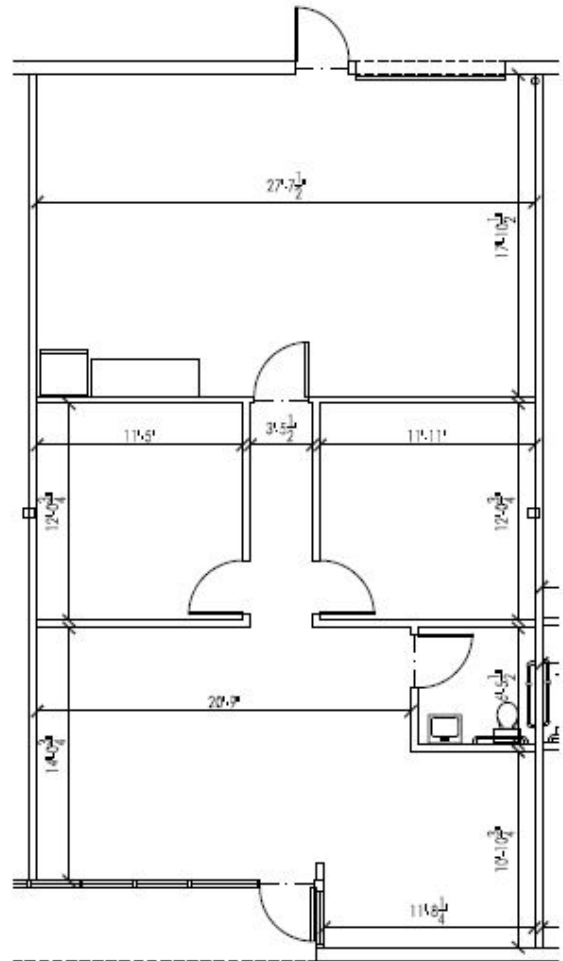


# LEASE : HIGHLY FUNCTIONAL FLEX SPACE

8200-8201 E. Pacific Place, Denver, CO 80231



SUITE 208  
1,200 SF



SUITE 309  
1,400 SF

For more information, please contact:

**John Fairbairn**  
T 303.226.4764

[john@denverofficespace.com](mailto:john@denverofficespace.com)

**Rick Giarratano**  
T 303.226.4765

[rick@denverofficespace.com](mailto:rick@denverofficespace.com)

**Mike Lindquist**

T 303.226.4768

[mike@denverofficespace.com](mailto:mike@denverofficespace.com)



2696 S. Colorado Blvd. | Suite 320 | Denver, CO 80222 | 303-765-4344

[www.denverofficespace.com](http://www.denverofficespace.com)

The information above has been obtained from sources believed reliable. While we do not doubt its accuracy, we have not verified it and make no guarantee, warranty or representation about it. It is your responsibility to independently confirm its accuracy and completeness. Any projections, opinions, assumptions or estimates used for example only and do not represent the current or future performance of the property. The value of the transaction to you depends on tax and other factors which should be evaluated by your tax, financial and legal advisors. You and your advisors should conduct a careful, independent investigation of the property to determine to your satisfaction the suitability of the property for your needs.