

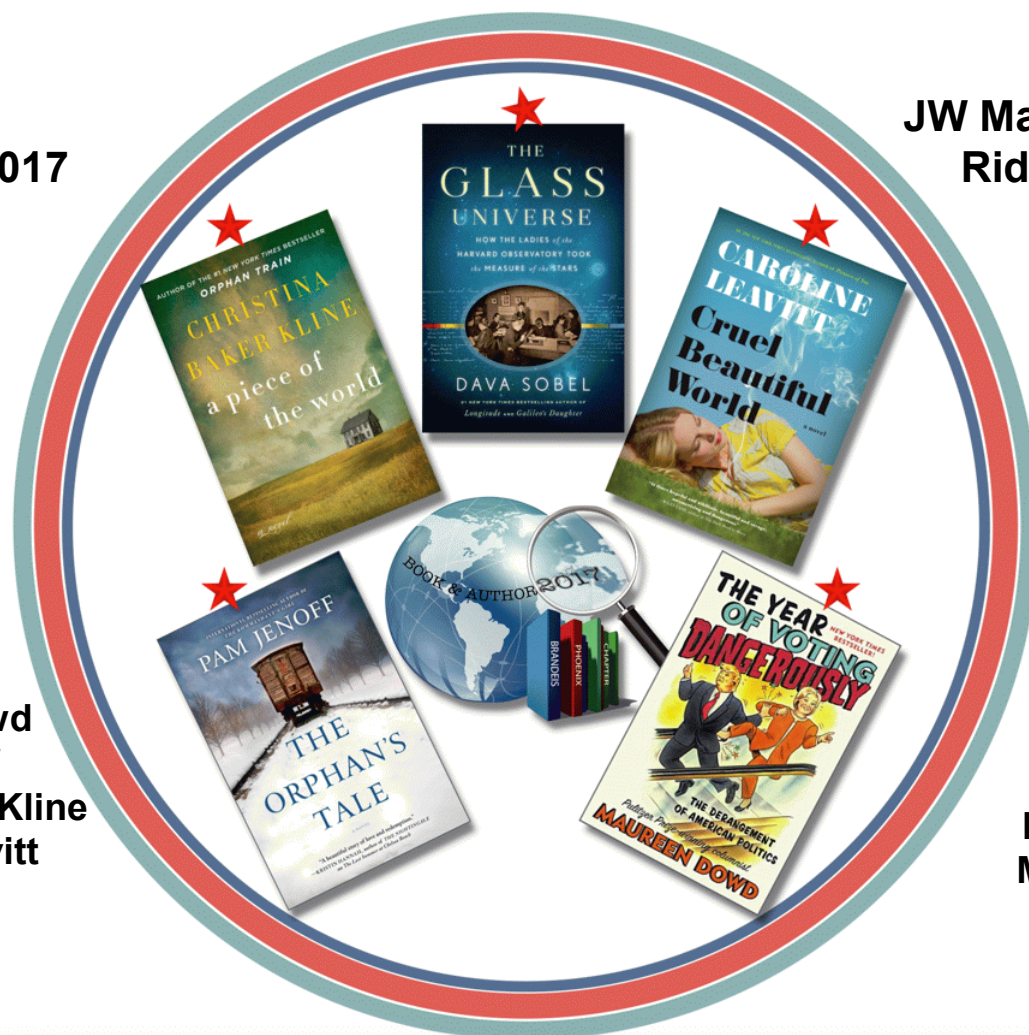
**MARCH 2017**

# 27th Annual BNC Phoenix Book & Author

## OUR STAR-STUDDED LINEUP!

**Monday  
March 13, 2017**

**JW Marriott Desert  
Ridge Resort**



**AUTHORS:**  
Maureen Dowd  
Pam Jenoff  
Christina Baker Kline  
Caroline Leavitt  
Dava Sobel

**Moderator:**  
Mark Curtis

For more information, please contact Carol Abrams, Event Chair  
[bncphxba@gmail.com](mailto:bncphxba@gmail.com) 480-442-9623

Proceeds to benefit the Sustaining the Mind Fund: Research and Scholarships in Neurodegenerative Diseases

## CO-PRESIDENTS' MESSAGE

Dear Fellow Members:

For many of our members and a large part of the Phoenician community, the month of March means the event of the year: Brandeis Book and Author. This is the 27<sup>th</sup> year our chapter has held this exciting event.

Over 100 of our members have worked an entire year under the leadership of our Book and Author Chair, Carol Abrams, to make this day possible. From the day the date was chosen and the ballroom at the beautiful JW Marriott Desert Ridge Resort and Spa was secured, our members have worked diligently to make this day a success. Every detail from choosing the authors and the moderator to designing the invitations, programs and centerpieces, has been done with great care by our efficient committees. We have dealt with printers, vendors of boutiques and books, caterers, audiovisual professionals, and corporate donors to make this a perfect day.

Janis Lipman, our Bookmark Chair, and her committee have chosen a beautiful home in Paradise Valley to entertain our authors and special donors. It will be a lovely event and there is still time to make plans to attend.

We do all this with passion in an effort to raise money for Brandeis University's Sustaining the Mind Campaign. This fund helps finance scholarships, laboratory equipment, the building and the professors who, along with the students, are researching the causes of neurodegenerative diseases such as Alzheimer's, Parkinson's and autism.

If you have misplaced your invitation ([Click HERE](#)), there is still time to make a reservation. Our table captains, table arrangers, registrars and greeters will make sure that you are made to feel welcome at this wonderful event.

Looking forward to seeing you.

All our best,

Nancy Sacks-Goldberg and Iris Wigal, Co-Presidents



Table of Contents is interactive. [CLICK](#) on any page title. [CLICK](#) on any page number to return here.

### TABLE OF CONTENTS

27 <sup>TH</sup> Annual BNC Phoenix Book & Author Event . . . . .	1	Mah Jongg and Canasta Tournament Winners . . . . .	11
Presidents' Message . . . . .	2	Calendar I . . . . .	12
Book & Author Update and Pam Jenoff Bio . . . . .	3	Calendar II . . . . .	13
Bookmarks . . . . .	4	Calendar III . . . . .	14
Brandeis Boutiques . . . . .	5	Social Justice . . . . .	15
Spring Luncheon - Music in Bloom . . . . .	6	Save the Dates, Mission Statement . . . . .	16
Study Group News Looking Ahead . . . . .	7	Brandeis Happenings . . . . .	17
Study Group News II . . . . .	8	Sustaining the Mind, BNC Scholarship Campaign . . . . .	18
Membership . . . . .	9	Book Fund . . . . .	19
Open Meeting Photos and Thank You . . . . .	10	Board Meeting, Programming Meeting, Various . . . . .	20
		Board Contacts . . . . .	21



# Book & Author Update

## A new author joining us at Book and Author!

You might already know from the email sent to Chapter members that Linwood Barclay will not be attending our event this year. However we are delighted that Pam Jenoff, author of *The Orphan's Tale*, will be joining us.

### Pam Jenoff Bio



Pam Jenoff is the author of the international bestseller, *The Kommandant's Girl*, and is known for richly detailed historical fiction written with a deft touch that can be credited to her experience working at the Pentagon and also as a diplomat for the State

Department, handling Holocaust issues in Poland. Pam was born in Maryland and raised outside Philadelphia. She attended George Washington University in Washington, D.C., and Cambridge University in England. Upon receiving her Master's in history from Cambridge, she accepted an appointment as Special Assistant to the Secretary of the Army. The position provided a unique opportunity to witness and participate in operations at the most senior levels of government, including helping the families of the Pan Am Flight 103 victims secure their memorial at Arlington National Cemetery. After her work at the Pentagon, Pam moved to the State Department. In 1996 she was assigned to the

U.S. Consulate in Krakow, Poland. It was during this period that Pam developed her expertise in Polish-Jewish relations and the Holocaust.

Pam left the Foreign Service in 1998 to attend law school and graduated from the University of Pennsylvania. She worked for several years as a labor and employment attorney and now teaches law school at Rutgers.

In addition to *The Kommandant's Girl*, which was an international bestseller and nominated for a Quill award, she also wrote *The Winter Guest*, *The Diplomat's Wife*, *The Ambassador's Daughter*, *Almost Home*, *A Hidden Affair* and *The Things We Cherished*. She lives outside Philadelphia with her husband and three children.

Pam comes to us with her newest book, *The Orphan's Tale*, a story of friendship and survival seen through a traveling circus during World War II. It's about the relationship between two vastly different women: a Jewish circus aerialist and a teenage runaway with a baby. Jenoff did extensive research at Yad Vashem and was inspired by stories of the train of lost children and an actual German circus that harbored Jewish refugees.

Carol Abrams, Book and Author Chair 2017  
[bncphxba@gmail.com](mailto:bncphxba@gmail.com) (480) 442-9623



# Bookmarks

## Special Thanks to our Bookmark Donors!

This list is current as of the date of printing.

There is still time to become a Bookmark donor! Join us on Sunday evening, March 12<sup>th</sup>, at the Bookmark Cocktail Reception and enjoy a very special evening in a beautiful Paradise Valley setting, while at the same time supporting groundbreaking medical research at Brandeis University. Janis Lipman, Bookmark Chair

Carol & Chuck Abrams	Sandy & Mark Itkowitz	Gail Rineberg
Sue Adatto	Susan & Robert Karp	Myral Robbins
Judy & Leith Baletin	Carol & Allan Kern	Rona Rosenthal
Patricia Beran	Ellen & Bob Kirschenbaum	Paula Ross
Truda Chick	Ronda & Sheldon Kottle	Merle Roskam
Bonnie Clewans & Sam Summers	Judith Krockey	Lori & Steven Roth
Priscilla Cohen	Marcia Langer	Fran Sachs
Sheila Cohen	Cheryl Lennon	Susan Sacks & Jim Andrews
Sherrymae Cohen	Sara & Jay Leopold	Nancy Sacks-Goldberg
Jane & Chas Coleman	Judith Levine	Barbara Schlein
Paula Eckstein	Janis Lipman & Greg Altschuh	Rana Schwartz
Anita Evers	Joseph Logan	Kathy Simon
Arlene G. Feldman	Irene Lubin	Susan Sloan
Rosalyn Fischer	Andrea Markowitz	Becky Sostrin
Michelle & George Fischler	Beth & Jon Messer	Barbara & Mark Stern
Connie Flegenheimer	Esti Mitchell	Marcy Strauss & Wayne Stutzer
Sharon Gadless	Nancy & Larry Moffitt	Dorry & Harry Sunenshine
Harriet & Elliott Gartner	Donna Morris	Judy Sussman
Selma K. Glass	Andrea & Gary Morrison	Gail & Dan Tenn
Elaine Glazer	Ruth Anne Myers	Phyllis Topp
Beth Ladin & Lance Goldberg	Karen & Robert Nagle	Caryll & Gerald Webner
Joyce & Neil Goldstein	Sue O'Meara	Linda Weckstein
Joyce Grant	Sharon Polan	Iris Wigal
Georgia Heller & Denis Duran	Nancy Pollack	Roma Wittcoff
Ann Hintze	Joellyn Pollock	Barbara & Barry Zemel
Mimi Horwitz	Amy & Marvin Richman	Marilyn Zolondek

*Benefitting the Sustaining the Mind Fund for Research and Scholarships in Neurodegenerative Diseases*

**NEW RELEASES (\$100 - \$224)** Cocktail Reception only - invitation for one (does not include the luncheon)

**AUTHOR'S EDITION (\$225 - \$299)** One luncheon, Cocktail Reception invitation for one

**BEST SELLERS (\$300 - \$499)** One luncheon, Cocktail Reception for two

**CLASSICS (\$500 - \$749)** Two luncheons, Cocktail Reception for three

**FIRST EDITIONS (\$750 - \$999)** Two luncheons, Cocktail Reception for three and book of choice from a featured author

**RARE FINDS (\$1,000 - \$1,499)** Two luncheons, Cocktail Reception for three, book of choice from a featured author and dinner with the authors for one

**LIMITED EDITIONS (\$1,500 - \$3,499)** Two luncheons with preferred seating, Cocktail Reception for four, two books of choice from featured authors, dinner with the authors for two and membership in the Justice Brandeis Society

**SPECIAL EDITIONS (\$3,500 - \$4,999)** Two luncheons with preferred seating with an author, Cocktail Reception for four, all the books from featured authors, dinner with the authors for two and membership in the Justice Brandeis Society

**COLLECTOR'S EDITIONS (\$5,000 and above)** Two luncheons with preferred seating with an author, Cocktail Reception for four, all the books from featured authors, dinner with the authors for four, membership in the Justice Brandeis Society and one hotel room at JW Marriott Resort and Spa Sunday, March 12, 2017

Donors making a gift of **\$1,000 or more** in addition to the Fair Market Value of any of the levels described will be Members of the Justice Brandeis Society. Donors making a gift of **\$5,000 or more** in addition to the Fair Market Value of any of the levels described will be listed on the BNC's **Major Donor Tribute Wall** in the Library Foyer at Brandeis University. Matching, Foundation, Planned Gifts and all donations are gratefully accepted.





Enjoy a day of shopping at our fabulous boutiques at Book & Author! There are many old favorites and "new" vendors to choose from.

**Shopping hours ~ 9:00 - 3:30 pm**  
**Come early! Bring your friends!!**

---

**ARIZONA BEDSHEETS** - Egyptian cotton sheets, bamboo pillows and sheets, luxury bed throws all at affordable prices.

---

**CALLE ROSE TRAVELING BOUTIQUE** - Ladies clothing, accessories, jewelry ,bags, belts.

---

**CLASSY BAG LADY** - Great Handbags! All types, styles and colors to match your outfits.

---

**DEESIGNS BY DEEDEE** - One-of-a-kind handcrafted jewelry pieces, incorporating sterling silver, artisan glass, talavera and ethnic beads.

---

**GIRLY GIRLZ SCOTTSDALE** - Girly items: Darling shirts, jewelry, plush dolls. Baby: onesies, hairbands, blanket/bib/burp sets.

---

**GOTTA HAVE IT!** - A fun mix of clothing, shoes, jewelry, purses, and great gifts for your friends and family.

---

**HOSTESS GIFTS TO GO** - Beautiful melamine serving dishes - they look so real you will think they are glass or ceramic!

---

**JACQUELINE B** - Great women's casual wear - "Up to the Minute" clothing featuring sweatpants sets, t-shirts and ponchos.

---

**KAZZIE JEWELRY** - Handmade exquisite jewelry - semi precious stones, sterling silver and gold vermeil necklaces, bracelets and earrings.

---

**KIKI BEAN & BEDHEAD PAJAMAS** - Fabulous nightwear and robes for women, children and baby. Plush throws for all!

---

**MY FLING ACCESSORY** - Great wraps that can be worn differently and caps!

---

**ROBERTO MANTELLASSI** - Lush Italian leather products, plush cashmere, unique pearl necklaces and all fur-trimmed capes.

---

**SHELLEY'S FASHIONS** - Smart and stylish sweaters, tops, jackets, coats and more, more, more!

---

**STUDIO NICOLE** - Hand-beaded tabletop serving pieces for home and kitchen plus fun and funky gifts.

---

**THE TREASURED ACCESSORY** - Beautiful "of the moment" jewelry. Rhodium and 14 kt. Gold plating over sterling hoops, earrings, long and short necklaces, bangles and an extensive stackable ring collection.

---





## BNC-Phoenix Presents **Music in Bloom**

**Friday, April 28, 2017 ~ 11:30 am - 2:30 pm**  
**The McCormick - a Millennium Hotel**  
**7401 North Scottsdale Road, Scottsdale, AZ 85253**

Please join us for our fabulous spring luncheon at the McCormick Scottsdale, overlooking Camelback Lake, Camelback Mountain and the McCormick Ranch Golf Club. After the installation of the 2017-18 chapter officers and Board, we will be treated to a variety musical presentation by Shana Bousard and her father and accompanist, Joe Bousard. We are thrilled that the Bousards could join us to present what will be a very special event.



### **Shana Rebilas Bousard**

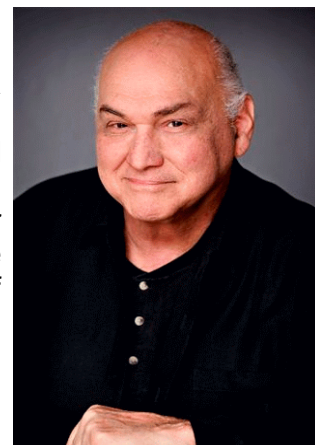
Shana has been professionally involved in music and theatre all of her adult life, and is a proud member of the Actor's Equity Association. She was a featured singer/dancer for Holland America and Regency Cruise lines, and has performed several cabaret acts in New York City, Wisconsin, and Arizona, as well as a solo vocal recital at Carnegie Hall. Since moving to AZ, Shana has performed for many local and national theatre companies and is an ariZoni Award-nominated actress/director. Her most recent roles include "Glinda" in *The Wizard of Oz*, "Mrs. Banks" in *Mary Poppins* at Phoenix Theatre and "Sally Bowles" in *Cabaret* at Theatre Artists Studio. Shana also claims

extensive commercial and voice-over credits. In addition to performing, Shana spends her time as a loving wife to Dominik and mother to Alexander and Emma, and currently works full time as a professional, board-certified music therapist.

### **Joe Bousard**

Joe has worked professionally in music and theatre for over 50 years. He has been a teacher/performer and coach of voice, acting and musical theatre. Joe was born in Boston, moved to Phoenix at age ten, and is a graduate of West Phoenix High School and Phoenix College. He received his BA degree in Speech Arts and Theatre from San Diego State College, where he performed and directed operas, plays and musicals. After a stint in the US Army where he furthered his musical career, he went to New York, where he continued honing his skills as accompanist and composer/lyricist for a variety of singers.

Joe has also written for children's television: his *Pied Piper* recently won an ariZoni Award for best score. Several of his award-winning musicals have been produced by Musical Theatre of Anthem. He is a member of Theatre Artists Studio, a non-profit organization in Paradise Valley, and has created and performed many cabarets and fundraisers for them. He also performs on stage and is still an active member of the Actor's Equity Association.





# Study Group News

## Looking Ahead

We have had the most successful Study Group season in our Chapter's history. The chapter continues to attract new members and a major part of that attraction is the availability of many and varied study groups in which to participate.

To continue this success, we need your help. As we begin to think of next season (yes, your Study Group Team is already looking ahead to next year) we are looking for facilitators with ideas for new groups. Ask yourself the following questions:

Is there anything you are specifically interested in seeing offered as a study group? (Note: we especially welcome input from our Men of Brandeis members.)

- ◆ Are you interested in starting a group (hiking? film? lunch?) that meets on Sunday?
- ◆ Would you enjoy participating in or leading a limited group discussion (4 sessions) on a favorite topic or activity?
- ◆ Do you have a special interest, talent or skill that you want to share with others?
- ◆ Are you a winter resident who wants to create a group (i.e weekly Mah-Jongg or Canasta) that starts later in the year?

**If you enjoy meeting new people, enjoy sharing your experiences with others, have special talents or interests that others would enjoy...**

### YOU CAN FACILITATE A STUDY GROUP!

(Training will be provided)

If you answered 'yes' to any of the questions above, you already have all you need to be a wonderful Study Group Facilitator. Choose an activity, the day, dates and times you'd like (we can help you with scheduling) and start a study group! You could ask a friend to co-facilitate the group with you. The rewards are many: interact with like-minded people in an activity that you already enjoy, see your efforts appreciated by your group participants and the entire Chapter, make new friends and most of all - HAVE FUN!

The time commitment is modest and in return, the approval, acclaim and admiration you receive is beyond measure.

For more information and to share your ideas for new groups, please contact the Study Group VPs at [phxstudygroups@gmail.com](mailto:phxstudygroups@gmail.com)

Susie Sacks and Ronee Siegel, Study Group VPs



# Study Group News

## Arizona Authors

**Monday, March 20<sup>th</sup>, 12:30 - 2:00 pm JCC, 12701 North Scottsdale Rd**

The speaker for March is Lisa Schnebly Heidinger. Lisa's affection for Arizona is as deep as her roots. Hearing as a small child that the town of Sedona had been named after her great-grandmother, Sedona Schnebly, Lisa became interested in Arizona pioneers and history. She's been in broadcast journalism, television reporting and has taught journalism. Lisa has also written for *Tucson*, *Tucson Lifestyle* and *Arizona Highways* magazines. She's written several books about Arizona, including *Tucson: The Old Pueblo*, *Images of America: Sedona* and a children's book called *The Three Sedonas*. Lisa has lived in several cities around Arizona, from Tucson to Flagstaff. She now resides in Phoenix with her husband, two children and two dogs.



**RSVP - Merrill Kalman [mskbflo@aol.com](mailto:mskbflo@aol.com) Guests are welcome - \$5.00**



## Men of Brandeis (MOB)

**Wednesday, March 15<sup>th</sup>**

Men of Brandeis will meet at the JCC on Scottsdale Road for a nosh at the coffee shop and then move to a meeting room at 1:00 pm to hear the guest speaker, Dr. Richard Ellen.

Dr. Ellen, Professor Emeritus, University of Toronto, Faculty of Dentistry will be speaking on various aspects of the overall research community both in the United States and Canada, as he has enunciated below. Before retiring, he was a university-based clinician-scientist specializing in biomedical research in infection and immunity. He understands this process, having had his research funded through competitive federal grants continuously over 40 years, beginning in 1973. Examples of some of the key trainee-support programs of the U.S. National Institutes of Health (NIH) in Bethesda Maryland, and the Canadian Institutes of Health Research will be highlighted.

The discussion will focus on how government health research agencies have instituted support strategies for educating their country's most promising research trainees, with emphasis on special skills required for leading-edge careers that are both collaborative and competitive in the international arena. Participants should feel free to question and/or discuss how these funding strategies may reflect the internal politics and the international expectations of the respective countries. Yet, the main questions for discussion should be: 1) What is the 'right stuff' needed to become an international leader in health research today/tomorrow? 2) What should government agencies do to promote the health research career aspirations of the best and brightest?

Dr. Ellen serves as a member of numerous peer review and site-visit committees for research, fellowships, research grants and research centers, such as the U.S. National Institutes of Health at [www.nih.gov](http://www.nih.gov).

**For more information, please contact the facilitators:**

**Leith Baletin [lbaletin@att.net](mailto:lbaletin@att.net) 480-874-9434 Sam Summer [samsummeraz@yahoo.com](mailto:samsummeraz@yahoo.com) 480-488-1540**

For details and to sign up for these and other study groups, see the Study Guide, the Mid-Year Group Details and the Registration Form on our website: [www.brandeisphoenix.com/StudyGroups.html](http://www.brandeisphoenix.com/StudyGroups.html)

If you have an idea for a Study Group you wish to facilitate, please contact the Study Groups VPs.

**Study Group Vice-Presidents: Susie Sacks and Ronee Siegel**  
[phxstudygroups@gmail.com](mailto:phxstudygroups@gmail.com)



### MEMBERSHIP CONTACTS

To report life-cycle events please contact

Susan Sacks at 480-860-5256 or [susan.sacks@gmail.com](mailto:susan.sacks@gmail.com)

To learn about becoming a member, please contact

Nan Waldman at 602-410-5639 or [nanlarry@cox.net](mailto:nanlarry@cox.net)

## Membership News

- ✿ Congratulations to past president, Roz Fischer, on the birth of her great-granddaughter, Zosia Rose.
- ✿ Congratulations to Carol and Dan Reynolds on the birth of their granddaughter, Petra Rafaela Reynolds.
- ✿ We wish a speedy recovery to Carol Fink.
- ✿ We wish a speedy recovery to Roberta Scharf.
- ✿ Our sincere condolences to the family of Bernice "Bunny" Shier Emont on her passing.
- ✿ Our sincere condolences to Gloria Sappol on the passing of her beloved husband, Hartley.

## New and Rejoining Members

Helen Abrams, Audrey Agasi, Tina Arkoff, Linda Blackstone, Cheryl Engel, Bette Feinerman, Ellen Frankel, Marilyn Goldfein, Pamela Hirschfield, Lia Lynn, Donna Pleason, Geri Sherman, Jackie Schwartz, Arlene Taman, Linda Ullman, Robert Ullman



### Brandeis Ambassador: You Ask! We Listen!

Are you new to our Brandeis Chapter and you aren't sure which Study Group to select? Or, perhaps you are considering volunteering for the Book and Author Luncheon because your talents lie in decorations or favors? We want every Brandeis member to feel comfortable attending every event offered by our Brandeis Chapter. The Ambassadors are there to help you enjoy the Brandeis Experience.

#### THE AMBASSADORS LISTED BELOW ARE HERE FOR YOU:

Terriann Kleiner	<a href="mailto:tkleiner@gmail.com">tkleiner@gmail.com</a>	314-761-3132
Sheila Landau	<a href="mailto:buildor2@cox.net">buildor2@cox.net</a>	602-809-5100
Brina Pepper	<a href="mailto:peppersells@cox.net">peppersells@cox.net</a>	480-483-7875
Nan Waldman	<a href="mailto:nanlarry@cox.net">nanlarry@cox.net</a>	602-410-5639
Marti Zelikoff	<a href="mailto:movienut47@gmail.com">movienut47@gmail.com</a>	773-213-9101

### MEMBERSHIP VICE PRESIDENTS

Leith Baletin  
[lbaletin@att.net](mailto:lbaletin@att.net)  
480-874-9434

Nan Waldman  
[nanlarry@cox.net](mailto:nanlarry@cox.net)  
602-410-5639





## Open Meeting in the Spirit of Valentines' Day



Thank you to BNC Phoenix member Jan Krulick-Belin for a wonderful presentation related to her book *Love, Bill: Finding My Father through Letters from World War II*. Jan's talk was preceded by some of our members reciting classic poetry selections as an introduction to the topic *Love, Bill*.

For more information, contact Jan: [JanKrulick@aol.com](mailto:JanKrulick@aol.com) [JanKrulick.com](http://JanKrulick.com)



Delicious



A 'Full House' enjoys Jan's talk!

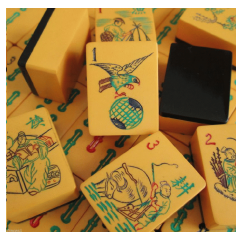


**Thank You to the following for helping  
To make our Open Meeting a success!**



Carol Abrams, Stephanie Altman, Michelle Fischler, Bruce Galin, Sandy Itkowitz, Sue Karp, Sheila Landau, Sara Leopold, Judy Levine, Andie Morrison, Brina Pepper, Joellyn Pollock, Lori Roth, Nancy Sacks, Susie Sacks, Harriet Schwartz, Gail Tenn and Nan Waldman





## MAJ JONGG TOURNAMENT WINNERS FEBRUARY 4, 2017

First Place Rita Getner  
Second Place Stacy Zimmerman  
Third Place Anita Brenner



L-R: Co-chair Dorry Sunenshine, Stacy Zimmerman, Rita Getner, Anita Brenner, Co-chair Lori Roth



## CANASTA WINNERS FEBRUARY 11, 2017

First Place Rita Getner and Fran Preston  
Second Place Sue Shatz and Barbara Gluck  
Third Place Abbey Sussholz and Pamela Hirshfield



L-R: Sue Shatz, Fran Preston, Rita Getner, Co-chair Lori Roth, Pamela Hirschfield, Barbara Gluck, Abbey Sussholz



The cleanup crew for BNC Phoenix Chapter who returned the McDowell Center to pristine condition after the Canasta Tournament and Lunch.

Lori Roth, Harriet Schwartz,  
Helen I. Abrams, and Laurie Greenfield

Thank you to all participants for attending the day and their donation to the BNC Phoenix Chapter Scholarship Fund.

## \*SPECIAL NOTE ABOUT FULL GROUPS:

Even a group that has reached its maximum participation may have openings from time to time - if you are interested in a particular group, contact the facilitator(s) to see if space is available. Very often there is! Look in the monthly calendar pages below for group details, which include contact information for the facilitators. A \$5 guest fee will apply.

MAR	GROUP	TIME	STUDY GROUP NOTES	FACILITATORS
TBD	GIRLS' NIGHT OUT	TBD	Have a wonderful time with "just the girls." Details will be emailed to participants.	Nancy Kronenberg <a href="mailto:ngolden1@hotmail.com">ngolden1@hotmail.com</a> 216-798-5222
TBD	PHOENICIANS OF BNC	TBD	The group meets monthly for a potpourri of activities, primarily in Central Phoenix locations. Details will be emailed to group participants.	Joellyn Pollock <a href="mailto:joellyn_pollock@yahoo.com">joellyn_pollock@yahoo.com</a> 602-257-4327 Mickey Leonard <a href="mailto:mllphx@cox.net">mllphx@cox.net</a> 602-459-6972 Terry Taubman <a href="mailto:terrytaubman@gmail.com">terrytaubman@gmail.com</a> 602-319-8351
1	DON'T WORRY, BE HAPPY	5:00 pm	Meet new friends and sample some of the Valley's outstanding watering holes. The place, time and details will be emailed to participants.	Cheryl Lennon <a href="mailto:clennon60@gmail.com">clennon60@gmail.com</a> 602-999-8858
2 16	INTERMEDIATE HIKING CLUB	Start 7:00 - 9:00	Hike challenging 4-6 miles trails with elevation gains and at a brisk pace. This group is not meant for the beginner or leisure hiker. Join us after the hike at a different brunch spot each time. Members will be notified prior to each hike of place and time.	Nancy Siefer <a href="mailto:n.siefer@gmail.com">n.siefer@gmail.com</a> 480-577-1439 Caryll Webner <a href="mailto:caryllwebner@yahoo.com">caryllwebner@yahoo.com</a> 602-989-1348
2 9 16 23 30	INTERMEDIATE MAH JONGG**	11:45 for lunch; play begins at 12:15.	This group is intended for intermediate/ experienced players with thorough knowledge of the National Mah Jongg League rules and a steady pace of play. Meet at the JCC every Thursday.	Beth Sennett <a href="mailto:basennett@gmail.com">basennett@gmail.com</a> 414-418-4203
2	JEWISH BOOK GROUP **	10:00	RSVP to Ellen for each meeting. For the complete list of books, call Ellen.	Ellen Tuckman 602-953-9307
2 16	LEARN CHINESE MAH JONGG!	1:30	Chinese Mah Jongg is a game of skill, strategy, calculation (and luck!) that originated in China. The location details will be emailed to the group.	Abby Tucker <a href="mailto:skyranch52@gmail.com">skyranch52@gmail.com</a> 917-816-8261 John Poremba
2 16	LEISURE HIKING	Start 8:00 or 8:30	These 2.5 - 4 miles hikes in Phoenix, Scottsdale and beyond will be at a comfortable pace. After the hike, join us for breakfast at a nearby restaurant. Members will be notified prior to each hike of place, time and directions.	Ellen Kirschenbaum <a href="mailto:ellenk102@cox.net">ellenk102@cox.net</a> 602-214-5212 Bob Kirschenbaum <a href="mailto:bobkirschenbaum@gmail.com">bobkirschenbaum@gmail.com</a> 602-614-5212
2	SUN LAKES POTPOURRI	1:00	Contact the facilitators for the location.	Irene Kestenbaum <a href="mailto:irenek0426@gmail.com">irenek0426@gmail.com</a> 480-883-7639 Barbara Gold <a href="mailto:bzgold9333@gmail.com">bzgold9333@gmail.com</a> 480-802-7945
3	FRIDAY MATINEE MOVIE & LUNCH		View interesting movies playing at the Harkins Shea 14, the Harkins 101 or the Harkins Camelview. Lunch and casual conversation follows at a nearby eatery. Details will be emailed to participants.	Roni Nassberg <a href="mailto:ronika1@aol.com">ronika1@aol.com</a> 480-488-4476 Stephanie Klopfer <a href="mailto:rednoz@aol.com">rednoz@aol.com</a> 480-251-0815
3	THE WORLD OF INTERIOR DESIGN	11:00	Join professional designer Sheila Landau on field trips to explore the latest home products in various showrooms in the Scottsdale Airpark. The field trips will be followed by lunch. Location details will be emailed to participants.	Sheila Landau <a href="mailto:buildor2@cox.net">buildor2@cox.net</a> 602-809-5100
7	CURRENT EVENTS	10:30	Join our lively conversation as we explore current events that shape the future of the world in which we live. Participants will be notified of the location by email.	Gladys Simon <a href="mailto:gladsi26@hotmail.com">gladsi26@hotmail.com</a> 480-773-7958 Stephanie Klopfer <a href="mailto:rednoz@aol.com">rednoz@aol.com</a> 480-251-0815 Amy Richman <a href="mailto:amy@richmanfamily.com">amy@richmanfamily.com</a> 480-664-6901

MAR	GROUP	TIME	STUDY GROUP NOTES	FACILITATORS
7 14 21 28	MAH-JONGG FOR ADVANCED BEGINNERS	1:30	Expand your skills and meet new friends in the process, Congregation Beth Israel in the library (56th and Shea).	Ellen Widoff <a href="mailto:ebwidoff@gmail.com">ebwidoff@gmail.com</a> 602-513-3138 Terry Taubman <a href="mailto:terrytaubman@gmail.com">terrytaubman@gmail.com</a> 602-319-8351
7	YOGA	8:30	This all-levels class is for first-timers as well as experienced practitioners. Location details will be emailed to participants.	Nancy Siefer <a href="mailto:n.siefer@gmail.com">n.siefer@gmail.com</a> 480-577-1439
8 22	ACTING IS FUN!	10:30	Read skits which regale the trials and tribulations and joys of life, play theatre games, and explore how characters are created on stage and in film. Location details will be mailed to group members.	April Feld Sandor <a href="mailto:afsplays@gmail.com">afsplays@gmail.com</a> 215-882-2600
8 22	KNIT A MITZVAH	1:00	Knitting/crocheting and kibitzing two afternoons a month will be a stitch. We meet at a location convenient to Scottsdale and Shea.	Ellen Kirschenbaum <a href="mailto:ellenk102@cox.net">ellenk102@cox.net</a> 602-214-5212 Ronee Siegel <a href="mailto:ronees@aol.com">ronees@aol.com</a> 917-273-0393
8	MEN OF BRANDEIS (MOB)	12:00	Dr. Richard Ellen will speak to us on US and Canadian government health research agencies. Held at the JCC, Scottsdale Rd. <a href="#">Click HERE</a> for more information	Leith Baletin <a href="mailto:lbaletin@att.net">lbaletin@att.net</a> 480-874-9434 Sam Summer <a href="mailto:samsummeraz@yahoo.com">samsummeraz@yahoo.com</a> 480-488-1540
9	BOWLING FOR FUN	10:00	This group will meet at Brunswick Via Linda Lanes to bowl just for fun, followed by lunch. The lanes are located at 9027 E. Via Linda, Scottsdale 85258.	Sheila Landau <a href="mailto:buildor2@cox.net">buildor2@cox.net</a> 480-998-8999 Sue Lawler <a href="mailto:suelawler9@gmail.com">suelawler9@gmail.com</a> 480-502-9036
10	SOUP'S ON!!!!	10:30	Experience three different soups per session along with a tasty garnish demonstration. Participants will be notified of the meeting location by email.	Beth Reisman <a href="mailto:breism@cox.net">breism@cox.net</a> 480-488-9883 Lynn Kahn <a href="mailto:lynnkahn@ymail.com">lynnkahn@ymail.com</a> 480-998-0387 Jane Kuznitsky <a href="mailto:cashew3@cox.net">cashew3@cox.net</a> 480-595-9787 Iris Wigal <a href="mailto:wiggley@cox.net">wiggley@cox.net</a> 602-274-8771
14	SECOND TUESDAY LUNCH BUNCH		Join in the discovery of new culinary experiences and enjoy dining with new friends and familiar tablemates. You must reply to the facilitator to secure a place at the table. Details are emailed to participants.	Andrea Morrison <a href="mailto:andsue1@cox.net">andsue1@cox.net</a> 602-840-8195 Harriet Kaplan <a href="mailto:hskaplan@cox.net">hskaplan@cox.net</a> 480-585-1777
15	NEIGHBORHOOD WALKS	2:00	Join us for a moderately paced walk in and around one of the Phoenix/Scottsdale unique neighborhoods. Participants will be notified of the location by email.	Marcy Strauss <a href="mailto:mss29@comcast.net">mss29@comcast.net</a> 612-710-6291
16	BOOKS FOR THE ARMCHAIR TRAVELER	10:00	This group reads books that take place in foreign locales. Location details will be emailed to participants.	Barbara Stern <a href="mailto:sternbts@gmail.com">sternbts@gmail.com</a> 540-664-3106 Tricia Beran <a href="mailto:tricia@beran.net">tricia@beran.net</a> 480-229-5668
16	CONTEMPORARY ISSUES DISCUSSION GROUP #2 **	9:30	Join our lively conversation as we explore current events that shape the future of the world in which we live. Location details will be emailed to participants.	Janis Lipman <a href="mailto:janislipman@gmail.com">janislipman@gmail.com</a> 203-216-0177 Joyce Goldstein <a href="mailto:joyce@goldstein.us">joyce@goldstein.us</a> 480-307-9300
17	CULTURAL SITES IN AZ	11:00	Visit the <i>Mystery Castle</i> . Facilitators will notify members of the details by email.	Joyce Goldstein <a href="mailto:joyce@goldstein.us">joyce@goldstein.us</a> 480-307-9300 Gladys Simon <a href="mailto:gladysi26@hotmail.com">gladysi26@hotmail.com</a> 480-773-7958



MAR	GROUP	TIME	STUDY GROUP NOTES	FACILITATORS
20	ARIZONA AUTHORS SPEAKER SERIES	12:30	The speaker is Lisa Schnebly Heidinger. Held at the JCC, 12701 N. Scottsdale Rd, Scottsdale 85254. RSVP to Merrill to assure a seat. <a href="#">Click HERE</a> for more information	Merrill Kalman <a href="mailto:mskbflo@aol.com">mskbflo@aol.com</a> 480-296-3355
21	BRIDGING IT!	11:30	Experienced bridge players meet for a fun afternoon of lunch, bridge and camaraderie. Participants will be notified of the location.	Nan Waldman <a href="mailto:nanlarry@cox.net">nanlarry@cox.net</a> 602-410-5639 Marcy Strauss <a href="mailto:mss29@comcast.net">mss29@comcast.net</a> 612-710-6291
21	CAMELVIEW, SHEA 14 REVIEW AND LUNCH	TBD	Enjoy a thought-provoking movie each month followed by a discussion and lunch at a nearby restaurant. Details will be emailed to participants.	Sheila Landau <a href="mailto:buildor2@cox.net">buildor2@cox.net</a> 480-998-8999 Henriette Hasley <a href="mailto:henriette.hasley@cox.net">henriette.hasley@cox.net</a> 602-494-1924
21	LET'S GET CREATIVE	10:30	Make a crystal ball and leather tassel. The location will be provided to members of the group.	Cheryl Senkfor <a href="mailto:senk4@aol.com">senk4@aol.com</a> 216-272-1697
22	FOURTH WEDNESDAY LUNCH BUNCH **	11:30	Enjoy friendship and camaraderie at a variety of restaurants around the Valley. The location will be announced to the members. RSVP to the facilitators in order to secure a place at a table.	Annette Kurland <a href="mailto:annetekurland@me.com">annetekurland@me.com</a> 516-236-6271 Marcy Strauss <a href="mailto:mss29@comcast.net">mss29@comcast.net</a> 612-710-6291
22	PHOENIX ART MUSEUM TOURS	11:30	Join docent and Brandeis member Mark Sendrow in touring Museum featured exhibits. Details will be emailed to the participants.	Mark Sendrow <a href="mailto:wmsendrow@gmail.com">wmsendrow@gmail.com</a> 602-307-5420
22	PLAY GOLF	1:00	Play at Silverado. RSVPs must be finalized on the Monday prior to the golf date. Details of time and location will be emailed to participants.	Lori Roth <a href="mailto:lori.rothaz@gmail.com">lori.rothaz@gmail.com</a> 480-310-1605 Laurie Greenfield <a href="mailto:lauriecgreenfield@gmail.com">lauriecgreenfield@gmail.com</a> 312-316-8800
23	CONTEMPORARY ISSUES DISCUSSION GROUP #1	9:30	Join our lively conversation as we explore current events that shape the future of the world in which we live. Location details will be emailed to participants.	Ruth Anne Myers <a href="mailto:ramyers@aol.com">ramyers@aol.com</a> 480-947-8216
23	NEIGHBORHOOD HAUNTS	11:30	Join us for lunch as we sample four best-kept secret locales This is a wonderful chance to meet new people in a fun setting! Cash is preferred	Iris Wigal <a href="mailto:wiggley@cox.net">wiggley@cox.net</a> 602-274-8771 Gail Tenn <a href="mailto:gdtenn@hotmail.com">gdtenn@hotmail.com</a> 480-513-8462 Sara Leopold <a href="mailto:sara1225@gmail.com">sara1225@gmail.com</a> 480-359-5599
25	AT THE BALLET	2:00	Enjoy the ballet <i>Today's Masters</i> . For more information, see the website: <a href="http://www.balletaz.org">www.balletaz.org</a> . Car pools will be arranged. Contact the facilitator for details.	Sheila Berkowitz <a href="mailto:sberk327@cox.net">sberk327@cox.net</a> 480-451-5229
27	B-PUZZLED: MYSTERY & SUSPENSE	1:00	This book group will focus on Mystery & Suspense. It meets at 18 Degrees, the restaurant in the Ice Den, 9375 East Bell Rd, Scottsdale.	Andi Freed-Krehbiel <a href="mailto:readerpainter@gmail.com">readerpainter@gmail.com</a> 480-221-9777 Alyce Helfman <a href="mailto:ahelfman2002@yahoo.com">ahelfman2002@yahoo.com</a> 480-264-6909
28	ETHNIC DINING	11:30	Join us for lunch as we venture around the world, savor regional cuisine and experience the distinct flavors of four unusual ethnic restaurants in the Valley. Details for each restaurant will be sent to participants in advance of the meeting date.	Michelle Fischler <a href="mailto:michellelyules@gmail.com">michellelyules@gmail.com</a> 602-667-0313 Ellen Kirschenbaum <a href="mailto:ellenk102@cox.net">ellenk102@cox.net</a> 602-214-5212

# Social Justice



## Carol B' s Children' s Book Collection

We continue to collect new and gently used children's books for local elementary schools.

For more information, please contact:  
Dorry Sunenshine [dsunenshine@gmail.com](mailto:dsunenshine@gmail.com)  
Ellen Kirschenbaum [ellenk102@cox.net](mailto:ellenk102@cox.net)

*"Oh, magic hour, when a child first knows she can read printed words!"  
– A Tree Grows in Brooklyn, 1943*



## Just 3 Things

Jewish Family and Children's Services (JFCS)  
*Real World Job Development and Youth In Transition* programs.

Help JFCS stock the **Just 3 Things** food pantry by donating non-perishable food items to provide needy youth with food as they transition from foster care to independence.

Please visit the website for recommended items. <http://www.jfcsaz.org/>

Ellen Kirschenbaum  
[ellenk102@cox.net](mailto:ellenk102@cox.net)

## Knit A Mitzvah



As part of the Chapter's Social Justice activities, if you can knit or crochet, we can use your help in making newborn baby caps. The patterns and yarn are free – donated by Honor Health/Scottsdale Shea Medical Center – and we bring the completed caps to them. The caps are small and very easy to make.

If you are experienced or just a novice and want to participate in this effort, please contact:

Ronee Siegel at [ronees@aol.com](mailto:ronees@aol.com)  
(917-273-0393) for more information.



**Sunday, March 12, 2017**

**BOOK & AUTHOR  
BOOKMARK DONOR COCKTAIL  
RECEPTION**

**Monday, March 13, 2017**

**27<sup>TH</sup> ANNUAL BOOK & AUTHOR EVENT  
at the Marriott Desert Ridge**

**Friday, March 31, 2017, 1:00 - 3:00 PM**

**NEW MEMBER SOCIAL**

**Friday, April 28, 2017**

**SPRING LUNCHEON  
at the McCormick Scottsdale  
Hotel and Resort**

## Privacy?

### We Value Your Privacy

All directories, phone numbers and email addresses shared with our members for the use of Brandeis business shall remain confidential. and not be shared with other organizations.

## Mission Statement

Brandeis National Committee is dedicated to providing philanthropic support to Brandeis University, a distinguished liberal arts and research university founded by the American Jewish community. Its membership is connected to the University through fundraising and through activities that reflect the values on which the University was founded: academic excellence, social justice, nonsectarianism and service to the community.



## Women's Seder

**Tuesday, March 28**

**11:00 am - 1:00 pm**

**Valley of the Sun, Jewish Community Center,  
12701 N Scottsdale Rd, Scottsdale, AZ 85254**

Join more than 100 women from the community as we come together for our annual Women's Seder led by Rabbi Elana Kanter. M/JNM: \$45.



# Exploring Boston's hidden sacred spaces

## From BrandeisNow, February 2017

### Professor Wendy Cadge is shining a light on the chapels and prayer rooms tucked away in the corners of the city

Aside from their relative closeness on a map, Logan International Airport, the Massachusetts Correctional Institution in Norfolk and the Prudential Center all have something else in common: Each has a designated sacred space for prayer, reflection and tranquility.

Wendy Cadge, professor of sociology and women's, gender and sexuality studies, has been working to document these places and others like them - more than 50 in all - for a project launched last year called "Boston's Hidden Sacred Spaces." The research has led to unusual discoveries and stunning photographs by her collaborator, Boston-based professional photographer Randall Armor. These spaces run the gamut: Some are opulent and prominently placed; others are tucked away and austere.

While some remain much as they were built, others have been refitted - or sometimes simply renamed - to be more inclusive.

The Wolfson Chapel at Beth Israel Deaconess Medical Center, for example, was originally a Jewish chapel but was recently renovated to become an interfaith space. Now, along with its original stained glass windows, there is a tabernacle for Catholic communion and a sign pointing to Mecca. Rather than removing all religious symbols when the space was renovated, the hospital's Advisory Committee on Religious Diversity opted to add new ones to recognize the range of religious practice among its staff as well as patients and families.

"When you start to look at these spaces over time, many have changed," Cadge said. "To me this is a story about how and where religion and spirituality have been present in Boston and how the city has changed with waves of immigrants." It is also a story of religion around the city's edges - in the chapel on Peddocks Island in Boston harbor; in the seaport in

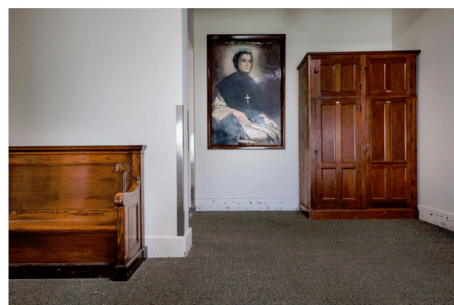
several spaces; and at the modernist Erich Lindemann Mental Health Centerbuilding in Boston's Government Center.



The entrance to the Peddocks Island Chapel in Boston Harbor Islands National Recreation Area.  
Photos/Randall Armor, courtesy of Boston's Hidden Sacred Spaces



Inside Wolfson Chapel at Beth Israel Deaconess Medical Center.



The hallway outside of what was formerly a chapel in Spaulding Rehabilitation Hospital in Cambridge.



Saint Francis Chapel, located inside the Prudential Center in Boston.

Some spaces changed to reflect diversifying of religious beliefs in the region, while others changed because the institution that housed them changed. What is now Spaulding Rehabilitation Hospital in Cambridge was once Youville Hospital & Rehabilitation Center, a Catholic hospital. When it was purchased and renovated by Spaulding in 2009, its chapel was converted into a conference room. Its old pews and cabinets sit out in the hall. A meditation room, long a part of the building, remains open by the main entrance.

"You can see the history of these institutions through changes in these spaces," Cadge said.

The project had its beginnings in a Radcliffe Institute Exploratory Seminar, "Sacred Spaces in a Secular Nation of Believers" organized by Cadge, Wellesley College Professor Alice Friedman and Karla Johnson, an architect who designed the multi-faith space at Tufts University. After Johnson died in 2016, Cadge and Friedman continued the project in her honor, recruiting Armor to join their team. Research for the project has been funded by grants from Brandeis and Wellesley College, and through support from The Theodore and Jane Norman Fund For Faculty Research and Creative Projects at Brandeis. The Hidden Spaces Project also recently received a grant from Mass Humanities that will allow the project to develop a traveling exhibition featuring photos and research from the sacred spaces.

Cadge and Friedman are also looking into other possible ways to promote the project, such as a more expansive exhibit and online tools that could make the research more accessible.

"We would like the audience for this to be the people of greater Boston," Cadge said. "We're open to suggestions about how to best share these images and stories throughout the city."

Since 1948, BNC members have raised more than \$131 million to support Brandeis students, faculty, the library and cutting-edge research in neuroscience.

**Sustaining  
the Mind Fund:  
Research  
and Scholarship  
in  
Neurodegenerative  
Diseases**

**Sherrymae Cohen to Paul Alamar Family  
In memory of Paul Alamar**

**Nancy Sacks-Goldberg & Stu Goldberg to  
Alan Kris and Family  
In memory of Gloria Kris**

To support the Sustaining the Mind Fund, [click HERE](#)  
for a donation form.

Ronda Kottle [ronda@kottlehome.com](mailto:ronda@kottlehome.com)

Minimum donations \$25, please.

A card will be sent to your honoree.



**Nancy Sacks-Goldberg to Ronda & Sheldon Kottle  
In honor of the birth of Francine Lea Soper**

Since our earliest days, the Brandeis National Committee has stood as a resolute partner with the University. Financial assistance plays a pivotal role in upholding Brandeis' founding principle of equal access to higher education, regardless of a student's financial circumstance. Scholarships ensure that the best and brightest students are able to pursue an education at this unique institution.

Brandeis is committed to ensuring that it meets the financial needs of its students. Endowed scholarship funds, which provide a consistent, dependable funding source, are required to accomplish this.

To support the BNC Scholarship campaign, [click HERE](#) for a donation form.

Ronda Kottle, [ronda@kottlehome.com](mailto:ronda@kottlehome.com)

Minimum donations \$25, please. A card will be sent to your honoree.

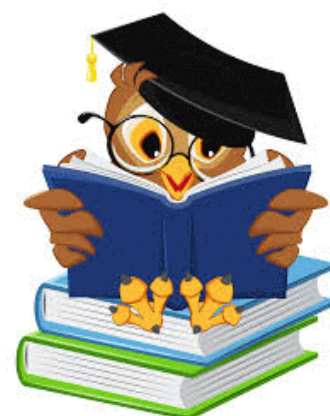


# Book Fund

For all your Book Fund needs, contact: Phyllis Becker,  
9199 N. 107<sup>th</sup> St., Scottsdale, AZ 85258  
480-838-1210 [psb830@gmail.com](mailto:psb830@gmail.com)

We accept credit card donations, Visa or MasterCard  
only for orders of \$10 or more.

For a donation form and additional information, [Click HERE](#)



## Donor

## Recipient

## Occasion

### Research Journal

Arlene & Irving Feldman

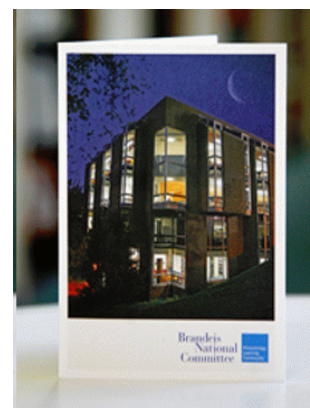
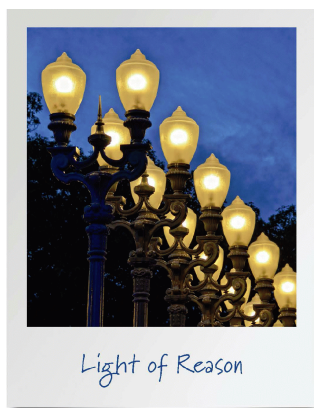
Roz Fischer

In honor of birth of great granddaughter, Zoe Rose

Intermediate Hiking Club

Barbara Garber

In memory of mother, Margie Lowan

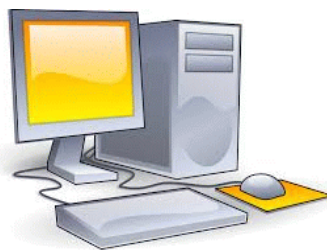


## DID YOU KNOW?

You can establish a Book Fund Savings Account!  
The Account allows you to send Book Fund  
Tributes with ease.

For more information contact Phyllis Becker.  
480-838-1210 [psb830@gmail.com](mailto:psb830@gmail.com)





## CHAPTER ROSTER

If you have recently moved, or changed your phone number or email address, please let Bruce Galin, our Chapter's Data Manager, know of those changes. [bruce.phxbnc@gmail.com](mailto:bruce.phxbnc@gmail.com). This will ensure you don't miss out on any Chapter mailings and information.

## CHAPTER MEMBERSHIP ROSTER AVAILABLE

The chapter membership roster is now available online by request. You must have an email address for us to provide secure access. Please send your request to Bruce Galin at [bruce.phxbnc@gmail.com](mailto:bruce.phxbnc@gmail.com). You will be notified when your access is available.



## BOARD MEETING

Did you know that all Chapter Board meetings are open to our members? You are welcome to join us the third Wednesday of every month (except for our July and August hiatus) at 10:30 am. If you are interested in attending, email either of our chapter presidents to let them know you are coming and for driving directions.

Nancy-Sacks Goldberg [nhshobo@aol.com](mailto:nhshobo@aol.com)  
Iris Wigal [wiggley@cox.net](mailto:wiggley@cox.net)

### BNC PHOENIX BOARD AND COMMITTEE CALENDAR

March 1	Executive Committee Meeting
March 6	Program Committee Meeting
March 15	General Board Meeting
March 27	Membership Committee Meeting



## PROGRAMMING MEETING

Planning has begun on a variety of great events this coming season. Attend the Programming Meeting the 1<sup>st</sup> Monday of each month.

Join a great committee and make new friends as we work on the details of our upcoming events.

For meeting locations, RSVP to:  
[sandy.itkowitz@gmail.com](mailto:sandy.itkowitz@gmail.com)  
VP of Programming 480-650-6779

## BNC PHOENIX CHAPTER BOARD MEMBERS 2016-17

Co-President	Nancy Sacks	<a href="mailto:nhshobo@aol.com">nhshobo@aol.com</a>	(480) 299-1792
Co-President	Iris Wigal	<a href="mailto:wiggley@cox.net">wiggley@cox.net</a>	(602) 274-8771
VP Membership	Leith Baletin	<a href="mailto:lbaletin@att.net">lbaletin@att.net</a>	(480) 874-9434
VP Membership	Nan Waldman	<a href="mailto:nanlarry@cox.net">nanlarry@cox.net</a>	(602) 410-5639
VP Programming	Sandy Itkowitz	<a href="mailto:sandy.itkowitz@gmail.com">sandy.itkowitz@gmail.com</a>	(480) 650-6779
VP Study Groups	Susan Sacks	<a href="mailto:susan.sacks@gmail.com">susan.sacks@gmail.com</a>	(480) 860-5256
VP Study Groups	Ronee Siegel	<a href="mailto:ronees@aol.com">ronees@aol.com</a>	(917) 273-0393
VP Fundraising	Lori Roth	<a href="mailto:lori.rothaz@gmail.com">lori.rothaz@gmail.com</a>	(480) 664-3312
VP Leadership Training	Joellyn Pollock	<a href="mailto:joellyn_pollock@yahoo.com">joellyn_pollock@yahoo.com</a>	(602) 254-4092
VP Strategic Planning	Sara Leopold	<a href="mailto:sara1225@gmail.com">sara1225@gmail.com</a>	(480) 525-1575
VP Strategic Planning	Marcy Strauss	<a href="mailto:mss29@comcast.net">mss29@comcast.net</a>	(612) 710-6291
Corres. Sec'y, Social Justice	Dorry Sunenshine	<a href="mailto:dsunenshine@gmail.com">dsunenshine@gmail.com</a>	(480) 275-2226
Corresponding Secretary	Gail Tenn	<a href="mailto:gdtenn@hotmail.com">gdtenn@hotmail.com</a>	(480) 513-8462
Recording Secretary	Stephanie Altman	<a href="mailto:steffyaltnan@gmail.com">steffyaltnan@gmail.com</a>	(314) 724-3174
Recording Secretary	Henriette Hasley	<a href="mailto:henriette.hasley@cox.net">henriette.hasley@cox.net</a>	(602) 494-1924
Treasurer	Marcia Langer	<a href="mailto:marciala@msn.com">marciala@msn.com</a>	(914) 943-7804
Treasurer	Harriet Schwartz	<a href="mailto:harriet0715@gmail.com">harriet0715@gmail.com</a>	(602) 862-0528
B & A Chair/ Immed Past Pres./ Nominating Committee Chair	Carol Abrams	<a href="mailto:abrams.carol@gmail.com">abrams.carol@gmail.com</a>	(480) 948-1717
Book Fund Chair	Phyllis Becker	<a href="mailto:psb830@gmail.com">psb830@gmail.com</a>	(480) 838-1210
Boutique Chair	Brina Pepper	<a href="mailto:peppersells@cox.net">peppersells@cox.net</a>	(480) 483-7875
Bulletin Editor	Kathleen Witkin	<a href="mailto:witkinbnc@gmail.com">witkinbnc@gmail.com</a>	(480) 473-4825
Chief Info Officer, Summer Camp	Stephanie Klopfer	<a href="mailto:rednoz@aol.com">rednoz@aol.com</a>	(480) 838-8447
Donations Chair	Ronda Kottle	<a href="mailto:ronda@kottlehome.com">ronda@kottlehome.com</a>	(480) 483-7246
Electronic Communications	Paula Eckstein	<a href="mailto:paula.eckstein@gmail.com">paula.eckstein@gmail.com</a>	(480) 544-7570
Financial Secretary	Irene Lubin	<a href="mailto:iwlubin@gmail.com">iwlubin@gmail.com</a>	(480) 948-3773
Historian	Arlene Feldman	<a href="mailto:agfeldman1@cox.net">agfeldman1@cox.net</a>	(480) 227-6303
Liaison to Sun Lakes	Carol Fink	<a href="mailto:desertwoman@aol.com">desertwoman@aol.com</a>	(480) 802-3210
Membership Data Manager, Registrar Summer Camp	Bruce Galin	<a href="mailto:bruce.phxbnc@gmail.com">bruce.phxbnc@gmail.com</a>	(480) 661-0842
Membership Outreach	Judy Levine	<a href="mailto:judithlevine43@yahoo.com">judithlevine43@yahoo.com</a>	(480) 496-0252
Parliamentarian	Terry Taubman	<a href="mailto:terrytaubman@gmail.com">terrytaubman@gmail.com</a>	(602) 944-4111
Publicity	Barbara Stern	<a href="mailto:sternbts@gmail.com">sternbts@gmail.com</a>	(540) 664-3106
Scholarship Chair	Carol Kern	<a href="mailto:cak8219@gmail.com">cak8219@gmail.com</a>	(480) 948-9236
Social Justice	Ellen Kirschenbaum	<a href="mailto:ellenk102@cox.net">ellenk102@cox.net</a>	(602) 214-5212
Member At Large	Truda Chick	<a href="mailto:tchick2@cox.net">tchick2@cox.net</a>	(480) 686-8747
Member At Large	Wendy Cohen	<a href="mailto:wencohen@cox.net">wencohen@cox.net</a>	(602) 494-9168
Member At Large	Michelle Fischler	<a href="mailto:michellyules@gmail.com">michellyules@gmail.com</a>	(602) 667-0313
Member At Large	Annette Kurland	<a href="mailto:annettekurland@me.com">annettekurland@me.com</a>	(480) 636-1728
Member At Large, Summer Camp	Sheila Landau	<a href="mailto:buildor2@cox.net">buildor2@cox.net</a>	(480) 998-8999
Member At Large	Sue Lawler	<a href="mailto:suelawler9@gmail.com">suelawler9@gmail.com</a>	(480) 502-9036
Member At Large, Summer Camp	Beth Messer	<a href="mailto:bethmae721@gmail.com">bethmae721@gmail.com</a>	(480) 284-5555
Member At Large	Jo Ellen Susman	<a href="mailto:joellensus@gmail.com">joellensus@gmail.com</a>	(480) 502-6881
Member At Large	Abby Tucker	<a href="mailto:skyranch52@gmail.com">skyranch52@gmail.com</a>	(480) 575-3162