

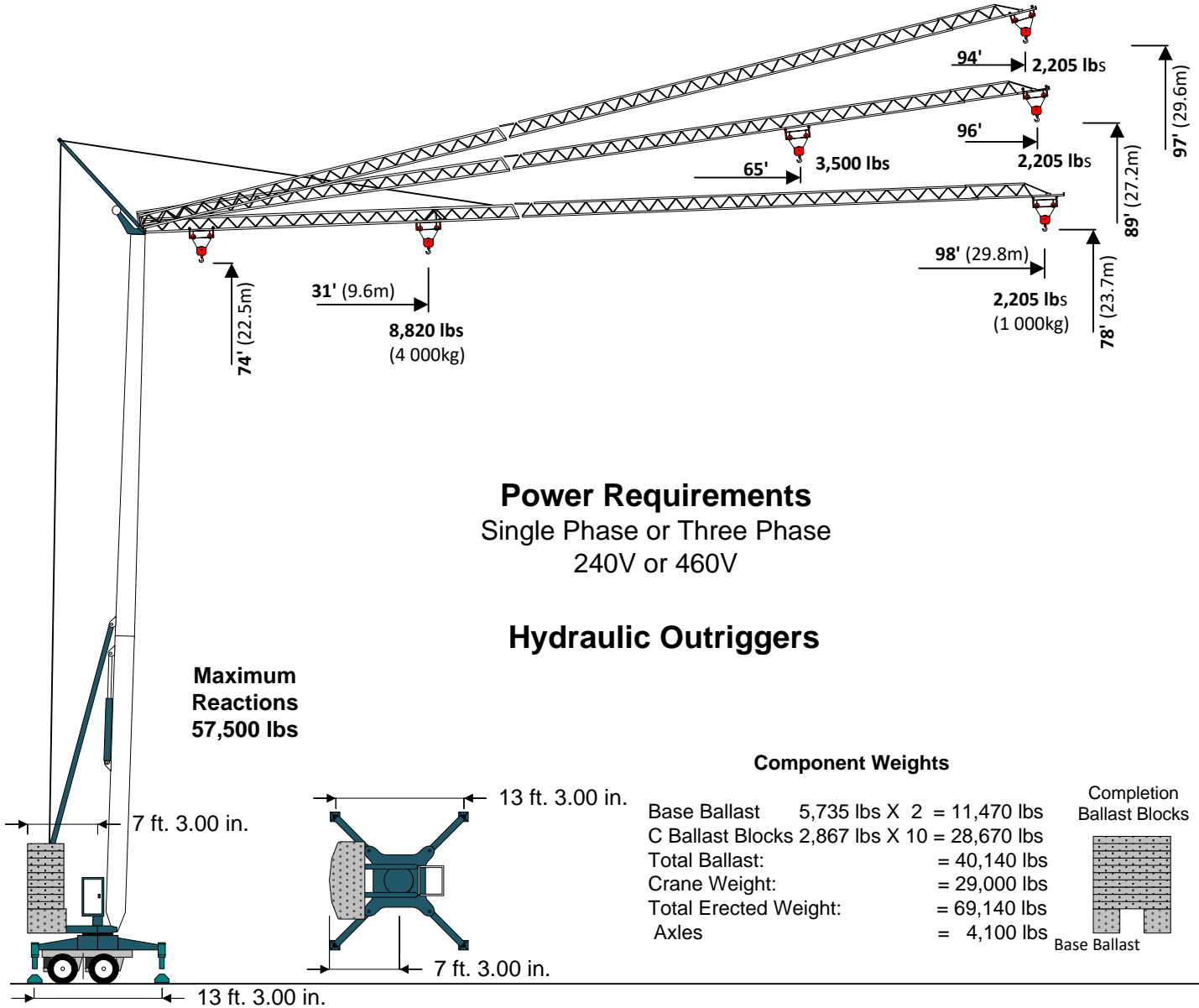


# VICARIO

## Self-Erecting Crane

### V 2298/78

(2,205 lbs, 98'/78')



### Power Requirements

Single Phase or Three Phase  
240V or 460V

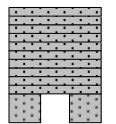
### Hydraulic Outriggers

Maximum  
Reactions  
57,500 lbs

### Component Weights

Base Ballast 5,735 lbs X 2 = 11,470 lbs  
 C Ballast Blocks 2,867 lbs X 10 = 28,670 lbs  
 Total Ballast: = 40,140 lbs  
 Crane Weight: = 29,000 lbs  
 Total Erected Weight: = 69,140 lbs  
 Axles = 4,100 lbs

Completion  
Ballast Blocks



Base Ballast

Hook	Ft.	31	33	39	46	52	59	66	72	79	85	92	98
Radius	Meters	9.4	10	12	14	16	18	20	22	24	26	28	29.8
2 Part	Lbs	8,820	8,196	6,565	5,450	4,650	4,040	3,565	3,180	2,865	2,600	2,375	2,205
Block	KG	4.000	3.717	2.977	2.472	2.109	1.832	1.617	1.442	1.299	1.179	1.077	1.000