

Rabbit Anti-EBV-I3 Polyclonal: RC0417, RC0417RTU7

Intended Use: For Research Use Only

Description: Epstein-Barr virus-induced gene 3 protein (EBI3), also known as Interleukin-27 subunit beta (IL27B), is a member of the type I cytokine receptor family (Type 3 subfamily) that is composed of two subunits: interleukin-27 (IL-27) and IL-35. EBI3 regulates T-helper cell development, stimulates cytotoxic T-cell activity, suppresses T-cell proliferation, and induces isotype switching in B-cells. EBI3 also plays an important role in its antitumor activity as well as its antiangiogenic activity.

Specifications:

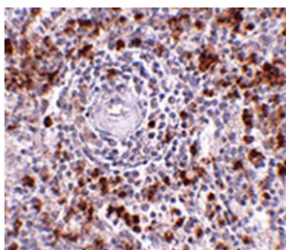
Clone: Polyclonal
 Source: Rabbit
 Isotype: IgG
 Reactivity: Human
 Localization: Secreted
 Formulation: Antibody in PBS pH7.4, containing BSA and $\leq 0.09\%$ sodium azide (NaN₃)
 Storage: Store at 2°- 8°C
 Applications: IHC, IF, WB
 Package:

Description	Catalog No.	Size
EBV-I3 Concentrated	RC0417	1 ml
EBV-I3 Prediluted	RC0417RTU7	7 ml

IHC Procedure*:

Positive Control Tissue: Spleen
 Concentrated Dilution: 20-40
 Pretreatment: Citrate pH6.0 or EDTA pH8.0, 15 minutes using Pressure Cooker, or 30-60 minutes using water bath at 95°-99°C
 Incubation Time and Temp: 30-60 minutes @ RT
 Detection: Refer to the detection system manual

* Result should be confirmed by an established diagnostic procedure.



FFPE human spleen stained with anti-EBI3 using DAB

References:

1. Gastric Epithelial Expression of IL-12 Cytokine Family in Helicobacter pylori Infection in Human: Is it Head or Tail of the Coin? Al-Sammak F, et al. PLoS One 8:e75192, 2013.
2. Contribution of IL-12/IL-35 common subunit p35 to maintaining the testicular immune privilege. Terayama H, et al. PLoS One 9:e96120, 2014.