



2699 Jane St

REGENT STREET
Retail & Restaurant Real Estate Solutions

ANDREA BULLER
Vice President, Retail Leasing
ANDREA.BULLER@REGENTSREET.CA
416-666-3563

JANE SHEPPARD MALL

INTERSECTION:

Jane Street & Sheppard Avenue West

RESTAURANT SPACE AVAILABLE:

2783 SF- 6,280 SF

Additional space can be made available

ASKING RENT:

Market Rate

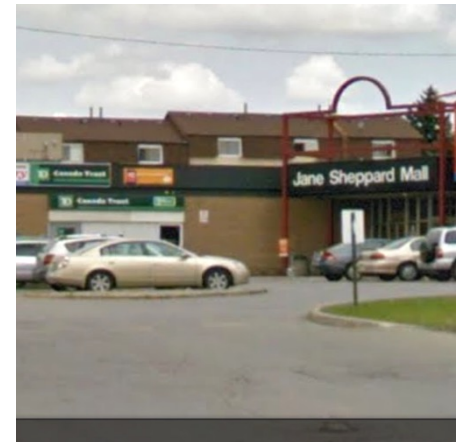
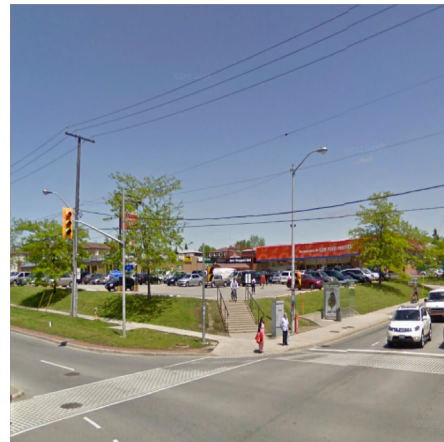
T.M.I. \$17.50 p.s.f.

FEATURES:

- Pylon signage available for major tenants
- Excellent presence at busy intersection at Jane and Sheppard
- Retailers will benefit from significant vehicular exposure, as well as foot traffic from the neighboring gas station
- Available immediately

EXISTING TENANTS:

- TD BANK
- DENTIST
- MEDICAL CENTRE
- VARIETY STORE
- FURNITURE STORE



JANE SHEPPARD MALL

TRAFFIC COUNTS

Jane @ Sheppard



25,743

8 Hour
Pedestrian Volume



51,486

24 Hour
Pedestrian Volume



16,803

8 Hour
Vehicular Volume



33,606

24 Hour
Vehicular Volume

