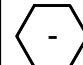


A ID	B OD	C THK.	D HEIGHT	E JOINT HT.	F BASE	G SPACING
1829	2184	178	610	127	203	305
1829	2184	178	720	127	203	305
1829	2184	178	914	127	203	305
1829	2184	178	1219	127	203	305
1829	2184	178	1630	127	203	305

AVAILABLE HEIGHTS	QTY. OF RUNGS	STARCON LIFTING PINS	WEIGHTS [kg]
0.61m [2']	1	8T	3448
0.72m [2.36']	1	8T	3732
0.91m [3']	2	8T	4233
1.22m [4']	3	8T	5019
1.63m [5.35']	4	8T	6078

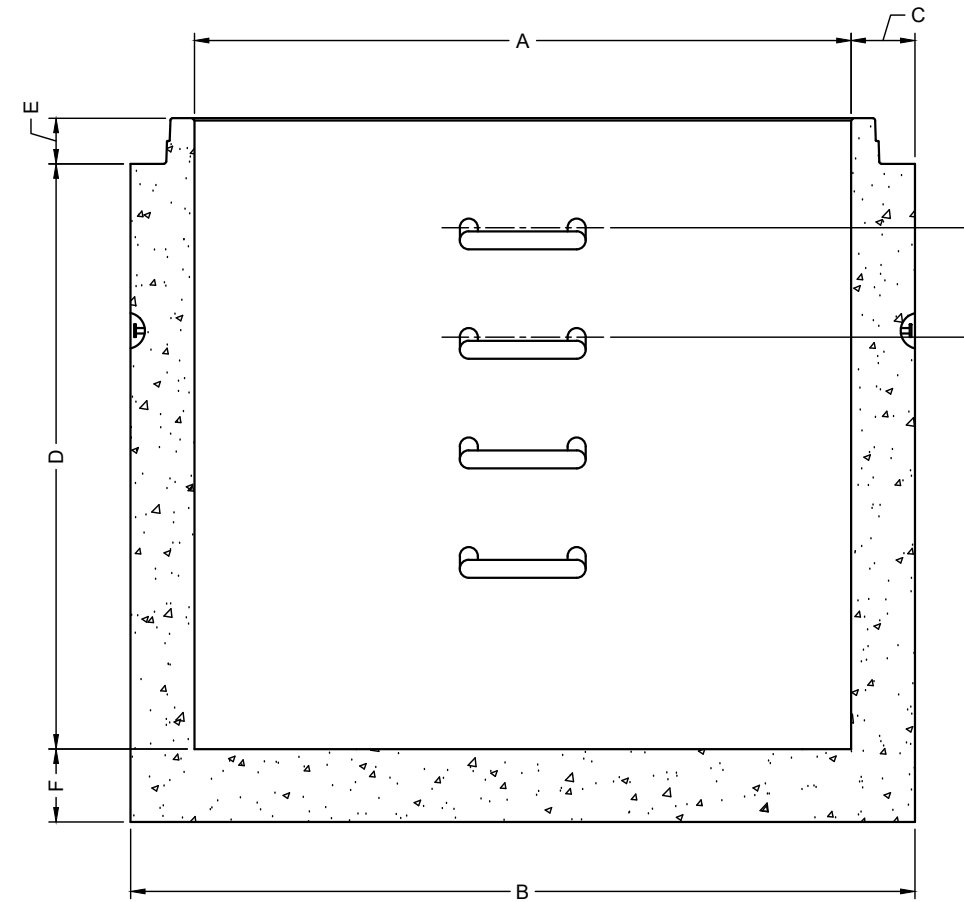
RELEASE	MPa	20
28 DAY:	MPa	35
AIR CONTENT:	6% ± 1%	
WEIGHT:	kg	VOLUME m³
TYPE:	kg/m³	2402

STRAND		mm	-
		MPa	-

MARK	DESCRIPTION	QTY.



ISOMETRIC VIEW
NTS



ELEVATION
VIEW



NOTES:

- 1) CEMENT : PORTLAND CEMENT TYPE 50(HS)
- 2) Max AGGREGATE SIZE: 20mm
- 3) 28 DAY STRENGTH: MIN. 35 MPa.
- 4) ENTRAINED AIR: 6%±1%
- 5) REINFORCING TO CAN/CSA-G30.18 400 MPa
- 6) ALL UNITS ARE IN MILLIMETERS UNLESS OTHERWISE NOTED.

DWG. NO.	REFERENCE	NO.:	REVISION DESCRIPTION	BY	APP'D	DATE	DRW BY	SWM	2018/11/21
-	-	A	ISSUED PLAN	-	-	2018/11/21	CH'K BY	-	-
-	-	-	-	-	-	-	AP'D BY	-	-
-	-	-	-	-	-	-	AP'D BY	-	-
-	-	-	-	-	-	-	AP'D BY	-	-
-	-	-	-	-	-	-	SCALE: NTS	PAGE: 1 OF 1	

TITLE:	1800 MONOBASE DETAIL DRAWING	
PROJECT NO.:	JOB NO.:	
DRAWING NO.:	SVI-MB-1800-01A	