

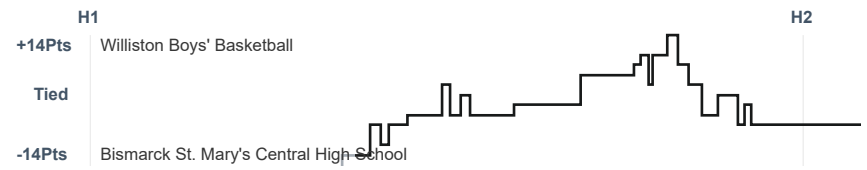
Box Score Report

WHS vs SMCHS - Jan 31, 2020 - W 57-54

Period Stats

Team	1	2	Final
WHS	36	21	57
SMCHS	31	23	54

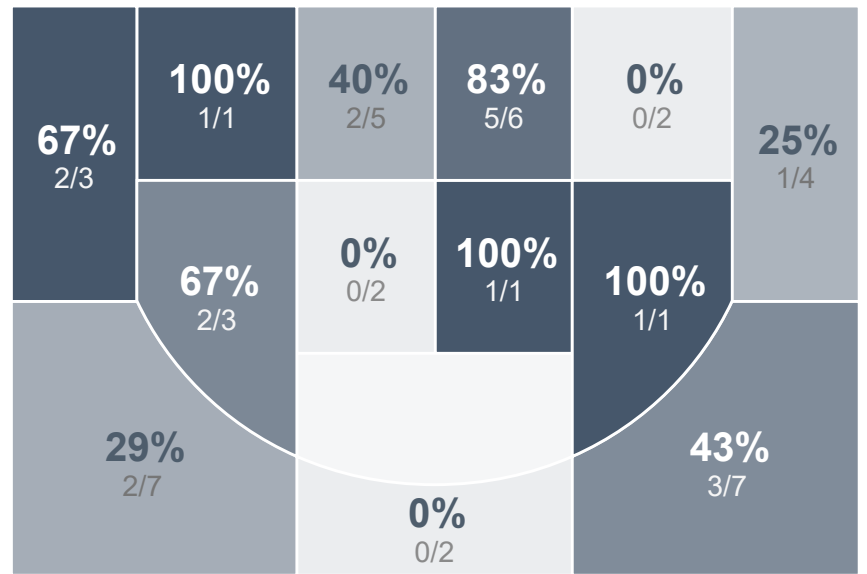
Run Graph



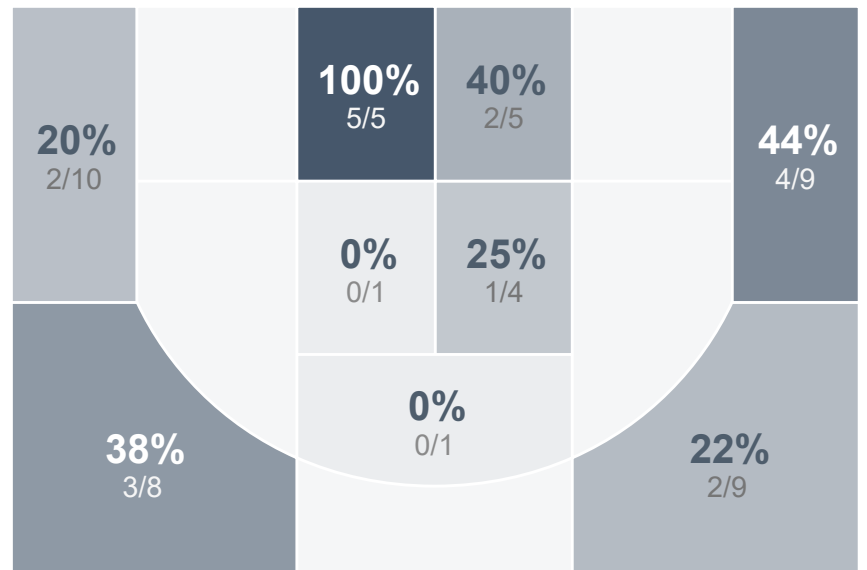
Team Stats

	WHS	SMCHS
Field Goal %	44.4%	36.5%
Effective Field Goal %	53.3%	47.1%
2FG Made/Attempted	12/21	8/16
2FG%	57.1%	50.0%
3FG Made/Attempted	8/24	11/36
3FG%	33.3%	30.6%
FT Made/Attempted	9/12	5/7
Free Throw Percentage	75.0%	71.4%
Points Per Possession	1.02	0.91
Transition Points	3	11
Points Off Turnovers	18	4
Second Chance Points	3	9
Points in the Paint	16	16
Offensive Rebounds	6	11
Defense Rebounds	20	20
Assists	11	11
Deflections	18	11
Steals	8	6
Blocks	1	1
Turnovers	11	15
Personal Fouls	10	15
Charges Taken	0	1

Williston Boys' Basketball



Bismarck St. Mary's Central High School



Williston Boys' Basketball's Player Stats

Name	Pts	FG	3FG	FT	+/-	MINS	OREB	DREB	AST	DEFL	STL	BLK	TO	FOUL	CHG
#1 Wil Olson	13	5/15	3/9	0/0	+ 3	37	0	4	4	4	2	0	0	0	0
#4 Garret Hill	4	0/1	0/0	4/4	+ 3	32	1	3	2	2	2	0	2	1	0
#12 Leif Larsen	5	1/1	1/1	2/2	- 6	32	3	2	3	4	2	0	2	3	0
#14 JJ Williams	0	0/1	0/1	0/0	+ 8	10	1	0	0	0	0	0	3	3	0
#20 Jorn Everson	26	11/21	1/7	3/6	0	35	0	4	0	4	0	1	2	1	0
#22 Jaxon Meyer	9	3/5	3/5	0/0	+ 7	31	0	4	2	4	1	0	2	1	0
#24 Benson Slotsve	0	0/1	0/1	0/0	0	9	0	1	0	0	1	0	0	1	0

Bismarck St. Mary's Central High School's Player Stats

Name	Pts	FG	3FG	FT	+/-	MINS	OREB	DREB	AST	DEFL	STL	BLK	TO	FOUL	CHG
#2 Carson Rohrich	12	4/10	4/10	0/0	+ 5	16	1	0	0	1	0	0	0	0	0
#3 Isaac Armstrong	2	1/6	0/4	0/0	- 10	9	1	0	0	0	0	0	1	0	0
#5 Connor Puetz	5	2/6	1/5	0/0	- 3	19	0	2	1	3	1	0	1	4	0
#11 Jackson Uhler	2	1/5	0/3	0/0	+ 3	22	0	4	2	2	1	1	1	3	1
#20 Thomas Jackson	0	0/1	0/1	0/0	0	1	0	0	0	0	0	0	0	0	0
#21 Jaxon Wiseman	18	6/12	4/9	2/4	- 3	36	2	5	2	0	2	0	5	0	0
#22 Jackson Roerick	0	0/0	0/0	0/0	- 1	0	0	0	0	0	0	0	0	0	0
#23 Evan Gross	6	2/6	1/2	1/1	+ 7	28	2	3	3	1	2	0	3	2	0
#32 Nick Schumacher	0	0/1	0/1	0/0	- 10	8	0	0	1	1	0	0	3	0	0
#33 Brit Senftner	7	3/4	1/1	0/0	- 4	21	0	2	2	2	0	0	0	0	0
#35 Ben Morman	0	0/0	0/0	0/0	+ 2	7	0	2	0	0	0	0	0	2	0
#42 Zach Haas	2	0/1	0/0	2/2	0	20	2	2	0	1	0	0	0	4	0