

Prepared for
5/14/2026

Properties for Lease

1 EIDorado Commerce Center - 1019 N Colorado St, Gilbert, AZ 85233



Rental Rate Mo \$1.35 SF/Mo/NNN
 Spaces 1
 Property Sub-type Warehouse
 Status Active

Property Notes:

Evap Cooling in Warehouse; CAMs running \$.25 psf
 200 AMP, 3 Phase, 277/480 Volt Power

Spaces

#	Space Avail.	Rental Rate	Min Divisible	Max Contig.	Lease Type	Date Avail.	Service Type
100	18,061 SF	\$1.35 SF/Mo/NNN	18,061 SF	18,061 SF	NNN	6/1/2026	Turnkey Equipped with Cold/Freezer Storage

2 EIDorado Commerce Center - 973 N Colorado St, Gilbert, AZ 85233



Rental Rate Mo \$1.35 SF/Mo/NNN
 Spaces 1
 Property Sub-type Warehouse
 Status Active

Property Notes:

Air Conditioned Office Area/Parcial Warehouse AC; CAMs running \$.25 psf; Bldg Power 1000 AMPS 3 Phase 277/480 Volts.

Spaces

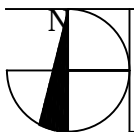
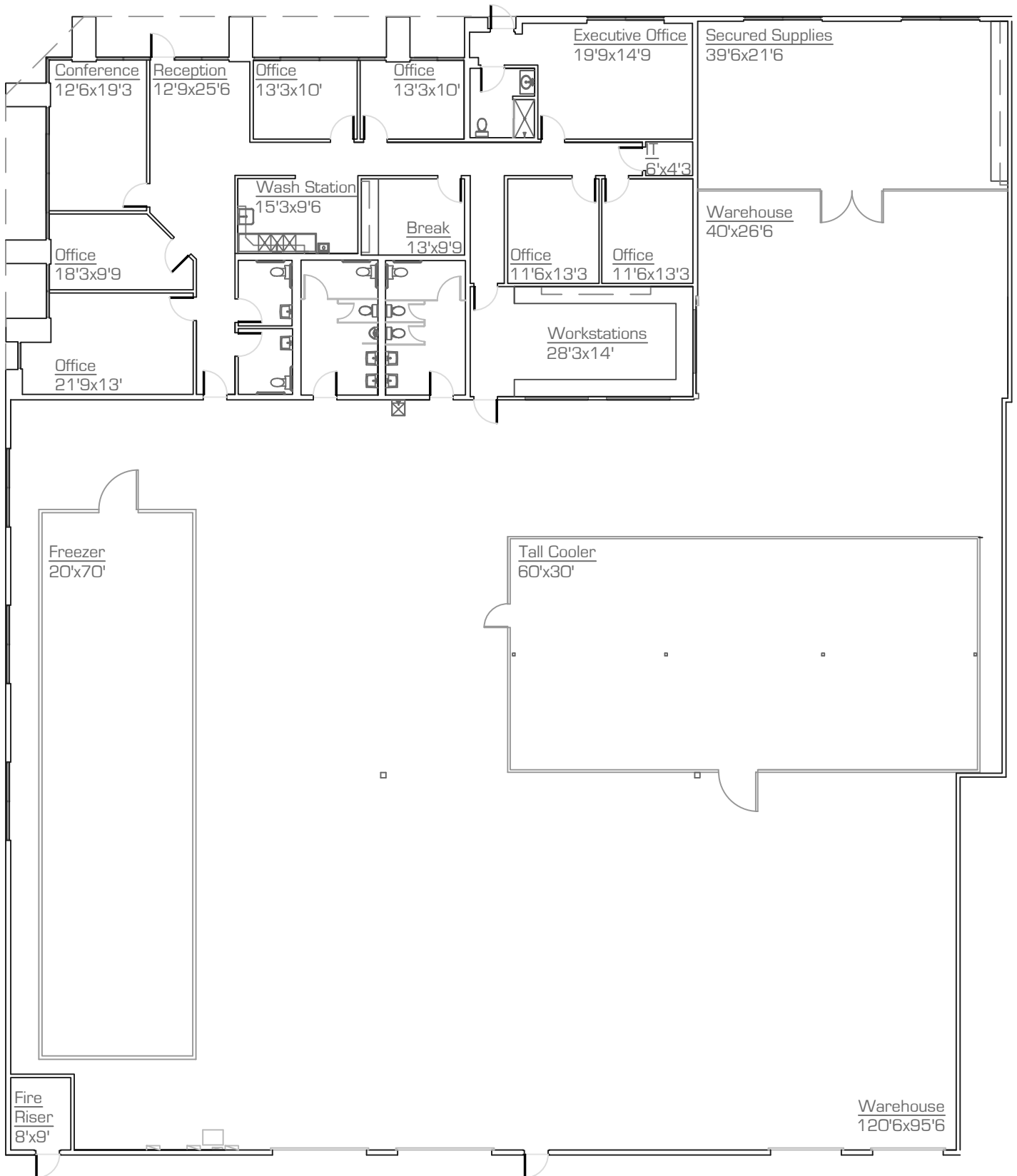
#	Space Avail.	Rental Rate	Min Divisible	Max Contig.	Lease Type	Date Avail.	Service Type
Bldg 2	52,780 SF	\$1.35 SF/Mo/NNN	52,780 SF	52,780 SF	NNN	Now	Triple Net

Property Description

El Dorado Commerce Center - two building project with approximately 112,786 square feet of multi-tenant industrial manufacturing, distribution, warehousing and office. Located at 973 and 1019 North Colorado Street in Gilbert Arizona. This high-tech business park offers 22' ceilings, truck wells at grade level and is conveniently located one mile south of the Superstition Freeway (60). An interior site within the El Dorado Tech master planned business park.

Building 1 (1019 N. Colorado St) Building 2 (973 N. Colorado St) is located at the NEC of Arizona Ave & Guadalupe Rd in Gilbert, AZ 85233, Maricopa County Arizona.

1019 North Colorado Street
Gilbert . AZ
Suite 100 - 18,061 SF



As-Built
scale: nts
3.March.2026

Contact: REB Ltd (480) 827-9591

precisionDIMENSIONS



*All dimensions are approximate at ± 3"
*All information is of general nature

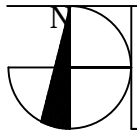
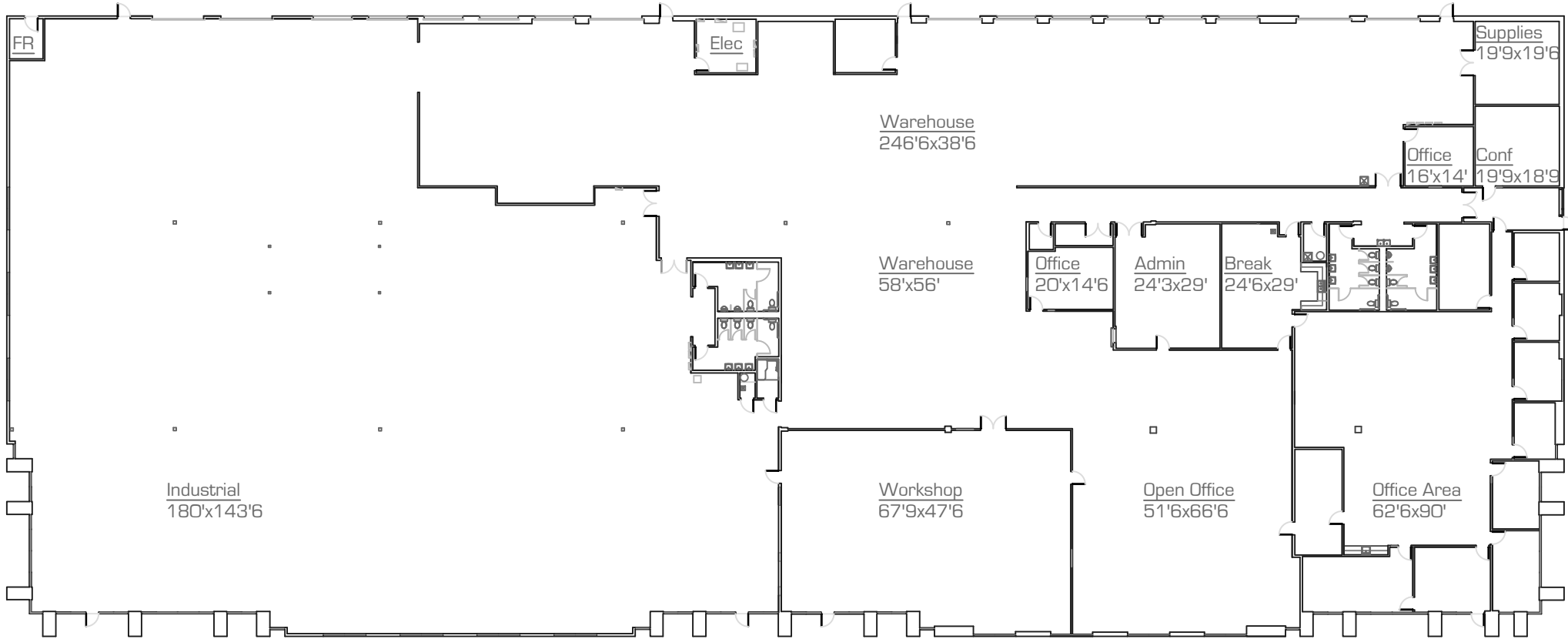








973 North Colorado Street
Gilbert . Arizona
Building - 52,780 SF



As-Built - floor plan

scale: nts

10.March.2026

*All dimensions are approximate at $\pm 3"$

*All information is of general nature

precisionDIMENSIONS

as-built & survey
602.790.6412













EXIT























