

***Inside Mount***

*Installation*

## PRE-INSTALLATION CHECKLIST:

- Tool & Material Requirements Supplied By The User:
  - Measuring Tape & Pencil
  - Power Saw with Metal Cutting Blade for Non-Ferrous Metals
  - Power Drill
  - ½" Drill Bit and ¼" Long Shank Drill Bit
  - T25 Torx Bit
  - Long Nose Pliers
  - Phillips and Slotted Screwdriver
  - Utility Knife/Scissors
  - Electrical Wire Stripper
  - Soft Mallet
  - Level
  - Ladder and Saw Horses
  - Phillips Head Bit
  - Speed Square
  - Appropriate fasteners to attach the screen to the structure. Fasteners must provide 1.5" or more embedment into the substrate.
- Electrical:
  - Access to power & an extension cord
- Surface Preparation:
  - The mounting surface must be even and appropriate for the anchoring system and, to support the weight of the screen
- People:
  - Two (2) or more people are required to install the screen





Determine location and orientation of unit to install



Confirm and inspect all products



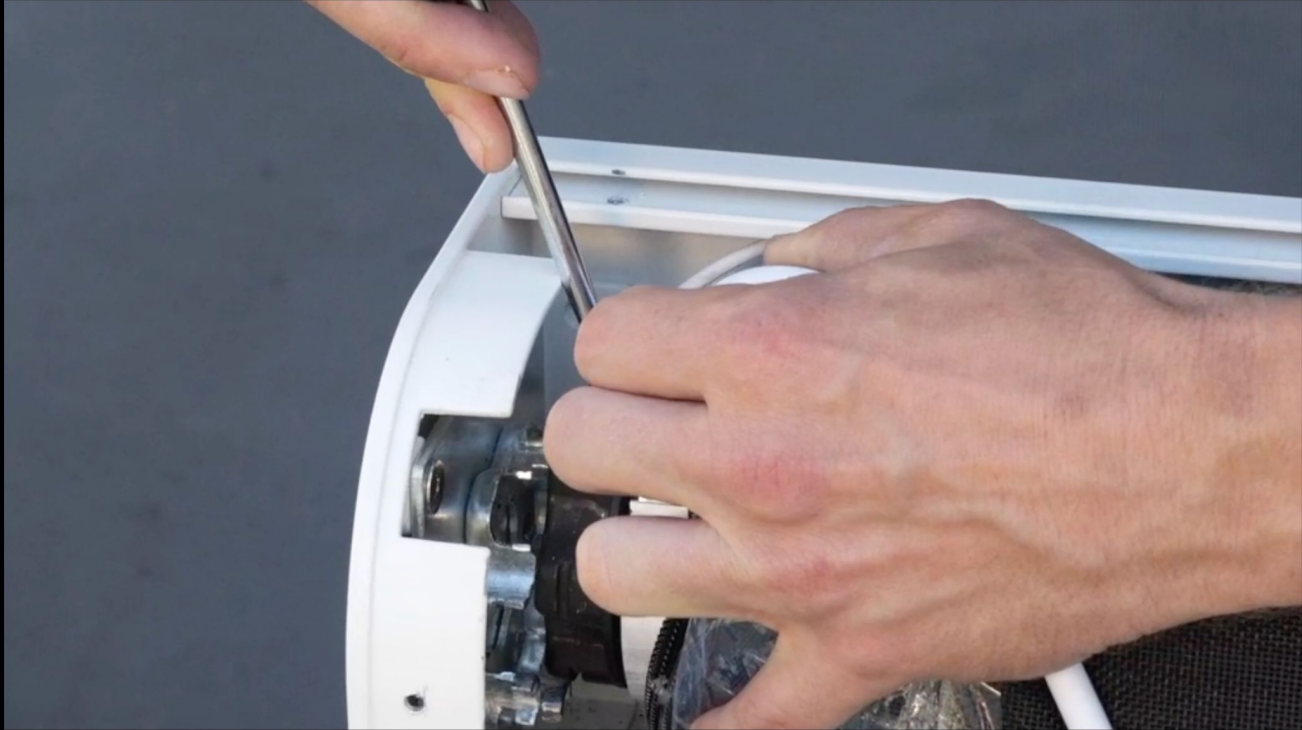
Confirm opening measurements



Remove housing cover using a T-25 Torx Bit



Remove the motor clip with pliers



Remove roll screen tube using flat head screwdriver or small pry bar





Re-attach motor clip to motorside housing



Prepare housing for install by drilling holes at end caps and center line



Measure left/right side for angle



Mark and cut angle



Install angle



Mark center of housing and header



Center and install housing





Determine and drill 1/2" cord access hole through housing





Place motor cord through motor housing channel



Route wire through cord hole drilled in step 12



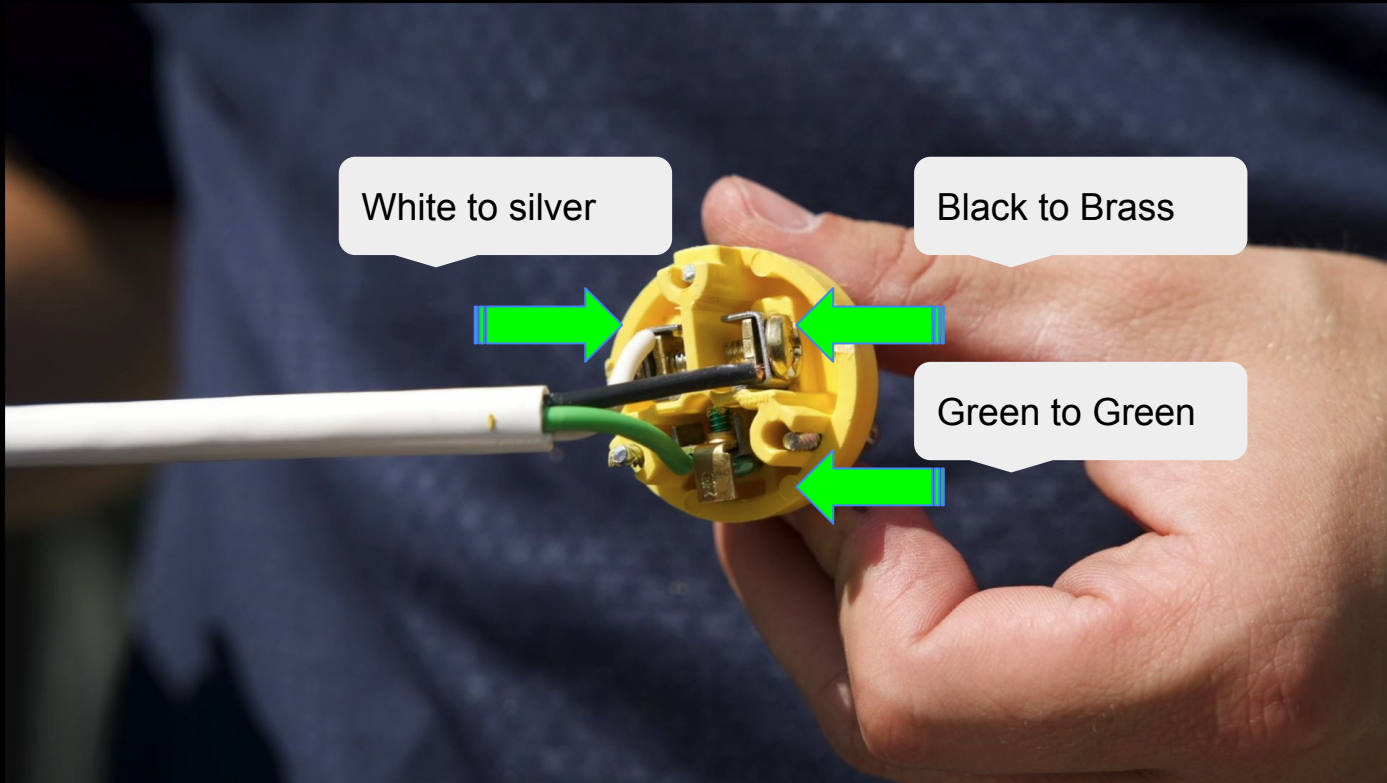
Install and compress roll tube idler end first





Snap motor head into locking plate





Install grommet on cord and connect electrical connections to proper screws



Plug unit in and Wake up motor by **pressing and holding the up & down buttons till the motor jogs**

*Select channel number first if using Multi-channel remote*



Check for correct screen rotation - Press and hold "MY" button till unit jogs to change rotation



Set temporary upper screen limit 8" from top by **pressing down and "MY" button - Screen lowers**

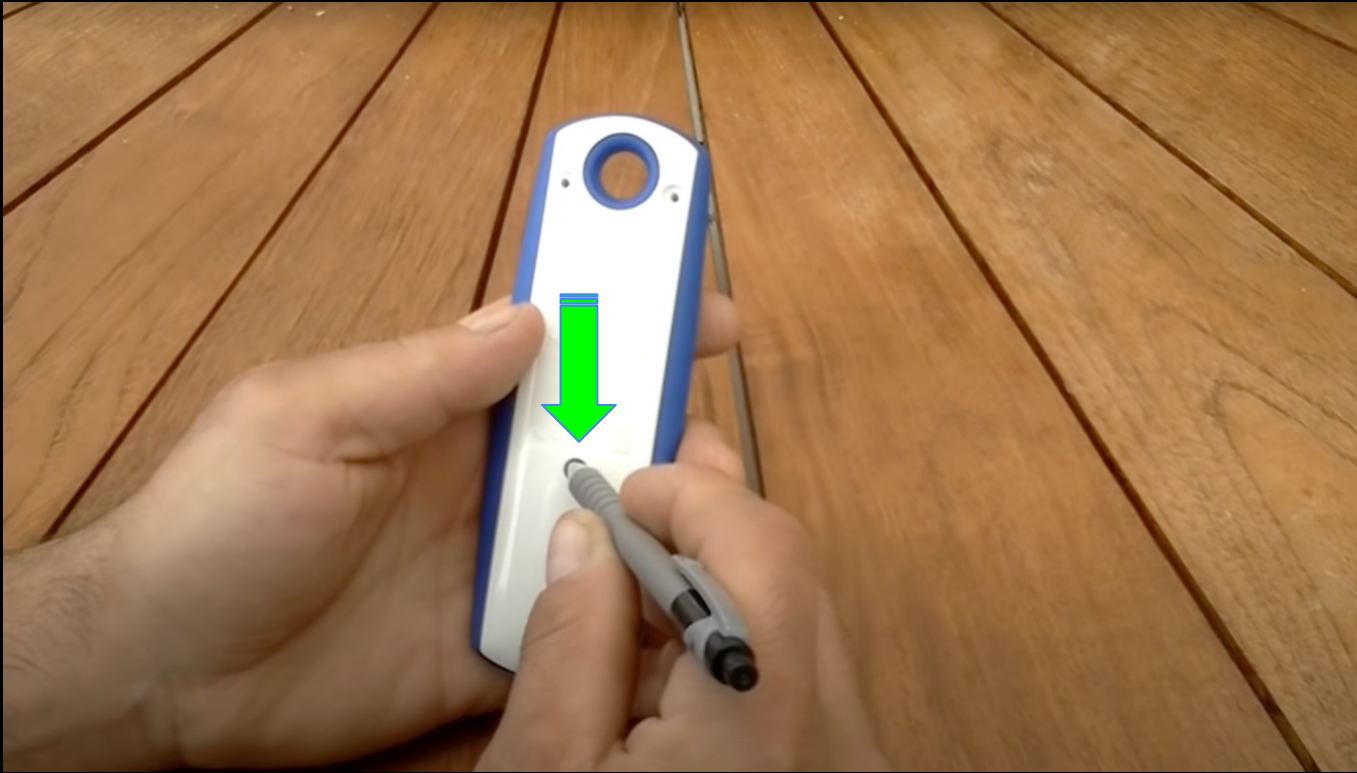




Set temporary lower screen limit 8" from ground by **pressing UP and "My" - Screen raises**



Stop screen around waist height. **Press and hold "MY" till screen jogs**



Briefly **press the "Programming" button** on back side of remote - screen jogs

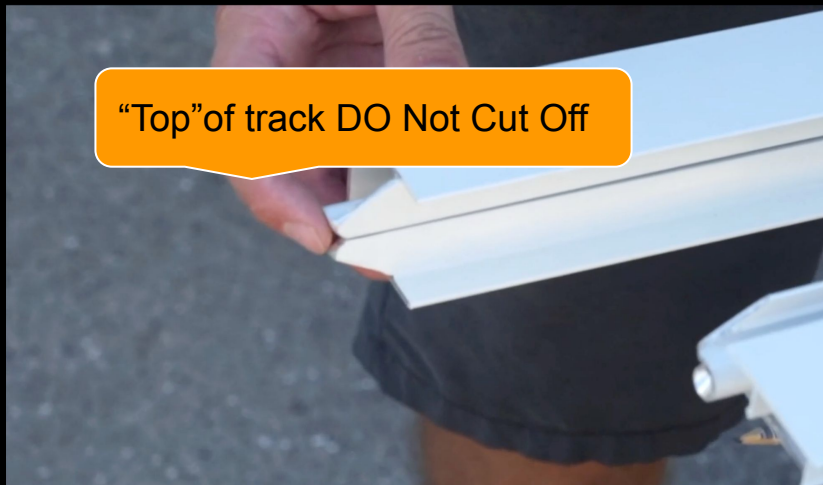


Slide screen zipper into bottom bar chase





Measuring tacks before cutting tracks



“Top” of track DO Not Cut Off



Measure and cut left and right tracks



Ensure zipper enters funnel

Place tracks and ensure zipper enters funnel



While holding L&R tracks in place, lower screen to bottom limit







Level and install tracks with appropriate fasteners (not included)



Test Screen function by running screen up and down. Adjust tracks as needed



Reinstall housing cover





Raise screen to temp upper limit. Press Up and Down together till screen jogs. Adjust to desired upper limit, hold "MY" till unit jogs



Lower screen to temp lower limit. Press Up and Down together till screen jogs. Adjust to desired lower limit, hold "MY" till unit jogs



Final product

***Inside Mount***

*Installation*