

**SUMMERSET CITY COMMISSION
REGULAR MEETING
ZOOM MEETING
SUMMERSET MUNICIPAL BUILDING
7055 LEISURE LANE
THURSDAY August 5, 2021, 6:00 P.M.**

Mayor Torno called the Regular Meeting to order at 6:00 p.m. Commissioners Hirsch, Kitzmiller, Butler, McCoy were present. The City Attorney, City Administrator, and Finance Officer were also present.

Mayor Torno led the Pledge of Allegiance.

Motion by Hirsch, second by Butler, to approve the agenda for the Regular Meeting of the SummerSet City Commission for August 5, 2021. Motion carried.

Motion by Butler, second by McCoy, to open discussion on the minutes of July 15, 2021. Motion carried.

Motion by Butler, second by Kitzmiller, to approve the minutes of July 15, 2021, as amended to state “Motion by Kitzmiller, second by Butler, to approve August 19th, 2021 to open public bid.” Motion carried.

APPROVAL OF CLAIMS

Motion by Kitzmiller, second by McCoy, to approve the claims and hand checks in the amount of \$77,642.89 from July 15, 2021 through August 4th, 2021 as presented or amended. Motion carried.

A&B BUSINESS SOLUTIONS	Monthly Contract	79.44
ALLEN, DON	Phone Stipend	50.00
AMBROSE, JONATHAN	Phone Stipend	50.00
BUNTAIN, JOSHUA	Phone Stipend	50.00
BUTLER, DAVE	Phone Stipend	50.00
CANDACE SEALEY	Phone Stipend	50.00
DAKOTA PUMP, INC	Water Warrior Pump Diagnosis	3,028.07
DUCHENEAUX, HALAYNA	Phone Stipend	50.00
DUSTBUSTERS	Dustguard	3,034.80
ENTERPRISES INC.		
FORD MOTOR CREDIT COMPANY, LLC	2020 Ford Interceptor	1,479.21
GEORGE MANDAS	Professional Fees P & Z	1,800.00
GOLDEN WEST TECHNOLOGIES	Cloud Mitigation, Traning, Keys	1,464.00
GREENAPSIS	Janitorial	475.00
HARVEY'S LOCK & SECURITY	Rekey Grade 2 Lever	223.18
HAWKINS INC.	Aqua Hawk	2,412.00
HEALTH POOL OF SD	Employee Medical Insurance	11,562.25
HERMANSON EGGE ENGINEERING	4 Residential Inspections	420.00
HIRSCH, CLYDE	Phone Stipend	50.00
KITZMILLER, MICHAEL	Phone Stipend	50.00
KAYL, ANTHONY	Phone Stipend	50.00
LEGENDARY ELECTRIC	Pull Wires	990.22
MBFS USA LLC	MBFS	3,068.32

MDU	Utilities	197.28
MEADE COUNTY AUDITOR	LE Dispatch June	2,054.75
MID-AMERICAN RESEARCH CHEMICAL	WWTP Supplies	1,307.56
MONTILEAUX, CASEY	Phone Stipend	50.00
NASSER,RICH	Phone Stipend	50.00
PALMER, BRANDY	Phone Stipend	50.00
RAPID CITY JOURNAL	Publications	287.88
RHS INC.	Barricades	950.00
SCHIEFFER, LISA	Phone Stipend	50.00
SD ONE CALL	June Notifications	44.10
SDRS-SUPPLEMENTAL	Supplemental Retirement	435.00
SERVALL UNIFORM & LINEN SUPPLY	Monthly Fees	143.87
STEPHANIE MCCOY	Phone Stipend	50.00
TANNER FENENGA	Phone Stipend	50.00
TORNO, MELANIE	Phone Stipend	50.00
USGS	USGS Contract	10,000.00
VAST BROADBAND	Fax/Phone/Internet	1,049.65
VERIZON WIRELESS	LE Voice & Mobile Broadband	200.05
WELLS FARGO FINANCIAL SERVICES	Bobcat Payment	1,079.30
FIRST INTERSTATE BANK	Leisure Lane Payment	4,911.76
SDRS	Employee Retirement	7,480.10
UNITED STATES TREASURY	Payroll Taxes July	12,315.58
FIRST NATIONAL TRUST	P & I ACH	4,299.52

UTILITY BILLING ADJUSTMENTS

Motion by Butler, second by Hirsch, to approve the utility billing adjustments of \$4,129.79 for the period of July 1, 2021 through July 31, 2021. Motion carried.

APPROVAL OF ASSISTANT FINANCE OFFICER HOURLY WAGE

Motion by Kitzmiller, second by McCoy, to approve the wage of Brittany Mills @ \$16.25/hr. Motion carried.

DISCUSSION ON ROLL OFF TRUCK BID

Motion by Kitzmiller, second by Butler, to open discussion on the bid set for August 19, 2021. Motion carried.

Motion by Kitzmiller, second by Hirsch, to cancel the bid letting that was set for August 19, 2021.

Motion by Kitzmiller, second by Hirsch, to proceed with the purchase of the truck from Sourcewell for a cost savings of \$10,000.00. Motion carried.

PROPOSED PUBLIC WORKS MAINTENANCE POSITION

Motion by Kitzmiller, second by Butler, to open discussion on the proposed public works maintenance position. Motion carried.

Motion by McCoy, second by Hirsch, to approve a temporary hire until the end of the year. Motion carried.

PROPOSED WASTEWATER OPERATOR POSITION

Motion by Butler, second by Kitzmiller, to open discussion on the proposed wastewater operator position. Motion carried.

Motion by Kitzmiller, second by Butler, to approve a full-time hire until the end of the year. Motion carried.

CITY ADMINISTRATOR REPORT FOR JULY 2021

City Administrator Lisa Schieffer gave her monthly report on economic development, grants, planning & zoning and miscellaneous items. Schieffer presented to the Board a cyber security assessment that is funded by Division of Consumer Protection in the SD Attorney General’s Office. Schieffer also presented the SDPAA Loss Control Report.

DISCUSSION REGARDING POSSIBLE ORDINANCE TO DEAL WITH DUMPING AND ADDING A PENALTY.

Motion by Kitzmiller, second by Butler, to open discussion on said proposed ordinance. Motion carried.

Motion by McCoy, second by Hirsch, to set a first reading on the proposed ordinance for August 19th, 2021. Motion carried.

MARIJUANA ORDINANCES AND REGULATIONS

Motion by Hirsch, second by McCoy, to open discussion on said marijuana ordinances. Motion carried.

Motion by Kitzmiller, second by Butler, to set a first reading on the Ordinance 2021-03 for August 19th, 2021. Motion carried.

ANNOUNCEMENTS – Budget meetings are set for August 16th @ 6:00 p.m. and will continue to August 17th and 18th if needed.

CITIZENS INPUT

No input.

ITEMS FROM CITY ATTORNEY

Motion by Hirsch, second by McCoy, to enter Executive Session per SDCL 1-25-2 for discussing legal, economic development and personnel issues at 6:54 p.m. Motion carried.

Motion by McCoy, second by Hirsch to exit executive session at 7:23 p.m. Motion carried.

ADJOURNMENT

Motion for adjournment at 7:23 p.m. by Kitzmiller, second McCoy. Motion carried.

(SEAL)
ATTEST:

Candace Sealey
Finance Officer

Melanie Torno
Mayor

Published August 13th, 2021 at a cost of \$151.94.

**SUMMERSET CITY COMMISSION
SPECIAL MEETING
ZOOM MEETING
SUMMERSET MUNICIPAL BUILDING
7055 LEISURE LANE
MONDAY August 16, 2021, 4:30 P.M.**

Mayor Torno called the Special Meeting to order at 4:30 p.m. Commissioners Hirsch, Kitzmiller, and Butler were present. The City Administrator and Finance Officer were also present.

Mayor Torno led the Pledge of Allegiance.

Motion by Hirsch, second by Butler, to approve the agenda for the Special Meeting of the Somerset City Commission for August 16, 2021. Motion carried.

RESIGNATION OF COMMISSION BOARD MEMBER

Motion by Kitzmiller, second by Butler, to accept the resignation of Stephanie McCoy. Motion carried.

APPOINTMENT OF COMMISSION BOARD MEMBER

Motion by Kitzmiller, second by Hirsch, to appoint Kathlene Thurman to the vacant seat due to the resignation of Stephanie McCoy. Motion carried.

SWEARING IN OF COMMISSION BOARD MEMBER

Mayor Torno proceeded with the swearing in of Kathlene Thurman. Thurman read aloud the Oath of Office.

EXECUTIVE SESSION – EMPLOYEE EVALUATIONS/REVIEWS

Motion by Butler, second by Hirsch, to enter Executive Session per SDCL 1-25-2 for discussing legal, economic development and personnel issues at 4:33 p.m. Motion carried.

Motion by Butler, second by Hirsch, to exit executive session at 5:59 p.m. Motion carried.

ADJOURNMENT

Motion for adjournment at 5:59 p.m. by Butler, second Hirsch. Motion carried.

(SEAL)
ATTEST:

Candace Sealey
Finance Officer

Melanie Torno
Mayor

Published once _____, 2021 at a cost of \$ _____.

**SUMMERSET CITY COMMISSION
SPECIAL BUDGET MEETING
ZOOM MEETING
SUMMERSET MUNICIPAL BUILDING
7055 LEISURE LANE
MONDAY August 16, 2021, 6:00 P.M.**

Mayor Torno called the Special Budget Meeting to order at 6:04 p.m. Commissioners Hirsch, Kitzmiller, Thurman and Butler were present. The City Administrator and Finance Officer were also present.

Motion by Kitzmiller, second by Hirsch, to approve the agenda for the Special Budget Meeting of the Summerset City Commission for August 16, 2021. Motion carried.

NEW BUSINESS/DEPARMENT OVERVIEW

Discussion ensued regarding the preliminary FY2022 Budget. Department Heads along with Mayor/Commissioners went over the individual department's budget requests, along with projected revenues.

EXECUTIVE SESSION

Motion by Hirsch, second by Butler, to enter Executive Session per SDCL 1-25-2 for discussing legal, economic development and personnel issues at 7:11 p.m. Motion carried.

Motion by Butler, second by Thurman, to exit executive session at 7:39 p.m. Motion carried.

ADJOURNMENT

Motion for adjournment at 7:39 p.m. by Hirsch, second by Kitzmiller. Motion carried.

*The Budget review meetings that were set for continuation on August 17th and 18th will be cancelled.

(SEAL)
ATTEST:

Candace Sealey
Finance Officer

Melanie Torno
Mayor

Published once _____, 2021 at a cost of \$ _____.

Check Register Report

Date: 08/18/2021

Time: 9:38 am

Page: 1

City of Summerset

BANK: BANKWEST

Check Number	Check Date	Status	Void/Stop Date	Reconcile Date	Vendor Number	Vendor Name	Check Description	Amount
BANKWEST Checks								
24836	08/06/2021	Printed			1566	JUSO, COLTON	Phone Stipend	50.00
24837	08/18/2021	Printed			1098	A&B BUSINESS SOLUTIONS	Monthly Contract	45.00
24838	08/18/2021	Printed			0021	BLACK HAWK WATER USERS DISTRICT	Monthly Usage	32.00
24839	08/18/2021	Printed			0808	BLACK HILLS ENERGY	Utilities	6,770.21
24840	08/18/2021	Printed			1504	CBH CO-OP	Govt Fuel	2,980.66
24841	08/18/2021	Printed			0036	CITY OF RAPID CITY	Solid Waste Disposal	4,911.16
24842	08/18/2021	Printed			0765	DEMERSSEMAN JENSEN	Legal Services	3,120.00
24843	08/18/2021	Printed			0709	DIAMOND D WATER	Monthly Usage Steamboat Park	376.95
24844	08/18/2021	Printed			1011	ELECTRICAL ENGINEERING & EQUIP	Repair & Maint	251.00
24845	08/18/2021	Printed			1669	EXCEL TRUCK	Repairs To Garbage Truck	51.00
24846	08/18/2021	Printed			0246	GOLDEN WEST TECHNOLOGIES	TV/PC Troubleshooting	2,580.00
24847	08/18/2021	Printed			1133	HDR ENGINEERING, INC	Task Order 2020-03	2,127.50
24848	08/18/2021	Printed			1506	HERMANSON EGGE ENGINEERING	Building Inspections	577.50
24849	08/18/2021	Printed			0124	KIEFFER SANITATION	Portable Toilets	527.70
24850	08/18/2021	Printed			0937	MDU	Utilities	213.76
24851	08/18/2021	Printed			1101	MEADE COUNTY AUDITOR	Dispatch July 2021	2,327.29
24852	08/18/2021	Printed			1433	MIDCONTINENT COMMUNICATIONS	WWTP Telephone	200.36
24853	08/18/2021	Printed			1157	MIDCONTINENT TESTING LABS	Testing	415.00
24854	08/18/2021	Printed			1733	R & N RECYCLING	Pull Roll-offs	1,800.00
24855	08/18/2021	Printed			0008	RAPID CITY JOURNAL	Publications	985.91
24856	08/18/2021	Printed			0609	SD Assoc of Rural Water System	Annual Dues	640.00
24857	08/18/2021	Printed			0018	SD ONE CALL	July Notifications	29.40
24858	08/18/2021	Printed			1328	SERVALL UNIFORM & LINEN SUPPLY	Monthly Fees	143.87
24859	08/18/2021	Printed			1583	SONTECH	Equipment	15,995.19
24860	08/18/2021	Printed			0983	TANNER FENENGA	Reimbursement for refuse licen	20.00
24861	08/18/2021	Printed			1024	USA BLUEBOOK	WWTP	242.43

Total Checks: 26 Checks Total (excluding void checks): 47,413.89

Total Payments: 26 Bank Total (excluding void checks): 47,413.89

Check Register Report

Date: 08/18/2021

Time: 9:38 am

Page: 2

City of Summerset

BANK: BANKWEST EFT

Check Number	Check Date	Status	Void/Stop Date	Reconcile Date	Vendor Number	Vendor Name	Check Description	Amount
--------------	------------	--------	----------------	----------------	---------------	-------------	-------------------	--------

BANKWEST EFT Checks

42	08/18/2021	Printed			0167	SD DEPARTMENT OF REVENUE	Department Of Revenue	968.80
----	------------	---------	--	--	------	--------------------------	-----------------------	--------

Total Checks: 1	Checks Total (excluding void checks):	968.80
------------------------	--	---------------

Total Payments: 1	Bank Total (excluding void checks):	968.80
--------------------------	--	---------------

Total Payments: 27	Grand Total (excluding void checks):	48,382.69
---------------------------	---	------------------

AN ORDINANCE REGULATING MEDICAL CANNABIS
ESTABLISHMENTS

CITY OF SUMMERSET ORDINANCE 2021-03

Be it ordained by the City of Summerset adopts this ordinance as Title XI, Business
Regulations at Section 120:

Section 120.01: GENERAL PROVISIONS

(A) Authority

This Ordinance is enacted under the authority of SDCL 34-20G-58.

(B) Purpose

It is the purpose of this Ordinance to promote the general welfare of the citizens of City of Summerset in enacting the provisions of SDCL 34-20G and to carry into effect the powers granted to the Commissioners by virtue thereof and provide for the enforcement of the provisions set forth herein.

(C) Jurisdiction

These provisions shall, to the extent not in contradiction of any state law or regulation, govern the operations of medical cannabis establishments in the City of Summerset, South Dakota, outside the incorporated areas of any municipality.

Section 120.02: DEFINITIONS

(A) Application and Interpretation

The definitions listed hereafter shall apply to this Ordinance. The definitions are to be understood in their ordinary sense.

The definitions correspond to the definitions of SDCL 34-20G-1. Any interpretation of terms under that statute shall apply to the same term in this Ordinance.

(B) Definitions

1. **ALLOWABLE AMOUNT OF CANNABIS** means:
 - a. Three ounces of cannabis or less;
 - b. A quantity of cannabis products with an equivalent cannabis weight as established by rules promulgated by the department under § 34-20G-72;
 - c. If the cardholder has a registry identification card allowing cultivation, three cannabis plants minimum or as prescribed by physician; and
 - d. If the cardholder has a registry identification card allowing cultivation, the amount of cannabis and cannabis products that were produced from the cardholder's allowable plants, if the cannabis and cannabis products are possessed at the same property where the plants were cultivated;
2. **CANNABIS PRODUCTS**, any concentrated cannabis, cannabis extracts, and products that are infused with cannabis or an extract thereof, and are intended for use or consumption by humans. The term includes edible cannabis products, beverages, topical products, ointments, oils, and tinctures;
3. **CANNABIS PRODUCT MANUFACTURING FACILITY**, an entity registered with the

department pursuant to this chapter that acquires, possesses, manufactures, delivers, transfers, transports, supplies, or sells cannabis products to a medical cannabis dispensary;

4. **CANNABIS TESTING FACILITY OR TESTING FACILITY**, an independent entity registered with the department pursuant to this chapter to analyze the safety and potency of cannabis;
5. **CARDHOLDER**, a qualifying patient or a designated caregiver who has been issued and possesses a valid registry identification card;
6. **CHILD WELFARE AGENCY**, any agency or institution maintained by a municipality or county, or any agency or institution maintained by a person, firm, limited liability company, corporation, association, or organization to receive children for care and maintenance or for placement in a family home, or that provides care for mothers and their children, excepting family day care facilities as defined in SDCL 26-6-14.1;
7. **COMMISSIONERS**, the City of Summerset Board of Commissioners;
8. **CULTIVATION FACILITY**, an entity registered with the department pursuant to this chapter that acquires, possesses, cultivates, delivers, transfers, transports, supplies, or sells cannabis and related supplies to a medical cannabis establishment;
9. **DEPARTMENT**, the Department of Health
10. **DISQUALIFYING FELONY OFFENSE**, a violent crime that was classified as a felony in the jurisdiction where the person was convicted;
11. **EDIBLE CANNABIS PRODUCTS**, any product that:
 - a. Contains or is infused with cannabis or an extract thereof;
 - b. Is intended for human consumption by oral ingestion; and
 - c. Is presented in the form of foodstuffs, beverages, extracts, oils, tinctures, or other similar products;
12. **MEDICAL CANNABIS OR CANNABIS**, marijuana as defined in § 22-42-1;
13. **MEDICAL CANNABIS DISPENSARY OR DISPENSARY**, an entity registered with the department pursuant to this chapter that acquires, possesses, stores, delivers, transfers, transports, sells, supplies, or dispenses cannabis, cannabis products, paraphernalia, or related supplies and educational materials to cardholders;
14. **MEDICAL CANNABIS ESTABLISHMENT**, a cultivation facility, a cannabis testing facility, a cannabis product manufacturing facility, or a dispensary;
15. **MEDICAL CANNABIS ESTABLISHMENT AGENT**, an owner, officer, board member, employee, or volunteer at a medical cannabis establishment;
16. **PLACE OF WORSHIP**, a structure where persons regularly assemble for worship, ceremonies, rituals, and education relating to a particular form of religious belief and which a reasonable person would conclude is a place of worship by reason of design, signs, or architectural or other features;
17. **PLANNING AND ZONING BOARD**: the City Planning Commission created by Summerset Ordinance Section 31.050

Section 120.03: APPLICATION AND LICENSE APPROVAL

(A) Application

1. It shall be unlawful for any person, business, or other organization to engage in the business of operating a medical cannabis establishment within the municipal boundaries of the City without having a local license issued by the City.
2. It shall be necessary for any person, business, or other organization to obtain a local license

under this Ordinance prior to submitting an application to the South Dakota Department of Health for a state registration certificate. SDCL 34-20G-55

3. The application shall be on forms provided by the City. All information requested on the form shall be provided before the completed application is submitted.
 4. The application shall require verification, under punishment of perjury, that:
 - a. None of the principal officers or board members has served as a principal officer or board member for a medical cannabis establishment that has had its registration certificate revoked, whether in this state or elsewhere;
 - b. That none of the principal officers or board members are under twenty-one years of age;
 - c. That at least one principal officer is a resident of the City;
 - d. That the applicant is the owner or actual lessee of the premises where the business is conducted and the sole owner of the business operated under the license.
 5. If the applicant is other than an individual, the verification shall be by a principal officer of the entity applying for the license.
 6. The application fee as set forth herein shall be paid at the time the application is submitted.
 7. The license fee as set forth herein shall be paid at the time the application is submitted.
- Should the application be denied, the license fee shall be returned to the applicant.

(B) License Approval Process

1. Upon receipt of a completed application, application fee and license fee, the City Administrator shall present the application to the Planning and Zoning Board at the next regularly scheduled meeting of the Board which shall set the time and place for hearing on all applications. The hearing shall be conducted within 30 days of presentation of the application.
2. The City shall publish notice once in the official newspapers of the county, at least one week before the scheduled hearing. The notice shall be headed "Notice of Hearing Upon Applications for Medical Cannabis Establishment," shall state the time and place when and where such applications will be considered by the Planning and Zoning Board, and shall state that any person interested in the approval or rejection of any such application may appear and be heard.
3. At the time and place so set, the Planning and Zoning Board shall consider each application and any objection to the application before making its final decision on the application. The Planning and Zoning Board may recommend approval or disapproval of the application depending on whether the application complies with the Zoning Ordinance of the City and the Board deems the applicant a suitable person to hold the license and whether the proposed location is suitable.
4. A person or entity may obtain more than a single class of license and/or more than a single license within any class of license, unless otherwise prohibited by law. The fact that multiple licenses are held may be considered in the application process as a factor in determining whether the applicant is a suitable person to hold the license.
5. If the Planning and Zoning Board does not recommend approval of the application, the Board shall endorse on the application the reasons for the denial and return the application and the recommendation shall be forwarded to the City Board of Commissioners who shall schedule the matter to be heard at a special or regular meeting of the Commission.
6. If the Planning and Zoning Board recommends approval of the application, the recommendation shall be forwarded to the Commissioners who shall hear the matter a

special or regular meeting, and if approved by the Commission then the City shall endorse the approval on the application and shall issue a City license to the medical cannabis establishment.

7. Any license issued shall be effective and valid through December 31 of the year issued. However, any license approved in 2021 shall be effective and valid through December 31, 2022.

(C) Renewal

1. A license issued pursuant to this Ordinance may be renewed on an annual basis. An applicant for renewal is not automatically entitled to renewal. The issuance of a local license does not create a property right in that license.

2. An Application for Renewal shall be on the same forms and with the same requirements as the initial application set forth in Sections 1 and 2, above.

3. The applicant need not pay an application fee, but must pay the renewal fee as set forth herein. Such renewal fee shall be paid at the time the renewal application is filed with the City.

4. A completed Application for Renewal shall be presented to the City Administrator no later than November 1.

5. No Application for Renewal of a dispensary shall be approved if the licensed premise was not open to the public during regular business hours for the sale of medical marijuana for at least one hundred twenty (120) days in the previous year.

6. The Approval Process for a Renewal shall be the same as for an initial application. However, the license of a medical cannabis establishment applying for renewal may be approved for renewal by the Commissioners without a hearing unless in the past year the licensee, one of its principal officers or board members, or an employee of the dispensary have been subjected to a criminal penalty for violation of the Medical Cannabis laws or this Ordinance, or the license has been suspended.

(D) Suspension or Revocation

1. A local license issued hereunder may be suspended or revoked by the Commissioners for violation of this ordinance.

2. Notification of the intent of the Commissioners to consider suspension or revocation of a local license shall be made at the address given on the license. Such notification shall be at least thirty days in advance of the date set for public hearing on the suspension or revocation action.

3. Notice of public hearing shall be published in the official newspapers of the City at least one week prior to such hearing and in such form as deemed appropriate by the Commissioners.

4. At the public hearing, the Commissioners shall hear evidence or testimony from the licensee and any interested person. The Commissioners may revoke the license if they determine, following the public hearing, that a violation of this ordinance occurred.

5. If the Commissioners are satisfied that the nature and the circumstances of the violation were such that a suspension of the license would be adequate, the Commissioners may, instead of revoking the license, suspend it for a period not exceeding sixty days.

6. If the Commissioners suspend or revoke a local license, they shall notify the Secretary of the Department of Health of that fact.

(E) Transfer of License

The procedure for a transfer of a license is the same as the application for a new license. The fee for a transfer is _____. An affidavit of bulk sale and the existing license card must be submitted with the application for transfer. The application to transfer the license shall only be permitted if all municipal and state sales and use taxes incurred by the licensee as a result of the operation have been paid, and all property taxes, which are the liability of the licensee are paid or are not delinquent.

Section 120.04: OPERATING REQUIREMENTS AND RESTRICTIONS

(A) Authority

The South Dakota legislature has expressly granted authority to the City, through its Commissioners to govern the time, place and manner of operation of medical cannabis establishments. SDCL 34- 20G-58. The Commissioners may not prohibit a dispensary, either expressly or through the enactment or application of an ordinance that makes the operation of a dispensary impractical. In the development and execution of these regulations, it is recognized that there are some uses which because of their very nature, are recognized as having serious objectionable operational characteristics, particularly when several of them are concentrated under certain circumstances thereby having a potential deleterious effect upon the adjacent areas. Special regulation of these uses is necessary to ensure that these adverse effects will not contribute to the blighting or downgrading of the surrounding neighborhood. The primary control or regulation is for the purpose of preventing a concentration of these uses in any one area.

(B) General Prohibition

1. No medical cannabis establishment may operate in the City without possessing both a current license from City and a current registration certificate issued by the South Dakota Department of Health.

(C) Time Restrictions

1. No medical cannabis establishment may operate on any Federal or State holiday. However, a cultivation facility or cannabis product manufacturing facility may operate as may be required to prevent the destruction or degradation of marijuana plants under their control.
2. A medical cannabis dispensary may not operate between the hours of eight (8) p.m. and eight (8) a.m.

(D) Location Restrictions

1. Medical cannabis establishments are only allowed in those areas of the City that have been zoned as a C-1 General Commercial District and medical cannabis establishments shall be considered a permitted use as listed in section 115.116 of the Summerset City Ordinances.
2. No medical cannabis establishment may share office space with a medical, psychiatric, counseling, chiropractic, or physical therapy practice.
3. No medical cannabis establishment may be established, operated, or maintained

within one thousand (1,000) feet of a public or private school.

4. No medical cannabis dispensary may be established, operated, or maintained within four hundred (400) feet of a child welfare agency, a place of worship, an in-patient alcohol or drug treatment facility or a public playground.

5. No medical cannabis dispensary may be established, operated, or maintained within four hundred (400) feet of another medical cannabis dispensary, a bar or a liquor store.

6. No medical cannabis facility shall be located on-premises for which a license to sell alcoholic liquor has been issued.

(E) Manner Restrictions

1. No person under twenty-one (21) years of age shall be allowed on the licensed premises of a medical cannabis establishment.

2. At all times during the hours of operation of a medical cannabis establishment, there shall be present a manager or other employee of the licensee who shall be not less than twenty- one (21) years of age.

3. No cannabis or related paraphernalia shall be displayed or kept in a business so as to be visible from outside the cannabis establishment.

4. No licensee of a medical cannabis dispensary may dispense any medical marijuana to any person who is obviously under the influence of cannabis to such a degree as to cause impairment.

5. Before cannabis may be dispensed by a medical cannabis dispensary, a medical cannabis establishment agent:

1. Shall make a diligent effort to verify that the registry identification is valid; and

2. Shall make a diligent effort to verify that the person presenting the documentation is the person identified on the document presented to the dispensary agent.

6. All retail sales of cannabis shall be in person, directly to the purchaser, and within the retail area of a cannabis dispensary. No drive-up windows or similar delivery process shall be allowed.

7. A medical cannabis establishment agent shall not dispense an amount of cannabis to a person that would cause the person to possess more than the allowable amount of cannabis.

8. A medical cannabis establishment may not employ any person who has been convicted of a disqualifying felony offense.

9. No alcohol or cannabis may be consumed on the premises of a medical cannabis dispensary.

(F) Signage and Advertising

1. All exterior signage associated with a medical cannabis establishment shall comply with Summerset Ordinances Title XV, Section 115.270-280

2. In addition, no exterior signage may use the word “marijuana,” “cannabis,” or any other word, phrase or symbol commonly understood to refer to cannabis. Such words, phrases or symbols may be used if specifically approved by the Commissioners.

3. No cannabis establishment may distribute or allow the distribution of any cannabis or cannabis product without charge within a cannabis establishment or elsewhere for purposes of promotion, advertising or any other purpose.

Section 120.05: NUMBER AND COSTS OF LICENSES

(A) Authority

The South Dakota legislature has expressly granted authority to the City to determine the number of medical cannabis establishment licenses to issue. SDCL 34-20G-58. The City may charge a reasonable fee for the local license. SDCL 34-20G-60.

(B) Number of Licenses

A. There shall be available as local licenses for medical cannabis establishments a total of _____ licenses.

B. The total local licenses established shall be allocated as follows, with a maximum number of local licenses limited within type of medical cannabis establishment as follows:

- 1. Cultivation Facility: _____ license(s)
- 2. Cannabis Testing Facility: _____ license(s)
- 3. Cannabis Product Manufacturing Facility: _____ license(s)
- 4. Dispensary: _____ license(s)

C. The City shall consider all qualified applications in the order they were received, subject to any resolution establishing a different procedure. No local licenses may be issued after the available new local licenses have been awarded by the City.

D. Should any additional local licenses become available through revocation or otherwise, such license shall be made available to the first qualified applicant, subject to any resolution establishing a different procedure.

E. In the event the number of available licenses is reduced by future amendment of this Ordinance, no then existing licensee shall be prevented from continuing operation during the license term, from applying for renewal of such license for subsequent consecutive years, or from transferring such license, solely on the basis of such reduction. However, this exception shall not prevent a license from being suspended or revoked, nor shall it prevent a denial of an application for renewal or transfer, based upon grounds other than a change in the number of available licenses.

(C) License Fees

A. There shall be a non-refundable application fee in the amount of \$_____.

B. There shall be a fee for newly issued licenses under this Ordinance for each type of medical cannabis establishment as follows:

- 1. Cultivation Facility: \$ _____
- 2. Cannabis Testing Facility: \$ _____
- 3. Cannabis Product Manufacturing Facility: \$ _____
- 4. Dispensary: \$ _____

C. There shall be a renewal fee for any license issued under this Ordinance in the amount of _____.

Section 120.06: ENFORCEMENT AND PENALTIES

(A) Inspection

The City and law enforcement may inspect a medical cannabis facility during business

hours to ensure compliance with this ordinance.

(B) License Consequence

Violation of the terms of this Ordinance may result in revocation or suspension of the local license as set forth in this Ordinance.

(C) Civil Penalty

- A. Violation of the terms of this Ordinance may be enforced through a civil action in magistrate court or circuit court, at the discretion of the Commissioners.
- B. Civil penalties may not exceed \$500 for each violation.
- C. Each day the licensee is in violation of the Ordinance may be considered a separate violation.

Section 120.07: SEVERABILITY AND SEPERABILITY

Should any Article, Section, subsection or part of this Ordinance be declared by a court of competent jurisdiction to be unconstitutional, invalid or otherwise affected by law, such determination shall not affect the validity or constitutionality of the Ordinance as a whole or any part thereof other than the part so determined.

Section 120.08: EFFECTIVE DATE

This Ordinance shall be effective twenty (20) days following completed publication. Upon becoming effective, all prior Ordinances pertaining to the regulation of medical cannabis establishments are revoked.

Passed and adopted this ____ day of _____, 2021.

Melanie Torno, Mayor

Attest:

Finance Officer

- 1st Reading: _____
- 2nd Reading: _____
- Adopted: _____
- Published: _____
- Effective: _____

1st Reading: _____
2nd Reading: _____
Date Adopted: _____
Date Published: _____
Effective Date: _____

ORDINANCE NO. 2021-04

ORDINANCE PROHIBITING UNAUTHORIZED USE OF CITY GARBAGE CONTAINERS, UNAUTHORIZED DUMPING.

WHEREAS, the City of Summerset provides solid waste and recycling services to its residents in connection with its jurisdiction and authority to provide for the health, safety and welfare of its residents; and

WHEREAS, in connection with providing solid waste hauling, yard waste and recycling services, the City of Summerset has placed collection bins and containers, including but not limited to “roll off” containers, for the purpose of allowing residents to dispose of garbage, yard waste and recyclables and allowed waste materials into the same for collection; and

WHEREAS, the service is to be provided solely to residents of Summerset and is not intended to service commercial operations such as building and/or construction contractors, or otherwise; and

WHEREAS, contractors and other commercial operations have abused the solid waste collection services by dumping unauthorized materials into the City collection bins and containers.

NOW, THEREFORE, BE IT ORDAINED BY THE CITY OF SUMMERSET, SD:

Section 1. Residential Use Only. It is the declared policy of the City that the public receptacles are present for the convenience of the public who use the City of Summerset’s sidewalk and park system so that they may deposit items of garbage therein rather than litter. The public receptacles are not for the purpose of dumping large quantities of garbage, construction debris or other waste generated by commercial operations. That it shall be a violation of these Ordinances for any entity or commercial operation, including but not limited to construction contractors, to utilize the City’s collection bins and containers for the purposes of disposing of waste material and garbage, including construction debris, large. This pertains to all collection bins, whether placed for the purpose of depositing solid waste, yard waste, or recyclables.

Section 2. Outside waste. It is unlawful for any person residing outside of the corporate limits of the City of Summerset to bring quantities of garbage, accumulated out of the town and deposit them in any receptacle to be collected by the City along the streets or elsewhere within the corporate limits of the City of Summerset.

Section 3. Construction Debris. It shall be illegal and a violation of this Ordinance for any person or entity to dispose of debris resulting from the construction, demolition, or repair of any buildings in any containers placed by the city, including the solid waste, yard waste and recyclable containers. These items include, but are not limited to, brick, stone, concrete, plumbing materials, plaster, asphalt, roofing, floor coverings, gutters and shingles. Demolition and construction waste, excavation byproducts, and other debris or like material shall not be deposited in City receptacles.

Section 4. Additional prohibited items. It is further a violation of this Ordinance for any individual to dispose of the following items in any of the City's collection bins and containers:

Section 5. Civil Penalty. That a violation of this Ordinance is punishable by a civil penalty in an amount of up to five hundred dollars (\$500.00). Each separate violation is subject to a civil penalty in this amount. The City may also enforce the ordinance by injunction.

Date adopted: _____, 2021

Melanie Torno, Mayor

ATTEST:

Summerset Finance Officer

AMENDED RESOLUTION 2021-03

A RESOLUTION SETTING CERTAIN FEES AND CHARGES FOR SERVICES PROVIDED BY THE CITY OF SUMMERSSET FOR 2021

BE IT RESOLVED that the following schedule of rates shall be effective as of _____, 2021 for the following services provided by the City of Summersset.

DESCRIPTION OF FEE:	AMOUNT OF FEE:	
Adult Orientated Business License Application Annual License Additional Fees	\$500 \$300 \$50\Employee Annual Fee	
Amusement Ride Licensing Fee	\$50 per day \$150 per week \$300 per month	
<u>Building Permits: Residential Valuation</u> \$0 – 1,600 \$1,601 - 2,000 \$2,001 - 25,000 \$25,001 - 50,000 \$50,001 - 100,000 \$100,001 - 500,000 \$500,001 - 1,000,000 \$1,000,001 and up	\$37 \$69.25 \$45 + \$9/\$1,000 over \$2,000 \$252 + \$6.50/\$1,000 over \$25,000 \$414.50 + \$4.50/\$1,000 over \$50,000 \$639.50 + \$3.50/\$1,000 over \$100,000 \$2039.50 + \$3/\$1,000 over \$500,000 \$3,539.50 + \$2.50/\$1000 over 1,000,000	
<u>Building Permits: Commercial Valuation</u> \$1 - \$1,600 \$1,600 - \$2,000 \$2,001 - \$25,000 \$25,001 - \$50,000 \$50,001 - \$100,000 \$100,001 - \$500,000 \$500,001 - \$1,000,000 \$1,000,001 and up	\$37 \$69.25 \$69.25 + \$14/\$1,000 over \$2,000 \$391.25 + \$10.10/\$1,000 over \$25,000 \$643.75 + \$7/\$1,000 over \$50,000 \$993.75 + \$5.60/\$1,000 over \$100,000 \$3,233.75 + \$4.75/\$1,000 over \$500,000 \$5,608.75 + \$3.15/\$1,000 over \$1,000,000	
<u>Building Permit Flat Fees</u> Accessory Structures over 120sf Basement Remodels Decks Driveways/Sidewalks/platforms Retaining Walls Replacement of Doors and Windows Reroofing with new unlike material Swimming Pools Fences Erosion Control Deposit Failure to obtain inspection Occupancy prior to final inspection Street Light Fee Commercial Plan Review Building Investigation Fee	Determined upon review Determined upon review Determined upon review \$100 \$200 \$100 \$100 \$100 \$25 POSSIBLE CHANGE TO 75.00 \$1000 \$500 per violation \$500 \$150 50% of Permit \$65/hr	
Business License New Renewal Late Fee	\$100 per year \$25 per year POSSIBLE CHANGE TO 50.00 \$50 if not paid by January 1 st	
Code Enforcement Fees: First Violation Second Violation Third Violation Nuisance Violations Code Enforcement Appeal Fee	\$100 in any rolling 12-month period \$200 in any rolling 12-month period \$300 in any rolling 12-month period Civil Penalty of \$200 per day may be imposed \$100	
Contractors Licensing Fee	\$100/Annual based on calendar year	
Copies	\$0.10 each	
Circuses, Carnivals or other such shows Licensing Fee	\$25 per day POSSIBLE ADDITION OF FIREWORKS??	
Convenience Fee – Credit and Debit card payments	No more than 2% of transaction	

Drainage Permit	Application Application W/Board Action Routine Maintenance Work Performed w/o application	\$50 \$100 \$25 \$500	
Fax		\$2	
Filing Fees		As per Meade County	
Grading Permit Fee Grading Permit Review Fee		As per Table 100-D As per Table 100-E	
Horse Drawn Carriage Licensing Fee		\$25 per day	
Liquor Licenses Special One Day On-Sale Malt Beverage and Wine License Application Transfer Fee 24 Hour Brown Bag Permit-City Parks Sidewalk Café/Beer Garden Permit		Fees Set by State Statute \$5 per day up to 15 days plus publication fee \$30 \$150 \$25 per day \$100	
Notary Fee		\$5	
Police Support	Accident Reports Fee False Alarm 1-5 Incidents 6-7 Incidents 8 or more incidents	\$5.00 \$50.00 \$75.00 \$100.00	
Parking/Storage Violation Fee if paid City within 72 hours Parking/Storage Violation Fee not paid City within 72 hours Parking/Storage Violation Fee if paid to City within 72 hours-Handicap Stall Parking/Storage Violation Fee not paid City within 72 hours--Handicap Stall		\$10 \$20 \$100 \$110	
Pawnbrokers Licensing Fee		\$50 per Year due on 1 st of January	
Peddler Licensing Fee		\$25 per day \$75 per week \$200 per month	
Planning and Zoning Fees	Rezoning Conditional Use Permit Conditional Use Appeals Variances Planned Development Tax Incremental District Minimum Plat Fees Layout Plat Fee Preliminary Plat Fee Minor Plat Fee Final Fee Minor Boundary Change	\$300 \$300 \$100 \$300 \$300 \$1,000 \$1,000 \$1,000 \$250.00 \$750 \$250	
Plat and Resolution Filing Fees		\$90	
Sewer: Sewer Tap Fee-Residential Sewer Tap Fee Commercial Residential: Sewer Service Charge Sewer Maintenance Reserve Fee Sewer Debt Reserve CWSRF Surcharge Deposit Commercial and Residential Apartment Dwelling 5 or More Units: Sewer Service Charge Sewer Maintenance Reserve Fee Sewer Debt Reserve CWSRF Surcharge Deposit		\$1,500 POSSIBLE 2,500 to 3,000 \$3,000 POSSIBLE 4,500 to 6,000 STAGEBARN???? \$36 per month \$4.50 per month \$2.20 per month \$7.90 per month \$50 owner/\$100 renter Base Fee \$ 20.15 .0525 per 1000 Surcharge \$15.85 \$4.50 Per Month \$2.20 Per Month \$7.90 per month \$100	

Private Wastewater Disposal System: Permit and Inspection Fee-Tap Fee	\$1,000	
Sewer Late Payment Penalty	\$5	
Sewer Delinquent Account Deposit	\$100 <i>UP DEPOSITS????</i>	
Industrial Waste Permit	\$ 500 Annual Administrative Fee	
Wastewater Treatment System Service Fee	Set by resolution to fund expansion and emergency need-none currently	
Sign Permit-New	IRC Ordinance Table 100-A	
Temporary Sign Permit	\$35	
Off Premise Sign Permit – Renewal	\$100	
Annual Banner Sign Renewal	\$100	
Sign Permit Extension Fee	½ the cost of initial permit fee	
Solid Waste Collection – Residential	\$ 16.98\month\resident plus sales tax	
Extra Garbage Totes	\$10 per tote per month plus sales tax	
Collection Charges excess garbage	Charge as billed by solid waste hauler plus sales tax	
Illegal Dumping Fee	\$1,000 per Occurrence	
Storm Sewer Maintenance Fees	Set by resolution-currently none	
Garbage Container Return Fee	\$250	
Wireless Telecommunication Siting Fees		
Administrative Review Fee	\$300	
Special Permit Fee	\$300	
Appeal Fee	\$100	
Amendment Application Fee	\$300	
Vendor-Temporary	\$100 Two Days \$500 Twelve Days	
Vendor on Commercial Property-Temporary	\$100 per Year	
Video Lottery License	\$50 per machine per year	
Wind Generation Facilities-Commercial Permit Fee	\$85	

Note: Sales tax may be required on some of the fees within this resolution.

BE IT FURTHER RESOLVED that these fees shall remain in place until changed by an act of the City Commission.

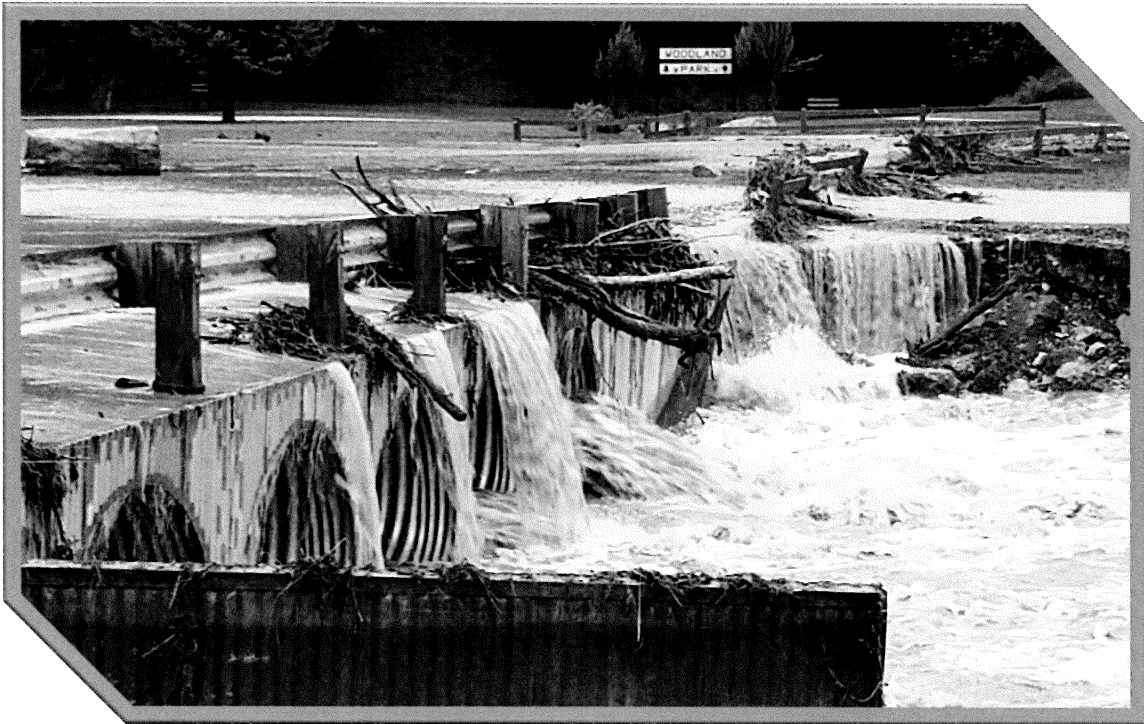
ATTEST:

Candace Sealey
Finance Officer

Melanie Torno
Mayor

MEADE COUNTY

South Dakota



* *Summerset pages ONLY*

Natural Hazard Mitigation Plan

Expiration: xx/xx/xxxx

Prepared by:
Black Hills Council of Local Governments
730 E. Watertown St.
Rapid City, SD 57701
(605)-394-2681

Participation of Local Jurisdictions						
Nature of Participation	Meade County	Box Elder	Faith	Piedmont	Sturgis	Summerset
Attended Meetings or work sessions (a minimum of 2 meetings will be considered satisfactory).	<input checked="" type="checkbox"/>	<input checked="" type="checkbox"/>	<input checked="" type="checkbox"/>	<input type="checkbox"/>	<input checked="" type="checkbox"/>	<input checked="" type="checkbox"/>
Submitted inventory and summary of reports and plans relevant to hazard mitigation.	<input checked="" type="checkbox"/>	<input checked="" type="checkbox"/>	<input checked="" type="checkbox"/>	<input checked="" type="checkbox"/>	<input checked="" type="checkbox"/>	<input checked="" type="checkbox"/>
Submitted Risk Assessment Worksheet.	<input checked="" type="checkbox"/>	<input checked="" type="checkbox"/>	<input checked="" type="checkbox"/>	<input type="checkbox"/>	<input checked="" type="checkbox"/>	<input checked="" type="checkbox"/>
Submitted description of what is at risk (including local critical facilities and infrastructure at risk from specific Hazards) Worksheet 3A	<input checked="" type="checkbox"/>	<input checked="" type="checkbox"/>	<input checked="" type="checkbox"/>	<input type="checkbox"/>	<input checked="" type="checkbox"/>	<input checked="" type="checkbox"/>
Submitted a description or map of local land-use patterns (current and proposed/expected).	<input checked="" type="checkbox"/>	<input checked="" type="checkbox"/>	<input type="checkbox"/>	<input checked="" type="checkbox"/>	<input checked="" type="checkbox"/>	<input checked="" type="checkbox"/>
Developed goals for the community.	<input checked="" type="checkbox"/>	<input checked="" type="checkbox"/>	<input checked="" type="checkbox"/>	<input checked="" type="checkbox"/>	<input checked="" type="checkbox"/>	<input checked="" type="checkbox"/>
Developed mitigation actions with an analysis/explanation of why those actions were selected.	<input checked="" type="checkbox"/>	<input checked="" type="checkbox"/>	<input checked="" type="checkbox"/>	<input type="checkbox"/>	<input checked="" type="checkbox"/>	<input checked="" type="checkbox"/>
Prioritized actions emphasizing relative cost-effectiveness.	<input type="checkbox"/>	<input type="checkbox"/>	<input type="checkbox"/>	<input type="checkbox"/>	<input checked="" type="checkbox"/>	<input checked="" type="checkbox"/>
Reviewed and commented on draft plan.	<input type="checkbox"/>	<input type="checkbox"/>	<input type="checkbox"/>	<input type="checkbox"/>	<input type="checkbox"/>	<input type="checkbox"/>
Hosted opportunities for public involvement (allowed time for public comment at a city council meeting during public comment period)	<input checked="" type="checkbox"/>	<input checked="" type="checkbox"/>	<input checked="" type="checkbox"/>	<input checked="" type="checkbox"/>	<input checked="" type="checkbox"/>	<input checked="" type="checkbox"/>

Table 2.2. Local jurisdictions participation requirements met. At least seven of the participation requirements must be met for the jurisdiction to have participated for adoption of plan.

City of Sturgis Council Members and Public Officials Involved in the Plan	
Mark Carstensen	Mayor
Daniel Ainslie	City Manager
Fay Bueno	Finance Officer
Jason Anderson	Council Member
Mike Bachand	Council Member
Rhea Crane	Council Member
Steve Keszler	Council Member
Terry Keszler	Council Member
David Martinson	Council Member
Ron Waterland	Council Member
Beka Zerbst	Council Member
Roger Burnham	Municipal Airport Manager
Greg Barnier	City Attorney
Scott Rovere	Building Inspector
Scott Lensegrav	Fire Chief
Marty Plaggermeyer	Street Superintendent
Rick Bush	Public Works Director
Dave Smith	Code Enforcer
Geody VanDeWater	Police Chief
Christina Steele	Planning Director
Liz Wunderlich	City Engineer
Dustin Williams	Staff Engineer
Christina Steele	Public Information Officer

Table 3.5 Meade County officials involved in the 2021 Meade County Hazard Mitigation Plan Update.

City of Summerset Council Members and Public Officials Involved in the Plan	
Melanie Torno	Mayor
Lisa Schieffer	City Administrator
Candace Scaley	Finance Officer
David Butler	Commissioner
Clyde Hirsch	Commissioner
Michael Kitzmiller	Commissioner
Stephanie McCoy	Commissioner
Michael Wheeler	City Attorney
Dan Anderson	Code Enforcer
Donald Allen	Police Chief
Tanner Fenenga	Public Work Director
Johnathan Ambrose	Sewer Superintendent

Table 3.6 City of Summerset officials involved in the 2021 Meade County Hazard Mitigation Plan Update.

SELECTION OF THE PLANNING TEAM [§201.6(c)(1)]

The plan shall document the planning process used to develop the plan, including how it was prepared, who was involved in the process, and how the public was involved.

BHCLG led the process of updating the Meade County Mitigation Plan. BHCLG is one of six planning and development districts in the State of South Dakota and has a staff with collectively over 35 years of experience in writing and updating natural hazard mitigation plans. BHCLG's first step was to review the existing plan and the gap reports prepared by the SDOEM to ensure that any gaps or insufficiencies could be addressed in the plan update. After the initial review of the plan, it was decided that a complete rewrite of the plan was necessary to ensure that the requirements outlined in FEMA's plan review guide were included in the plan. After reviewing the plan, BHCLG staff met with the County Commissioners at a regular

commission meeting to discuss the process that would be used to update the plan and to address the need for enhanced mitigation planning efforts in Meade County. The County Commission delegated the Meade County Emergency Manager, Meade County Planning and Equalization Department and Meade County HR staff as the points of contact to assist with the development of the plan update. After the initial meeting, a stakeholder's meeting was held to engage numerous partners that would assist in providing BHCLG with the necessary information needed to establish a meaningful mitigation strategy. The public was invited to attend along with numerous state and federal agencies, engineering firms, universities, water and sanitary districts, and municipalities. There were zero attendees from the public, but a great showing from the federal agencies, especially those entities with a stake in properly managed WUI areas, along with representation from a few of the local jurisdictions. Due to the lack of public participation at the stakeholder's meeting, it was suggested to hold meetings at each of the city council meetings for participating municipalities. Participating Municipalities were also instrumental in leading the discussions at their local city council meetings. Additional work sessions were scheduled with the municipalities that needed additional time to talk about unique and varied risks and a special meeting was held specifically for the fire groups including USFS, BLM, USDA, NRCS, Meade County Firewise, and SD Wildland Fire. Between meetings BHCLG collected and reviewed numerous technical documents, maps, and ordinances, weather history, completed projects, and previous mitigation efforts to ensure that mitigation planning was being properly integrated with all other planning mechanisms within the County.

The local representatives for each jurisdiction and the County are listed below in table 3.7. The planning team was tasked with collecting and sharing information with the full board/council; and providing comments back to Black Hills Council of Local Governments to be included in the plan. Additionally, the plan representatives were tasked with completing the worksheets #1, #2, #3a, #3b, and #4 and submitting them to BHCLG. BHCLG staff led the mitigation discussion at the local and discussed project ideas with each respective council. Those representatives are listed by jurisdiction:

Plan Representatives	
Meade County	Doug Huntrods, Emergency Manager
Meade County	Rhea Crane, Equalization and Planning Director
Meade County	Bill Rich, Equalization and Planning
Meade County	Marlo Kapsa, Equalization and Planning
Meade County	Max Rooke, Equalization and Planning
Meade County	Jerry Derr, HR
Meade County	Jordan Neeb, HR Assistant
Meade County	Lucas Neeb, Highway Technology Assistant
Box Elder	Nicole Schneider, City Administrator/Finance Officer
Box Elder	Lauralee Patton, Planning
Faith	Debbie Brown, Finance Officer
Piedmont	Diana Evans, Finance Officer
Sturgis	Dave Smith, Director of Planning and Permitting/EM
Summerset	Lisa Schieffer, City Administrator

Table 3.7 Participating Plan Representatives and title.

PUBLIC INVOLVEMENT [§201.6(b)(1)]

The public was provided several opportunities at City Council meetings to comment on the plan during the drafting stage of the plan update. State law requires that public meetings allow for public comment during the meetings as described in SDCL 1-25-1.

...The public body shall reserve at every regularly scheduled official meeting a period for public comment, limited at the public body's discretion, but not so limited as to provide for no public comment. At a minimum, public comment shall be allowed at regularly scheduled official meetings which are designated as regular meetings by statute, rule, or ordinance.

It was during this legally required public comment period that the public was allowed to provide comments. Mitigation Planning was listed on the required notices for the City Council and County Commission meetings.

Notices for public meetings require a minimum of time, date, and location, and were posted in accordance with SDCL 1-25.1.1:

1-25-1.1. ...Each political subdivision shall provide public notice, with proposed agenda, that is visible, readable, and accessible for at least an entire, continuous twenty-four hours immediately preceding any official meeting, by posting a copy of the notice, visible to the public, at the principal office of the political subdivision holding the meeting. The proposed agenda shall include the date, time, and location of the meeting. The notice shall also be posted on the political subdivision's website upon dissemination of the notice if a website exists. For any special or rescheduled meeting, the information in the notice shall be delivered in person, by mail, by email, or by telephone, to members of the local news media who have requested notice. For any special or rescheduled meeting, each political subdivision shall also comply with the public notice provisions of this section for a regular meeting to the extent that circumstances permit.

During the Council Meeting for the City of Summerset held on June 3rd, 2021, several members of the public had made comments on two issues facing the city, involving the Sun Valley Estates Subdivision. Residents commented on past flooding issues that occurred with groundwater that had flooded several homes that were originally build on a dry creek bed. Stating the issue was not drainage but groundwater flooding that occurs during heavy rain events such as those from 2019. A second issue that was of concern were several residents on the eastern side of I-90 were requesting secondary access and egress. The purposed road would connect the Sun Valley subdivisions to the Wonderland Homes subdivision. This road would allow and alternative access to I-90. At this time there many homes that only have one way in and one way out. The public stressed the need to have a secondary access in case of emergency such as flooding or fire event. During this meeting, the city was already looking into options for secondary access.

Although during the meetings there was only one event of public comment on the plan update, discussion took place among the council members, engineers, finance officers, city engineers and/or attorneys (when relevant), fire specialists and city staff and was documented in the meeting minutes of the local jurisdictions and published in the paper or record for each entity as required by law.

After the draft of the plan was complete, the plan was posted on the Meade County's Website for public review and comment. Notice was also posted on Meade County's Facebook page with a link to the plan on the County's website. The Cities of Box Elder, Sturgis, and Summerset also posted links to the plan on their Facebook pages. The administrators for the Facebook pages reported the post reached # people, # were engaged (opened the link to the Plan), # person commented on the post and # people liked the post. The comments received have been addressed. Administrators of the social media pages provided screen shots of the Facebook post and they have been included in Appendix C.

Notice was also emailed to all the participants and to the emergency managers in the neighboring counties of: Butte, Haakon, Lawrence, Pennington, Perkins, and Ziebach. A copy of the email is included in Appendix D. Everyone who received an email notice of the plan draft was allowed two weeks to respond to the plan author, and 32 days to provide comments on the draft. The table 3.8 below documents who the email was sent to.

Neighboring Emergency Managers			
Neighboring County	Emergency Manager	Email Address	Response Received
Butte	Fred Lamphere	Fred.lamphere@buttesd.org	
Haakon	Lori Quinn	Haakemgr@gwtc.net	
Lawrence	Paul Thomson	pthomson@lawrence.sd.us	
Pennington	Dustin Willett	Dustin.willett@pennco.org	
Perkins	Kelly Serr	Serr.perkinscoso@sdplains.com	
Ziebach	Charles Red Crow	Acs01d@gmail.com	

Table 3.8 Listing of all neighboring county emergency managers and received responses.

Record of Review (Summary)					
Existing Program/Policy/Technical Docs	Box Elder	Faith	Piedmont	Sturgis	Summerset
Comprehensive Plan	✓	NA	✓	✓	✓
Growth Management Plan	NA	NA	NA	NA	NA
Flood Damage Prevention Ordinance	✓	NA	✓	✓	✓
Floodplain Management Plan	NA	NA	NA	NA	NA
Flood Insurance Studies/Engineering studies	✓	NA	NA	✓	NA
Hazard Vulnerability Analysis	NA	NA	NA	NA	NA
Emergency Operations Plan	NA	NA	NA	✓	NA
Zoning Ordinance	✓	NA	✓	✓	✓
Building Code	✓	NA	✓	✓	✓
Drainage Ordinance	NA	NA	NA	NA	✓
Critical Facilities maps	NA	NA	NA	NA	NA
Existing Land Use maps	✓	NA	✓	✓	✓
Elevation Certificates	NA	NA	NA	NA	NA
State Hazard Mitigation Plan	NA	NA	NA	NA	NA
County 5-Year Bridge/Hwy Improvements Plan	NA	NA	NA	✓	NA
Drainage Studies	✓	NA	NA	NA	NA
Transportation Plan	✓	NA	NA	NA	NA
Crash Zone Map	✓	NA	NA	NA	NA
Subdivision Ordinance	✓	NA	NA	NA	NA
Engineering Reports (Landslides)	NA	NA	NA	✓	NA
Engineering Reports (Flooding)	✓	NA	NA	✓	NA
Sturgis Rally Traffic Plan	NA	NA	NA	✓	NA
Engineering Reports (Drainage/Stormwater)	NA	NA	NA	✓	✓
Fire Prevention Ordinance	NA	NA	NA	✓	NA
City Flood Maps	NA	NA	NA	✓	NA
USGS Groundwater Study	NA	NA	NA	NA	✓
Flood Damage Reduction System Report	NA	NA	NA	✓	NA
Air Installment Compatible Use Zone Study	✓	NA	NA	NA	NA
Curb and Gutter Plan	NA	NA	NA	✓	NA
Stormwater Best Practices Manual	NA	NA	NA	✓	NA
NA	jurisdiction does not have this program/policy/technical document				
O	jurisdiction has the program/policy/technical document, but did not review/incorporate it in the mitigation plan				
C	the jurisdiction is regulated under the County's policy/program/technical document				
✓	jurisdiction reviewed the program/policy/technical document				

Table 3.9 List of technical documents reviewed and incorporated into this Mitigation Plan Update.

A majority of natural hazards in the County have a similar likelihood of occurring anywhere in the County. Areas which are in floodplain will have a higher likelihood of flooding, the western part of the Meade County has a higher likelihood of wildfire. Certain soil types in some areas also have a higher likelihood of landslides and subsidence. Only the natural hazards from the High Probability and Low Probability Columns will be further evaluated throughout this plan. All manmade hazards and hazards in the Unlikely to Occur column will not be further evaluated in the plan. Table 4.2 below identifies the hazards that will be addressed in the plan throughout the planning process. Hazards were identified for this plan in several ways including: observing development patterns, input from jurisdictions, public meetings, planning work sessions, previous disaster declarations, consulting the *State Hazard Mitigation Plan* and research of the history of hazard occurrences located within Meade County.

Jurisdiction Identified Hazards					
Natural Hazards Identified					
	Box Elder	Faith	Piedmont	Sturgis	Summerset
Dam Failure	NA	NA	NA	L	NA
Drought	H	H	H	H	H
Earthquake	L	L	L	L	L
Extreme Cold	H	H	H	H	H
Extreme Heat	H	H	H	M	H
Flood	H	L	M	H	M
Hail	H	M	H	H	H
Heavy Rain	H	M	H	H	H
Ice Jam	NA	NA	NA	M	NA
Landslides	L	L	L	M	L
Lightning	H	M	H	H	H
Heavy Snow	H	H	H	H	H
Strong Winds	H	H	H	H	H
Tornados	M	H	M	M	M
Wildfire	M	M	H	M	H
NA	Not applicable; not a hazard to the jurisdiction				
L	Low risk; little damage potential (minor damage to less than 5% often jurisdiction)				
M	Medium risk; moderate damage potential (causing partial damage 5-10% of the jurisdiction, and irregular occurrence)				
H	High risk; signification risk/major damage potential (ex. destructive, damage to more than 10% of the jurisdiction and/or regular occurrence)				
O	Jurisdiction did not fill out risk assessment worksheet				

Table 4.2 Natural Hazards identified by each jurisdiction.

Significant Hazard Occurrences

The Stafford Act has two types of disaster declarations: emergency declarations and major disaster declarations. These two types allow the President to provide supplemental federal disaster assistance. Table 4.3 shows for the last ten years, there have been a total of seven federal disaster declarations that included Meade County since 2010.

Federal Disaster Declarations	
Incident Date	Types of Disasters
01/20/2010 – 01/26/2010	Severe Winter Storm
10/03/2013 – 10/16/2013	Severe Winter Storm, Snowstorm, and Flooding
12/24/2016 – 12/26/2016	Severe Winter Storm
05/26/2019 – 06/07/2019	Severe Storm and Flooding
06/30/2019 – 07/21/2019	Severe Storms, Tornados, and Floods
09/09/2019 – 09/26/2019	Severe Storms, Tornados, and Flooding

Table 4.3 Listing of federal disaster declarations from 2010 to March 2021.

public and reduction of hazardous fuels for landowners as part of a cost share for qualifying properties. The program also provides free fire risk assessments for property owners located in the WUI. In addition to this Meade County has recently expanded their chipping program, which will have reduced rates for developments wanting to partake in the program. The county's FireWise program have treated 311.26 acres from 2015 to 2020, including 91 treated properties and 158 directly protected structures, a map of the treatment areas can be found in Appendix F. While FireWise does try to target areas that are in high-risk areas the program doesn't have any specific area for future project and will treat and provide education to an interested landowner.

ADDRESSING VULNERABILITY: REPETITIVE LOSS PROPERTIES

Requirement §201.6(c)(2)(ii): [The risk assessment] must also address National Flood Insurance Program (NFIP) insured structures that have been repetitively damaged by floods.

Repetitive loss properties are those for which two or more losses of at least \$1,000 each have been paid under the National Flood Insurance Program (NFIP) within any 10-year period since 1978. The State NFIP Coordinator provided information. As of March 2021, the following NFIP participants and repetitive loss can be found on table 4.8. FEMA's new database does not provide specific addresses anymore, so the data only shows grand totals by county and jurisdiction. The list that was provided lists the County and each jurisdiction's participants and total losses paid out.

NFIP Participants Policy Information				
	Policy in Force	Insurance in Force	Paid Losses	Total Losses Paid
Meade County	12	\$3,017,500	12	\$35,287.27
Box Elder	71	\$6,775,000	23	\$138,990.38
Piedmont	2	\$425,000	0	0
Sturgis	72	\$11,823,100	10	\$17,493.97
Summerset	Not Reporting	Not Reporting	Not Reporting	Not Reporting

Table 4.8. NFIP participants information for policies in force, insurance, no of paid losses total losses paid and repetitive losses, March 2021.

Jurisdictions with Repetitive Loss		
	Meade County	Box Elder
Repetitive Loss Buildings (Total)	3	6
Repetitive Loss Buildings (Insured)	0	1
Repetitive Loss (Total)	5	8
Repetitive Loss (Insured)	0	2
Repetitive Loss Payments (Total)	\$28,626.70	\$104,702.46
Repetitive Loss Payments (Insured)	0	\$28,387.49
Insured Buildings with 2-3 Losses	0	1
Insured Buildings with 4 or More Losses	0	0

Table 4.9. Jurisdictions with repetitive loss, March 2021.

City of Sturgis Inventory Assets									
Name of Asset	Critical Facility	Vulnerable Pop.	Economic	Historic	Size (sq ft)	Replacement Value	Content Value	Function Use	Capacity/ Occupancy
Public Works	✓				35750	\$11,000,000	\$25,000,000	N/A	N/A
9 th St Bridge	✓				200 ft	\$1,000,000	N/A	N/A	N/A
Sewer Treatment	✓				12000	\$8,000,000	\$500,000	N/A	N/A
Hospital	✓				5.1 acre	\$10,000,000	N/A	N/A	N/A
Water Well	✓				1656	N/A	N/A	N/A	N/A
Elementary School	✓				71575	N/A	N/A	N/A	N/A
Middle School	✓				79159	N/A	N/A	N/A	N/A
Fire Ambulance Hall	✓				15280	N/A	N/A	N/A	N/A
High School	✓				161,675	N/A	N/A	N/A	N/A

Table 4.15 Critical infrastructure for the City of Sturgis as of 2021. Information was provided by the City of Sturgis.

City of Summerset Inventory Assets									
Name of Asset	Critical Facility	Vulnerable Pop.	Economic	Historic	Size (sq ft)	Replacement Value	Content Value	Function Use	Capacity/ Occupancy
Sewer Plan Main Building	✓				3,628	\$293,290	\$817,296	N/A	2
UV building	✓				294	\$34,917	\$48,448	N/A	0
SBR Greenhouse	✓					\$484,100	-	N/A	0
Maintenance Building	✓				4800	\$250,000	\$263,000	N/A	2
Plant Lift Stations	✓				-	\$258,373	-	N/A	0
Recreational Dr. Lift Station	✓				-	\$216,475	-	N/A	0
WWTP effluent filter	✓				-	\$1,879,750	-	N/A	0
Sun Valley Lift Station	✓				-	\$208,960	-	N/A	0
City Hall	✓				-	\$742,630	150,000	N/A	15

Table 4.16 Critical infrastructure for the City of Summerset as of 2021. Information was provided by the City of Summerset.

Summerset Estimated Potential Dollar Losses to Vulnerable Structures									
Type of Structure	Number of Structures			Value of Structures			Number of People		
	# in City	# in HA	% in HA	\$ in City	\$ in HA	% in HA	# in City est. 2019	# in HA	% in HA
Residential	854	72	8%	\$173,147,227	\$14,570,588	8%	2660	-	100%
Commercial	96	12	13%	\$31,797,234	\$2,446,701	8%	-	-	-
Industrial	-	-	-	-	-	-	-	-	-
Agricultural	-	-	-	-	-	-	-	-	-
Religious	-	-	-	-	-	-	-	-	-
Government	3	-	-	-	-	-	-	-	-
Education	1	-	-	-	-	-	-	-	-
Utilities	1	2	-	-	-	-	-	-	-
Total	955	86	-	\$204,944,461	\$17,017,289	-	2660	-	100%

Table 4.25 Vulnerable structures and value. Hazard specific numbers are for Flooding/Flash Flooding. All other hazards, excluding geological, would include all structures in the city. Due to proximity to Black Hills Forest and Hogback all structures are included in Wildfire. Source Meade County Tax Parcels 04/2021.

ASSESSING VULNERABILITY: ANALYZING DEVELOPMENT TRENDS

Requirement §201.6(c)(2)(ii)(C): [The plan should describe vulnerability in terms of] providing a general description of land uses and development trends within the community so that mitigation options can be considered in future land use decisions.

The land use and development trends for each jurisdiction were identified by representatives from each of the jurisdictions. Based on census data, all the communities, excluding Faith, have been experiencing growth over the last 10 years. Faith has seen a 2% decrease in the last 10 years, while the southwestern part of the county, near the Black Hills area, has seen a boom in growth³⁵. From 2010 to 2019 there has been an increase in Meade County's population of 11%. It is projected that by 2025 there will be an increase of 3.7%³⁶.

The County approves all building permits located outside of the incorporated cities. From January 2016 to April 2021, there has been a total of 1531 of all building permit types within the County. From 2016 to 2021 there has been an increase of building permits for new residential properties of 55%. From January to April of 2021, an average of 40% all building permits requested were for new homes. In Meade County from January 2016 to April 2021, there has been a total of 498 new residential and new commercial building permits.

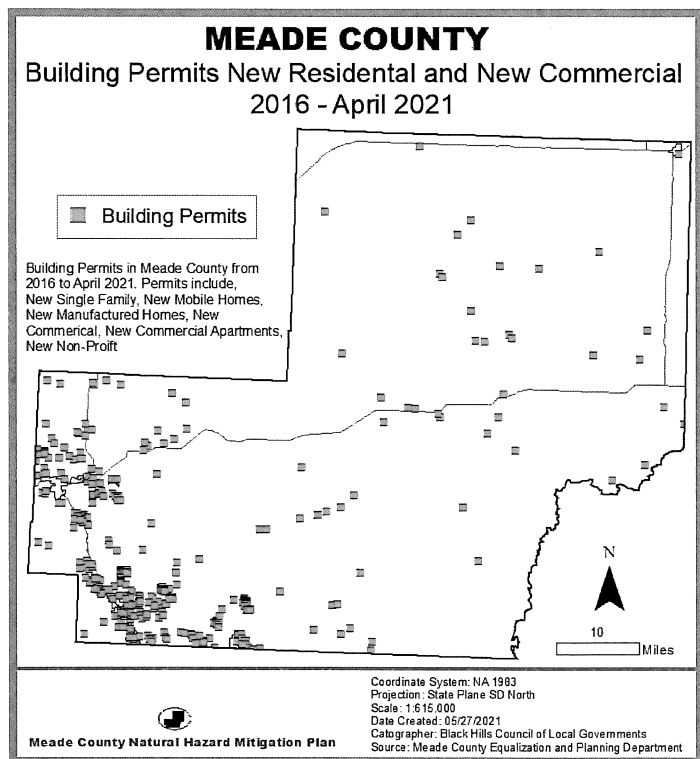


Figure 4.11 Meade new residential and new commercial building permits general location from 2016 to 2021.

The jurisdictions residential and commercial building permits from 2016 to 2021 are: Box Elder (residential 599, commercial 20), Faith (residential 7 (mobile homes), commercial 1), Sturgis (residential 456,

³⁵ U.S. Census Bureau. 2019 *City and Town Population Totals: 2010-2019; Incorporated Places and Minor civil Divisions*

³⁶ Emsi: Labor Market Analytics. *Meade County, SD*.

commercial 67), Summerset (residential 52, commercial 5). Piedmont has had no new residential or commercial permits. The City of Piedmont is encouraging development of commercial areas.

The Department of Equalization and Planning's Deputy Director of Planning is the Floodplain Administrator. All incorporated communities, excluding the City of Faith, have adopted floodplain management ordinances. Of the incorporated counties that have floodplain ordinances each has its own floodplain administrator; Box Elder's Planning and Zoning Coordinator, Summerset's Emergency Management Commissioner; Piedmont's Finance Officer, and Sturgis's City Engineer.

The county does not have zoning, but employs other land development regulations, like subdivision and floodplain development ordinances to regulate development. The county is currently working to update their subdivision ordinance #20 and road ordinance #10. Any construction that takes place in the unincorporated parts of the county requires a building permit. All jurisdictions in the county, excluding Faith, have their own building code. In the county, anyone who intends on building (or having something built) is required to go to the equalization office to apply for a building permit. Those that wish to apply for a permit are required to fill out a Building Permit Application. The completed application is then reviewed by the Meade County Planning and Equalization Department. The staff then checks, using *iWorQ*, the purposed lot for different items, such as being in a floodplain, known expansive soils, other known geological hazards. For any application that falls under any special area is required to submit additional engineering reports to mitigate any known issues. Proposed developments in flood hazard areas shall comply with the National Flood Insurance Program and associated regulatory agencies and *Meade County Ordinance No. 9*.

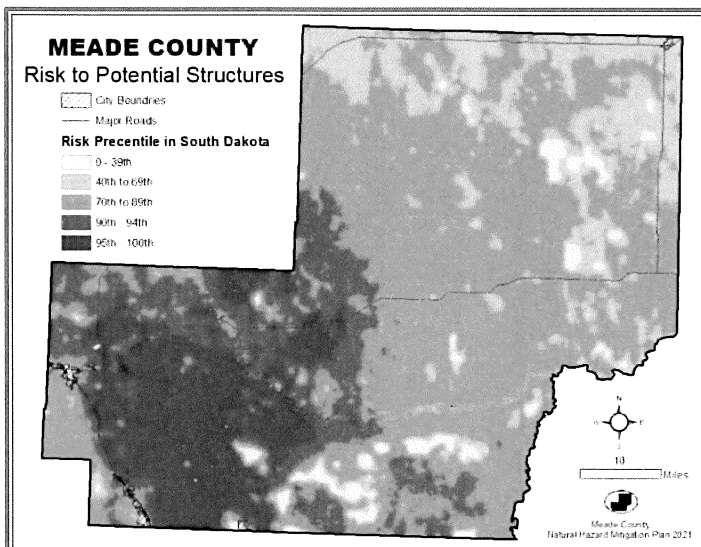


Figure 4.12. Risk to potential percentile structures. Wildfire risk is based on potential structures in an area with already existing structures. (Scott, Joe H. et al. Wildfire Risk to Communities: Spatial datasets of landscape-wide wildfire risk components for the United States.)

Major development in Meade County is happening along the I-90 corridor. According to Meade County's Department of Equalization and Planning the areas of Pleasant Valley, Elk Vale, South of Elk Creek, Peaceful Pines, and South of Buffalo Chip have seen a lot of development. The U.S. Department of Agriculture provided modeling of wildfire risk to potential structures, using data from LANDFIRE 2014. This model, *Risk to Homes in Wildfire Communities*, compares the wildfire risk to existing structures to new structures that could be constructed. In the model, jurisdictions were also given a percentile rating within the state for risk to potential structures from wildfires; Blackhawk (unincorporated) 91%, Box Elder (Pennington County and Meade County) 97%, Faith 65%, Piedmont, 98%, Sturgis 70%, and Summerset 94%³⁷.

³⁷ Scott, Joe H. et al. Wildfire Risk to Communities: Spatial datasets of landscape-wide wildfire risk components for the United States.

is that there is no drainage for the road. According to Sturgis and Meade County, no private residents have encountered any landslide conditions.

While most of the Black Hills area sees a huge influx of summer visitors, the City of Sturgis, is unique in that for one week in August the city brings in anywhere from 400,000-600,000 people for the Sturgis Motorcycle Rally. The greatest threats during this time of year are thunderstorms, high winds, hail, and tornados. Many Sturgis Rally visitor's only means of shelter are tents and motorcycles. In past mentionable events have been strong winds, which cause damage to temporary structures and thunderstorms which could be dangerous for visitors in campgrounds. One of the campgrounds, Buffalo Chip, explained that they don't have shelters for large numbers of people in the event of extreme weather. The City of Sturgis also does not have shelters for the large influx of people. The city has a Sturgis Rally Traffic Plan. During work sessions, it was mentioned that many of the larger campgrounds are not within city limits.

Parts of the city that are located in the Black Hills Forest Fire Protection District. The city's *Ordinance Title 9*, states that any person wanted to have open fires or burns within city limits or one mile of city limits, must submit a written request to the Sturgis City Manager, who will allow or deny the permit. Controlled burns permit request requires the Fire Chief to advise the City Manager on issuing the permit. The city also does not permit any outside burning, open fires, and recreational fires, during periods of poor air quality, drought, dryness, and high fire danger rating. The city is working with different agencies primarily on thinning project in the wildland urban interface. As stated in the wildfire section of this plan, one of the greatest challenges facing the city are areas that could benefit from thinning, are often located on private land. Sturgis stated to their knowledge all roads within city limits are able to handle firetrucks and there are no roads that would restrict fire equipment. Sturgis also requires that subdivisions provide secondary access but stated that the Vernan Heights could be evaluated to see if another access point would be needed.

Summerset:

The City of Summerset according to the FEMA firms maps has only one small section of the most southern point of the city with a floodplain. Flood Factor estimates a total of 276 properties with a 0.2% change of some water reaching their building⁴². This amount is predicted to remain the same in the next 30 years. Summerset's *Ordinance 150.25* designates the Floodplain Administrator is the Emergency Management Commissioner.

The city reports that there is currently an underground flooding issues in the northern section of the city at the Sun Valley Estates subdivision. The previous *Meade County Natural Hazard Plan 2016* had made mention of a drainage project at the Sun Valley Estates. The city explained that the drainage project was completed, but that the subdivision now faces new flooding issues. In 2020, the USGS completed its *Hydrogeology and Groundwater Flow in Alluvial Deposits* report, focusing on the northern section of Summerset, Sun Valley Estates. This area was originally developed on unconsolidated deposits, and due in-part to development of the surrounding area, in times of increased precipitation underground flooding occurs. In 2019 the area saw greater than normal precipitation causing this area of the city to have damaged stormwater systems, sewer infrastructure, and damages to homes with basements. Areas with the greatest damage were those along Steamboat Rd and the west side of Sun Valley Dr. The city has mentioned that somewhere between 20-30 homes had seen significant impact from flooding. It was reported that during the flooding homeowners need to run pumps in their basements, 24/7, due to incoming groundwater, which put strain on drainage system. Summerset has the USGS monitor three wells that are 15 feet deep to check the levels of water.

The previous plan update had stated that Summerset was looking into areas that may need warning sirens. The City stated that at this time they are fully covered but will need to consider Sirens would need to be reevaluated as the city continues to grow.

⁴² Flood Factor. *Summary*. Summerset

Summerset also faces a high chance of Wildfire. The City of Summerset's *Ordinance 96.11* states that the city does not allow any outside burning when the South Dakota grasslands fire danger is very high or extremely for the city. The city sits against the Black Hills National Forest and is located in a wildfire urban interface. One of the greatest threats currently is the lack of secondary access. The Sun Valley Estates subdivision currently only has one access. As of writing this plan the city is currently looking into creating a secondary access in this area.

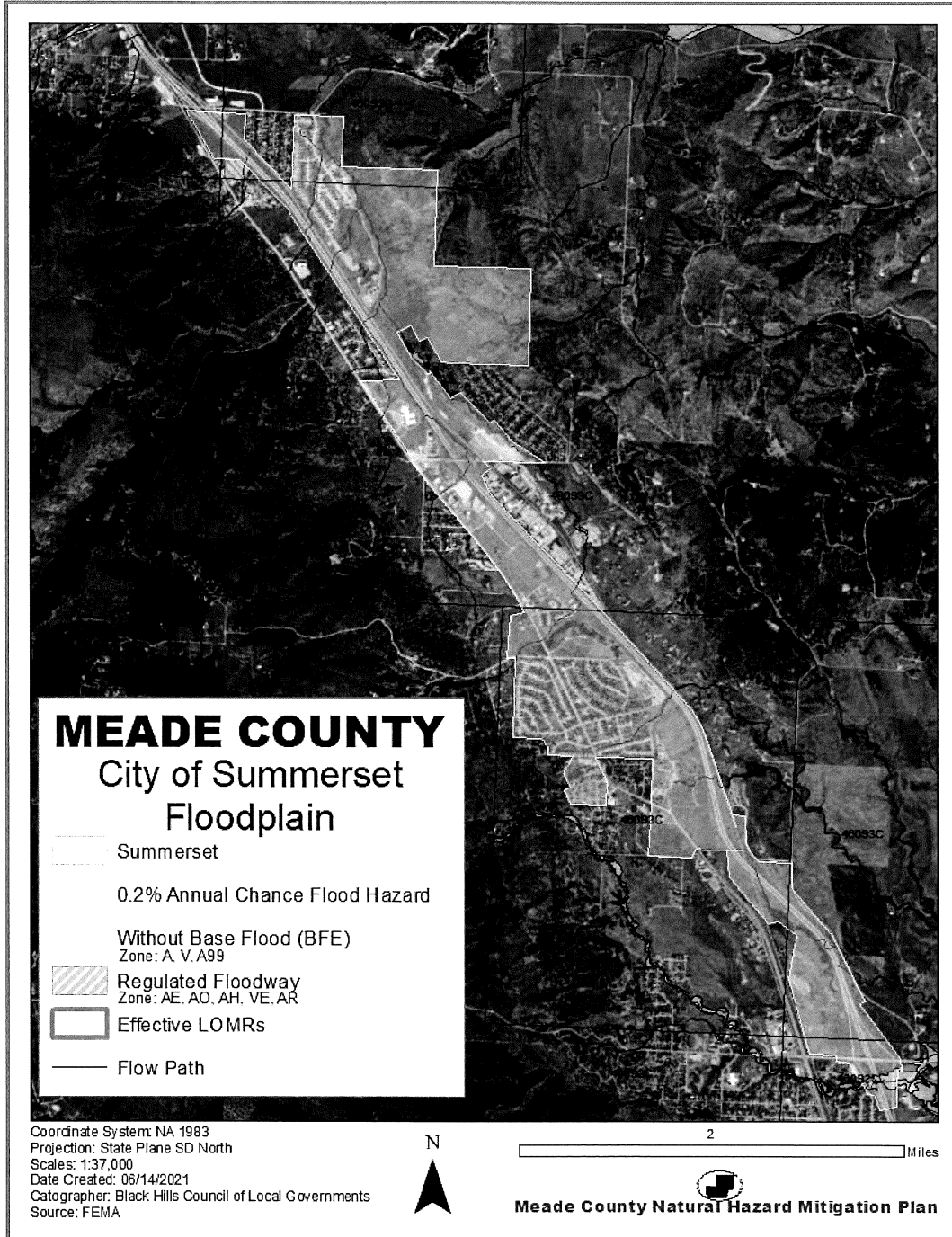


Figure 4.18. Floodplain for the City of Summerset, as of 6/15/2021. (FEMA. NFHL ArcGIS Viewer)

Goal 3: Reduce the impact of Geological Hazards on the community.

Project 1: Address inadequacies of Sly Hill Rd.

Priority	Funding Source	Timeframe	Oversight
Low	City; State; FEMA	As needed	City

*Notes: The concern is due to the geology of the Sly Hill could potentially have a future event. The road also lacks drainage.

Goal 4: Reduce the impact of Wildfire on the community.

Project 1: Evaluate additional access at Vernon Heights

Priority	Funding Source	Timeframe	Oversight
Med	City; State; FEMA	1-5 years	City

*Notes: City mentioned that Vernon Heights may need evaluated for additional access for evacuation in the event of wildfire.

City of Summerset

Goal 1: Reduce impact of flooding in the City of Summerset

Project 1: Ensure Floodplain Administrator is trained.

Priority	Funding Source	Timeframe	Oversight
High	City; FEMA	6 months	City

Project 2: Continue monitoring water levels for the Sun Valley underground water flooding.

Priority	Funding Source	Timeframe	Oversight
High	City; FEMA	ongoing	City

*Notes: City currently monitors 3 wells to check underground water levels.

Project 3: Look into working with USGS on drilling deeper wells and flood monitoring warning system for Sun Valley underground flooding.

Priority	Funding Source	Timeframe	Oversight
High	City; FEMA	6 months	City

*Notes: City wants to look into installing flood warning monitors for the Sun Valley flooding.

Goal 2: Reduce the impact of severe winter and summer storms on the community.

Project 1: Ensure siren coverage as new development is added

Priority	Funding Source	Timeframe	Oversight
High	City; State; FEMA	Ongoing	City

*Notes: City is currently covered, but as new developments are added sirens may need to be added.

Project 2: Equip the Wastewater Treatment Plant, City Hall, and Maintenance Building with backup generators to ensure services can continue during power outages.

Priority	Funding Source	Timeframe	Oversight
Medium	City; FEMA	2-5 years	City

*Notes: Critical facilities secondary power.

Project 3: Construct a storm shelter or retrofit an existing building to be used as a storm shelter

Priority	Funding Source	Timeframe	Oversight
Medium	City; State; FEMA	2-5 years	City

*Notes: The City of Summerset does not currently have a designated storm shelter.

Goal 3: Reduce the impact of Wildfire on the community.

Project 1: Evaluate additional access at Sun Valley Subdivision

Priority	Funding Source	Timeframe	Oversight
Med	City; Private; State; FEMA	1-5 Years	City

*Notes: City is working with developer to potentially have an extension on Glenwood Drive for a secondary access to Sun Valley Subdivision.

PRIORITIZATION OF MITIGATION ACTIVITIES

Requirement 201.6(c)(3)(iv) & Requirement 201.6 (c)(3)(iii)

The County and the jurisdictions had specific goals in mind that they were trying to achieve to mitigate risks. Those communities prioritized projects based on the number of people who would benefit from the project and also by the estimated or approximate total project cost. Some projects may be too large of an undertaking and therefore those projects were moved down the priority list. The plan participants were instructed that a complete Benefit Cost Analysis would be required at the time of application and the plan author advised that specific details of each project could be analyzed in closer detail during the application period.

NATIONAL FLOOD INSURANCE PROGRAM PARTICIPATION

Requirement: §201.6(c)(3)(ii): [The mitigation strategy] must also address the jurisdiction’s participation in the National Flood Insurance Program (NFIP), and continued compliance with NFIP requirements, as appropriate.

Meade County participates in the National Flood Insurance Program. There is one community, Faith, that did not participate in NFIP. According to the DFIRM published October 19, 2010, the non-participating communities are zoned entirely A and X. All of the other jurisdictions participate in NFIP. Those who participate include Box Elder, Piedmont, Sturgis, Summerset, and Meade County. The county will continue to participate and ensure compliance of the participating local jurisdictions located within the flood plain.

CITY OF SUMMERSET

DRAFT

ORDINANCE 2022

AN ORDINANCE APPROPRIATING FUNDS FOR THE FISCAL YEAR 2022

SECTION ONE

Be it ordained by the City of Summerset that the following sums are appropriated to meet the fiscal needs of the municipality for the fiscal year 2022.

<u>EXPENDITURES</u>		General Fund (Fund 101)	BBB Fund (Fund 211)	TIF # 1 Fund (Fund 302)
	410 <u>GENERAL GOVERNMENT</u>			
A	411 Legislative	\$ -		
	411.5 Contingency	\$ -		
B	412 Executive	\$ -		
C	413 Election	\$ -		
D	414 Financial & Administration	\$ -		
E	419 Government Bldg & Engineering	\$ -		
F	Total General Government	\$ -		
	420 <u>PUBLIC SAFETY</u>			
G	421 Police	\$ -		
	422 Fire	\$ -		
I	423 Inspection	\$ -		
	Total Public Safety	\$ -		
	430 <u>PUBLIC WORKS</u>			
K	431 Streets & Drainage	\$ -		
L	432 Sanitation	\$ -		
	Total Public Works	\$ -		
	440 <u>HEALTH & WELFARE</u>			
M	441 Animal Control	\$ -		
	Total Health & Welfare	\$ -		
	450 <u>CULTURE & RECREATION</u>			
O	452 Parks	\$ -		
	Total Culture & Recreation	\$ -		
	460 <u>CONSERVATION & DEVELOPMENT</u>			
P	465 Economic Development		\$ -	
Q	465.2 Planning & Zoning	\$ -		
	Total Consv & Development	\$ -	\$ -	

R	470	<u>DEBT SERVICE</u>			
		470 Debt Service	\$	-	\$ -
		Total Debt Service	\$	-	\$ -
	490	<u>MISCELLANEOUS OTHER</u>			
		499 Liquor	\$	-	
		Total Miscellaneous	\$	-	
T	510	<u>OTHER FINANCE USES</u>			
		510 Transfer Out	\$	-	\$ -
		<u>TOTAL 2021 APPROPRIATIONS</u>	\$	-	\$ -

SECTION TWO

The following designates the fund or funds to which the money derived from the following sources is applied.

<u>REVENUE</u>		General Fund (Fund 101)	BBB Fund (Fund 211)	TIF # 1 Fund (Fund 302)
300	<u>GENERAL GOVERNMENT</u>			
AA	Undesignated Fund Balance	\$	-	\$ -
BB	310 Taxes	\$	-	\$ -
CC	320 Licenses & Permits	\$	-	
DD	330 Intergovernmental Revenue	\$	-	
	340 Charges for Goods and Services		-	
EE	350 Fines & Forfeits	\$	-	
FF	360 Miscellaneous Revenue	\$	-	\$ -
	390 Transfer	\$	-	-
	<u>TOTAL MEANS OF FINANCE</u>	\$	-	\$ -

ENTERPRISE FUNDS

GG	604	<u>SEWER ENTERPRISE FUND</u>		
		Estimated Revenue	\$	-
		Total Available	\$	-

Less Estimated Appropriations	\$	-
Estimated Surplus	\$	-
Est Surplus For Future Expansion	\$	-

SECTION THREE

That there is hereby levied upon all taxable property within the City of Summerset, for the fiscal year 2022, a tax sufficient to raise the following funds:

For General Purposes	\$	-
Mill Levy		0

SECTION FOUR

The City Finance Officer is hereby authorized and directed to certify said tax levy to the Meade County Auditor, of Meade County, State of South Dakota, to the end that the same may be spread and assessed as provided by law.

Dated this 16th day of September, 2021

ATTEST:

Candace Sealey, Finance Officer

Melanie Torno, Mayor

Vote: Kitzmillier:
 Torno
 Hirsch:
 Thurman
 Butler

First Reading: Thursday, September 2, 2021
Second Reading: Thursday, September 16, 2021
Publication:

Published once at the approximate cost of \$XXXXXX