

**Mouse Anti-Cytokeratin 5/6 [D5/16B4]: MC0327, MC0327RTU7**

**Intended Use:** For Research Use Only

**Description:** Twenty human keratins are divided into acidic (pI <5.7) and basic (pI >6.0) subfamilies. Members of the acidic and basic subfamilies are found together in pairs. The composition of keratin pairs varies with the epithelial cell type, stage of differentiation, cellular growth environment, and disease state. Many studies have shown the usefulness of keratins as markers in cancer research and tumor identification.

**Specifications:**

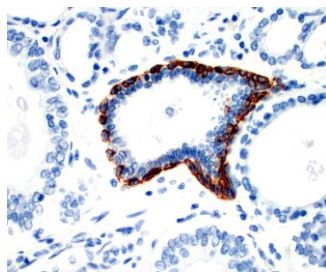
Clone: D5/16B4  
Source: Mouse  
Isotype: IgG1  
Reactivity: Human, mouse, rat  
Localization: Cytoplasm  
Formulation: Antibody in PBS pH7.4, containing BSA and ≤ 0.09% sodium azide (NaN<sub>3</sub>)  
Storage: Store at 2°- 8°C  
Applications: IHC, IF, WB  
Package:

Description	Catalog No.	Size
Cytokeratin 5/6 Concentrated	MC0327	1 ml
Cytokeratin 5/6 Prediluted	MC0327RTU7	7 ml

**IHC Procedure\*:**

Positive Control Tissue: Mesothelioma, prostate  
Concentrated Dilution: 25-200  
Pretreatment: EDTA pH8.0, 15 minutes using Pressure Cooker, or 30-60 minutes using water bath at 95°-99°C  
Incubation Time and Temp: 30-60 minutes @ RT  
Detection: Refer to the detection system manual

\* Result should be confirmed by an established diagnostic procedure.



FFPE human prostate carcinoma stained with anti-CK 5/6 using DAB

**References:**

1. Immunohistochemical Predictors of Bone Metastases in Breast Cancer Patients. Winczura, P; et al. Pathology oncology research : POR 21 1229-36 2015.
2. Attenuation of soft-tissue sarcomas resistance to the cytotoxic action of TNF- $\alpha$  by restoring p53 function. Jane Muret, et al. PloS one 7 2012.
3. Id4 protein is highly expressed in triple-negative breast carcinomas: possible implications for BRCA1 downregulation. Wen YH, et al. Breast Cancer Res Treat 135:93-102, 2012.
4. Functional characterization of the epidermal cholinergic system in vitro. Kurzen H, et al. J Invest Dermatol 126:2458-72, 2006.

Doc. 100-MC0327  
Rev. A