

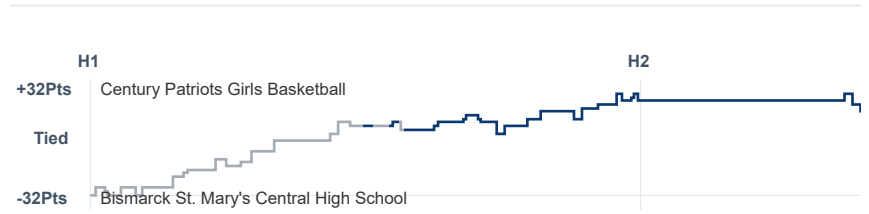
# Box Score Report

CHS @ SMCHS - Jan 6, 2023 - W 71-52

## Period Stats

Team	1	2	Final
<b>CHS</b>	<b>46</b>	25	<b>71</b>
SMCHS	20	<b>32</b>	52

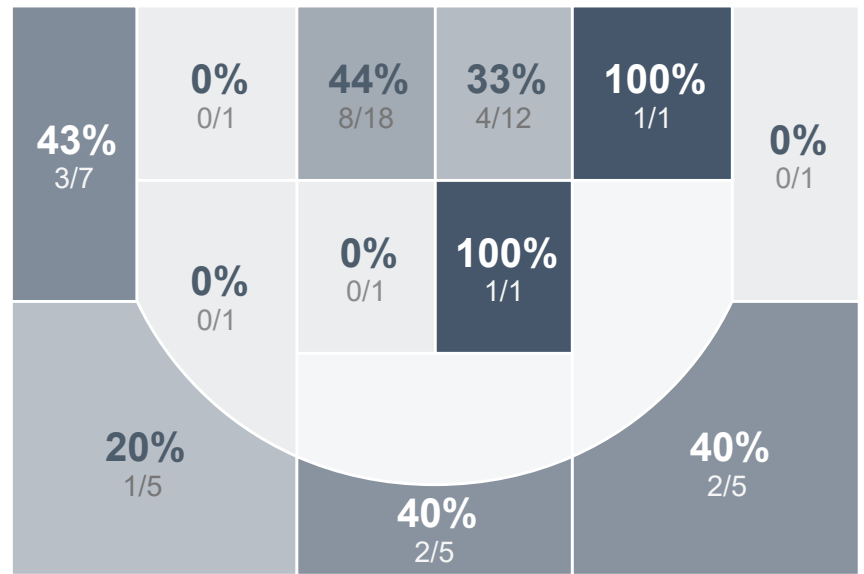
## Run Graph



## Team Stats

	CHS	SMCHS
Field Goal %	37.9%	<b>43.5%</b>
Effective Field Goal %	44.8%	<b>47.8%</b>
2FG Made/Attempted	14/35	<b>16/27</b>
2FG%	40.0%	<b>59.3%</b>
3FG Made/Attempted	<b>8/23</b>	4/19
3FG%	<b>34.8%</b>	21.1%
FT Made/Attempted	<b>19/24</b>	8/13
Free Throw Percentage	<b>79.2%</b>	61.5%
Points Per Possession	<b>1.09</b>	0.82
Transition Points	4	<b>8</b>
Points Off Turnovers	<b>23</b>	13
Second Chance Points	<b>12</b>	10
Points in the Paint	26	<b>32</b>
Offensive Rebounds	<b>17</b>	9
Defense Rebounds	18	<b>19</b>
Assists	<b>17</b>	12
Deflections	<b>9</b>	3
Steals	<b>9</b>	6
Blocks	0	<b>1</b>
Turnovers	13	<b>20</b>
Personal Fouls	16	16
Charges Taken	<b>1</b>	0

## Century Patriots Girls Basketball



## Bismarck St. Mary's Central High School

