

**L.B.J.&C Smithville  
Head Start  
2025-2026 Daily Schedule  
Classroom A**

7:00 a.m.-8:00 a.m.

8:00 a.m.-8:15 a.m.

8:15 a.m.-8:30 a.m.

8:30 a.m.-9:00 a.m.

9:00 a.m.-10:10 a.m.

10:10 a.m.-11:10 a.m.

11:10 a.m.-11:30 a.m.

11:30 a.m.-12:00 p.m.

12:00 p.m.-12:15 p.m.

12:15 p.m.-12:30 p.m.

12:30 p.m.-1:45 p.m.

1:45 p.m.-2:00 p.m.

2:00 p.m.-2:15 p.m.

2:15 p.m.-2:30 p.m.

**Teacher Planning Time**

Greet Parents and Children/ Free Choice  
Activities/Individualization

Large Group Time/ Preparation For  
Family Style Meal Service

**Breakfast**

Clean-Up/Free Choice  
Activities/Individualization/Brush  
Teeth

Outdoor Play (Gross Motor  
Activities)

Transition/Large Group Time/Preparation For  
Family Style Meal Service

**Lunch**

Clean-up/Brush Teeth/Large Group  
Time

**Small Group Activities**

Transition to Rest Time/Rest Time

**Transition to Snack**

**Snack**

Clean-up/Departure

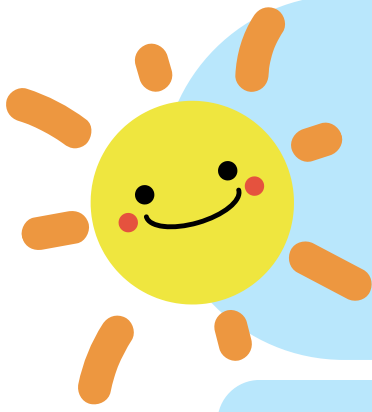
**Inclement Weather Schedule:**



Gross Motor Moderate to Vigorous Physical  
Activities in the Big Room or Structure Gross  
Motor Activities in Classroom



Revised 7/25



**L.B.J.&C Smithville  
Head Start  
2025-2026 Daily Schedule  
Classroom B**

7:00 a.m.-8:00 a.m.	<b>Teacher Planning Time</b>
8:00 a.m.-8:15 a.m.	Greet Parents and Children/ Free Choice Activities/Individualization
8:15 a.m.-8:30 a.m.	Large Group Time/ Preparation For Family Style Meal Service
8:30 a.m.-9:00 a.m.	<b>Breakfast</b>
9:00 a.m.-10:10 a.m.	Clean-Up/Free Choice Activities/Individualization/Brush Teeth
10:10 a.m.-11:10 a.m.	<b>Outdoor Play (Gross Motor Activities)</b>
11:10 a.m.-11:30 a.m.	Transition/Large Group Time/Preparation For Family Style Meal Service
11:30 a.m.-12:00 p.m.	<b>Lunch</b>
12:00 p.m.-12:15 p.m.	Clean-up/Brush Teeth/Large Group Time
12:15 p.m.-12:30 p.m.	<b>Small Group Activities</b>
12:30 p.m.-1:45 p.m.	Transition to Rest Time/Rest Time
1:45 p.m.-2:00 p.m.	<b>Transition to Snack</b>
2:00 p.m.-2:15 p.m.	<b>Snack</b>
2:15 p.m.-2:30 p.m.	Clean-up/Departure

**Inclement Weather Schedule:**



Gross Motor Moderate to Vigorous Physical Activities in the Big Room or Structure Gross Motor Activities in Classroom



Revised 7/25



# L.B.J.&C Smithville Head Start



## 2025-2026 Daily Schedule Classroom C

7:00 a.m.-8:00 a.m.	Teacher Planning Time
8:00 a.m.-8:15 a.m.	Greet Parents and Children/ Free Choice Activities/Individualization
8:15 a.m.-8:30 a.m.	Large Group Time/ Preparation For Family Style Meal Service
8:30 a.m.-9:00 a.m.	<b>Breakfast</b>
9:00 a.m.-9:15 a.m.	Clean-up/Large Group Time
9:15 a.m.-10:10 a.m.	Outdoor Play (Gross Motor Activities)
10:10 a.m.-11:10 a.m.	Free Choice Activities/Individualization/Brush Teeth
11:10 a.m.-11:30 a.m.	Transition/Large Group Time/Preparation For Family Style Meal Service
11:30 a.m.-12:00 p.m.	<b>Lunch</b>
12:00 p.m.-12:15 p.m.	Clean-up/Brush Teeth/Large Group Time
12:15 p.m.-12:30 p.m.	Small Group Activities
12:30 p.m.-1:45 p.m.	Transition to Rest Time/Rest Time
1:45 p.m.-2:00 p.m.	Transition to Snack
2:00 p.m.-2:15 p.m.	<b>Snack</b>
2:15 p.m.-2:30 p.m.	Clean-up/Departure

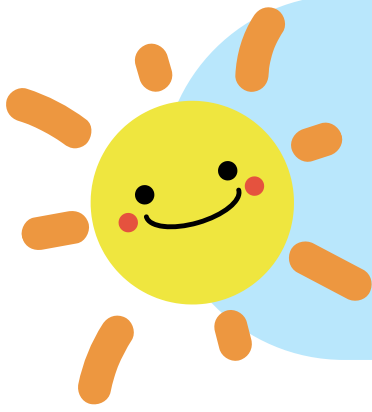
## Inclement Weather Schedule:



Gross Motor Moderate to Vigorous Physical  
Activities in the Big Room or Structure Gross  
Motor Activities in Classroom



Revised 7/25



# L.B.J.&C Smithville Head Start



## 2025-2026 Daily Schedule Classroom D

7:00 a.m.-8:00 a.m.

Teacher Planning Time

8:00 a.m.-8:15 a.m.

Greet Parents and Children/ Free Choice  
Activities/Individualization

8:15 a.m.-8:30 a.m.

Large Group Time/ Preparation For  
Family Style Meal Service

8:30 a.m.-9:00 a.m.

**Breakfast**

9:00 a.m.-9:15 a.m.

Clean-up/Large Group Time

9:15 a.m.-10:10 a.m.

Outdoor Play (Gross Motor  
Activities)

10:10 a.m.-11:10 a.m.

Free Choice  
Activities/Individualization/Brush  
Teeth

11:10 a.m.-11:30 a.m.

Transition/Large Group Time/Preparation For  
Family Style Meal Service

11:30 a.m.-12:00 p.m.

**Lunch**

12:00 p.m.-12:15 p.m.

Clean-up/Brush Teeth/Large Group  
Time

12:15 p.m.-12:30 p.m.

Small Group Activities

12:30 p.m.-1:45 p.m.

Transition to Rest Time/Rest Time

1:45 p.m.-2:00 p.m.

Transition to Snack

2:00 p.m.-2:15 p.m.

**Snack**

2:15 p.m.-2:30 p.m.

Clean-up/Departure

## Inclement Weather Schedule:



Gross Motor Moderate to Vigorous Physical  
Activities in the Big Room or Structure Gross  
Motor Activities in Classroom



Revised 7/25