

Banners



# SIGNAGE & SPECIALTY PRODUCTS

Decals



Badges



Signage



Stamps



# Plastic Badges

## Full Color Badges

Full color badges offer vivid color at an economy price.

**Process:** Digital Full Color; printed on one side only

**Material:** 1/16" thick matte white plastic polystyrene

**Production Time:** 2 working days

**Art Set-up Charge:** FREE (fees may apply if artwork is not print ready; see General Information pages for more details)

**Attachments:** Includes either a pin, swivel clip, or magnetic fastener. Other fasteners are available and can be found at the end of the Badges category.



## Full Color Badges

Item Number	H" x W"	1	25	50	75	100
A. ZFC-00	3/4" x 3"	\$10.25	\$9.75	\$8.70	\$7.20	\$5.15
ZFC-1	1" x 3"	\$10.45	\$9.95	\$8.90	\$7.30	\$5.25
ZFC-2	1" x 3 1/2"	\$10.75	\$10.20	\$9.15	\$7.50	\$5.40
ZFC-3	1 1/4" x 3"	\$10.65	\$10.10	\$9.05	\$7.45	\$5.35
B. ZFC-4	1 1/2" x 3"	\$10.75	\$10.20	\$9.15	\$7.50	\$5.40
ZFC-5	2" x 3"	\$11.00	\$10.45	\$9.35	\$7.70	\$5.50
ZFC-6	7/8" x 3 1/4"	\$10.55	\$10.00	\$8.95	\$7.40	\$5.30



A.



B.

## Full Color Shaped Badges

When you want something just a little different, shaped badges are the perfect way to change things up.

**Process:** Digital Full Color; printed on one side only

**Material:** 1/16" thick matte white plastic polystyrene

**Production Time:** 2 working days

**Art Set-up Charge:** FREE — no die charge! (fees may apply if artwork is not print ready; see General Information pages for more details)

**Attachments:** Includes either a pin, swivel clip, or magnetic fastener. Other fasteners are available and can be found at the end of the Badges category.



## Full Color Shaped Badges

Item Number	H" x W"	1	25	50	75	100
A. ZFC-SB	1 1/2" x 3"	\$11.90	\$11.30	\$10.10	\$8.35	\$5.95
B. ZFC-SC	1 1/4" x 3 3/4"	\$12.15	\$11.55	\$10.35	\$8.50	\$6.10
C. ZFC-SD	1 1/8" x 3"	\$11.70	\$11.10	\$9.95	\$8.20	\$5.85
D. ZFC-SE	2" x 3" Oval	\$12.25	\$11.65	\$10.40	\$8.55	\$6.15
E. ZFC-SF	3" diameter	\$12.85	\$12.20	\$10.90	\$9.00	\$6.45
F. ZFC-SG	2" diameter	\$11.80	\$11.20	\$10.05	\$8.25	\$5.90

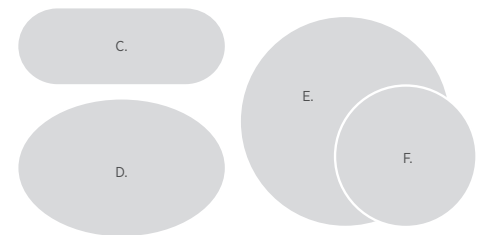


A.



B.

## Additional Shapes Available



- (R) • Pricing is based on all badges printing the same artwork
- Variable copy on static design is included; desired copy changes must be sent in electronically
- If bleeds are desired, artwork will need to extend 1/8" from the edge
- PMS color match not guaranteed
- Full color badges have round corners. If square corners are wanted, this needs to be specified when ordering
- If no fastener is noted, a pin back will be used
- Specialty Stocks can be used; call for quote. Available stocks can be found in the General Information pages at the back of the catalog
- Custom sizes available; call for quote
- Small printed badge sample available
- Printed sample available in all shapes except ZFC-SF

## Full Color Erasable Badges

Write, wipe, and reuse with these erasable badges. They can be used time and time again to help you save money!

**Process:** Digital Full Color; printed on one side only

**Material:** 1/8" thick white plastic polystyrene with dry erase laminate

**Production Time:** 3 working days

**Art Set-up Charge:** FREE (fees may apply if artwork is not print ready; see General Information pages for more details)

**Attachments:** Includes either a pin, swivel clip, or magnetic fastener. Other fasteners are available and can be found at the end of the Badges category.



A.

## Full Color Erasable Badges

Item Number	H" x W"	1	25	50	75	100
ZFE-0101	1" x 3"	\$8.20	\$7.80	\$6.95	\$5.75	\$4.10
ZFE-0104	1½" x 3"	\$9.00	\$8.55	\$7.65	\$6.30	\$4.50
A. ZFE-0105	2" x 3"	\$9.80	\$9.30	\$8.35	\$6.85	\$4.90

- (R) • Pricing is based on all badges printing the same artwork  
 • Variable copy on static design is included; desired copy changes must be sent in electronically  
 • If bleeds are desired, artwork will need to extend 1/8" from the edge  
 • PMS color match not guaranteed
- If no fastener is noted, a pin back will be used  
 • Low odor dry erase markers recommended, markers not included  
 • Custom sizes available; call for quote  
 • Small printed badge sample available

## Full Color Snap-on Badges

Increase the lifetime of your badge with the superior clarity of a clear snap-on badge.

**Process:** Digital Full Color; printed on one side only

**Full Color Badge:** 1/8" thick white plastic polystyrene with plastic cover

**Production Time:** 2 working days

**Art Set-up Charge:** FREE (fees may apply if artwork is not print ready; see General Information pages for more details)

**Attachments:** Includes either a pin, swivel clip, or magnetic fastener. Other fasteners are available and can be found at the end of the Badges category.



A. Full Color Plastic Badge

## Full Color Snap-on Badges

Item Number	Description	H" x W"	1	25	50	75	100
A. ZDP-1	Full Color Badge	1" x 3"	\$11.85	\$11.25	\$10.05	\$8.30	\$5.95
ZDP-4	Full Color Badge	1½" x 3"	\$12.95	\$12.30	\$11.00	\$9.05	\$6.50

- (R) • Pricing is based on all badges printing the same artwork  
 • Variable copy on static design is included; desired copy changes must be sent in electronically  
 • If bleeds are desired, artwork will need to extend 1/8" from the edge  
 • PMS color match not guaranteed
- If no fastener is noted, a pin back will be used  
 • Only available in sizes listed  
 • Available typestyles can be found in the General Information pages at the back of the catalog  
 • Badges have a specific corner radius; plastic cover will not work with standard full color or engraved badges  
 • Small printed badge sample available

## Full Color Badge Talkers

Add a badge talker to any plastic badge to promote sales, celebrate holidays, recognize employee achievements, and more.

**Process:** Digital Full Color; printed on one side only

**Material:** 1/2" thick white plastic polystyrene

**Production Time:** 2 working days

**Art Set-up Charge:** FREE (fees may apply if artwork is not print ready; see General Information pages for more details)



A.

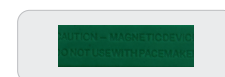


B.

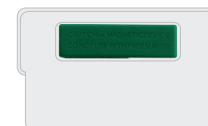
## Full Color Badge Talkers

Item Number	Description	H" x W" Visual Area when attached to Badge	1	25	50	75	100
A. ZFC-171A	Half circle for 1" x 3" Badge	1" x 2½"	\$4.25	\$4.05	\$3.60	\$2.95	\$2.15
ZFC-174A	Half circle for 1½" x 3" Badge	1" x 2½"	\$4.30	\$4.10	\$3.65	\$3.00	\$2.15
B. ZFC-171B	Rectangle for 1" x 3" Badge	7/8" x 2¾"	\$4.25	\$4.05	\$3.60	\$2.95	\$2.15
ZFC-174B	Rectangle for 1½" x 3" Badge	7/8" x 2¾"	\$4.30	\$4.10	\$3.65	\$3.00	\$2.15

- (R) • Pricing is based on all badges printing the same artwork  
 • Variable copy on static design is included; desired copy changes must be sent in electronically  
 • If bleeds are desired, artwork will need to extend 1/8" from the edge
- PMS color match not guaranteed  
 • Intended to be used with a magnetic fastener on the badge  
 • Only available in sizes listed  
 • Printed sample available for ZFC-174A and ZFC-174B



Backside of 1" x 3" Badge with Magnetic Fastener



Backside of Badge Talker placed over Magnetic Fastener on back of badge

# Wood, Acrylic & Metallic Badges

## Full Color Wood Badges

Applying a full color element to the wood badges offers a timeless look with a natural appeal!

**Process:** Digital Full Color; printed on one side only

**Material:** 1/8" natural alder wood (finished)

**Production Time:** 2 working days

**Art Set-up Charge:** FREE (fees may apply if artwork is not print ready; see General Information pages for more details)

**Attachments:** Includes either a pin, swivel clip or magnetic fastener. Other fasteners are available and can be found at the end of the Badges category.



## Full Color Wood Badges

Item Number	H" x W"	1	25	50	75	100
ZWD-2001	1" x 3"	\$9.10	\$8.65	\$8.20	\$7.75	\$7.30
A. ZWD-2004	1 1/2" x 3"	\$10.50	\$9.95	\$9.45	\$8.90	\$8.40
B. ZWD-2005	2" x 3"	\$12.50	\$11.90	\$11.25	\$10.65	\$10.00

- (R) • Pricing is based on all badges printing the same artwork  
 • Variable copy on static design is included; desired copy changes must be sent in electronically  
 • If bleeds are desired, artwork will need to extend 1/8" from the edge  
 • If no fastener is noted, a pin back will be used  
 • Default is round corners. If square corners are wanted, this needs to be specified when ordering
- Artwork cannot have anything colored white; it will not print  
 • Due to the natural characteristics of wood, the coloration and grain pattern may vary from one badge to the next  
 • Light colors are NOT recommended as they will not show up well on the natural wood colored surface  
 • Custom sizes available; call for quote  
 • Small full color badge sample available

## Full Color Clear Acrylic Badges

With vibrant color and depth, these clear acrylic badges are eye-catching and offer a classy look for the every day badge.

**Process:** Digital Full Color; printed subsurface on one side only

**Material:** 1/8" clear acrylic

**Production Time:** 3 working days

**Art Set-up Charge:** FREE (fees may apply if artwork is not print ready; see General Information pages for more details)

**Attachments:** Includes either a pin, swivel clip, or magnetic fastener. Other fasteners are available and can be found at the end of the Badges category.



## Full Color Clear Acrylic Badges

Item Number	H" x W"	1	25	50	75	100
ZCA-401	1" x 3"	\$12.90	\$12.25	\$11.60	\$10.95	\$10.30
A. ZCA-404	1 1/2" x 3"	\$14.85	\$14.10	\$13.35	\$12.60	\$11.90
B. ZCA-405	2" x 3"	\$17.00	\$16.15	\$15.30	\$14.45	\$13.60

- (R) • Pricing is based on all badges printing the same artwork  
 • Variable copy on static design is included; desired copy changes must be sent in electronically  
 • A white vinyl is placed behind printed artwork; covering the entire back side of badge
- If bleeds are desired, artwork will need to extend 1/8" from the edge  
 • Default is round corners. If square corners are wanted, this needs to be specified when ordering  
 • PMS color match not guaranteed
- If no fastener is noted, a pin back will be used  
 • Custom sizes available; call for quote  
 • Small printed badge sample available

## Full Color Metallic Badges

Double the "wow factor" with a full color imprint on a beveled metallic backer.

**Process:** Digital Full Color; printed on one side only

**Material:** Gold or Silver Flexibrass® on metal badge

**Production Time:** 3 working days

**Art Set-up Charge:** FREE (fees may apply if artwork is not print ready; see General Information pages for more details)

**Attachments:** Includes either a pin, swivel clip, or magnetic fastener. Other fasteners are available and can be found at the end of the Badges category.



## Full Color Metallic Badges

Gold	Silver	Imprint Size H" x W"	Overall Size H" x W"	1	25	50	75	100
A. ZMB-22G	ZMB-22S	1 1/16" x 2 1/16"	1" x 3"	\$15.60	\$14.80	\$14.05	\$12.50	\$10.90
ZMB-23G	ZMB-23S	1 1/8" x 2 5/8"	1 1/2" x 3"	\$17.10	\$16.25	\$15.40	\$13.70	\$11.95
ZMB-24G	ZMB-24S	1 5/8" x 3"	2" x 3 1/2"	\$19.30	\$18.35	\$17.35	\$15.45	\$13.50
ZMB-25G	ZMB-25S	1 1/16" x 2 1/4" Oval	2" x 2 1/2" Oval	\$18.10	\$17.20	\$16.30	\$14.50	\$12.65

- (R) • Pricing is based on all badges printing the same artwork  
 • Variable copy on static design is included; desired copy changes must be sent in electronically  
 • If no fastener is noted, a pin back will be used  
 • Bleeds are not available
- PMS color match not guaranteed  
 • If white ink is desired, this needs to be custom quoted  
 • Only available in square corners and sizes listed  
 • Small printed badge sample available in both silver and gold

**Full Color Sublimated Plastic Badges**

High gloss finish comes together with superior color vibrancy and image clarity in sublimated badges.

**Process:** Full Color Sublimation; sublimated on one side only

**Material:** 3/8" plastic reinforced with fiberglass; gloss finish

**Production Time:** 3 working days

**Art Set-up Charge:** FREE (fees may apply if artwork is not print ready; see General Information pages for more details)

**Attachments:** Includes either a pin, swivel clip, or magnetic fastener.

Other fasteners are available and can be found at the end of the Badges category.



A.



**Full Color Sublimated Plastic Badges**

Item Number	H" x W"	1	25	50	75	100
A. NNB-011	1" x 3"	\$12.95	\$12.30	\$11.65	\$11.00	\$10.35
NNB-012	1 1/4" x 3"	\$13.35	\$12.70	\$12.00	\$11.35	\$10.70
NNB-013	1 1/2" x 3"	\$14.40	\$13.70	\$12.95	\$12.25	\$11.50
NNB-014	2" x 3"	\$14.95	\$14.20	\$13.45	\$12.70	\$11.95
NNB-015	1 1/2" x 3" Oval	\$14.40	\$13.70	\$12.95	\$12.25	\$11.50

- (R) • Pricing is based on all badges printing the same artwork  
 • Variable copy on static design is included; desired copy changes must be sent in electronically
- If bleeds are desired, artwork will need to extend 1/8" from the edge  
 • PMS color match not guaranteed
- If no fastener is noted, a pin back will be used  
 • Only available in sizes listed  
 • Small sublimated badge sample available

**Full Color Sublimated Metal Badges**

The sublimated metal badges provide long-lasting color and a refined look that's sure to get noticed.

**Process:** Full Color Sublimation; sublimated on one side only

**Material:** .020" aluminum

**Production Time:** 3 working days

**Art Set-up Charge:** FREE (fees may apply if artwork is not print ready; see General Information pages for more details)

**Attachments:** Includes either a pin, swivel clip, or magnetic fastener.

Other fasteners are available and can be found at the end of the Badges category.



C.



B.

**Full Color Sublimated Metal Badges**

Silver	White	H" x W"	1	25	50	75	100
NDB-D301	NDB-D201	1" x 3"	\$14.35	\$13.65	\$12.90	\$12.20	\$11.50
NDB-D303	NDB-D203	1 1/4" x 3"	\$14.65	\$13.90	\$13.20	\$12.45	\$11.70
B. NDB-D304	NDB-D204	1 1/2" x 3"	\$14.95	\$14.20	\$13.45	\$12.70	\$11.95
NDB-D305	C. NDB-D205	2" x 3"	\$15.80	\$15.00	\$14.20	\$13.45	\$12.65

- (R) • Pricing is based on all badges printing the same artwork  
 • Variable copy on static design is included; desired copy changes must be sent in electronically  
 • Artwork cannot have anything colored white; it will not print
- If bleeds are desired, artwork will need to extend 1/8" from the edge  
 • PMS color match not guaranteed  
 • If no fastener is noted, a pin back will be used  
 • Custom sizes available for quantities of 100+ only; call for quote  
 • Small printed badge sample available in both silver and white



## Engraved Snap-on Badges

Increase the lifetime of your badge with the superior clarity of a clear snap-on badge.

**Process:** Engraved; on one side only

**Engraved Badge:** 1/16" 2-ply plastic with plastic cover

**Production Time:** 2 working days

**Art Set-up Charge:** FREE (fees may apply if artwork is not print ready; see General Information pages for more details)

**Attachments:** Includes either a pin, swivel clip, or magnetic fastener. Other fasteners are available and can be found at the end of the Badges category.



C. Engraved Plastic Badge



## Engraved Snap-on Badges

Item Number	Description	H" x W"	1	25	50	75	100
4DP-1	Engraved Badge	1" x 3"	\$12.35	\$12.10	\$11.85	\$11.60	\$11.35
C. 4DP-4	Engraved Badge	1 1/2" x 3"	\$14.25	\$13.95	\$13.70	\$13.40	\$13.10

- (R) • Pricing is based on all badges engraving the same artwork  
 • Variable copy on static design is included; desired copy changes must be sent in electronically  
 • If no fastener is noted, a pin back will be used  
 • Only available in sizes listed

- Available timesteps can be found in the General Information pages at the back of the catalog  
 • Badges have a specific corner radius; plastic cover will not work with standard full color or engraved badges  
 • Small engraved badge sample available

## Engraved Wood Badges

These unique engraved wood badges offer a natural look that is sure to impress!

**Process:** Engraved; engraved on one side only

**Material:** 1/16" natural alder wood (finished)

**Production Time:** 2 working days

**Art Set-up Charge:** FREE (fees may apply if artwork is not print ready; see General Information pages for more details)

**Attachments:** Includes either a pin, swivel clip, or magnetic fastener. Other fasteners are available and can be found at the end of the Badges category.



A.

B.



## Engraved Wood Badges

Item Number	Imprint Size H" x W"	Overall Size H" x W"	1	25	50	75	100
A. 4WB-1	3/4" x 2 3/4"	1" x 3"	\$9.75	\$9.45	\$9.15	\$8.85	\$8.60
B. 4WB-4	1 1/4" x 2 3/4"	1 1/2" x 3"	\$11.10	\$10.75	\$10.45	\$10.10	\$9.75
4WB-5	1 3/4" x 2 3/4"	2" x 3"	\$12.55	\$12.15	\$11.80	\$11.40	\$11.05

- (R) • Pricing is based on all badges engraving the same artwork  
 • Variable copy on static design is included; desired copy changes must be sent in electronically  
 • If no fastener is noted, a pin back will be used  
 • Available timesteps can be found in the General Information pages at the back of the catalog
- Default is round corners. If square corners are wanted, this needs to be specified when ordering  
 • Due to the natural characteristics of wood, the coloration and grain pattern may vary from one badge to the next  
 • Custom sizes available; call for quote  
 • Small engraved badge sample available

# Engraved Metallic Badges

## Engraved Metallic Badges

Professional yet elegant, engraved metallic badges are a symbol of status.

**Process:** Engraved; engraved on one side only

**Material:** Gold, Silver, or Black Flexibrass® on metal badge

**Production Time:** 3 working days

**Art Set-up Charge:** FREE (*fees may apply if artwork is not print ready; see General Information pages for more details*)

**Attachments:** Includes either a pin, swivel clip, or magnetic fastener.

Other fasteners are available and can be found at the end of the Badges category.



A. Typestyle 2036 & 19 (Futura Std Book & Futura Extra Bold)



B. Typestyle 84C (News Gothic Regular)



E. Pocket Badge, Typestyle 253R (Bauhaus Medium)



C. Typestyle 154R (Kabel Book)



D. Typestyle 46R & 170R (Avant Garde Medium & ITC American Typewriter Std Medium)



## Engraved Metallic Badges

Gold	Silver	Black/Gold	Imprint Size H" x W"	Overall Size H" x W"	1	25	50	75	100
4MB-22G	A. 4MB-22S	4MB-22B	1 1/16" x 2 1/16"	1" x 3"	\$17.05	\$16.20	\$15.35	\$14.50	\$13.65
4MB-23G	4MB-23S	B. 4MB-23B	1 1/8" x 2 5/8"	1 1/2" x 3"	\$19.15	\$18.20	\$17.25	\$16.30	\$15.30
C. 4MB-24G	4MB-24S	4MB-24B	1 5/8" x 3"	2" x 3 1/2"	\$20.10	\$19.10	\$18.10	\$17.10	\$16.10
4MB-25G	4MB-25S	D. 4MB-25B	1 7/16" x 2 1/4" Oval	2" x 2 1/2" Oval	\$20.50	\$19.45	\$18.45	\$17.45	\$16.40
E. 4MB-22PBG	4MB-22PBS	4MB-22PBB	1 1/16" x 2 1/16"	1" x 3"	\$15.90	\$15.10	\$14.30	\$13.50	\$12.70

- (R)
- Pricing is based on all badges engraving the same artwork
  - Variable copy on static design is included; desired copy changes must be sent in electronically
  - Available in gold, silver, or black/gold metallic
  - If no fastener is noted, a pin back will be used

- Available typestyles can be found in the General Information pages at the back of the catalog
- Pocket badge does not include additional fastener
- Only available in square corners and sizes listed
- Small engraved badge sample available in gold, silver, and black/gold metallic



**Full Color I.D. Badges**

Photo identification for security personnel, school employees, and health care staff is easy with full color I.D. badges.

**Process:** Digital Full Color

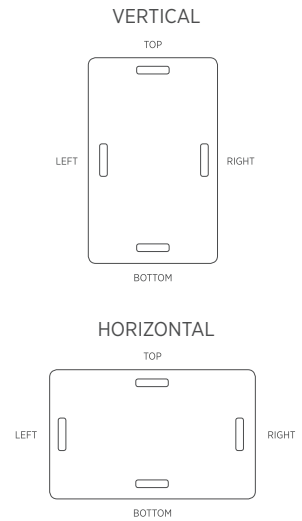
**Material:** 1/2" thick matte white plastic polystyrene

**Production Time:** 2 working days

**Art Set-up Charge:** FREE (fees may apply if artwork is not print ready; see General Information pages for more details)



**Slot Location Options**



**Full Color I.D. Badges**

Item Number	H" x W"	Orientation	Imprint/Slot	1	25	50	75	100
ZFC-33V	3 3/8" x 2 1/8"	Vertical	Single Sided - No Slot	\$5.35	\$5.10	\$4.80	\$4.55	\$4.30
ZFC-33VD	3 3/8" x 2 1/8"	Vertical	Double Sided - No Slot	\$6.10	\$5.80	\$5.50	\$5.20	\$4.90
ZFC-33VS	3 3/8" x 2 1/8"	Vertical	Single Sided - With Slot	\$5.35	\$5.10	\$4.80	\$4.55	\$4.30
ZFC-33VSD	3 3/8" x 2 1/8"	Vertical	Double Sided - With Slot	\$6.10	\$5.80	\$5.50	\$5.20	\$4.90
ZFC-33H	2 1/8" x 3 3/8"	Horizontal	Single Sided - No Slot	\$5.35	\$5.10	\$4.80	\$4.55	\$4.30
ZFC-33HD	2 1/8" x 3 3/8"	Horizontal	Double Sided - No Slot	\$6.10	\$5.80	\$5.50	\$5.20	\$4.90
A. ZFC-33HS	2 1/8" x 3 3/8"	Horizontal	Single Sided - With Slot	\$5.35	\$5.10	\$4.80	\$4.55	\$4.30
ZFC-33HSD	2 1/8" x 3 3/8"	Horizontal	Double Sided - With Slot	\$6.10	\$5.80	\$5.50	\$5.20	\$4.90

**Product Upgrades**

Item Number	Description	Price Each
2BF-J22	Strap Clip	\$1.50
PLASTSTRAP	Plastic Strap	\$1.25
2BF-J45BL	Black Lanyard (1/2" x 35")	\$3.20

- (R) • Pricing is based on all badges printing the same artwork  
 • Variable copy on static design is included; desired copy changes must be sent in electronically  
 • If bleeds are desired, artwork will need to extend 1/8" from the edge  
 • PMS color match not guaranteed  
 • Please specify slot location when ordering. See diagrams for options

- If slot location is not identified, top is default and will be used based on orientation ordered  
 • Custom sizes available; call for quote  
 • Printed sample available on item ZFC-33H

**Badge Fasteners & Accessories**

Each badge, excluding pocket badges and I.D. badges, includes either a pin, swivel clip, or magnetic fastener. Other fasteners are available for an additional charge.

**Production Time:** 2 working days




**Badge Fasteners & Accessories**

STANDARD	Description	Price Each
B. 2BF-J21	Additional Pin	\$1.40
C. 2BF-J24	Additional Swivel Clip	\$1.60
D. 2BF-J79	Additional Magnetic Fastener	\$1.80
PREMIUM		
E. 2BF-J22	Strap Clip	\$1.50
F. 2BF-J11	Military Tack	\$2.05
G. 2BF-J45BL	Lanyard, 1/2" x 35"	\$3.20
H. 2BF-J18	Clear Plastic Pocket Badge Adaptor	\$1.95
I. PLASTSTRAP	Plastic strap	\$1.25

\*Pocket Badge adaptor only available for rectangular badges that have a height of 1 1/4" or more. Adaptor comes with adhesive.



(R)



Phone: 866-628-3290  
Email: [NSPservice@navitor.com](mailto:NSPservice@navitor.com)

1650 Tower Boulevard  
North Mankato, MN 56003

ASI: 81500 | PPAI: 112837  
PSDA Member | SAGE 53495

©2024 Navitor Specialty Products