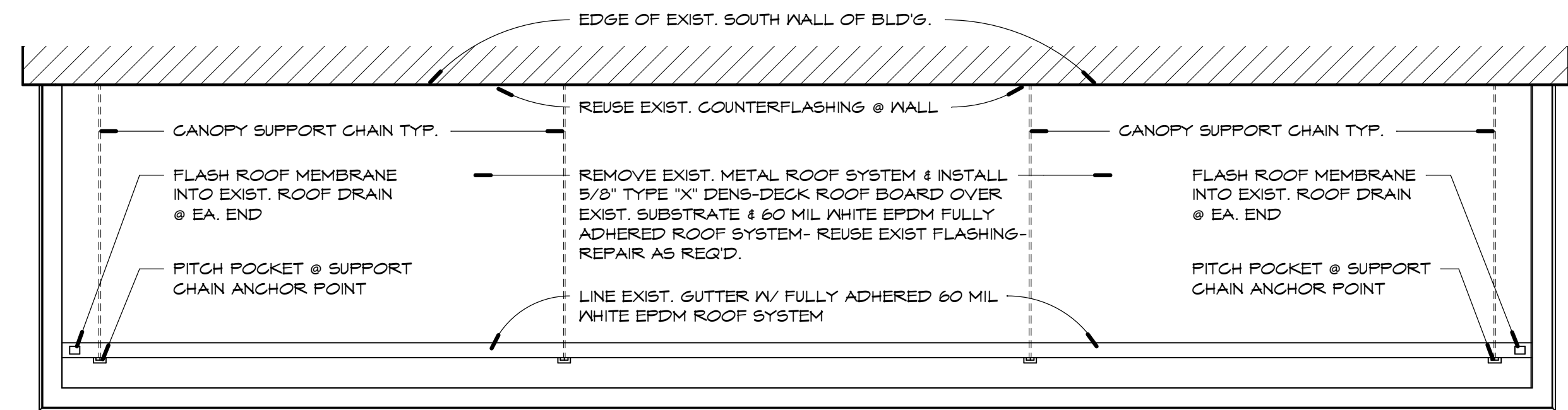
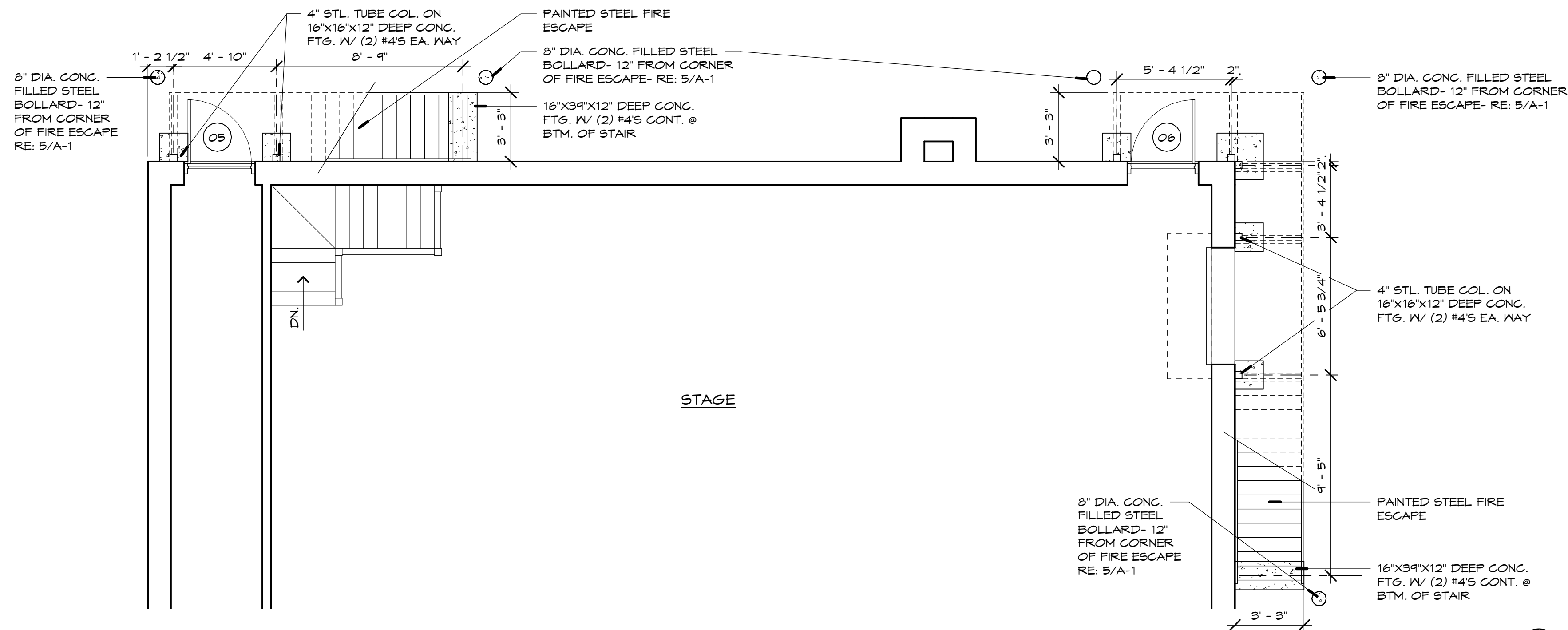


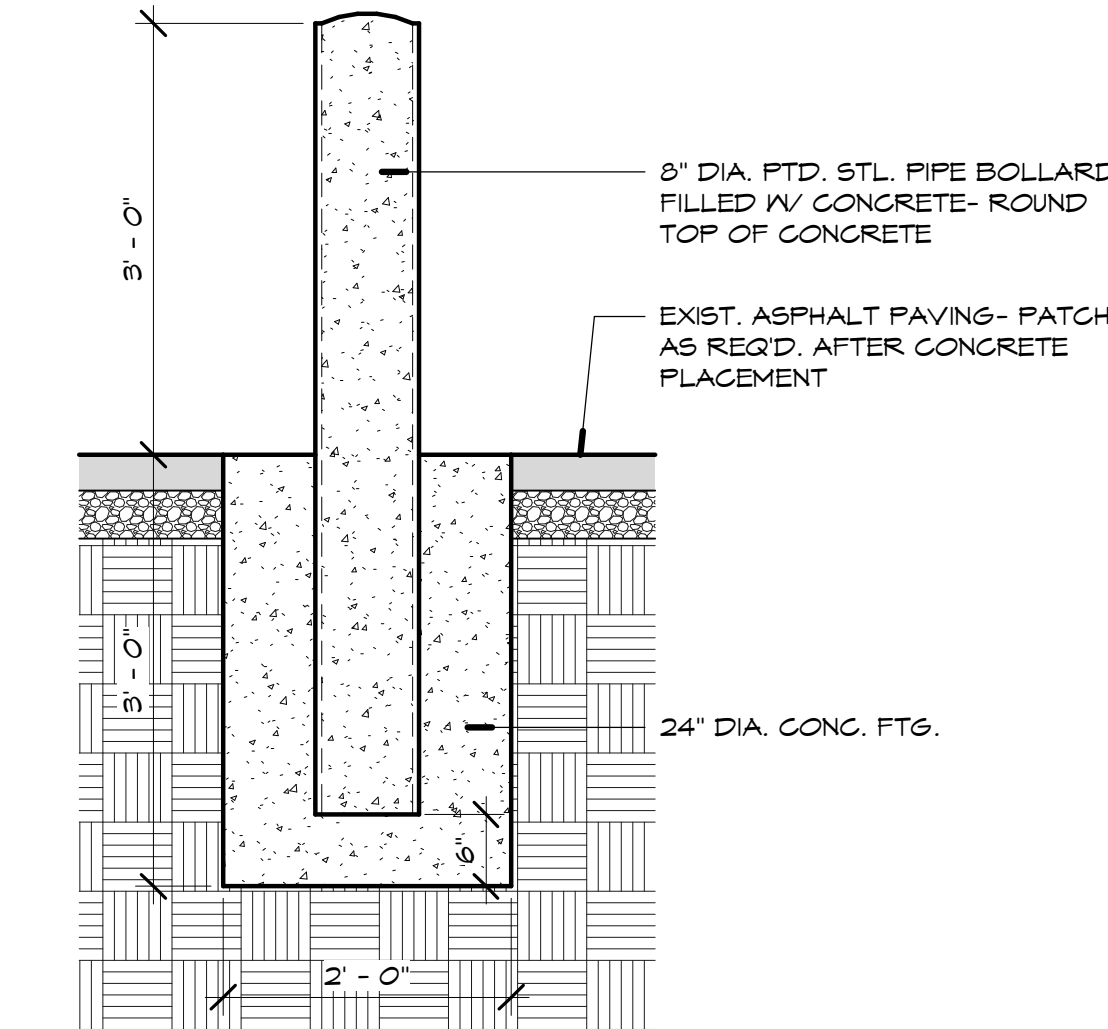
1 PARTIAL LOBBY PLAN
1/4" = 1'-0"



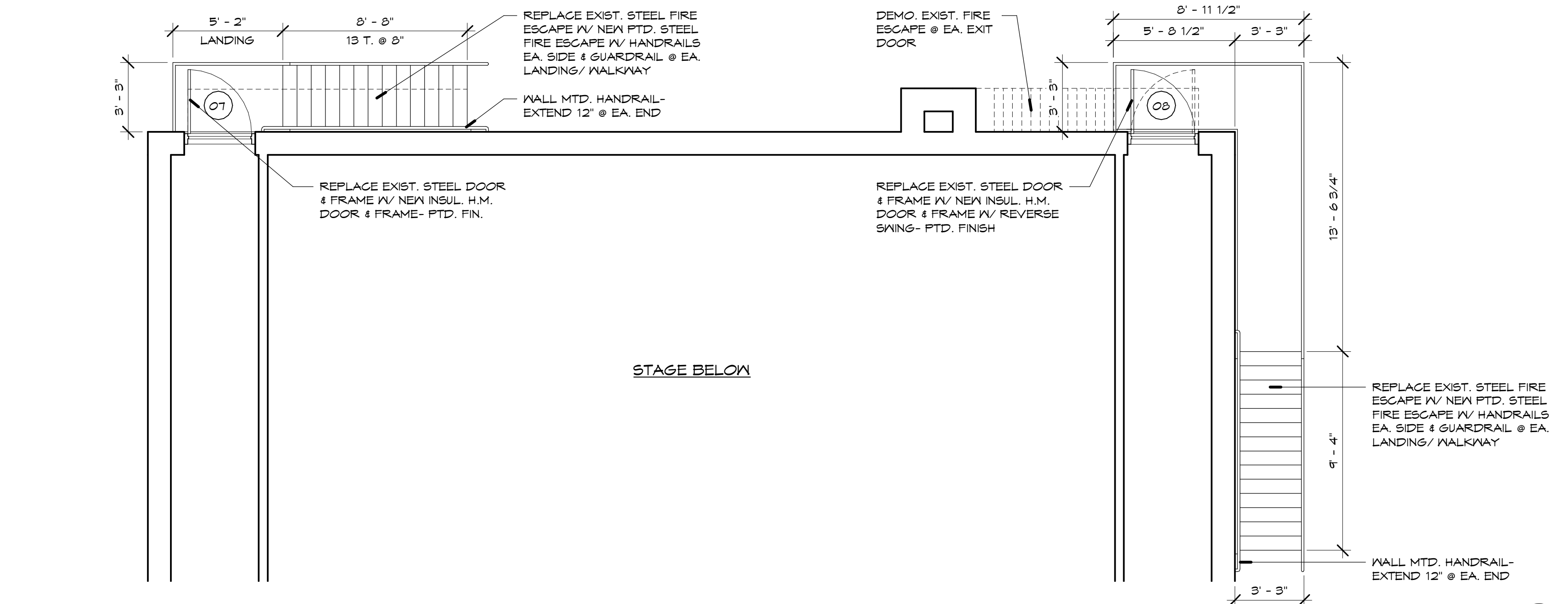
4 CANOPY ROOF PLAN
1/4" = 1'-0"



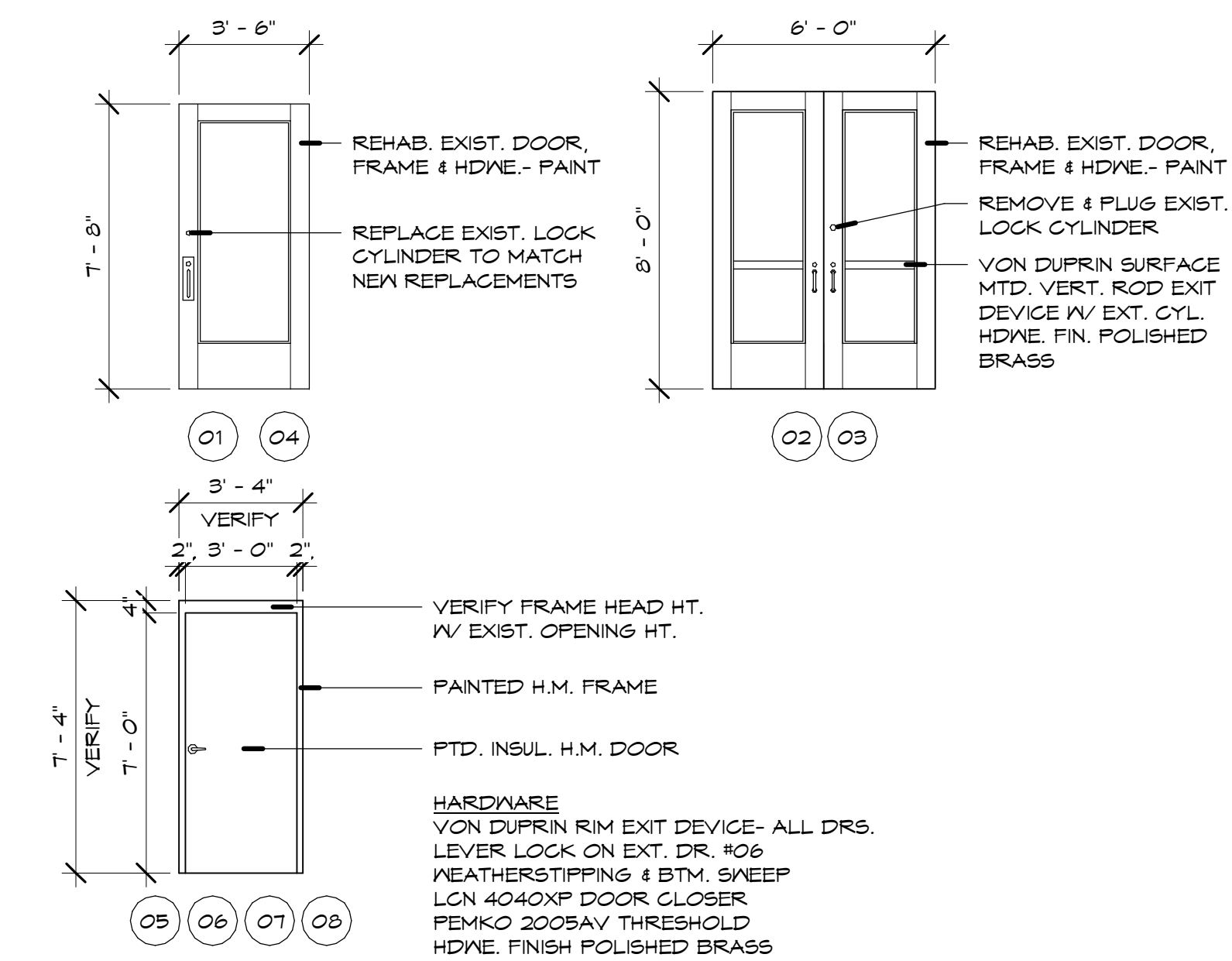
2 PARTIAL STAGE FLOOR PLAN
1/4" = 1'-0"



5 BOLLARD DETAIL
3/4" = 1'-0"

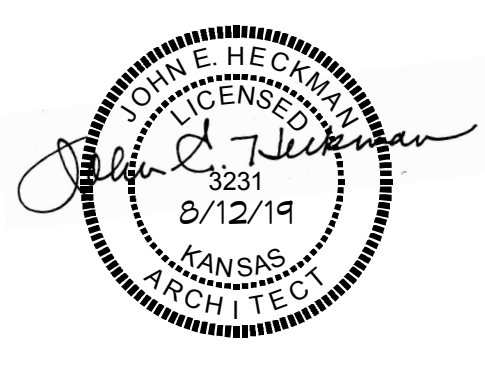


3 PARTIAL BALCONY PLAN
1/4" = 1'-0"



6 DOORS TYPES
1/4" = 1'-0"

NOTE: THIS PROJECT IS PARTIALLY SUPPORTED BY THE HERITAGE TRUST FUND GRANT PROGRAM FROM THE KANSAS STATE HISTORICAL SOCIETY



Architect
Heckman & Associates, P.A.
107 1/2 N. Penn. Ave.
P.O. Box 1314
Independence, KS 67301
Phone: (620) 331-6171
Fax: (620) 331-6172
E-mail: sclapp_heckman@sbcglobal.net
jheckman_heckman@sbcglobal.net

COPYRIGHT NOTE:
Copyright Heckman & Assoc. P.A. 2019
Federal Copyright law prohibits any duplication of this document in part or in whole without express written consent from Heckman & Associates, P.A. - 2019

REVISIONS

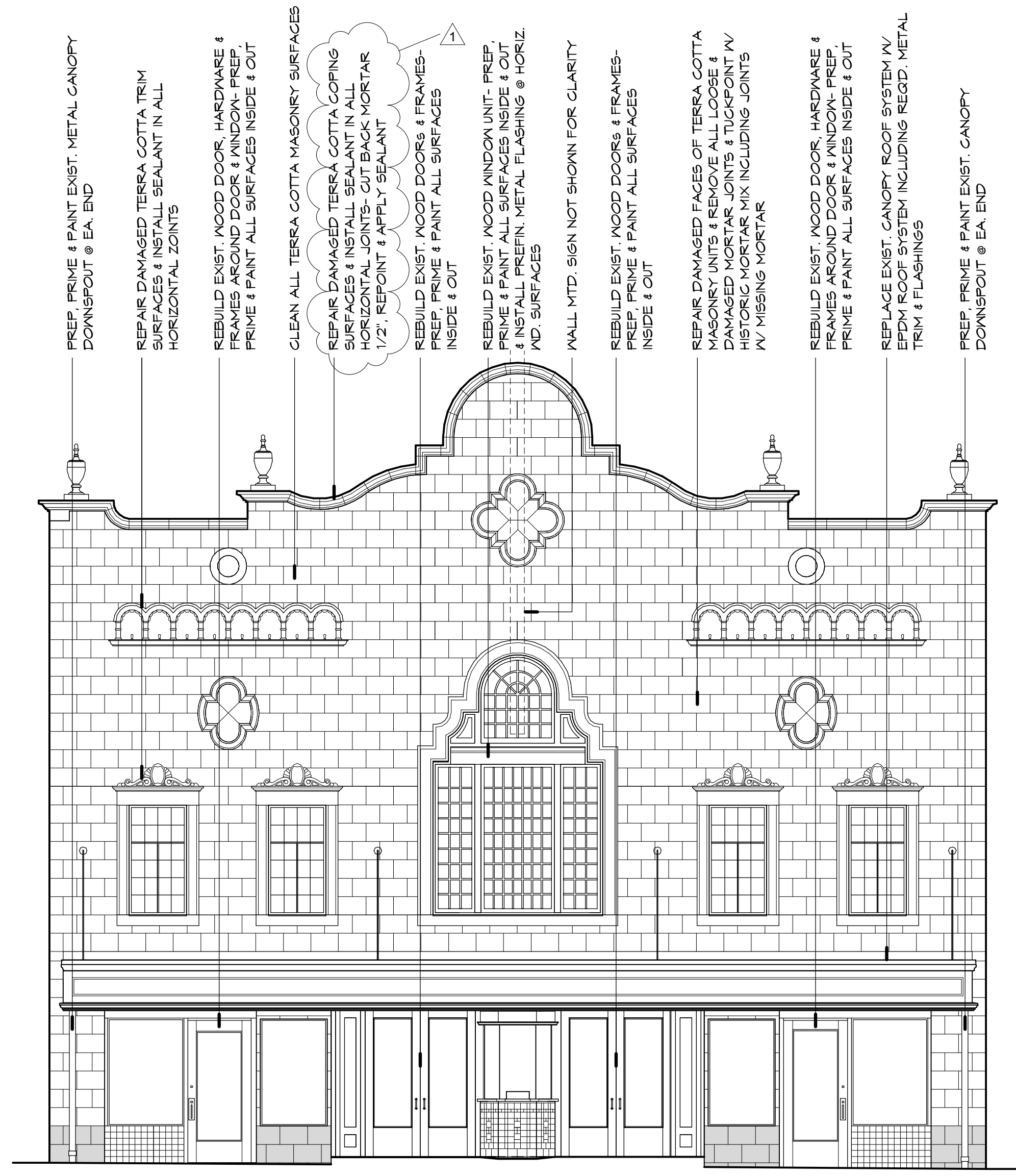
No.	Description	Date

MIDLAND THEATER FOUNDATION
MIDLAND THEATER EXTERIOR REHABILITATION-HTF GRANT #2019-07

PARTIAL FLOOR PLANS & MARQUEE ROOF PLAN

Project number	H&A1928
Date	8/12/19
Drawn by	JEH
Checked by	JEH
Sheet	A-1
Scale	As indicated

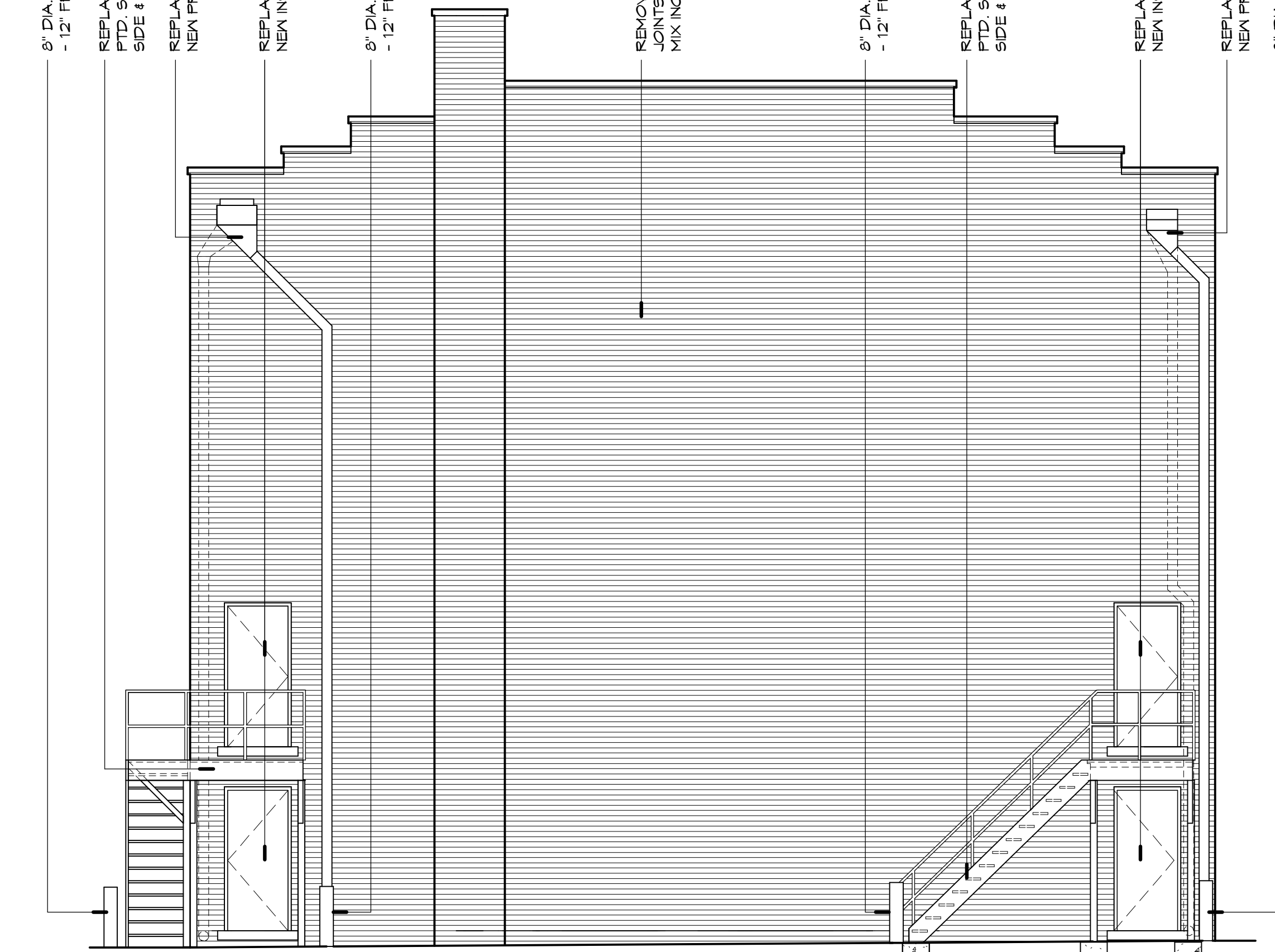
9/16/2019 11:01:28 AM



1 SOUTH ELEVATION

3/16" = 1'-0"

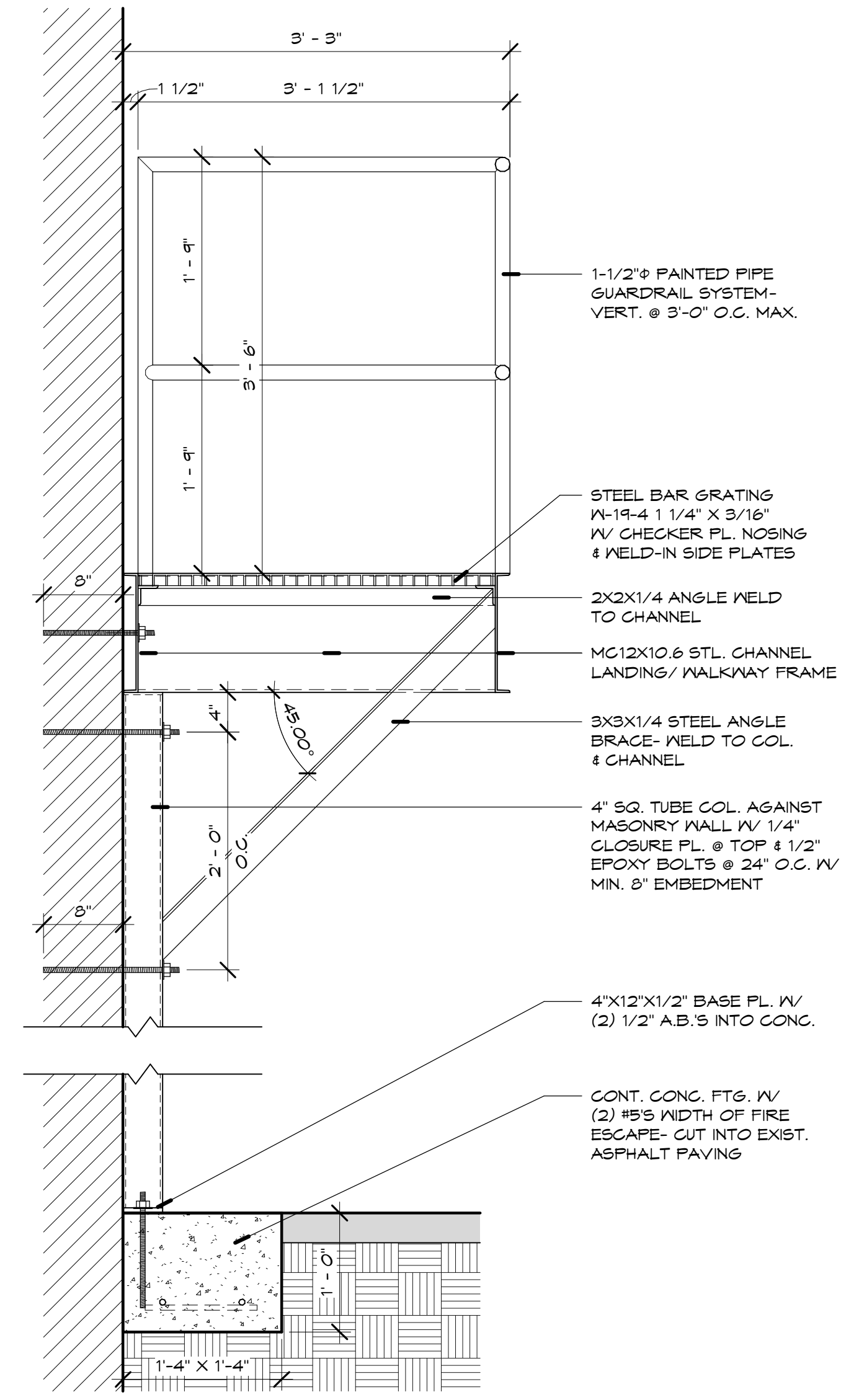
- PREP PRIME & PAINT EXIST. METAL CANOPY DOWNSPOUT @ EA. END
- REPAIR DAMAGED TERRA COTTA TRIM SURFACES & INSTALL SEALANT IN ALL HORIZONTAL JOINTS
- REBUILD EXIST. WOOD DOOR, HARDWARE & FRAMES AROUND DOOR & WINDOW- PREP, PRIME & PAINT ALL SURFACES INSIDE & OUT
- CLEAN ALL TERRA COTTA MASONRY SURFACES
- REPAIR DAMAGED TERRA COTTA COPING SURFACES & INSTALL SEALANT IN ALL HORIZONTAL JOINTS- CUT BACK MORTAR 1/2", REPOINT & APPLY SEALANT
- REBUILD EXIST. WOOD DOORS & FRAMES- PREP, PRIME & PAINT ALL SURFACES INSIDE & OUT
- REBUILD EXIST. WOOD WINDOW UNIT- PREP, PRIME & PAINT ALL SURFACES INSIDE & OUT, & NEW PREFIN. METAL FLASHING @ HORIZ. WD. SURFACES
- WALL MTD. SIGN NOT SHOWN FOR CLARITY
- REBUILD EXIST. WOOD DOORS & FRAMES- PREP, PRIME & PAINT ALL SURFACES INSIDE & OUT
- REPAIR DAMAGED FACES OF TERRA COTTA MASONRY UNITS & REMOVE ALL LOOSE & DAMAGED MORTAR JOINTS & TUCKPOINT W/ HISTORIC MORTAR MIX INCLUDING JOINTS W/ MISSING MORTAR
- REBUILD EXIST. WOOD DOOR, HARDWARE & FRAMES AROUND DOOR & WINDOW- PREP, PRIME & PAINT ALL SURFACES INSIDE & OUT
- REPLACE EXIST. CANOPY ROOF SYSTEM W/ EPDM ROOF SYSTEM INCLUDING REGD. METAL TRIM & FLASHINGS
- PREP PRIME & PAINT EXIST. CANOPY DOWNSPOUT @ EA. END



2 NORTH ELEVATION

3/16" = 1'-0"

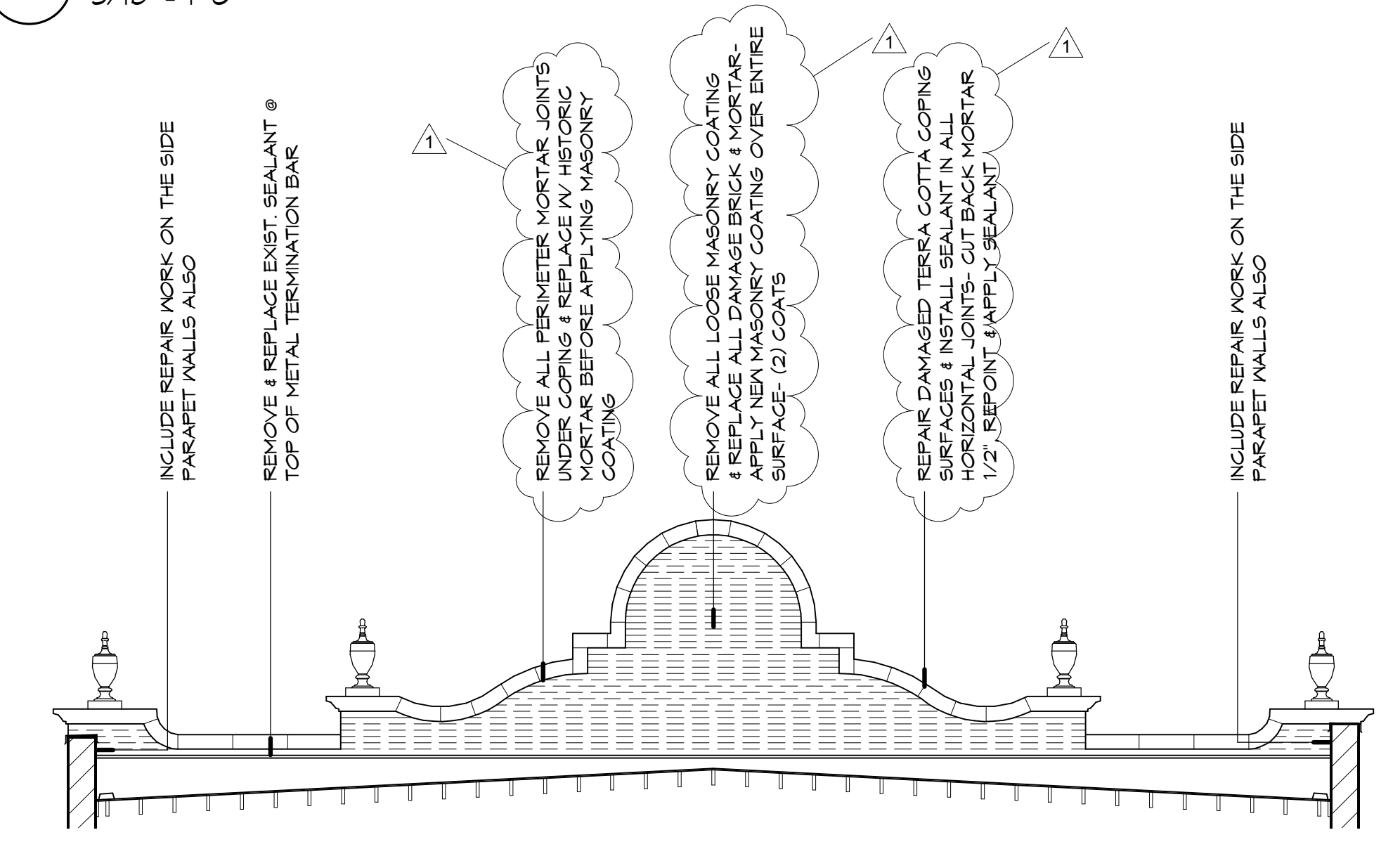
- 8" DIA. CONG. FILLED STEEL BOLLARD TYP. - 12" FROM CORNER OF FIRE ESCAPES
- REPLACE EXIST. STEEL FIRE ESCAPE W/ NEW PTD. STEEL FIRE ESCAPE W/ HANDRAILS EA. SIDE & GUARDRAIL @ EA. LANDING/WALKWAY
- REPLACE EXIST. SCUPPER, 1 DOWNSPOT W/ NEW PREFIN. SCUPPER & DOWNSPOUT
- REPLACE EXIST. STEEL DOOR & FRAME W/ NEW INSUL. H.M. DOOR & FRAME- PTD. FIN.
- 8" DIA. CONG. FILLED STEEL BOLLARD TYP. - 12" FROM CORNER OF FIRE ESCAPES
- REMOVE ALL LOOSE & DAMAGED MORTAR JOINTS & TUCKPOINT W/ HISTORIC MORTAR MIX INCLUDING JOINTS W/ MISSING MORTAR
- 8" DIA. CONG. FILLED STEEL BOLLARD TYP. - 12" FROM CORNER OF FIRE ESCAPES
- REPLACE EXIST. STEEL FIRE ESCAPE W/ NEW PTD. STEEL FIRE ESCAPE W/ HANDRAILS EA. SIDE & GUARDRAIL @ EA. LANDING/WALKWAY
- REPLACE EXIST. STEEL DOOR & FRAME W/ NEW INSUL. H.M. DOOR & FRAME- PTD. FIN.
- REPLACE EXIST. SCUPPER & DOWNSPOUT W/ NEW PREFIN. SCUPPER & DOWNSPOUT
- 8" DIA. CONG. FILLED STEEL BOLLARD TYP. - 12" FROM CORNER OF FIRE ESCAPES



3 FIRE ESCAPE LANDING/ WALKWAY

1" = 1'-0"

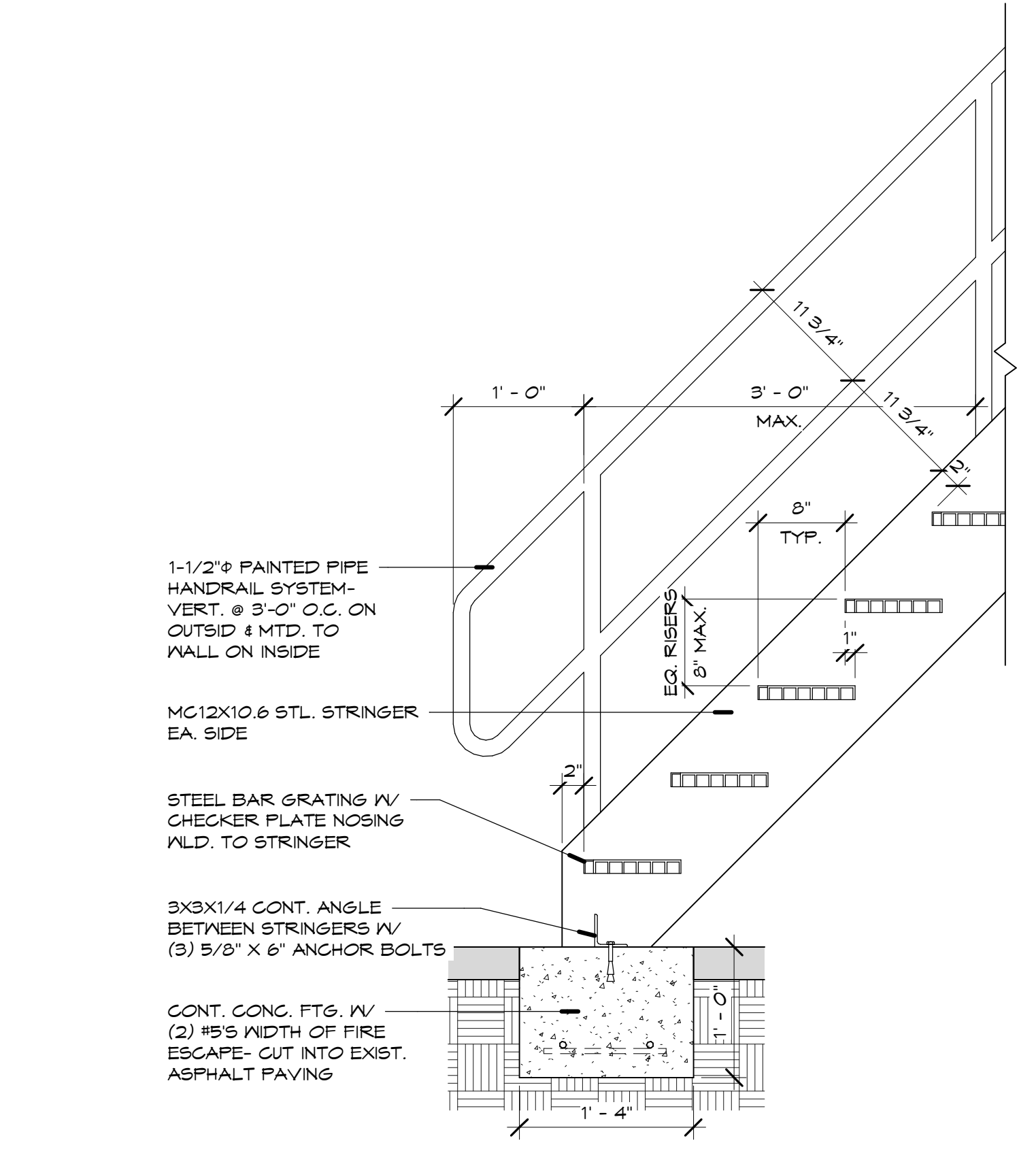
- 1-1/2" Ø PAINTED PIPE GUARDRAIL SYSTEM- VERT. @ 3'-0" O.C. MAX.
- STEEL BAR GRATING W-19-4 1 1/4" X 3/16" W/ CHECKER PL. NOSING & WELD-IN SIDE PLATES
- 2X2X1/4 ANGLE WELD TO CHANNEL
- MC12X10.6 STL. CHANNEL LANDING/ WALKWAY FRAME
- 3X3X1/4 STEEL ANGLE BRACE- WELD TO COL. & CHANNEL
- 4" SQ. TUBE COL. AGAINST MASONRY WALL W/ 1/4" CLOSURE PL. @ TOP & 1/2" EPOXY BOLTS @ 24" O.C. W/ MIN. 8" EMBEDMENT
- 4"X12"X1/2" BASE PL. W/ (2) 1/2" A.B.'S INTO CONG.
- CONT. CONG. FTG. W/ (2) #5'S WIDTH OF FIRE ESCAPE- CUT INTO EXIST. ASPHALT PAVING



4 PARAPET ELEVATION

3/16" = 1'-0"

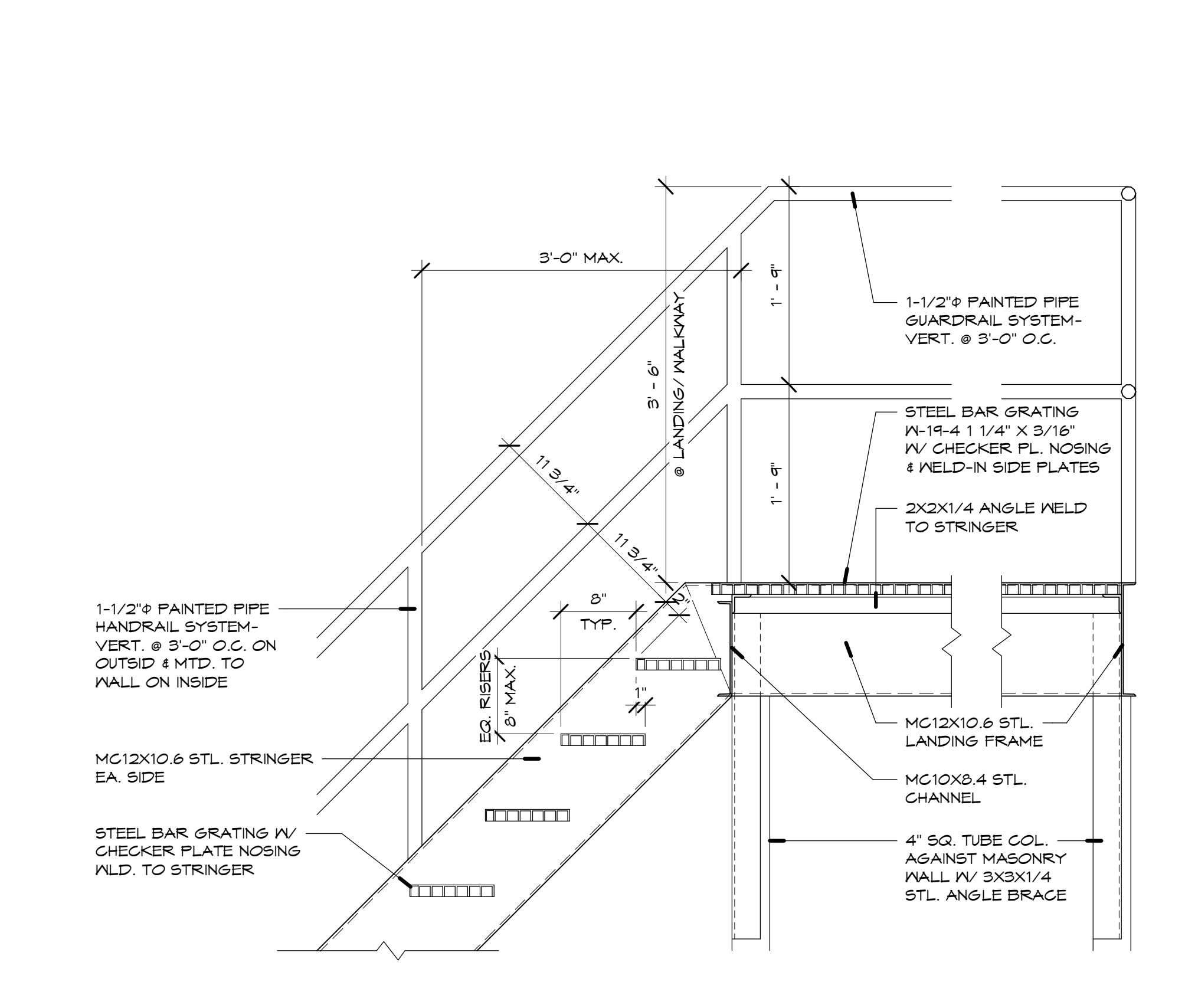
- INCLUDE REPAIR WORK ON THE SIDE PARAPET WALLS ALSO
- REMOVE & REPLACE EXIST. SEALANT @ TOP OF METAL TERMINATION BAR
- REMOVE ALL PERIMETER MORTAR JOINTS FROM PARAPET WALLS & MORTAR MORTARS BEFORE APPLYING MASONRY COATING
- REMOVE ALL LOOSE MASONRY COATING & REPLACE ALL DAMAGE BRICK & MORTAR- APPLY NEW MASONRY COATING OVER ENTIRE SURFACE- (2) COATS
- REPAIR DAMAGED TERRA COTTA COPING SURFACES & INSTALL SEALANT IN ALL HORIZONTAL JOINTS- CUT BACK MORTAR 1/2", REPOINT & APPLY SEALANT.
- INCLUDE REPAIR WORK ON THE SIDE PARAPET WALLS ALSO



5 FIRE ESCAPE DETAIL @ BOTTOM

1" = 1'-0"

- 1-1/2" Ø PAINTED PIPE HANDRAIL SYSTEM- VERT. @ 3'-0" O.C. ON OUTSID & MTD. TO WALL ON INSIDE
- MC12X10.6 STL. STRINGER EA. SIDE
- STEEL BAR GRATING W/ CHECKER PLATE NOSING WLD. TO STRINGER
- 3X3X1/4 CONT. ANGLE BETWEEN STRINGERS W/ (3) 5/8" X 6" ANCHOR BOLTS
- CONT. CONG. FTG. W/ (2) #5'S WIDTH OF FIRE ESCAPE- CUT INTO EXIST. ASPHALT PAVING

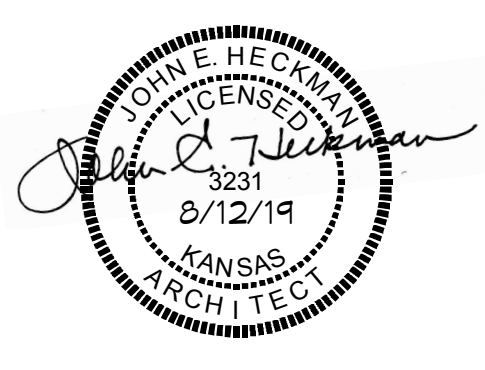


6 FIRE ESCAPE DETAIL @ TOP

1" = 1'-0"

- 1-1/2" Ø PAINTED PIPE HANDRAIL SYSTEM- VERT. @ 3'-0" O.C. ON OUTSID & MTD. TO WALL ON INSIDE
- MC12X10.6 STL. STRINGER EA. SIDE
- STEEL BAR GRATING W/ CHECKER PLATE NOSING WLD. TO STRINGER
- 1-1/2" Ø PAINTED PIPE GUARDRAIL SYSTEM- VERT. @ 3'-0" O.C.
- STEEL BAR GRATING W-19-4 1 1/4" X 3/16" W/ CHECKER PL. NOSING & WELD-IN SIDE PLATES
- 2X2X1/4 ANGLE WELD TO STRINGER
- MC12X10.6 STL. LANDING FRAME
- MC10X8.4 STL. CHANNEL
- 4" SQ. TUBE COL. AGAINST MASONRY WALL W/ 3X3X1/4 STL. ANGLE BRACE

NOTE: THIS PROJECT IS PARTIALLY SUPPORTED BY THE HERITAGE TRUST FUND GRANT PROGRAM FROM THE KANSAS STATE HISTORICAL SOCIETY



Architect
 Heckman & Associates, P.A.
 107 1/2 N. Penn. Ave.
 P.O. Box 1314
 Independence, KS 67301
 Phone: (620) 331-6174
 Fax: (620) 331-6172
 E-mail: sclapp_heckman@sbcglobal.net
 heckman_heckman@sbcglobal.net

COPYRIGHT NOTE:
 Copyright Heckman & Assoc. P.A. 2019
 Federal Copyright law prohibits any duplication of this document in part or in whole without express written consent from Heckman & Associates, P.A. - 2019

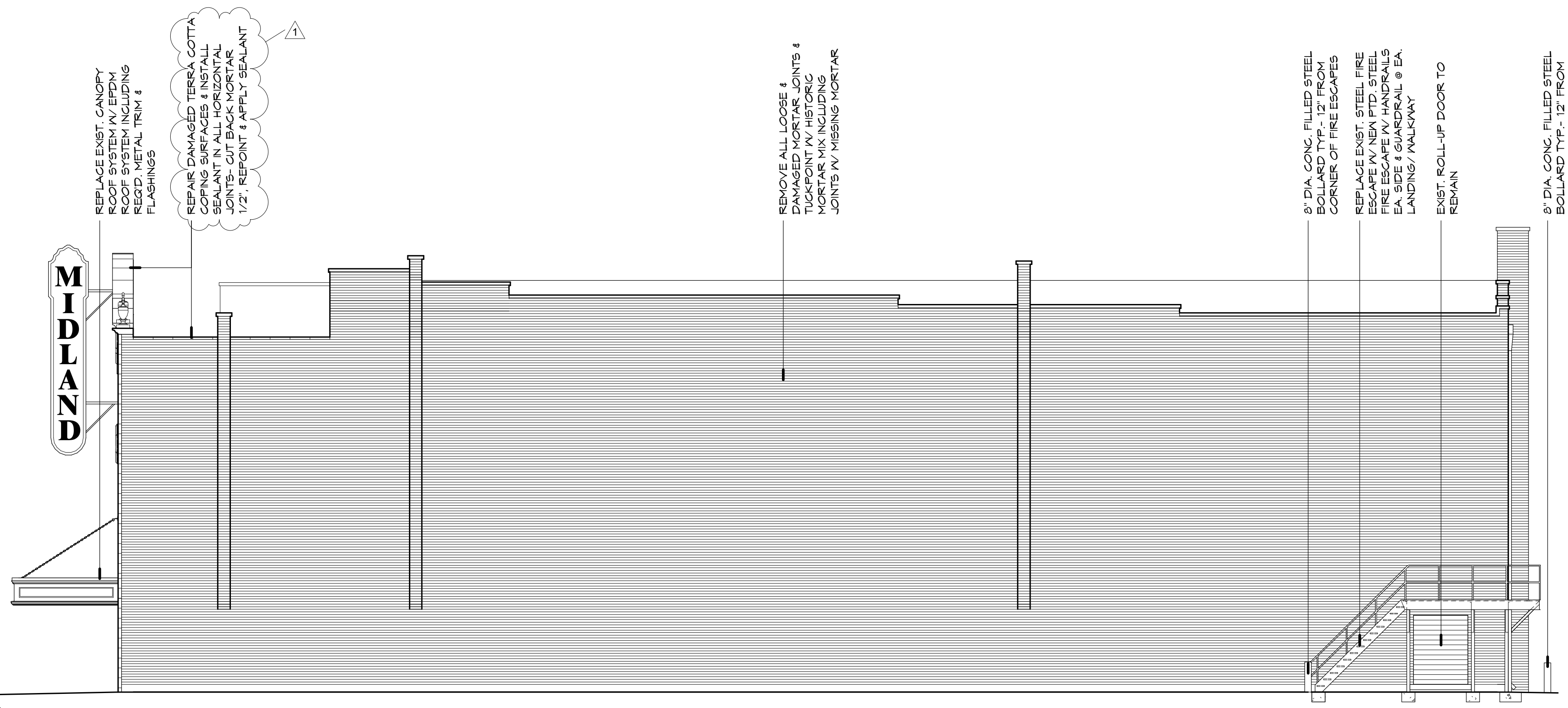
No.	Description	Date
1	NOTE REVISION	9/16/19

MIDLAND THEATER FOUNDATION
MIDLAND THEATER EXTERIOR REHABILITATION-HTF GRANT #2019-07

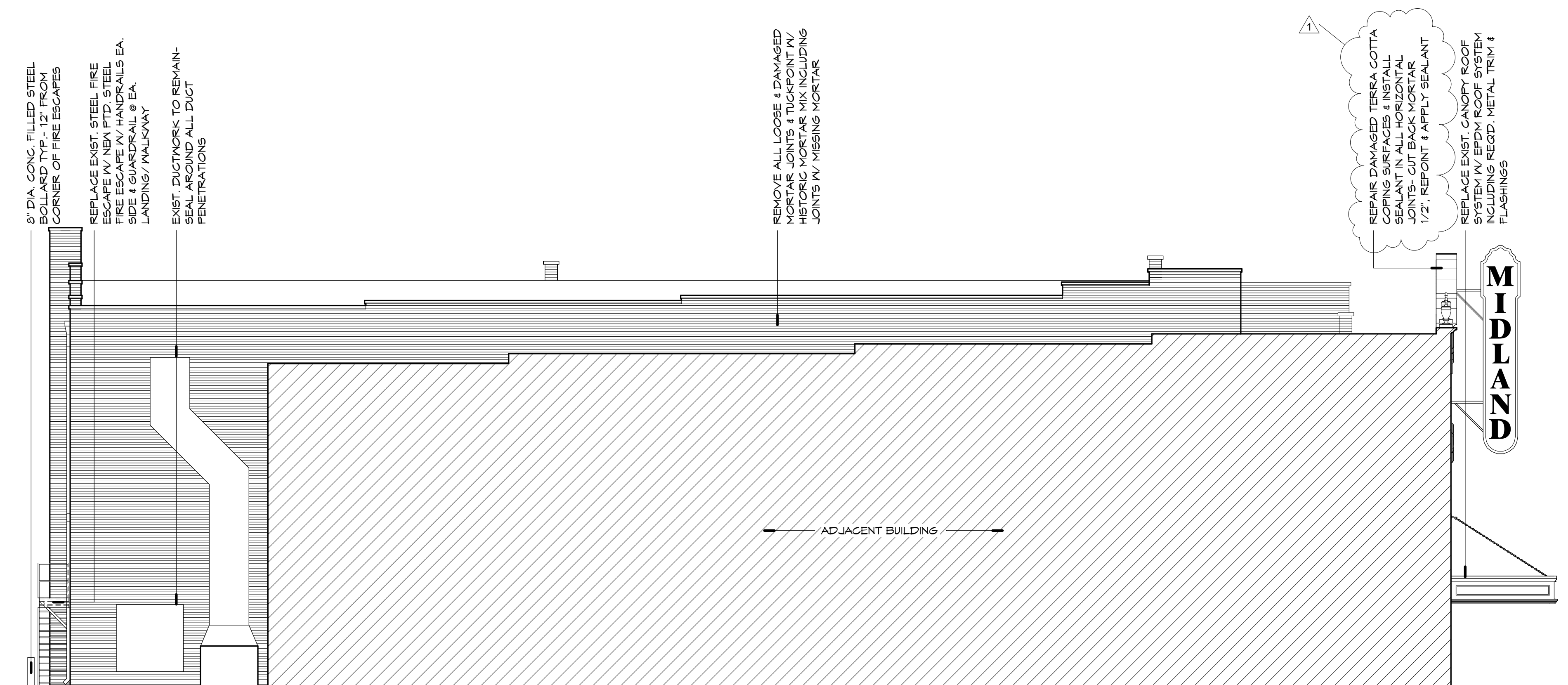
EXTERIOR ELEVATIONS

Project number	H&A1928
Date	8/12/19
Drawn by	JEH
Checked by	JEH
Sheet	A-2
Scale	As indicated

9/16/2019 11:01:30 AM



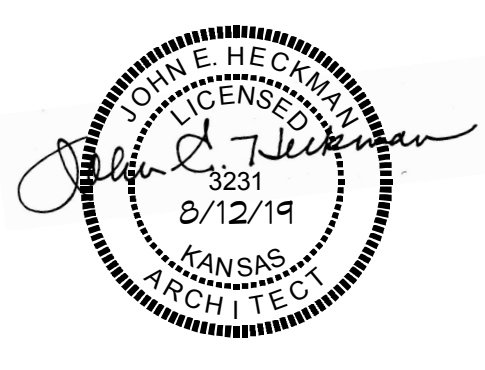
1 EAST ELEVATION
1/8" = 1'-0"



2 WEST ELEVATION
1/8" = 1'-0"



HECKMAN &
ASSOCIATES, P.A.
ARCHITECTS



Architect
Heckman & Associates, P.A.
107 1/2 N. Penn. Ave.
P.O. Box 3314
Independence, KS 67301
Phone: (620) 331-6171
Fax: (620) 331-6172
E-mail: sclapp_heckman@sbcglobal.net
jheckman_heckman@sbcglobal.net

COPYRIGHT NOTE:
Copyright Heckman & Assoc. P.A. 2019
Federal Copyright law prohibits any
duplication of this document in part or
in whole without express written consent
from Heckman & Associates, P.A. - 2019

No.	Description	Date
1	NOTE REVISION	9/16/19

MIDLAND THEATER
FOUNDATION
MIDLAND THEATER
EXTERIOR
REHABILITATION-HTF
GRANT #2019-07

EXTERIOR ELEVATIONS

Project number H&A1928
Date 8/12/19
Drawn by JEH
Checked by JEH

Sheet **A-3**
Scale 1/8" = 1'-0"

NOTE: THIS PROJECT IS PARTIALLY SUPPORTED BY THE HERITAGE TRUST FUND GRANT PROGRAM FROM THE KANSAS STATE HISTORICAL SOCIETY

