

**Mouse Anti-Bcl-10 [SPM520]: MC0612**

**Intended Use:** For Research Use Only

**Description:** Bcl-10, with an N-terminal caspase recruitment domain (CARD), is found in a number of apoptotic regulatory molecules. It was identified through its direct involvement in t(1;14) of mucosa-associated lymphoid tissue (MALT) lymphoma. Expression of BCL10 was shown to induce NFKB activation in a NIK-dependent pathway. This antibody labels subpopulations of normal B and T cells and is a useful tool for the sub-classification of lymphomas. In MALT lymphomas with the t(1;14) translocation, while 55% of MALT lymphomas lacking this translocation exhibited the same labeling pattern, although at a much lower level.

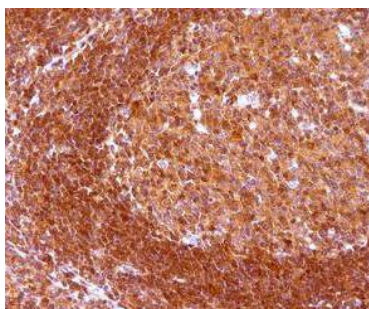
**Specifications:**

Clone: SPM520  
Source: Mouse  
Isotype: IgG1k  
Reactivity: Human  
Localization: Cytoplasm, nucleus  
Formulation: Protein A/G purified antibody from bioreactor concentrate. Prepared in 10mM PBS with 0.2% BSA and < 0.09% sodium azide (NaN3).  
Storage: Store at 2°- 8°C. For longer periods of storage, store at -20°C. Avoid repeat freeze-thaw cycles  
Applications: IHC, Flow Cyt., IF, WB  
Package:

Description	Catalog No.	Size
Bcl-10 Concentrated	MC0612	1 ml

**IHC Procedure\*:**

Positive Control Tissue: WEHI-231, Ramos cells, lymphoma.  
Concentrated Dilution: 50-200  
Pretreatment: Citrate pH6.0, 15 minutes using Pressure Cooker, or 30-60 minutes using water bath at 95°-99°C  
Incubation Time and Temp: 30-60 minutes @ RT  
Detection: Refer to the detection system manual  
\* Result should be confirmed by an established diagnostic procedure.



FFPE human tonsil stained with anti-Bcl-10 using DAB