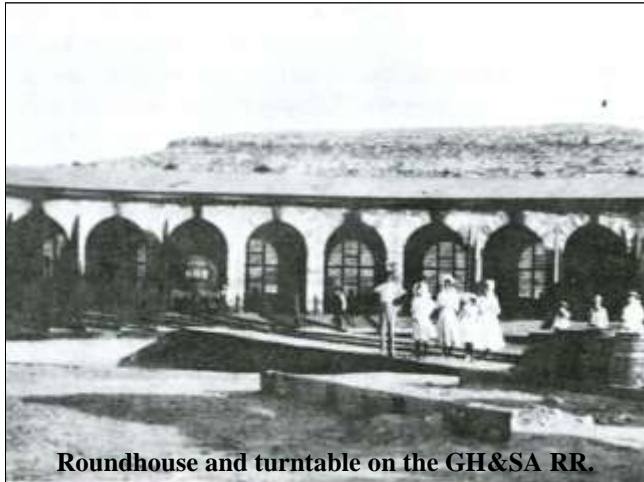




Shearing crew moving to the next ranch.



Cowboys punching cows.



Roundhouse and turntable on the GH&SA RR.



Yard switcher and crew..



Passenger engine and yard crew..



Carknocker doing maintenance on rail cars.

Terrell County



Terrell County Museum

Corner of 2nd and Mansfield Streets

PO Box 7

Sanderson TX 79848

432-244-9289

www.terrellmuseum.info

Open daily, Monday through Thursday, 8 am to 12 pm and 1 pm to 5 pm.

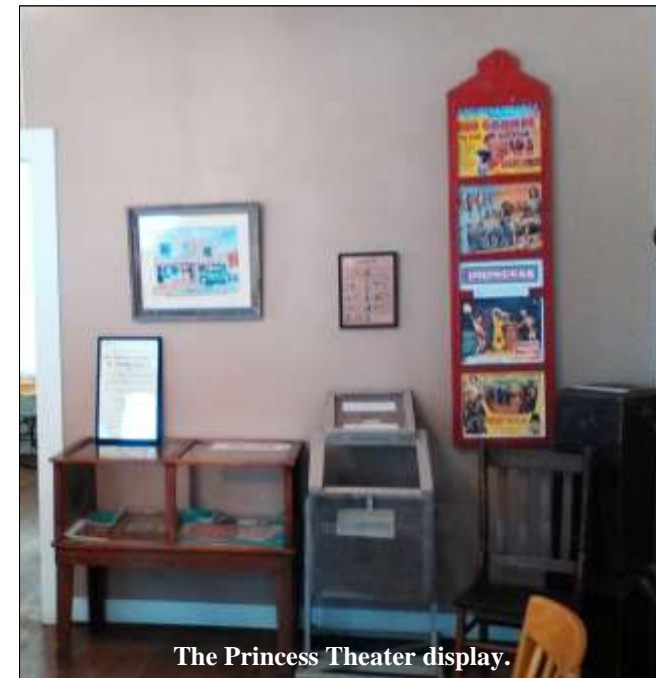
Fridays and Saturdays by appointment.



Chuckbox display with utensils.



The depot office, with original furnishings.



The Princess Theater display.

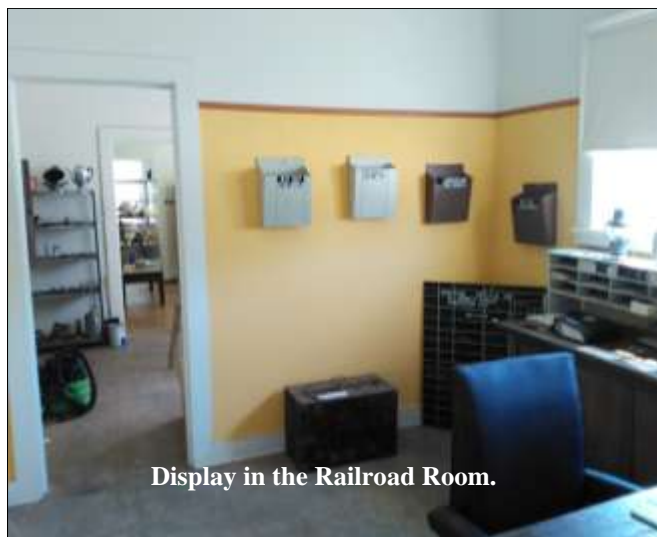


Ranching artifacts in the Ranch Room.

The Terrell County Memorial Museum is a collection of objects and ephemera indicative of the colorful history of our county. The families of Terrell County have donated items of great historical and sentimental value to the museum, and we are the caretakers and interpreters of that proud heritage. Walking through the Museum with your guide is like taking a walk through history...from the lawless days of the beginning in 1882 when the railroad arrived, the formation of the county and the coming of law enforcement in 1905, the boom years of the '30s, '40s and '50s, the heartbreak and tragedy of the 1965 flood, the turbulent years when the railroad and the ranching industry hit on hard times, to our efforts to rebound and rebuild...all of the story is there, told through tasteful displays and meaningful commentary. Come join us to enjoy the history of Terrell County.



Depot clock in the Railroad Room.



Display in the Railroad Room.



Sheep shearing display in the Ranch Room.