

ASSESSOR'S MAP

SHOWING ZONING DISTRICTS

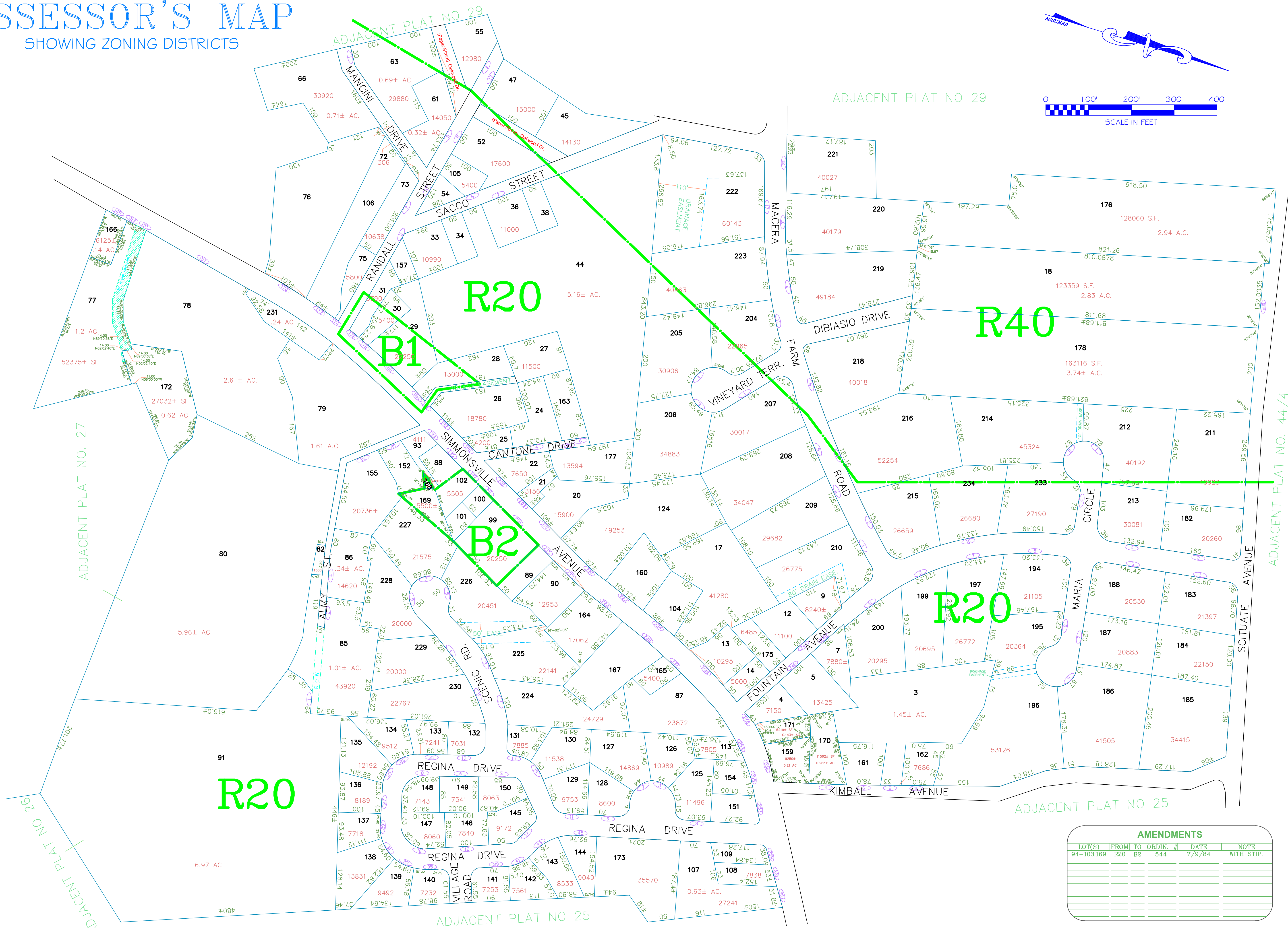
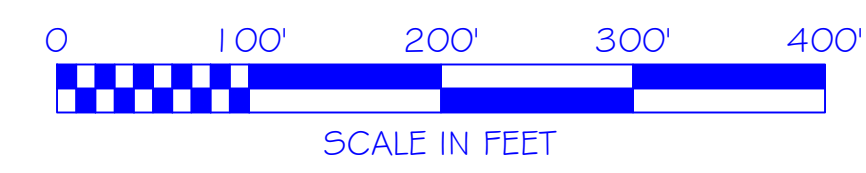
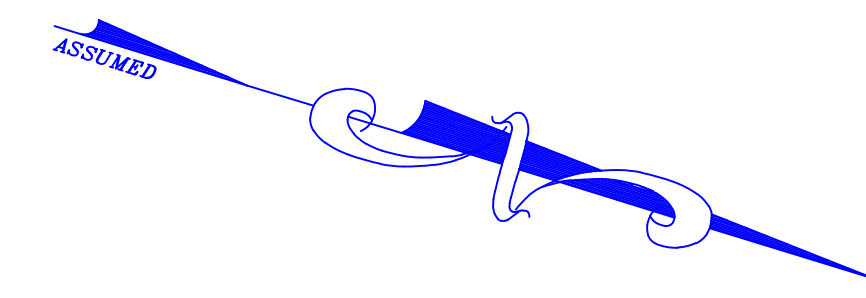
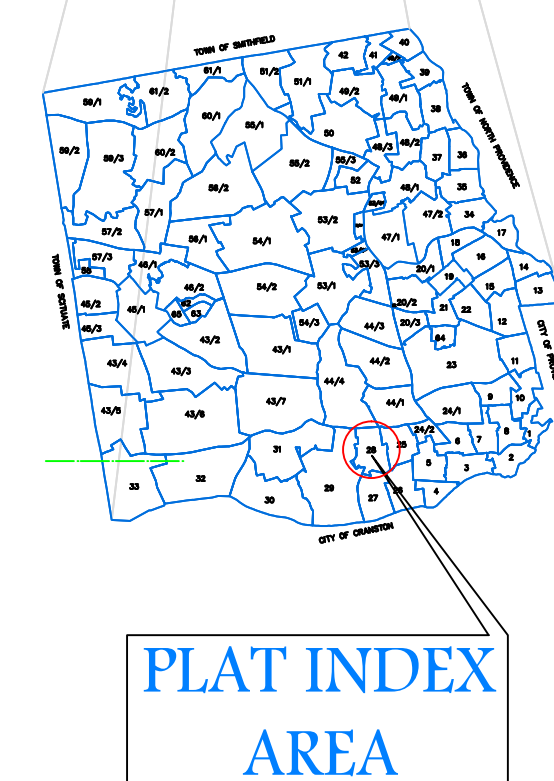
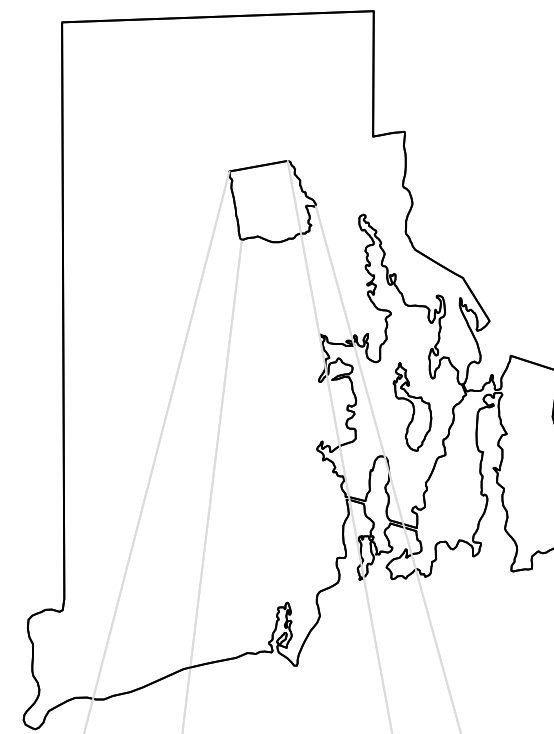
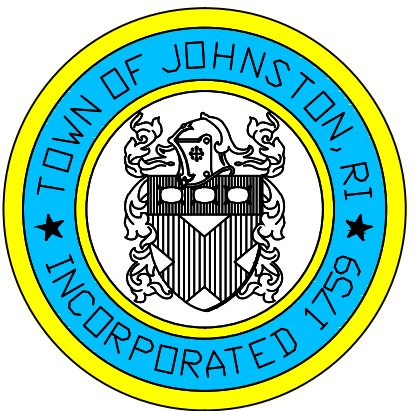
Assessor's Plat Number

28

STATE OF RHODE ISLAND
TOWN OF JOHNSTON

PROVIDENCE COUNTY
INCORPORATED 1759

ASSESSOR'S OFFICE
1385 HARTFORD AVENUE
JOHNSTON, RHODE ISLAND
02919



AMENDMENTS					
LOT(S)	FROM	TO	ORDIN. #	DATE	NOTE
94-103.169	R20	B2	544	7/9/84	WITH STIP.

Scale: 1:100
 Revised By: Benjamin Ng
 Last updated: January 04, 2016
 Date printed: January 04, 2016

For copies of plat maps, please go to the DPW at 100 Irons Avenue Johnston Rhode Island. Thank you.

NOTE: This map was prepared for the use of the Town of Johnston for assessment and illustrative purposes only. It does not represent a survey of the premises. No liability is assumed as to the sufficiency or accuracy of the data delineated hereon.