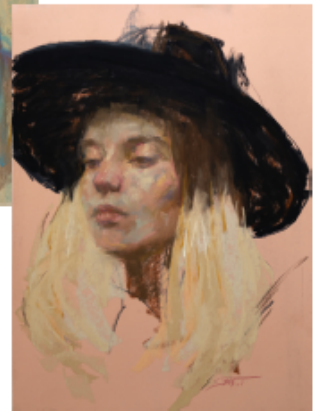
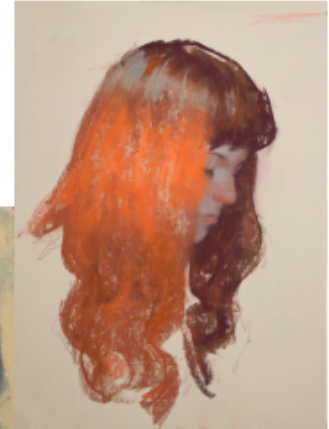
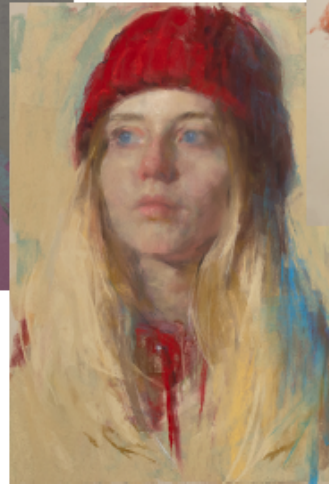
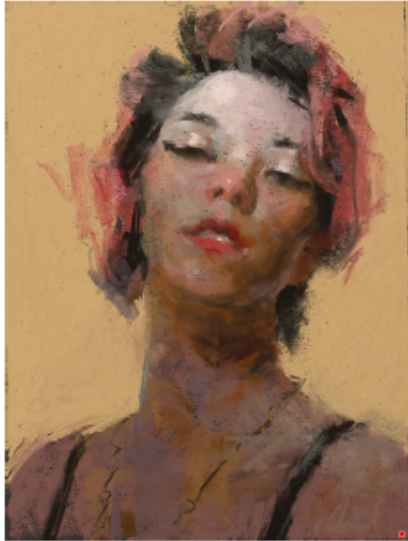




The Ohio Pastel Artists League presents . . .

The Portrait Sketch with Corey Pitkin (PSA, IAPS/EP)

Saturday, March 22, 2025 • 10:00 am to 4:00 pm
at CoHatch / Upper Arlington, 1733 W Lane Ave, Columbus, OH



The Portrait Sketch

It is likely that the first thing you ever drew was a portrait. When you first put crayon to paper, you were compelled to recreate the people in your life. Yet as we grow and our visual standards become more discerning, many of us give up creating portraits, feeling that they are too complicated. In this online workshop, Corey will guide students through his technique of quickly capturing a portrait in pastel by starting with perceived abstract shapes and building on this with a rational approach that includes addressing form, value, color, anatomy, and emotion. Special attention will be given to edge work and color harmonies. Students will paint along with Corey as he describes his process and the workshop will end with a group critique.

www.coreypitkin.com/

Workshop Notes: In an effort to offer an affordable workshop to our members the OPAL Board will have Corey Pitkin join us live via Zoom.

We will have a lunch break, TBD day of workshop.

Space is limited to **15 Artists** to allow for our group discussion at the end of the day.

Cost - Members: \$75.00

Non-Members: \$100.00

Registration Form and Supply List on the back side.

Questions: pertain@bucklandgillespie.com

All artwork copyrighted Corey Pitkin.

The Ohio Pastel Artists League presents . . .

The Portrait Sketch with Corey Pitkin (PSA, IAPS/EP)

Saturday, March 22, 2025



Corey Pitkin's work is an exploration of ephemeral beauty expressed simply and genuinely. Using old master-esque muted colors complimented with subtle edge work his pieces shift and glimmer yet maintain their precision. His subjects are memories that slip away when you try to hold onto them for more than a moment.

He is a Signature Member of the Pastel Society of America where he also serves on the Board of Governors and has achieved Eminent Pastelist status with the International Association of Pastel Societies. He currently resides in upstate New York with his wife Esther and children Anastasia and Xavier.

For more information about Pitkin visit:

www.coreypitkin.com/

Corey's Workshop Supply List

- Soft pastels, preferably in the Earth Tone range. My favorite for portraiture is the Terry Ludwig Umber Shadows and Shades.
 - Some other good sets are:
 - Unison Natural Earth (NE)
 - Unison Brown Earth (BE)
 - Richeson Handrolled Soft Pastels Earth Browns
- Several dark warm pastels, individual sticks or full sets from
 - Unison's Dark Colors set of 8
 - Townsend's Intense Dark set of 12
 - Sennelier's Dark Tones set of 24
- Willow charcoal (I recommend Coates)
- 3-5 assorted pastel pencils in earth tones (Caran d'Ache & Faber-Castell have a good selection)
- Charcoal pencils, soft & hard (Generals are good)
- 1 piece of sanded pastel paper, 11x14"-ish, student's preference of manufacturer, preferably a medium to dark value color. I'll be using Pastelmat.
- A drawing board and clips or tape
- A kneaded eraser
- Pencil sharpener or utility knife
- An iPad or other tablet to display the reference image (*optional - I recommend students use an iPad or other tablet to display the photo if they have one - they will see better color and have the ability to zoom in.*)
- Reference photo will be emailed to all paid registered artists one week before the workshop.

- REGISTRATION FORM -

Fee: ___ \$75.00 ___ Non-member fee \$100.00

Make checks payable to: Ohio Pastel Artists League

Send payment and completed registration form by March 3, 2025 to:

- Pertain Gillespie Buckland, 3444 Hidden Cove Circle, Lewis Center, OH 43035

Name _____ Cell Phone _____

Street _____

City _____ State _____ Zip _____ Email _____

Amount Enclosed \$ _____

