

BEEF SOLUTIONS
BULL SALE
Fall Round Up
IONE, CA
BRO

CELEBRATING A
proud heritage
OF RANCHING IN THE FOOTHILLS

9/22/2022 • Ione, CA • 1 p.m.
90 SimAngus Bulls • 60 Angus Bulls

COMMERCIAL-FOCUSED

THEN, NOW *and* Tomorrow



Circle Ranch
SimAngus™ Seedstock

BR Bruin Ranch
Angus Seedstock

A lesson in history helps to understand where we have come from, but also gives us the opportunity to reflect on change. History provides context. **The Curran and Fischer families have been ranching in Amador and Calaveras Counties for over 150 years.** Our roots as commercial cattlemen keep us grounded in the type and kind of cattle we produce and operations we run. Taking care of our resources, working hard and harvesting as many pounds of high quality product have always been the core principles of success in Agriculture. Our strong connection to this region and our foothill communities have honed our focus on the type of cow required to excel at this task.

- Produce the most pounds our environment will support
- Optimize our total cowherd performance through consistency
- Produce profitable, problem-free females that leave a lasting impact for generations
- Use EPDs and Genomics as tools to compliment, not replace, actual production and type in our genetic selection

We have a generational commitment to this lifestyle and have built cowherds that combine these goals, setting the stage for a sustainable future in this business. There is no greater testimony to longevity than the simple fact that we are still here ranching right alongside you and our children aim to continue.

While we cherish our heritage, we understand and fully accept the responsibility of producing the kind of cattle that position our customers for success in the future. After all, our cowherd today is what yours will look like tomorrow. This offering is the culmination of many years of our breeding programs and an honest commitment to the ranching families that we are humbled to call our family and friends. We sincerely thank you for the opportunity to be your seedstock supplier.





SimAngus™ Seedstock

Tim & Jill Curran

(209) 765-1815 • (209) 765-0450

1000 Cook Rd • Ione, CA 95640

www.CircleRanch.net  



1126 2nd Street

Sacramento, CA 95814

Ranch located in Auburn, CA

Joe Fischer, cow herd partner

(530) 392-0154

www.BruinRanch.com  

Cattle will be available for inspection beginning Tuesday, Sept. 20 through the conclusion of the sale.



Friends,

Thank you for your support and continued interest in our programs. While there are challenges, we all should be excited for the changes on the horizon. The cow business is about to get good!!! From the spring to early fall, we have seen both Angus and SimAngus Beef Solutions sired cattle top markets and weight classes everywhere they have been sold and we truly believe the best is yet to come.

The west and beyond is starving for a mother cow who does what seedstock producers say she will. It seems everywhere we look there is a new advertising tag line including the word "maternal." I made a comment the other day that the beef business is suffering from maternal confusion. Now there are even indexes that show "breed leaders" of "maternal" who have never had a calf. While we see some of these tools as useful, investing in a program and people seems to be more logical. We have devoted our lives to producing the kind of cattle that will work for our programs and, consequently, your program as well. Our focus on the mother cow has always been priority number one and will remain our standard into the future.

Throughout the catalog you will find older ranch type photos that have come from our family collections. Many of the photos include dear friends and family who are no longer with us, but many of the life lessons they taught us remain in us today. The Curran and Fischer Families have been ranching in this region since the 1800s, an accolade that evokes a sense of pride and responsibility to the kind of cattle we produce. We know the kind of cattle that work here because we live here, we ranch here, and we raise our families here.

We hope you enjoy the photos and the offering; please join us for our pre-sale casual dinner at 5pm on Wednesday, September 21 at the sale facility. We look forward to seeing you at the Circle Ranch for the auction on Thursday, September 22 where a prime rib lunch and refreshments will be provided throughout the day. Please contact Tim or Joe with any questions or regarding room accommodations for out of town visitors.

*Win a
**FREE
Bull!***

See page 34 for details!





September 22, 2022 • 1 p.m.

BID IN CONFIDENCE

All sight unseen purchases guaranteed.

SIMANGUS™ BULLS: Lots 1-84

ANGUS BULLS: Lots 90-151

Hotel Accommodations:

Comfort Inn, Galt, CA (209) 744-7800
 Holiday Inn Express, Jackson, CA..... (209) 257-1500

Sale Site: The sale will be held at Circle Ranch in Ione, CA. See map on back cover.

Herd Health: All bulls in the sale have been Anaplas vaccinated. Health protocols available from either producer detailing the timing and brand names of vaccinations and worming upon request.

Semen Testing: All bulls selling have passed a rigid semen test and fertility evaluation by an accredited technician.

Retained Semen Interest: The Beef Solutions breeders are retaining one-third semen interest on all bulls selling in the sale, unless stated otherwise. Buyer receives possession and full salvage value on the bulls.

Supplemental Information: A supplemental sheet, with complete up-to-date performance information on all bulls, is immediately available from either producer. All performance information is available sale day in hard-copy form, this sheet and any announcements from the block will take precedence over the printed material in the sale book.

Angus Genetic Information: All potential carriers for known genetic conditions: AM, NH, CA, M1 and DD have either tested free or are excluded as possible carriers by pedigree.



Bid and Buy Online: This sale will be broadcast through Superior Production's Click-To-Bid internet service. For details about how to participate, turn to page 35.

Catalog designed by **Strommen Livestock Services**
 Solen, N.D. • (701) 290-3886

Sale Day Phones

Tim Curran..... (209) 765-1815
Joe Fischer (530) 392-0154

Auctioneers:

Rick Machado..... (805) 474-9422 (805) 501-3210

Livestock Representatives:

Logan Ipsen, *Western Livestock Journal*..... (916) 947-2392
 Jared Patterson, *Western Livestock Journal*..... (208) 312-2386
 Marty Ropp, *Allied Genetic Resources* (406) 581-7835
 Jake Parnell, *Cattlemens Livestock Market* (916) 662-1298
 Matt Macfarlane, *California Cattleman Magazine*..... (916) 803-3113
 Chip Kemp, *American Simmental Association*..... (573) 239-0524
 John Rodgers, *The Stockmans Market* (559) 730-3311

Livestock Insurance:

An agent is available sale day to facilitate any insurance needs you may have. Please see Joe for details.

Bull Delivery:

Free delivery in California and adjoining states up to 300 miles. All deliveries are made at the buyer's risk. Take \$100 off the purchase price for every bull hauled home sale day.

Hospitality:

Refreshments and food are available on Wednesday afternoon and all day on sale day.

Bull Guarantee:

All bulls selling have passed a Breeding Soundness Exam prior to sale. To insure your investment, the Beef Solutions Team will guarantee all bulls against breeding injury, and to be sound breeders for the first breeding season. Breeding Season is defined as the 90-day period following the first turnout of bulls. If a problem arises, contact us immediately and we will provide a replacement bull if available, or if the buyer prefers, credit toward a bull will be given for the upcoming sale, less salvage value of the injured bull. Notification of an injury or problem PRIOR to bull being sold for salvage is required for the actions of the guarantee.

Terms & Conditions:

All purchases are to be settled for SALE DAY unless prior arrangements have been made. Cattle will all sell under the suggested Terms and Conditions of the American Angus Association (http://www.angus.org/Pub/suggested_sale_terms.pdf).

Disclaimer:

The Beef Solutions Breeders and Circle Ranch assume no liability for accidents, injury or Covid-19 exposure that may occur. Attend the sale at your own risk.

Photo Credits:

Special thanks to Logan & Stevie Ipsen for bull photos; Savannah Molina for bull and landscape photos; Rick Raef at Working Ranch Photography, Patricia Fischer, Kati Roberti and Grant Company for landscape photos.



The Beef Solutions Team will once again offer the user-friendly toolbox in this year's sale book to help you in your buying decisions. Below the pedigree and genetic information, we've listed percentile rankings within breed and labels for individual outliers for particular traits.

Additionally, we're providing a toolbox that identifies different solutions (for Angus and SimAngus™). This reference is helpful to quickly find sires that can provide a specific service – like breeding heifers or improving carcass and performance – in your calf crop.

ANGUS BEEF SOLUTIONS

- **CALVING EASE SOLUTION** - A tool to consider when selecting heifer bull candidates. Bull has a 1.4 Birth Wt. EPD or less and a Calving Ease Direct (CED) EPD in the top 40% of the breed.
- **PERFORMANCE SOLUTION** - Bull ranks in the top 50% of the breed for his Weaning Weight and Yearling Weight EPDs.
- **\$EN SOLUTION** - Bull ranks in the top 50% of the entire breed for \$Energy.
- **\$W SOLUTION** - Bull ranks in the top 50% of the entire breed for \$Wean.

SIMANGUS™ BEEF SOLUTIONS

RIGHT CHOICE powered by RIGHT MATE



ACCREDITED GENOMIC PLUS



ACCREDITED CALVING EASE



ACCREDITED TERMINAL MATE

SEE PAGE 12 FOR DETAILS.

1 **SALE BULL NAME** 3/4 SM 1/4 AM • HOMOZYGOUS BLACK

BD: 8/8/2021 REG #: 4019611 TATTOO: J258

SIRE PATERNAL GRAND SIRE PATERNAL GRAND SIRE SIRE PATERNAL GRAND SIRE DAM
SIRE REG.# PATERNAL GRAND DAM PATERNAL GRAND DAM SIRE PATERNAL GRAND DAM DAM

DAM MATERNAL GRAND SIRE MATERNAL GRAND SIRE SIRE MATERNAL GRAND SIRE DAM
DAM REG.# MATERNAL GRAND DAM MATERNAL GRAND DAM SIRE MATERNAL GRAND DAM DAM

ACT BW 78
ADJ WW 650
ADJ YW 1142

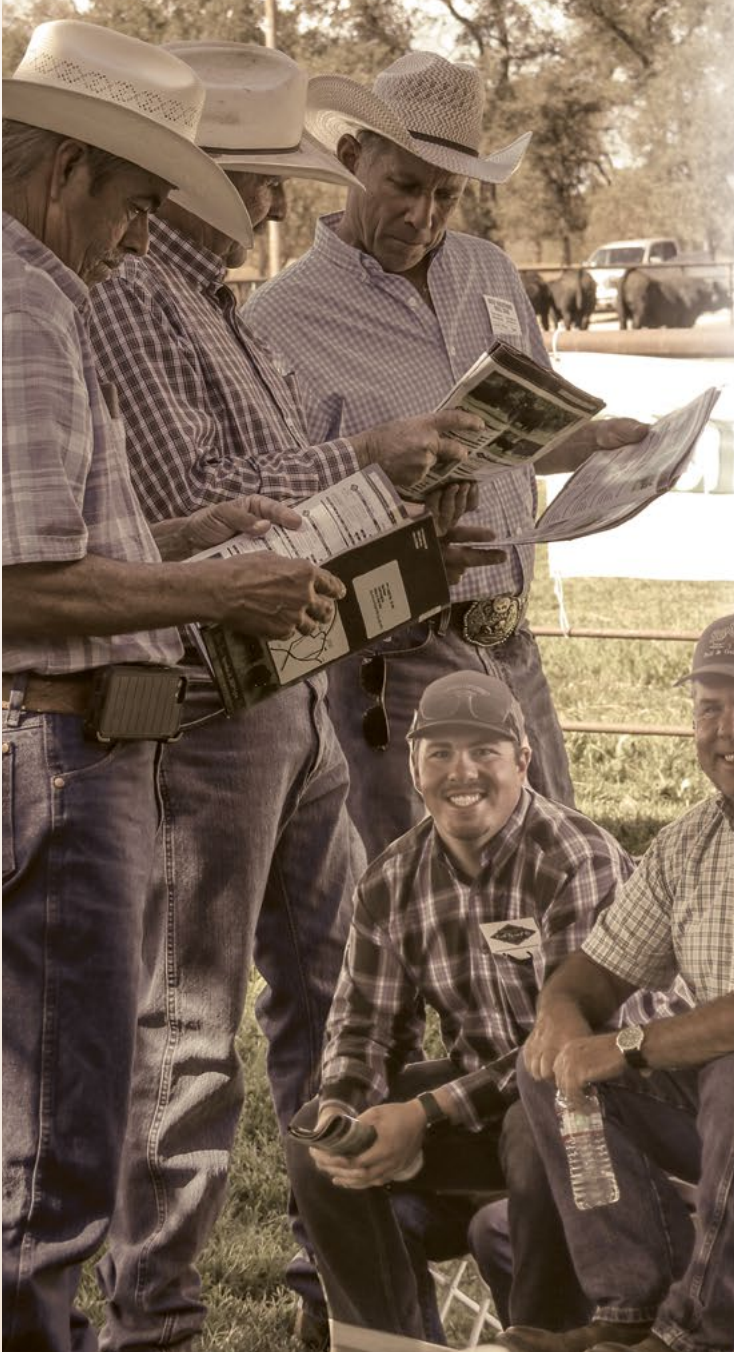
CE	BW	WW	YW	MCE	MILK	STAY	MARB.	REA	API	TI
15.1	-2.5	80	125	9.7	21.1	16.1	0.43	0.97	151	876

➤ Calving Ease ➤ Performance ➤ \$EN ➤ \$WN

Fractional Breed Breakdown
 SimAngus bull who will not sire a red calf
 SimAngus Beef Solutions
 Actual Performance
 EPD's
 Angus Beef Solutions



We humbly Thank You
FOR YOUR CONSIDERATION AND RETURNED BUSINESS



We are continually amazed by the **resiliency of the American rancher and their cattle**. You've persisted amidst drought and fires, regulatory challenges and more to help one another, acting with integrity no matter the cost. **We pray you will continue to forge forward, confident in your ability to overcome whatever challenges arise**, with faith and hope, *embracing the gift of a brand new day.*

Self reliance, honor, confidence and optimism: these are the values that built America and, by your example, will continue to mold our great nation into a bright and prosperous future. Keep fighting the good fight, friends.

**WE'LL BE RIGHT HERE WITH YOU,
EVERY STEP OF THE WAY.**



Circle Ranch

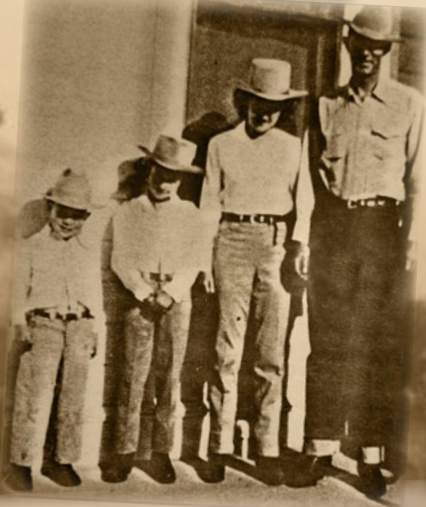


For generations, environmental adaptability has been and continues to be one of the most important breeding goals at Circle Ranch. Cows should work for their owners, not the other way around. We run our cows in a similar fashion to the majority of our customers to help ensure they will work in a variety of environments and promote profitability. **That, too, is part of the reason we harness the power of heterosis to create a more durable genetic product capable of breeding and lasting longer regardless of the environmental challenges posed.** We absolutely have a herd target for mature size that we think best fits the majority of our customers and the larger beef industry. The lions share of our bulls hit that target dead center and many of our customers prefer them. On the edges, however, you will find genetics here that can **produce power house performance** for higher resource situations as well as some lines created **to minimize maintenance requirements for low-input regions.**





From left: Tim, Jill, Cameron, Austin, Taylor and Savannah





BALANCE THE SCALES

BREED EFFECTS FOR COW MATURE WEIGHT (MWT)^{abc}

Angus	0
Charolais	-20 lb.
Hereford	-39 lb.
Simmental	-74 lb.

Big cows come with big feed bills.

Simmental-influenced cows are an average **74 lb. lighter** at maturity than Angus-sired counterparts, according to a recent U.S. Meat Animal Research Center study.^{a,d}

While Simmental is sized for more efficient gains, 20-year genetic trendlines also show the breed offers reliable calving ease, early growth and cow longevity.

That's a balanced herd built for profit.

STAND STRONG SIMMENTAL

406-587-4531 • simmental.org

^aUSMARC, Zimmerman, M., et al., "Breed and heterotic effects for mature weight in beef cattle," *J. of Anim. Sci.*, Vol. 99, 2021. ^bAdjusted for sire sampling, Angus was the heaviest at maturity among the 16 breeds evaluated. Solutions are deviations from Angus. YW EPDs were extracted from genetic evaluations conducted in 2019. ^cEstimate of MWT differences at 6 years of age. ^dThe study considered 108,857 weight records from 5,156 crossbred cows sired by 787 bulls.

Improved Buying Confidence with Greater Genomic **ASSURANCE**

Access to more and better information has always been key to making wise decisions. The evolution and improvement of genetic evaluation tools too has given us an ever-clearer picture of the true genetic makeup of cattle and thus a better view of the value proposition. RightMate, powered by Top Genomics LLC is taking the evaluation of genetics and genomics one giant step further. By combining specific genomic information with the long-proven value of EPDs, this new advancement in technology improves our depth and precision when evaluating the actual ability to transmit value and profit.

The 3 Accreditation Logos below are designed to simplify bull selection and improve buyer confidence by more accurately describing the genetics offered and by reducing risk. What this means to you as a customer is a much greater assurance that you are getting both what you want and need from the genetics you purchase. What it means to your seedstock provider is access to RightMate technology that simply sets them apart from the rest of the industry.



ACCREDITED GENOMIC PLUS – For the majority of producers who simply need consistent and balanced genetic improvement, without genomic setbacks, G+ Accredited bulls should be on your list for premium purchase. These sires will absolutely move you forward for both cost reduction and income producing traits and substantially reduce risk when compared to all other evaluation programs. It's simple, the right genes are in these bulls to help secure a profitable future and they have great EPDs to match!



ACCREDITED CALVING EASE – Simply find bulls with the ACE logo for third party Accredited, secure Calving Ease bulls. Though we have had tools in the past to assist in choosing heifer bulls, we've never had one nearly this effective. The reduced risk that comes with this genomic certification will simply make your decisions easier and your heifer calving season more successful. Purchase special purpose ACE bulls with confidence. They will deliver consistent and predictable calving ease.



ACCREDITED TERMINAL MATE – Just like an ATM machine makes it simpler to access your cash, the ATM Logo highlights bulls accredited to generate extra cash income as soon as your next calf crop! These bulls are meant specifically to use only on mature cows and for the purpose of adding performance, pay weight and end product value to market.

Circle Ranch

CALIFORNIA'S *largest supplier* OF SIMANGUS™ BULLS!

**“IT HAS NEVER BEEN EASIER TO MARKET
SIMANGUS™ SIRE FEEDER CATTLE”**

Kansas State University has been tracking Superior Livestock Auction data since 2010. During the summer of 2020 data analysis of 3,280 Lots and 394,900 head showed SimAngus sired calves earned more at sale time than all other calves.

BULL DEVELOPMENT

This is our fourth year developing our bulls at home. Last year we added two additional large pens in a rolling oak woodland area to again assure the bulls have plenty of shade and room to roam. The larger pen sizes gives the bulls a better chance to travel, stay loose jointed, athletic, and better prepared

for turn out day . Our ration which includes nearly 50% haylage from our own irrigated pastures, helps us reach our goal of a slower more consistent rate of gain that we feel extends the years of service of the bulls for our customers. Again on sale day you will notice the bulls that are slightly lighter in

weight and condition but are freer moving and more athletic and will not lose as much weight during the breeding season. Because the bulls are right here at home they are available for viewing any day from May until sale day.

BROAD RANGE *sons*



LOT 1 • CIRCLE BROAD RANGE J258

1 CIRCLE BROAD RANGE J258 3/4 SM 1/4 AN • HOMOZYGOUS BLACK
 BD: 8/8/2021 REG #: 4019611 TATT00: J258

CCR WIDE RANGE 9005A
GIBBS 7382E BROAD RANGE
3404807
 SSF BLK LOUISE Y534

CIRCLE THE BASES D384
CIRCLE THE BASES G78
3732110
 CIRCLE W172 Z25

S D S GRADUATE 006X
 CCR MS APPLE 9332W
 SSF BLK MIDLAND T525
 SSF BLK LOUISE S824

CIRCLE OLD SCHOOL B62
 CIRCLE OLIE W11
 CIRCLE LUCKY MAN W172
 CIRCLE J031 L030

G+

ACT BW	78
ADJ WW	650
ADJ YW	1142

CE	BW	WW	YW	MCE	MILK	STAY	MARB.	REA	API	TI
15.1	-2.5	80	125	9.7	21.1	16.1	0.43	0.97	151	876

2 CIRCLE BROAD RANGE J23 3/4 SM 1/4 AN • HOMOZYGOUS BLACK
 BD: 7/19/2021 REG #: 4018652 TATT00: J23

CCR WIDE RANGE 9005A
GIBBS 7382E BROAD RANGE
3404807
 SSF BLK LOUISE Y534

CIRCLE RESOURCE C306
CIRCLE RESOURCE F142
-3547703
 C161

S D S GRADUATE 006X
 CCR MS APPLE 9332W
 SSF BLK MIDLAND T525
 SSF BLK LOUISE S824

S A V RESOURCE 1441
 CIRCLE OLIE W11
 MR NLC ENTREPRENEUR 1227
 CIRCLE GRADUATE A57

G+ ATM

ACT BW	85
ADJ WW	633
ADJ YW	1226

CE	BW	WW	YW	MCE	MILK	STAY	MARB.	REA	API	TI
13	1.6	99	171	8.3	23.7	16	0.26	1.34	142	91.3



Gibbs 7382E Broad Range • SIRE OF LOTS 1 & 2

LOT 2 • CIRCLE BROAD RANGE J23

AVE. SIMANGUS™ EPDS, 2021	%	CE	BW	WW	YW	MCE	MLK	STY	MRB	REA	API	TI
Avg	12.20	0.40	76	116	6.60	22.60	15.30	0.30	0.66	130	78	

CIRCLE MOONSHOT *sons*



Circle Moonshot 983 - SIRE OF LOTS 3-12

Moonshot was our high-seller in 2020 to Gilliland Livestock in Davis, CA. Processing balanced EPDs across the board Moonshot progeny is our most consistent sire group this year. Sons all proved to have above average performance and the daughters are the soggy deep middled kind that work best in our program. His dam Circle Upgrade A165 has been our most consistent donor.

3

CIRCLE MOONSHOT J61 5/8 SM 3/8 AN • HOMOZYGOUS BLACK
 BD: 7/24/2021 REG #: 4019609 TATTOO: J61

CIRCLE THE BASES D384
CIRCLE MOONSHOT G83
3703072
 CIRCLE UPGRADE A165

TJ OMAHA 378A
CIRCLE OMAHA C321
3123328
 CIRCLE LUCKY MAN Y310

CIRCLE OLD SCHOOL B62
 CIRCLE OLIE W11
 MR NLC UPGRADE U8676
 ADVANTAGE KIND PRINCESS 2336
 MR NLC UPGRADE U8676
 T J MISS BANDO S27
 GW LUCKY MAN 644N
 TRINITY ALEXANDRIA 3215



ACT BW
92
 ADJ WW
732
 ADJ YW
1344

CE	BW	WW	YW	MCE	MILK	STAY	MARB.	REA	API	TI
9.4	3.8	109	169	6.2	16.5	17.3	0.24	0.69	135	90.9



LOT 3 • CIRCLE MOONSHOT J61

4

CIRCLE MOONSHOT J79 1/2 SM 1/2 AN • HOMOZYGOUS BLACK
 BD: 7/24/2021 REG #: 4019622 TATTOO: J79

CIRCLE THE BASES D384
CIRCLE MOONSHOT G83
3703072
 CIRCLE UPGRADE A165

CIRCLE RIGHT ON Y189
CIRCLE Y189 A39
4019599
 W103

CIRCLE OLD SCHOOL B62
 CIRCLE OLIE W11
 MR NLC UPGRADE U8676
 ADVANTAGE KIND PRINCESS 2336
 SRS RIGHT-ON 22R
 CIRCLE QUEEN MOTHER N065

ACT BW
94
 ADJ WW
654
 ADJ YW
1155

CE	BW	WW	YW	MCE	MILK	STAY	MARB.	REA	API	TI
9	3.1	87	137	4.3	24.2	13.7	0.29	0.72	123	81.2



LOT 4 • CIRCLE MOONSHOT J79

5

CIRCLE MOONSHOT J232 5/8 SM 3/8 AN • HOMOZYGOUS BLACK
 BD: 7/31/2021 REG #: 4018798 TATTOO: J232

CIRCLE THE BASES D384
CIRCLE MOONSHOT G83
3703072
 CIRCLE UPGRADE A165

HOOKS PACESETTER 8P
CIRCLE PACESETTER B18
3063797
 CIRCLE NET WORTH Z54

CIRCLE OLD SCHOOL B62
 CIRCLE OLIE W11
 MR NLC UPGRADE U8676
 ADVANTAGE KIND PRINCESS 2336
 HOOKS SHEAR FORCE 38K
 HOOKS MEAH 22M
 S A V NET WORTH 4200
 BDV DENISE L118



ACT BW
93
 ADJ WW
730
 ADJ YW
1196

CE	BW	WW	YW	MCE	MILK	STAY	MARB.	REA	API	TI
14	1.3	85	129	7.9	22.7	14.8	0.02	1.08	119	76.2



LOT 5 • CIRCLE MOONSHOT J232

AVE. SIMANGUS™ EPDS, 2021	%	CE	BW	WW	YW	MCE	MLK	STY	MRB	REA	API	TI
	Avg	12.20	0.40	76	116	6.60	22.60	15.30	0.30	0.66	130	78

CIRCLE MOONSHOT *sons*



LOT 6 • CIRCLE MOONSHOT J185

6 CIRCLE MOONSHOT J185 5/8 SM 3/8 AN • HOMOZYGOUS BLACK
 BD: 7/30/2021 REG #: 4018765 TATTOO: J185

CIRCLE THE BASES D384
CIRCLE MOONSHOT G83
3703072
 CIRCLE UPGRADE A165

DKSR MR OLIE X4
CIRCLE MR OLIE A26
2856612
 CIRCLE EMBLAZON W32

CIRCLE OLD SCHOOL B62
 CIRCLE OLIE W11

MR NLC UPGRADE U8676
 ADVANTAGE KIND PRINCESS 2336

ELLINGSON LEGACY M229
 SRS U101

O C C EMBLAZON 854E
 TFS CHRISTI 327N

ACT BW	86
ADJ WW	689
ADJ YW	1297

CE	BW	WW	YW	MCE	MILK	STAY	MARB.	REA	API	TI
11.9	2.5	84	133	6.1	22	17.2	0.2	0.9	129	78.3



LOT 9 • CIRCLE MOONSHOT J143

9 CIRCLE MOONSHOT J143 5/8 SM 3/8 AN • HOMOZYGOUS BLACK
 BD: 7/27/2021 REG #: 4018733 TATTOO: J143

CIRCLE THE BASES D384
CIRCLE MOONSHOT G83
3703072
 CIRCLE UPGRADE A165

TRIPLE C BETTIS S72J
CIRCLE BETTIS X11
2583520
 CIRCLE QUEEN MOTHER N065

CIRCLE OLD SCHOOL B62
 CIRCLE OLIE W11

MR NLC UPGRADE U8676
 ADVANTAGE KIND PRINCESS 2336

HOOKS SHEAR FORCE 38K
 LUCAS JOSIE 19K

N BAR EMULATION EXT
 CIRCLE QUEEN MOTHER J025

ACT BW	85
ADJ WW	705
ADJ YW	1155

CE	BW	WW	YW	MCE	MILK	STAY	MARB.	REA	API	TI
11.8	2	90	135	6.7	20.1	15.6	0.07	0.86	121	78.4

7 CIRCLE MOONSHOT J230 5/8 SM 3/8 AN • HOMOZYGOUS BLACK
 BD: 7/28/2021 REG #: 4019619 TATTOO: J230

CIRCLE THE BASES D384
CIRCLE MOONSHOT G83
3703072
 CIRCLE UPGRADE A165

MR NLC ENTREPRENEUR 1227
CIRCLE ENTREPRENEUR D18
3916440
 CIRCLE Y189 B175

CIRCLE OLD SCHOOL B62
 CIRCLE OLIE W11

MR NLC UPGRADE U8676
 ADVANTAGE KIND PRINCESS 2336

TNT TANKER U263
 NLC H MAN T7833

CIRCLE RIGHT ON Y189
 CIRCLE THUNDER X41

ACT BW	95
ADJ WW	704
ADJ YW	1226

CE	BW	WW	YW	MCE	MILK	STAY	MARB.	REA	API	TI
10.1	0.6	80	123	6.6	25.7	14.5	0.17	0.64	120	76.7

10 CIRCLE MOONSHOT J132 5/8 SM 3/8 AN • HOMOZYGOUS BLACK
 BD: 7/25/2021 REG #: 4018724 TATTOO: J132

CIRCLE THE BASES D384
CIRCLE MOONSHOT G83
3703072
 CIRCLE UPGRADE A165

RDDS FUTUREPROTOTYPE 13M
CIRCLE PROTOTYPE W61
2535810
 CIRCLE D27 G103

CIRCLE OLD SCHOOL B62
 CIRCLE OLIE W11

MR NLC UPGRADE U8676
 ADVANTAGE KIND PRINCESS 2336

GW LUCKY DICE 187H
 C M MERLE 777E

BLACK MICK
 D27_

ACT BW	84
ADJ WW	564
ADJ YW	1146

CE	BW	WW	YW	MCE	MILK	STAY	MARB.	REA	API	TI
12.3	2.1	84	132	8.2	19.4	14.9	0.09	0.8	119	75.5

8 CIRCLE MOONSHOT J178 3/8 SM 5/8 AN • HOMOZYGOUS BLACK
 BD: 7/29/2021 REG #: 4018761 TATTOO: J178

CIRCLE THE BASES D384
CIRCLE MOONSHOT G83
3703072
 CIRCLE UPGRADE A165

B245
-3063767
 CIRCLE N241 R76

CIRCLE OLD SCHOOL B62
 CIRCLE OLIE W11

MR NLC UPGRADE U8676
 ADVANTAGE KIND PRINCESS 2336

CIRCLE J323 N249
 CIRCLE QUEEN MOTHER J025

ACT BW	82
ADJ WW	652
ADJ YW	1136

CE	BW	WW	YW	MCE	MILK	STAY	MARB.	REA	API	TI
12.9	-0.1	72	114	7.6	17.2	9.9	0.33	0.77	123	76.6

11 CIRCLE MOONSHOT J91 1/2 SM 1/2 AN • HOMOZYGOUS BLACK
 BD: 7/26/2021 REG #: 4018693 TATTOO: J91

CIRCLE THE BASES D384
CIRCLE MOONSHOT G83
3703072
 CIRCLE UPGRADE A165

CIRCLE BEEF KING C100
CIRCLE KING WALLY F67
-3547675
 D222

CIRCLE OLD SCHOOL B62
 CIRCLE OLIE W11

MR NLC UPGRADE U8676
 ADVANTAGE KIND PRINCESS 2336

WS BEEF KING W107
 CIRCLE WALLY 8118

CIRCLE W190 Y69

ACT BW	67
ADJ WW	664
ADJ YW	1098

CE	BW	WW	YW	MCE	MILK	STAY	MARB.	REA	API	TI
18.8	-4.1	68	102	11.8	19.1	18.8	0.37	0.64	155	80.6

AVE. SIMANGUS™ EPDS, 2021	%	CE	BW	WW	YW	MCE	MLK	STY	MRB	REA	API	TI
Avg		12.20	0.40	76	116	6.60	22.60	15.30	0.30	0.66	130	78

CIRCLE MOONSHOT & POWERGRID *sons*

12

CIRCLE MOONSHOT J25 1/2 SM 1/2 AN • HOMOZYGOUS BLACK
 BD: 7/19/2021 REG #: 4019610 TATTOO: J25

CIRCLE THE BASES D384
CIRCLE MOONSHOT G83
 3703072
 CIRCLE UPGRADE A165

CIRCLE OLD SCHOOL B62
 CIRCLE OLIE W11
 MR NLC UPGRADE U8676
 ADVANTAGE KIND PRINCESS 2336



ACT BW
58
 ADJ WW
538
 ADJ YW
1079

C352
 -3123347
 CIRCLE GAME PLAN A68

HL GAME PLAN R42X
 S C C MS EXT 1109

CE	BW	WW	YW	MCE	MILK	STAY	MARB.	REA	API	TI
18.8	-3	67	105	12.1	17.6	13	0.28	0.59	132	74.5



LOT 12 • CIRCLE MOONSHOT J25

13

CIRCLE POWER GRID J290 1/2 SM 1/2 AN • HOMOZYGOUS BLACK
 BD: 8/18/2021 REG #: 4018827 TATTOO: J290

TJ POWER GRID 363Y
CIRCLE POWER GRID E135
 3414311
 CIRCLE WALLY 6120

S A V NET WORTH 4200
 TJ 15T
 3C WALLY C240 BLK
 L1230

ACT BW
97
 ADJ WW
642
 ADJ YW
1187

B267
 -3063835
 CIRCLE RIGHT ON Y37

SRS RIGHT-ON 22R
 CIRCLE QUEEN MOTHER N065

CE	BW	WW	YW	MCE	MILK	STAY	MARB.	REA	API	TI
8.6	2.3	75	114	5.9	17.7	14.5	0.09	0.49	109	68.2



LOT 13 • CIRCLE POWER GRID J290

14

CIRCLE POWER GRID J194 3/8 SM 5/8 AN • HOMOZYGOUS BLACK
 BD: 8/13/2021 REG #: 4018772 TATTOO: J194

TJ POWER GRID 363Y
CIRCLE POWER GRID E135
 3414311
 CIRCLE WALLY 6120

S A V NET WORTH 4200
 TJ 15T
 3C WALLY C240 BLK
 L1230

ACT BW
102
 ADJ WW
674
 ADJ YW
1238

BANDO 85-4052
CIRCLE BANDO A18
 3273890
 CIRCLE SHEAR FORCE X82

TEHAMA BANDO 155
 NICHOLS QUEEN MOTHERX149
 HOOKS SHEAR FORCE 38K
 CIRCLE 1407 U22

CE	BW	WW	YW	MCE	MILK	STAY	MARB.	REA	API	TI
9.1	2.7	70	108	6.6	17.4	18	0.25	0.5	122	68.8



15

CIRCLE DUSTY J388 1/2 SM 1/2 AN • HOMOZYGOUS BLACK
 BD: 8/15/2021 REG #: 4018894 TATTOO: J388

TJ POWER GRID 363Y
DKSR DUSTY C42
 3027399
 DSR TEMPTING DESIGN U2

S A V NET WORTH 4200
 TJ 15T
 BON VIEW NEW DESIGN 878
 DSR SHES TEMPTING S879

ACT BW
90
 ADJ WW
824
 ADJ YW
1257

3C PASQUE 4331B B
CIRCLE PASQUE F182
 -3547718
 CIRCLE OLIE W11

STF MR MOMENTUM H508
 3C CROCUS Z2588 B
 ELLINGSON LEGACY M229
 CIRCLE R242 T111

CE	BW	WW	YW	MCE	MILK	STAY	MARB.	REA	API	TI
7.9	4.4	101	158	4.4	28.7	18.8	0.19	1.01	130	86



AVE. SIMANGUS™ EPDS, 2021	%	CE	BW	WW	YW	MCE	MLK	STY	MRB	REA	API	TI
Avg		12.20	0.40	76	116	6.60	22.60	15.30	0.30	0.66	130	78

CIRCLE COWBOY *sons*



LOT 16 • CIRCLE COWBOY J70

CCR 707 Cowboy 6055B - SIRE OF LOTS 16-25

16 CIRCLE COWBOY J70 1/2 SM 1/2 AN • HOMOZYGOUS BLACK
 BD: 7/24/2021 REG #: 4018681 TATTOO: J70

CCR COWBOY CUT 5048Z
CCR 707 COWBOY 6055B
2882669
 S D S PRINCESS 707T

CIRCLE UPGRADE 420B
CIRCLE UPGRADE D208
3273984
 CIRCLE GAME DAY A100

TRIPLE C SINGLETARY S3H
 CCR MS 4045 TIME 7322T
 LEMMON NEWSLINE C804
 S D S PRINCESS 562R

MR NLC UPGRADE U8676
 C C C MS EMBLAZON 704
 GDAR GAME DAY 449
 BDV DENISE L118



ACT BW
75
ADJ WW
630
ADJ YW
1103

CE	BW	WW	YW	MCE	MILK	STAY	MARB.	REA	API	TI
15.1	-1.3	75	114	8.6	22.4	21.2	0.55	0.61	162	85.3



LOT 18 • CIRCLE COWBOY J20S

17 CIRCLE COWBOY J110 1/2 SM 1/2 AN • HOMOZYGOUS BLACK
 BD: 7/21/2021 REG #: 4018707 TATTOO: J110

CCR COWBOY CUT 5048Z
CCR 707 COWBOY 6055B
2882669
 S D S PRINCESS 707T

W/C UNITED 956Y
CIRCLE TANKER A102
2856598
 CIRCLE QUEEN MOTHER N022

TRIPLE C SINGLETARY S3H
 CCR MS 4045 TIME 7322T
 LEMMON NEWSLINE C804
 S D S PRINCESS 562R

TNT TUITION U238
 MISS WERNING 956W
 CIRCLE S LEACHMAN 600U
 NICHOLS QUEEN MOTHERX149



ACT BW
95
ADJ WW
687
ADJ YW
1361

CE	BW	WW	YW	MCE	MILK	STAY	MARB.	REA	API	TI
8	2.3	82	130	6.7	27.4	14.5	0.28	0.99	117	76.4

18 CIRCLE COWBOY J20S 1/2 SM 1/2 AN • HOMOZYGOUS BLACK
 BD: 7/21/2021 REG #: 4018778 TATTOO: J20S

CCR COWBOY CUT 5048Z
CCR 707 COWBOY 6055B
2882669
 S D S PRINCESS 707T

TFS BLACK ONYX 1442Y
CIRCLE OYNX B193
3063857
 CIRCLE BETTIS X25

TRIPLE C SINGLETARY S3H
 CCR MS 4045 TIME 7322T
 LEMMON NEWSLINE C804
 S D S PRINCESS 562R

S A V PROVIDENCE 6922
 TFS MOCHA LATTE 1045L 6
 TRIPLE C BETTIS S72J
 CIRCLE QUEEN MOTHER N065



ACT BW
95
ADJ WW
719
ADJ YW
1131

CE	BW	WW	YW	MCE	MILK	STAY	MARB.	REA	API	TI
9.2	2.3	89	134	6.9	27.2	19.6	0.37	0.76	141	85

AVE. SIMANGUS™ EPDS, 2021	%	CE	BW	WW	YW	MCE	MLK	STY	MRB	REA	API	TI
	Avg	12.20	0.40	76	116	6.60	22.60	15.30	0.30	0.66	130	78

19 CIRCLE COWBOY J145 1/2 SM 1/2 AN • HOMOZYGOUS BLACK

BD: 7/28/2021 REG #: 4018735 TATTOO: J145

CCR COWBOY CUT 5048Z
CCR 707 COWBOY 6055B
2882669 S D S PRINCESS 707T

TRIPLE C SINGLETARY S3H
CCR MS 4045 TIME 7322T

LEMMON NEWSLINE C804
S D S PRINCESS 562R

CIRCLE UPGRADE A348
CIRCLE A348 E199
3414138 CIRCLE WALLY 8118

MR NLC UPGRADE U8676
TRINITY ALEXANDRIA 3215
3C WALLY C240 BLK
762 / 762



ACT BW
90
ADJ WW
730
ADJ YW
1260

CE	BW	WW	YW	MCE	MILK	STAY	MARB.	REA	API	TI
10.4	0.6	81	125	6.8	23.3	19.9	0.26	0.96	137	79.5



LOT 19 • CIRCLE COWBOY J145

20 CIRCLE COWBOY J38 1/2 SM 1/2 AN • HOMOZYGOUS BLACK

BD: 7/20/2021 REG #: 4018663 TATTOO: J38

CCR COWBOY CUT 5048Z
CCR 707 COWBOY 6055B
2882669 S D S PRINCESS 707T

TRIPLE C SINGLETARY S3H
CCR MS 4045 TIME 7322T

LEMMON NEWSLINE C804
S D S PRINCESS 562R

TFS BLACK ONYX 1442Y
CIRCLE OYNX B71
3063839 CIRCLE RIGHT ON Y34

S A V PROVIDENCE 6922
TFS MOCHA LATTE 1045L 6

SRS RIGHT-ON 22R
CIRCLE QUEEN MOTHER N065



ACT BW
87
ADJ WW
795
ADJ YW
1319

CE	BW	WW	YW	MCE	MILK	STAY	MARB.	REA	API	TI
12.9	1	87	129	8.4	30.8	22	0.2	0.87	141	81.4

23 CIRCLE COWBOY J144 5/8 SM 3/8 AN • HOMOZYGOUS BLACK

BD: 7/27/2021 REG #: 4018734 TATTOO: J144

CCR COWBOY CUT 5048Z
CCR 707 COWBOY 6055B
2882669 S D S PRINCESS 707T

TRIPLE C SINGLETARY S3H
CCR MS 4045 TIME 7322T

LEMMON NEWSLINE C804
S D S PRINCESS 562R

MR NLC ENTREPRENEUR 1227
CIRCLE ENTRENEUR D24
3274096 CRCL PACESETTER B155

TNT TANKER U263
NLC H MAN T7833

HOOKS PACESETTER 8P
CIRCLE THUNDER Y9



ACT BW
83
ADJ WW
678
ADJ YW
1178

CE	BW	WW	YW	MCE	MILK	STAY	MARB.	REA	API	TI
13.8	-1.6	81	126	9.6	24.2	16.6	0.54	0.61	154	88.9

21 CIRCLE COWBOY J64 1/2 SM 1/2 AN • HETEROZYGOUS BLACK

BD: 7/25/2021 REG #: 4018676 TATTOO: J64

CCR COWBOY CUT 5048Z
CCR 707 COWBOY 6055B
2882669 S D S PRINCESS 707T

TRIPLE C SINGLETARY S3H
CCR MS 4045 TIME 7322T

LEMMON NEWSLINE C804
S D S PRINCESS 562R

CIRCLE POWER GRID D63
CIRCLE POWER GRID F215
-3547821 CIRCLE BEEF KING C5

TJ POWER GRID 363Y
CIRCLE DUAL FOCUS Z31

WS BEEF KING W107
CIRCLE IN FOCUS X26



ACT BW
66
ADJ WW
660
ADJ YW
1167

CE	BW	WW	YW	MCE	MILK	STAY	MARB.	REA	API	TI
17	-0.8	84	124	12.3	23.3	21	0.36	0.71	150	82.8

24 CIRCLE COWBOY J135 1/2 SM 1/2 AN • HOMOZYGOUS BLACK

BD: 7/26/2021 REG #: 4018727 TATTOO: J135

CCR COWBOY CUT 5048Z
CCR 707 COWBOY 6055B
2882669 S D S PRINCESS 707T

TRIPLE C SINGLETARY S3H
CCR MS 4045 TIME 7322T

LEMMON NEWSLINE C804
S D S PRINCESS 562R

TJ DIPLOMAT 294D
CIRCLE DIPLOMAT F158
-3547709 CIRCLE SUPERIOR Y42

MAR INNOVATION 251
TJ 33Y

MR NLC SUPERIOR S6018
CIRCLE CISCO L001



ACT BW
89
ADJ WW
623
ADJ YW
1094

CE	BW	WW	YW	MCE	MILK	STAY	MARB.	REA	API	TI
9.8	1.2	83	124	5.9	22	16.4	0.53	0.96	138	83.6

22 CIRCLE COWBOY J171 1/2 SM 1/2 AN • HOMOZYGOUS BLACK

BD: 7/29/2021 REG #: 4018756 TATTOO: J171

CCR COWBOY CUT 5048Z
CCR 707 COWBOY 6055B
2882669 S D S PRINCESS 707T

TRIPLE C SINGLETARY S3H
CCR MS 4045 TIME 7322T

LEMMON NEWSLINE C804
S D S PRINCESS 562R

HOOKS SHEAR FORCE 38K
CIRCLE SHEAR FORCE B21
3273889 CIRCLE STOCKMAN K43

NICHOLS LEGACY G151
C&D TRACY

TC STOCKMAN 365
NICHOLS QUEEN MOTHERX149

ACT BW
78
ADJ WW
675
ADJ YW
1121

CE	BW	WW	YW	MCE	MILK	STAY	MARB.	REA	API	TI
15.1	-1.7	75	112	9.8	22.8	18.5	0.38	0.86	148	82.2

25 CIRCLE COWBOY J26 1/2 SM 1/2 AN • HOMOZYGOUS BLACK

BD: 7/20/2021 REG #: 4018654 TATTOO: J26

CCR COWBOY CUT 5048Z
CCR 707 COWBOY 6055B
2882669 S D S PRINCESS 707T

TRIPLE C SINGLETARY S3H
CCR MS 4045 TIME 7322T

LEMMON NEWSLINE C804
S D S PRINCESS 562R

E132
-3414178 B293

CIRCLE W172 Y23

ACT BW
81
ADJ WW
586
ADJ YW
1082

CE	BW	WW	YW	MCE	MILK	STAY	MARB.	REA	API	TI
12.1	0.6	87	138	8.2	21.7	15.7	0.38	0.4	135	83.3

AVE. SIMANGUS™ EPDS, 2021	%	CE	BW	WW	YW	MCE	MLK	STY	MRB	REA	API	TI
Avg		12.20	0.40	76	116	6.60	22.60	15.30	0.30	0.66	130	78

BAREBACK *sons*



LOT 26 • CIRCLE BAREBACK J503

Gibbs 8281F Bareback - SIRE OF LOTS 26-30

26 CIRCLE BAREBACK J503 1/2 SM 1/2 AN • HOMOZYGOUS BLACK
 BD: 7/21/2021 REG #: 4018906 TATTOO: J503

BALDRIDGE BRONC
GIBBS 8281F BAREBACK
3569222
 WS MISS ALL DAKOTA B208

CIRCLE ALUMNI C767
CIRCLE ALUMNI F103
-3547888
 CIRCLE OLIE Z62

EF COMMANDO 1366
 BALDRIDGE ISABEL Y69
 WS ALL-AROUND Z35
 WS LITTLE SISTER W37
 S D S ALUMNI 115X
 8106X
 ELLINGSON LEGACY M229
 S C C MS EXT 1109

G+

ACT BW 81
 ADJ WW 767
 ADJ YW 1193

CE	BW	WW	YW	MCE	MILK	STAY	MARB.	REA	API	TI
8.2	0.6	98	151	5.8	27.9	20.2	0.42	1.03	145	91.7

28 CIRCLE BAREBACK J103 1/2 SM 1/2 AN • HOMOZYGOUS BLACK
 BD: 7/18/2021 REG #: 4055221 TATTOO: J103

BALDRIDGE BRONC
GIBBS 8281F BAREBACK
3569222
 WS MISS ALL DAKOTA B208

CIRCLE ALUMNI C767
E383
-3414283
 CIRCLE OLIE Z62

EF COMMANDO 1366
 BALDRIDGE ISABEL Y69
 WS ALL-AROUND Z35
 WS LITTLE SISTER W37
 S D S ALUMNI 115X
 8106X
 ELLINGSON LEGACY M229
 S C C MS EXT 1109

ACT BW 90
 ADJ WW 673
 ADJ YW 1109

CE	BW	WW	YW	MCE	MILK	STAY	MARB.	REA	API	TI
7	2.7	92	142	5	25.2	18.7	0.37	0.75	132	83.3

27 CIRCLE BAREBACK JS3 5/8 SM 3/8 AN • HOMOZYGOUS BLACK
 BD: 7/22/2021 REG #: 4019773 TATTOO: JS3

BALDRIDGE BRONC
GIBBS 8281F BAREBACK
3569222
 WS MISS ALL DAKOTA B208

KBHR D010
CIRCLE D10 G76
3732108
 CIRCLE SHEAR FORCE B145

EF COMMANDO 1366
 BALDRIDGE ISABEL Y69
 WS ALL-AROUND Z35
 WS LITTLE SISTER W37
 CCR GRAVITY 9064A
 KBHR B120
 HOOKS SHEAR FORCE 38K
 CIRCLE STOCKMAN K43

ACT BW 78
 ADJ WW 573
 ADJ YW 1139

CE	BW	WW	YW	MCE	MILK	STAY	MARB.	REA	API	TI
11.2	0.2	81	119	8.2	22.3	18.9	0.41	0.38	143	82.7



LOT 27 • CIRCLE BAREBACK JS3

AVE. SIMANGUS™ EPDS, 2021	%	CE	BW	WW	YW	MCE	MLK	STY	MRB	REA	API	TI
	Avg	12.20	0.40	76	116	6.60	22.60	15.30	0.30	0.66	130	78

BAREBACK *sons*

29 **CIRCLE BAREBACK J46** 5/8 SM 3/8 AN • HOMOZYGOUS BLACK
 BD: 7/23/2021 REG #: 4018668 TATTOO: J46

BALDRIDGE BRONC
GIBBS 8281F BAREBACK
 3569222
 WS MISS ALL DAKOTA B208

E386
 -3414128
 CIRCLE BEEF KING C100
 CIRCLE OLIE Z62

EF COMMANDO 1366
 BALDRIDGE ISABEL Y69
 WS ALL-AROUND Z35
 WS LITTLE SISTER W37
 WS BEEF KING W107
 CIRCLE WALLY 8118
 ELLINGSON LEGACY M229
 S C C MS EXT 1109

ACT BW
83
ADJ WW
657
ADJ YW
1147

CE	BW	WW	YW	MCE	MILK	STAY	MARB.	REA	API	TI
9.5	1.5	92	141	6.5	23.8	16.2	0.26	0.74	131	84.8



LOT 29 • CIRCLE BAREBACK J46

30 **CIRCLE BAREBACK J96** 5/8 SM 3/8 AN • HOMOZYGOUS BLACK
 BD: 7/26/2021 REG #: 4018697 TATTOO: J96

BALDRIDGE BRONC
GIBBS 8281F BAREBACK
 3569222
 WS MISS ALL DAKOTA B208

G118
 -3731974
 CIRCLE THE BASES D384
 CIRCLE W172 Y33

EF COMMANDO 1366
 BALDRIDGE ISABEL Y69
 WS ALL-AROUND Z35
 WS LITTLE SISTER W37
 CIRCLE OLD SCHOOL B62
 CIRCLE OLIE W11
 CIRCLE LUCKY MAN W172
 CIRCLE FULL FIGURES S34

ACT BW
86
ADJ WW
625
ADJ YW
1161

CE	BW	WW	YW	MCE	MILK	STAY	MARB.	REA	API	TI
9.9	2.3	99	158	6.9	25.3	17.9	0.25	0.79	132	85.9

31 **CIRCLE RAINFALL J160** 1/2 SM 1/2 AN • HOMOZYGOUS BLACK
 BD: 7/27/2021 REG #: 4018748 TATTOO: J160

COLEMAN CHARLO 0256
S A V RAINFALL 6846
 3493406
 S A V BLACKCAP MAY 4136

CIRCLE OLIE W11
 2535754
 ELLINGSON LEGACY M229
 CIRCLE R242 T111

O C C PAXTON 730P
 BOHI ABIGALE 6014
 S A V 8180 TRAVELER 004
 S A V MAY 2397
 NICHOLS LEGACY G151
 ELLINGSON MS PSTOCK K58
 CIRCLE N207 R242
 CIRCLE DICE M122



ACT BW
90
ADJ WW
630
ADJ YW
1125

CE	BW	WW	YW	MCE	MILK	STAY	MARB.	REA	API	TI
16.3	-2.1	65	107	7.4	22.8	15	0.27	0.79	135	74.4



MOUNTAINEER *sons*



LOT 32 • CIRCLE MOUNTAINEER J50

Gibbs Mountaineer J50 - SIRE OF LOTS 32-35

32 CIRCLE MOUNTAINEER J50 1/2 SM 1/2 AN • HOMOZYGOUS BLACK
 BD: 7/24/2021 REG #: 4018671 TATTOO: J50

S D S ALUMNI 115X
GIBBS 3133A MOUNTAINEER
 2845421 GIBBS 9024W BLAKCAP7067T

HOOKS SHEAR FORCE 38K
 S D S QUEEN 801U
 TNT DUAL FOCUS T249
 GIBBS 7067T BLAKCAP 877

ACT BW 90
ADJ WW 717
ADJ YW 1295

F222
 -3547735 CIRCLE TOP GRADE Z61

MCM TOP GRADE 018X
 CIRCLE EMBLAZON T30

CE	BW	WW	YW	MCE	MILK	STAY	MARB.	REA	API	TI
9.4	2.8	84	146	4.6	29.2	12.4	0.44	0.78	131	85.1

34 CIRCLE MOUNTAINEER J30 5/8 SM 3/8 AN • HOMOZYGOUS BLACK
 BD: 7/20/2021 REG #: 4018658 TATTOO: J30

S D S ALUMNI 115X
GIBBS 3133A MOUNTAINEER
 2845421 GIBBS 9024W BLAKCAP7067T

HOOKS SHEAR FORCE 38K
 S D S QUEEN 801U
 TNT DUAL FOCUS T249
 GIBBS 7067T BLAKCAP 877

ACT BW 76
ADJ WW 593
ADJ YW 1096

GW PREDESTINED 701T
CIRCLE 701T Z143
 2761586 CIRCLE BETTIS X134

G A R PREDESTINED
 GW MISS LUCKY STRIKE 363
 TRIPLE C BETTIS S72J
 CIRCLE EMBLAZON R21

CE	BW	WW	YW	MCE	MILK	STAY	MARB.	REA	API	TI
17.7	-0.6	65	103	9.6	28.6	22.5	0.52	0.42	162	79.2

33 CIRCLE MOUNTAINEER J80 1/2 SM 1/2 AN • HOMOZYGOUS BLACK
 BD: 7/22/2021 REG #: 4018949 TATTOO: J80

S D S ALUMNI 115X
GIBBS 3133A MOUNTAINEER
 2845421 GIBBS 9024W BLAKCAP7067T

HOOKS SHEAR FORCE 38K
 S D S QUEEN 801U
 TNT DUAL FOCUS T249
 GIBBS 7067T BLAKCAP 877

ACT BW 94
ADJ WW 710
ADJ YW 1190

CIRCLE OLD SCHOOL B62
CIRCLE OLD SCHOOL D25
 3738867 B141

LEACHMAN RIGHT TIME
 HOOK'S XTRAVAGANZA 7X

CE	BW	WW	YW	MCE	MILK	STAY	MARB.	REA	API	TI
9.2	1.3	88	153	5.4	26	16	0.59	0.18	144	88.8

35 CIRCLE MOUNTAINEER J156 1/2 SM 1/2 AN • HOMOZYGOUS BLACK
 BD: 7/27/2021 REG #: 4018745 TATTOO: J156

S D S ALUMNI 115X
GIBBS 3133A MOUNTAINEER
 2845421 GIBBS 9024W BLAKCAP7067T

HOOKS SHEAR FORCE 38K
 S D S QUEEN 801U
 TNT DUAL FOCUS T249
 GIBBS 7067T BLAKCAP 877

ACT BW 91
ADJ WW 586
ADJ YW 1080

B222
 -3548245 CIRCLE M606 S42

KS TRAVELER M606
 CIRCLE LUCKY G103 L159

CE	BW	WW	YW	MCE	MILK	STAY	MARB.	REA	API	TI
9.9	1	74	123	6.2	25.6	174	0.45	0.39	135	778

AVE. SIMANGUS™ EPDS, 2021	%	CE	BW	WW	YW	MCE	MLK	STY	MRB	REA	API	TI
	Avg	12.20	0.40	76	116	6.60	22.60	15.30	0.30	0.66	130	78

BIG EASY *sons*

36 **CIRCLE BIG EASY J41** 5/8 SM 3/8 AN • HOMOZYGOUS BLACK
 BD: 7/21/2021 REG #: 4018665 TATTOO: J41

TJ FRANCHISE 451D
TJ BIG EASY 317F
 3459385 TJ 2B

TJ DIPLOMAT 294D
CIRCLE DIPLOMAT F172
 -3547714 CIRCLE MR OLIE A26

CCR COWBOY CUT 5048Z
 TJ MISS NET WORTH U11

MR NLC UPGRADE U8676
 TJ MISS NEW DAY U14

MAR INNOVATION 251
 TJ 33Y

DKSR MR OLIE X4
 CIRCLE EMBLAZON W32

G+

ACT BW	67
ADJ WW	553
ADJ YW	1138

CE	BW	WW	YW	MCE	MILK	STAY	MARB.	REA	API	TI
14.3	-0.7	85	140	6.2	27.7	14.9	0.43	0.83	147	89.1



LOT 36 • CIRCLE BIG EASY J41

37 **CIRCLE BIG EASY J207** 3/8 SM 5/8 AN • HETEROZYGOUS BLACK
 BD: 7/27/2021 REG #: 4018780 TATTOO: J207

TJ FRANCHISE 451D
TJ BIG EASY 317F
 3459385 TJ 2B

MYERS KEYSTONE M263
CIRCLE KEYSTONE F170
 3548271 CIRCLE ALL ABOARD D162

CCR COWBOY CUT 5048Z
 TJ MISS NET WORTH U11

MR NLC UPGRADE U8676
 TJ MISS NEW DAY U14

CONNEALY CAPITALIST 028
 MYERS QUEEN M180

WS ALL ABOARD B80
 CIRCLE QUEEN MOTHER N065

G+

ACT BW	86
ADJ WW	743
ADJ YW	1255

CE	BW	WW	YW	MCE	MILK	STAY	MARB.	REA	API	TI
10.6	1.1	96	146	5.6	24.4	17.8	0.51	0.62	146	91.4



LOT 37 • CIRCLE BIG EASY J207

38 **CIRCLE BIG EASY J119** 1/2 SM 1/2 AN • HOMOZYGOUS BLACK
 BD: 7/23/2021 REG #: 4018713 TATTOO: J119

TJ FRANCHISE 451D
TJ BIG EASY 317F
 3459385 TJ 2B

LEACHMAN RIGHT TIME
CIRCLE RIGHT TIME B99
 3063735 CIRCLE OLIE W11

CCR COWBOY CUT 5048Z
 TJ MISS NET WORTH U11

MR NLC UPGRADE U8676
 TJ MISS NEW DAY U14

N BAR EMULATION EXT
 LEACHMAN ERICA 0025

ELLINGSON LEGACY M229
 CIRCLE R242 T111

G+

ACT BW	90
ADJ WW	603
ADJ YW	1145

CE	BW	WW	YW	MCE	MILK	STAY	MARB.	REA	API	TI
12.9	0.3	76	123	6.2	21.3	20.2	0.42	0.61	149	80.8

40 **CIRCLE BIG EASY J142** 1/2 SM 1/2 AN • HOMOZYGOUS BLACK
 BD: 7/26/2021 REG #: 4018732 TATTOO: J142

TJ FRANCHISE 451D
TJ BIG EASY 317F
 3459385 TJ 2B

TRIPLE C BETTIS S72J
CIRCLE BETTIS X23
 2583529 CIRCLE HEIRESS L118 N074

CCR COWBOY CUT 5048Z
 TJ MISS NET WORTH U11

MR NLC UPGRADE U8676
 TJ MISS NEW DAY U14

HOOKS SHEAR FORCE 38K
 LUCAS JOSIE 19K

BON VIEW NEW DESIGN 878
 CIRCLE HEIRESS L118

G+

ACT BW	87
ADJ WW	657
ADJ YW	1092

CE	BW	WW	YW	MCE	MILK	STAY	MARB.	REA	API	TI
11.8	0	87	125	5.8	24.6	20.8	0.2	0.78	139	81.7

39 **CIRCLE BIG EASY J63** 5/8 SM 3/8 AN • HOMOZYGOUS BLACK
 BD: 7/25/2021 REG #: 4019614 TATTOO: J63

TJ FRANCHISE 451D
TJ BIG EASY 317F
 3459385 TJ 2B

CCR COWBOY CUT 5048Z
KBHR B120
 2935727 KBHR W001

CCR COWBOY CUT 5048Z
 TJ MISS NET WORTH U11

MR NLC UPGRADE U8676
 TJ MISS NEW DAY U14

TRIPLE C SINGLETARY S3H
 CCR MS 4045 TIME 7322T

S A V NET WORTH 4200
 KBHR T174

G+

ACT BW	60
ADJ WW	580
ADJ YW	1111

CE	BW	WW	YW	MCE	MILK	STAY	MARB.	REA	API	TI
15.5	-0.6	79	114	8.4	20.9	24.7	0.36	0.4	158	81.4

41 **CIRCLE BIG EASY J124** 1/2 SM 1/2 AN • HOMOZYGOUS BLACK
 BD: 7/22/2021 REG #: 4018716 TATTOO: J124

TJ FRANCHISE 451D
TJ BIG EASY 317F
 3459385 TJ 2B

HOOK'S YELLOWSTONE 97Y
OPEN 8 YELLOWSTONE C581
 3046402 GMAR IN FOCUS X264

CCR COWBOY CUT 5048Z
 TJ MISS NET WORTH U11

MR NLC UPGRADE U8676
 TJ MISS NEW DAY U14

HOOKS TAURUS 24T
 HOOKS SHEYENNE 77S

MYTTY IN FOCUS
 GMAR IMAGE MAKER U051

G+

ACT BW	89
ADJ WW	547
ADJ YW	1051

CE	BW	WW	YW	MCE	MILK	STAY	MARB.	REA	API	TI
13.3	-1.2	79	124	6.9	21.9	16.2	0.3	0.53	138	81.4

AVE. SIMANGUS™ EPDS, 2021	%	CE	BW	WW	YW	MCE	MLK	STY	MRB	REA	API	TI
Avg		12.20	0.40	76	116	6.60	22.60	15.30	0.30	0.66	130	78

CIRCLE ALUMNI *sons*



LOT 42 • CIRCLE ALUMNI J182

Circle Alumni F760 - SIRE OF LOTS 42-46

42 CIRCLE ALUMNI J182 1/2 SM 1/2 AN • HOMOZYGOUS BLACK

BD: 8/1/2021 REG #: 4019608 TATTOO: J182

S D S ALUMNI 115X
CIRCLE ALUMNI F760
3478667 8106X

HOOKS SHEAR FORCE 38K
S D S QUEEN 801U

O C C GREAT PLAINS 943G
OPEN 8 8106U

CIRCLE X53 B234
3535476 CIRCLE T5 X53

CIRCLE TWIN V P TO05
CIRCLE 1407 R34

CE	BW	WW	YW	MCE	MILK	STAY	MARB.	REA	API	TI
9.7	0.2	84	138	6.1	26.9	12.8	0.33	1.09	125	82.1

ATM

ACT BW
93
ADJ WW
738
ADJ YW
1263

44 CIRCLE ALUMNI J127 1/2 SM 1/2 AN • HOMOZYGOUS BLACK

BD: 7/25/2021 REG #: 4018719 TATTOO: J127

S D S ALUMNI 115X
CIRCLE ALUMNI F760
3478667 8106X

HOOKS SHEAR FORCE 38K
S D S QUEEN 801U

O C C GREAT PLAINS 943G
OPEN 8 8106U

D216
3274108 CIRCLE IN FOCUS X26

MYTTY IN FOCUS
CIRCLE CASINO N028

CE	BW	WW	YW	MCE	MILK	STAY	MARB.	REA	API	TI
16.3	-0.7	69	107	11.1	23.5	16.1	0.55	0.48	145	79.1

G+

ACT BW
77
ADJ WW
620
ADJ YW
1146

43 CIRCLE ALUMNI J151 1/2 SM 1/2 AN • HOMOZYGOUS BLACK

BD: 7/20/2021 REG #: 4018740 TATTOO: J151

S D S ALUMNI 115X
CIRCLE ALUMNI F760
3478667 8106X

HOOKS SHEAR FORCE 38K
S D S QUEEN 801U

O C C GREAT PLAINS 943G
OPEN 8 8106U

NLC FORTUNATE SON 100N
CIRCLE FORTUNATE W81
2535748 CIRCLE PRIME RIB P20

SRS FORTUNE 500
NLC G64 GALIX

NICHOLS PRIME RIB E160
NICHOLS QUEEN MOTHERX149

CE	BW	WW	YW	MCE	MILK	STAY	MARB.	REA	API	TI
11.6	-0.3	65	100	7.7	26.1	18.6	0.38	0.51	138	74.1

G+

ACT BW
89
ADJ WW
670
ADJ YW
1182

45 CIRCLE COWBOY J179 1/2 SM 1/2 AN • HOMOZYGOUS BLACK

BD: 7/30/2021 REG #: 4018782 TATTOO: J179

CCR COWBOY CUT 5048Z
CCR 707 COWBOY 6055B
2882869 S D S PRINCESS 707T

TRIPLE C SINGLETARY S3H
CCR MS 4045 TIME 7322T

LEMMON NEWSLINE C804
S D S PRINCESS 562R

TRIPLE C BETTIS S72J
CIRCLE BETTIS X45
2583545 CIRCLE QUEEN MOTHER N065

HOOKS SHEAR FORCE 38K
LUCAS JOSIE 19K

N BAR EMULATION EXT
CIRCLE QUEEN MOTHER J025

CE	BW	WW	YW	MCE	MILK	STAY	MARB.	REA	API	TI
14.4	-2.2	72	103	9.1	25.5	19	0.3	0.84	137	75.9

ACT BW
70
ADJ WW
632
ADJ YW
1067

AVE. SIMANGUS™ EPDS, 2021	%	CE	BW	WW	YW	MCE	MLK	STY	MRB	REA	API	TI
	Avg	12.20	0.40	76	116	6.60	22.60	15.30	0.30	0.66	130	78

CIRCLE ALUMNI *sons*

46 CIRCLE ALUMNI J212 1/2 SM 1/2 AN • HOMOZYGOUS BLACK
 BD: 7/28/2021 REG #: 4018783 TATTOO: J212

S D S ALUMNI 115X
CIRCLE ALUMNI F760
 3478667 8106X

HOOKS SHEAR FORCE 38K
 S D S QUEEN 801U

O C C GREAT PLAINS 943G
 OPEN 8 8106U

CCR SPARTAN 9124A
 CCR MS 707 COWBOY 4069B

SRS RIGHT-ON 22R
 CIRCLE QUEEN MOTHER N065

ACT BW
75
ADJ WW
611
ADJ YW
1126

CE	BW	WW	YW	MCE	MILK	STAY	MARB.	REA	API	TI
12.1	-0.5	85	130	73	25	18.1	0.22	0.6	137	82.5

CCR WICHITA 4069D
CIRCLE WICHITA G181
 3732002 CIRCLE RIGHT ON Y31

50 CIRCLE PACESETTER J202 1/2 SM 1/2 AN • HOMOZYGOUS BLACK
 BD: 7/27/2021 REG #: 4055217 TATTOO: J202

HOOKS PACESETTER 8P
CIRCLE PACESETTER D99
 3273940 S C C MS EXT 1109

HOOKS SHEAR FORCE 38K
 HOOKS MEAH 22M

N BAR EMULATION EXT
 S C C MS TRAVELER 896

ACT BW
95
ADJ WW
646
ADJ YW
1151

CE	BW	WW	YW	MCE	MILK	STAY	MARB.	REA	API	TI
9	4.9	95	159	6.5	24.4	12.8	0.39	0.47	123	83.9

F392
 -4055076

47 CIRCLE GAME PLAN J327 1/2 SM 1/2 AN • HOMOZYGOUS BLACK
 BD: 8/21/2021 REG #: 4018852 TATTOO: J327

CIRCLE GAME PLAN A189
CIRCLE GAME PLAN C81
 3123397 CIRCLE TOP GRADE Z59

HL GAME PLAN R42X
 S C C MS EXT 1109

MCM TOP GRADE 018X
 CIRCLE N241 R76

MAR INNOVATION 251
 TJ 33Y

WS BEEF KING W107
 CIRCLE QUEEN MOTHER N065

ACT BW
82
ADJ WW
705
ADJ YW
1172

CE	BW	WW	YW	MCE	MILK	STAY	MARB.	REA	API	TI
11.7	0.6	83	126	7.7	20.4	17.7	0.27	0.68	135	80.7

TJ DIPLOMAT 294D
CIRCLE DIPLOMAT F75
 -3548265 CIRCLE BEEF KING C4

51 CIRCLE PACESETTER J261 1/2 SM 1/2 AN • HETEROZYGOUS BLACK
 BD: 8/14/2021 REG #: 4018813 TATTOO: J261

HOOKS PACESETTER 8P
CIRCLE PACESETTER D99
 3273940 S C C MS EXT 1109

HOOKS SHEAR FORCE 38K
 HOOKS MEAH 22M

N BAR EMULATION EXT
 S C C MS TRAVELER 896

MAR INNOVATION 251
 TJ 33Y

CIRCLE M606 S42

ACT BW
77
ADJ WW
655
ADJ YW
1125

CE	BW	WW	YW	MCE	MILK	STAY	MARB.	REA	API	TI
11.7	0.9	88	134	7.7	21.9	17.7	0.23	0.63	135	82.1

TJ DIPLOMAT 294D
CIRCLE DIPLOMAT F82
 -3548267 B222

48 CIRCLE GAME PLAN J332 1/2 SM 1/2 AN • HOMOZYGOUS BLACK
 BD: 8/25/2021 REG #: 4018855 TATTOO: J332

CIRCLE GAME PLAN A189
CIRCLE GAME PLAN C81
 3123397 CIRCLE TOP GRADE Z59

HL GAME PLAN R42X
 S C C MS EXT 1109

MCM TOP GRADE 018X
 CIRCLE N241 R76

HOOKS TAURUS 24T
 HOOKS SHEYENNE 77S

SITZ RAINMAKER 11127
 SITZ BLACKCAP 743

ACT BW
86
ADJ WW
705
ADJ YW
1230

CE	BW	WW	YW	MCE	MILK	STAY	MARB.	REA	API	TI
12.6	1.1	85	128	7.8	18.8	17.3	0.17	0.67	130	78.7

HOOK'S YELLOWSTONE 97Y
OPEN 8 YELLOWSTONE C573
 3046394 MISS CHARLO 2070

52 CIRCLE IMPERIAL J121 3/4 SM 1/4 AN • RED
 BD: 7/23/2021 REG #: 4018714 TATTOO: J121

IR IMPERIAL B772
IR IMPERIAL D948
 3210738 IR MS DUAL FOCUS W086

WS BEEF KING W107
 IR MS LAUSANNE U022

TNT DUAL FOCUS T249
 IR MS LUCKY CHARM T976

WS BEEF MAKER R13
 WS MISS DREAMBOAT T17

N BAR EMULATION EXT
 CIRCLE QUEEN MOTHER J025

ACT BW
78
ADJ WW
645
ADJ YW
1074

CE	BW	WW	YW	MCE	MILK	STAY	MARB.	REA	API	TI
14.6	-2.5	73	106	8.4	16.9	15.3	0.53	0.85	149	84.7

WS BEEF KING W107
CIRCLE BEEF KING C4
 3548243 CIRCLE QUEEN MOTHER N065

49 CIRCLE PACESETTER J313 1/2 SM 1/2 AN • HOMOZYGOUS BLACK
 BD: 8/12/2021 REG #: 4018844 TATTOO: J313

HOOKS PACESETTER 8P
CIRCLE PACESETTER D99
 3273940 S C C MS EXT 1109

HOOKS SHEAR FORCE 38K
 HOOKS MEAH 22M

N BAR EMULATION EXT
 S C C MS TRAVELER 896

S A V PROVIDENCE 6922
 TFS MOCHA LATTE 1045L 6

SRS RIGHT-ON 22R
 CIRCLE QUEEN MOTHER N065

ACT BW
88
ADJ WW
670
ADJ YW
1200

CE	BW	WW	YW	MCE	MILK	STAY	MARB.	REA	API	TI
9.6	1.5	74	111	7.6	23.2	20.6	0.11	0.42	124	69.6

TFS BLACK ONYX 1442Y
CIRCLE OYNX B107
 3063795 CIRCLE RIGHT ON Y55



LOT 52 • CIRCLE IMPERIAL J121

Ave. Simangus™ EPDS, 2021	%	CE	BW	WW	YW	MCE	MLK	STY	MRB	REA	API	TI
Avg	12.20	0.40	76	116	6.60	22.60	15.30	0.30	0.66	130	78	

RAINFALL *sons*



LOT 53 • CIRCLE RAINFALL J906

53 CIRCLE RAINFALL J906 1/2 SM 1/2 AN • HOMOZYGOUS BLACK
 BD: 2/20/2021 REG #: 3896689 TATTOO: J906

COLEMAN CHARLO 0256
S A V RAINFALL 6846
3493406 S A V BLACKCAP MAY 4136

3C BEAU NS 4332B BZ
C/SC CROCUS F803
3424078 3C CROCUS 6447D

O C C PAXTON 730P
 BOHI ABIGALE 6014

S A V 8180 TRAVELER 004
 S A V MAY 2397

STF MR MOMENTUM H508
 3C CROCUS 2747Z B

TNT TANKER U263
 3C CROCUS Y1600 B

ACE G+

ACT BW	79
ADJ WW	769
ADJ YW	1136

CE	BW	WW	YW	MCE	MILK	STAY	MARB.	REA	API	TI
14.9	-0.5	77	121	8	21.7	16.6	0.33	0.17	135	77.4

55 CIRCLE EAGLE J920 5/8 SM 3/8 AN • HOMOZYGOUS BLACK
 BD: 3/11/2021 REG #: 3896691 TATTOO: J920

HOOK'S BLACK HAWK 50B
HOOK'S EAGLE 6E
3253742 HOOK'S CRYSTAL 1C

S A V SUPERCHARGER 6813
ASR MS SUPER BALDY F855
3485688 ASR FINE ART Y1192

HOOK'S XAVIER 14X
 HOOK'S YVETTE 100Y

GW-WBF SUBSTANCE 820Y
 HOOK'S UNDERESTIMATED 6U

S A V RECHARGE 3436
 S A V MADAME PRIDE 0075

TNT TANKER U263
 ASR FINE ART U8114

G+ ATM

ACT BW	87
ADJ WW	721
ADJ YW	1199

CE	BW	WW	YW	MCE	MILK	STAY	MARB.	REA	API	TI
12.1	-0.8	95	155	4.5	16.2	18.4	0.42	0.95	154	93.4

54 CIRCLE TEARDROP J901 5/8 SM 3/8 AN • HOMOZYGOUS BLACK
 BD: 2/2/2021 REG #: 3896712 TATTOO: J901

TJ MAIN EVENT 503B
TJ TEARDROP 783F
3459734 TJ MS 38W

CCR COWBOY CUT 5048Z
CCR MS 0056 CWBOY 6096D
3149162 CCR MS MAINLINE 0056

MR NLC UPGRADE U8676
 TJ MISS NEW DAY U14

DIKEMANS SURE BET
 TJ 12L

TRIPLE C SINGLETARY S3H
 CCR MS 4045 TIME 7322T

WOODHILL MAINLINE
 CCR MS THUNDER 8012

ACE G+

ACT BW	83
ADJ WW	776
ADJ YW	1187

CE	BW	WW	YW	MCE	MILK	STAY	MARB.	REA	API	TI
14.3	-2.8	77	117	7	31.2	19.1	0.12	0.55	137	78.6



LOT 55 • CIRCLE EAGLE J920

AVE. SIMANGUS™ EPDS, 2021	%	CE	BW	WW	YW	MCE	MLK	STY	MRB	REA	API	TI
	Avg	12.20	0.40	76	116	6.60	22.60	15.30	0.30	0.66	130	78

56

CIRCLE RESOURCE J903

PB AN • HOMOZYGOUS BLACK

BD: 2/7/2021

REG #: 4073970

TATTOO: J903

RITO 707 OF IDEAL 3407 7075
S A V RESOURCE 1441

2736444

S A V BLACKCAP MAY 4136

N BAR EMULATION EXT
COLEMAN DIXIE ERICA 8270

(3939144)

COLEMAN DIXIE ERICA 143

R R RITO 707
 IDEAL 3407 OF 1418 076

S A V 8180 TRAVELER 004
 S A V MAY 2397

EMULATION N BAR 5522
 N BAR PRIMROSE 2424

D H D TRAVELER 6807
 DIXIE ERICA OF R R 6203

ACT BW

87

ADJ WW

706

ADJ YW

1136

CE	BW	WW	YW	MCE	MILK	STAY	MARB.	REA	API	TI
10.7	0.3	74	123.3	3.9	14.3	12.7	0.32	0.39	107	65.1



LOT 56 • CIRCLE RESOURCE J903

57

CIRCLE COWBOY J912

1/2 SM 1/2 AN • HOMOZYGOUS BLACK

BD: 3/4/2021

REG #: 3896703

TATTOO: J912

CCR COWBOY CUT 5048Z
CCR 707 COWBOY 6055B

2882669

S D S PRINCESS 707T

S A V RESOURCE 1441
ASR MS SUPER BALDY E764

3303759

ASR BLACK DESI W9149

TRIPLE C SINGLETARY S3H
 CCR MS 4045 TIME 7322T

LEMMON NEWSLINE C804
 S D S PRINCESS 562R

RITO 707 OF IDEAL 3407 7075
 S A V BLACKCAP MAY 4136

KAPPES UNIQUE P27
 ASR MS BLACK DESI R567

ACT BW

92

ADJ WW

736

ADJ YW

1087

CE	BW	WW	YW	MCE	MILK	STAY	MARB.	REA	API	TI
10.1	-1.1	69	99	5	21.8	18.7	0.27	0.75	132	74.1



CIRCLE THE BASES *sons*



Circle the Bases D384 - Circle the Bases was purchased in our 2018 sale by Bell Cattle Company in Petaluma Ca. Sired by Circle Old School and out of our donor dam W11 he has risen to the top of the 45 bull calves she has produced to date. Our largest and highest selling sire group in 2020 he was well received by our commercial customers. His value continues prove out and calving his first daughters this fall gave us some of the best uddered females we have ever raised.

58 **CIRCLE THE BASES J711** 3/8 SM 5/8 AN • HOMOZYGOUS BLACK
 BD: 4/7/2021 REG #:-3979590 TATTOO: J711

CIRCLE OLD SCHOOL B62
CIRCLE THE BASES D384
 3366600
 CIRCLE OLIE W11

BASIN PAYWEIGHT 1682

4167D
 -3109454
 2528B

LEACHMAN RIGHT TIME
 HOOK_S XTRAVAGANZA 7X
 ELLINGSON LEGACY M229
 CIRCLE R242 T111

BASIN PAYWEIGHT 006S
 21AR O LASS 7017
 K C F BENNETT ABSOLUTE
 CIRCLE WALLY 6202Z

ACT BW	92
AUG. 20 WT	1405

CE	BW	WW	YW	MCE	MILK	STAY	MARB.	REA	API	TI
12.4	2.6	97	165	7.5	20.6	17.3	0.21	0.72	132	83.7

61 **CIRCLE THE BASES J704** 3/8 SM 5/8 AN • HOMOZYGOUS BLACK
 BD: 4/10/2021 REG #:-3979347 TATTOO: J704 DAM

CIRCLE OLD SCHOOL B62
CIRCLE THE BASES D384
 3366600
 CIRCLE OLIE W11

NICHOLS EXTRA H6
CIRCLE EXTRA A1821
 -2780441
 1821

LEACHMAN RIGHT TIME
 HOOK_S XTRAVAGANZA 7X
 ELLINGSON LEGACY M229
 CIRCLE R242 T111

N BAR EMULATION EXT
 NICHOLS EILEEN MAY F261

ACT BW	100
AUG. 20 WT	1485

CE	BW	WW	YW	MCE	MILK	STAY	MARB.	REA	API	TI
11	0.05	77	132	6.5	19	14.5	0.35	0.55	130	78

59 **CIRCLE THE BASES J725** 1/2 SM 1/2 AN • HOMOZYGOUS BLACK
 BD: 4/3/2021 REG #:-3979407 TATTOO: J725

CIRCLE OLD SCHOOL B62
CIRCLE THE BASES D384
 3366600
 CIRCLE OLIE W11

BASIN PAYWEIGHT 1682

4104D
 -3109392
 7318B

LEACHMAN RIGHT TIME
 HOOK_S XTRAVAGANZA 7X
 ELLINGSON LEGACY M229
 CIRCLE R242 T111

BASIN PAYWEIGHT 006S
 21AR O LASS 7017
 HOOKS SHEAR FORCE 38K
 7318

ACT BW	69
AUG. 20 WT	1375

CE	BW	WW	YW	MCE	MILK	STAY	MARB.	REA	API	TI
15.2	-2.1	80	129	8.7	21.9	17.7	0.39	0.55	145	83.1

62 **CIRCLE THE BASES J721** 1/2 SM 1/2 AN • HOMOZYGOUS BLACK
 BD: 4/16/2021 REG #:-3979559 TATTOO: J721

CIRCLE OLD SCHOOL B62
CIRCLE THE BASES D384
 3366600
 CIRCLE OLIE W11

CONNEALY LEAD ON

7130B
 -2906683
 7130 / T1168

LEACHMAN RIGHT TIME
 HOOK_S XTRAVAGANZA 7X
 ELLINGSON LEGACY M229
 CIRCLE R242 T111

CONNEALY LEADTIME
 ELIGENCE PLUS OF CONANGA
 3C WALLY C240 BLK
 1168 / 1168

ACT BW	96
AUG. 20 WT	1480

CE	BW	WW	YW	MCE	MILK	STAY	MARB.	REA	API	TI
7.9	3.7	88	142	3.8	19.7	17.7	0.23	0.82	121	76.6

60 **CIRCLE THE BASES J740** 5/8 SM 3/8 AN • HOMOZYGOUS BLACK
 BD: 4/13/2021 REG #:-3979599 TATTOO: J740 SIRE

CIRCLE OLD SCHOOL B62
CIRCLE THE BASES D384
 3366600
 CIRCLE OLIE W11

HOOKS SHEAR FORCE 38K

9269D
 -3109791
 7337W

LEACHMAN RIGHT TIME
 HOOK_S XTRAVAGANZA 7X
 ELLINGSON LEGACY M229
 CIRCLE R242 T111

NICHOLS LEGACY G151
 C&D TRACY
 NICHOLS EXTRA H6
 7337

ACT BW	72
AUG. 20 WT	1380

CE	BW	WW	YW	MCE	MILK	STAY	MARB.	REA	API	TI
17	-2.2	65	120	9	22	18	0.3	0.76	145	79

63 **CIRCLE THE BASES J715** 3/8 SM 5/8 AN • HOMOZYGOUS BLACK
 BD: 4/2/2021 REG #:-3979318 TATTOO: J715

CIRCLE OLD SCHOOL B62
CIRCLE THE BASES D384
 3366600
 CIRCLE OLIE W11

BASIN MAX 602C

C1622
 -3077288
 1622 / L1622

LEACHMAN RIGHT TIME
 HOOK_S XTRAVAGANZA 7X
 ELLINGSON LEGACY M229
 CIRCLE R242 T111

G T MAXIMUM
 BASIN ELINE ERICA 315U

ACT BW	89
AUG. 20 WT	1465

CE	BW	WW	YW	MCE	MILK	STAY	MARB.	REA	API	TI
7.6	2.6	85	148	3.8	18.7	14.6	0.25	0.69	117	75.8

AVE. SIMANGUS™ EPDS, 2021	%	CE	BW	WW	YW	MCE	MLK	STY	MRB	REA	API	TI
	Avg	12.20	0.40	76	116	6.60	22.60	15.30	0.30	0.66	130	78

CIRCLE THE BASES *sons*

64 **CIRCLE THE BASES J705** 3/8 SM 5/8 AN • HOMOZYGOUS BLACK
BD: 4/5/2021 REG #: -3979467 TATTOO: J705

CIRCLE OLD SCHOOL B62
CIRCLE THE BASES D384
3366600 CIRCLE OLIE W11

SITZ GREATPLAINS 9520

LEACHMAN RIGHT TIME
HOOK_S XTRAVAGANZA 7X
ELLINGSON LEGACY M229
CIRCLE R242 T111

O C C GREAT PLAINS 943G
SITZ PRIDE 3038

ACT BW: 82
AUG. 20 WT: 1465

9285Y
-9756936 3146W

CE	BW	WW	YW	MCE	MILK	STAY	MARB.	REA	API	TI
13	1.8	74	122	7.6	18.1	19.7	0.11	0.68	123	678

68 **CIRCLE THE BASES J749** 1/2 SM 1/2 AN • PENDING
BD: 4/5/2021 REG #: -3979790 TATTOO: J749

CIRCLE OLD SCHOOL B62
CIRCLE THE BASES D384
3366600 CIRCLE OLIE W11

NLC PAYDAY 16P

LEACHMAN RIGHT TIME
HOOK_S XTRAVAGANZA 7X
ELLINGSON LEGACY M229
CIRCLE R242 T111

NLC MALTA L132M
NLC MESMA LG140

ACT BW: 90
AUG. 20 WT: 1390

9363Y
-9757031 2428W

CE	BW	WW	YW	MCE	MILK	STAY	MARB.	REA	API	TI
12.5	1.5	83	135	5.1	19.3	16.5	0.3	0.71	130	78.3

65 **CIRCLE THE BASES J743** 1/2 SM 1/2 AN • HETEROZYGOUS BLACK
BD: 3/31/2021 REG #: -3979783 TATTOO: J743

CIRCLE OLD SCHOOL B62
CIRCLE THE BASES D384
3366600 CIRCLE OLIE W11

NLC PAYDAY 16P

LEACHMAN RIGHT TIME
HOOK_S XTRAVAGANZA 7X
ELLINGSON LEGACY M229
CIRCLE R242 T111

NLC MALTA L132M
NLC MESMA LG140
TEHAMA BANDO 155

ACT BW: 93
AUG. 20 WT: 1410

9009Y
-9756899 9009 / J9009

CE	BW	WW	YW	MCE	MILK	STAY	MARB.	REA	API	TI
11.8	2.4	87	141	5.8	20.5	15.9	0.25	0.64	125	77.9

69 **CIRCLE THE BASES J701** 1/2 SM 1/2 AN • HOMOZYGOUS BLACK
BD: 4/3/2021 REG #: -3979576 TATTOO: J701

CIRCLE OLD SCHOOL B62
CIRCLE THE BASES D384
3366600 CIRCLE OLIE W11

TFS BLACK ONYX 1442Y

LEACHMAN RIGHT TIME
HOOK_S XTRAVAGANZA 7X
ELLINGSON LEGACY M229
CIRCLE R242 T111

S A V PROVIDENCE 6922
TFS MOCHA LATTE 1045L 6

ACT BW: 90
AUG. 20 WT: 1390

C0728
-3077225 728

CE	BW	WW	YW	MCE	MILK	STAY	MARB.	REA	API	TI
11.7	1.9	84	138	7.6	22.9	19	-0.02	0.51	116	70.3

66 **CIRCLE THE BASES J733** 3/8 SM 5/8 AN • HOMOZYGOUS BLACK
BD: 4/4/2021 REG #: -3979502 TATTOO: J733

CIRCLE OLD SCHOOL B62
CIRCLE THE BASES D384
3366600 CIRCLE OLIE W11

WOODHILL FORESIGHT

LEACHMAN RIGHT TIME
HOOK_S XTRAVAGANZA 7X
ELLINGSON LEGACY M229
CIRCLE R242 T111

PAPA FORTE 1921
BON VIEW GAMMER 85
KS-HM-PG DIRECTPOWER0900
1186 / 1186

ACT BW: 69
AUG. 20 WT: 1405

C8147
-3077761 8147/1186U

CE	BW	WW	YW	MCE	MILK	STAY	MARB.	REA	API	TI
14.3	-0.6	80	133	7.9	18.2	11.7	0.15	0.77	118	75.6

70 **CIRCLE THE BASES J738** 3/8 SM 5/8 AN •
BD: 4/6/2021 REG #: -3979570 TATTOO: J738

CIRCLE OLD SCHOOL B62
CIRCLE THE BASES D384
3366600 CIRCLE OLIE W11

S A V FINAL ANSWER 0035

LEACHMAN RIGHT TIME
HOOK_S XTRAVAGANZA 7X
ELLINGSON LEGACY M229
CIRCLE R242 T111

SITZ TRAVELER 8180
S A V EMULOUS 8145

ACT BW: 93
AUG. 20 WT: 1380

C3730
-3077681 3730

CE	BW	WW	YW	MCE	MILK	STAY	MARB.	REA	API	TI
12.5	1.1	86	138	6.9	19.7	14.8	0.27	0.63	127	79.8

67 **CIRCLE THE BASES J731** 5/8 SM 3/8 AN • HOMOZYGOUS BLACK
BD: 4/21/2021 REG #: -3979548 TATTOO: J731 SIRE

CIRCLE OLD SCHOOL B62
CIRCLE THE BASES D384
3366600 CIRCLE OLIE W11

TJ HIGH BET 236X

LEACHMAN RIGHT TIME
HOOK_S XTRAVAGANZA 7X
ELLINGSON LEGACY M229
CIRCLE R242 T111

DIKEMANS SURE BET
TJ MISS BANDO S10
3C WALLY C240 BLK
812 / 812

ACT BW: 89
AUG. 20 WT: 1400

A7103
-2780792 7103 / T812

CE	BW	WW	YW	MCE	MILK	STAY	MARB.	REA	API	TI
11	0.5	75	115	5.7	21	17.4	0.3	0.7	125	75

71 **CIRCLE THE BASES J728** 1/2 SM 1/2 AN • HOMOZYGOUS BLACK
BD: 4/4/2021 REG #: -3979203 TATTOO: J728

CIRCLE OLD SCHOOL B62
CIRCLE THE BASES D384
3366600 CIRCLE OLIE W11

TNT FINALE W241

LEACHMAN RIGHT TIME
HOOK_S XTRAVAGANZA 7X
ELLINGSON LEGACY M229
CIRCLE R242 T111

S A V FINAL ANSWER 0035
TNT MISS R77
BALDRIDGE NEBRASKA 901
6316

ACT BW: 100
AUG. 20 WT: 1375

A8167
-2780792 8167/6316U


CE	BW	WW	YW	MCE	MILK	STAY	MARB.	REA	API	TI
12.9	1.7	75	131	8.1	21	18.5	0.41	0.65	139	76.5

AVE. SIMANGUS™ EPDS, 2021	%	CE	BW	WW	YW	MCE	MLK	STY	MRB	REA	API	TI
	Avg	12.20	0.40	76	116	6.60	22.60	15.30	0.30	0.66	130	78

CIRCLE THE BASES *sons*

72 CIRCLE THE BASES J747 1/2 SM 1/2 AN • HOMOZYGOUS BLACK
BD: 4/15/2021 REG #: -3979405 TATTOO: J747

CIRCLE OLD SCHOOL B62
CIRCLE THE BASES D384
3366600
CIRCLE OLIE W11

LEACHMAN RIGHT TIME
HOOK_S XTRAVAGANZA 7X 
ELLINGSON LEGACY M229
CIRCLE R242 T111

TFS BLACK ONYX 1442Y
C0712
-3077214
712

S A V PROVIDENCE 6922
TFS MOCHA LATTE 1045L 6

ACT BW	79
AUG. 20 WT	1315

CE	BW	WW	YW	MCE	MILK	STAY	MARB.	REA	API	TI
14.5	-2.3	73	113	8.7	24.1	18.9	0.3	0.69	139	77.5

76 CIRCLE THE BASES J745 1/2 SM 1/2 AN • HOMOZYGOUS BLACK
BD: 4/17/2021 REG #: -3979567 TATTOO: J745

CIRCLE OLD SCHOOL B62
CIRCLE THE BASES D384
3366600
CIRCLE OLIE W11

LEACHMAN RIGHT TIME
HOOK_S XTRAVAGANZA 7X
ELLINGSON LEGACY M229
CIRCLE R242 T111

S A V FINAL ANSWER 0035
C3619
-3077583
A6114

SITZ TRAVELER 8180
S A V EMULOUS 8145
ELLINGSON LEGACY M229
6114 / K880S

ACT BW	94
AUG. 20 WT	1370

CE	BW	WW	YW	MCE	MILK	STAY	MARB.	REA	API	TI
11.4	1.1	87	135	6	19.7	16	0.27	0.71	128	80.2

73 CIRCLE THE BASES J742 5/8 SM 3/8 AN • HETEROZYGOUS BLACK
BD: 4/5/2021 REG #: -3979550 TATTOO: J742

CIRCLE OLD SCHOOL B62
CIRCLE THE BASES D384
3366600
CIRCLE OLIE W11

LEACHMAN RIGHT TIME
HOOK_S XTRAVAGANZA 7X
ELLINGSON LEGACY M229
CIRCLE R242 T111

TJ HIGH BET 236X
A9209
-2780843
2358W


DIKEMANS SURE BET
TJ MISS BANDO S10
3C WALLY C240 BLK
2358 / M2358

ACT BW	88
AUG. 20 WT	1315

CE	BW	WW	YW	MCE	MILK	STAY	MARB.	REA	API	TI
11.3	1.1	78	124	5.8	22.5	16.5	0.26	1.05	131	78.6

77 CIRCLE THE BASES J717 1/2 SM 1/2 AN • HOMOZYGOUS BLACK
BD: 4/18/2021 REG #: -3979485 TATTOO: J717

CIRCLE OLD SCHOOL B62
CIRCLE THE BASES D384
3366600
CIRCLE OLIE W11

LEACHMAN RIGHT TIME
HOOK_S XTRAVAGANZA 7X 
ELLINGSON LEGACY M229
CIRCLE R242 T111

TFS BLACK ONYX 1442Y
C8166
-3077771
8166/6320U

S A V PROVIDENCE 6922
TFS MOCHA LATTE 1045L 6
BALDRIDGE NEBRASKA 901
6320

ACT BW	89
AUG. 20 WT	1360

CE	BW	WW	YW	MCE	MILK	STAY	MARB.	REA	API	TI
15.2	0.7	72	109	9.3	23.6	19.6	0.18	0.59	128	69.3

74 CIRCLE THE BASES J732 5/8 SM 3/8 AN • HOMOZYGOUS BLACK
BD: 4/9/2021 REG #: -3979430 TATTOO: J732

CIRCLE OLD SCHOOL B62
CIRCLE THE BASES D384
3366600
CIRCLE OLIE W11

LEACHMAN RIGHT TIME
HOOK_S XTRAVAGANZA 7X
ELLINGSON LEGACY M229
CIRCLE R242 T111

3C WALLY C240 BLK
3324Z
-2710620
3324 / N3324

EMMONS BLACK HERCULES
3C CROCUS 9278 BL
HOMESTEAD BLOCKBUSTER 409

ACT BW	96
AUG. 20 WT	1310

CE	BW	WW	YW	MCE	MILK	STAY	MARB.	REA	API	TI
12.7	1.7	71	108	7.4	19.8	16.3	0.13	0.44	119	68.3

78 CIRCLE THE BASES J714 3/8 SM 5/8 AN • HOMOZYGOUS BLACK
BD: 4/9/2021 REG #: -3979574 TATTOO: J714

CIRCLE OLD SCHOOL B62
CIRCLE THE BASES D384
3366600
CIRCLE OLIE W11

LEACHMAN RIGHT TIME
HOOK_S XTRAVAGANZA 7X
ELLINGSON LEGACY M229
CIRCLE R242 T111

WOODHILL FORESIGHT
C9363
-3077866
2428W


PAPA FORTE 1921
BON VIEW GAMMER 85
2428 / M2428

ACT BW	98
AUG. 20 WT	1330

CE	BW	WW	YW	MCE	MILK	STAY	MARB.	REA	API	TI
11	1.7	75	131	4.4	19	13	0.44	0.49	127	76.9

75 CIRCLE THE BASES J723 1/2 SM 1/2 AN • HOMOZYGOUS BLACK
BD: 4/10/2021 REG #: -3979292 TATTOO: J723

CIRCLE OLD SCHOOL B62
CIRCLE THE BASES D384
3366600
CIRCLE OLIE W11

LEACHMAN RIGHT TIME
HOOK_S XTRAVAGANZA 7X 
ELLINGSON LEGACY M229
CIRCLE R242 T111

O C C GREAT PLAINS 943G
8106X
4061231
OPEN 8 8106U


N BAR EMULATION EXT
DIXIE ERICA OF C H 1019
3C WALLY C240 BLK
1169 / 1169

ACT BW	75
AUG. 20 WT	1165

CE	BW	WW	YW	MCE	MILK	STAY	MARB.	REA	API	TI
19.6	-2.5	60	97	11.8	20.2	20.4	0.31	0.47	150	72.6

79 CIRCLE THE BASES J727 1/2 SM 1/2 AN • HOMOZYGOUS BLACK
BD: 4/7/2021 REG #: -3979304 TATTOO: J727

CIRCLE OLD SCHOOL B62
CIRCLE THE BASES D384
3366600
CIRCLE OLIE W11

LEACHMAN RIGHT TIME
HOOK_S XTRAVAGANZA 7X 
ELLINGSON LEGACY M229
CIRCLE R242 T111

WOODHILL FORESIGHT
C1699
-3077290
7161Y

PAPA FORTE 1921
BON VIEW GAMMER 85
3C WALLY C240 BLK
7161 / T1112

ACT BW	102
AUG. 20 WT	1290

CE	BW	WW	YW	MCE	MILK	STAY	MARB.	REA	API	TI
12.2	1.2	82	131	6.4	19	20.9	0.38	0.53	143	79.8

AVE. SIMANGUS™ EPDS, 2021	%	CE	BW	WW	YW	MCE	MLK	STY	MRB	REA	API	TI
Avg	12.20	0.40	76	116	6.60	22.60	15.30	0.30	0.66	130	78	



BRUIN ENVY & IRON CLAD *sons*

80 **CIRCLE ENVY J737** 1/4 SM 3/4 AN • HOMOZYGOUS BLACK
 BD: 4/6/2021 REG #: -3979308 TATTOO: J737

S A V RECHARGE 3436
BRUIN ENVY 7248
 3728783 BRUIN 943G BLACKBIRD 4264

NLC PAYDAY 16P
8201D
 3109734 8201/6362U

RITO 707 OF IDEAL 3407 7075
 S A V BLACKCAP MAY 4136

O C C GREAT PLAINS 943G
 FALCON BLACKBIRD 6071

NLC MALTA L132M
 NLC MESMA LG140
 BALDRIDGE NEBRASKA 901
 6362

ACE G+

ACT BW	82
AUG. 20 WT	1425

CE	BW	WW	YW	MCE	MILK	STAY	MARB.	REA	API	TI
14	01	86	152	7.2	14.7	18.1	0.4	0.29	146	83.7

83 **CIRCLE IRON CLAD J710** 1/2 SM 1/2 AN • HOMOZYGOUS BLACK
 BD: 4/9/2021 REG #: -3979793 TATTOO: J710

ACW IRONHIDE 395Y
WBF IRON CLAD E053
 3255518 WBF HEBE W276

ELLINGSON LEGACY M229
CIRCLE OLIE A2381
 -2780481 2381 / 2381

REMINGTON LOCK N LOAD54U
 DKF MISS NEW DEAL 205P

OCC EUROFLECK 132N
 WBF HEBE T615

NICHOLS LEGACY G151
 ELLINGSON MS PSTOCK K58
 N BAR EMULATION EXT

ATM

ACT BW	87
AUG. 20 WT	1415

CE	BW	WW	YW	MCE	MILK	STAY	MARB.	REA	API	TI
9.1	2.3	82	141	4.4	25.9	18.5	0.37	0.79	134	79.4

81 **CIRCLE ENVY J744** 1/8 SM 7/8 AN • HOMOZYGOUS BLACK
 BD: 4/5/2021 REG #: -3979344 TATTOO: J744

S A V RECHARGE 3436
BRUIN ENVY 7248
 3728783 BRUIN 943G BLACKBIRD 4264

BASIN MAX 602C
8241D
 3109747 8241/5191U

RITO 707 OF IDEAL 3407 7075
 S A V BLACKCAP MAY 4136

O C C GREAT PLAINS 943G
 FALCON BLACKBIRD 6071

G T MAXIMUM
 BASIN ELINE ERICA 315U
 ML BLK FREEDOM R636
 R5191/R3295

ACT BW	81
AUG. 20 WT	1355

CE	BW	WW	YW	MCE	MILK	STAY	MARB.	REA	API	TI
15.3	-1.8	72	119	8.4	16	13.3	0.47	0.12	137	78.2

84 **CIRCLE IRON CLAD J730** 3/8 SM 5/8 AN • HOMOZYGOUS BLACK
 BD: 4/18/2021 REG #: -3979409 TATTOO: J730

ACW IRONHIDE 395Y
WBF IRON CLAD E053
 3255518 WBF HEBE W276

GW COMFORT ZONE 651Y
1757D
 -3109129

REMINGTON LOCK N LOAD54U
 DKF MISS NEW DEAL 205P

OCC EUROFLECK 132N
 WBF HEBE T615

ELLINGSON LEGACY M229
 GW MISS PREM BEEF 984W

ACT BW	64
AUG. 20 WT	1345

CE	BW	WW	YW	MCE	MILK	STAY	MARB.	REA	API	TI
15.4	-3.6	63	108	6.6	27.6	14.6	0.2	0.6	127	71.2

82 **CIRCLE IRON CLAD J719** 1/4 SM 3/4 AN • HOMOZYGOUS BLACK
 BD: 4/16/2021 REG #: -3979544 TATTOO: J719 DAM

ACW IRONHIDE 395Y
WBF IRON CLAD E053
 3255518 WBF HEBE W276

A9214
 -2780481 6185W

REMINGTON LOCK N LOAD54U
 DKF MISS NEW DEAL 205P

OCC EUROFLECK 132N
 WBF HEBE T615

ACT BW	101
AUG. 20 WT	1430

CE	BW	WW	YW	MCE	MILK	STAY	MARB.	REA	API	TI
6.3	1.8	84	138	3	8	0.22	0.41	105	75	



AVE. SIMANGUS™ EPDS, 2021	%	CE	BW	WW	YW	MCE	MLK	STY	MRB	REA	API	TI
Avg		12.20	0.40	76	116	6.60	22.60	15.30	0.30	0.66	130	78



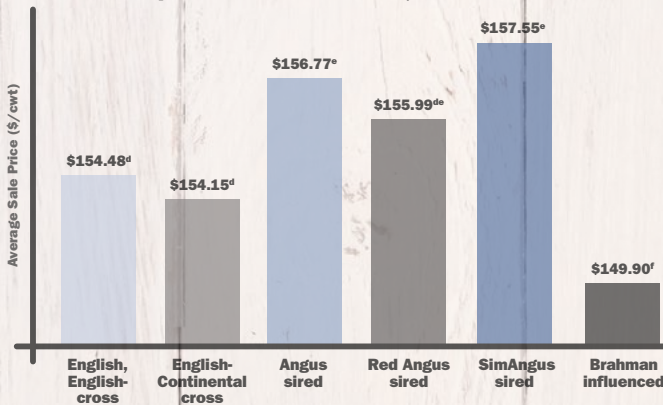
MORE PER HEAD PERIOD



SimGenetics
PROFIT THROUGH SCIENCE
American Simmental Association

EFFECT OF SIRE BREED ON SALE PRICE OF BEEF STEER CALVES

Superior Livestock Auction, Summer 2020^a



SimAngus™-sired steer calves sold through Superior Livestock Auction in summer 2020 earned **more at sale** time than all other calves.^b

It's no wonder the percentage of **SimAngus** calves marketed through the industry's largest video auction has grown **eightfold** since 2010.

Want low-risk, high-potential calves with earning potential?

STAND STRONG SIMMENTAL

406-587-4531 • simmental.org

^a For lots of 50 head or more. ^b Kansas State University, December 2020, Superior Livestock Auction data analysis of 3,280 lots, 394,900 head of beef calves marketed during summer 2020. (P<.0001)
^c Lots that qualified for breed-related programs were excluded from the model due to potential confounding effects with sire breed analysis and, for many, few lots in the data.
^{d, e, f} Means without a common superscript differ (P<0.05) Lots of calves in breed-identified groups were sired by bulls from the respective breeds and out of dams with no Brahman influence.

Beef Solutions Benefits

- First breeding season guarantee
- Large Sire Groups in Volume
- Free Delivery in California and adjoining states up to 300 miles
- Free Bull Drawing at the conclusion of the sale
- Year round customer service and marketing support
- Cowherd run like commercial cattle on range in the Foothills
- Family owned, Family managed
- Sight unseen satisfaction guaranteed
- Phone, Internet and In person purchasing options



Win a FREE BULL!



Immediately following the conclusion of the sale, there will be a drawing for a FREE BULL. After the gavel drops on the final bull, we will draw a lot number from a pot and that bull will be given a credit towards the purchase price equal to the final sale average. If the bull selected is less than the average, then the bull is FREE with no cash compensation.

- | | |
|-----------------------------------|---------------------------------------|
| 2007 Gary Silva Sr., Herald, CA | 2015 S&H Cattle, Lompoc, CA |
| 2008 Lazy JT Cattle, Shandon, CA | 2016 Matt Fischer, Valley Springs, CA |
| 2009 Andy Bonham, Paloma, CA | 2017 Bell Cattle, Petaluma, CA |
| 2010 Brennan Cattle, Oakdale, CA | 2018 Jackson Rancheria, Jackson, CA |
| 2011 Jeff Jacobson, Wilton, CA | 2019 Greg Ramelli, Portola, CA |
| 2012 Dean & Karen Wang, Baker, MT | 2020 Jim and Jennifer Perry, CA |
| 2013 Ron Gilliland, Dixon, CA | 2021 Jason Daily, Lincoln, CA |
| 2014 Jeff Gookin, Oakdale, CA | |

Congratulations to Jason Daily, Lincoln, CA, on WINNING A FREE BULL in 2021!

Thank you to these fine sponsors for this generous donation!



HOW TO PARTICIPATE AS AN ABSENTEE BUYER

Our absolute favorite part of sale day is visiting with you in person! However, we recognize that with this year's unique public health situation, some of you may feel more comfortable to purchase your next herdsire from the comforts of home. **This is why we have also made preparations for bidding by phone as well as bidding through Superior Productions' "Call or Click-To-Bid" service.** Please note that all of the lots in the sale will also be available for viewing online prior to sale day at www.superiorlivestock.com.

HERE'S HOW IT WORKS

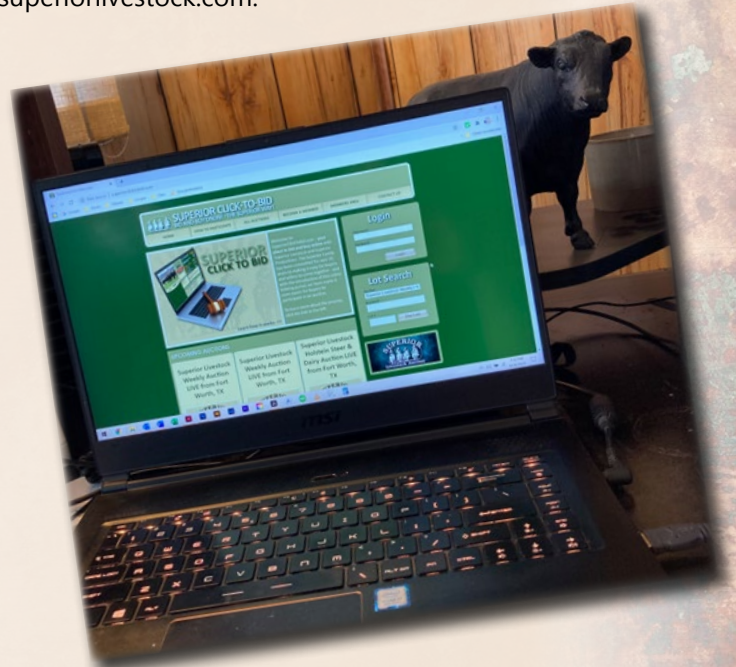
Turn in Bids Over the Phone. This is our traditional method of buying livestock. To get started simply go online to www.superiorlivestock.com and click on the tab titled "Register for a Buyer Number". Select the registration form for Superior Productions and print the registration form, fill it out and fax it in to Superior Productions at (817) 3783380 with a signature on it, or scan and email the form to info@superiorauction.com. You can also mail it in to the address provided on the form. Upon receipt of this information Superior will call you with a buyer's number and the bid line phone number that you will use on sale day to place bids over the phone.

Click-To-Bid. This is Superior's online bidding platform for cattle buying. Please note that high speed internet is required – this is not for dial-up or satellite internet. Registration is free, but you must become a member of www.superiorclicktobid.com to sign-up.

Becoming a member is easy - just go to the homepage of www.superiorclicktobid.com and follow the out-lined steps to get started. Input your information and select a username and password. You will receive an e-mail confirming you are a member. From that point forward you just have to sign in and select the sale you would like to register for and once approved you will receive an e-mail confirming which sale you are now registered for.

Viewing the Auction. There are 2 places to view the sale broadcast live on the internet:

- www.superiorlivestock.com, or
- www.superiorclicktobid.com.



Just go to the home page of either website and select the auction. If you just want to watch the auction on your computer, smartphone or tablet go to www.superiorlivestock.com, but if you want to bid over the computer you must go to www.superiorclicktobid.com. Remember you can call in to bid on the internet, but you must be a member of www.superiorclicktobid.com to "click-to-bid". Your computer must have Flash Media Player installed for this website to view the auction. If you have any questions, please call the Superior Productions office at 800-431-4452.

***If you plan to bid by phone through Superior Livestock or 'Click-to-Bid', you must register at www.superiorlivestock.com prior to bidding.**



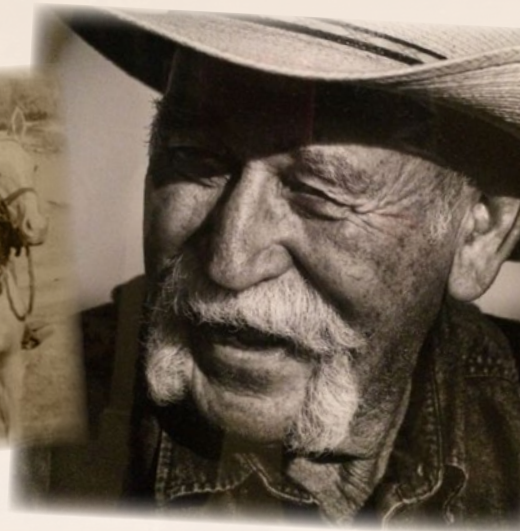
SimAngus™ Seedstock
Tim & Jill Curran
(209) 765-1815 • (209) 765-0450



**BROADCAST LIVE ON
SUPERIORCLICKTOBID.COM
SUPERIORLIVESTOCK.COM
800-422-2117**



Joe Fischer, cow herd partner
(530) 392-0154



“Our **RICH HERITAGE** of ranching in the gold country of California
produce cattle with traits *optimized to thrive* in this environment.”





Bruin Ranch

"The heart of our program lies in our generational passion for the commercial beef business. We have always bred cattle to work within our western rangeland environment. Cows that are long lived, productive and fertile continue to drive profitability. Our rich heritage of ranching in the Gold Country drives our quest to produce cattle with traits optimized to thrive in this region. **Optimizing traits doesn't happen by chance, it needs to be selected for through predictable pedigrees, actual production, maternal type and by having a strong knowledge of the environment and management scenarios the cattle are asked to perform in.** Being raised on a cow/calf operation in Calaveras County provides a strong foundation that all our genetic decisions are tested against."

*drives our quest to
s region."*





FROM OUR FAMILY
To Yours

This offering of our breeding program is a commitment from our family to yours. The breeding program is centered with our genuine passion for the improvement of traits that meet the goals of commercial cattlemen and women. We are thankful for the pride and years of loyalty of Wyatt Durham and excited for the future of our Intern Josh Whitling. Both have allowed our program to grow into the vision we have always worked toward and have helped to build an outstanding culture for raising our children in this business.

The Fischers - Joe & Abbee, Bennett, Paxton, Myles and Marydith



“Going MATERNAL doesn’t sacrifice GROWTH. Only way to get good growth is with a *strong, solid, feminine cow*. That’s your bulls. Such a solid program, my friend.” —RYAN MAHONEY: OWNER EMIGH LIVESTOCK, RIO VISTA, CA



BR Bruin Ranch

Reference Sire

Bruin Envy 7248

Bruin Ranch raised sire and owned with Open 8 Cattle and Crouthamel Cattle. Envy was the only bull we have ever pulled from a sale and elected to use natural service for our own program. Since then, we have watched hundreds of progeny, born across several states, thrive within the progressive programs that have used him. The calves are born light and quickly maintain presence, natural thickness and center body dimension. His first daughters have calved at Bruin Ranch and display outstanding fleshing ease, maternal type and tremendous udder quality. Owned with Open 8 Cattle in Montana and Crouthamel Cattle of Washington He is currently a leadoff sire in the Breeder Link semen stud.



BRUIN ENVY 7248 • SIRE OF LOTS 90-95



BRUIN 7248 ENVY 0103 • HIGH SELLING ENVY SON IN OUR 2021 SALE



BRUIN 943G BLACKBIRD 4264 • DAM OF ENVY



BRUIN EISA EVERGREEN 9217 • ENVY FIRST CALF HEIFER



BRUIN 7248 RITO 9215 • ENVY FIRST-CALF HEIFER

BRUIN ENVY *sons*



LOT 90 • BRUIN JACKPOT 1715

90 **BRUIN JACKPOT 1715** BD: 7/21/2021 REG #: 20375811 TATTOO: 1715

#S A V RECHARGE 3436
BRUIN ENVY 7248
19140354 BRUIN 943G BLACKBIRD 4264

RITO 707 OF IDEAL 3407 7075
S A V BLACKCAP MAY 4136

#O C C GREAT PLAINS 943G
FALCON BLACKBIRD 6071

BRUIN PARKER 5382
BRUIN 5382 BLACKCAP 6322
20049630 BRUIN 418 BLACKCAP 6322

LT PARKER 3096
BRUIN 46P BLACKBIRD 3345
KOUNPAL KOZI 418
BRUIN 1208 BLACKCAP 4314

ACT BW	70
ADJ WW	774

CE	BW	WW	YW	MILK	MARB	REA	SEN	SM	SW	SB
8	-0.1	68	120	14	0.49	0.7	-13	59	56	122

Calving Ease Performance SEN SWN

92 **BRUIN 7248 ENVY 1795** BD: 8/5/2021 REG #: 20375827 TATTOO: 1795

#S A V RECHARGE 3436
BRUIN ENVY 7248
19140354 BRUIN 943G BLACKBIRD 4264

RITO 707 OF IDEAL 3407 7075
S A V BLACKCAP MAY 4136

#O C C GREAT PLAINS 943G
FALCON BLACKBIRD 6071

#CONNEALY CAPITALIST 028
BRUIN 028 BLACKCAP MAY 6353
19043075 CHAMPION HILL MAY 6956

#S A V FINAL ANSWER 0035
PRIDES PITA OF CONANGA 8821
#S A V NET WORTH 4200
S A V MAY 7238

ACT BW	96
ADJ WW	868

CE	BW	WW	YW	MILK	MARB	REA	SEN	SM	SW	SB
1	3	68	111	16	-0.03	0.88	-5	72	55	95

Performance SEN

91 **BRUIN 7248 ENVY 1748** BD: 7/26/2021 REG #: 20375817 TATTOO: 1748

#S A V RECHARGE 3436
BRUIN ENVY 7248
19140354 BRUIN 943G BLACKBIRD 4264

RITO 707 OF IDEAL 3407 7075
S A V BLACKCAP MAY 4136

#O C C GREAT PLAINS 943G
FALCON BLACKBIRD 6071

#S A V INTERNATIONAL 2020
BRUIN 2020 PRINCESS 5226
18248264 BRUIN 7301 PRINCESS 9248

#S A V HARVESTOR 0338
#S A V EMBLYNETTE 5483
#S A V PIONEER 7301
BRUIN 805M PRINCESS 8403

ACT BW	89
ADJ WW	674

CE	BW	WW	YW	MILK	MARB	REA	SEN	SM	SW	SB
3	2.3	68	123	19	0.04	0.66	-19	66	55	125

Performance



LOT 91 • BRUIN 7248 ENVY 1748

BRUIN ENVY *sons*



LOT 93 • BRUIN JAEGER 1777

93 **BRUIN JAEGER 1777**
 BD: 8/3/2021 REG #: 20375823 TATTOO: 1777

#S A V RECHARGE 3436
BRUIN ENVY 7248
19140354
 BRUIN 943G BLACKBIRD 4264

#S A V INTERNATIONAL 2020
BRUIN 2020 PRINCESS 5292
18248313
 BRUIN 7022 PRINCESS 9460

RITO 707 OF IDEAL 3407 7075
 S A V BLACKCAP MAY 4136

#O C C GREAT PLAINS 943G
 FALCON BLACKBIRD 6071

#S A V HARVESTOR 0338
 #S A V EMBLYNETTE 5483

#B C MARATHON 7022
 ADVANTAGE KIND PRINCESS 2336

ACT BW	91
ADJ WW	714

CE	BW	WW	YW	MILK	MARB	REA	SEN	SM	SW	SB
2	2.9	69	109	19	0.03	0.89	-4	92	61	107

Performance SEN SWN

95 **BRUIN 7248 ENVY 1764**
 BD: 7/29/2021 REG #: 20375819 TATTOO: 1764

#S A V RECHARGE 3436
BRUIN ENVY 7248
19140354
 BRUIN 943G BLACKBIRD 4264

#CONNEALY FINAL PRODUCT
BRUIN 7212 BLACKBIRD 0248
17122819
 FALCON BLACKBIRD 6071

RITO 707 OF IDEAL 3407 7075
 S A V BLACKCAP MAY 4136

#O C C GREAT PLAINS 943G
 FALCON BLACKBIRD 6071

CONNEALY PRODUCT 568
 #EBONISTA OF CONANGA 471

#CONNEALY DATELINE
 #VERMILION BLACKBIRD 5044

ACT BW	80
ADJ WW	723

CE	BW	WW	YW	MILK	MARB	REA	SEN	SM	SW	SB
0	0.9	57	101	22	0.18	0.65	-14	69	53	100

SEN

94 **BRUIN 7248 ENVY 1776**
 BD: 8/1/2021 REG #: 20375822 TATTOO: 1776

#S A V RECHARGE 3436
BRUIN ENVY 7248
19140354
 BRUIN 943G BLACKBIRD 4264

#S A V INTERNATIONAL 2020
BRUIN 2020 PRINCESS 5292
18248313
 BRUIN 7022 PRINCESS 9460

RITO 707 OF IDEAL 3407 7075
 S A V BLACKCAP MAY 4136

#O C C GREAT PLAINS 943G
 FALCON BLACKBIRD 6071

#S A V HARVESTOR 0338
 #S A V EMBLYNETTE 5483

#B C MARATHON 7022
 ADVANTAGE KIND PRINCESS 2336

ACT BW	83
ADJ WW	700

CE	BW	WW	YW	MILK	MARB	REA	SEN	SM	SW	SB
1	0.8	62	109	17	0.11	0.62	-3	87	55	108

Performance SEN



LOT 95 • BRUIN 7248 ENVY 1764



SAV Rainfall 6846

The Rainfall progeny have proven to be some of the most consistently practical cattle we have produced. The calves come easily at birth and have plenty of vigor. Their outstanding breed character is visible from an early age and their soft, easy fleshing appearance is a time-tested indicator of range land adaptability. We have now calved our first daughters and they are outstanding! Rainfall has maintained the maternal type and fleshing ease but added milk and productivity. We think these females are bred to last and many of the great bulls of tomorrow will be out of Rainfall sired mothers. This sire line will make a sensible cross on many of the bulls we have sold in the past.

SAV RAINFALL 6846 • SIRE OF LOTS 96-111



S A V BLACKCAP MAY 4136 • DAM OF RAINFALL



96

BRUIN 6846 RAINFALL 1758
BD: 7/28/2021 REG #: 20380464 TATTOO: 1758

<p>#COLEMAN CHARLO 0256 S A V RAINFALL 6846 <small>18578963</small> S A V BLACKCAP MAY 4136</p> <p>#S A V RECHARGE 3436 BRUIN 3436 ELBA 7343 <small>19634625</small> BHR ELBA 1094 606</p>	<p>#O C C PAXTON 730P BOHI ABIGALE 6014</p> <p>#S A V 8180 TRAVELER 004 #S A V MAY 2397</p> <p>RITO 707 OF IDEAL 3407 7075 S A V BLACKCAP MAY 4136</p> <p>#S A V 8180 TRAVELER 004 S A V ELBA 1094</p>
--	--

ACT BW	92
ADJ WW	733

CE	BW	WW	YW	MILK	MARB	REA	SEN	SM	SW	SB
4	1.6	69	129	28	0.48	0.56	-36	50	63	128

↗ Performance ↗ \$WN

97

BRUIN 6846 RAINFALL 1801
BD: 8/10/2021 REG #: 20380441 TATTOO: 1801

<p>#COLEMAN CHARLO 0256 S A V RAINFALL 6846 <small>18578963</small> S A V BLACKCAP MAY 4136</p> <p>BRUIN TORQUE 5261 BRUIN 5261 LUCY 9228 <small>19772139</small> THOMAS LUCY 3799</p>	<p>#O C C PAXTON 730P BOHI ABIGALE 6014</p> <p>#S A V 8180 TRAVELER 004 #S A V MAY 2397</p> <p>#S A V 004 DENSITY 4336 FALCON BLACKBIRD 6071</p> <p>#SITZ TRAVELER 8180 THOMAS LUCY 3109</p>
--	--

ACT BW	78
ADJ WW	651

CE	BW	WW	YW	MILK	MARB	REA	SEN	SM	SW	SB
1	2.8	75	131	33	0.21	0.71	-18	84	77	123

↗ Performance ↗ \$WN

RAINFALL *sons*



LOT 98 • BRUIN JERICO 1724

98 BD: 7/23/2021 REG #: 20380452 TATTOO: 1724

#COLEMAN CHARLO 0256
S A V RAINFALL 6846
18578963 S A V BLACKCAP MAY 4136

#S A V PROSPERITY 9131
BRUIN 9131 DIANNA 9601
19728670 BRUIN 1639 DIANNA 3322

#O C C PAXTON 730P
BOHI ABIGALE 6014

#S A V 8180 TRAVELER 004
#S A V MAY 2397

#S A V PROVIDENCE 6922
#S A V EMBLYNETTE 3123

#MOHNNEN LONG DISTANCE 1639
BRUIN 307R DIANNA 9225

ACT BW
81
ADJ WW
798

CE	BW	WW	YW	MILK	MARB	REA	SEN	SM	SW	SB
3	2	68	120	28	0.93	0.52	-16	93	67	150

Performance SEN SWN

99 BD: 7/28/2021 REG #: 20380424 TATTOO: 1762

#COLEMAN CHARLO 0256
S A V RAINFALL 6846
18578963 S A V BLACKCAP MAY 4136

LD CAPITALIST 316
BRUIN 316 BLACKBIRD 9239
19774463 #BRUIN 1014 BLACKBIRD 5262

#O C C PAXTON 730P
BOHI ABIGALE 6014

#S A V 8180 TRAVELER 004
#S A V MAY 2397

#CONNEALY CAPITALIST 028
LD DIXIE ERICA 2053

BOYD SIGNATURE 1014
FALCON BLACKBIRD 6071

ACT BW
78
ADJ WW
797

CE	BW	WW	YW	MILK	MARB	REA	SEN	SM	SW	SB
5	2.2	91	157	32	0.42	1.1	-31	86	91	146

Performance SWN

If you follow along, we don't do many footnotes. In my career I've written less than a dozen, but we will do a couple in this book for the bulls that I think deserve added attention. Jericho has been a favorite of ours since a very young age. He has always displayed the look and type that we breed for. His mother is an outstanding second calver with above average milk, fleshing ease and hoof quality. She's off to a roaring start with an outcross pedigree, but with a similar twist to what we have always done. If you dig to his maternal granddam you will see Bruin Rubicon 4356's mother, Rubicon was one of the most powerful Angus bulls to ever sell in California. We plan to sample Jericho 1724 in our AI program this fall.

100 BD: 7/31/2021 REG #: 20380408 TATTOO: 1774

#COLEMAN CHARLO 0256
S A V RAINFALL 6846
18578963 S A V BLACKCAP MAY 4136

LD CAPITALIST 316
BRUIN 316 BLACKBIRD 9208
19787112 BRUIN 205 BLACKBIRD 7282

#O C C PAXTON 730P
BOHI ABIGALE 6014

#S A V 8180 TRAVELER 004
#S A V MAY 2397

#CONNEALY CAPITALIST 028
LD DIXIE ERICA 2053

#B A R EXT TRAVELER 205
BRUIN 46P BLACKBIRD 5288

ACT BW
92
ADJ WW
674

CE	BW	WW	YW	MILK	MARB	REA	SEN	SM	SW	SB
5	3.9	57	106	25	0.5	0.91	0	71	50	128

SEN



LOT 101 • BRUIN JUBILEE 1726

101

BRUIN JUBILEE 1726

BD: 7/23/2021 REG #: 20380437 TATTOO: 1726

#COLEMAN CHARLO 0256
S A V RAINFALL 6846
18578963 S A V BLACKCAP MAY 4136

#S A V 8180 TRAVELER 004
#S A V MAY 2397

#S A V PROSPERITY 9131
BRUIN 9131 BLACKBIRD 9243
19772141 BRUIN 1023 BLACKBIRD 8616

#O C C PAXTON 730P
BOHI ABIGALE 6014

#S A V PROVIDENCE 6922
#S A V EMBLYNETTE 3123

#E&B 1680 PRECISION 1023
FALCON BLACKBIRD 6071

ACT BW
87
ADJ WW
793

CE	BW	WW	YW	MILK	MARB	REA	SEN	SM	SW	SB
0	3.6	71	122	28	0.45	0.71	-18	78	65	124

↗ Performance ↗ \$WN

102

BRUIN 6846 RAINFALL 1702

BD: 7/19/2021 REG #: 20375808 TATTOO: 1702

#COLEMAN CHARLO 0256
S A V RAINFALL 6846
18578963 S A V BLACKCAP MAY 4136

#S A V 8180 TRAVELER 004
#S A V MAY 2397

#S A V PROSPERITY 9131
BRUIN 9131 BLACKBIRD 9240
19772140 BRUIN 1023 BLACKBIRD 8616

#O C C PAXTON 730P
BOHI ABIGALE 6014

#S A V PROVIDENCE 6922
#S A V EMBLYNETTE 3123

#E&B 1680 PRECISION 1023
FALCON BLACKBIRD 6071

ACT BW
64
ADJ WW
775

CE	BW	WW	YW	MILK	MARB	REA	SEN	SM	SW	SB
10	-0.8	50	84	31	0.29	0.43	7	91	64	85

↗ Calving Ease ↗ \$EN ↗ \$WN

This Rainfall x Prosperity cross really worked, we bred all the prosperity daughters this way for their first calf and both heifers and bulls clicked well. Jubilee's dam, Blackbird 9243, is a member of a tribe of ET siblings that spanned two years of bull sale highlights and absolute knock outs in the replacement heifer pen. 9243 is perfect uddered, beautiful in her maternal design and gives tremendous milk and care to her calf. Jubilee and his full brother in blood, Rainfall 1702, should be fail safe options to produce outstanding mother cows.



BRUIN GUARDIAN 9230 • FLUSH BROTHER TO DAMS OF LOTS 101-102

RAINFALL *sons*



LOT 103 • BRUIN 6846 RAINFALL 1754

103 BD: 7/29/2021 REG #: 20380476 TATTOO: 1754

#COLEMAN CHARLO 0256
S A V RAINFALL 6846
18578963 S A V BLACKCAP MAY 4136

#O C C PAXTON 730P
 BOHI ABIGALE 6014

#S A V 8180 TRAVELER 004
 #S A V MAY 2397

CONNEALY OBTAIN
BRUIN 5691 BLACKBIRD 8268
19471056 BRUIN 46P BLACKBIRD 3345

#BASIN PAYWEIGHT 107S
 QUICK FAWN OF CONANGA 680

#COLE CREEK BLACK CEDAR 46P
 BRUIN 1023 BLACKBIRD 8604

	ACT BW
	91
	ADJ WW
	769

CE	BW	WW	YW	MILK	MARB	REA	SEN	SM	SW	SB
1	2.8	61	118	38	0.56	0.48	-17	79	65	135

Performance SWN

105 BD: 7/22/2021 REG #: 20380472 TATTOO: 1722

#COLEMAN CHARLO 0256
S A V RAINFALL 6846
18578963 S A V BLACKCAP MAY 4136

#O C C PAXTON 730P
 BOHI ABIGALE 6014

#S A V 8180 TRAVELER 004
 #S A V MAY 2397

MYERS KEYSTONE M263
BRUIN M263 BLACKBIRD 8280
19471061 BRUIN 46P BLACKBIRD 3345

#CONNEALY CAPITALIST 028
 MYERS QUEEN M180

#COLE CREEK BLACK CEDAR 46P
 BRUIN 1023 BLACKBIRD 8604

	ACT BW
	81
	ADJ WW
	688

CE	BW	WW	YW	MILK	MARB	REA	SEN	SM	SW	SB
5	1.2	60	106	22	0.36	0.55	-2	81	58	109

SEN SWN

104 BD: 8/2/2021 REG #: 20380478 TATTOO: 1783

#COLEMAN CHARLO 0256
S A V RAINFALL 6846
18578963 S A V BLACKCAP MAY 4136

#O C C PAXTON 730P
 BOHI ABIGALE 6014

#S A V 8180 TRAVELER 004
 #S A V MAY 2397

CONNEALY OBTAIN
BRUIN 5691 DIANNA 8243
19471044 BRUIN 4200 DIANNA 9032

#BASIN PAYWEIGHT 107S
 QUICK FAWN OF CONANGA 680

#S A V NET WORTH 4200
 BRUIN 11 DIANNA 4104

	ACT BW
	83
	ADJ WW
	743

CE	BW	WW	YW	MILK	MARB	REA	SEN	SM	SW	SB
10	0.7	58	104	36	0.63	0.33	-3	83	70	109

Calving Ease SEN SWN



BRUIN 46P BLACKBIRD 3345 • GRANDDAM OF LOTS 103, 105.



LOT 106 • BRUIN 6846 RAINFALL 1733

106

BRUIN 6846 RAINFALL 1733

BD: 7/24/2021 REG #: 20380509 TATTOO: 1733

#COLEMAN CHARLO 0256
S A V RAINFALL 6846
18578963 S A V BLACKCAP MAY 4136

#CONNEALY CAPITALIST 028
BRUIN 028 ELBA 5287
18248308 BRUIN 7229 ELBA 3215

#O C C PAXTON 730P
BOHI ABIGALE 6014

#S A V 8180 TRAVELER 004
#S A V MAY 2397

#S A V FINAL ANSWER 0035
PRIDES PITA OF CONANGA 8821

#CONNEALY CONSENSUS 7229
BRUIN 7212 ELBA 0220

ACT BW	
75	
ADJ WW	
748	

CE	BW	WW	YW	MILK	MARB	REA	SEN	SM	SW	SB
11	-1.3	58	90	28	0.76	0.45	10	89	73	111

↔ Calving Ease ↔ SEN ↔ SWN

108

BRUIN 6846 RAINFALL 1710

BD: 7/20/2021 REG #: 20380493 TATTOO: 1710

#COLEMAN CHARLO 0256
S A V RAINFALL 6846
18578963 S A V BLACKCAP MAY 4136

#BRUIN UPPOAR 0070
BRUIN 0070 BLACKBIRD 6405
19164948 FALCON BLACKBIRD 6071

#O C C PAXTON 730P
BOHI ABIGALE 6014

#S A V 8180 TRAVELER 004
#S A V MAY 2397

#SITZ UPWARD 307R
FALCON BLACKBIRD 6071

#CONNEALY DATELINE
#VERMILION BLACKBIRD 5044

ACT BW	
80	
ADJ WW	
688	

CE	BW	WW	YW	MILK	MARB	REA	SEN	SM	SW	SB
6	01	66	119	35	0.35	0.59	-18	85	75	140

↔ Performance ↔ SWN

107

BRUIN 6846 RAINFALL 1709

BD: 7/20/2021 REG #: 20380420 TATTOO: 1709

#COLEMAN CHARLO 0256
S A V RAINFALL 6846
18578963 S A V BLACKCAP MAY 4136

O C C JULES 790J
BRUIN 790J TRENDY 9201
19776356 BRUIN 5213 TRENDY 7219

#O C C PAXTON 730P
BOHI ABIGALE 6014

#S A V 8180 TRAVELER 004
#S A V MAY 2397

#O C C EMBLAZON 854E
O C C JUANADA 709Z

LT ENTERPRISE 5213
BRUIN 0070 TRENDY 2207

ACT BW	
85	
ADJ WW	
740	

CE	BW	WW	YW	MILK	MARB	REA	SEN	SM	SW	SB
4	2.1	72	127	33	0.75	0.57	-8	88	79	125

↔ Performance ↔ SEN ↔ SWN

“Joe, I’m glad to have found a seedstock provider who shares *similar beliefs in cattle*. We weaned and sold calves yesterday and all of our steers but a couple went over 700 a few as high as 800. **Straight off the cow...heaviest set of calves we have sold in a long time.**”

- DARLING CATTLE CO, GLENNVILLE, CA

RAINFALL *sons*



LOT 109 • BRUIN 6846 RAINFALL 1763

109 BD: 7/29/2021 REG #: 20380315 TATTOO: 1763

#COLEMAN CHARLO 0256
S A V RAINFALL 6846
18578963 S A V BLACKCAP MAY 4136

KOUPALS B&B ATLAS 4061
BRUIN 4061 PRINCESS 7398
20038865 BRUIN 7404 PRINCESS 1281

#O C C PAXTON 730P
 BOHI ABIGALE 6014
 #S A V 8180 TRAVELER 004
 #S A V MAY 2397

#R B ACTIVE DUTY 010
 B&B TESS 9045
 #D R SIERRA CUT 7404
 #BRUIN 854E PRINCESS 7618

ACT BW	81
ADJ WW	736

CE	BW	WW	YW	MILK	MARB	REA	SEN	SM	SW	SB
8	0	64	102	29	0.32	0.66	8	112	77	92

Calving Ease SEN SWN

111 BD: 8/3/2021 REG #: 20380497 TATTOO: 1789

#COLEMAN CHARLO 0256
S A V RAINFALL 6846
18578963 S A V BLACKCAP MAY 4136

#S A V RESOURCE 1441
BRUIN 1441 BLACKCAP MAY 6370
18966363 CHAMPION HILL MAY 6956

#O C C PAXTON 730P
 BOHI ABIGALE 6014
 #S A V 8180 TRAVELER 004
 #S A V MAY 2397

RITO 707 OF IDEAL 3407 7075
 S A V BLACKCAP MAY 4136
 #S A V NET WORTH 4200
 S A V MAY 7238

ACT BW	99
ADJ WW	718

CE	BW	WW	YW	MILK	MARB	REA	SEN	SM	SW	SB
2	3.1	63	109	27	0.02	0.67	-11	77	59	102

Performance SEN SWN

110 BD: 8/10/2021 REG #: 20380507 TATTOO: 1805

#COLEMAN CHARLO 0256
S A V RAINFALL 6846
18578963 S A V BLACKCAP MAY 4136

#S A V RESOURCE 1441
BRUIN 1441 BLACKCAP MAY 5345
18310431 CHAMPION HILL MAY 6956

#O C C PAXTON 730P
 BOHI ABIGALE 6014
 #S A V 8180 TRAVELER 004
 #S A V MAY 2397

RITO 707 OF IDEAL 3407 7075
 S A V BLACKCAP MAY 4136
 #S A V NET WORTH 4200
 S A V MAY 7238

ACT BW	95
ADJ WW	749

CE	BW	WW	YW	MILK	MARB	REA	SEN	SM	SW	SB
0	3.4	68	126	36	0.42	0.62	-13	71	70	116

Performance SEN SWN



S A V RESOURCE 1441 • MATERNAL GRANDSIRE OF LOTS 110, 111



SITZ BARRICADE 632F • SIRE OF LOTS 112-117

Sitz Barricade 632F - I'll never forget the first time I heard of this bull. I asked a good friend about Barricade and his reply was, "he's too much for an Angus bull." Less than a week later I was driving to Montana to learn all I could and was immediately hit by the power, growth, body depth and hoof quality of the Barricade progeny and his dam. Barricade is a true breed changer and has the genomic predictions to match his appearance, early data also suggests his progeny will thrive in high altitude. This first set of bulls is a sample of more to come with a large sire group on the ground currently.

112 **BRUIN 632F BARRICADE 1792** BD: 8/3/2021 REG #: 20380353 TATTOO: 1792

SITZ STELLAR 726D
SITZ BARRICADE 632F
19078148 SITZ BARBARAMERE NELL 765D

#MOHNEN SUBSTANTIAL 272
SITZ PRIDE 200B
SITZ SUPERIOR 10971
SITZ BARBARAMERE NELL 73T

#BASIN PAYWEIGHT 1682
BRUIN 1682 BLACKBIRD 6225
18814170 BRUIN 943G BLACKBIRD 4264

#BASIN PAYWEIGHT 006S
21AR O LASS 7017
#O C C GREAT PLAINS 943G
FALCON BLACKBIRD 6071

CE	BW	WW	YW	MILK	MARB	REA	SEN	SM	SW	SB
6	1	60	114	25	0.6	0.66	-29	59	53	134

ACT BW
84
ADJ WW
634

113 **BRUIN 632F BARRICADE 1788** BD: 8/3/2021 REG #: 20380335 TATTOO: 1788

SITZ STELLAR 726D
SITZ BARRICADE 632F
19078148 SITZ BARBARAMERE NELL 765D

#MOHNEN SUBSTANTIAL 272
SITZ PRIDE 200B
SITZ SUPERIOR 10971
SITZ BARBARAMERE NELL 73T

S A V HESSTON 2217
BRUIN 2217 DIXIE ERICA 7357
19627922 ZWT DIXIE ERICA 0229

#S A V HARVESTOR 0338
S A V EMBLYNETTE 3301
DUFF STIMULUS 856
A R 346 DIXIE ERICA 857E

CE	BW	WW	YW	MILK	MARB	REA	SEN	SM	SW	SB
-3	4.4	56	93	34	0.64	0.38	6	83	60	110

ACT BW
101
ADJ WW
673

SEN SWN

114 **BRUIN 632F BARRICADE 1517** BD: 8/15/2021 REG #: 20380360 TATTOO: 1517

ACT. BW	ADJ WW	CE	BW	WW	YW	MILK	MARB	REA	SEN	SM	SW	SB	SEN	SWN
78	ET	4	0.8	54	92	23	0.24	0.45	3	72	56	94	SEN	SWN

115 **BRUIN 632F BARRICADE 1515** BD: 8/13/2021 REG #: 20380355 TATTOO: 1515

SITZ STELLAR 726D
SITZ BARRICADE 632F
19078148 SITZ BARBARAMERE NELL 765D

#MOHNEN SUBSTANTIAL 272
SITZ PRIDE 200B
SITZ SUPERIOR 10971
SITZ BARBARAMERE NELL 73T

#O C C PAXTON 730P
BRUIN 730P PRINCESS 5005
18216259 ADVANTAGE KIND PRINCESS 2336

O C C FOCUS 813F
O C C BLACKBIRD 736K
#S A F 598 BANDO 5175
TEHAMA KINDNES PRINCESS D517

CE	BW	WW	YW	MILK	MARB	REA	SEN	SM	SW	SB
7	1.3	61	105	25	0.69	0.37	-14	65	60	116

ACT BW
91
ADJ WW
ET

Performance SEN SWN

BRUIN HORSEPOWER 0120 • MATERNAL BROTHER TO LOTS 114, 115.

BARRICADE *sons*



LOT 116 • BRUIN JOURNEYMAN 1730

116 BD: 7/24/2021 REG #: 20380339 TATTOO: 1730

SITZ STELLAR 726D
SITZ BARRICADE 632F
19078148
 SITZ BARBARAMERE NELL 765D

#MOHNEN SUBSTANTIAL 272
 SITZ PRIDE 200B

SITZ SUPERIOR 10971
 SITZ BARBARAMERE NELL 73T

BRUIN TORQUE 5261
BRUIN 5261 LANA 7361
19622805
 BRUIN 307R LANA 2321

#S A V 004 DENSITY 4336
 FALCON BLACKBIRD 6071

#SITZ UPWARD 307R
 DDA LANA 585

ACT BW
77
ADJ WW
731

CE	BW	WW	YW	MILK	MARB	REA	SEN	SM	SW	SB
10	-0.3	66	131	28	0.7	0.63	-30	70	62	159

Performance SEN SWN

117 BD: 7/24/2021 REG #: 20380346 TATTOO: 1731

SITZ STELLAR 726D
SITZ BARRICADE 632F
19078148
 SITZ BARBARAMERE NELL 765D

#MOHNEN SUBSTANTIAL 272
 SITZ PRIDE 200B

SITZ SUPERIOR 10971
 SITZ BARBARAMERE NELL 73T

BRUIN TORQUE 5261
BRUIN 5261 BLACKBIRD 8249
19471046
 BRUIN 6262 BLACKBIRD 9236

#S A V 004 DENSITY 4336
 FALCON BLACKBIRD 6071

#CONNEALY IMPRESSION
 BRUIN 9794 BLACKBIRD 4183

ACT BW
70
ADJ WW
699

CE	BW	WW	YW	MILK	MARB	REA	SEN	SM	SW	SB
6	0.1	65	110	25	0.33	0.46	-10	100	67	108

Performance SEN SWN

A lot of hype surrounded Barricade 632F all through the spring of 2020. When we traveled to Montana to see his lineage and progeny it was clear we needed to use him on Torque daughters. Of the sire group, Journeyman has always been a little bit more stylish, longer fronted and still maintains the changer level of middle and mass that Barricade will put in them. Journeyman's mother, Lana 7361 is most famous for raising an outstanding son last year, Heartland 0119, purchased by John Oneto. 7361 is a very productive standout Torque daughter with a beautiful udder and outstanding disposition.



BRUIN 5261 LANA 7361 • DAM OF LOT 116



**SITZ STELLAR 726D •
SIRE OF LOTS 118-128**

Sitz Stellar 726D - There's not much more to write about this highly proven sire that hasn't been said. The calves come with modest birth, have accelerated growth and mature into nicely made females and bulls with breed leading hoof data and genomics. His pedigree allows for flexible mating options in our program as he is a cold outcross for several generations. As a bonus, the females are lovely uddered, easy fleshing and thrive at high altitude.

118 **BRUIN 726D STELLAR 1501** BD: 7/30/2021 REG #: 20380581 TATTOO: 1501

ACT. BW	ADJ. WW	CE	BW	WW	YW	MILK	MARB	REA	SEN	SM	SW	SB	Performance
77	ET	4	0.8	70	126	19	0.58	0.75	-11	88	62	130	SEN SWN

121 **BRUIN 726D STELLAR 1514** BD: 8/8/2021 REG #: 20380592 TATTOO: 1514

ACT. BW	ADJ. WW	CE	BW	WW	YW	MILK	MARB	REA	SEN	SM	SW	SB	Calving Ease
67	ET	14	-1.8	57	98	23	0.68	0.69	-6	63	59	122	SEN SWN

119 **BRUIN 726D STELLAR 1505** BD: 8/2/2021 REG #: 20380586 TATTOO: 1505

ACT. BW	ADJ. WW	CE	BW	WW	YW	MILK	MARB	REA	SEN	SM	SW	SB	Performance
70	ET	-2	2.5	78	125	24	0.7	0.9	-20	83	73	150	SWN

122 **BRUIN 726D STELLAR 1516** BD: 8/14/2021 REG #: 20380593 TATTOO: 1516

ACT. BW	ADJ. WW	CE	BW	WW	YW	MILK	MARB	REA	SEN	SM	SW	SB	Calving Ease
79	ET	10	-0.2	65	115	30	0.79	0.9	-26	70	68	143	Performance SWN

120 **BRUIN 726D STELLAR 1506** BD: 8/2/2021 REG #: 20380587 TATTOO: 1506

#MOHNEN SUBSTANTIAL 272
SITZ STELLAR 726D
168397542
SITZ PRIDE 200B

#BENFIELD SUBSTANCE 8506
MOHNEN GLYN MAWR ELBA 1758
#CONNEALY FINAL PRODUCT
#SITZ PRIDE 308Y

123 **BRUIN 726D STELLAR 1510** BD: 8/6/2021 REG #: 20380589 TATTOO: 1510

#MOHNEN SUBSTANTIAL 272
SITZ STELLAR 726D
168397542
SITZ PRIDE 200B

#BENFIELD SUBSTANCE 8506
MOHNEN GLYN MAWR ELBA 1758
#CONNEALY FINAL PRODUCT
#SITZ PRIDE 308Y

ACT. BW	ADJ. WW	ET
72		
ACT. BW	ADJ. WW	ET
72		
ET		

CE	BW	WW	YW	MILK	MARB	REA	SEN	SM	SW	SB
7	0.7	70	119	24	0.78	0.65	-20	70	67	136

Performance SWN

ACT. BW	ADJ. WW	ET
73		
ACT. BW	ADJ. WW	ET
73		
ET		

CE	BW	WW	YW	MILK	MARB	REA	SEN	SM	SW	SB
10	-0.2	64	115	26	0.85	0.8	-19	72	64	140

Calving Ease Performance SWN

STELLAR *sons*



LOT 124 • BRUIN JESTER 1713

124 **BRUIN JESTER 1713**
 BD: 7/20/2021 REG #: 20380553 TATTOO: 1713

#MOHNEN SUBSTANTIAL 272
SITZ STELLAR 726D
18397542
 SITZ PRIDE 200B

#BENFIELD SUBSTANCE 8506
 MOHNEN GLYN MAWR ELBA 1758

#CONNEALY FINAL PRODUCT
 #SITZ PRIDE 308Y

#C C A EMBLAZON 702
BRUIN EISA EVERGREEN 9272
19774417
 MISS CHARLO 2074

#O C C EMBLAZON 854E
 LIMESTONE BLACKCAP R128

SITZ RAINMAKER 713X
 SITZ RLS EISA EVERGREEN 1803

	ACT BW
	70
	ADJ WW
	693

CE	BW	WW	YW	MILK	MARB	REA	SEN	SM	\$W	\$B
3	1.2	66	111	26	0.6	0.04	-2	99	70	114

Performance SEN \$WN



MISS CHARLO 2074 • GRANDDAM OF BRUIN JESTER 1713, LOT 124

I can't draw, but if I could and was commissioned with drawing the perfect cow, it might just be the dam of Jester. His dam, 9272, is as feminine as you can make one but with a remarkable amount of center body dimension, power and muscle shape. She has what I call "those old school Angus hips," very wide and roomy, visually a true outlier in the current Angus population. Jester should sire cattle that can work in tougher range conditions, where too much milk is a concern, but also have the modern performance required to command top dollar for feeder calves.

125 **BRUIN 726D STELLAR 1728**
 BD: 7/23/2021 REG #: 20380554 TATTOO: 1728

#MOHNEN SUBSTANTIAL 272
SITZ STELLAR 726D
18397542
 SITZ PRIDE 200B

#BENFIELD SUBSTANCE 8506
 MOHNEN GLYN MAWR ELBA 1758

#CONNEALY FINAL PRODUCT
 #SITZ PRIDE 308Y

#C C A EMBLAZON 702
BRUIN 702 DIANNA 9320
19774416
 BRUIN 0070 DIANNA 4342

#O C C EMBLAZON 854E
 LIMESTONE BLACKCAP R128

#BRUIN UPROAR 0070
 BRUIN 5659 DIANA 8047

	ACT BW
	68
	ADJ WW
	726

CE	BW	WW	YW	MILK	MARB	REA	SEN	SM	\$W	\$B
4	-1	67	115	30	0.74	0.34	-18	82	73	125

Performance \$WN



LOT 126 • BRUIN 726D STELLAR 1704

126

BRUIN 726D STELLAR 1704

BD: 7/19/2021 REG #: 20380578 TATTOO: 1704

#MOHNEN SUBSTANTIAL 272
SITZ STELLAR 726D
18397542
SITZ PRIDE 200B

KOUPAL KOZI 418
BRUIN 418 BLACKCAP 6322
18943836
BRUIN 1208 BLACKCAP 4314

#BENFIELD SUBSTANCE 8506
MOHNEN GLYN MAWR ELBA 1758

#CONNEALY FINAL PRODUCT
#SITZ PRIDE 308Y

KOUPAL KOZI 22
KOUPAL EBONETTE 263

#PA FULL POWER 1208
BRUIN 746 BLACKCAP 2262

		ACT BW		ADJ WW	
		83			758

CE	BW	WW	YW	MILK	MARB	REA	SEN	SM	SW	SB
13	-2.4	70	121	23	0.82	0.62	4	92	77	133

↔ Calving Ease
↔ Performance
↔ SEN
↔ SWN

127

BRUIN 726D STELLAR 1509

BD: 8/4/2021 REG #: 20380595 TATTOO: 1509

#MOHNEN SUBSTANTIAL 272
SITZ STELLAR 726D
18397542
SITZ PRIDE 200B

#E&B 1680 PRECISION 1023
BRUIN 1023 BLACKBIRD 8616
16533520
FALCON BLACKBIRD 6071

#BENFIELD SUBSTANCE 8506
MOHNEN GLYN MAWR ELBA 1758

#CONNEALY FINAL PRODUCT
#SITZ PRIDE 308Y

#G A R PRECISION 1680
E&B 6807 LADY TRAVELER 61

#CONNEALY DATELINE
#VERMILION BLACKBIRD 5044

		ACT BW		ADJ WW	
		75			ET

CE	BW	WW	YW	MILK	MARB	REA	SEN	SM	SW	SB
4	0.8	67	118	29	0.63	0.51	-20	73	69	144

↔ Performance
↔ SWN



BRUIN 7248 ENVY 0103 • MATERNAL BROTHER TO LOT 126



BRUIN 1023 BLACKBIRD 8616 • DAM OF LOT 127

STELLAR *sons*



LOT 128 • BRUIN JACKSON 1751

BRUIN FRICTION 8231 • FLUSH BROTHER TO THE DAM OF LOT 128

128 BRUIN JACKSON 1751

BD: 7/28/2021 REG #: 20380576 TATTOO: 1751

#MOHNEN SUBSTANTIAL 272
SITZ STELLAR 726D
18397542
 SITZ PRIDE 200B

KOUPAL KOZI 418
BRUIN 418 FOREVER LADY 8214
19471038
 BRUIN 2020 FOREVER LADY 5219

#BENFIELD SUBSTANCE 8506
 MOHNEN GLYN MAWR ELBA 1758

#CONNEALY FINAL PRODUCT
 #SITZ PRIDE 308Y

KOUPAL KOZI 22
 KOUPAL EBONETTE 263
 #S A V INTERNATIONAL 2020
 BRUIN 587 FOREVER LADY 9254

ACT BW
89
ADJ WW
789

CE	BW	WW	YW	MILK	MARB	REA	SEN	SM	SW	SB
-2	2.3	80	141	12	0.31	0.83	-25	58	57	130

Performance SWN

I would almost feel bad for not commenting on this bull. We always wean for at least 45 days and put these bulls on feed at home before we ship to Nevada. I can honestly say that whenever I went by the pen, this bull always caught my eye. Complete, is how I would describe Jackson. He's a long bodied, performance bull with outstanding shape and power but what grabs you is his style and presence. His mother, 8214, has proven to be the best full sister to Bruin Friction 8231 going two for two raising good ones, with last year's son going to Duane Martin Livestock. 8214's production record is incredible ratioing 113 on her first two sons, presently she is nursing a ripper Barricade heifer calf.

129 BRUIN 5254 RESOURCE 1817

BD: 8/18/2021 REG #: 20375831 TATTOO: 1817

#S A V RESOURCE 1441
BARRETT 5254 4004 RE
18502543
 #BARRETTS MISS 4004 2526 BAR

SINCLAIR EXECUTIVE 9XV2
BRUIN 9XV2 PRINCESS 7348
19622803
 BRUIN 1441 PRINCESS 5360

RITO 707 OF IDEAL 3407 7075
 S A V BLACKCAP MAY 4136

#B A R EXT TRAVELER 205
 FINKS MISS 2526 9078 5175

N BAR EMULATION EXT V722
 #N BAR PRIMROSE Y3051

#S A V RESOURCE 1441
 BRUIN 0070 PRINCESS 2327

ACT BW
82
ADJ WW
744

CE	BW	WW	YW	MILK	MARB	REA	SEN	SM	SW	SB
13	-1.3	45	93	23	-0.01	0.45	-5	56	43	67

Calving Ease SEN

130 BRUIN 5254 RESOURCE 1830

BD: 8/24/2021 REG #: 20375834 TATTOO: 1830

#S A V RESOURCE 1441
BARRETT 5254 4004 RE
18502543
 #BARRETTS MISS 4004 2526 BAR

#S A V RECHARGE 3436
BRUIN 3436 ELBA 7359
19634628
 BHR ELBA 1094 606

RITO 707 OF IDEAL 3407 7075
 S A V BLACKCAP MAY 4136

#B A R EXT TRAVELER 205
 FINKS MISS 2526 9078 5175

RITO 707 OF IDEAL 3407 7075
 S A V BLACKCAP MAY 4136

#S A V 8180 TRAVELER 004
 S A V ELBA 1094

ACT BW
88
ADJ WW
754

CE	BW	WW	YW	MILK	MARB	REA	SEN	SM	SW	SB
9	1.3	71	122	38	0.11	0.72	-29	70	79	99

Calving Ease Performance SWN

PROFICIENT *sons*



KOUPAL JUNEAU 797 • SIRE OF KOUPAL PROFICIENT 959

131 BD: 7/28/2021 REG #: 20404178 TATTOO: 1749

#KOUPAL JUNEAU 797
KOUPAL PROFICIENT 959
19559853
#KOUPAL ZARA 45

#S A V RECHARGE 3436
BRUIN 3436 BLACKBIRD 7296
19140405
BRUIN 1023 BLACKBIRD 8616

#O C C JUNEAU 807J
KOUNALS ELBA 187
#O C C UNMISTAKABULL 896U
KOUNAL ZARA 2187
RITO 707 OF IDEAL 3407 7075
S A V BLACKCAP MAY 4136
#E&B 1680 PRECISION 1023
FALCON BLACKBIRD 6071

ACT BW	84
ADJ WW	785

CE	BW	WW	YW	MILK	MARB	REA	SEN	SM	SW	SB
7	1.2	80	134	23	0.12	0.79	-15	98	78	106

Performance SEN SWN



BRUIN ENDORSEMENT 7255 • FLUSH BROTHERS TO THE DAM OF LOTS 131, 132 AND 134

132 BD: 7/30/2021 REG #: 20404196 TATTOO: 1771

#KOUPAL JUNEAU 797
KOUPAL PROFICIENT 959
19559853
#KOUPAL ZARA 45

#S A V RECHARGE 3436
BRUIN 3436 BLACKBIRD 7235
19140390
BRUIN 1023 BLACKBIRD 8616

#O C C JUNEAU 807J
KOUNALS ELBA 187
#O C C UNMISTAKABULL 896U
KOUNAL ZARA 2187
RITO 707 OF IDEAL 3407 7075
S A V BLACKCAP MAY 4136
#E&B 1680 PRECISION 1023
FALCON BLACKBIRD 6071

ACT BW	89
ADJ WW	728

CE	BW	WW	YW	MILK	MARB	REA	SEN	SM	SW	SB
4	1.9	64	114	29	-0.1	0.57	-10	81	66	99

Performance SEN SWN

134 BD: 7/28/2021 REG #: 20404182 TATTOO: 1750

#KOUPAL JUNEAU 797
KOUPAL PROFICIENT 959
19559853
#KOUPAL ZARA 45

#S A V RECHARGE 3436
BRUIN 3436 BLACKBIRD 7271
19140399
BRUIN 1023 BLACKBIRD 8616

#O C C JUNEAU 807J
KOUNALS ELBA 187
#O C C UNMISTAKABULL 896U
KOUNAL ZARA 2187
RITO 707 OF IDEAL 3407 7075
S A V BLACKCAP MAY 4136
#E&B 1680 PRECISION 1023
FALCON BLACKBIRD 6071

ACT BW	86
ADJ WW	705

CE	BW	WW	YW	MILK	MARB	REA	SEN	SM	SW	SB
0	2.4	60	110	21	0.34	0.54	-8	82	51	129

SEN

133 BD: 7/26/2021 REG #: 20404168 TATTOO: 1744

#KOUPAL JUNEAU 797
KOUPAL PROFICIENT 959
19559853
#KOUPAL ZARA 45

SINCLAIR EXECUTIVE 9XV2
BRUIN 9XV2 KINDNESS 7349
19622804
BRUIN 1441 KINDNESS 5343

#O C C JUNEAU 807J
KOUNALS ELBA 187
#O C C UNMISTAKABULL 896U
KOUNAL ZARA 2187
N BAR EMULATION EXT V722
#N BAR PRIMROSE Y3051
#S A V RESOURCE 1441
TEHAMA KINDNESS T134

ACT BW	81
ADJ WW	741

CE	BW	WW	YW	MILK	MARB	REA	SEN	SM	SW	SB
3	2.8	65	113	29	0.49	0.54	-6	86	66	102

Performance SEN SWN



LOT 134 • BRUIN PROFICIENT 1750

BRUIN TORQUE *grandsons*

Bruin Torque 5261 - Easily the most proven sire we have ever raised is Torque. He has been used in nearly every corner of the globe with outstanding success. After using him for 5 years, he continues to please us as a problem free sire. His daughters are now hitting their stride and are incredible. Milking daughters display gorgeous udders with appropriate teat size, udder suspension and milk production. Our largest percentage of retained females this year are Torque daughters. If you need a sire to consistently add proven maternal value with added length and performance in your calf crop, Torque has done this better than any sire we have used.



BRUIN TORQUE 5261 • GRANDSIRE OF LOTS 135-137

135 BD: 8/18/2021 REG #: 20375832 TATTOO: 1820

BRUIN TORQUE 5261
BRUIN GUIDANCE 9299
19726669 THOMAS LUCY 3799

#S A V 004 DENSITY 4336
FALCON BLACKBIRD 6071

#SITZ TRAVELER 8180
THOMAS LUCY 3109

#C C A EMBLAZON 702
BRUIN 702 DIANNA 9920
19726674 BRUIN 0070 DIANNA 4342

#O C C EMBLAZON 854E
LIMESTONE BLACKCAP R128

#BRUIN UPROAR 0070
BRUIN 5659 DIANA 8047

CE	BW	WW	YW	MILK	MARB	REA	SEN	SM	SW	SB
9	0	62	104	23	0.35	0.54	-19	49	59	118

ACT BW: 61
ADJ WW: 729

Calving Ease \$WN

138 BD: 8/12/2021 REG #: 20375828 TATTOO: 1808

BRUIN ENVY 7248
BRUIN GENUINE 9223
19709447 BRUIN 028 ELBA 5287

#S A V RECHARGE 3436
BRUIN 943G BLACKBIRD 4264

#CONNEALY CAPITALIST 028
BRUIN 7229 ELBA 3215

#C C A EMBLAZON 702
BRUIN 702 BLACKBIRD 9224
19774411 BRUIN 1441 BLACKBIRD 5341

#O C C EMBLAZON 854E
LIMESTONE BLACKCAP R128

#S A V RESOURCE 1441
FALCON BLACKBIRD 6071

CE	BW	WW	YW	MILK	MARB	REA	SEN	SM	SW	SB
9	-1.6	54	83	20	0.25	0.81	12	79	60	89

ACT BW: 69
ADJ WW: 710

Calving Ease \$EN \$WN

136 BD: 8/12/2021 REG #: 20380434 TATTOO: 1810

BRUIN TORQUE 5261
BRUIN GUIDANCE 9299
19726669 THOMAS LUCY 3799

#S A V 004 DENSITY 4336
FALCON BLACKBIRD 6071

#SITZ TRAVELER 8180
THOMAS LUCY 3109

#S A V PROSPERITY 9131
BRUIN 9131 BLACKBIRD 9253
19772147 BRUIN 1023 BLACKBIRD 8616

#S A V PROVIDENCE 6922
#S A V EMBLYNETTE 3123

#E&B 1680 PRECISION 1023
FALCON BLACKBIRD 6071

CE	BW	WW	YW	MILK	MARB	REA	SEN	SM	SW	SB
12	-1.2	47	79	29	0.29	0.57	6	82	59	89

ACT BW: 69
ADJ WW: 692

Calving Ease \$EN \$WN

139 BD: 7/29/2021 REG #: 20380548 TATTOO: 1742

#MOGCK BULLSEYE
HOOVER NO DOUBT
17882682 MISS BLACKCAP ELLSTON J2

#MOGCK SURE SHOT
MOGCK MARY 1255

#SYDGEN C C & 7
#MISS BLACKCAP ELLSTON D154

G A R QUANAH 687L
BRUIN 687L BLACKBIRD 4357
18248240 BRUIN 1023 BLACKBIRD 8616

#G A R PREDESTINED
G A R OBJECTIVE 1885

#E&B 1680 PRECISION 1023
FALCON BLACKBIRD 6071

CE	BW	WW	YW	MILK	MARB	REA	SEN	SM	SW	SB
-2	4.6	61	117	22	1.1	0.67	-10	75	44	187

ACT BW: 104
ADJ WW: 755

Performance \$EN

137 BD: 8/14/2021 REG #: 20375830 TATTOO: 1812

BRUIN TORQUE 5261
BRUIN GUIDANCE 9299
19726669 THOMAS LUCY 3799

LD CAPITALIST 316
BRUIN 316 MAYFLOWER 9214
19772118 BRUIN 9449 MAYFLOWER 1225

#S A V 004 DENSITY 4336
FALCON BLACKBIRD 6071

#SITZ TRAVELER 8180
THOMAS LUCY 3109

#CONNEALY CAPITALIST 028
LD DIXIE ERICA 2053

#CONNEALY FINAL SOLUTION
BRUIN 01S3 MAYFLOWER 9468

CE	BW	WW	YW	MILK	MARB	REA	SEN	SM	SW	SB
3	2.9	74	124	24	0.67	0.56	-16	65	67	147

ACT BW: 80
ADJ WW: 793

Performance \$EN \$WN

"I LOVE THAT BRUIN BULL. My weaned calves were 100 pounds heavier than previous years at the same age. I can really see the difference in quality in my herd and my calves that I market to sell. I'm very impressed and pleased! Plus my bull is so gentle and easy going!"

- FLYING DIAMOND CATTLE, COPPEROPOLIS, CA

OCC Best Yet - Every so often we go out and sample something a little different. Both 766B and 962H were used to create outcross power bulls for people who had been using our genetics for a long time and needed a little different twist but with the same commitment to maternal type and consistency. The sister mates to these bulls will be the kind you will see in this catalog for years raising sale toppers and crowd favorites. The cows we used these bulls on were hand picked to be our best of the best, for the producers looking to build a cow herd, these two come highly recommended.



140 **BRUIN 766B BEST YET 1753**
 BD: 7/28/2021 REG #: 20394660 TATTOO: 1753

O C C WORK OF ART 766W
O C C BEST YET 766B
 18413646
 O C C DIXIE ERICA 817Y

#S A V 004 DENSITY 4336
BRUIN 4336 LUCY ROSE 6249
 18812910
 BRUIN 847P LUCY ROSE 0055

#O C C GREAT PLAINS 943G
 O C C DIXIE ERICA 662J
 #O C C EUREKA 865E
 O C C DIXIE ERICA 612H
 #S A V 8180 TRAVELER 004
 S A V MAY 7238
 O C C PROTOTYPE 847P
 THOMAS LUCY ROSE 3437

ACT BW
98
ADJ WW
727

CE	BW	WW	YW	MILK	MARB	REA	SEN	SM	SW	SB
-1	5.2	61	112	25	-0.21	0.22	-23	49	44	88

Performance

141 **BRUIN 962H HONESTY 1797**
 BD: 8/6/2021 REG #: 20394688 TATTOO: 1797

#O C C ANCHOR 771A
O C C HONESTY 962H
 13362571
 O C C DIXIE ERICA 907C

SITZ RAINMAKER 713X
MISS CHARLO 2074
 17239634
 SITZ RLS EISA EVERGREEN 1803

#D H D TRAVELER 6807
 O C C JUANADA 709V
 #N BAR EMULATION EXT
 DIXIE ERICA OF C H 1019
 #SITZ RAINMAKER 6169
 #SITZ MISS BURGESS 1591
 #O C C GREAT PLAINS 943G
 SITZ RLS EISA EVERGREEN 2740

ACT BW
91
ADJ WW
676

CE	BW	WW	YW	MILK	MARB	REA	SEN	SM	SW	SB
-1	5.1	56	91	16	0	0.07	-6	52	35	79

\$EN



BRUIN 4336 LUCY ROSE 6249 • DAM OF LOT 140



LOT 141 • BRUIN 962H HONESTY 1797



MISS CHARLO 2074 • DAM OF LOT 141

Thank
 you,
*Bruin
 Team!*



Wyatt Durham



Josh Whitting

2-YEAR-OLD *bulls*



BARRETT 5254 OF 4004 RE • SIRE OF LOTS 142-150

Barrett 5254 of 4004 RE - The major draw to purchasing 5254 was the breeder's long-standing commitment to foot quality, fertility and longevity. 5254 is a full brother to many major AI sires as he combines the power and muscle of Resource with the length, fertility and production of Barretts Miss 4004. The sons of 5254 are so consistent they are hard to tell apart. They are masculine, thick made, easy fleshing bulls while the female counterparts are elegant, long, milky and fertile. His daughters are true treasures in our herd and possess all the characteristics of females who are built for the long haul. 5254 is honestly one of the greatest bulls we have ever used.

142 **BRUIN RESOURCE 008** BD: 9/3/2020 REG #: 20064189 TATTOO: 8

#S A V RESOURCE 1441
BARRETT 5254 4004 RE
18502543 #BARRETTS MISS 4004 2526 BAR

RITO 707 OF IDEAL 3407 7075
S A V BLACKCAP MAY 4136

#B A R EXT TRAVELER 205
FINKS MISS 2526 9078 5175

#SYDGEN TRUST 6228
SR KINDNESS A348
18568854 SR 3017 KINDNESS S648

SCR PROMISE 4042
SYDGEN FOREVER LADY 4413

FIVE STAR 729 DESIGN 3017
SR KINDNESS EVIDENCE N365

CE	BW	WW	YW	MILK	MARB	REA	SEN	SM	SW	SB
7	0.9	70	115	21	0.12	0.72	-22	54	64	101

ACT BW: 80
ADJ WW: []

Performance \$WN

144 **BRUIN RESOURCE H041** BD: 10/7/2020 REG #: 20028626 TATTOO: H041

#S A V RESOURCE 1441
BARRETT 5254 4004 RE
18502543 #BARRETTS MISS 4004 2526 BAR

RITO 707 OF IDEAL 3407 7075
S A V BLACKCAP MAY 4136

#B A R EXT TRAVELER 205
FINKS MISS 2526 9078 5175

BRUIN POWER ALLIANCE 8103
SPCC HEATHER A372
18540466 SPCC HEATHER T744

#H A POWER ALLIANCE 1025
THOMAS MAYFLOWER 4389

FIVE STAR 729 DESIGN 3017
SPCC HEATHER N340

CE	BW	WW	YW	MILK	MARB	REA	SEN	SM	SW	SB
3	3.7	59	98	22	0.43	0.67	-11	54	48	111

ACT BW: 82
ADJ WW: []

\$EN

143 **BRUIN RESOURCE 046** BD: 10/28/2020 REG #: 20064190 TATTOO: 46

#S A V RESOURCE 1441
BARRETT 5254 4004 RE
18502543 #BARRETTS MISS 4004 2526 BAR

RITO 707 OF IDEAL 3407 7075
S A V BLACKCAP MAY 4136

#B A R EXT TRAVELER 205
FINKS MISS 2526 9078 5175

#S A V IRON MOUNTAIN 8066
SPCC QUEENMERE A354
18066796 SPCC QUEENMERE R545

#TC GRIDIRON 258
S A V MADAME PRIDE 3249

G A R EXPECTATION 6661
SPCC QUEENMERE M217

CE	BW	WW	YW	MILK	MARB	REA	SEN	SM	SW	SB
13	0	52	94	27	0.69	0.77	-4	57	56	124

ACT BW: 78
ADJ WW: []

Calving Ease \$EN \$WN

145 **BRUIN RESOURCE H045** BD: 10/28/2020 REG #: 20028625 TATTOO: H045

#S A V RESOURCE 1441
BARRETT 5254 4004 RE
18502543 #BARRETTS MISS 4004 2526 BAR

RITO 707 OF IDEAL 3407 7075
S A V BLACKCAP MAY 4136

#B A R EXT TRAVELER 205
FINKS MISS 2526 9078 5175

#S A V IRON MOUNTAIN 8066
SPCC HEATHER A360
18520884 SPCC HEATHER U855

#TC GRIDIRON 258
S A V MADAME PRIDE 3249

WISE ACRES VRD 217 OF C-1
#S P C C HEATHERS GEM G730

CE	BW	WW	YW	MILK	MARB	REA	SEN	SM	SW	SB
6	0.7	55	94	24	0.57	0.57	-9	51	54	115

ACT BW: 90
ADJ WW: []

\$EN

2-YEAR-OLD *bulls*

146 **BRUIN RESOURCE H033** BD: 9/29/2020 REG #: 20028624 TATTOO: H033

#S A V RESOURCE 1441
BARRETT 5254 4004 RE
18502543 #BARRETTS MISS 4004 2526 BAR

RITO 707 OF IDEAL 3407 7075
S A V BLACKCAP MAY 4136

#B A R EXT TRAVELER 205
FINKS MISS 2526 9078 5175

#S A V RESOURCE 1441
SPCC RESOURCE E734
19145990 #SPCC QUEENMERE X036

RITO 707 OF IDEAL 3407 7075
S A V BLACKCAP MAY 4136

#NICHOLS EXTRA K205
SPCC QUEENMERE T770

CE	BW	WW	YW	MILK	MARB	REA	SEN	SM	SW	SB
11	-0.1	45	86	22	0.18	0.4	-15	40	39	75

ACT BW: 74
ADJ WW: []

Calving Ease SEN

149 **BRUIN RESOURCE H038** BD: 10/3/2020 REG #: 20028627 TATTOO: H038

#S A V RESOURCE 1441
BARRETT 5254 4004 RE
18502543 #BARRETTS MISS 4004 2526 BAR

RITO 707 OF IDEAL 3407 7075
S A V BLACKCAP MAY 4136

#B A R EXT TRAVELER 205
FINKS MISS 2526 9078 5175

#EXAR UPSHOT 0562B
SPCC ERICA SCORA B441
18209264 SR ERICA SCORA U854

#SITZ UPWARD 307R
#EXAR BARBARA T020

WISE ACRES VRD 217 OF C-1
SR ERICA SCORA R546

CE	BW	WW	YW	MILK	MARB	REA	SEN	SM	SW	SB
12	-0.7	45	83	30	0.42	0.63	-2	76	53	117

ACT BW: 87
ADJ WW: []

Calving Ease SEN

147 **BRUIN RESOURCE H025** BD: 9/16/2020 REG #: 20028632 TATTOO: H025

#S A V RESOURCE 1441
BARRETT 5254 4004 RE
18502543 #BARRETTS MISS 4004 2526 BAR

RITO 707 OF IDEAL 3407 7075
S A V BLACKCAP MAY 4136

#B A R EXT TRAVELER 205
FINKS MISS 2526 9078 5175

#CONNEALY FINAL PRODUCT
SPCC FERN Z248
17586197 #SPCC FERN U856

CONNEALY PRODUCT 568
#EBONISTA OF CONANGA 471

WISE ACRES VRD 217 OF C-1
#SPENCER C322 FERN F638

CE	BW	WW	YW	MILK	MARB	REA	SEN	SM	SW	SB
6	0.5	53	91	31	0.43	0.96	-4	67	62	104

ACT BW: 80
ADJ WW: []

SEN SWN

150 **BRUIN RESOURCE H017** BD: 9/13/2020 REG #: 20028631 TATTOO: H017

#S A V RESOURCE 1441
BARRETT 5254 4004 RE
18502543 #BARRETTS MISS 4004 2526 BAR

RITO 707 OF IDEAL 3407 7075
S A V BLACKCAP MAY 4136

#B A R EXT TRAVELER 205
FINKS MISS 2526 9078 5175

SPCC TRAVELER 004 W902
SPCC HEATHER Y170
17332825 SPCC HEATHER P445

#S A V 8180 TRAVELER 004
#S P C C T ECHO K005

#B C C BUSHWACKER 41-93
S P C C HEATHER H842

CE	BW	WW	YW	MILK	MARB	REA	SEN	SM	SW	SB
3	2	48	85	24	0.26	0.37	-3	68	45	80

ACT BW: 84
ADJ WW: []

SEN

148 **BRUIN RESOURCE H031** BD: 9/26/2020 REG #: 20028630 TATTOO: H031

#S A V RESOURCE 1441
BARRETT 5254 4004 RE
18502543 #BARRETTS MISS 4004 2526 BAR

RITO 707 OF IDEAL 3407 7075
S A V BLACKCAP MAY 4136

#B A R EXT TRAVELER 205
FINKS MISS 2526 9078 5175

#KMK ALLIANCE 6595 187
#SPCC QUEENMERE X055
17036964 SPCC QUEENMERE R545

#SITZ ALLIANCE 6595
#G A R EXT 916

G A R EXPECTATION 6661
SPCC QUEENMERE M217

CE	BW	WW	YW	MILK	MARB	REA	SEN	SM	SW	SB
2	1.8	51	85	25	0.16	0.68	7	73	54	102

ACT BW: 80
ADJ WW: []

SEN

151 **BRUIN 4336 DENSITY 0774** BD: 8/22/2020 REG #: 20400094 TATTOO: 774

#S A V 8180 TRAVELER 004
#S A V 004 DENSITY 4336
14725035 S A V MAY 7238

#SITZ TRAVELER 8180
BOYD FOREVER LADY 8003

#LEACHMAN RIGHT TIME
#S A R PROSPECTOR MAY 9124

#G D A R TRAVELER 71
SITZ EVERELDA ENTENSE 1137

#R R TRAVELER 5204
#THOMAS LUCY 1041

#SITZ TRAVELER 8180
THOMAS LUCY 3799
14400168 THOMAS LUCY 3109

CE	BW	WW	YW	MILK	MARB	REA	SEN	SM	SW	SB
6	1.6	41	70	25	0.43	0.27	-2	57	40	106

ACT BW: 70
ADJ WW: 578

SEN

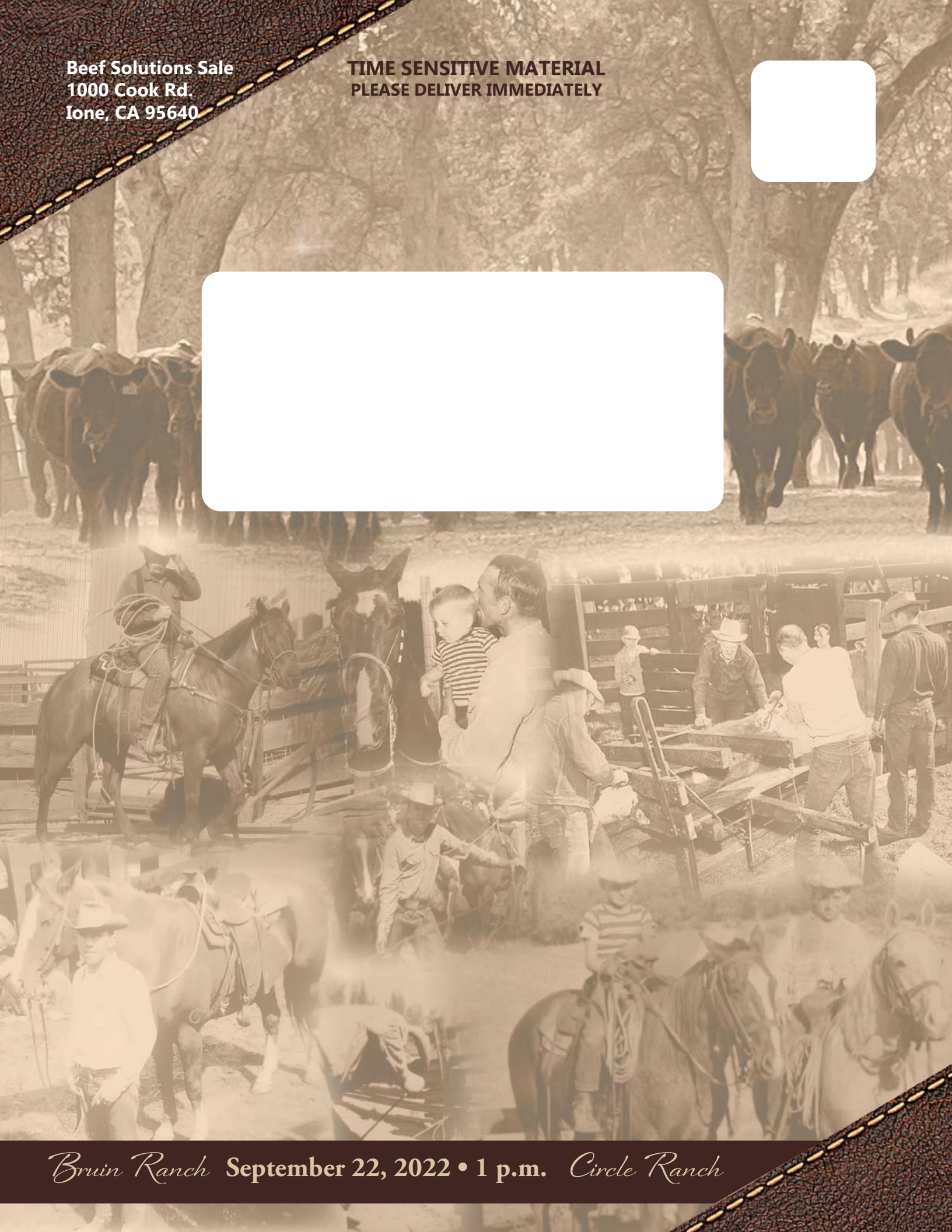
“THIS COW IS THE BEST. She stays in TOP CONDITION throughout the whole year, even on less than ideal pasture with a *ready-to-wean* calf on her side and one in her belly. *Thanks, Bruin Ranch!*”
— DONALD & LAURA WARD, CHECOTA, OKLAHOMA



SAV 004 DENSITY 4336 • SIRE OF LOT 151

Beef Solutions Sale
1000 Cook Rd.
Ione, CA 95640

TIME SENSITIVE MATERIAL
PLEASE DELIVER IMMEDIATELY



Bruin Ranch September 22, 2022 • 1 p.m. *Circle Ranch*