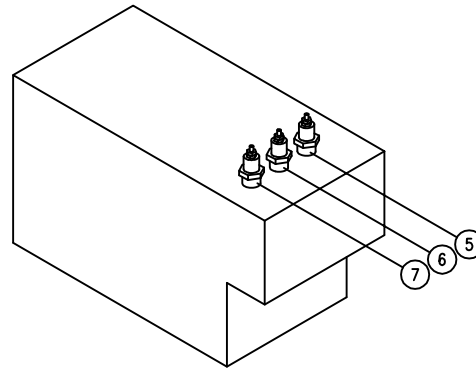


ITEM	DESCRIPTION	PART NO.	QUANTITY	
			2 COMP	1 COMP
1A	TERMINAL BLOCK	4-22TB	2	2
1B	TERMINAL BLOCK END	4-22ES	1	1
2	SWITCH, ON/DELIME	9124-1	2	1
3	THERMOSTAT, HIGH LIMIT SAFETY	4874-1	2	1
4	LEVEL CONTROL, 1M OHM	5230-1	4	2
5	PROBE, LOW LEVEL CUT-OFF	3738-9	2	1
6	PROBE, LOW LEVEL	3738-8	2	1
7	PROBE, HIGH LEVEL	3738-7	2	1
8	READY PILOT, GREEN, 125V	4-PL04	4	2
9	THERMOSTAT, OPERATING	9126-1	2	1
10	DOOR SWITCH	9-3213	2	1
11	RELAY, DPDT	9-3174-1	2	1
12	TIMER, 60MIN	4-T210	2	1
13	BUZZER	3821-1	2	1
14	COOKING PILOT, RED, 125V	4-PL07	2	1
15	COOLING SOLENOID VALVE	5162-1	2	1
16	FILL SOLENOID VALVE	5162-1	2	1
17	BLOW-DOWN SOLENOID VALVE	3-S543	2	1
18	DSI IGNITION MODULE	4851-3	2	1
*19	SPARK/SENSOR PROBE, NAT	5161-1	2	1
*19	SPARK/SENSOR PROBE, LP	5362-1	2	1
20	FUSE, 2A, 250V	9092-2	2	1
21	FUSE HOLDER	9068-1	2	1
22	RELAY, SPDT	9-3175-1	4	2
*23	GAS VALVE, NAT	5188-1	2	1
*23	GAS VALVE, LP	5188-2	2	1

* SELECT AS REQUIRED



CONTROL CIRCUIT WIRE: 16 AWG SEW 200°C