



**SAM**  
 ((RFID))  
 Systematic Asset Management



**PSS**  
 PROFESSIONAL SERVICES SOLUTIONS

**IF WE CAN TAG IT,  
 WE CAN TRACK IT**

[www.samrfid.com](http://www.samrfid.com)

# SAM

## Systematic Asset Management

SAM Systematic Asset Management utilizes either Barcode or RFID technology to tag items and track their movements. SAM allows the user to customize the software. This feature allows SAM to track anything. From file folders to boxes, backup tapes to servers, weapons to officers, SAM tracks the movements of items. SAM will even alert you when someone has an item who is not authorized, when maintenance is due or when it is time to destroy.

RFID technology allows the use of radio waves. Fixed RFID Readers and Antennas are placed around doorways though out the facility to track items entering or leaving an area. Staff can also be issued RFID name badges or existing name tags or name badge holders can be retrofitted with RFID Labels. RFID will track each person coming into or leaving the area with the items in their possession and time stamp the transaction.

### Product Features

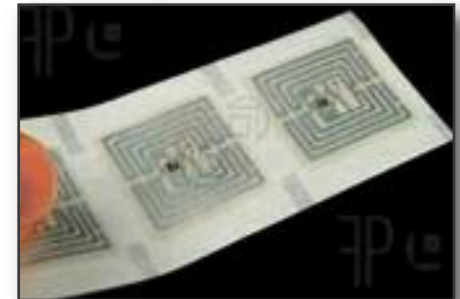
- One Server Key with Unlimited Users
- SQL Database
- Easy installation and setup (Web-based, Stand Alone or Client Server)
- Chain of Custody of who has touched or viewed assets
- Audit and Find Missing Assets using portable Barcode/RFID Reader
- Report Printing of Assets by Locations and Status
- Security Settings allow you to Control Accessibility to Assets
- Tracks Employees Certifications
- Attaches Pictures of Item to Database
- Attaches Pictures of Employees to Database
- Import/Export Feature
- Retention/Inspection Reports
- Allows Multiple Fields to be Searched Simultaneously
- Identify Assets Location and Status
- Request/Hold Item Feature



## SAM and RFID - A Winning Combination

SAM utilizes Barcode or RFID technology. This feature allows a user to begin tracking their items with Barcode technology with the final goal of using RFID. SAM was designed around RFID Technology. Benefits of using SAM with RFID:

- RFID tags can be read through cardboard, plastic, wood and glass.
- Passive RFID tags can be read at much greater distances – 10 to 20 feet
- RFID readers can read multiple tags. RFID read rates are forty or more tags per second.
- RFID tags can be imbedded within a product. Imbedded RFID tags are more durable adding a level of security for tracking objects, such as serial numbers
- If gates or portals are purchased, SAM will scan everything automatically as it passes the gate. When multiple portals are purchased, SAM will automatically update the system as it moves from one area to another.
- SAM has a certification screen. When using the portal, if an item is removed from an area by a person who is not certified to have the item, an alert will be given.
- SAM also uses a portable RFID reader making inventories much easier and faster
- Missing or misfiled items are easily found by entering in the number in the portable. The user then walks around the area and the portable will beep when the item is in range.
- SAM has the ability to write RFID tags or link an existing RFID tag to its database
- SAM allows for several types of RFID tags to be used, allowing the best tag to be chosen for the item as needed
- SAM can use RFID technology for the Employee's ID cards



# Hardware Requirements

## Large – Enterprise

### SERVER

#### Operating systems:

- Windows Server 2016 Standard 64-bit
- Windows Server 2012 R2 Standard 64-bit
- Windows Server 2012 Standard 64-bit
- Windows Server 2008 R2 SP1 Enterprise 64-bit
- Windows Server 2008 R2 SP1 Standard 64-bit

#### Back-end database:

- Microsoft SQL Server 2008 R2 Enterprise database software (64-bit edition)
- Microsoft SQL Server 2008 R2 Standard (64-bit edition)
- Microsoft SQL Server 2012 Enterprise (64-bit edition)
- Microsoft SQL Server 2012 Standard (64-bit edition)
- Microsoft SQL Server 2014 Standard (64-bit edition)
- Microsoft SQL Server 2016 Standard (64-bit edition)

#### Hardware:

- 64-bit dual processor, 2.26 gigahertz (GHz) or higher
- 32 GB of RAM
- 72 GB Free disk space
- Available USB ports

### WORKSTATION

#### Operating systems:

- Windows 10
- Windows 7 SP1 (32bit or 64bit)

#### Hardware:

- For 32-bit systems an Intel or compatible processor, 1GHz or faster (2 GHz or faster is recommended)
- For 64-bit systems a 1.4 GHz or faster processor
- 512 MB RAM (2 GB or more recommended)

